



EUROPEAN COMMISSION

Brussels, 19.12.2011
COM(2011) 650 final/2

VOL 29/33

CORRIGENDUM:

Annule et remplace le document COM(2011)650 final du 19.10.2011 (actes et annexes)
Concerne toutes les versions linguistiques

ANNEX

to the

**PROPOSAL FOR A REGULATION OF THE EUROPEAN PARLIAMENT AND OF
THE COUNCIL**

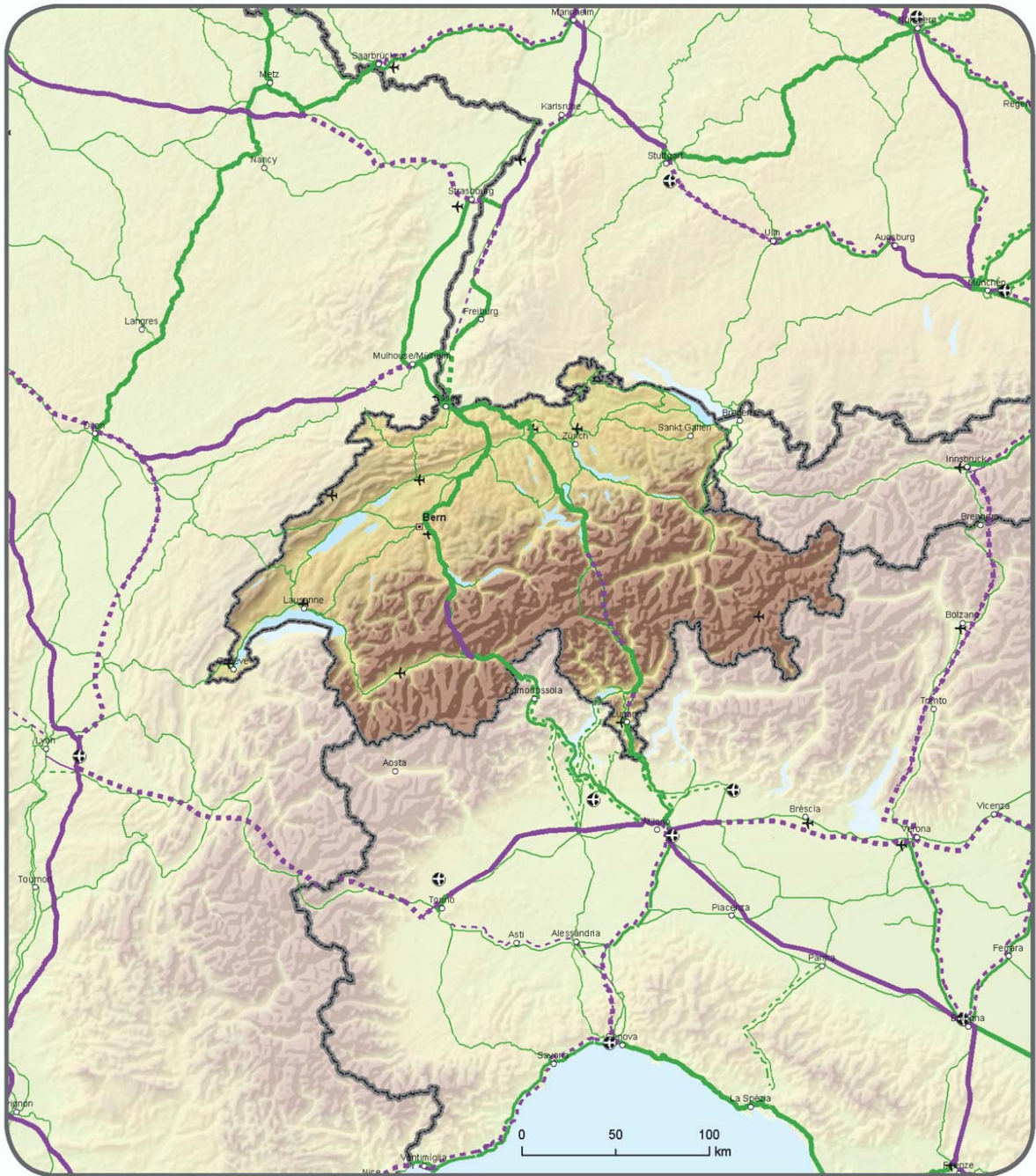
on Union guidelines for the development of the trans-European transport network

{SEC(2011) 1212}

{SEC(2011) 1213}

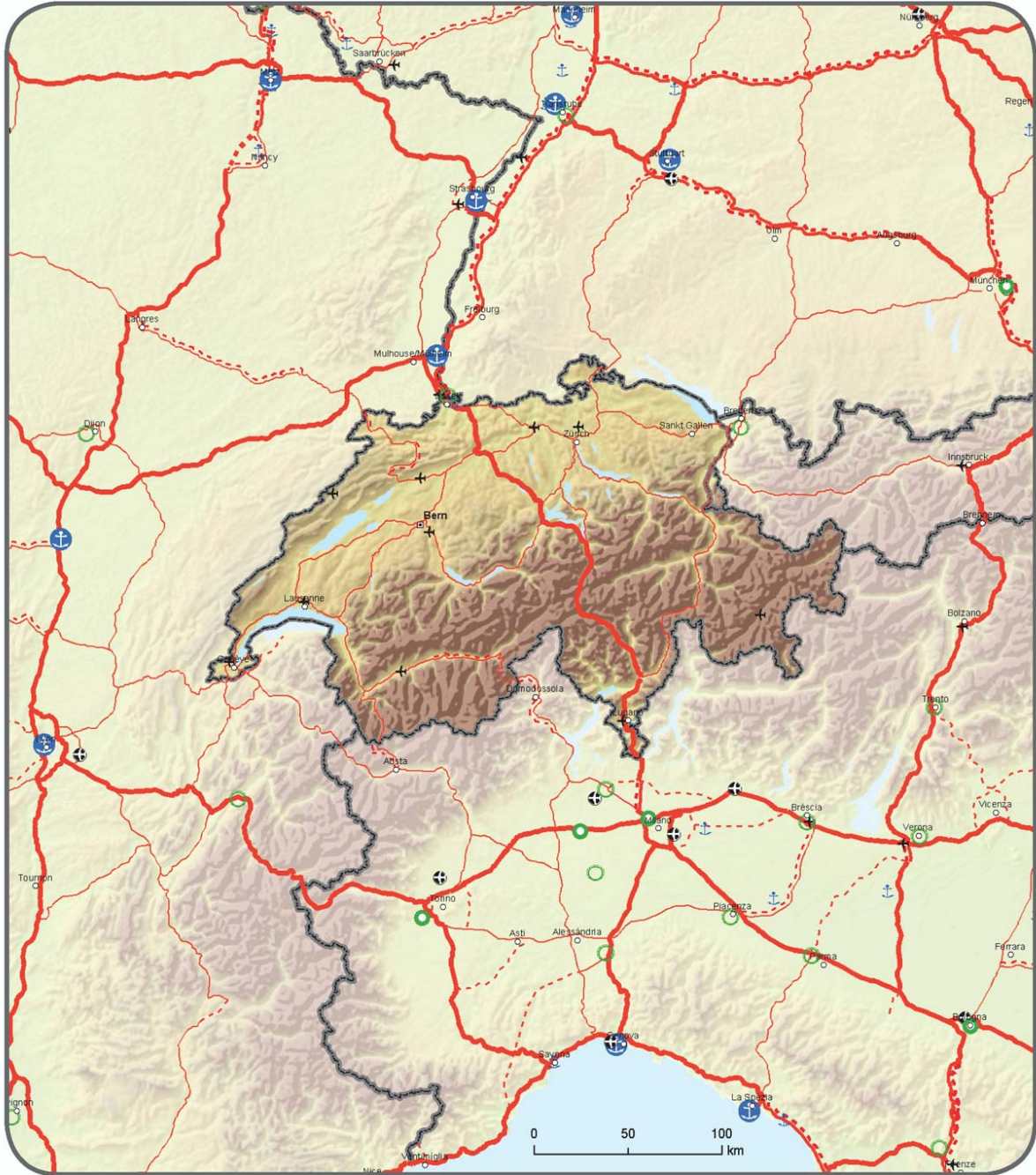


TRANS-EUROPEAN TRANSPORT NETWORK
Indicative Extension to Neighbouring Countries
Comprehensive Network: Railways and airports
Core Network: Railways (passengers) and airports
Schweiz / Suisse / Svizzera / Svizra - Liechtenstein



Compr.	Core		Compr.	Core	Compr.	Core
		Conventional rail / Completed				
		Conventional rail / To be upgraded				
		Conventional rail / Planned				
						Airports

TENtec



Road		Ports		Airports	
Compr.	Core	Compr.	Core	Compr.	Core

TENtec