



EUROPEAN COMMISSION

Brussels, 19.12.2011
COM(2011) 650 final/2

VOL 28/33

CORRIGENDUM:

Annule et remplace le document COM(2011)650 final du 19.10.2011 (actes et annexes)
Concerne toutes les versions linguistiques

ANNEX

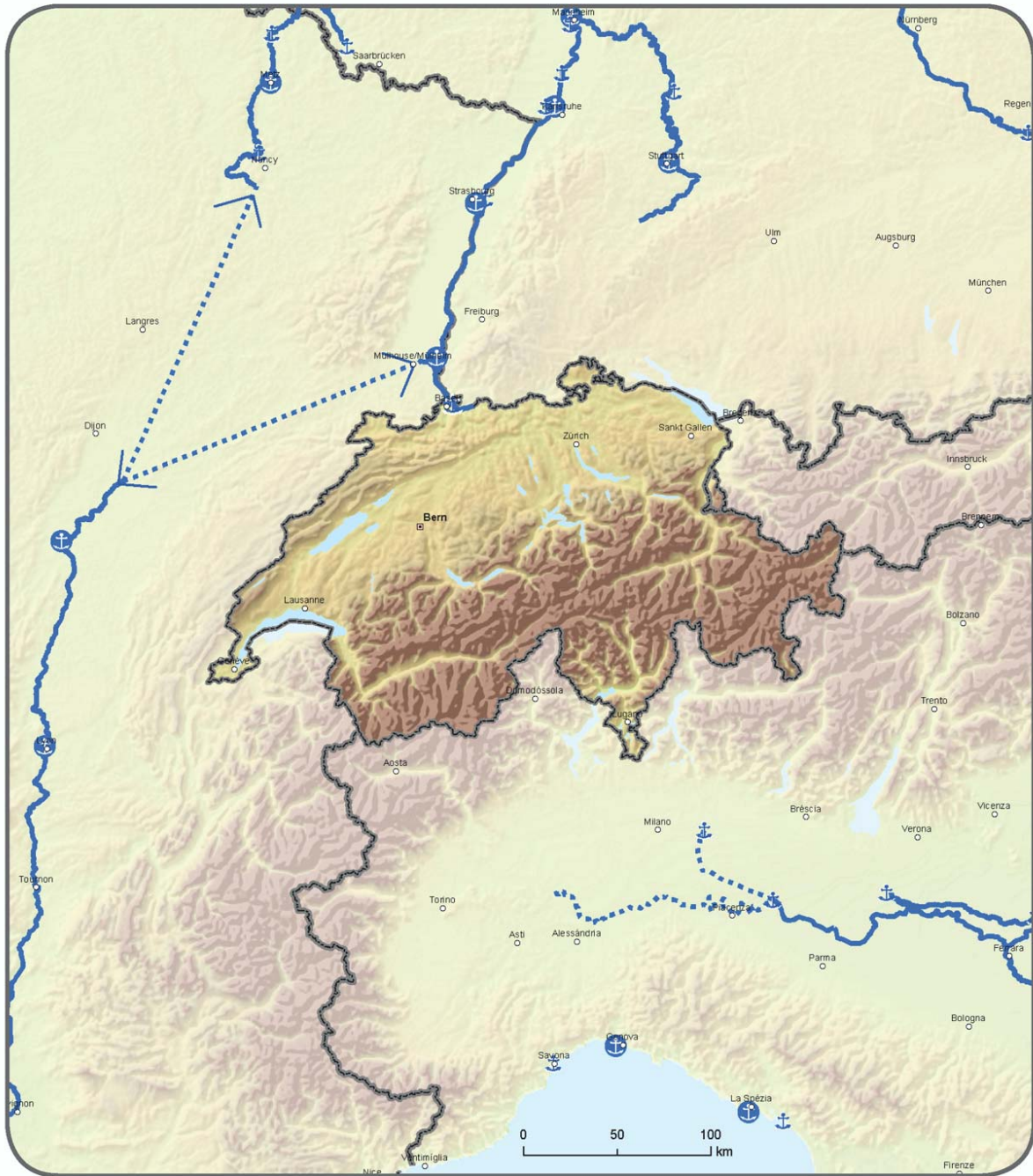
to the

**PROPOSAL FOR A REGULATION OF THE EUROPEAN PARLIAMENT AND OF
THE COUNCIL**

on Union guidelines for the development of the trans-European transport network

{SEC(2011) 1212}

{SEC(2011) 1213}



Core		Compr. Core	
	Inland Waterways / Completed		Ports
	Inland Waterways / To be upgraded		
	Inland Waterways / Planned		

TENtec



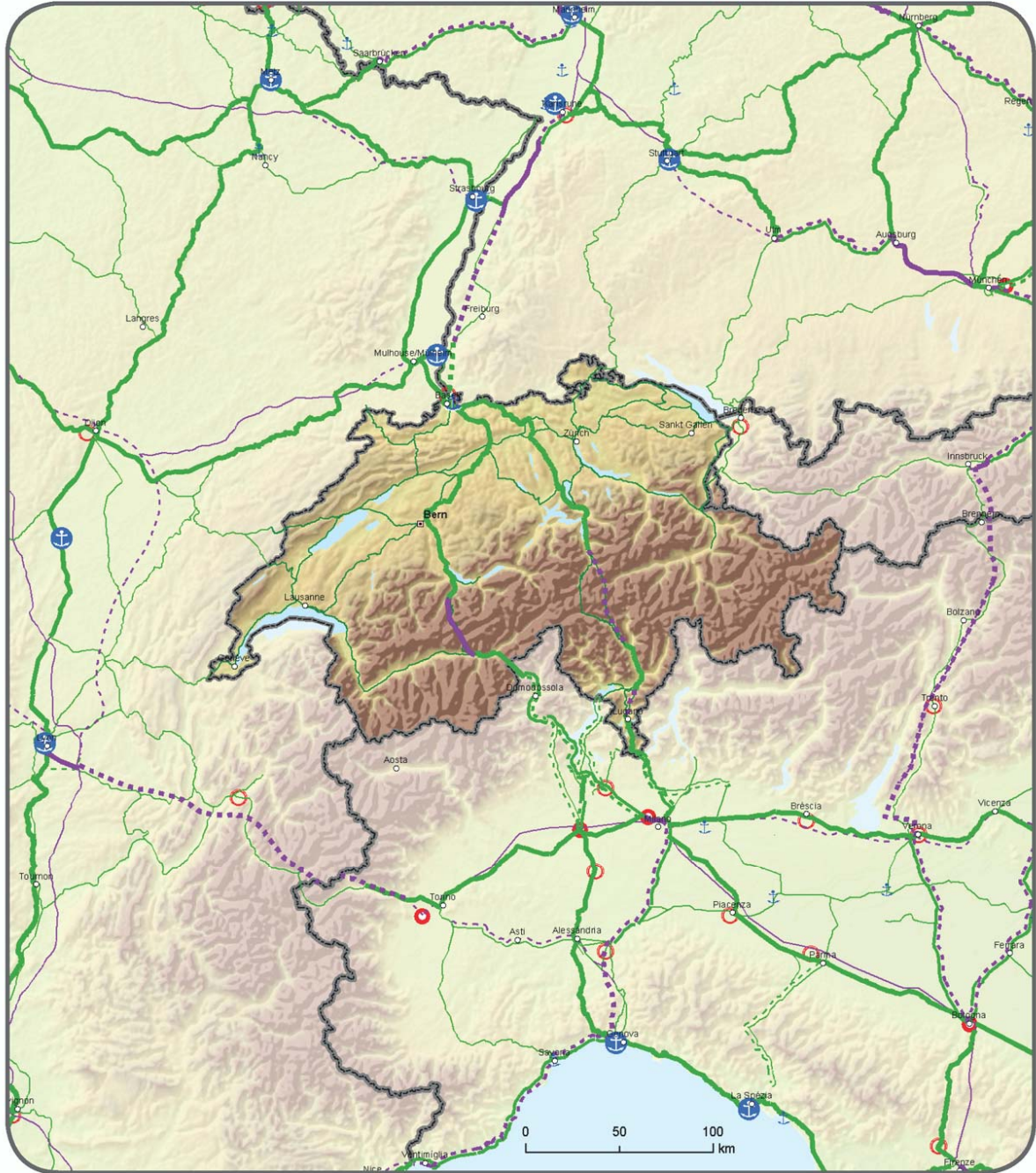
TRANS-EUROPEAN TRANSPORT NETWORK

Indicative Extension to Neighbouring Countries

Comprehensive Network: Railways, ports and rail-road terminals (RRT)

Core Network: Railways (freight), ports and rail-road terminals (RRT)

Schweiz / Suisse / Svizzera / Svizra - Liechtenstein



Compr.	Core		Compr.	Core	Compr.	Core		Compr.	Core	
		Conventional rail / Completed					Ports			RRT
		Conventional rail / To be upgraded					RRT			
		Conventional rail / Planned								

TENtec