



EUROPEAN COMMISSION

Brussels, 19.12.2011
COM(2011) 650 final/2

VOL 29/33

CORRIGENDUM:

Annule et remplace le document COM(2011)650 final du 19.10.2011 (actes et annexes)
Concerne toutes les versions linguistiques

ANNEX

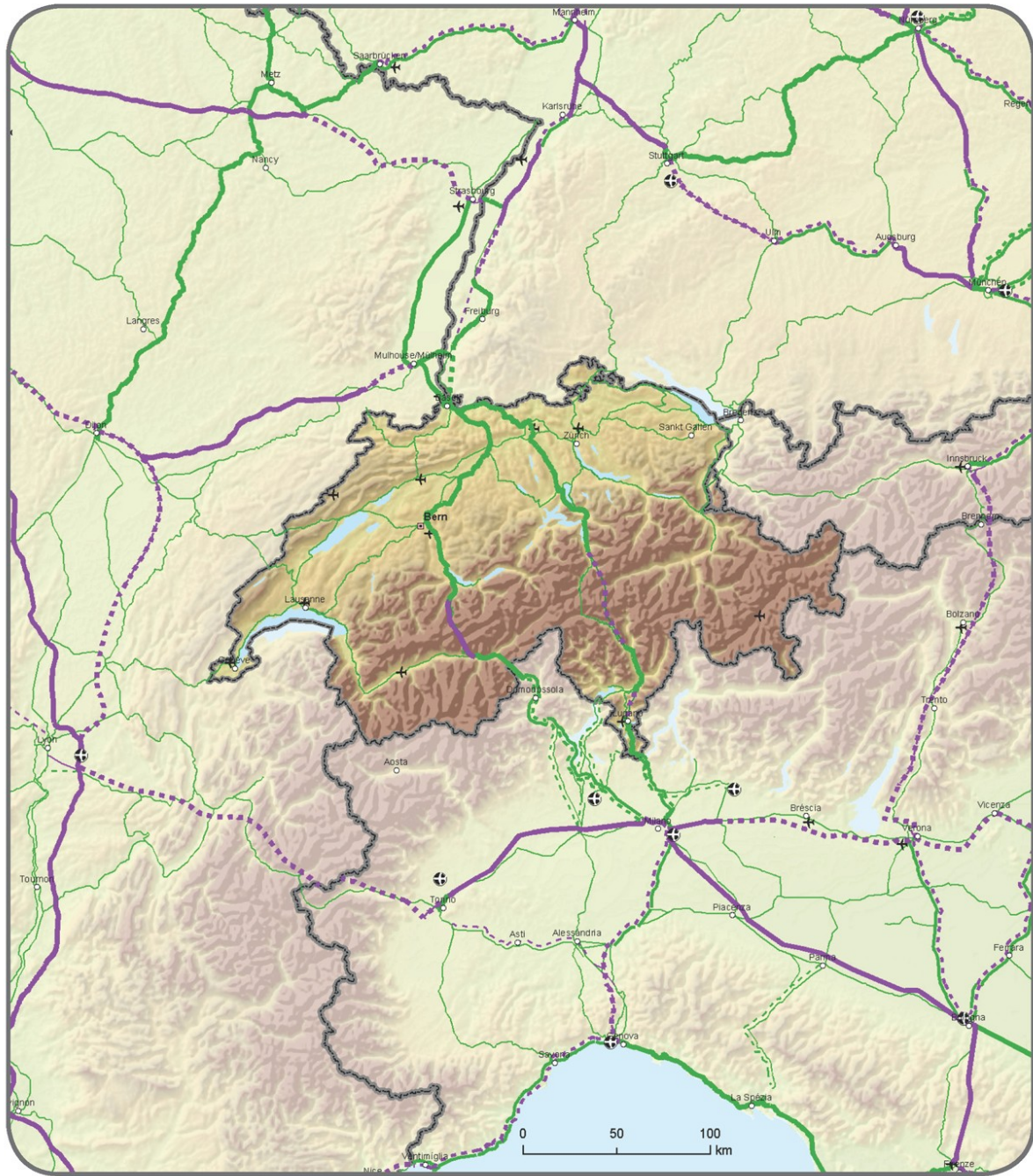
to the

**PROPOSAL FOR A REGULATION OF THE EUROPEAN PARLIAMENT AND OF
THE COUNCIL**

on Union guidelines for the development of the trans-European transport network

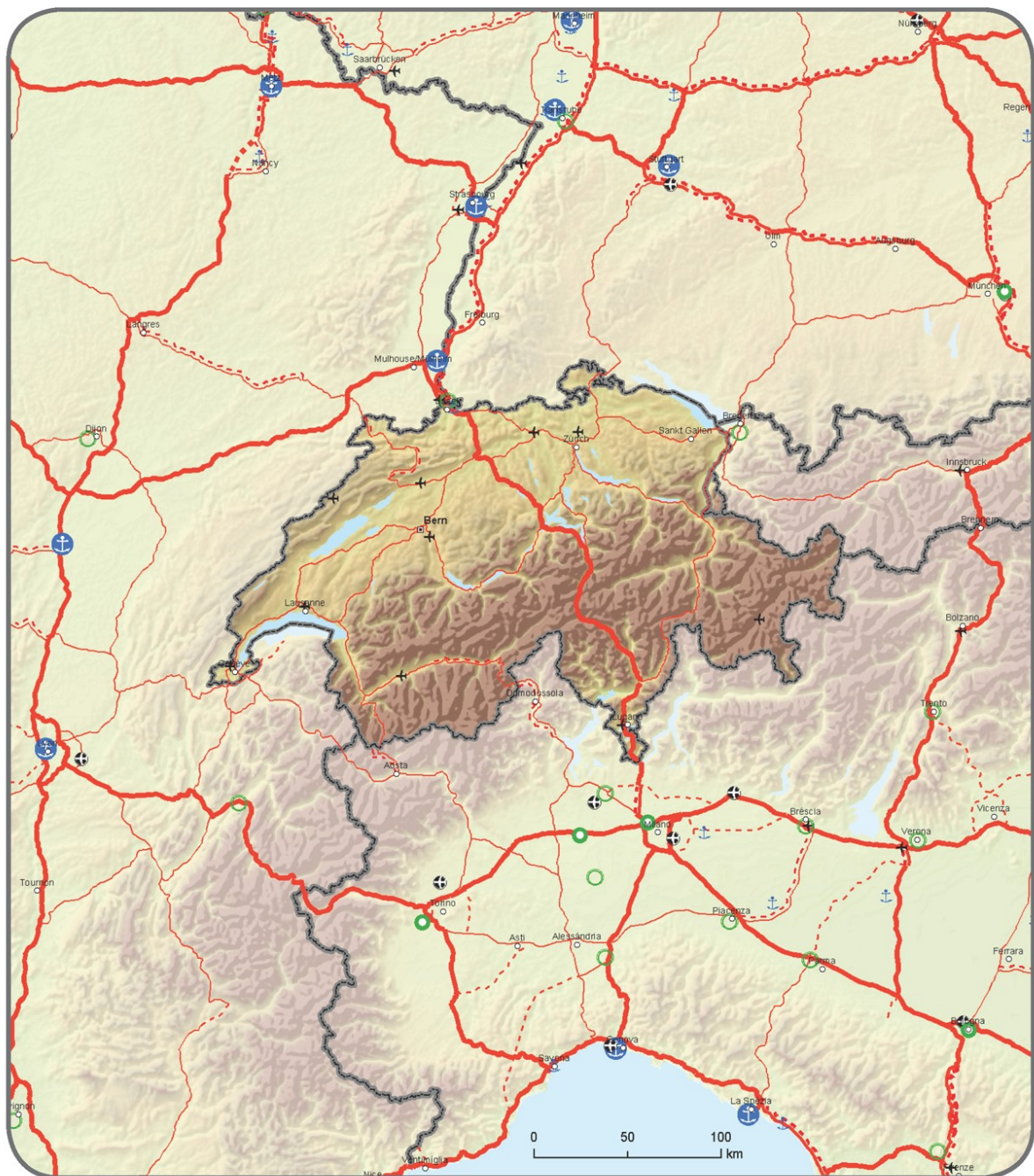
{SEC(2011) 1212}

{SEC(2011) 1213}



Compr.		Core		Compr.		Core	
						Airports	
Conventional rail / Completed	Conventional rail / To be upgraded	High speed rail / Completed	To be upgraded to high speed rail				
Conventional rail / Planned	High speed rail / Planned						

TENtec



Road		Ports		Airports	
Compr.	Core	Compr.	Core	Compr.	Core

Legend for Road:
 Solid red line: Road / Completed
 Dashed red line: Road / To be upgraded
 Dotted red line: Road / Planned
 Legend for Ports:
 Blue anchor icon: Ports
 Legend for RRT:
 Green circle icon: RRT
 Legend for Airports:
 Black airplane icon: Airports

TENtec