



Brussels, 26.6.2013  
SWD(2013) 232 final

PART I/III

**COMMISSION STAFF WORKING DOCUMENT**  
*Accompanying the document*

**REPORT FROM THE COMMISSION TO THE EUROPEAN PARLIAMENT AND  
THE COUNCIL**

**Eighth progress report on economic, social and territorial cohesion  
The regional and urban dimension of the crisis**

{COM(2013) 471 final}

**Figure 1: Member States grouped by impact of recession, 2007-2011**

	Annual average change in %, 2007-2011			Impact of the recession
	GDP	Employment	Combined*	
EU-27	-0.1	-0.2	-0.2	Moderate
EU-15	-0.2	-0.3	-0.3	Moderate
EU-12**	1.6	-0.1	0.7	Low
Latvia	-4.5	-6.4	-5.5	Very high
Greece	-3.9	-1.9	-2.9	Very high
Ireland	-1.8	-3.9	-2.8	Very high
Lithuania	-1.5	-2.7	-2.1	Very high
Estonia	-2.0	-2.1	-2.1	Very high
Spain	-0.7	-2.7	-1.7	Very high
Portugal	-0.6	-1.3	-1.0	High
Denmark	-1.0	-0.8	-0.9	High
Bulgaria	0.6	-2.3	-0.8	High
Hungary	-0.8	-0.8	-0.8	High
Italy	-1.1	-0.4	-0.8	High
Slovenia	-0.7	-0.8	-0.8	High
Romania	0.3	-1.0	-0.3	Moderate
UK	-0.6	-0.1	-0.3	Moderate
Finland	-0.7	0.2	-0.2	Moderate
France	0.0	-0.1	0.0	Moderate
Netherlands	0.2	0.3	0.2	Moderate
Czech Rep.	0.7	-0.1	0.3	Moderate
Cyprus	0.9	0.5	0.7	Low
Belgium	0.6	0.9	0.7	Low
Austria	0.6	0.9	0.8	Low
Sweden	1.1	0.5	0.8	Low
Germany	0.7	0.8	0.8	Low
Slovakia	2.0	0.4	1.2	Low
Luxembourg	-0.1	2.7	1.3	Low
Malta	1.4	1.6	1.5	Low
Poland	3.7	1.4	2.6	Low

\* Average of change in GDP and change in employment

\*\* EU-12 are the Member States that joined in 2004 and 2007

Source: Eurostat

**Figure 2: Changes in GVA and employment by sector by group of MS, 2007-2011**

Annual average % change 2007-2011	Employment					Gross Value Added				
	<i>Very high impact</i>	<i>High impact</i>	<i>Moderate impact</i>	<i>Low impact</i>	<i>EU-27</i>	<i>Very high impact</i>	<i>High impact</i>	<i>Moderate impact</i>	<i>Low impact</i>	<i>EU-27</i>
Agriculture, forestry and fishing	-3.1	-1.7	0.8	-1.6	-1.1	0.7	0.4	1.3	-1.6	0.8
Industry (except construction)	-4.8	-2.5	-2.9	-0.5	-2.2	-1.1	-2.6	-1.9	0.4	-0.9
Construction	-15.2	-2.8	-1.3	2.1	-3.0	-8.6	-4.8	-2.1	1.7	-2.9
Wholesale and retail trade, transport, accomodation and food services	-1.8	-0.4	-0.2	0.9	-0.1	-1.0	-1.5	-0.7	1.5	-0.2
Information and communication	0.2	1.0	0.5	0.1	0.4	2.5	1.8	1.1	3.6	1.9
Financial and insurance activities	-1.1	0.1	-0.3	0.1	-0.1	-1.8	1.3	-0.7	0.8	-0.2
Real estate activities	0.2	0.9	-0.8	1.8	0.3	0.2	0.2	1.2	0.9	0.8
Professional, scientific, technical, administrative and support services	-0.1	0.8	0.6	3.4	1.5	-0.5	-1.0	0.1	-0.2	-0.2
Public administration, defence, education, health and social work	0.7	-0.4	0.9	1.4	0.8	1.2	0.2	1.3	1.6	1.2
Arts, entertainment, recreation, other services, services employed by households & extra-territorial bodies	-0.5	1.4	1.0	0.7	0.7	0.5	0.9	0.4	0.2	0.4
Total	-2.8	-0.8	-0.1	0.9	-0.3	-1.1	-1.0	-0.2	1.0	0.0

Source: Eurostat

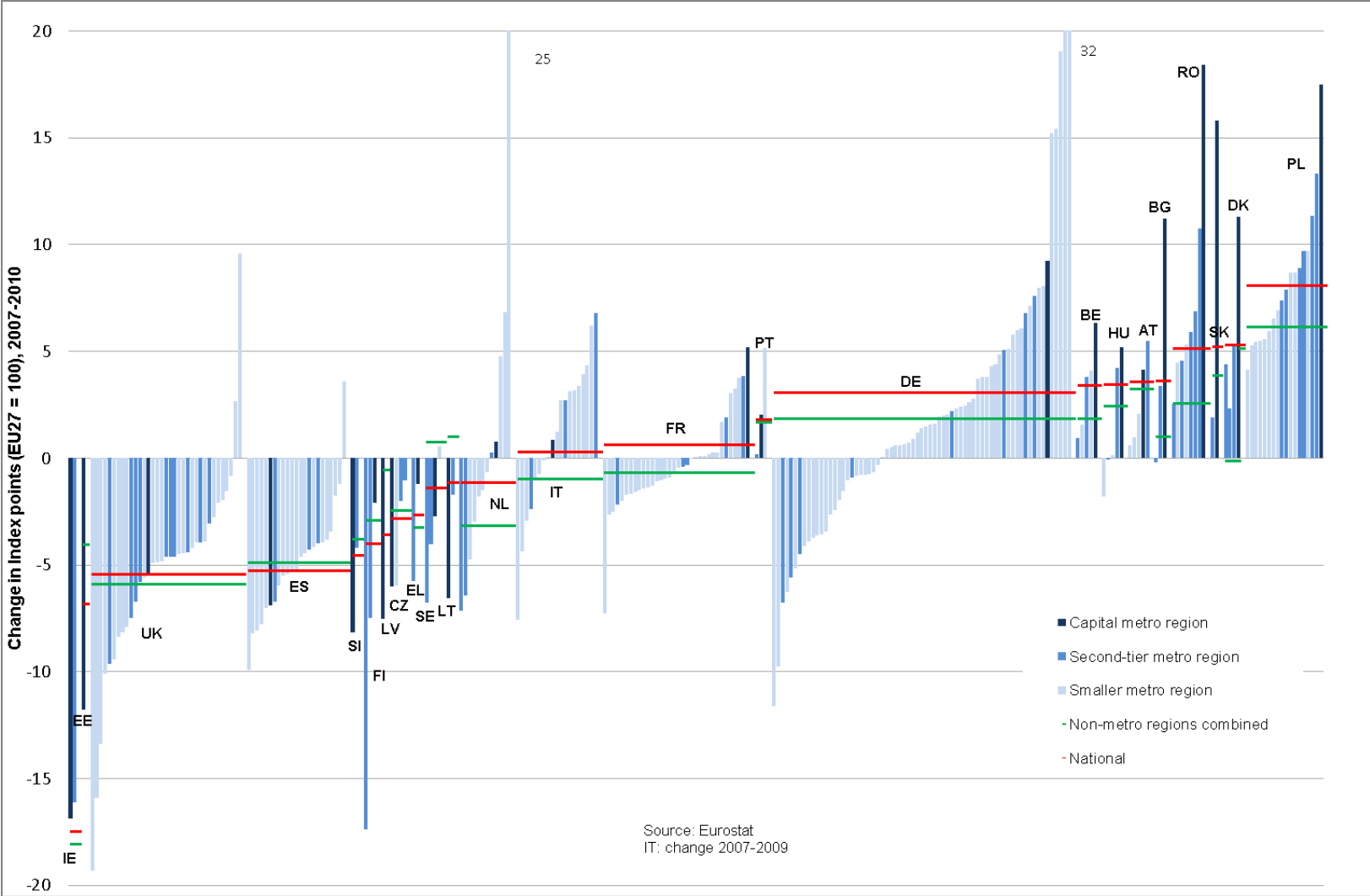
**Figure 3: Changes in GVA and employment by sector per Member State, 2007-2011**

Employment, Annual average % change 2007-2011																											
	LV	IE	GR	LT	EE	ES	PT	DK	HU	BG	IT	SI	UK	RO	FI	FR	NL	CZ	CY	SE	BE	AT	DE	SK	MT	PL	EU27
Agriculture, forestry and fishing	-7.8	-6.9	-1.0	-6.9	-3.0	-2.7	-2.3	-0.7	-2.0	-1.6	-1.3	-2.1	1.6	2.3	-1.2	-2.9	-1.3	-3.3	1.1	0.4	-3.5	-0.9	0.2	-3.6	-1.0	-2.2	-1.1
Industry (except construction)	-7.1	-5.7	-4.1	-4.8	-1.4	-4.9	-3.1	-3.7	-1.2	-4.5	-2.1	-3.8	-2.5	-5.4	-2.2	-2.3	-1.2	-2.3	-1.8	-2.2	-1.9	-0.5	-0.1	-2.2	-4.1	-0.3	-2.2
Construction	-17.2	-20.4	-10.0	-14.2	-11.8	-15.5	-5.0	-4.0	-3.9	-5.2	-1.6	-2.8	-3.0	-1.9	0.5	0.2	-1.1	0.5	-3.3	3.8	1.5	1.5	0.7	2.2	-1.8	5.3	-3.0
Wholesale and retail trade, transport, accomodation and food services	-7.4	-3.1	-1.5	-0.9	-2.3	-1.4	-1.4	-0.5	-0.4	-0.8	-0.2	-0.2	-0.5	-1.4	-0.5	0.1	0.2	0.8	-0.5	1.2	0.0	0.9	0.6	0.8	1.7	1.8	-0.1
Information and communication	-1.1	1.9	-3.6	4.9	5.3	0.2	2.8	-0.5	1.3	1.6	0.8	2.7	0.4	-1.1	1.1	0.8	-0.2	3.4	0.3	-0.3	0.7	1.6	-0.8	3.0	4.6	2.6	0.4
Financial and insurance activities	-4.0	0.1	-0.5	-3.3	1.5	-1.4	0.0	-2.7	4.0	3.8	-0.4	1.1	-0.8	-3.2	3.3	1.1	-2.2	0.9	2.0	-0.3	-0.9	0.3	-0.4	1.6	3.8	1.7	-0.1
Real estate activities	-2.5	-3.6	-6.6	7.9	1.8	0.3	0.6	1.2	-1.2	3.3	1.0	3.0	0.1	-11.9	2.0	-1.7	-0.9	3.9	-1.5	0.6	4.1	1.4	0.2	3.1	-4.5	7.2	0.3
Professional, scientific, technical, administrative and support services	0.9	-3.8	0.3	7.2	3.1	-0.2	1.8	-1.0	2.9	0.9	0.6	1.2	1.0	3.9	3.3	0.2	-0.9	1.7	2.0	2.9	3.6	2.4	3.0	4.9	8.5	6.1	1.5
Public administration, defence, education, health and social work	-2.5	1.4	-1.0	-1.2	0.7	1.4	0.8	0.7	-1.5	-3.4	-0.4	1.8	1.4	-0.4	0.9	0.3	2.2	0.2	2.2	-0.2	1.9	1.5	1.2	0.2	2.1	2.4	0.8
Arts, entertainment, recreation, other services, services employed by households & extra-territorial bodies	-5.4	-0.3	-0.4	7.2	-8.1	-0.5	0.2	0.2	-1.9	-1.9	1.9	1.8	0.3	0.0	2.0	1.5	1.5	2.6	5.7	1.0	-0.1	1.8	0.4	2.2	7.0	2.3	0.7
Total	-6.4	-3.9	-2.1	-2.7	-2.1	-2.7	-1.3	-0.8	-0.9	-2.3	-0.4	-0.8	-0.1	-1.0	0.2	-0.1	0.3	-0.1	0.5	0.4	0.9	0.9	0.8	0.4	1.8	1.4	-0.3
GVA, Annual average % change 2007-2011																											
	LV	IE	GR	LT	EE	ES	PT	DK	HU	BG	IT	SI	UK	RO	FI	FR	NL	CZ	CY	SE	BE	AT	DE	SK	MT	PL	EU27
Agriculture, forestry and fishing	2.8	-0.1	0.2	-0.2	-0.7	1.0	0.2	-0.1	8.3	2.7	-0.5	-0.1	-1.0	0.3	0.6	2.1	1.8	0.2	-0.7	-0.6	3.9	2.2	-3.8	-9.3		0.6	0.8
Industry (except construction)	0.0	4.4	-5.9	0.0	-0.4	-2.0	-1.8	-3.9	-0.4	0.3	-2.8	-1.6	-2.7	2.8	-5.2	-2.1	0.3	3.0	-1.3	-0.9	-0.7	0.7	-0.2	8.1		5.2	-0.9
Construction	-13.5	-20.0	-9.9	-11.3	-5.9	-7.2	-7.3	-4.6	-7.3	-1.3	-4.4	-10.0	-1.5	-5.0	0.3	-3.1	-2.4	-1.4	-9.1	1.2	1.0	-2.6	1.1	4.8		8.8	-2.9
Wholesale and retail trade, transport, accomodation and food services	-2.6	-4.4	-4.5	-1.1	-7.5	0.3	0.2	-2.9	-4.5	0.2	-1.4	-0.7	-1.8	-3.5	0.1	0.5	-0.1	-3.1	0.1	1.7	0.4	-0.2	1.7	-5.4		3.9	-0.2
Information and communication	-5.4	-4.1	2.4	0.7	2.9	3.2	0.7	4.7	5.7	16.7	1.0	1.9	1.4	-3.2	3.0	1.0	-0.2	-0.6	1.7	5.0	1.9	-1.4	4.0	2.8		3.3	1.9
Financial and insurance activities	-4.2	-0.7	-3.1	3.1	-6.5	-2.1	2.1	-0.4	-3.2	5.6	1.5	0.7	-2.3	-3.5	-2.8	1.1	1.3	7.2	4.5	1.3	0.3	3.5	0.9	-1.4		-3.7	-0.2
Real estate activities	-0.6	-5.5	1.2	2.2	3.3	1.0	0.9	1.5	0.2	-1.5	0.0	1.7	1.5	-3.2	1.3	0.8	1.2	4.7	4.5	1.0	1.5	1.7	0.5	4.9		2.5	0.8
Professional, scientific, technical, administrative and support services	-3.9	-3.3	-4.5	-3.0	-0.6	0.7	0.6	0.8	-1.6	0.0	-1.4	0.7	0.6	-1.9	0.7	0.0	-1.4	-0.8	2.7	1.9	1.4	1.7	-1.2	-1.0		4.5	-0.2
Public administration, defence, education, health and social work	-3.9	-3.4	-2.0	-0.7	0.3	2.7	-0.2	0.6	-0.6	-1.4	0.1	1.5	1.3	-2.5	-0.2	1.0	2.6	1.0	3.3	1.4	1.2	1.1	1.8	2.6		1.6	1.2
Arts, entertainment, recreation, other services, services employed by households & extra-territorial bodies	-11.6	0.5	-0.3	-6.4	-7.7	1.0	1.7	0.5	0.0	7.9	0.9	-1.0	0.3	-9.1	1.0	0.8	-0.6	-3.3	4.3	1.6	0.8	0.8	-0.1	2.1		0.7	0.4
Total	-3.4	-2.1	-3.1	-1.5	-1.9	-0.5	-0.4	-1.0	-0.8	1.3	-1.1	-0.8	-0.6	-1.6	-1.0	0.1	0.4	0.9	0.8	1.1	0.7	0.6	0.7	2.1		3.7	0.0

Source: Eurostat

No data available for Luxembourg or for GVA in Malta.

**Figure 4: Change in GDP per head index (PPS) in metro regions, 2007-2010**



**Figure 5: Change in employment in metro regions, 2007-2010**

