



**COUNCIL OF
THE EUROPEAN UNION**



Brussels, 2 September 2013
13223/13
(OR. en)
PRESSE 360

Council adopts position on 2014 EU budget

The Council today¹ adopted² its position on the 2014 EU draft budget ([12222/13](#) + [ADD 1](#) + [ADD 2](#) + [ADD 3](#) + [ADD 4](#) + [ADD 5](#)), the first annual budget relating to the period of the new multiannual financial framework (MFF) covering the years 2014-2020 on which a political agreement was reached by the Council and the European Parliament at the end of June.

The Council's position thoroughly respects the expenditure ceilings of the new MFF while keeping appropriate margins in order to meet possible unforeseen expenditure needs.

The Council's position amounts to

- **EUR 142.23 billion in commitments³** (EUR 141.77 billion if specific instruments outside the multiannual financial framework are excluded; this would leave a margin of EUR 769.25 million);
- **EUR 135.00 billion in payments⁴** (EUR 134.80 billion if specific instruments outside the multiannual financial framework are excluded; this would leave a margin of EUR 1.06 billion).

Compared to the 2013 EU budget as amended by amending budget no 1, commitments decrease by EUR 9.33 billion or 6.15% and payments increase by EUR 1.79 billion or 1.35%.

-
- ¹ The decision was taken by written procedure.
² The Belgian, Danish and United Kingdom delegations abstained.
³ Commitments are legal promises to spend money for activities whose implementation might extend over several financial years.
⁴ This corresponds to 1.00% of the EU's gross national income.

P R E S S

Rue de la Loi 175 B – 1048 BRUSSELS Tel.: +32 (0)2 281 6319 Fax: +32 (0)2 281 8026
press.office@consilium.europa.eu <http://www.consilium.europa.eu/press>

Compared to the amounts proposed by the Commission, the Council's position provides for a reduction by EUR 240.68 million in commitments and EUR 1.06 billion in payments.

New programmes and actions, such as the youth employment initiative, are exempted from reductions which have been targeted on the basis of past and current budget implementation and realistic absorption capacities.

The Council's position serves as a mandate to the Lithuanian presidency to negotiate next year's EU budget with the European Parliament, which is expected to adopt its amendments to the Council's position in the week starting on 21 October. If the Council's and the Parliament's positions diverge, a three-week conciliation period will start on 24 October (until 13 November included) (*see flow-chart in the [annex](#)*).

A summary of the draft Council's position is set out in the tables below:

Multiannual Financial Framework

| | | Budget 2013 (AB No 1/2013 incl.) | | Council's Position on DB 2014 | | Difference (amount) | | Difference (%) | |
|--|--|-------------------------------------|------------------------|----------------------------------|------------------------|------------------------|-----------------------|-------------------|----------------|
| | | c/a | p/a | c/a | p/a | c/a | p/a | c/a | p/a |
| 1 | Smart and inclusive growth | 70 707 677 960 | 59 275 929 632 | 63 761 450 281 | 62 159 951 818 | -6 946 227 679 | +2 884 022 186 | -9,82% | +4,87% |
| | <i>total ceiling available</i> | | | <i>63 973 000 000</i> | | | | | |
| | <i>margin</i> | | | <i>211 549 719</i> | | | | | |
| 1.a | Competitiveness for growth and jobs | 15 749 628 923 | 11 927 534 896 | 16 204 170 281 | 11 268 479 258 | + 454 541 358 | - 659 055 638 | +2,89% | -5,53% |
| | <i>ceiling</i> | | | <i>16 390 000 000</i> | | | | | |
| | <i>margin</i> | | | <i>185 829 719</i> | | | | | |
| 1.b | Economic, social and territorial cohesion | 54 958 049 037 | 47 348 394 736 | 47 557 280 000 | 50 891 472 560 | -7 400 769 037 | +3 543 077 824 | -13,47% | +7,48% |
| | <i>ceiling</i> | | | <i>47 583 000 000</i> | | | | | |
| | <i>margin</i> | | | <i>25 720 000</i> | | | | | |
| 2 | Sustainable growth: natural resources | 59 885 141 416 | 57 240 268 759 | 59 246 121 423 | 56 419 898 785 | - 639 019 993 | - 820 369 974 | -1,07% | -1,43% |
| | <i>ceiling</i> | | | <i>59 303 000 000</i> | | | | | |
| | <i>margin</i> | | | <i>56 878 577</i> | | | | | |
| | Of which: European Agricultural Guarantee Fund (EAGF) — Market related expenditure and direct payments | 43 654 926 842 | 43 660 236 872 | 43 778 100 000 | 43 776 956 403 | + 123 173 158 | + 116 719 531 | +0,28% | +0,27% |
| | <i>ceiling</i> | | | <i>44 130 000 000</i> | | | | | |
| | <i>net transfer between eagf and eafrd</i> | | | <i>- 351 900 000</i> | | | | | |
| | <i>margin</i> | | | <i>0</i> | | | | | |
| 3 | Security and citizenship | 2 361 737 568 | 1 750 224 766 | 2 134 222 376 | 1 657 999 647 | - 227 515 192 | - 92 225 119 | -9,63% | -5,27% |
| | <i>ceiling</i> | | | <i>2 179 000 000</i> | | | | | |
| | <i>margin</i> | | | <i>44 777 624</i> | | | | | |
| 4 | Global Europe | 9 341 336 711 | 6 321 456 958 | 8 158 521 694 | 6 094 707 648 | -1 182 815 017 | - 226 749 310 | -12,66% | -3,59% |
| | <i>ceiling</i> | | | <i>8 335 000 000</i> | | | | | |
| | <i>margin</i> | | | <i>176 478 306</i> | | | | | |
| 5 | Administration | 8 418 432 740 | 8 418 107 740 | 8 441 831 853 | 8 443 454 653 | + 23 399 113 | + 25 346 913 | +0,28% | +0,30% |
| | <i>ceiling</i> | | | <i>8 721 000 000</i> | | | | | |
| | <i>margin</i> | | | <i>279 168 147</i> | | | | | |
| | Of which: Administrative expenditure of the institutions | 6 850 228 657 | 6 849 903 657 | 6 835 090 210 | 6 836 713 010 | - 15 138 447 | - 13 190 647 | -0,22% | -0,19% |
| | <i>ceiling</i> | | | <i>7 056 000 000</i> | | | | | |
| | <i>margin</i> | | | <i>220 909 790</i> | | | | | |
| 6 | Compensations | 75 000 000 | 75 000 000 | 28 600 000 | 28 600 000 | - 46 400 000 | - 46 400 000 | -61,87% | -61,87% |
| | <i>ceiling</i> | | | <i>29 000 000</i> | | | | | |
| | <i>margin</i> | | | <i>400 000</i> | | | | | |
| Multiannual Financial Framework | | 150 789 326 395 | 133 080 987 855 | 141 770 747 627 | 134 804 612 551 | -9 018 578 768 | +1 723 624 696 | -5,98% | +1,30% |
| | <i>total ceiling available</i> | | | <i>142 540 000 000</i> | <i>135 866 000 000</i> | | | | |
| | <i>margin</i> | | | <i>769 252 373</i> | <i>1 061 387 449</i> | | | | |
| Appropriations as % of GNI | | 1,15% | 1,01% | 1,05% | 1,00% | | | | |

AB: Amending budget

DB: Draft budget

Outside MFF

| Description | 1 | | 4 | | 4-1 | | 4/1 | |
|---|-------------------------------------|-------------|----------------------------------|-------------|------------------------|--------------|-------------------|---------|
| | Budget 2013 (AB No 1/2013 incl.) | | Council's Position on DB 2014 | | Difference (amount) | | Difference (%) | |
| | c/a | p/a | c/a | p/a | c/a | p/a | c/a | p/a |
| Emergency Aid Reserve (EAR) | 264 115 000 | 80 000 000 | 297 000 000 | 150 000 000 | + 32 885 000 | + 70 000 000 | +12,45% | +87,50% |
| European Globalisation Adjustment Fund (EGF) | 500 000 000 | 50 000 000 | 159 181 000 | 50 000 000 | - 340 819 000 | | -68,16% | |
| European Union Solidarity Fund (EUSF) | p.m. | p.m. | p.m. | p.m. | | | | |
| Outside the Multiannual Financial Framework (MFF) | 764 115 000 | 130 000 000 | 456 181 000 | 200 000 000 | - 307 934 000 | + 70 000 000 | -40,30% | +53,85% |
| Appropriations as % of GNI | 0,01% | 0,00% | 0,00% | 0,00% | | | | |

AB: Amending budget

DB: Draft budget

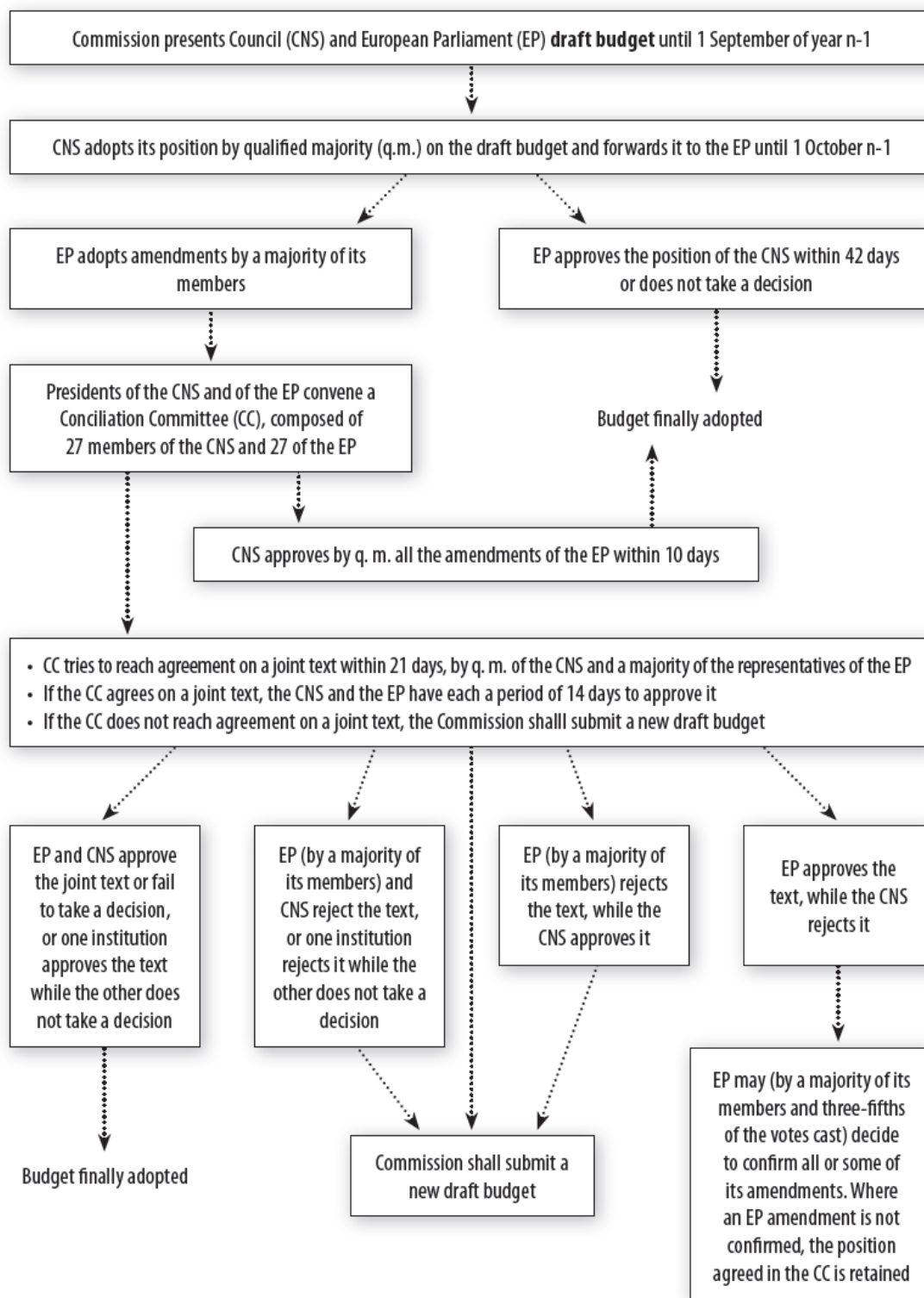
Multiannual Financial Framework + outside MFF

| Description | 1 | | 4 | | 4-1 | | 4/1 | |
|---|-------------------------------------|-----------------|----------------------------------|-----------------|------------------------|----------------|-------------------|---------|
| | Budget 2013 (AB No 1/2013 incl.) | | Council's Position on DB 2014 | | Difference (amount) | | Difference (%) | |
| | c/a | p/a | c/a | p/a | c/a | p/a | c/a | p/a |
| Multiannual Financial Framework | 150 789 326 395 | 133 080 987 855 | 141 770 747 627 | 134 804 612 551 | -9 018 578 768 | +1 723 624 696 | -5,98% | +1,30% |
| Outside the Multiannual Financial Framework (MFF) | 764 115 000 | 130 000 000 | 456 181 000 | 200 000 000 | - 307 934 000 | + 70 000 000 | -40,30% | +53,85% |
| Grand total | 151 553 441 395 | 133 210 987 855 | 142 226 928 627 | 135 004 612 551 | -9 326 512 768 | +1 793 624 696 | -6,15% | +1,35% |
| Appropriations as % of GNI | 1,15% | 1,01% | 1,05% | 1,00% | | | | |

AB: Amending budget

DB: Draft budget

Budget procedure Lisbon Treaty (Art. 314)



CC = Conciliation Committee

CNS = Council

EP = European Parliament

q.m. = qualified majority