



**COUNCIL OF
THE EUROPEAN UNION**

**Brussels, 24 September 2013
(OR. en)**

**13979/13
ADD 1**

**AGRI 598
AGRIORG 115
AGRISTR 104
AGRIFIN 142**

COVER NOTE

From: Secretary-General of the European Commission,
signed by Mr Jordi AYET PUIGARNAU, Director

date of receipt: 20 September 2013

To: Mr Uwe CORSEPIUS, Secretary-General of the Council of the European
Union

No. Cion doc.: SWD(2013) 335 final

Subject: COMMISSION STAFF WORKING DOCUMENT Accompanying the
document REPORT FROM THE COMMISSION TO THE EUROPEAN
PARLIAMENT, THE COUNCIL, THE EUROPEAN ECONOMIC AND
SOCIAL COMMITTEE AND THE COMMITTEE OF THE REGIONS
Second Report on the implementation of the national strategy plans and the
Community strategic guidelines for rural development (2007-2013)

Delegations will find attached document [SWD\(2013\) 335 final](#).

Encl.: [SWD\(2013\) 335 final](#)



Brussels, 19.9.2013
SWD(2013) 335 final

COMMISSION STAFF WORKING DOCUMENT
Accompanying the document

**REPORT FROM THE COMMISSION TO THE EUROPEAN PARLIAMENT, THE
COUNCIL, THE EUROPEAN ECONOMIC AND SOCIAL COMMITTEE AND THE
COMMITTEE OF THE REGIONS**

**Second Report on the implementation of the national strategy plans and the Community
strategic guidelines for rural development (2007-2013)**

{COM(2013) 640 final}

**Table 1: EAFRD expenditure realized 2007-2011, EAFRD total allocation 2007-2013
and uptake level¹**

Measures code	Measures	Number of RDP implementing the measures (max 88)	EAFRD 2007-2011	Total allocation 2007-2013 ²	uptake level
111	Vocational training and information actions	68	298 617 798	999 056 425	30%
112	Setting-up of young farmers	69	1 412 405 220	2 798 849 247	50%
113	Early retirement	49	1 438 388 559	2 604 494 367	55%
114	Use of advisory services	38	45 237 312	340 902 584	13%
115	Setting up of farm management, relief and advisory services	23	13 734 976	86 466 959	16%
121	Modernisation of agricultural holdings	87	5 582 343 255	11 034 896 061	51%
122	Improvement of the economic value of forests	43	138 778 254	591 708 043	23%
123	Adding value to agricultural and forestry products	84	1 929 723 380	5 557 735 472	35%
124	Cooperation for development of new products, processes and technologies	33	48 427 562	334 315 129	14%
125	Infrastructure related to the development and adaptation of agriculture and forestry	74	1 392 533 471	4 903 234 347	28%
126	Restoring agricultural production potential damaged by natural disasters and introducing appropriate prevention actions	17	217 561 916	502 441 164	43%
131	Meeting standards based on Community legislation	16	52 069 512	80 520 102	65%
132	Participation of farmers in food quality schemes	37	37 548 151	209 187 923	18%
133	Information and promotion activities	27	31 274 777	197 345 474	16%
141	Semi-subsistence farming	8	487 185 979	951 110 453	51%
142	Producer groups	11	89 750 229	328 049 108	27%
143	Providing farm advisory and extension services	1	2 453 863	131 773 438	2%
144	Restructuring due to reform of common market organization	2	69 059 681	186 497 835	37%
Total Axis 1			13 287 093 895	31 838 584 131	42%
211	Payments to farmers in areas with handicaps (Article 36 (a) (i) of Reg. (EC) No 1698/2005)	60	4 594 389 313	6 246 772 115	74%
212	Payments to farmers in areas with handicaps in mountain areas (Article 36 (a) (ii) of Reg. (EC) No 1698/2005)	75	4 841 186 389	7 200 409 826	67%
213	Natura 2000 payments and payments linked to Directive 2000/60/EC (WFD)	22	107 971 239	451 776 171	24%
214	Agri-environment commitments	88	13 357 072 296	23 005 385 161	58%

¹ Source: DG AGRI, allocation as at end 2011. The calendar year expenditure cannot be compared to the 5th Financial Report of the Commission to the European Parliament and the Council on the implementation of EAFRD which is based on financial year.

² Total allocation do not include 75€million not programmed by PT (as at end of 2011)

215	Animal welfare payments	23	260 089 426	519 687 754	50%
216	Non-productive investments	39	146 813 651	571 183 820	26%
221	First afforestation of non-agricultural land	63	892 426 729	2 192 630 309	41%
222	First establishment of agroforestry systems on agricultural land	2	186 729	18 736 199	1%
223	First afforestation of non-agricultural land	26	74 020 161	327 100 024	23%
224	Natura 2000 payments	11	12 937 018	92 479 889	14%
225	Forest-environment payments	25	25 439 630	218 162 448	12%
226	Restoring forestry potential and introducing prevention actions	52	664 068 088	1 700 526 186	39%
227	Non-productive investments	61	214 660 860	746 932 381	29%
Total Axis 2			25 191 261 530	43 291 782 283	58%
311	Diversification into non-agricultural activities	61	390 814 424	1 327 371 823	29%
312	Business creation and development	36	442 017 928	2 029 433 548	22%
313	Encouragement of tourism activities	53	261 489 658	1 262 328 360	21%
321	Basic services for the economy and rural population	58	1 002 898 171	3 266 178 302	31%
322	Village renewal and development	44	1 367 247 678	3 251 866 027	42%
323	Conservation and upgrading of the rural heritage	58	392 731 769	1 293 498 677	30%
331	Training and information for economic actors operating in the fields covered by Axis 3	24	33 486 118	131 604 782	25%
341	Skills acquisition, animation and implementation	27	55 788 398	137 213 139	41%
Total Axis 3			3 946 474 145	12 699 494 658	31%
411	Implementing local development strategies - axis 1	43	60 014 662	499 862 233	12%
412	Implementing local development strategies - axis 2	22	7 028 810	163 952 486	4%
413	Implementing local development strategies - axis 3	70	693 901 763	3 948 029 004	18%
421	Implementing cooperation projects	37	16 842 100	281 635 728	6%
431	Running the local action group, acquiring skills and animating the territory	85	302 251 571	982 080 048	31%
Total Axis 4			1 080 038 906	5 875 559 499	18%
511	Technical assistance		522 004 590	1 891 553 191	28%
611	Direct Payments (RO and BG)		437 324 358	645 581 697	68%
Grand Total			44 464 197 424	96 242 555 459	46%

Table 2: HC/EERP EAFRD expenditure realized 2007-2011, HC and EERP allocation 2007-2013 and uptake level (million €)³

HC and EERP challenges	EAFRD Expenditure (2010-2011)	Allocation (2010-2013)	Uptake level
Climate change	369.2	704.2	52%
Renewable energy	22.7	275.4	8%
Water management	163.9	1 332.2	12%
Biodiversity	498.5	1 542.0	32%
Restructuring dairy sector	172.9	715.6	24%
Innovative approaches (new challenges)	1.4	15.8	9%
Broadband infrastructure	43.1	360.4	12%
Total	1 271.7	4 945.6	26%

³ Source: DG AGRI, allocation as at 2010. Indicative expenditure based on CMEF monitoring data 2011

**Table 3(a): Monitoring output indicators 2007-2011, and targets 2007-2013
(including HC as at end 2011) ⁴**

Code	Measure	Output	Unit	Value (2007-2011)	Targets 2007-2013	% target
111	Vocational training and information actions	Number of participants in training	N.	2 420 490	3 478 471	70%
112	Setting up of young farmers	Number of assisted young farmers	N.	99 930	185 014	54%
113	Early retirement	Number of beneficiaries	N.	27 032	41 780	65%
		Number of hectares released	Ha	445 037	606 556	73%
114	Use of advisory services	Number of farmers supported	N.	90 052	554 549	16%
		Number of forest holders supported	N.	1 619	40 251	4%
115	Setting up of management, relief and advisory services	Number of newly set up management, relief or advisory services	N.	556	775	72%
121	Modernisation of agricultural holdings	Number of farm holdings that received investment support	N.	219 649	598 139	37%
122	Improvement of the economic value of forests	Number of forest holdings that received investment support	N.	12 601	59 459	21%
123	Adding value to agricultural and forestry products	Number of enterprises supported	N.	15 768	35 242	45%
124	Cooperation for development of new products, processes and technologies	Number of cooperation initiatives supported	N.	1 416	5 712	25%
125	Infrastructure related to the development and adaptation of agriculture and forestry	Number of operations supported	N.	28 196	46 780	60%
126	Restoring agricultural production potential damaged by natural disasters and prevention actions	Supported area of damaged agricultural land	Ha	351 866	1 412 591	25%

⁴

Source: RDIS IDIM 2011, outputs indicators for commitments made from 2007 onwards

131	Meeting standards based on Community legislation ⁵	Number of beneficiaries	N.	16 344	66 311	25%
132	Participation of farmers in food quality schemes	Number of supported farm holdings participating in a quality scheme	N.	224 134	284 384	79%
133	Information and promotion activities	Number of supported actions	N.	4 534	6 008	75%
141	Semi-subsistence farming	Number of semi-subsistence farm holdings supported	N.	39 299	105 422	37%
142	Producer groups	Number of supported producer groups	N.	888	2 132	42%
LFA	Support to Less Favoured Areas	Number of supported holdings in LFAs	N.	2 800 00	3 000 000	93%
		Supported agricultural land in LFAs	Ha	52 800 000	55 000 000	96%
213	Natura 2000 payments and payments linked to Directive 2000/60/EC (WFD)	Number of supported holdings in Natura 2000 areas/under WFD	N.	51 065	63 123	81%
		Supported agricultural land under Natura 2000/under WFD	Ha	898 289	1 332 965	67%
214	Agri-environment payments	Number of farm holdings	N.	2 515 434	3 154 024	80%
		Physical area under agri-environmental support	Ha	41 000 000	47 000 000	87%
215	Animal welfare payments	Number of animal welfare contracts	N.	144 653	169 383	85%
216	Non-productive investments	Number of farm holdings	N.	16 864	107 918	16%
221	First afforestation of agricultural land	Number of beneficiaries receiving support	N.	29 655	111 921	26%
		Number of ha afforested land	Ha	165 634	573 440	29%
222	First establishment of agroforestry systems on agricultural land	Number of beneficiaries	N.	64	3 422	2%
		Number of ha under new agroforestry systems	Ha	637	41 236	2%
223	First afforestation of non-agricultural land	Number of beneficiaries receiving support	N.	5 368	27 652	19%
		Number of ha of afforested land	Ha	48 348	190 792	25%

⁵ FR not included

224	Natura 2000 payments	Number of forest holdings receiving aid in Natura 2000 area	N.	7 328	35 449	21%
		Supported forest land (ha) in Natura 2000 area	Ha	117 580	303 161	39%
225	Forest-environment payments	Number of forest holdings receiving support	N.	6 903	71 219	10%
		Physical forest area under forest environment support	Ha	246 938	898 015	27%
226	Restoring forestry potential and introducing prevention actions	Number of prevention/restoration actions	N.	43 303	128 575	34%
227	Non-productive investments	Number of supported forest holders	N.	61 786	118 775	52%
311	Diversification into non-agricultural activities	Number of beneficiaries	N.	18 961	62 117	31%
312	Business creation and development	Number of micro-enterprises supported/created	N.	19 139	77 397	25%
313	Encouragement of tourism activities	Number of new tourism actions supported	N.	10 539	34 656	30%
321	Basic services for the economy and rural	Number of supported actions	N.	35 372	87 473	40%
322	Village renewal and development	Number of villages where actions took place	N.	27 697	27 619	100%
323	Conservation and upgrading of the rural heritage	Number of rural heritage actions supported	N.	48 399	71 342	68%
331	Training and information	Number of economic actors participating	N.	364166	758 664	48%
341	Skills acquisition, animation and implementation	Number of actions supported	N.	5 583	5 225	107%
414 412 413	Implementing local development strategies	Number of projects financed by LAGs	N.	54 810	220 222	25%
421	Implementing cooperation projects	Number of cooperation projects	N.	1 327	4 606	29%
431	Running the local action group, acquiring skills and animating the territory	Number of actions supported	N.	84 260	89 895	94%

Table 3(b) Selection of main relevant target indicators (outputs) per priority for the HC/EERP budget defined in the Rural Development Programmes⁶ and realization by the end of 2011

<i>Priority/indicators</i>	<i>Unit of measure</i>	<i>Targets</i>	<i>Values (2011)</i>	<i>%</i>
Climate Change				
Improvement of energy efficiency	total volume of investments ⁷ (million EUR)	243	103	30%
Improve efficiency of nitrogen fertiliser use	total volume of investments (million EUR)	104		
Soil management practices (measure 214)	N of ha supported (million ha)	1.4	0.5	36%
Extensive livestock (measure 214)	N of ha supported (million ha)	2.6	2	77%
Afforestation and the establishment of agro-forestry system	N of ha supported (ha)	10,000	1263	13%
Renewable energy				
Installations/infrastructure for renewable energy using biomass and other renewable energy sources (solar and wind power, geothermal)	total volume of investments (million EUR)	248	129	26%
Processing of agricultural/forest biomass for renewable energy	total volume of investments (million EUR)	197		
Biogas production using organic waste (on farm and local production)	total volume of investments (million EUR)	62		
Water management				
Water storage (including water overflow areas) – Axis 1	total volume of investments (million EUR)	184	186	25%

⁶ As at beginning of 2010

⁷ Total amount (= the sum of all public and private expenditure) of all the tangible and/or intangible investments related to the supported operations.

Water savings technologies (e.g. efficient irrigation systems) – Axis 1	total volume of investments (million EUR)	568		
Westland restoration (measure 216)	total volume of investments (million EUR)	119	12.3	10%
Meandering rivers (measure 323)	total volume of investments (million EUR)	71	13.4	19%
Biodiversity				
Extensive forms of livestock management (measure 214)	N of ha supported (million ha)	3.60	2.7	75%
Integrated and organic production (measure 214)	N of ha supported (million ha)	1.58	0.77	49%
Land use change (extensive grassland management) (measures 216 and 323)	total volume of investments (million EUR)	76	29	38%
Restructuring of dairy sector				
Investments related to dairy production (measure 121)	total volume of investments (million EUR)	1,116	724	65%
Improvements in processing and marketing related to dairy sector (measure 123)	total volume of investments (million EUR)	270	41	15%
Broadband infrastructure				
Creation and enabling of access to broadband infrastructure	total volume of investments (million EUR)	383	94	25%
Upgrade of existing broadband infrastructure	total volume of investments (million EUR)	175	2	1%
Laying down passive broadband infrastructure	total volume of investments (million EUR)	129	15	12%

Table 3(c): Monitoring result indicators 2007-2011, and targets 2007-2013⁸

	result indicators		2007-2011 values	Targets ⁹
AXIS 1	Number of participants that successfully ended a training activity related to agriculture and/or forestry		1 353 000 (49%)	2 774 000
	Increase in GVA in supported holdings/enterprises ('000 EUR)		7 252 000 (29%) ¹⁰	25 000 000
	Number of holdings / enterprises introducing new products and/or new techniques		73 600 (29%)	252 000
	Number of farms entering the market		2 679 (3%)	82 000
	Value of agricultural production under recognized quality label/standards (millions of euros)		13 200 (45%) ¹¹	29 200
Axis 2	Agricultural and forestry areas under successful land management contributing to (ha) ¹²	Biodiversity	50 300 000 (>100%)	49 800 000
		Water quality	31 600 000 (91%)	34 600 000
		Climate change	31 800 000 (>100%)	23 400 000
		Soil quality	39 500 000 (>100%)	32 000 000
		Avoidance marginalisation	47 700 000 (92%)	52 000 000
Axis3	Increase in Non-agricultural gross value added in supported business ('000 EUR)		1 147 000 (28%)	4 000 000
	Gross number of jobs created		20 162 (8%)	241 000
	Additional number of tourist visits	Number of day visitors	4 121 911 (43%)	9 500 000
		Number of overnight stays	1 722 051 (20%)	8 300 000
	Population in rural areas benefiting from improved services		62 000 000 (70%)	88 000 000
	Increase in internet penetration in rural areas (nbr of persons)		3 491 911 (37%)	9 300 000
	Number of participants that successfully ended a training activity in the field of axis 3		244 007 (57%)	425 000

⁸Source: AGRI, outputs indicators for commitments made from 2007 onwards (including HC as at end 2012)

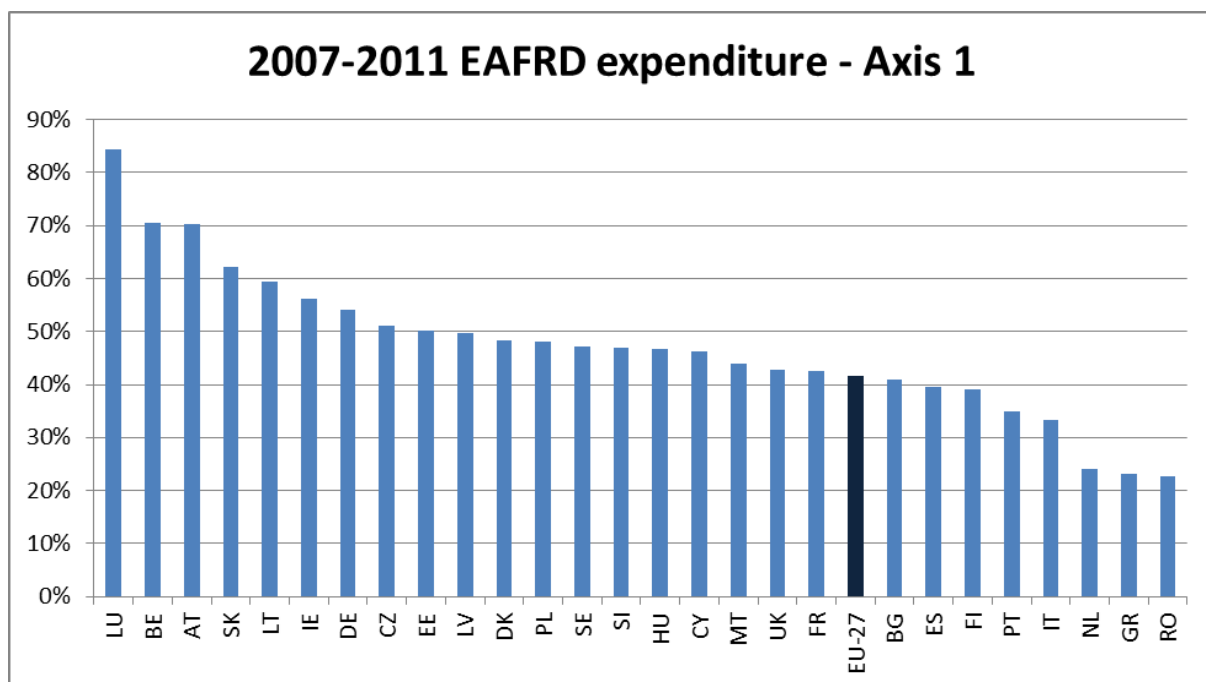
⁹ BG and ES CYL non included

¹⁰ EL, HU and PT non included

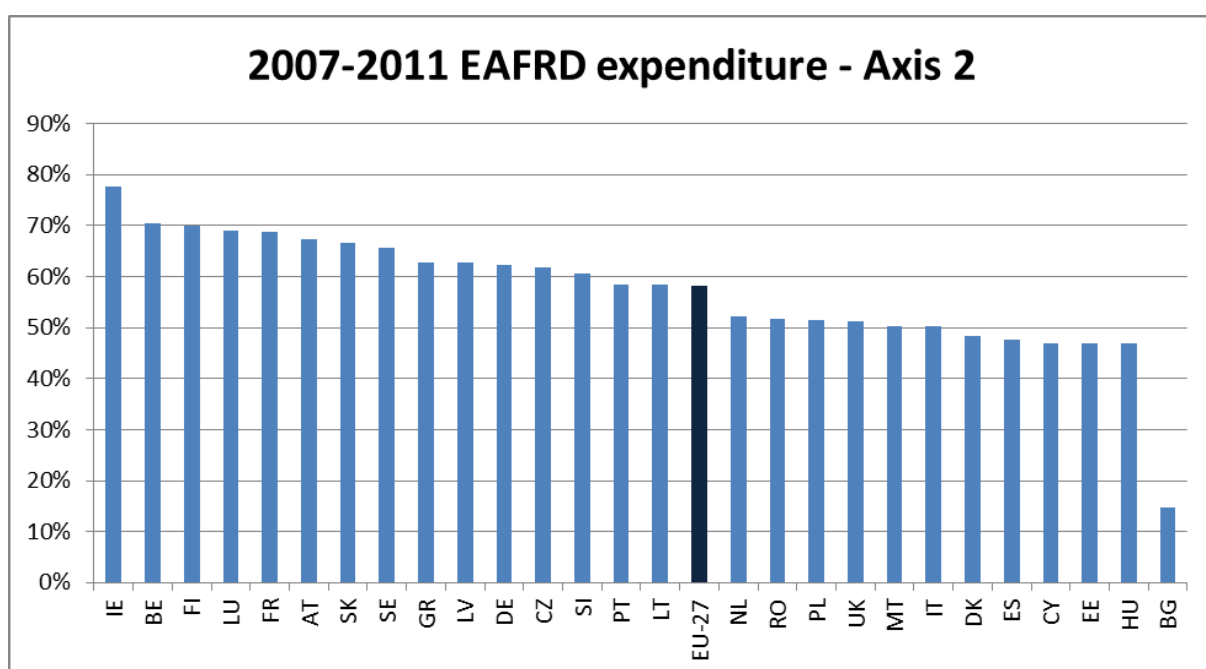
¹¹ ES CAT RDP not included

¹² LT, UK, IE, ES, PL, SK: data from 2010 APR

Table 4: Overall execution of the EAFRD budget by the end of 2011 compared to the overall 2007-2013 allocation, axis per axis¹³



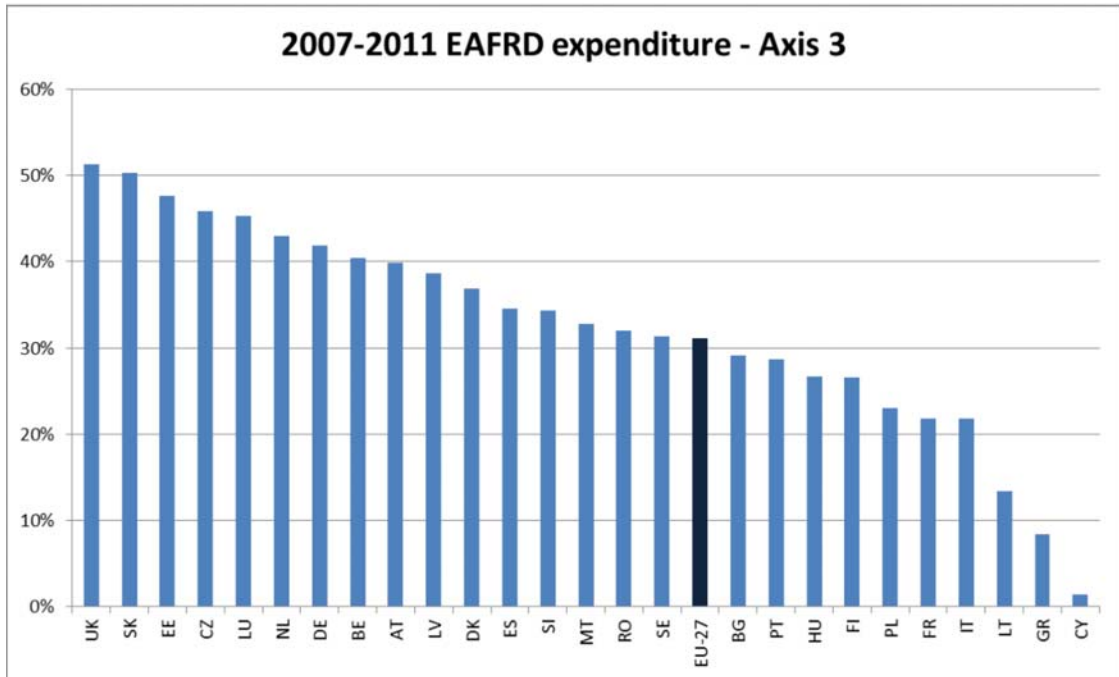
EU-27 average: 42%



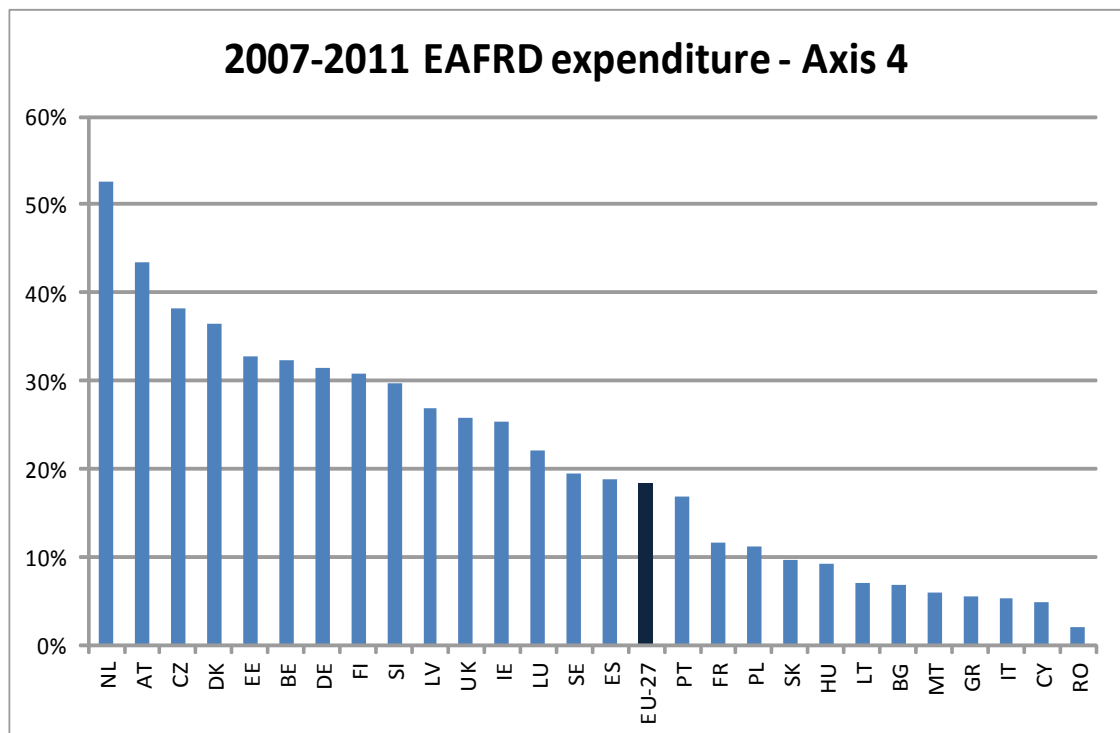
EU-27 average: 58%

¹³

Sources: DG AGRI



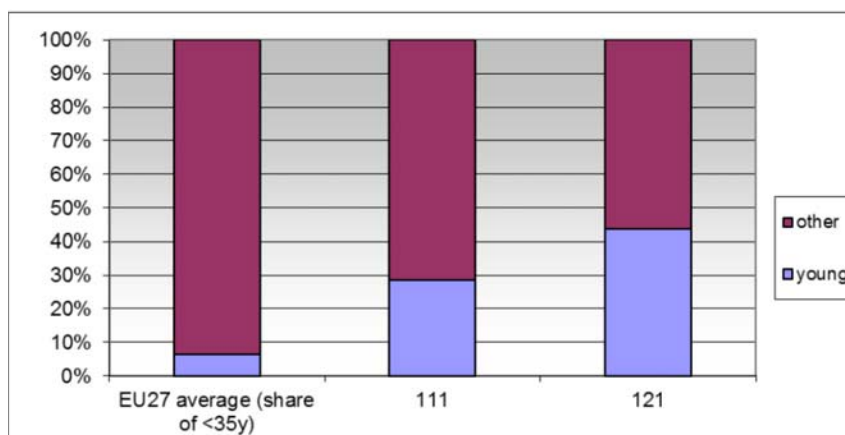
EU-27 average: 31%



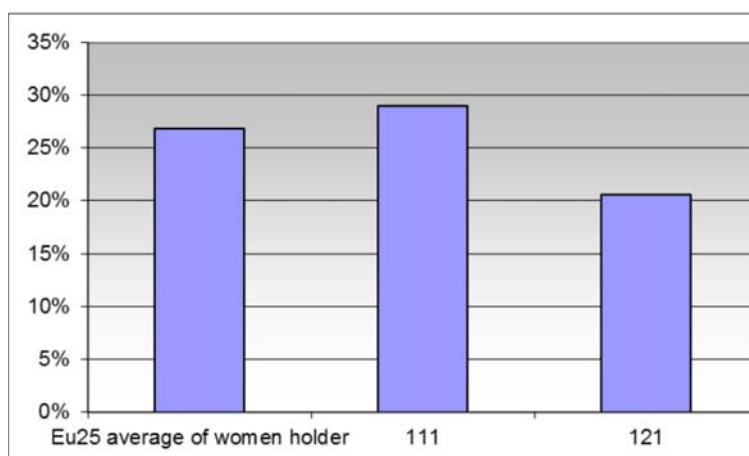
EU-27 average: 18%

Table 5: axis 1 and axis 3 implementation break down according gender and age as laid down in the Art. 81 of the Reg. (EC) No 1698/2005¹⁴

Share of the beneficiaries under 40 years for the measures training (111) and modernisation (121) compared to the EU27 share of young holders

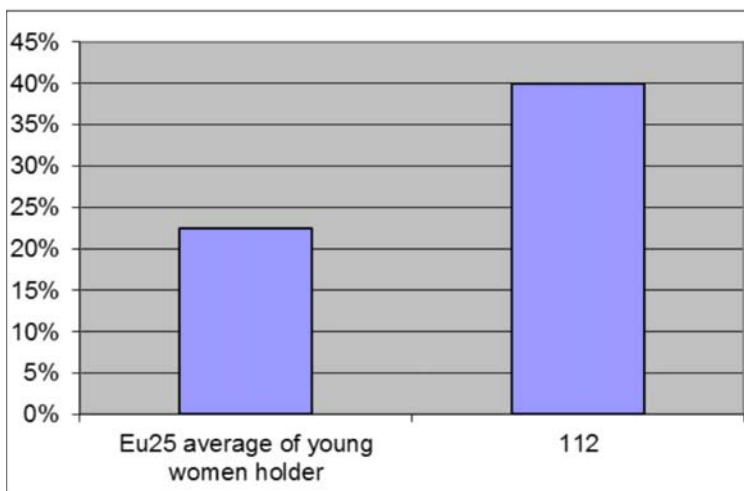


Share of women beneficiaries for the measures training (111) and modernisation (121) compared to the EU-25 share of women holders for the whole sector¹⁵

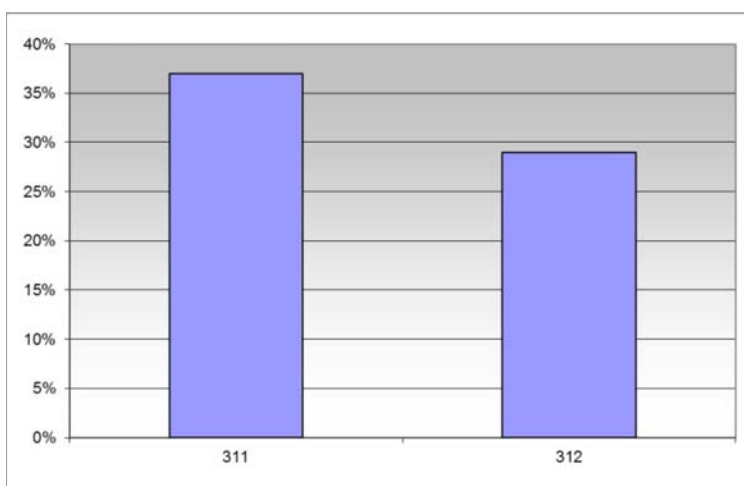


¹⁴ Source: RDIS IDIM 2011, outputs indicators for commitments made from 2007 onwards
¹⁵ Eurostat

Share of women beneficiaries for the measure young farmer (112) compared to the EU-25 share of young women holders for the whole sector¹⁶



Share of women beneficiaries for the measures diversification (311) and micro enterprises support (312)



¹⁶

Eurostat

