

EN



COMMISSION OF THE EUROPEAN COMMUNITIES

Brussels, 13.11.2008
SEC(2008) 2871
VOLUME II

COMMISSION STAFF WORKING DOCUMENT

accompanying the

**COMMUNICATION FROM THE COMMISSION TO THE EUROPEAN
PARLIAMENT, THE COUNCIL, THE EUROPEAN ECONOMIC AND SOCIAL
COMMITTEE AND THE COMMITTEE OF THE REGIONS**

Second Strategic Energy Review

AN EU ENERGY SECURITY AND SOLIDARITY ACTION PLAN

Europe's current and future energy position
Demand – resources - investments

{COM(2008) 781 final}
{SEC(2008) 2870}
{SEC(2008) 2872}

Part B
Statistical Annex
Current national energy positions

Annotations

Total primary energy supply – shows the share of energy sources in the energy mix. It is the quantity of energy consumed within the borders of a country. It is calculated using the formula: primary production + recovered products + imports + stock changes - exports - bunkers (i.e. quantities supplied to sea-going ships).

Total final consumption – (Mtoe) - is the energy finally consumed in the transport, industrial, commercial, agricultural, public and household sectors. It excludes deliveries to the energy conversion sector and to the energy industries themselves.

Electricity mix – shows the share of the various energy sources used for electricity generation.

Electricity generation – (TWh) – is the quantity of electricity produced within the borders of a country.

Indigenous production - shows the share of energy sources extracted and used from domestic natural sources. The precise definition depends on the fuel involved.

Coal - quantities of fuels extracted or produced, calculated after any operation to remove inert matter. In general, production includes the quantities consumed by the producer during the production process (e.g. for heating or operation of equipment and auxiliaries) plus any quantities supplied to other on-site producers of energy for conversion or other uses.

Crude oil - quantities of fuels extracted or produced within national boundaries, including offshore production. Production includes only marketable production and excludes any quantities returned to formation. Production includes all crude oil, natural gas liquids (NGL), condensates and oil from shale and tar sands, etc.

Natural gas - quantities of dry gas, measured after purification and extraction of natural gas liquids and sulphur. Production includes only marketable production, and excludes any quantities re-injected, vented and flared, and any extraction losses. Production includes all quantities used within the natural gas industry, in gas extraction, pipeline systems and processing plants.

Nuclear - quantities of heat produced in a reactor. Production is the actual heat produced or the heat calculated on the basis of the gross electricity generated and the thermal efficiency of the nuclear plant. All nuclear production is set as fully indigenous.

Renewables

Geothermal - quantities of heat extracted from geothermal fluids. Production is calculated on the basis of the difference between the enthalpy of the fluid produced in the production borehole and that of the fluid disposed of via the re-injection borehole.

Biomass/Waste - in the case of municipal solid wastes (MSW), wood, wood wastes and other solid wastes, production is the heat produced after combustion and corresponds to the heat content (NCV) of the fuel. In the case of anaerobic digestion of wet wastes, production is the heat content (NCV) of the biogases produced. Production includes all quantities of gas consumed in the installation for the fermentation processes, and excludes all quantities of flared gases. In the case of biofuels, production is the heat content (NCV) of the fuel.

Hydro – electricity generated by hydro power plant includes small hydro. Tide, Wave, Ocean power plants are included as well, because Eurostat is using it in this way.

Wind - electricity generated by onshore and offshore wind power plants. Figures are set for the end of 2004, while there was a significant increase of new installed Wind Power Plants in 2005.

Net imports by fuels (Mtoe) – share of all energy sources imported, excluding all nuclear, which is set as indigenous by Eurostat. Net electricity imports are included.

Imports of crude oil - imported crude oil divided by countries of origin, EU-27 is counted without imports inside the EU.

Imports of natural gas - imported natural gas divided by countries of origin, EU-27 is counted without imports inside the EU.

Imports of hard coal - imported hard coal divided by countries of origin, EU-27 is counted without imports inside the EU.

Final energy intensity – is calculated as final energy demand divided by value added at basic prices. For some industrial sectors, like the iron and steel industry, the non-ferrous metals industry and the engineering industry, it was not possible to calculate energy intensity values, as the value added at basic prices is not given for these definitions of sectors in the national accounts data from Eurostat. In contrast to primary energy intensity, final energy intensity does not consider the efficiency of the energy transformation sector.

CO₂ Emissions per capita – are calculated as total CO₂ emissions divided by total population

CO₂ intensity – is calculated by dividing the total CO₂ emissions by the gross inland energy consumption. It is an indicator for the carbon intensity of the energy system.

Import dependency – net imports of a country or region divided by the sum of the gross inland consumption and bunkers of that energy carrier. "All Fuels" shows the import dependency for oil, gas, solid fuels, electricity and renewables in total. The aggregate "renewables" considers all forms of renewable energy carriers, like electricity from wind or hydro power as well as biofuels and biomass in general. A negative import dependency has to be interpreted as net exports.

Industry – the sector is defined according to the following NACE codes: D (Manufacturing) + F (Construction) – DF (Manufacture of energy products)

Non-Metallic Mineral Products Industry – the sector is defined according to the NACE code DI "Manufacture of other non-metallic mineral products", which includes for example the manufacture of cement, clinker and glass products.

Chemical Industry – the sector is defined according to NACE code DG "Manufacture of chemicals, chemical products and man-made fibres"

Food, Drink and Tobacco Industry – the sector is defined according to NACE code DA "Manufacture of food products; beverages and tobacco"

Paper and Printing Industry – the sector is defined according to NACE code DE "Manufacture of pulp, paper and paper products; publishing and printing"

Services - the sector is defined according to the following NACE codes: G + H + J + K + L + M + N + O

Transport – the sector covers all types of transport. To calculate energy intensity the final energy consumption in transport was divided by the value added at basic prices of the whole economy.

Abbreviations

Mtoe – million tonnes of oil equivalent.

1000T – kilo tonnes

TWh – Terawatt hours.

TJ – Tera joules

Meuro – Million Euros

Mt – Million tonnes

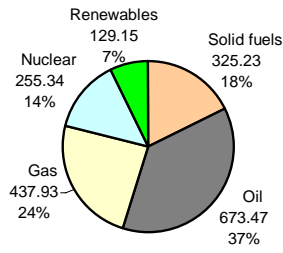
Cap – capita

Sources

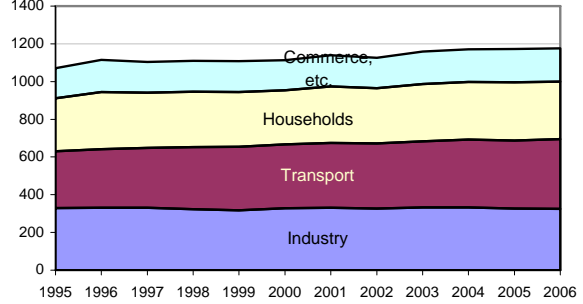
All data are 2006 data from Eurostat, unless otherwise stated.

EU-27

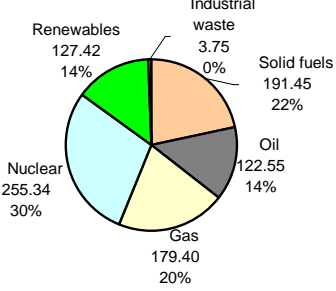
EU27, GROSS INLAND CONSUMPTION (ENERGY MIX in Mtoe, %) (2006)



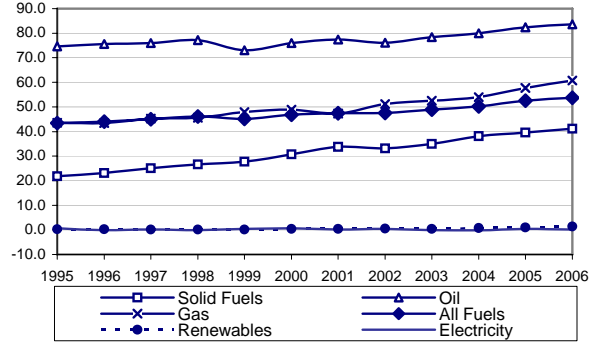
EU27, TOTAL FINAL CONSUMPTION (Mtoe)



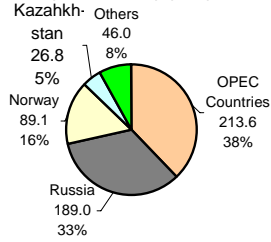
EU27, PRIMARY PRODUCTION AND RECOVERED PRODUCTS (in Mtoe, %) (2006)



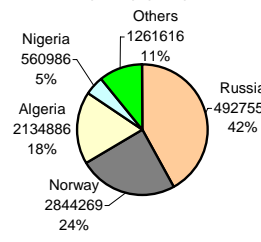
EU27, IMPORT DEPENDENCY (%)



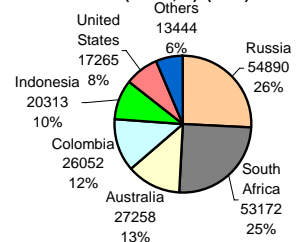
EU27, IMPORTS OF CRUDE OIL (Mio tonnes, %) (2006)



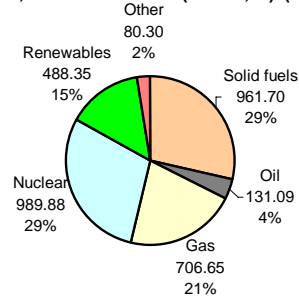
EU27, IMPORTS OF NATURAL GAS (TJ, %) (2006)



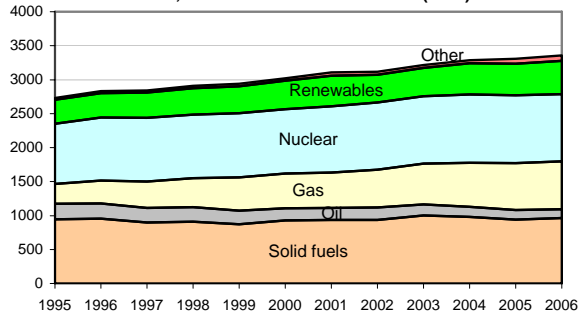
EU27, IMPORTS OF HARD COAL (1000T, %) (2006)



EU27, ELECTRICITY MIX (in TWh, %) (2006)

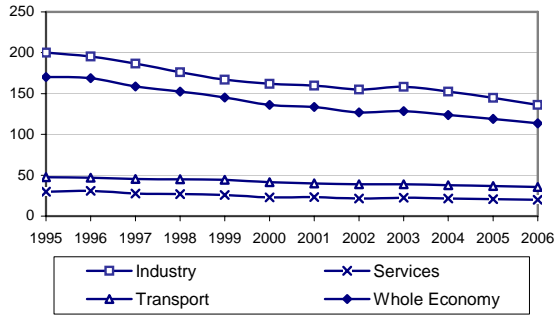


EU27, ELECTRICITY GENERATION (TWh)

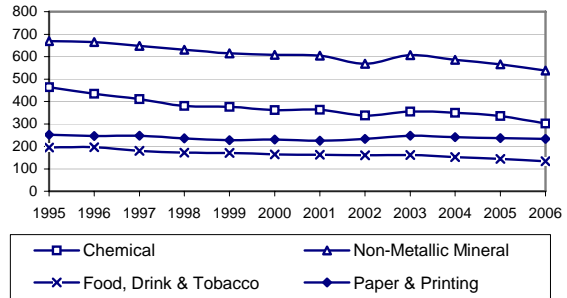


EU-27

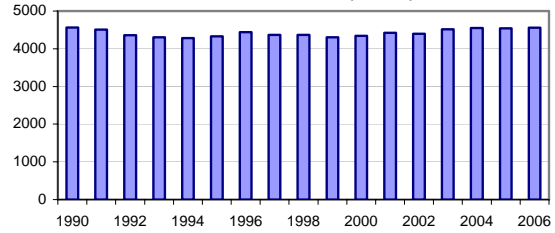
EU27, FINAL ENERGY INTENSITY (toe/Meuro)



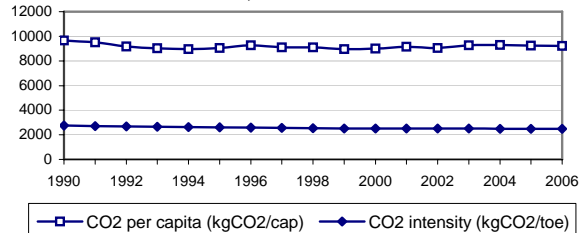
EU27, FINAL ENERGY INTENSITY FOR SELECTED INDUSTRIAL SECTORS (toe/Meuro)



EU27, CO2 EMISSIONS (Mt CO2)

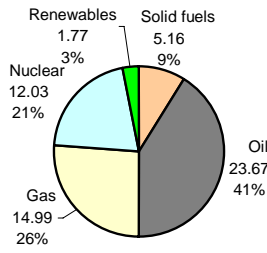


EU27, CO2 INDICATORS

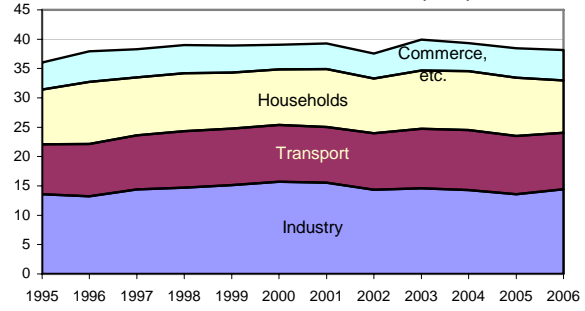


Belgium

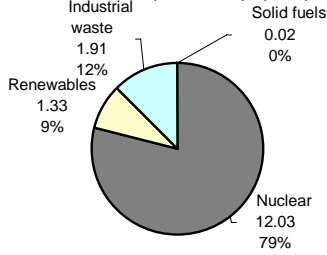
BE, GROSS INLAND CONSUMPTION (ENERGY MIX in Mtoe, %) (2006)



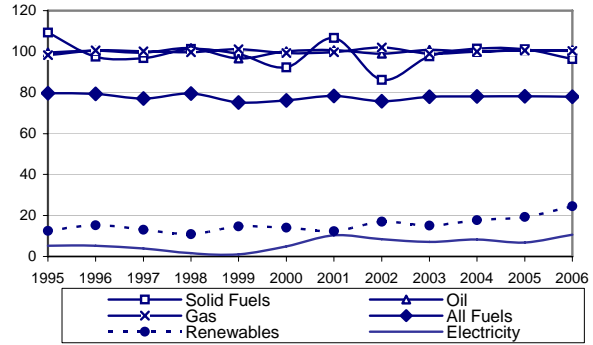
BE, TOTAL FINAL CONSUMPTION (Mtoe)



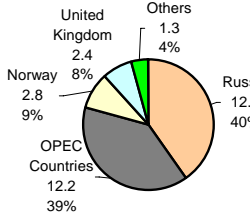
BE, PRIMARY PRODUCTION AND RECOVERED PRODUCTS (in Mtoe, %) (2006)



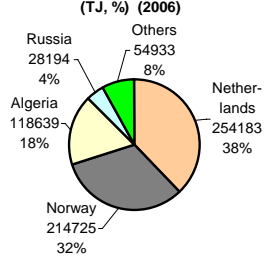
BE, IMPORT DEPENDENCY (%)



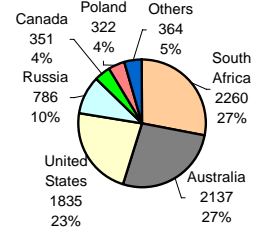
BE, IMPORTS OF CRUDE OIL (Mio tonnes, %) (2006)



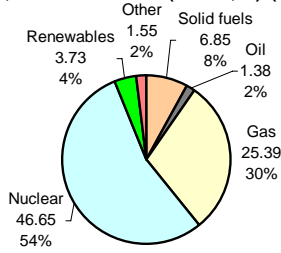
BE, IMPORTS OF NATURAL GAS (TJ, %) (2006)



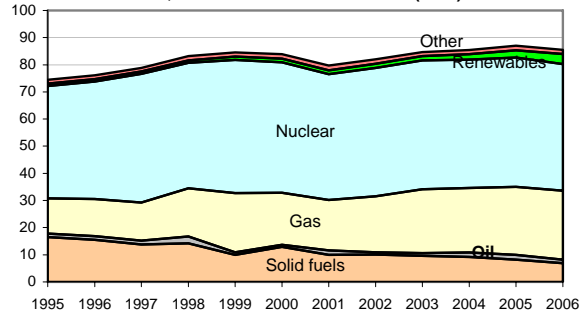
BE, IMPORTS OF HARD COAL (1000T, %) (2006)



BE, ELECTRICITY MIX (in TWh, %) (2006)

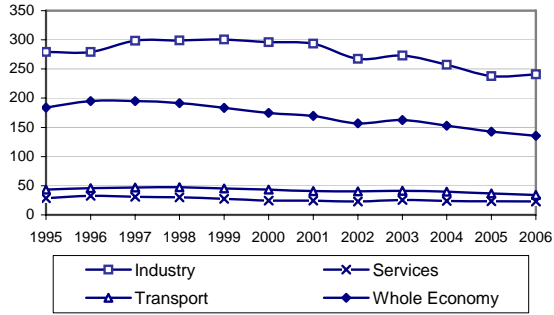


BE, ELECTRICITY GENERATION (TWh)

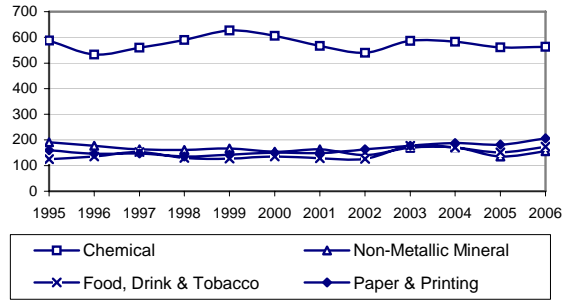


Belgium

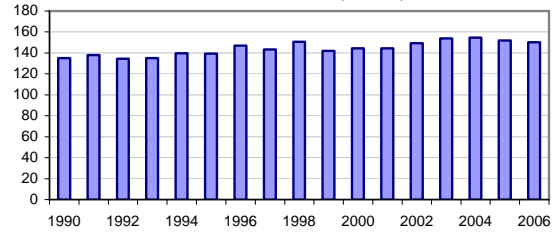
BE, FINAL ENERGY INTENSITY (toe/Meuro)



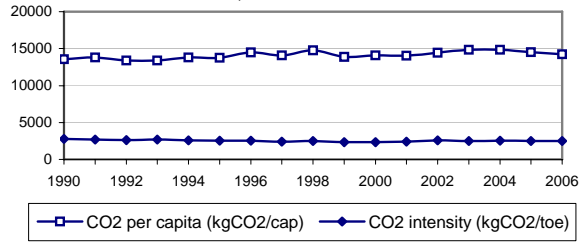
BE, FINAL ENERGY INTENSITY FOR SELECTED INDUSTRIAL SECTORS (toe/Meuro)



BE, CO2 EMISSIONS (Mt CO2)

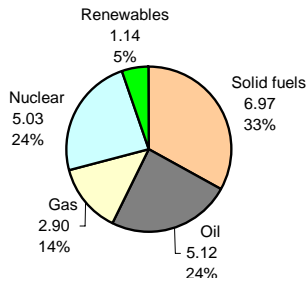


BE, CO2 INDICATORS

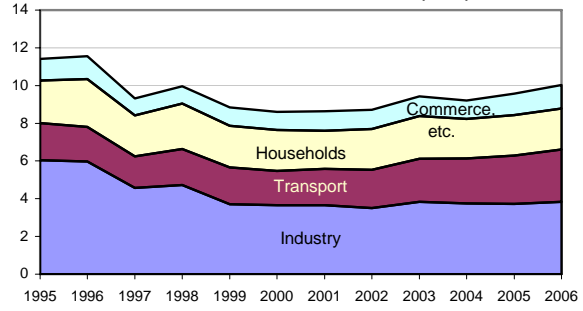


Bulgaria

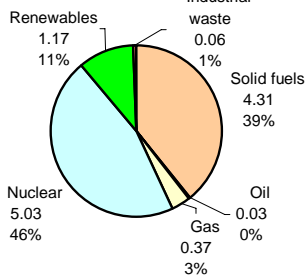
BG, GROSS INLAND CONSUMPTION (ENERGY MIX in Mtoe, %) (2006)



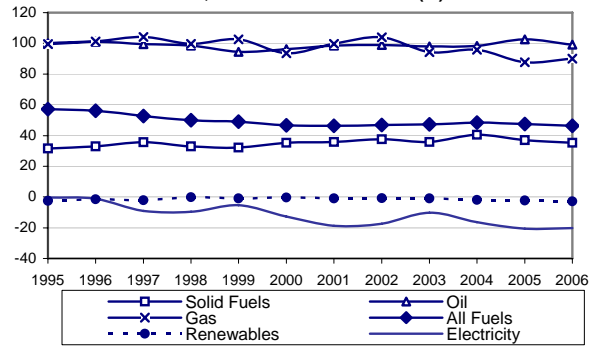
BG, TOTAL FINAL CONSUMPTION (Mtoe)



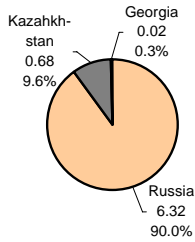
BG, PRIMARY PRODUCTION AND RECOVERED PRODUCTS (in Mtoe, %) (2006)



BG, IMPORT DEPENDENCY (%)



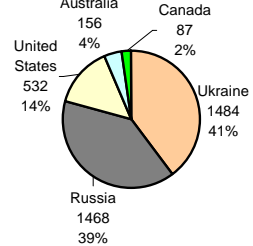
BG, IMPORTS OF CRUDE OIL (Mio tonnes, %) (2006)



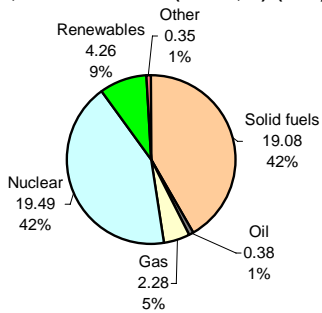
BG, IMPORTS OF NATURAL GAS (TJ, %) (2006)



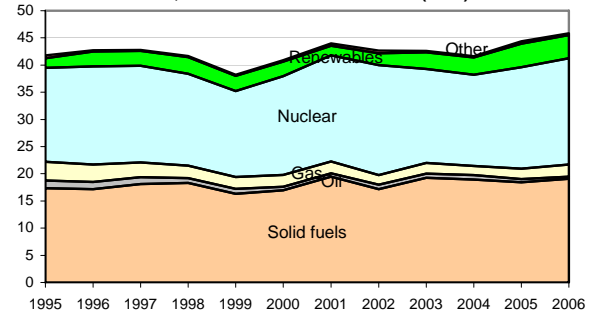
BG, IMPORTS OF HARD COAL (1000T, %) (2006)



BG, ELECTRICITY MIX (in TWh, %) (2006)

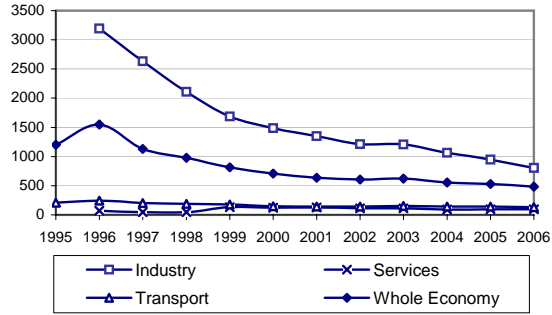


BG, ELECTRICITY GENERATION (TWh)

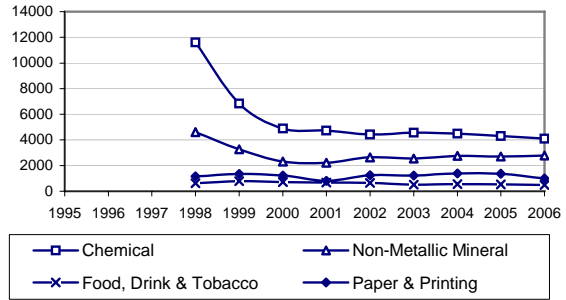


Bulgaria

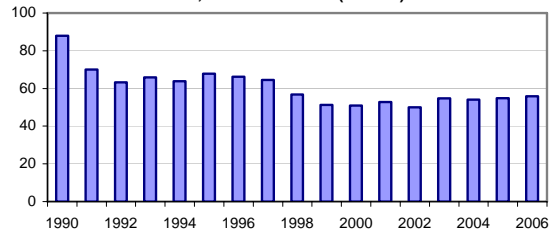
BG, FINAL ENERGY INTENSITY (toe/Meuro)



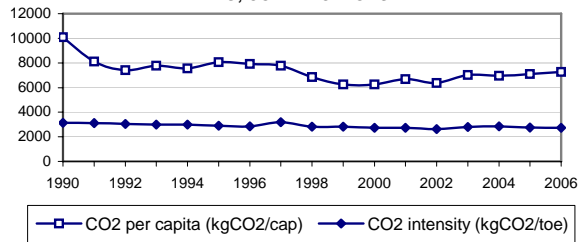
BG, FINAL ENERGY INTENSITY FOR SELECTED INDUSTRIAL SECTORS (toe/Meuro)



BG, CO2 EMISSIONS (Mt CO2)

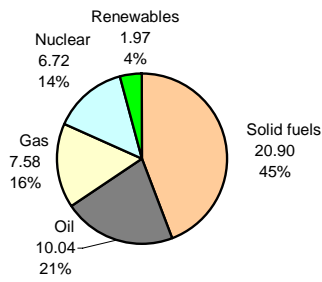


BG, CO2 INDICATORS

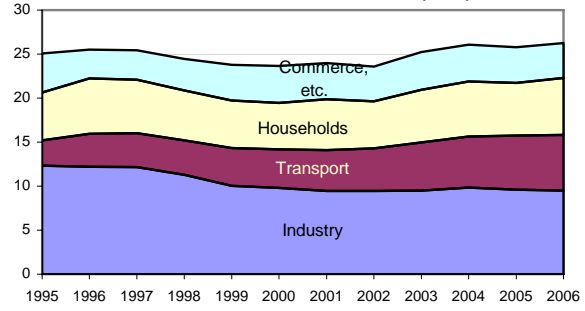


Czech Republic

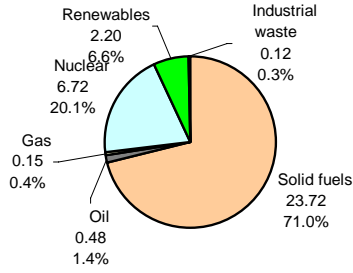
CZ, GROSS INLAND CONSUMPTION (ENERGY MIX in Mtoe, %) (2006)



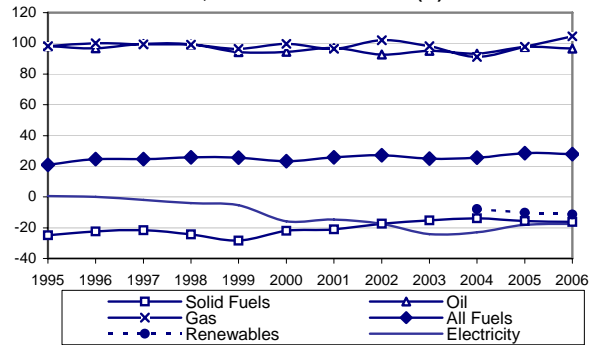
CZ, TOTAL FINAL CONSUMPTION (Mtoe)



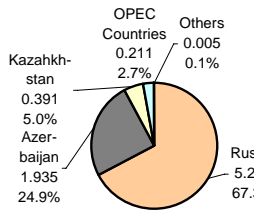
CZ, PRIMARY PRODUCTION AND RECOVERED PRODUCTS (in Mtoe, %) (2006)



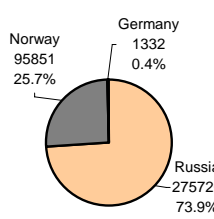
CZ, IMPORT DEPENDENCY (%)



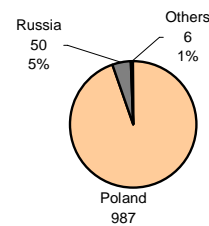
CZ, IMPORTS OF CRUDE OIL (Mio tonnes, %) (2006)



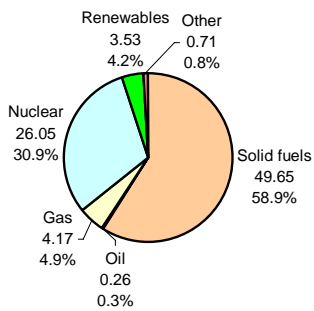
CZ, IMPORTS OF NATURAL GAS (TJ, %) (2006)



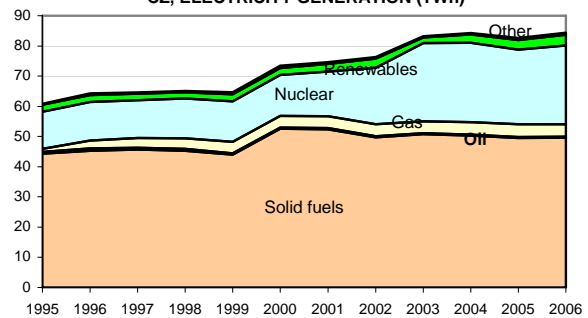
CZ, IMPORTS OF HARD COAL (1000T, %) (2006)



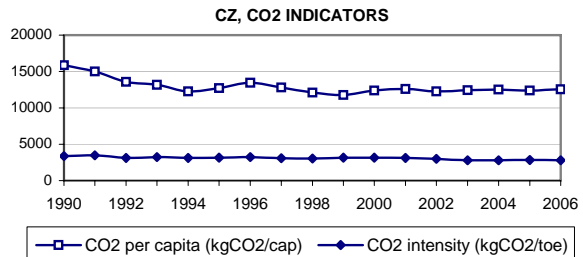
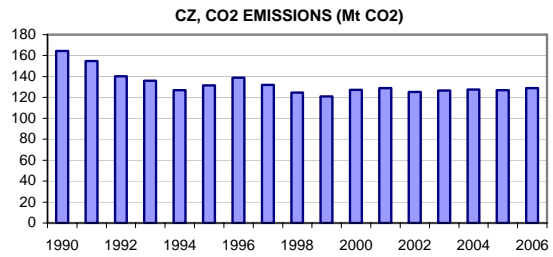
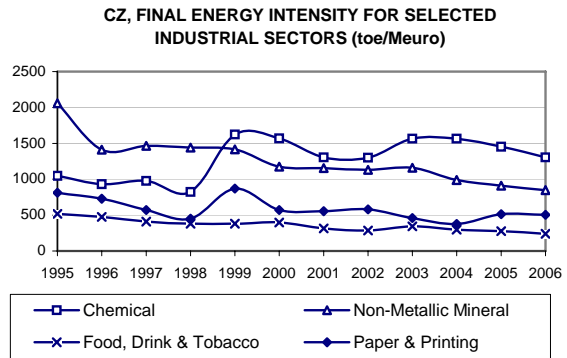
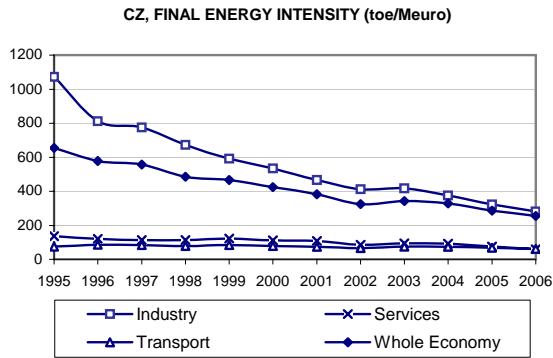
CZ, ELECTRICITY MIX (in TWh, %) (2006)



CZ, ELECTRICITY GENERATION (TWh)

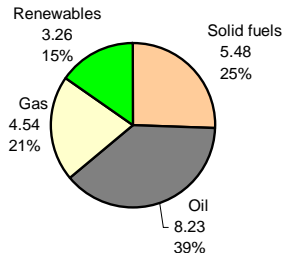


Czech Republic

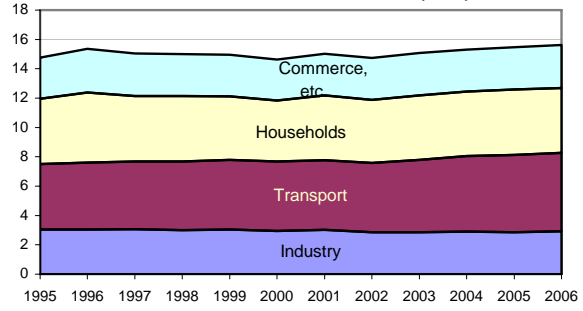


Denmark

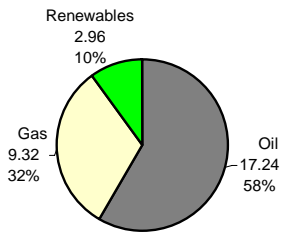
DK, GROSS INLAND CONSUMPTION (ENERGY MIX in Mtoe, %) (2006)



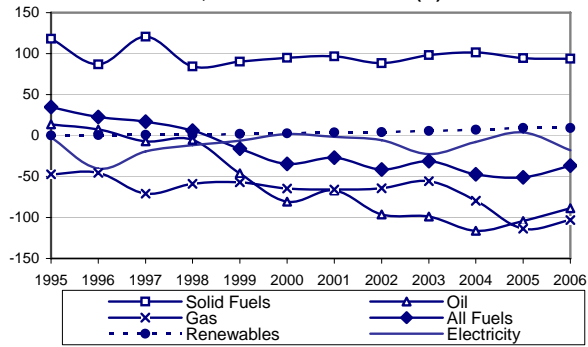
DK, TOTAL FINAL CONSUMPTION (Mtoe)



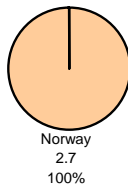
DK, PRIMARY PRODUCTION AND RECOVERED PRODUCTS (in Mtoe, %) (2006)



DK, IMPORT DEPENDENCY (%)



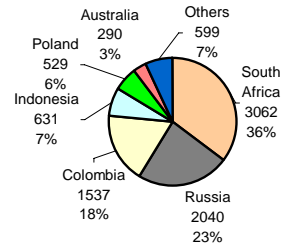
DK, IMPORTS OF CRUDE OIL (Mio tonnes, %) (2006)



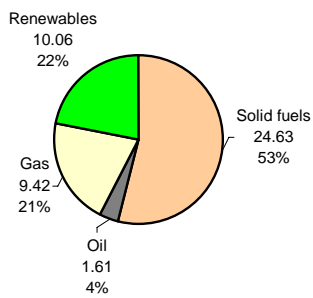
DK, IMPORTS OF NATURAL GAS
No Imports



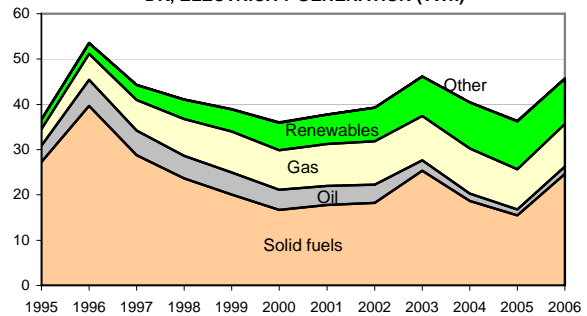
DK, IMPORTS OF HARD COAL (1000T, %) (2006)



DK, ELECTRICITY MIX (in TWh, %) (2006)

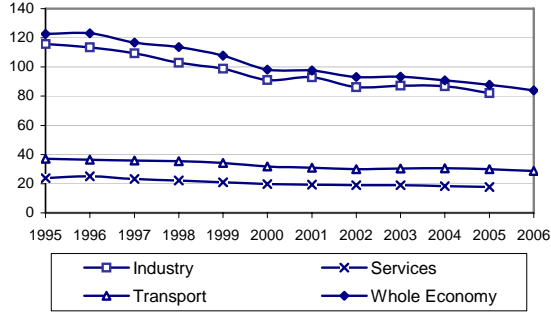


DK, ELECTRICITY GENERATION (TWh)

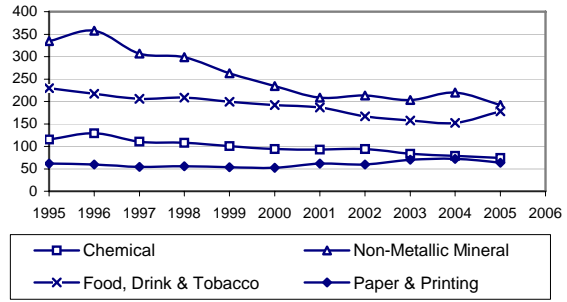


Denmark

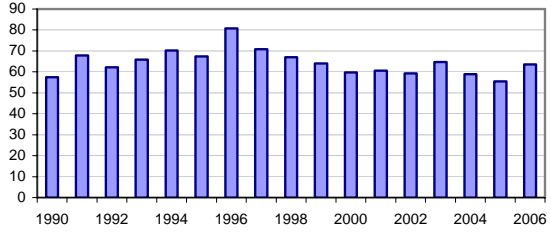
DK, FINAL ENERGY INTENSITY (toe/Meuro)



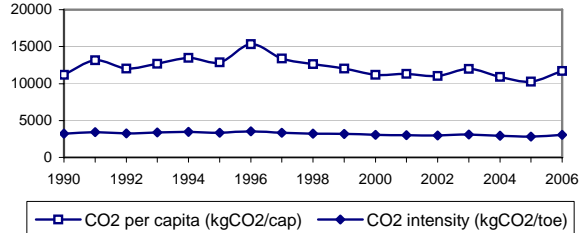
DK, FINAL ENERGY INTENSITY FOR SELECTED INDUSTRIAL SECTORS (toe/Meuro)



DK, CO2 EMISSIONS (Mt CO2)

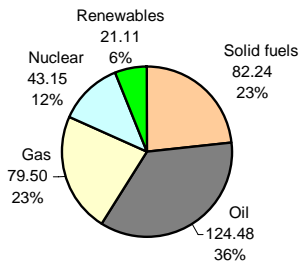


DK, CO2 INDICATORS

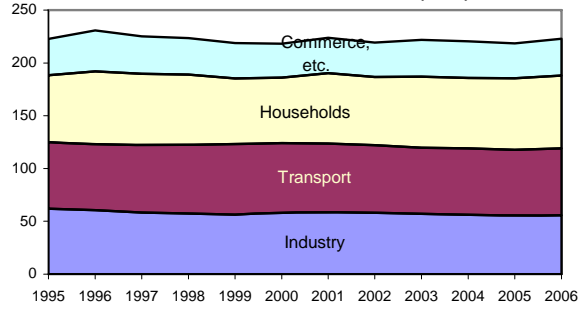


Germany

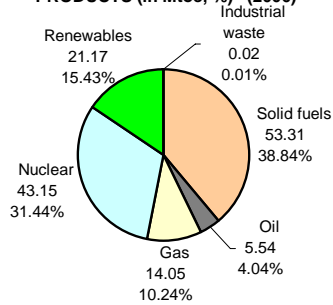
DE, GROSS INLAND CONSUMPTION (ENERGY MIX in Mtoe, %) (2006)



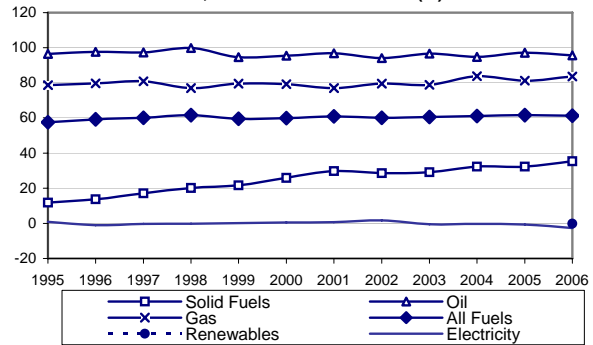
DE, TOTAL FINAL CONSUMPTION (Mtoe)



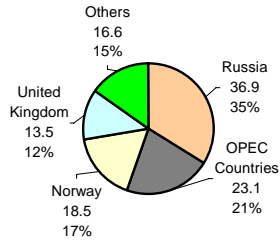
DE, PRIMARY PRODUCTION AND RECOVERED PRODUCTS (in Mtoe, %) (2006)



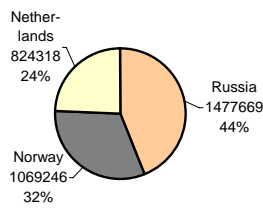
DE, IMPORT DEPENDENCY (%)



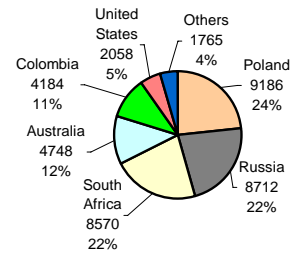
DE, IMPORTS OF CRUDE OIL (Mio tonnes, %) (2006)



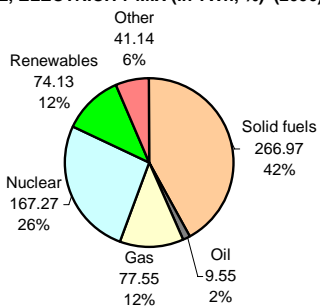
DE, IMPORTS OF NATURAL GAS (TJ, %) (2006)



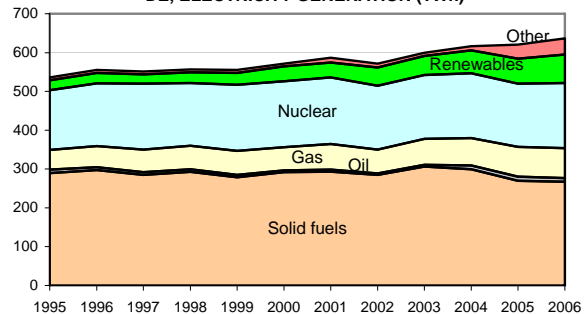
DE, IMPORTS OF HARD COAL (1000T, %) (2006)



DE, ELECTRICITY MIX (in TWh, %) (2006)

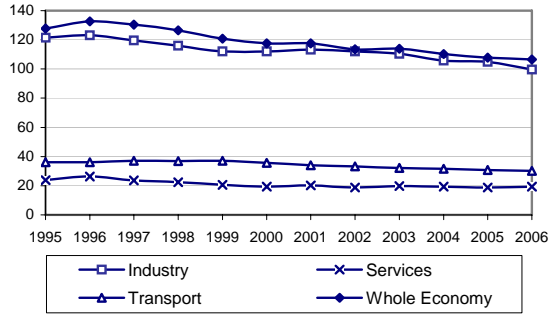


DE, ELECTRICITY GENERATION (TWh)

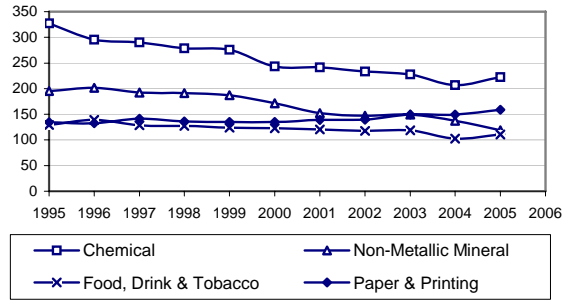


Germany

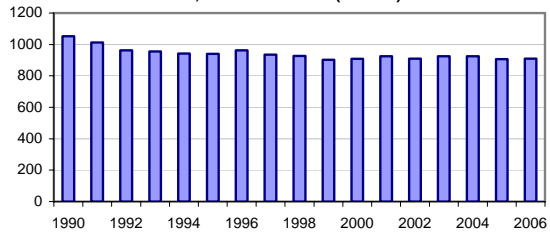
DE, FINAL ENERGY INTENSITY (toe/Meuro)



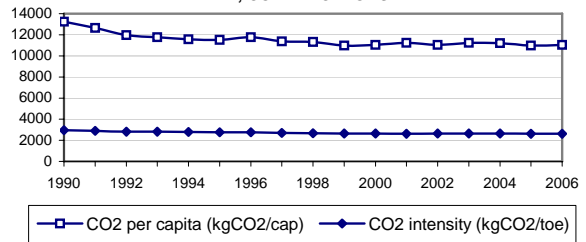
DE, FINAL ENERGY INTENSITY FOR SELECTED INDUSTRIAL SECTORS (toe/Meuro)



DE, CO2 EMISSIONS (Mt CO2)

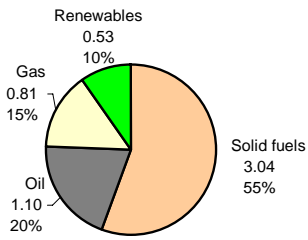


DE, CO2 INDICATORS

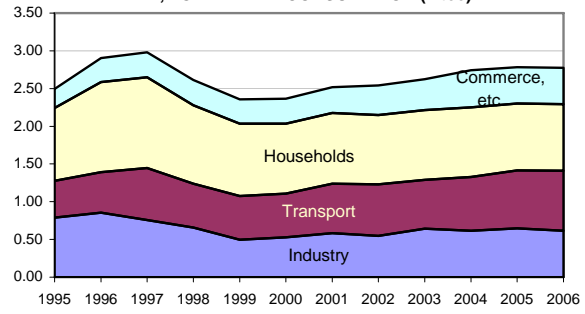


Estonia

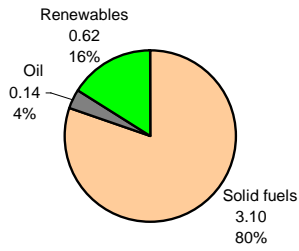
EE, GROSS INLAND CONSUMPTION (ENERGY MIX in Mtoe, %) (2006)



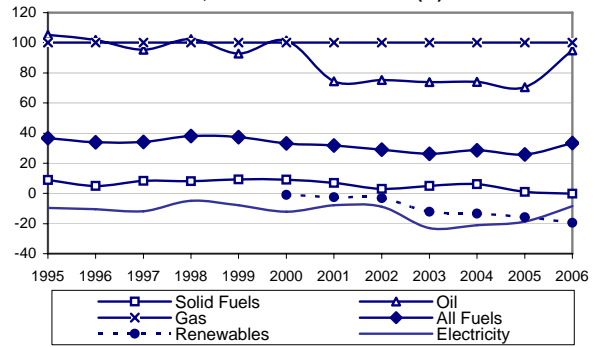
EE, TOTAL FINAL CONSUMPTION (Mtoe)



EE, PRIMARY PRODUCTION AND RECOVERED PRODUCTS (in Mtoe, %) (2006)



EE, IMPORT DEPENDENCY (%)



EE, IMPORTS OF CRUDE OIL
No data available



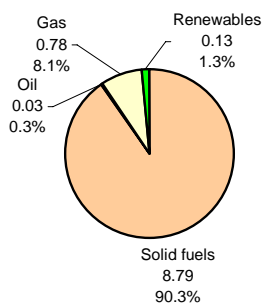
EE, IMPORTS OF NATURAL GAS (TJ, %) (2006)



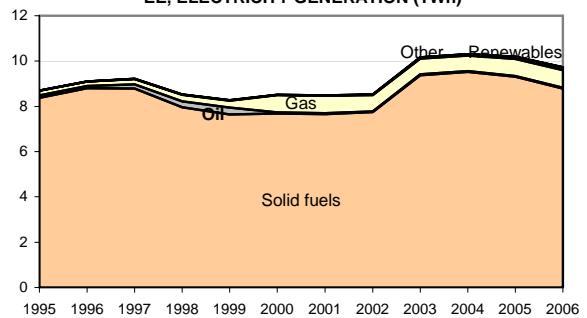
EE, IMPORTS OF HARD COAL (1000T, %) (2006)



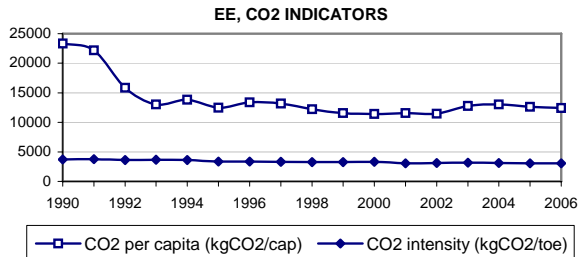
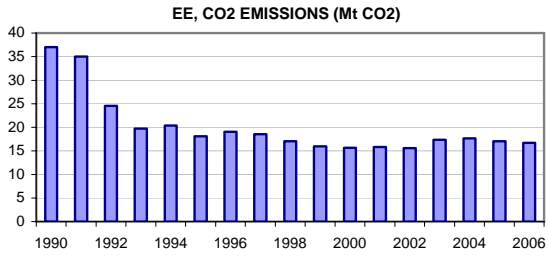
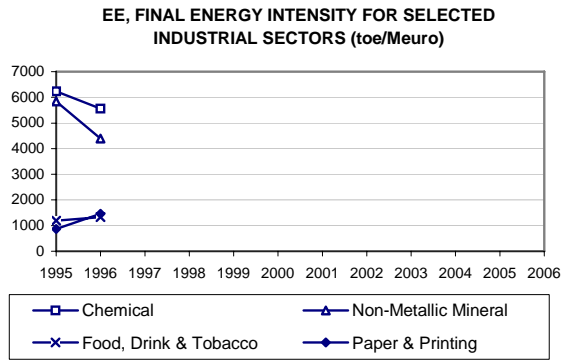
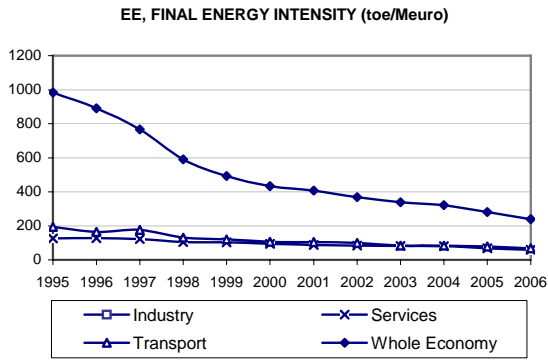
EE, ELECTRICITY MIX (in TWh, %) (2006)



EE, ELECTRICITY GENERATION (TWh)

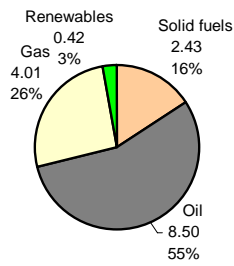


Estonia

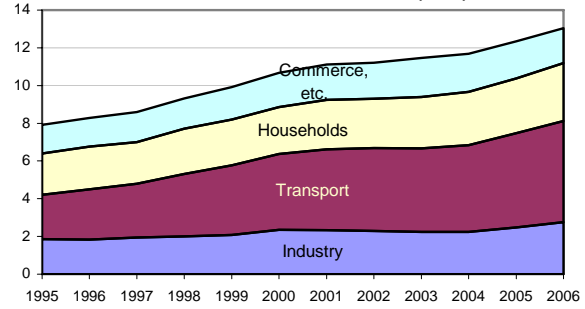


Ireland

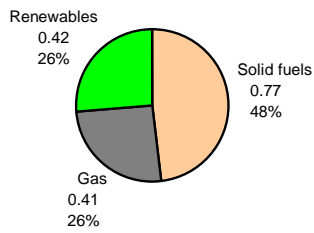
IE, GROSS INLAND CONSUMPTION (ENERGY MIX in Mtoe, %) (2006)



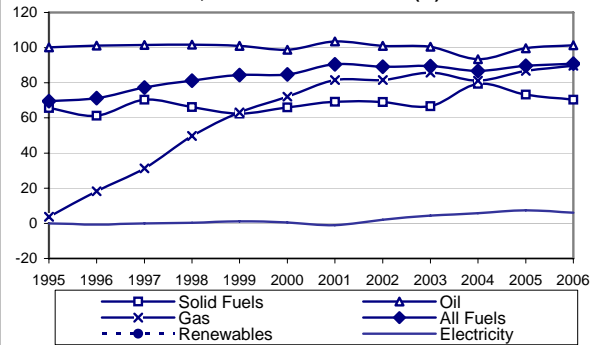
IE, TOTAL FINAL CONSUMPTION (Mtoe)



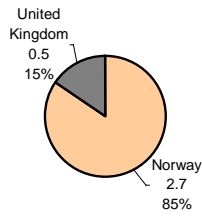
IE, PRIMARY PRODUCTION AND RECOVERED PRODUCTS (in Mtoe, %) (2006)



IE, IMPORT DEPENDENCY (%)



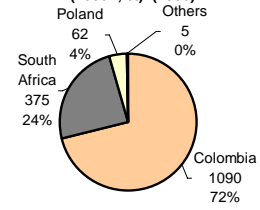
IE, IMPORTS OF CRUDE OIL (Mio tonnes, %) (2006)



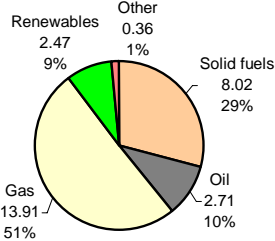
IE, IMPORTS OF NATURAL GAS (TJ, %) (2006)



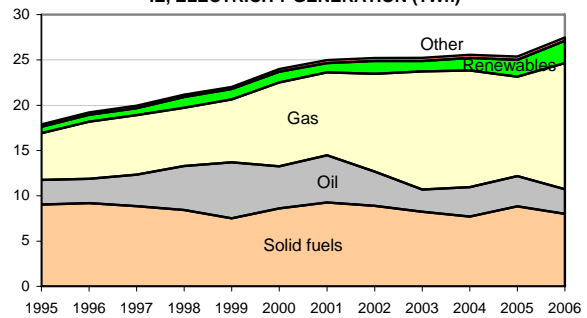
IE, IMPORTS OF HARD COAL (1000T, %) (2006)



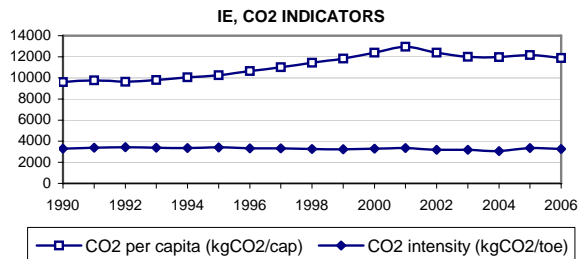
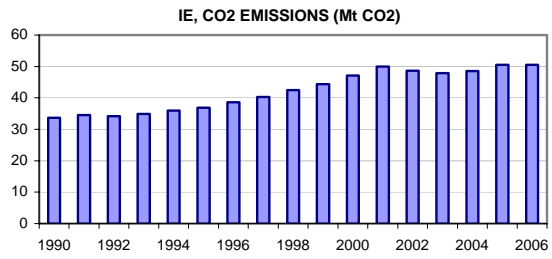
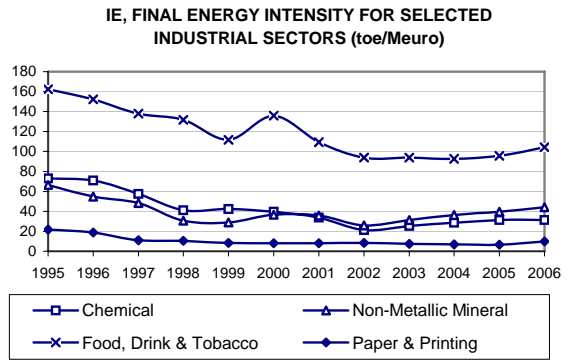
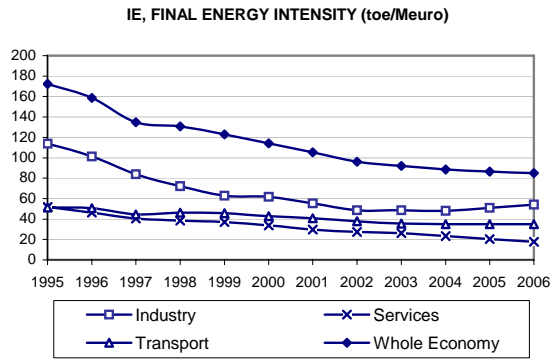
IE, ELECTRICITY MIX (in TWh, %) (2006)



IE, ELECTRICITY GENERATION (TWh)

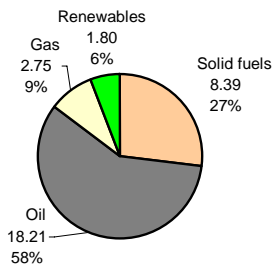


Ireland

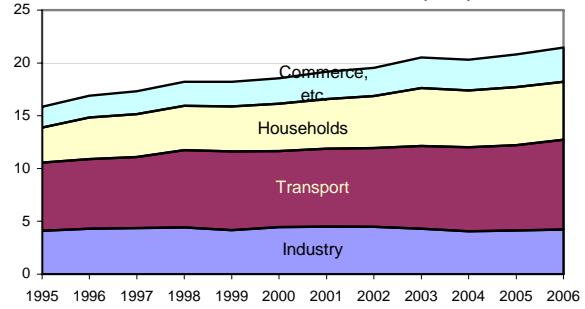


Greece

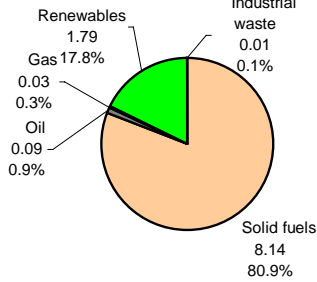
GR, GROSS INLAND CONSUMPTION (ENERGY MIX in Mtoe, %) (2006)



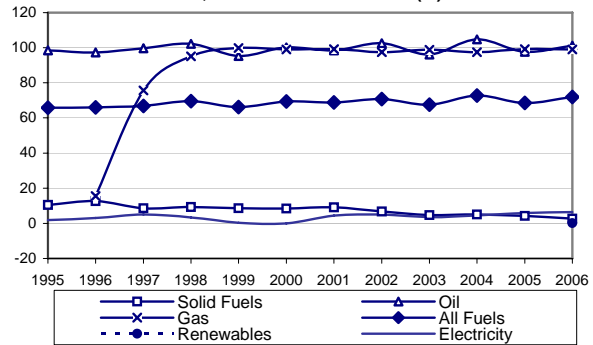
GR, TOTAL FINAL CONSUMPTION (Mtoe)



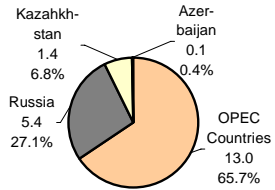
GR, PRIMARY PRODUCTION AND RECOVERED PRODUCTS (in Mtoe, %) (2006)



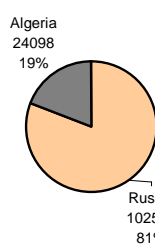
EL, IMPORT DEPENDENCY (%)



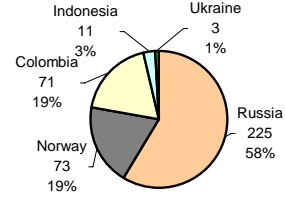
GR, IMPORTS OF CRUDE OIL (Mio tonnes, %) (2006)



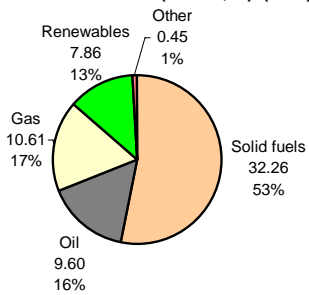
GR, IMPORTS OF NATURAL GAS (TJ, %) (2006)



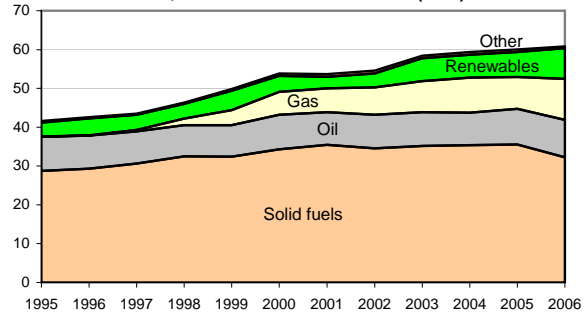
GR, IMPORTS OF HARD COAL (1000T, %) (2006)



GR, ELECTRICITY MIX (in TWh, %) (2006)

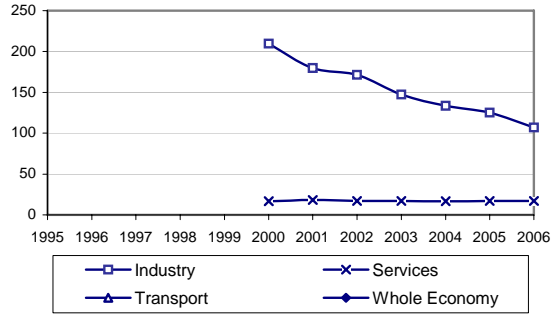


GR, ELECTRICITY GENERATION (TWh)

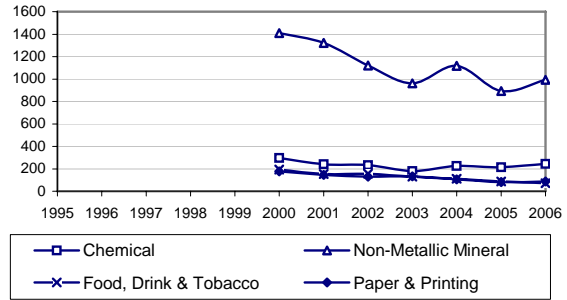


Greece

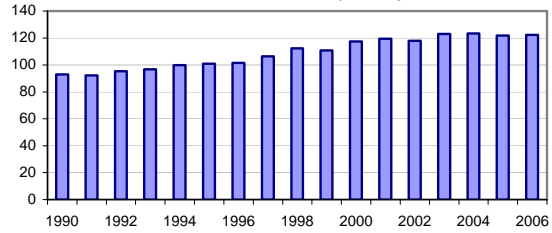
EL, FINAL ENERGY INTENSITY (toe/Meuro)



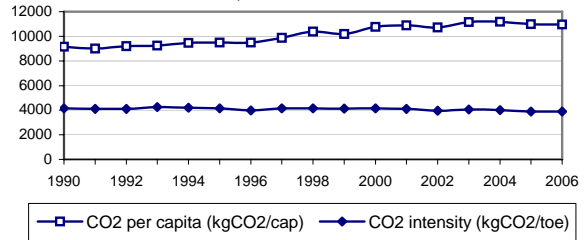
EL, FINAL ENERGY INTENSITY FOR SELECTED INDUSTRIAL SECTORS (toe/Meuro)



EL, CO2 EMISSIONS (Mt CO2)

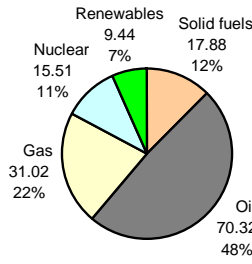


EL, CO2 INDICATORS

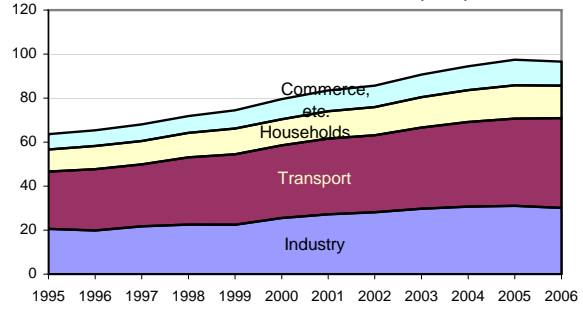


Spain

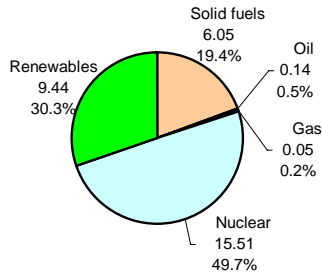
ES, GROSS INLAND CONSUMPTION (ENERGY MIX in Mtoe, %) (2006)



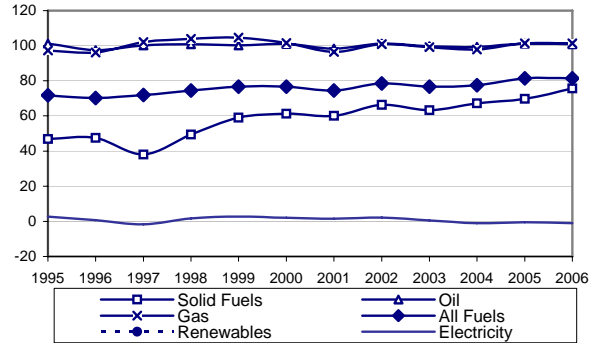
ES, TOTAL FINAL CONSUMPTION (Mtoe)



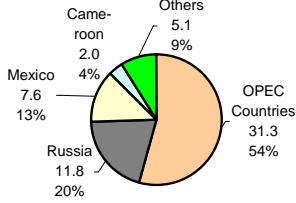
ES, PRIMARY PRODUCTION AND RECOVERED PRODUCTS (in Mtoe, %) (2006)



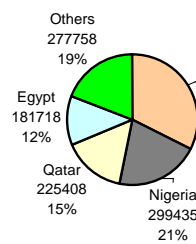
ES, IMPORT DEPENDENCY (%)



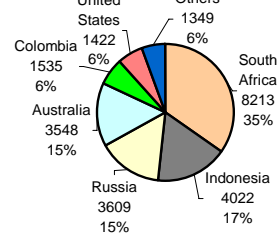
ES, IMPORTS OF CRUDE OIL (Mio tonnes, %) (2006)



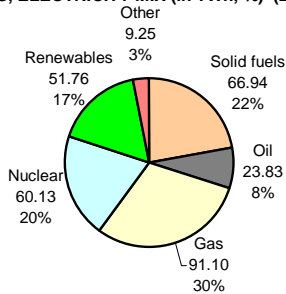
ES, IMPORTS OF NATURAL GAS (TJ, %) (2006)



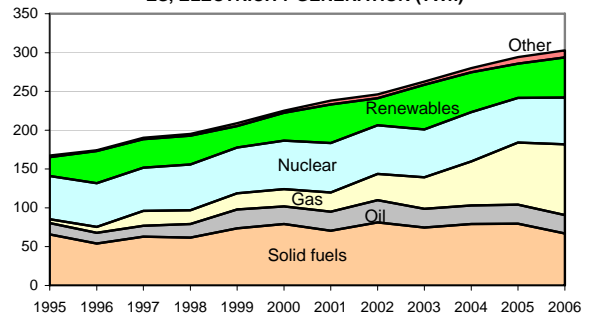
ES, IMPORTS OF HARD COAL (1000T, %) (2006)



ES, ELECTRICITY MIX (in TWh, %) (2006)

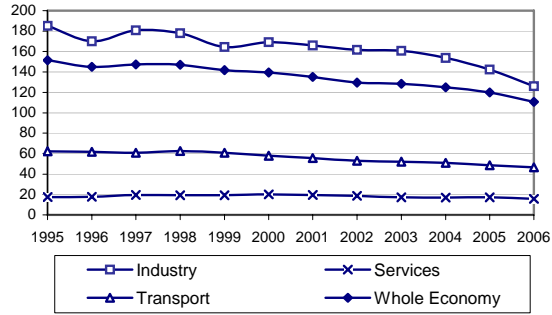


ES, ELECTRICITY GENERATION (TWh)

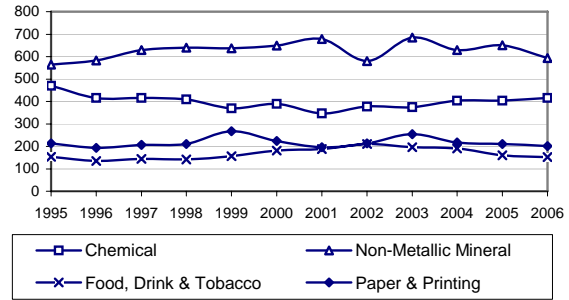


Spain

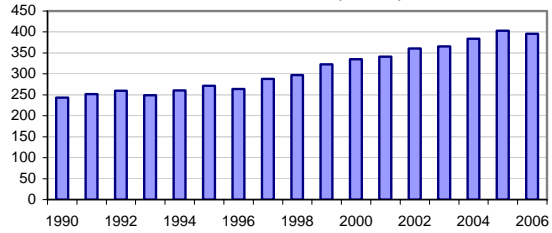
ES, FINAL ENERGY INTENSITY (toe/Meuro)



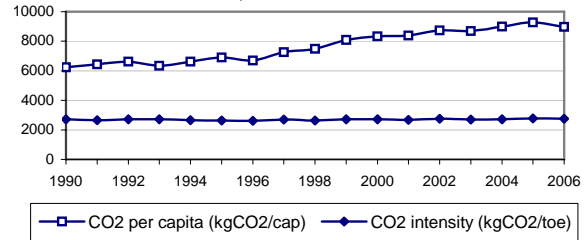
ES, FINAL ENERGY INTENSITY FOR SELECTED INDUSTRIAL SECTORS (toe/Meuro)



ES, CO2 EMISSIONS (Mt CO2)

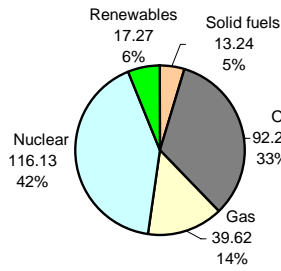


ES, CO2 INDICATORS

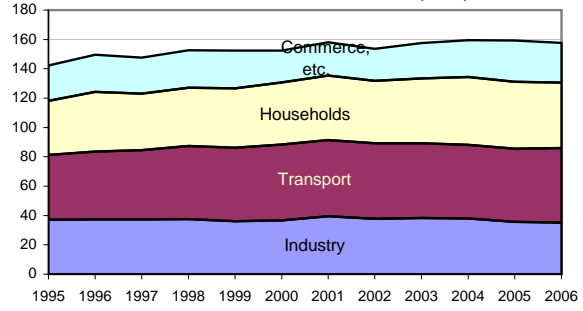


France

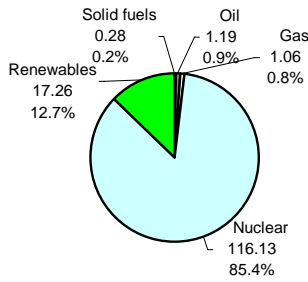
FR, GROSS INLAND CONSUMPTION (ENERGY MIX in Mtoe, %) (2006)



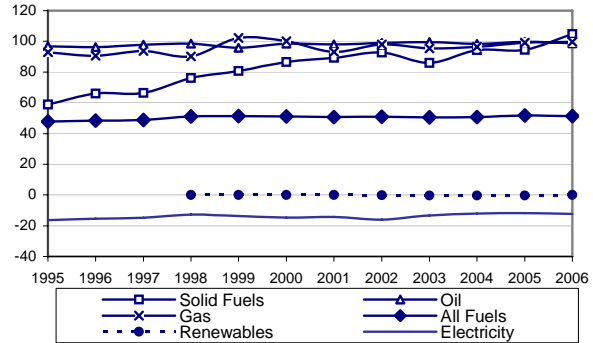
FR, TOTAL FINAL CONSUMPTION (Mtoe)



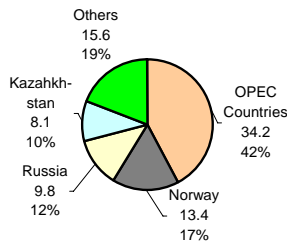
FR, PRIMARY PRODUCTION AND RECOVERED PRODUCTS (in Mtoe, %) (2006)



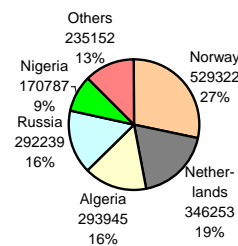
FR, IMPORT DEPENDENCY (%)



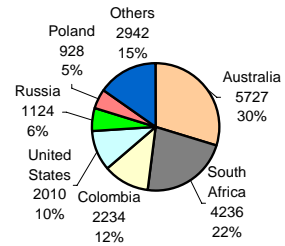
FR, IMPORTS OF CRUDE OIL (Mio tonnes, %) (2006)



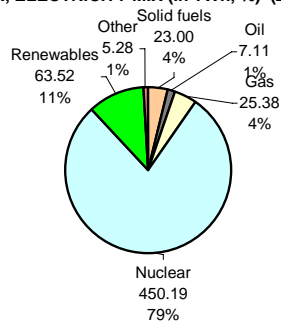
FR, IMPORTS OF NATURAL GAS (TJ, %) (2006)



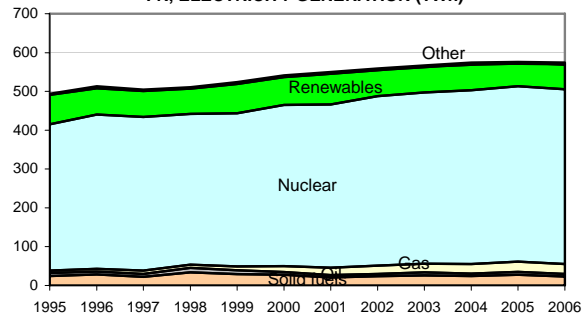
FR, IMPORTS OF HARD COAL (1000T, %) (2006)



FR, ELECTRICITY MIX (in TWh, %) (2006)

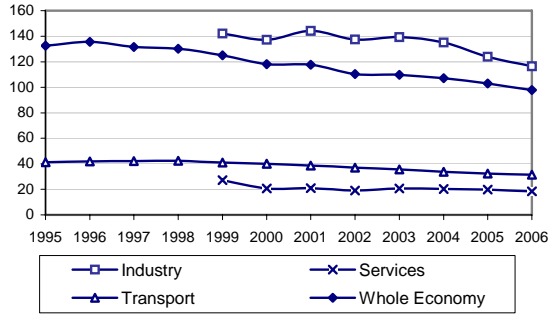


FR, ELECTRICITY GENERATION (TWh)

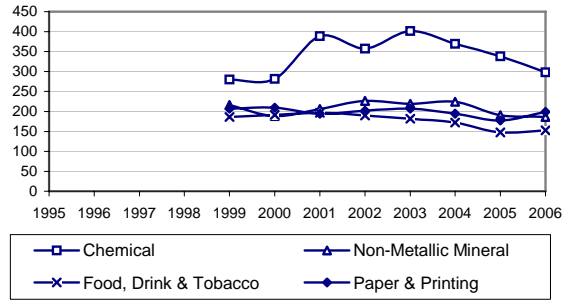


France

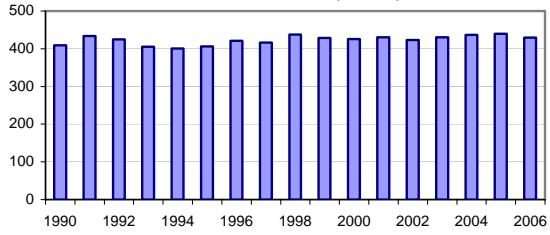
FR, FINAL ENERGY INTENSITY (toe/Meuro)



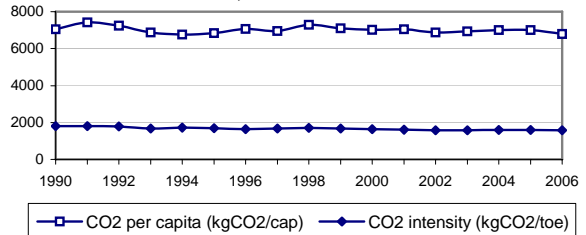
FR, FINAL ENERGY INTENSITY FOR SELECTED INDUSTRIAL SECTORS (toe/Meuro)



FR, CO2 EMISSIONS (Mt CO2)

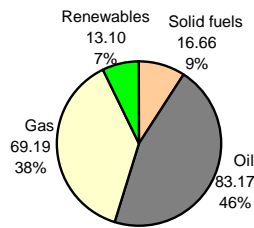


FR, CO2 INDICATORS

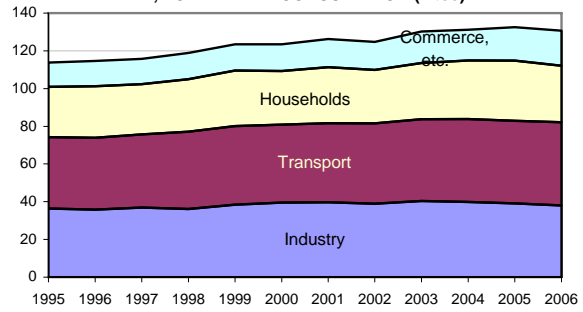


Italy

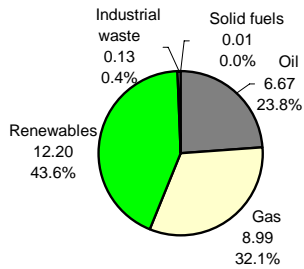
IT, GROSS INLAND CONSUMPTION (ENERGY MIX in Mtoe, %) (2006)



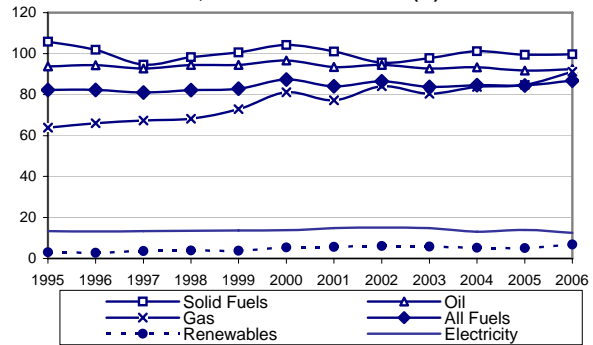
IT, TOTAL FINAL CONSUMPTION (Mtoe)



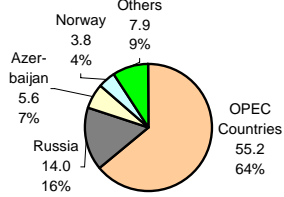
IT, PRIMARY PRODUCTION AND RECOVERED PRODUCTS (in Mtoe, %) (2006)



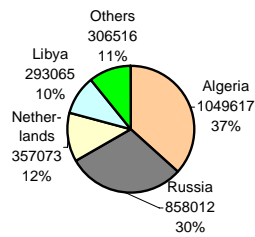
IT, IMPORT DEPENDENCY (%)



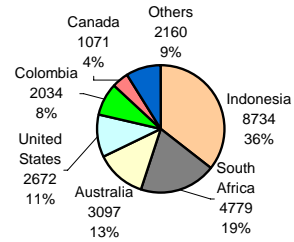
IT, IMPORTS OF CRUDE OIL (Mio tonnes, %) (2006)



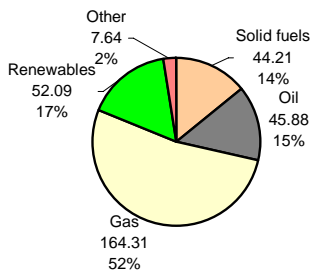
IT, IMPORTS OF NATURAL GAS (TJ, %) (2006)



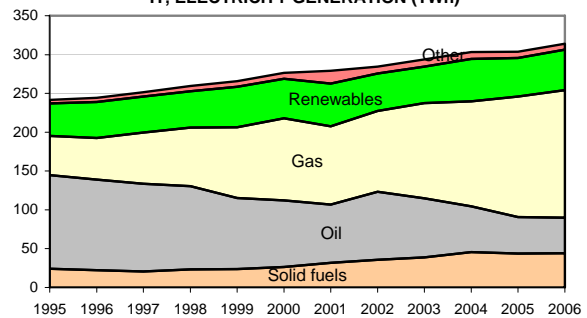
IT, IMPORTS OF HARD COAL (1000T, %) (2006)



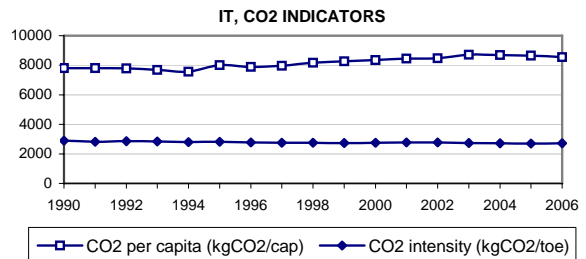
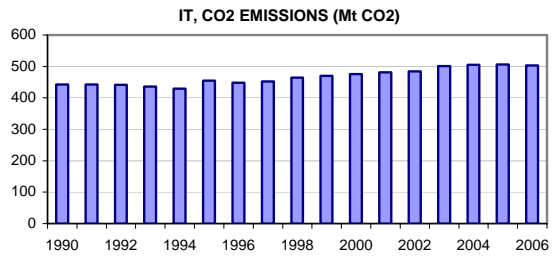
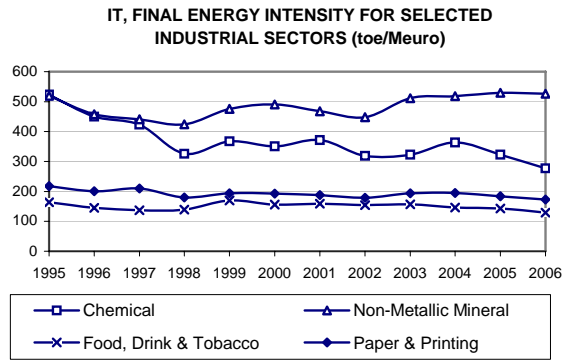
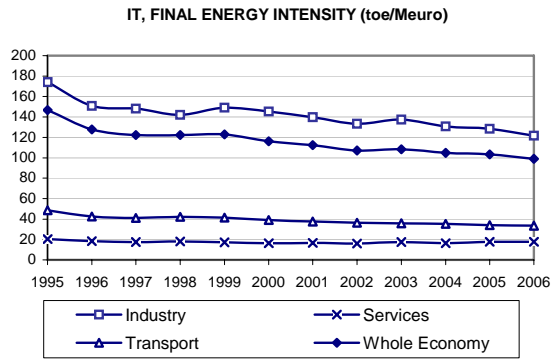
IT, ELECTRICITY MIX (in TWh, %) (2006)



IT, ELECTRICITY GENERATION (TWh)

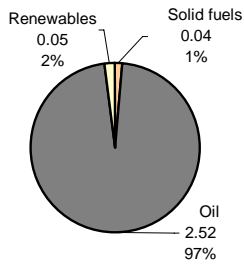


Italy

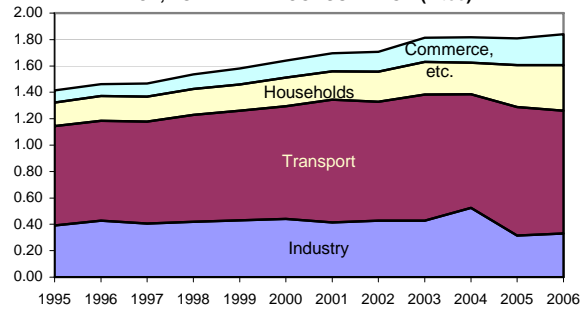


Cyprus

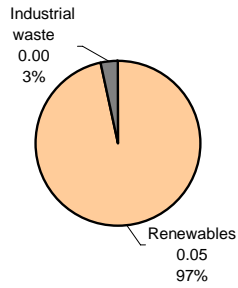
CY, GROSS INLAND CONSUMPTION (ENERGY MIX in Mtoe, %) (2006)



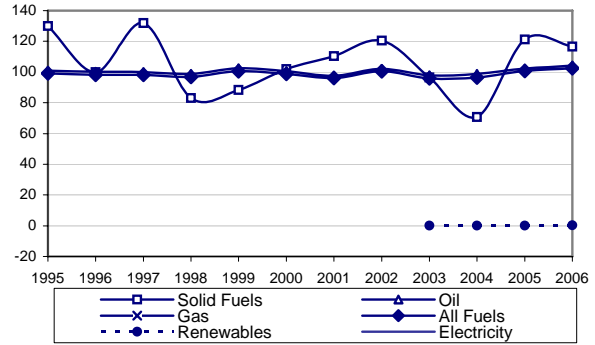
CY, TOTAL FINAL CONSUMPTION (Mtoe)



CY, PRIMARY PRODUCTION AND RECOVERED PRODUCTS (in Mtoe, %) (2006)



CY, IMPORT DEPENDENCY (%)



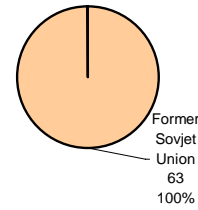
CY, IMPORTS OF CRUDE OIL
No Imports



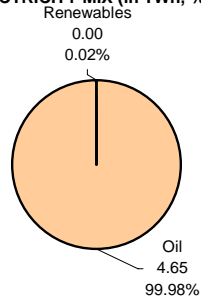
CY, IMPORTS OF NATURAL GAS
No Imports



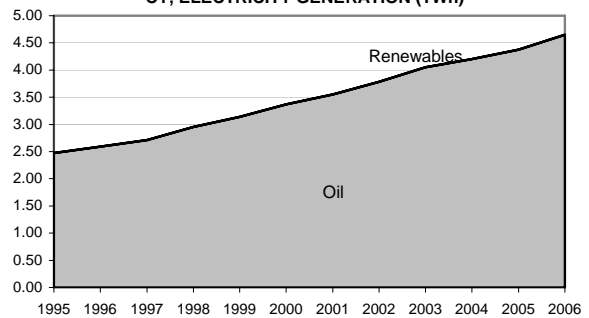
CY, IMPORTS OF HARD COAL (1000T, %) (2006)



CY, ELECTRICITY MIX (in TWh, %) (2006)

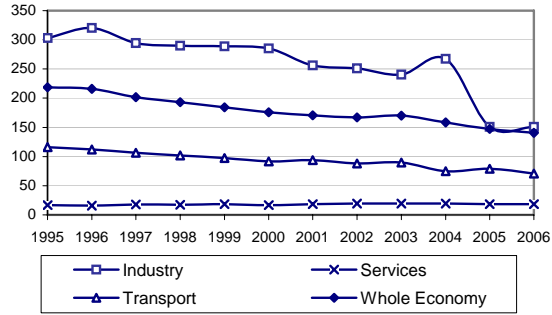


CY, ELECTRICITY GENERATION (TWh)

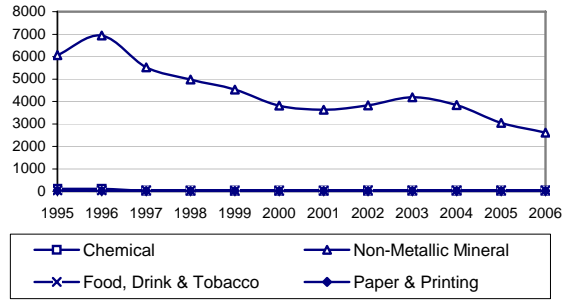


Cyprus

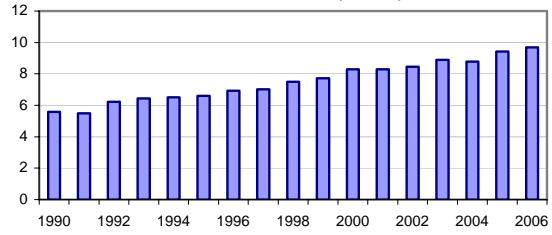
CY, FINAL ENERGY INTENSITY (toe/Meuro)



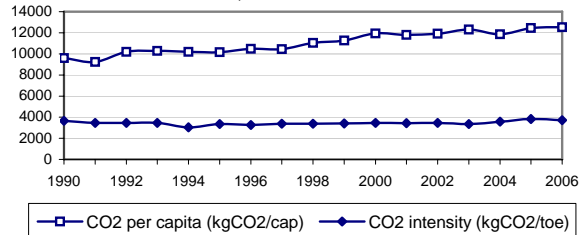
CY, FINAL ENERGY INTENSITY FOR SELECTED INDUSTRIAL SECTORS (toe/Meuro)



CY, CO2 EMISSIONS (Mt CO2)

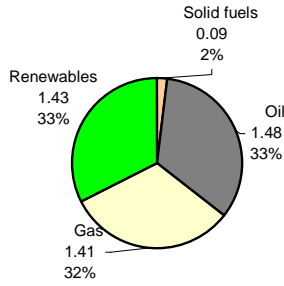


CY, CO2 INDICATORS

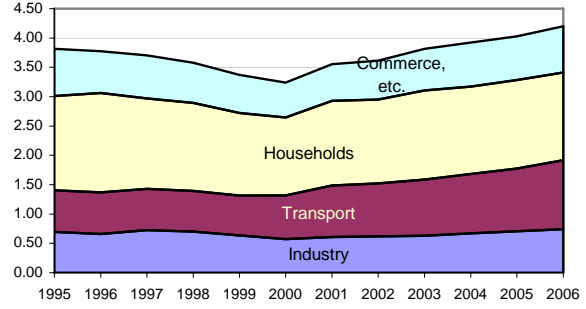


Latvia

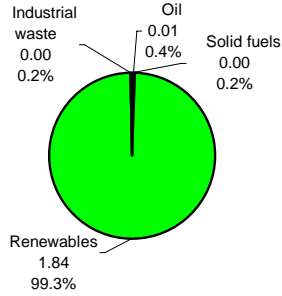
LV, GROSS INLAND CONSUMPTION (ENERGY MIX in Mtoe, %) (2006)



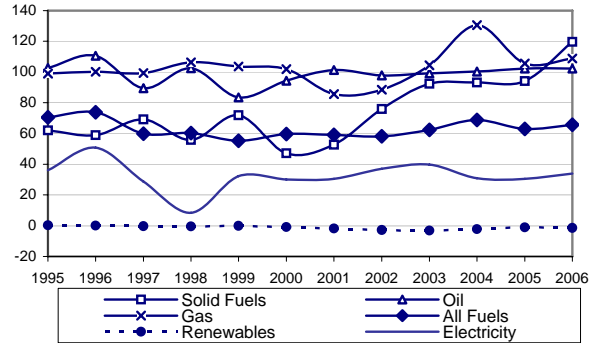
LV, TOTAL FINAL CONSUMPTION (Mtoe)



LV, PRIMARY PRODUCTION AND RECOVERED PRODUCTS (in Mtoe, %) (2006)



LV, IMPORT DEPENDENCY (%)



LV, IMPORTS OF CRUDE OIL
No data available



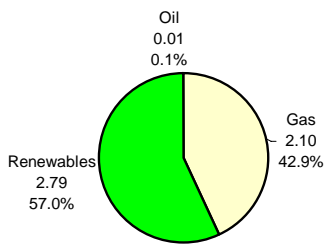
LV, IMPORTS OF NATURAL GAS
(TJ, %) (2006)



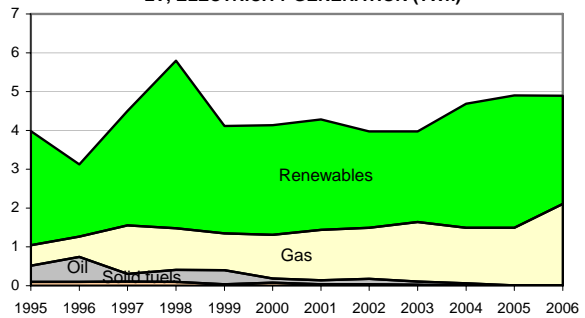
LV, IMPORTS OF HARD COAL
(1000T, %) (2006)



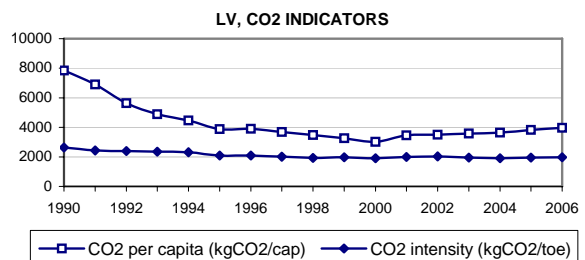
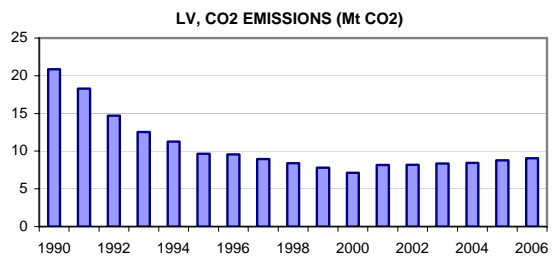
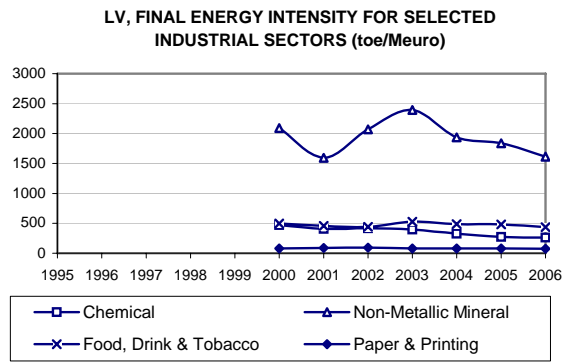
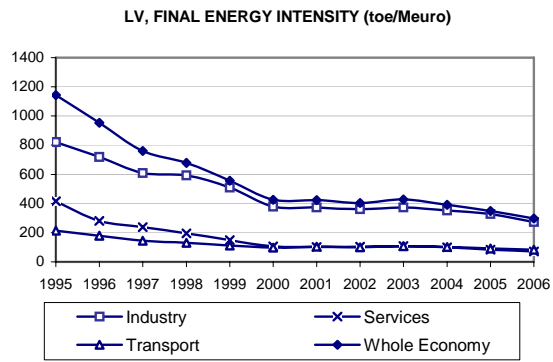
LV, ELECTRICITY MIX (in TWh, %) (2006)



LV, ELECTRICITY GENERATION (TWh)

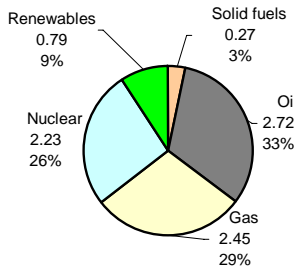


Latvia

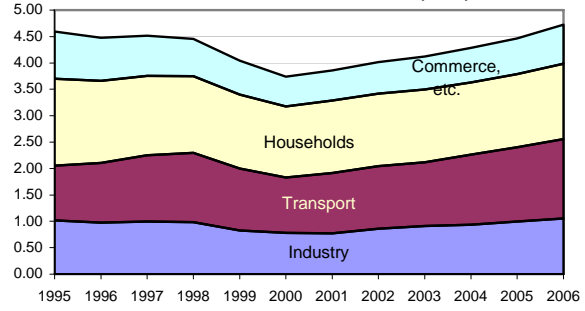


Lithuania

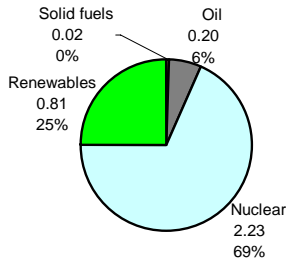
LT, GROSS INLAND CONSUMPTION (ENERGY MIX in Mtoe, %) (2006)



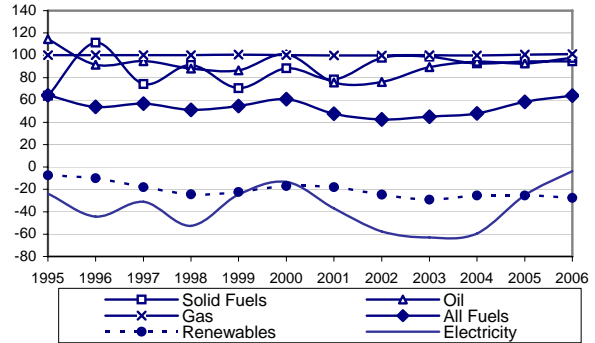
LT, TOTAL FINAL CONSUMPTION (Mtoe)



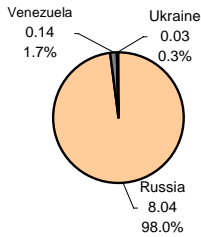
LT, PRIMARY PRODUCTION AND RECOVERED PRODUCTS (in Mtoe, %) (2006)



LT, IMPORT DEPENDENCY (%)



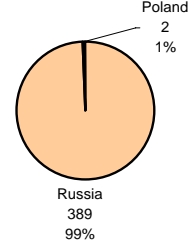
LT, IMPORTS OF CRUDE OIL (Mio tonnes, %) (2006)



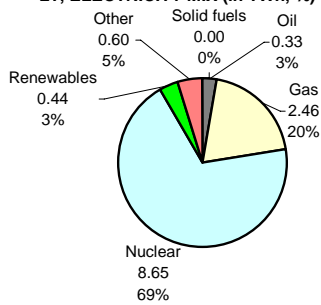
LT, IMPORTS OF NATURAL GAS (TJ, %) (2006)



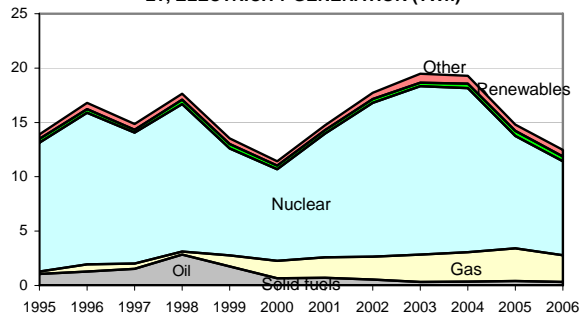
LT, IMPORTS OF HARD COAL (1000T, %) (2006)



LT, ELECTRICITY MIX (in TWh, %) (2006)

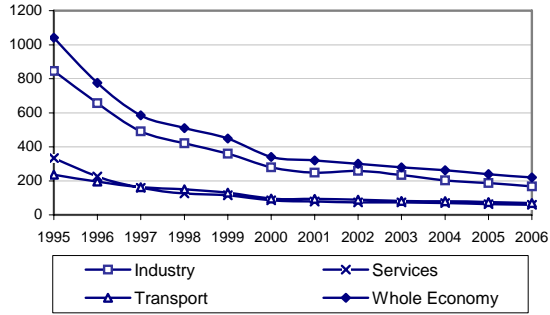


LT, ELECTRICITY GENERATION (TWh)

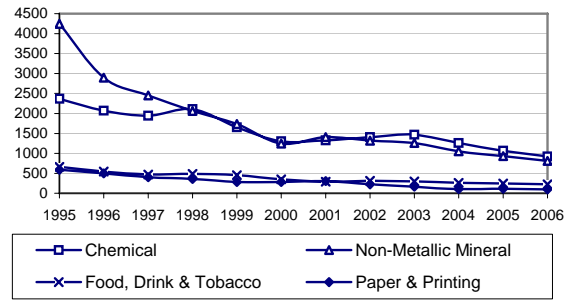


Lithuania

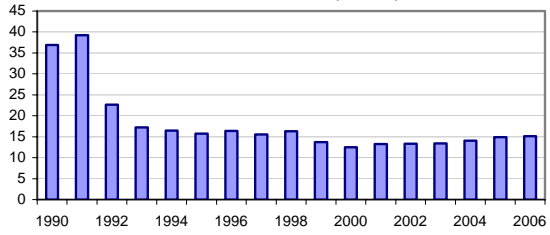
LT, FINAL ENERGY INTENSITY (toe/Meuro)



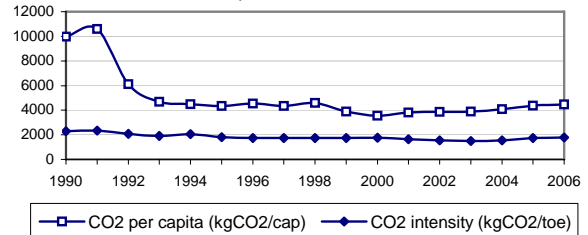
LT, FINAL ENERGY INTENSITY FOR SELECTED INDUSTRIAL SECTORS (toe/Meuro)



LT, CO2 EMISSIONS (Mt CO2)

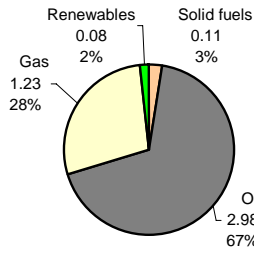


LT, CO2 INDICATORS

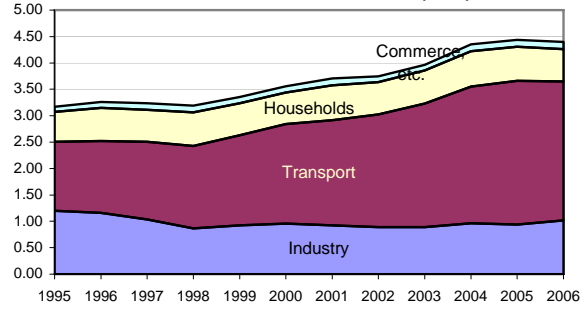


Luxembourg

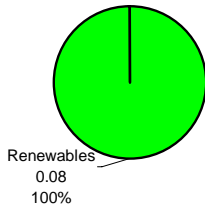
LU, GROSS INLAND CONSUMPTION (ENERGY MIX in Mtoe, %) (2006)



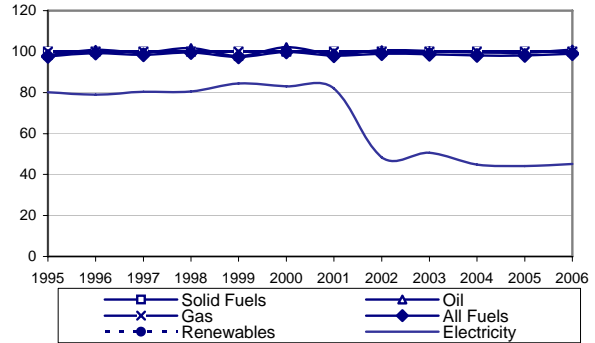
LU, TOTAL FINAL CONSUMPTION (Mtoe)



LU, PRIMARY PRODUCTION AND RECOVERED PRODUCTS (in Mtoe, %) (2006)



LU, IMPORT DEPENDENCY (%)



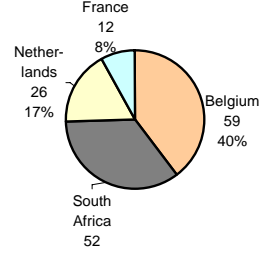
LU, IMPORTS OF CRUDE OIL
No Imports



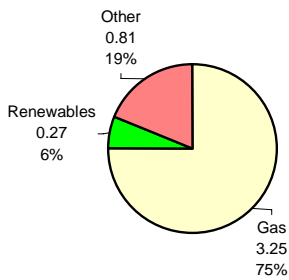
LU, IMPORTS OF NATURAL GAS
No data available



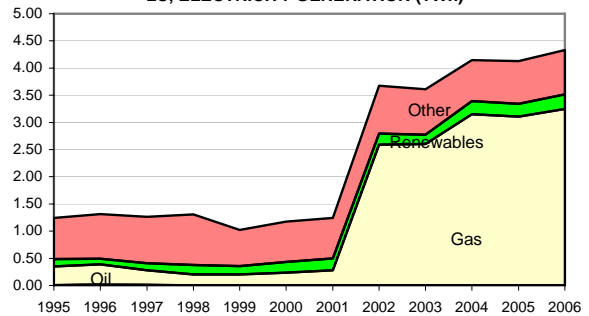
LU, IMPORTS OF HARD COAL (1000T, %) (2006)



LU, ELECTRICITY MIX (in TWh, %) (2006)

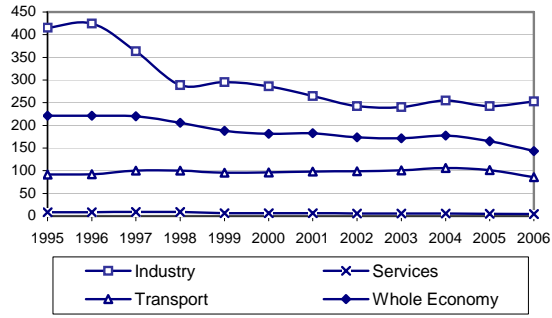


LU, ELECTRICITY GENERATION (TWh)

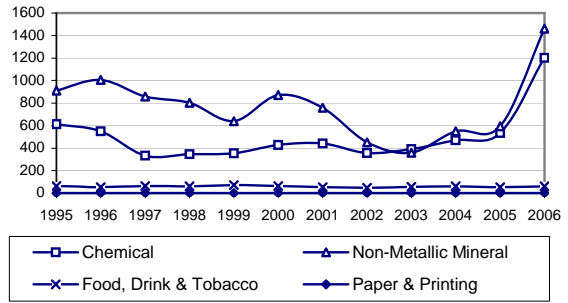


Luxembourg

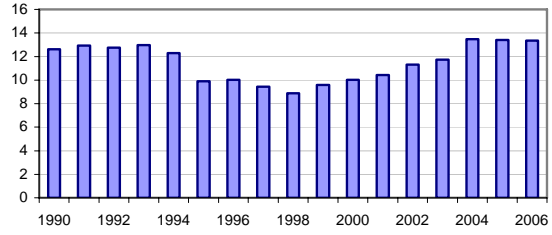
LU, FINAL ENERGY INTENSITY (toe/Meuro)



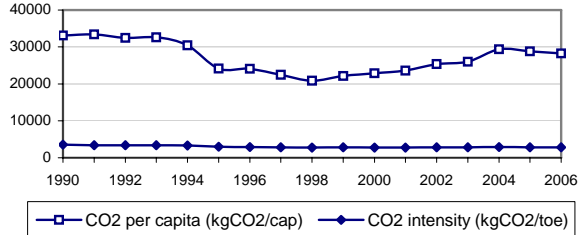
LU, FINAL ENERGY INTENSITY FOR SELECTED INDUSTRIAL SECTORS (toe/Meuro)



LU, CO2 EMISSIONS (Mt CO2)

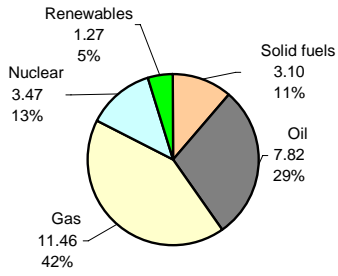


LU, CO2 INDICATORS

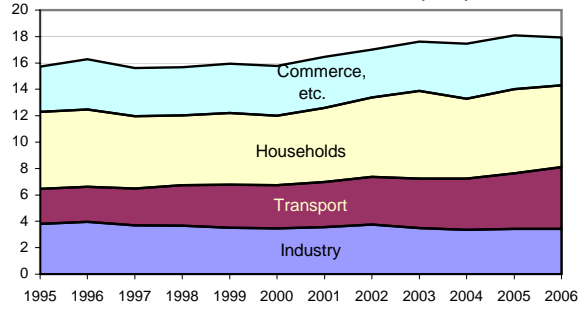


Hungary

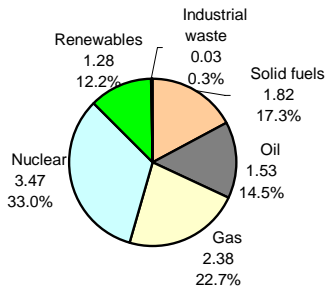
HU, GROSS INLAND CONSUMPTION (ENERGY MIX in Mtoe, %) (2006)



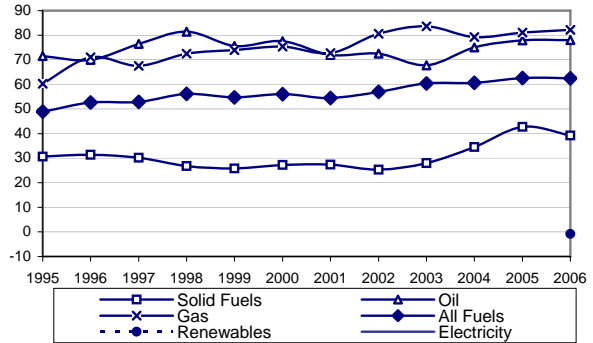
HU, TOTAL FINAL CONSUMPTION (Mtoe)



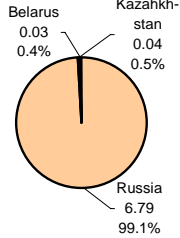
HU, PRIMARY PRODUCTION AND RECOVERED PRODUCTS (in Mtoe, %) (2006)



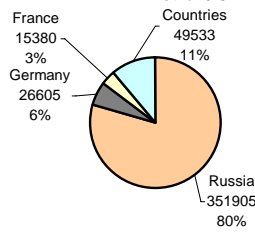
HU, IMPORT DEPENDENCY (%)



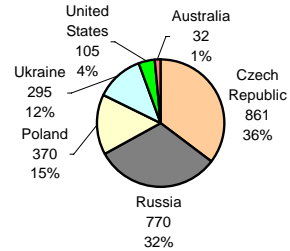
HU, IMPORTS OF CRUDE OIL (Mio tonnes, %) (2006)



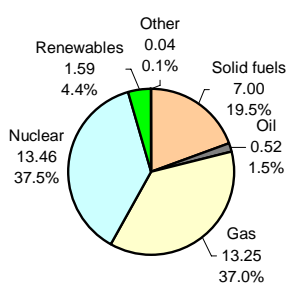
HU, IMPORTS OF NATURAL GAS (TJ, %) (2006)



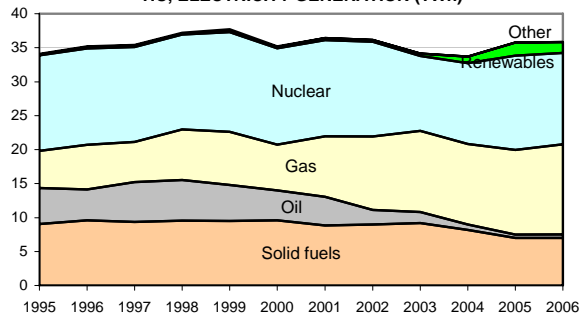
HU, IMPORTS OF HARD COAL (1000T, %) (2006)



HU, ELECTRICITY MIX (in TWh, %) (2006)

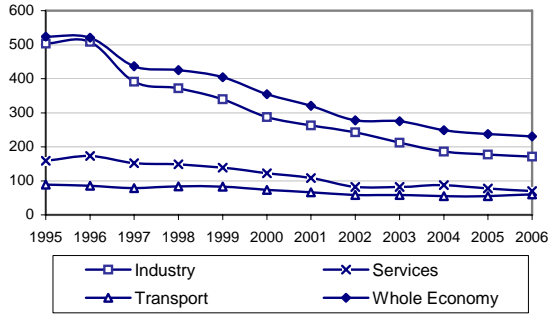


HU, ELECTRICITY GENERATION (TWh)

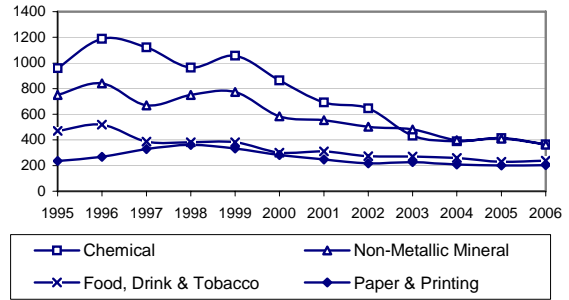


Hungary

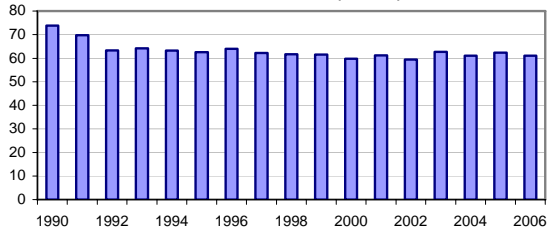
HU, FINAL ENERGY INTENSITY (toe/Meuro)



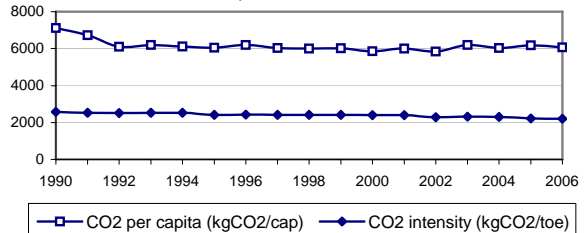
HU, FINAL ENERGY INTENSITY FOR SELECTED INDUSTRIAL SECTORS (toe/Meuro)



HU, CO2 EMISSIONS (Mt CO2)

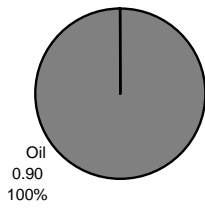


HU, CO2 INDICATORS

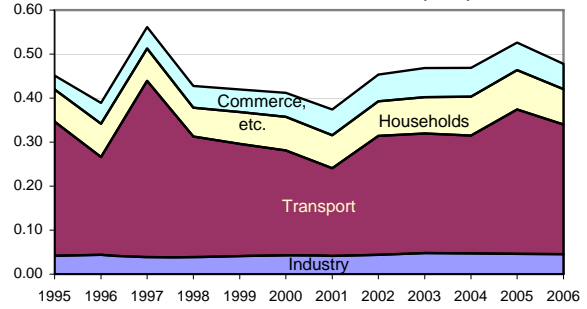


Malta

MT, GROSS INLAND CONSUMPTION (ENERGY MIX in Mtoe, %) (2006)



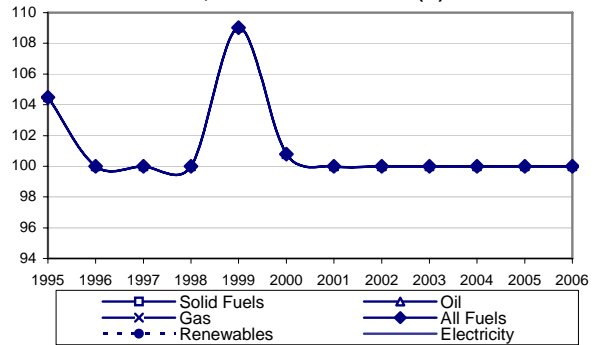
MT, TOTAL FINAL CONSUMPTION (Mtoe)



MT, PRIMARY PRODUCTION AND RECOVERED PRODUCTS (in Mtoe, %) (2006)



MT, IMPORT DEPENDENCY (%)



MT, IMPORTS OF CRUDE OIL
No Imports



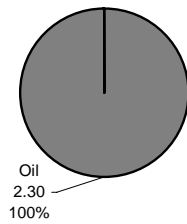
MT, IMPORTS OF NATURAL GAS
No Imports



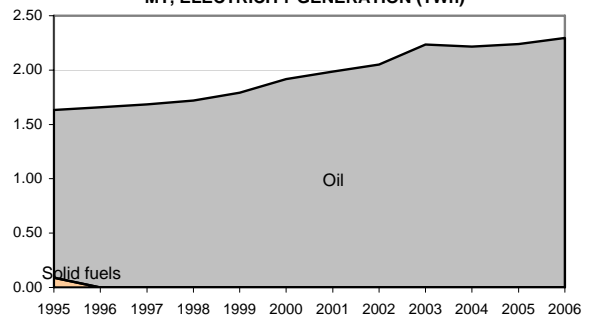
MT, IMPORTS OF HARD COAL
No data available



MT, ELECTRICITY MIX (in TWh, %) (2006)

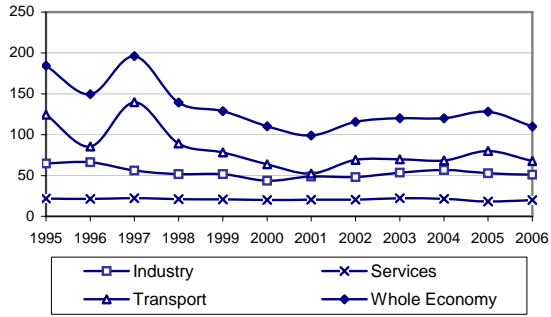


MT, ELECTRICITY GENERATION (TWh)

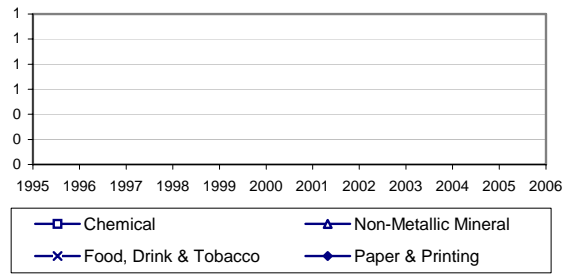


Malta

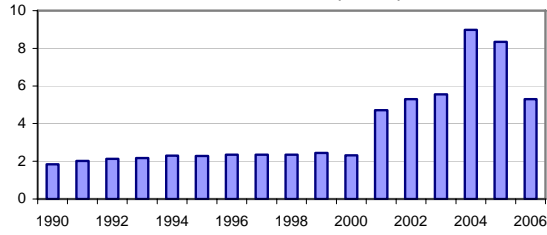
MT, FINAL ENERGY INTENSITY (toe/Meuro)



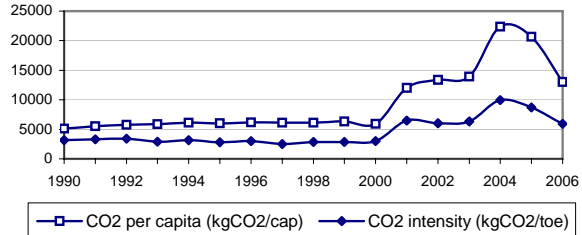
MT, FINAL ENERGY INTENSITY FOR SELECTED INDUSTRIAL SECTORS (toe/Meuro)
-no data available-



MT, CO2 EMISSIONS (Mt CO2)

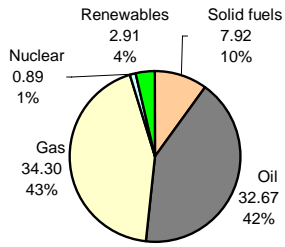


MT, CO2 INDICATORS

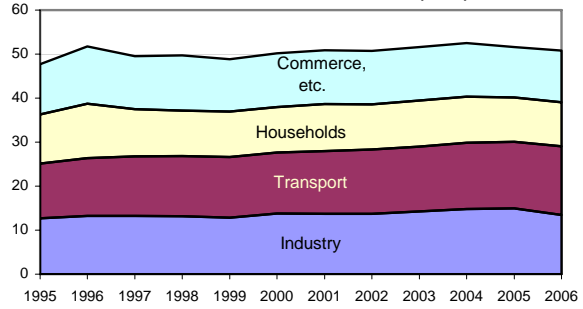


Netherlands

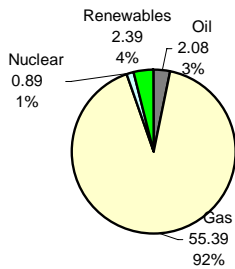
NL, GROSS INLAND CONSUMPTION (ENERGY MIX in Mtoe, %) (2006)



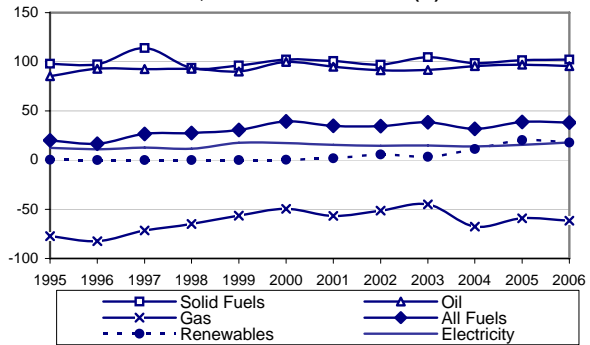
NL, TOTAL FINAL CONSUMPTION (Mtoe)



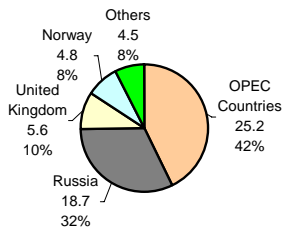
NL, PRIMARY PRODUCTION AND RECOVERED PRODUCTS (in Mtoe, %) (2006)



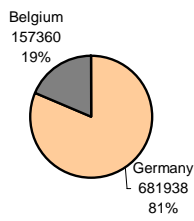
NL, IMPORT DEPENDENCY (%)



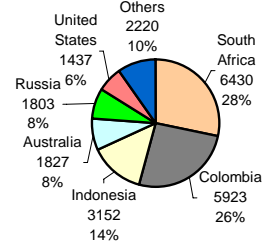
NL, IMPORTS OF CRUDE OIL (Mio tonnes, %) (2006)



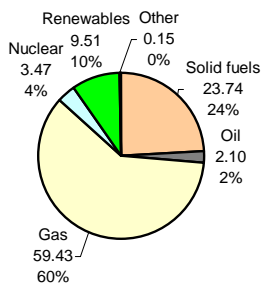
NL, IMPORTS OF NATURAL GAS (TJ, %) (2006)



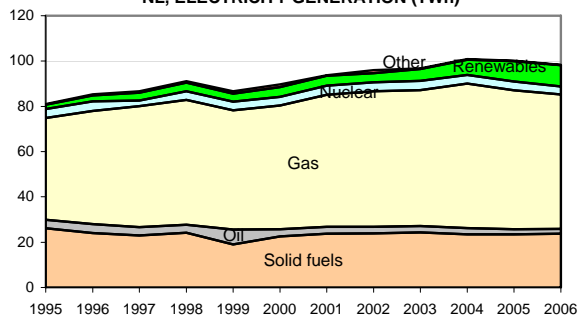
NL, IMPORTS OF HARD COAL (1000T, %) (2006)



NL, ELECTRICITY MIX (in TWh, %) (2006)

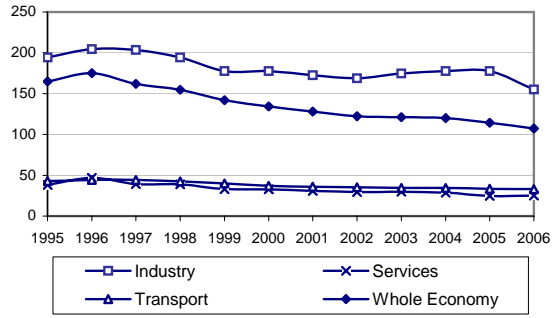


NL, ELECTRICITY GENERATION (TWh)

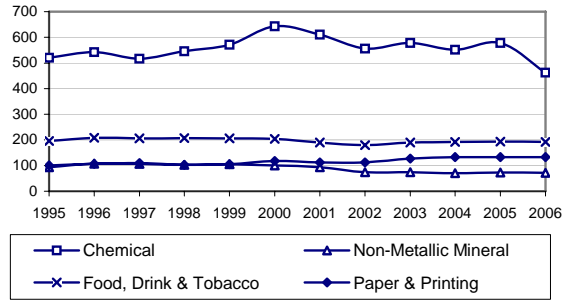


Netherlands

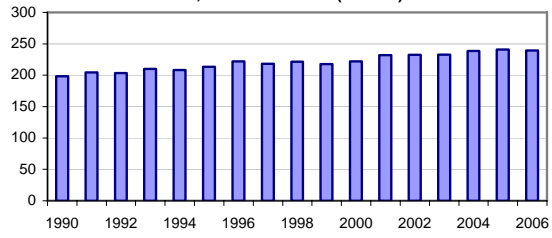
NL, FINAL ENERGY INTENSITY (toe/Meuro)



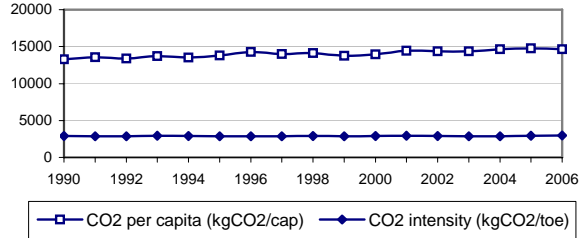
NL, FINAL ENERGY INTENSITY FOR SELECTED INDUSTRIAL SECTORS (toe/Meuro)



NL, CO2 EMISSIONS (Mt CO2)

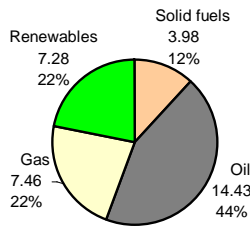


NL, CO2 INDICATORS

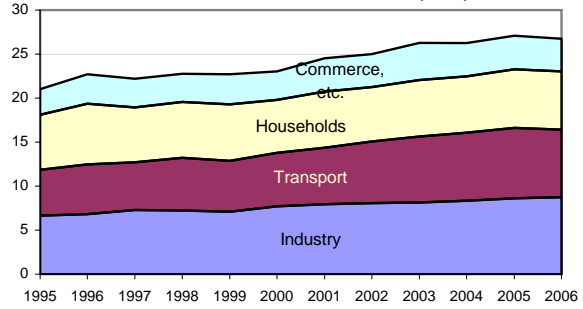


Austria

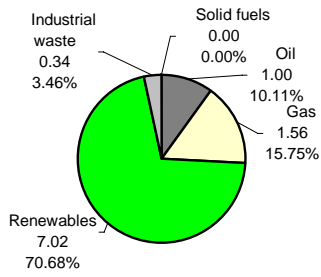
AT, GROSS INLAND CONSUMPTION (ENERGY MIX in Mtoe, %) (2006)



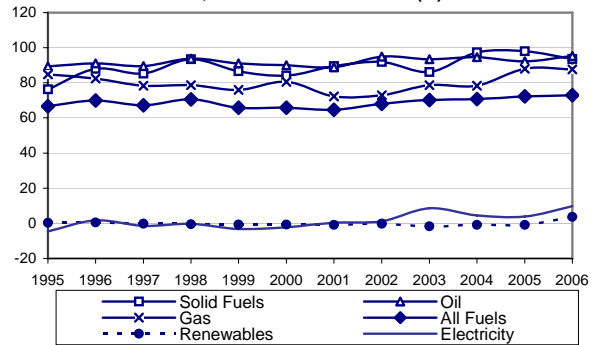
AT, TOTAL FINAL CONSUMPTION (Mtoe)



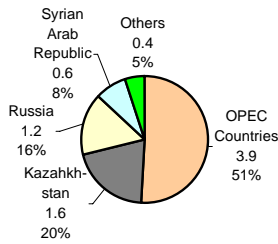
AT, PRIMARY PRODUCTION AND RECOVERED PRODUCTS (in Mtoe, %) (2006)



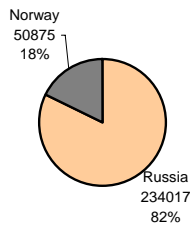
AT, IMPORT DEPENDENCY (%)



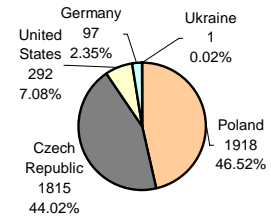
AT, IMPORTS OF CRUDE OIL (Mio tonnes, %) (2006)



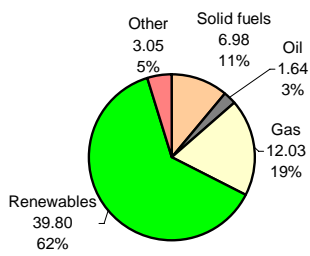
AT, IMPORTS OF NATURAL GAS (TJ, %) (2006)



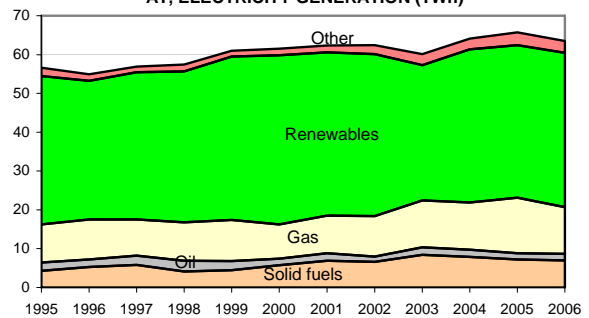
AT, IMPORTS OF HARD COAL (1000T, %) (2006)



AT, ELECTRICITY MIX (in TWh, %) (2006)

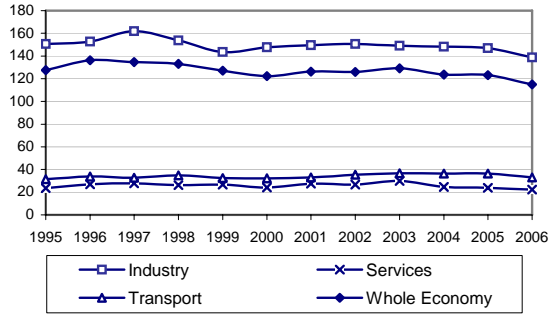


AT, ELECTRICITY GENERATION (TWh)

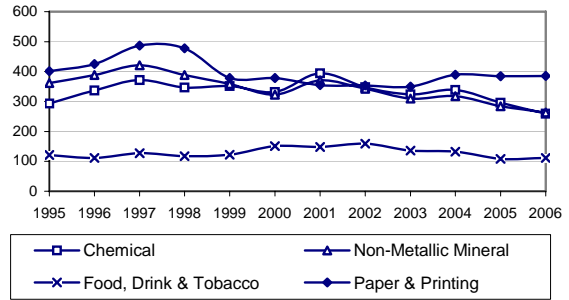


Austria

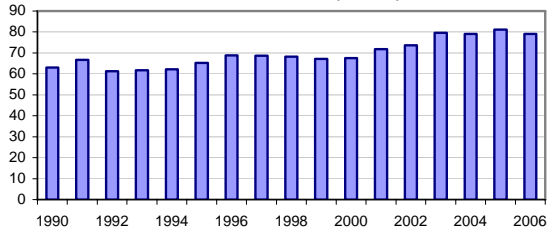
AT, FINAL ENERGY INTENSITY (toe/Meuro)



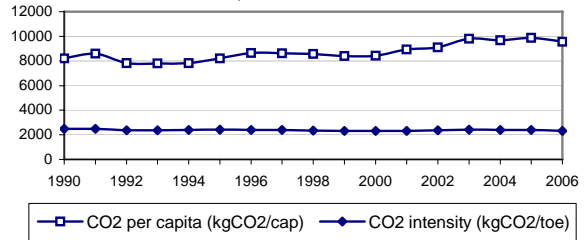
AT, FINAL ENERGY INTENSITY FOR SELECTED INDUSTRIAL SECTORS (toe/Meuro)



AT, CO2 EMISSIONS (Mt CO2)

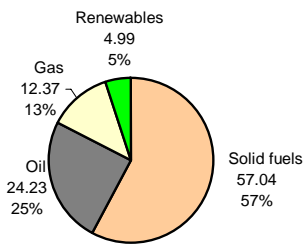


AT, CO2 INDICATORS

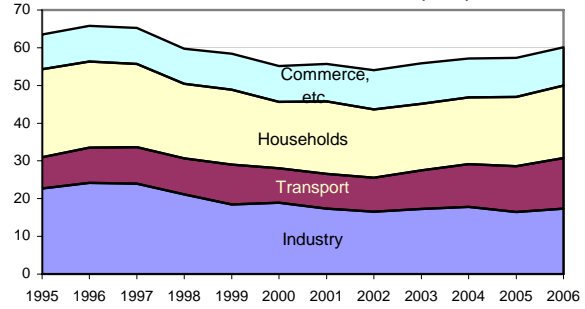


Poland

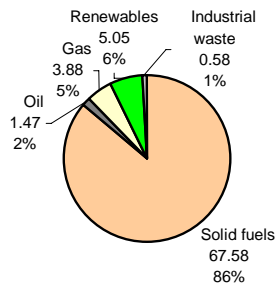
PL, GROSS INLAND CONSUMPTION (ENERGY MIX in Mtoe, %) (2006)



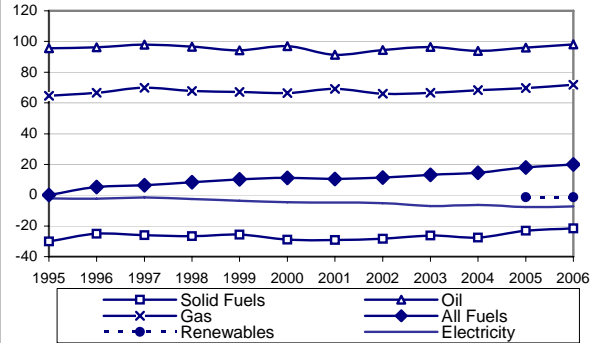
PL, TOTAL FINAL CONSUMPTION (Mtoe)



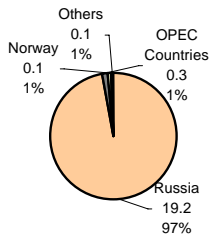
PL, PRIMARY PRODUCTION AND RECOVERED PRODUCTS (in Mtoe, %) (2006)



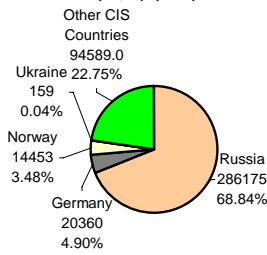
PL, IMPORT DEPENDENCY (%)



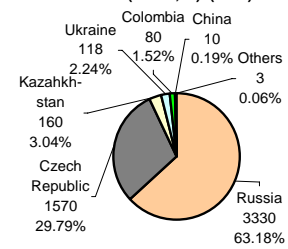
PL, IMPORTS OF CRUDE OIL (Mio tonnes, %) (2006)



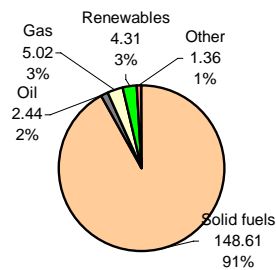
PL, IMPORTS OF NATURAL GAS (TJ, %) (2006)



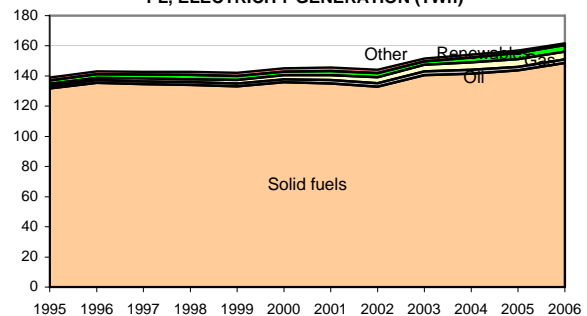
PL, IMPORTS OF HARD COAL (1000T, %) (2006)



PL, ELECTRICITY MIX (in TWh, %) (2006)

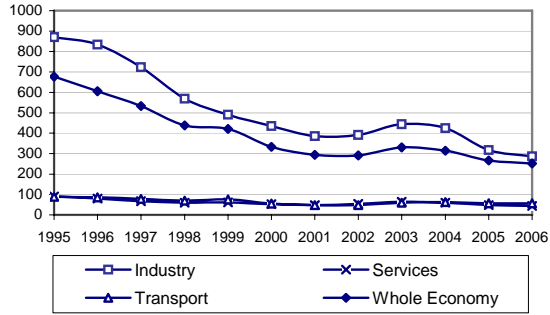


PL, ELECTRICITY GENERATION (TWh)

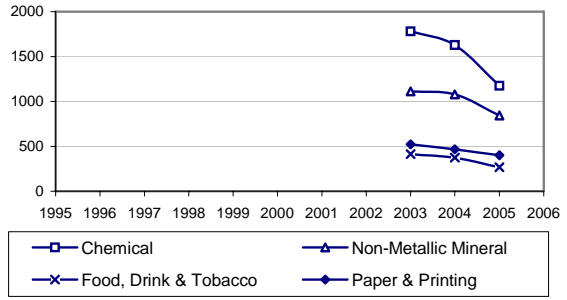


Poland

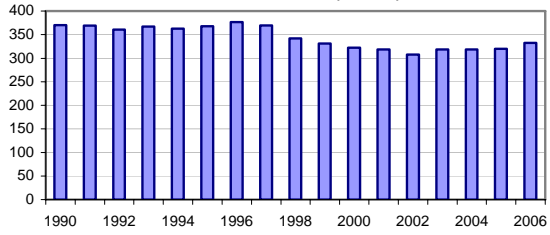
PL, FINAL ENERGY INTENSITY (toe/Meuro)



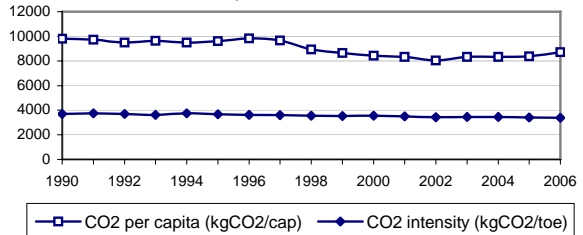
PL, FINAL ENERGY INTENSITY FOR SELECTED INDUSTRIAL SECTORS (toe/Meuro)



PL, CO2 EMISSIONS (Mt CO2)

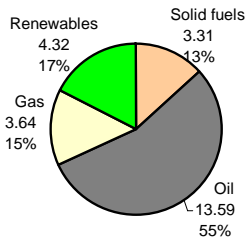


PL, CO2 INDICATORS

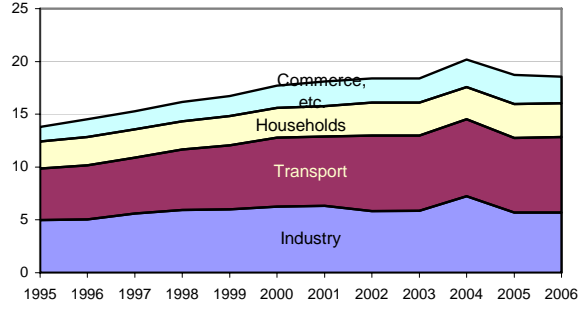


Portugal

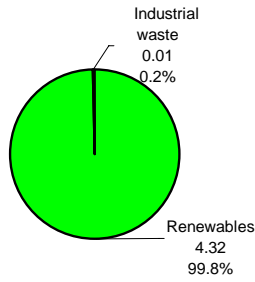
PT, GROSS INLAND CONSUMPTION (ENERGY MIX in Mtoe, %) (2006)



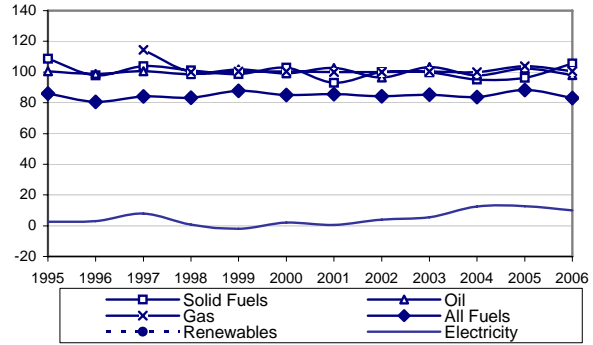
PT, TOTAL FINAL CONSUMPTION (Mtoe)



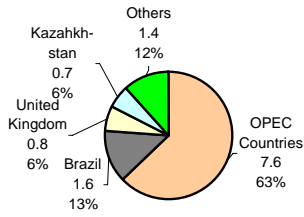
PT, PRIMARY PRODUCTION AND RECOVERED PRODUCTS (in Mtoe, %) (2006)



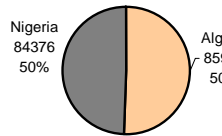
PT, IMPORT DEPENDENCY (%)



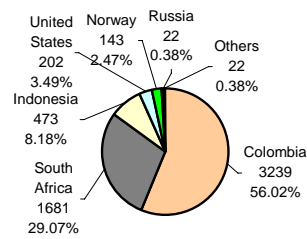
PT, IMPORTS OF CRUDE OIL (Mio tonnes, %) (2006)



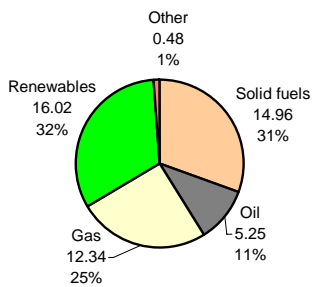
PT, IMPORTS OF NATURAL GAS (TJ, %) (2006)



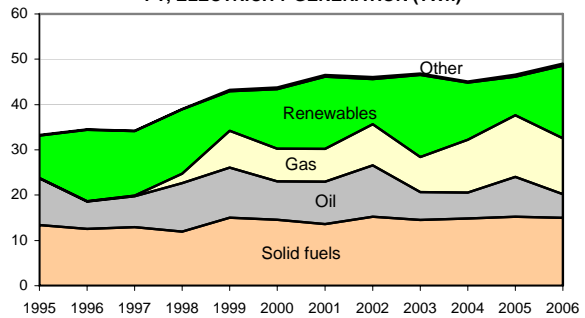
PT, IMPORTS OF HARD COAL (1000T, %) (2006)



PT, ELECTRICITY MIX (in TWh, %) (2006)

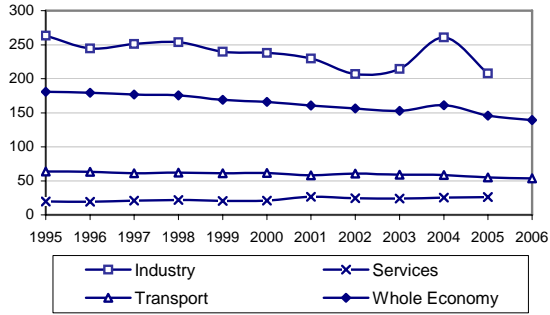


PT, ELECTRICITY GENERATION (TWh)

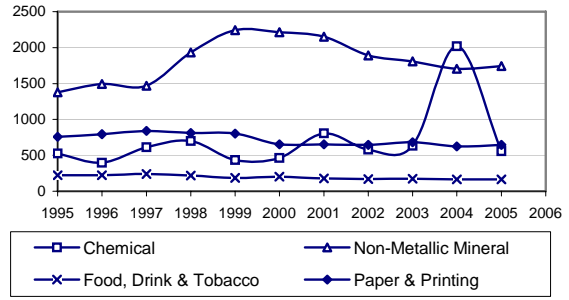


Portugal

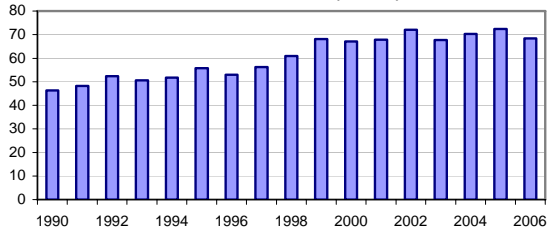
PT, FINAL ENERGY INTENSITY (toe/Meuro)



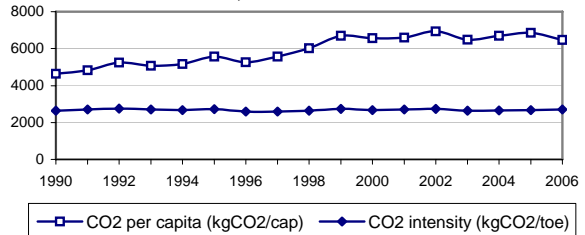
PT, FINAL ENERGY INTENSITY FOR SELECTED INDUSTRIAL SECTORS (toe/Meuro)



PT, CO2 EMISSIONS (Mt CO2)

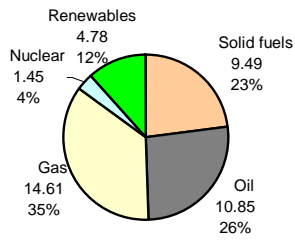


PT, CO2 INDICATORS

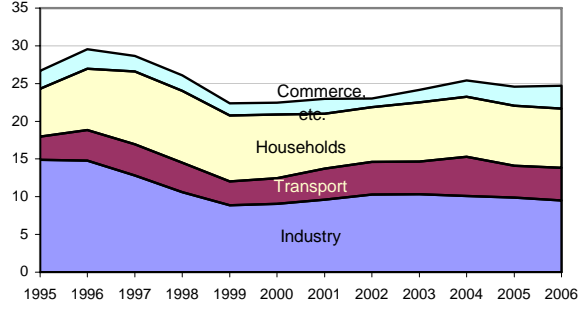


Romania

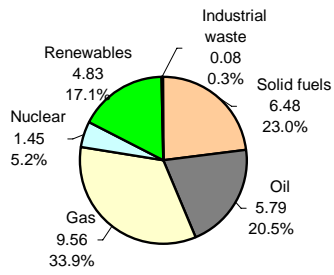
RO, GROSS INLAND CONSUMPTION (ENERGY MIX in Mtoe, %) (2006)



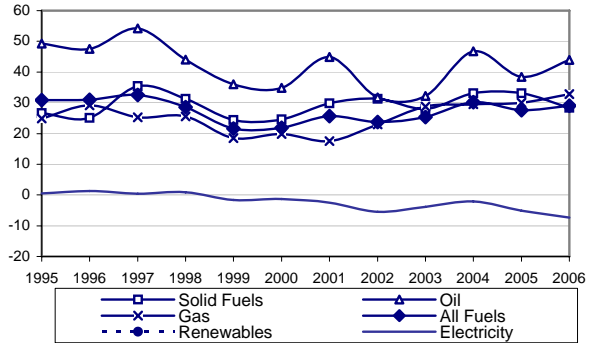
RO, TOTAL FINAL CONSUMPTION (Mtoe)



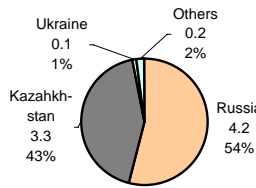
RO, PRIMARY PRODUCTION AND RECOVERED PRODUCTS (in Mtoe, %) (2006)



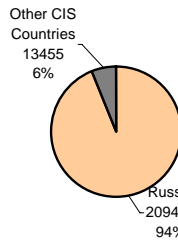
RO, IMPORT DEPENDENCY (%)



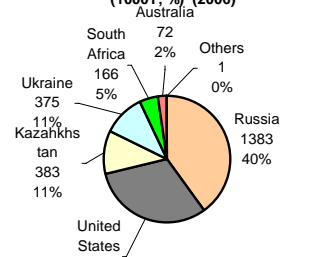
RO, IMPORTS OF CRUDE OIL (Mio tonnes, %) (2006)



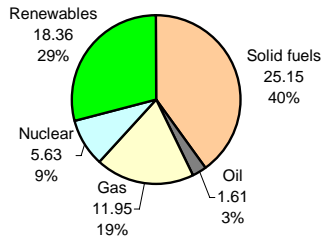
RO, IMPORTS OF NATURAL GAS (TJ, %) (2006)



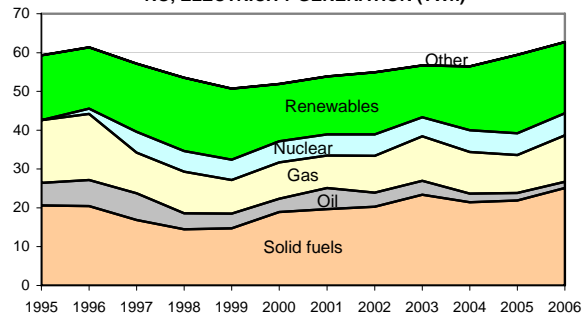
RO, IMPORTS OF HARD COAL (1000T, %) (2006)



RO, ELECTRICITY MIX (in TWh, %) (2006)

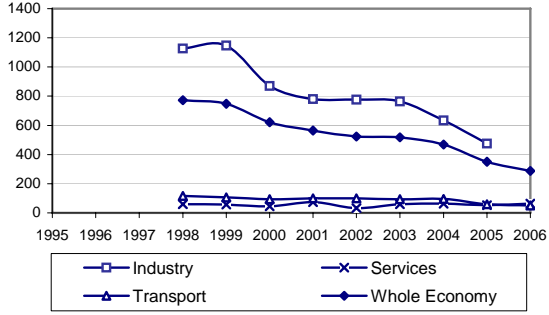


RO, ELECTRICITY GENERATION (TWh)

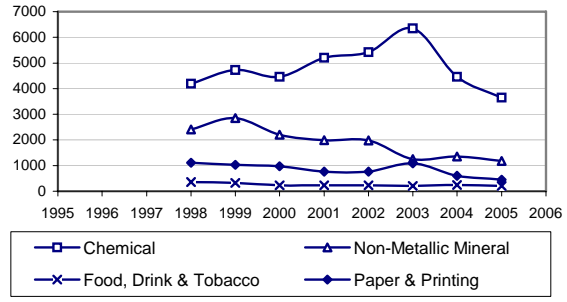


Romania

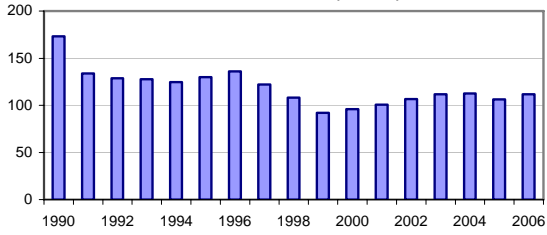
RO, FINAL ENERGY INTENSITY (toe/Meuro)



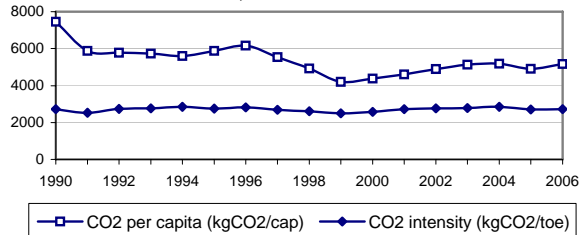
RO, FINAL ENERGY INTENSITY FOR SELECTED INDUSTRIAL SECTORS (toe/Meuro)



RO, CO2 EMISSIONS (Mt CO2)

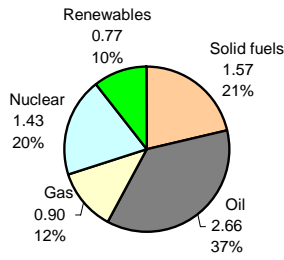


RO, CO2 INDICATORS

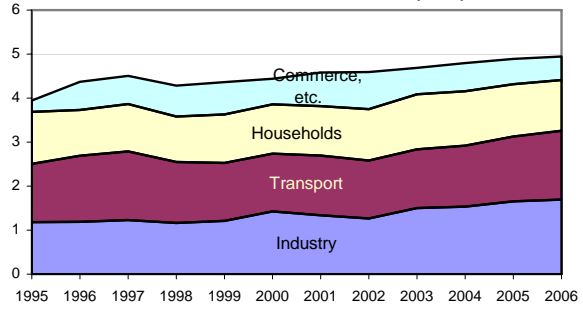


Slovenia

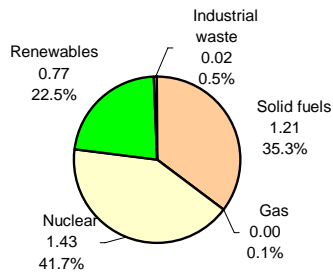
SI, GROSS INLAND CONSUMPTION (ENERGY MIX in Mtoe, %) (2006)



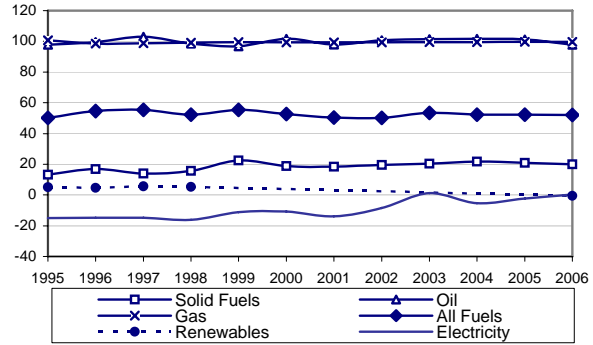
SI, TOTAL FINAL CONSUMPTION (Mtoe)



SI, PRIMARY PRODUCTION AND RECOVERED PRODUCTS (in Mtoe, %) (2006)



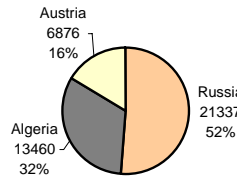
SI, IMPORT DEPENDENCY (%)



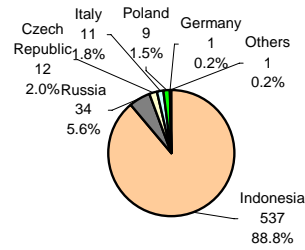
SI, IMPORTS OF CRUDE OIL
No Imports



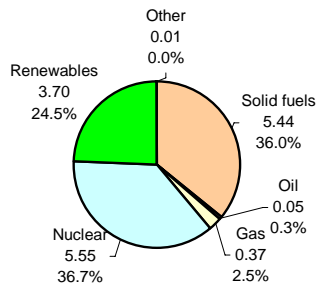
SI, IMPORTS OF NATURAL GAS (TJ, %) (2006)



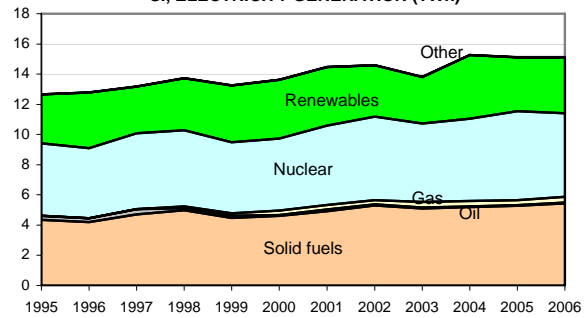
SI, IMPORTS OF HARD COAL (1000T, %) (2006)



SI, ELECTRICITY MIX (in TWh, %) (2006)

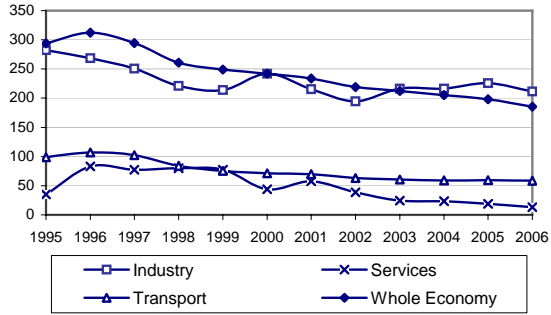


SI, ELECTRICITY GENERATION (TWh)

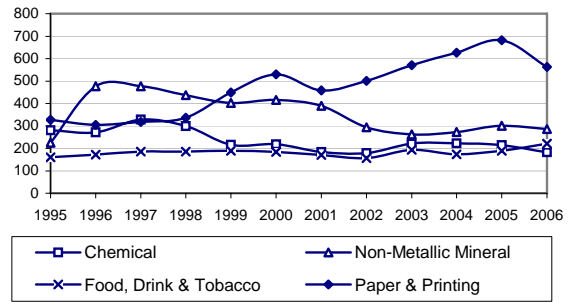


Slovenia

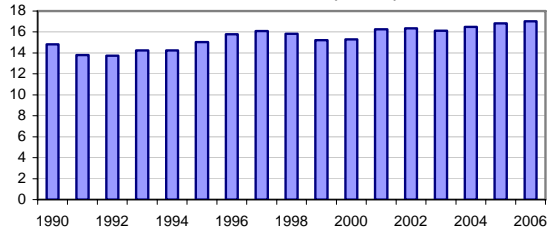
SI, FINAL ENERGY INTENSITY (toe/Meuro)



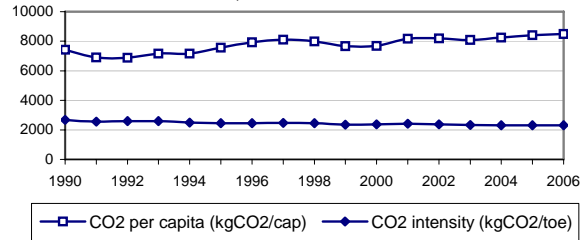
SI, FINAL ENERGY INTENSITY FOR SELECTED INDUSTRIAL SECTORS (toe/Meuro)



SI, CO2 EMISSIONS (Mt CO2)

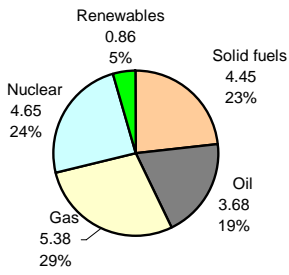


SI, CO2 INDICATORS

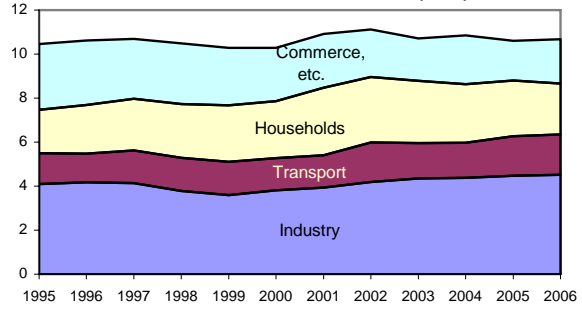


Slovak Republic

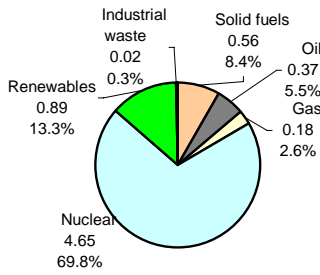
SK, GROSS INLAND CONSUMPTION (ENERGY MIX in Mtoe, %) (2006)



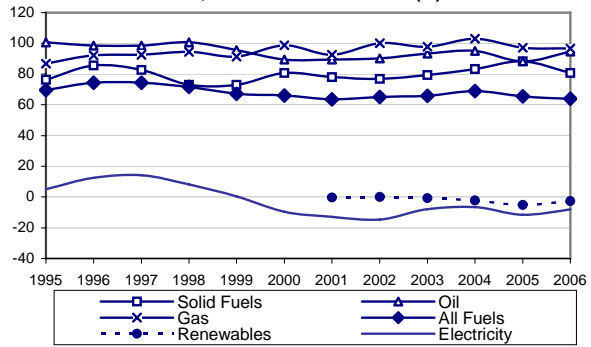
SK, TOTAL FINAL CONSUMPTION (Mtoe)



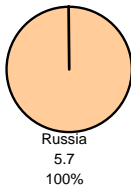
SK, PRIMARY PRODUCTION AND RECOVERED PRODUCTS (in Mtoe, %) (2006)



SK, IMPORT DEPENDENCY (%)



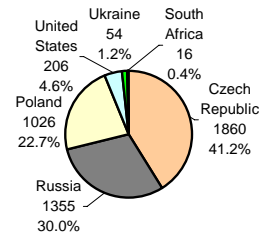
SK, IMPORTS OF CRUDE OIL (Mio tonnes, %) (2006)



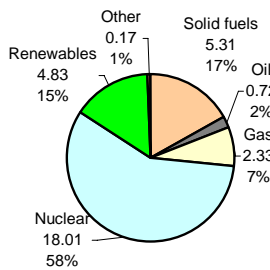
SK, IMPORTS OF NATURAL GAS (TJ, %) (2006)



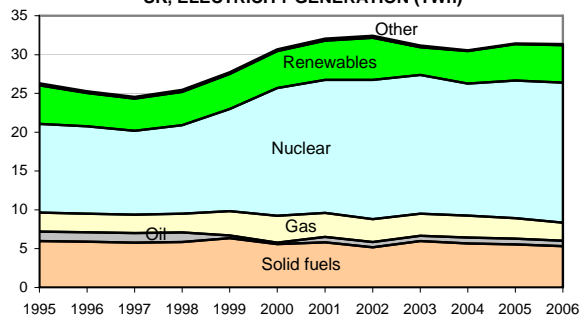
SK, IMPORTS OF HARD COAL (1000T, %) (2006)



SK, ELECTRICITY MIX (in TWh, %) (2006)

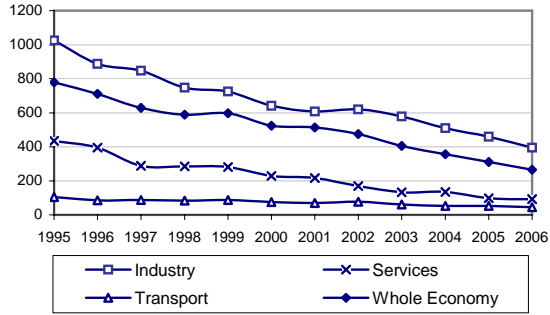


SK, ELECTRICITY GENERATION (TWh)

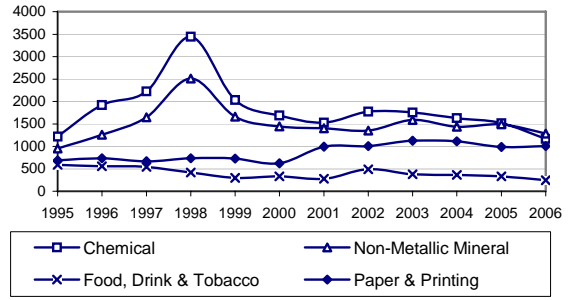


Slovak Republic

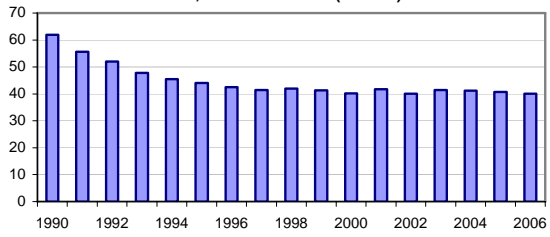
SK, FINAL ENERGY INTENSITY (toe/Meuro)



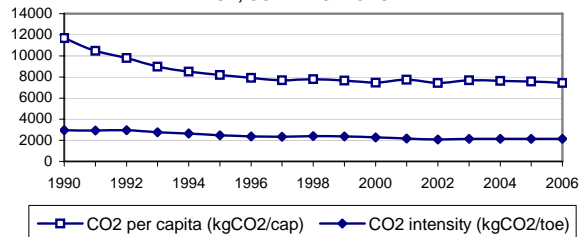
SK, FINAL ENERGY INTENSITY FOR SELECTED INDUSTRIAL SECTORS (toe/Meuro)



SK, CO2 EMISSIONS (Mt CO2)

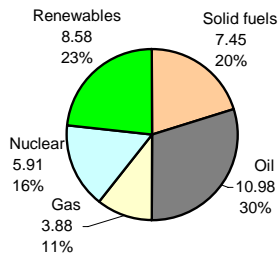


SK, CO2 INDICATORS

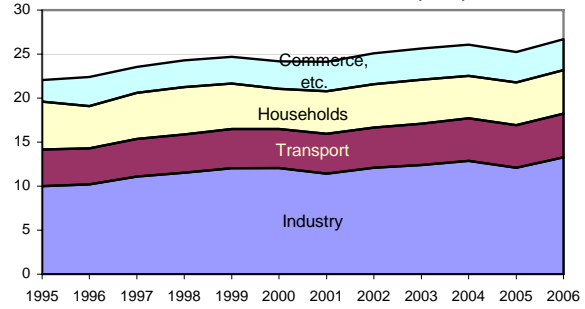


Finland

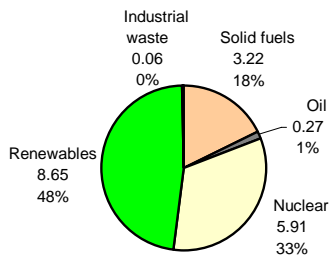
FI, GROSS INLAND CONSUMPTION (ENERGY MIX in Mtoe, %) (2006)



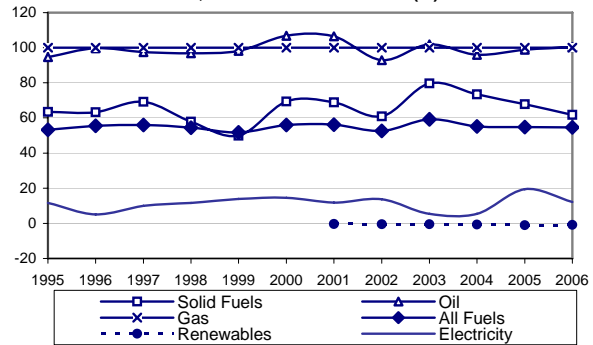
FI, TOTAL FINAL CONSUMPTION (Mtoe)



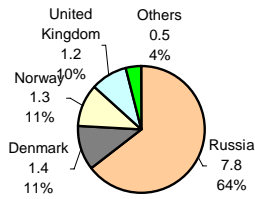
FI, PRIMARY PRODUCTION AND RECOVERED PRODUCTS (in Mtoe, %) (2006)



FI, IMPORT DEPENDENCY (%)



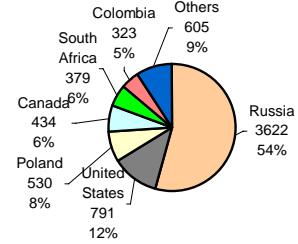
FI, IMPORTS OF CRUDE OIL (Mio tonnes, %) (2006)



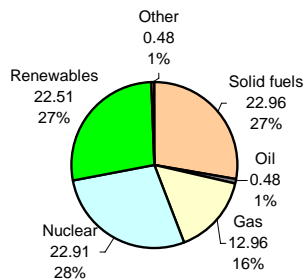
FI, IMPORTS OF NATURAL GAS (TJ, %) (2006)



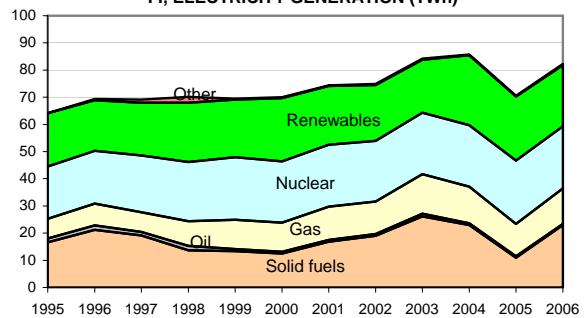
FI, IMPORTS OF HARD COAL (1000T, %) (2006)



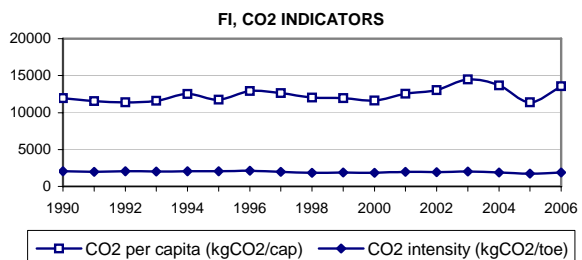
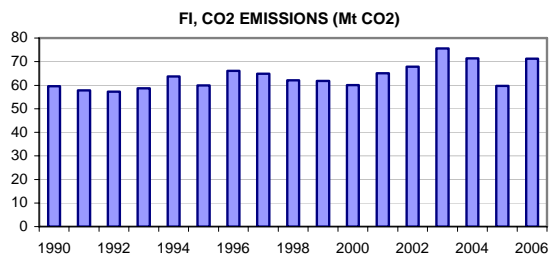
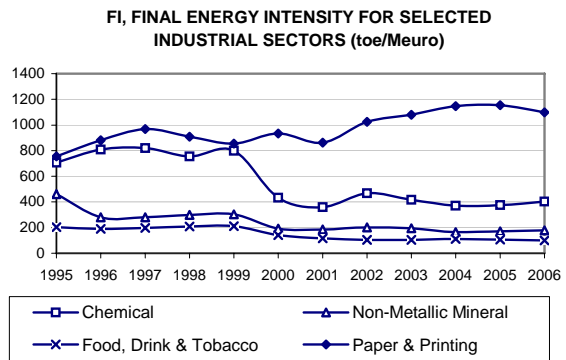
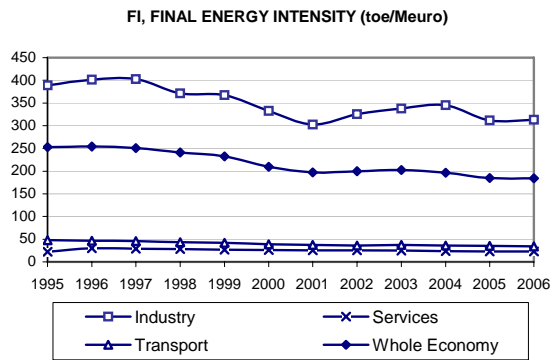
FI, ELECTRICITY MIX (in TWh, %) (2006)



FI, ELECTRICITY GENERATION (TWh)

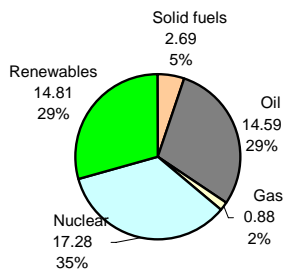


Finland

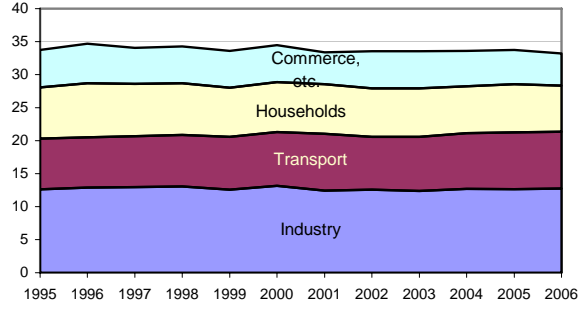


Sweden

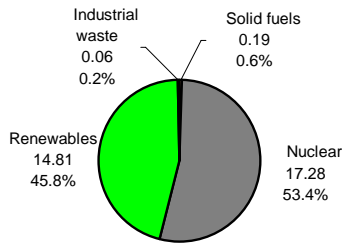
SE, GROSS INLAND CONSUMPTION (ENERGY MIX in Mtoe, %) (2006)



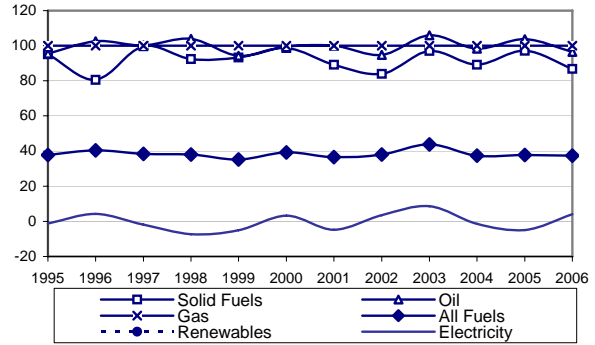
SE, TOTAL FINAL CONSUMPTION (Mtoe)



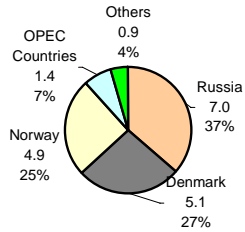
SE, PRIMARY PRODUCTION AND RECOVERED PRODUCTS (in Mtoe, %) (2006)



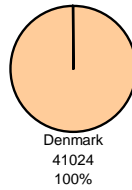
SE, IMPORT DEPENDENCY (%)



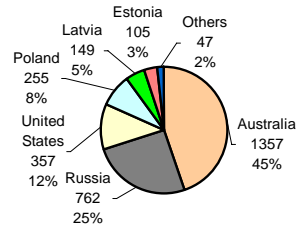
SE, IMPORTS OF CRUDE OIL (Mio tonnes, %) (2006)



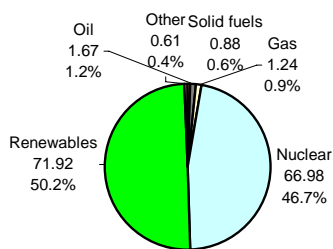
SE, IMPORTS OF NATURAL GAS (TJ, %) (2006)



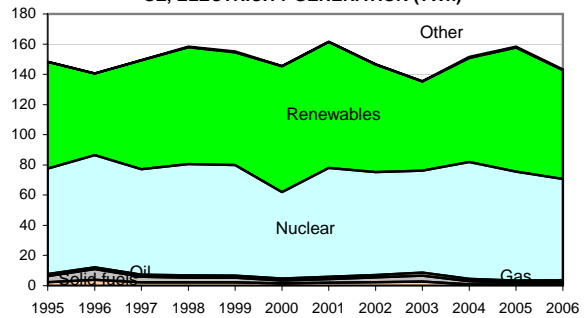
SE, IMPORTS OF HARD COAL (1000T, %) (2006)



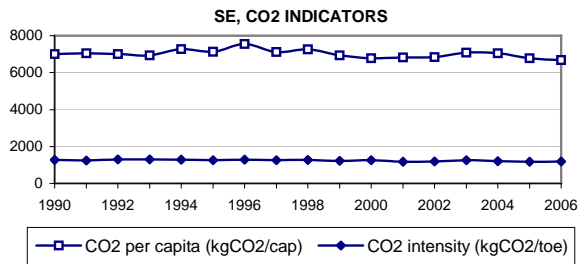
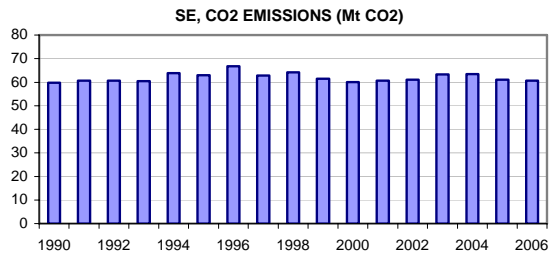
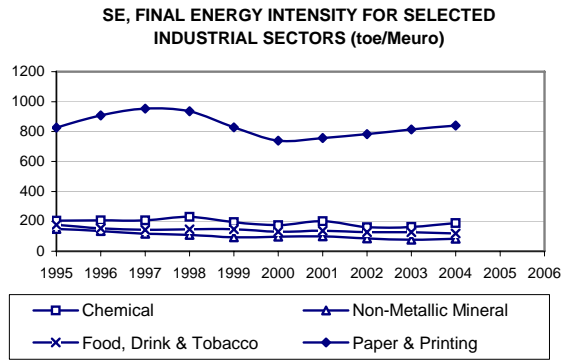
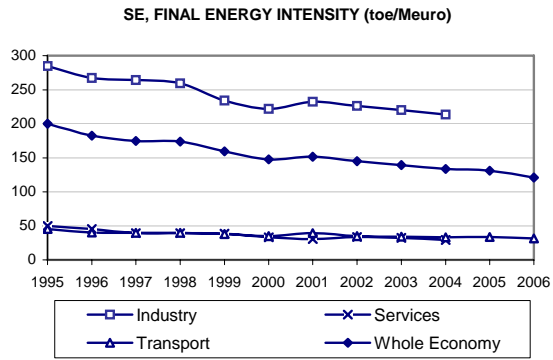
SE, ELECTRICITY MIX (in TWh, %) (2006)



SE, ELECTRICITY GENERATION (TWh)

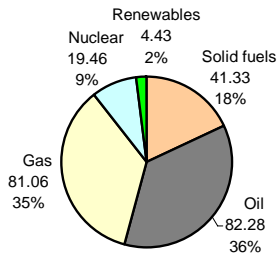


Sweden

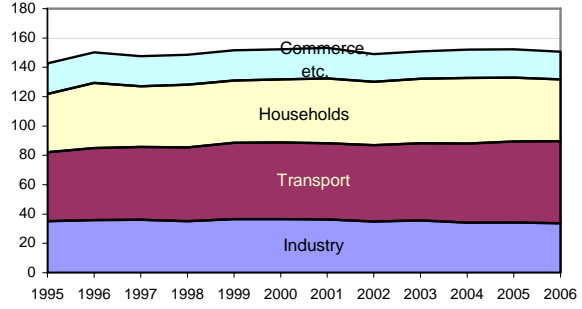


United Kingdom

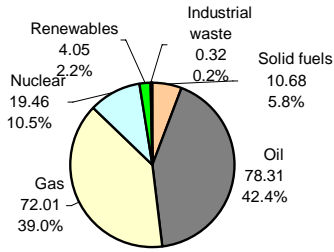
UK, GROSS INLAND CONSUMPTION (ENERGY MIX in Mtoe, %) (2006)



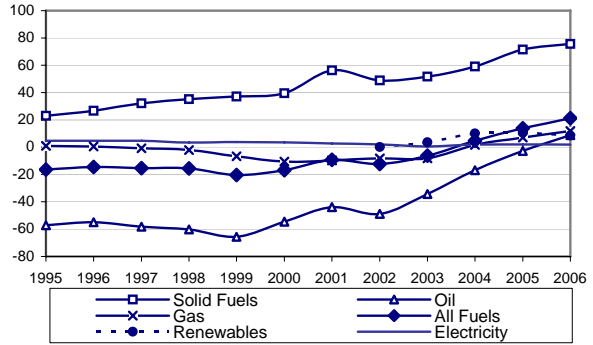
UK, TOTAL FINAL CONSUMPTION (Mtoe)



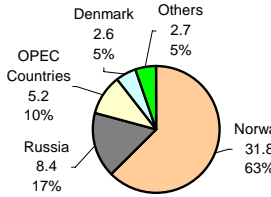
UK, PRIMARY PRODUCTION AND RECOVERED PRODUCTS (in Mtoe, %) (2006)



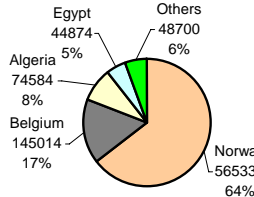
UK, IMPORT DEPENDENCY (%)



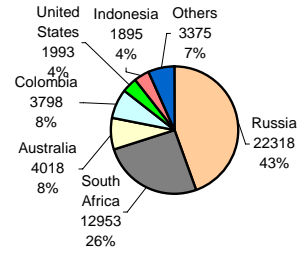
UK, IMPORTS OF CRUDE OIL (Mio tonnes, %) (2006)



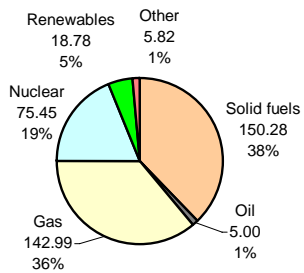
UK, IMPORTS OF NATURAL GAS (TJ, %) (2006)



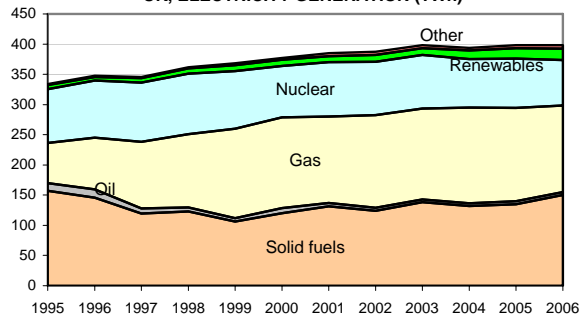
UK, IMPORTS OF HARD COAL (1000T, %) (2006)



UK, ELECTRICITY MIX (in TWh, %) (2006)



UK, ELECTRICITY GENERATION (TWh)



United Kingdom

