

EN



COMMISSION OF THE EUROPEAN COMMUNITIES

Brussels, 27.7.2009
COM(2009) 391 final

2009/0110 (COD)

Volume IV

Proposal for a

DECISION OF THE EUROPEAN PARLIAMENT AND OF THE COUNCIL

**on Community guidelines for the development
of the trans-European transport network**

(Recast)

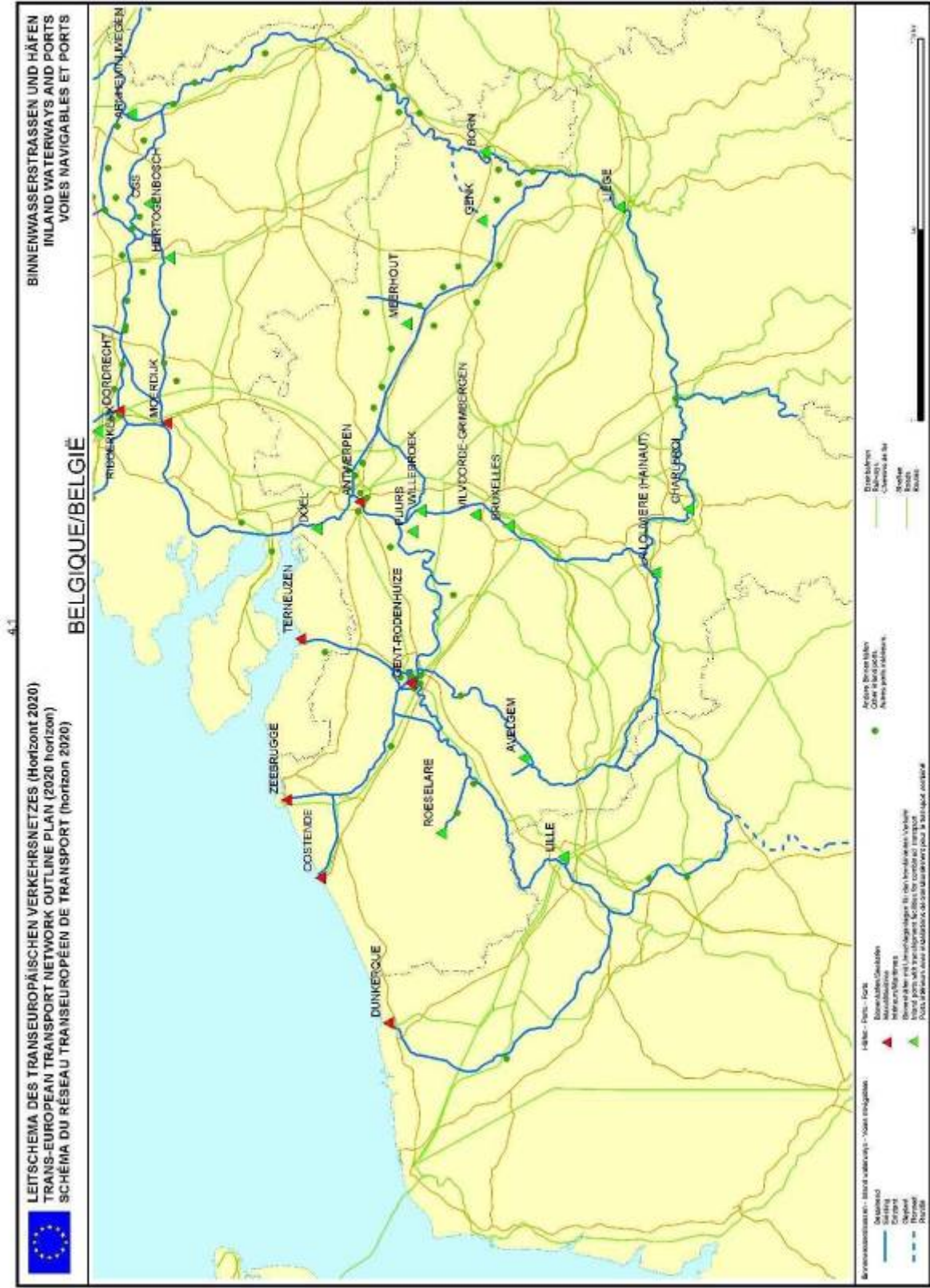
(Text with EEA relevance)

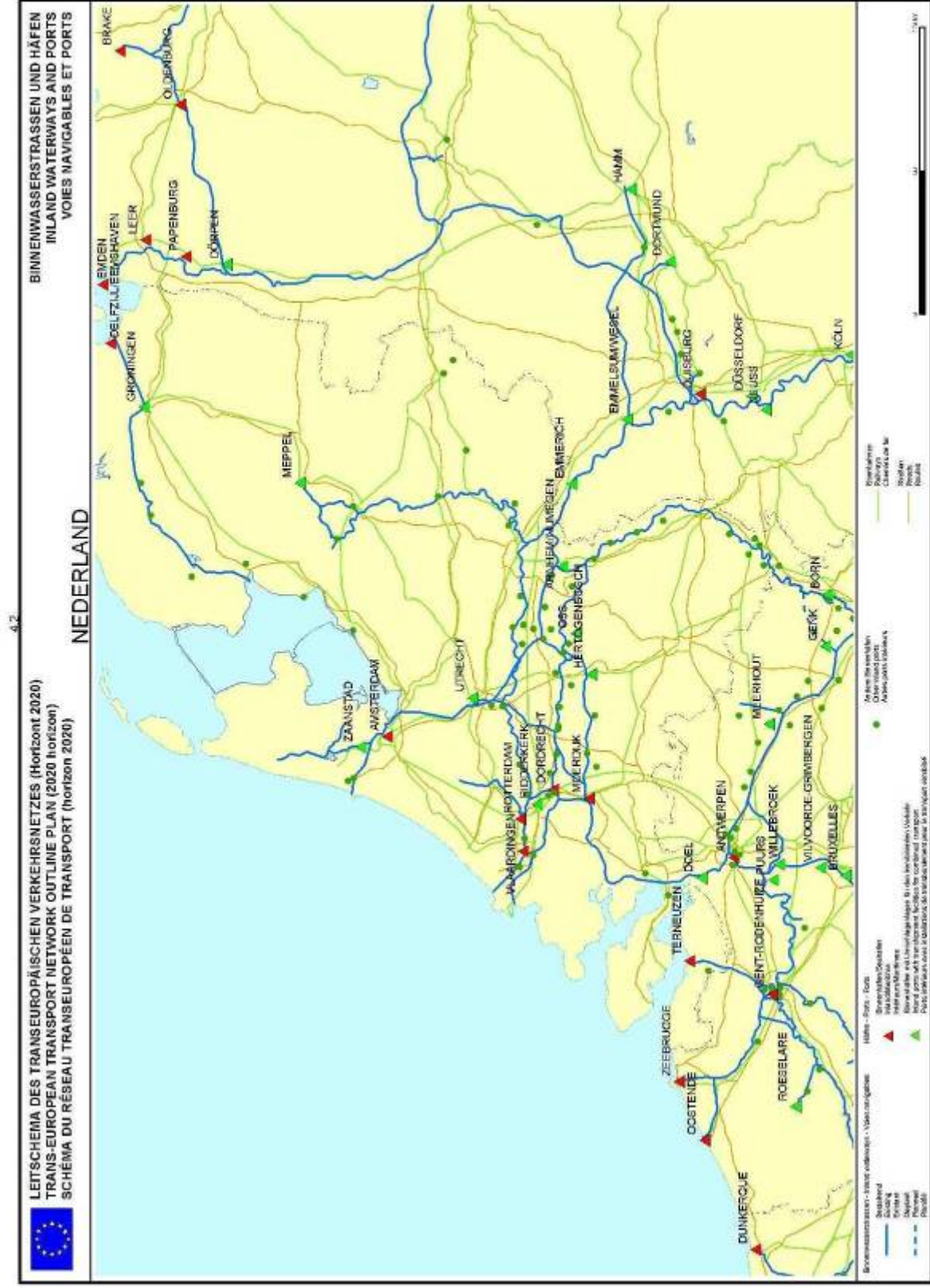
↓new

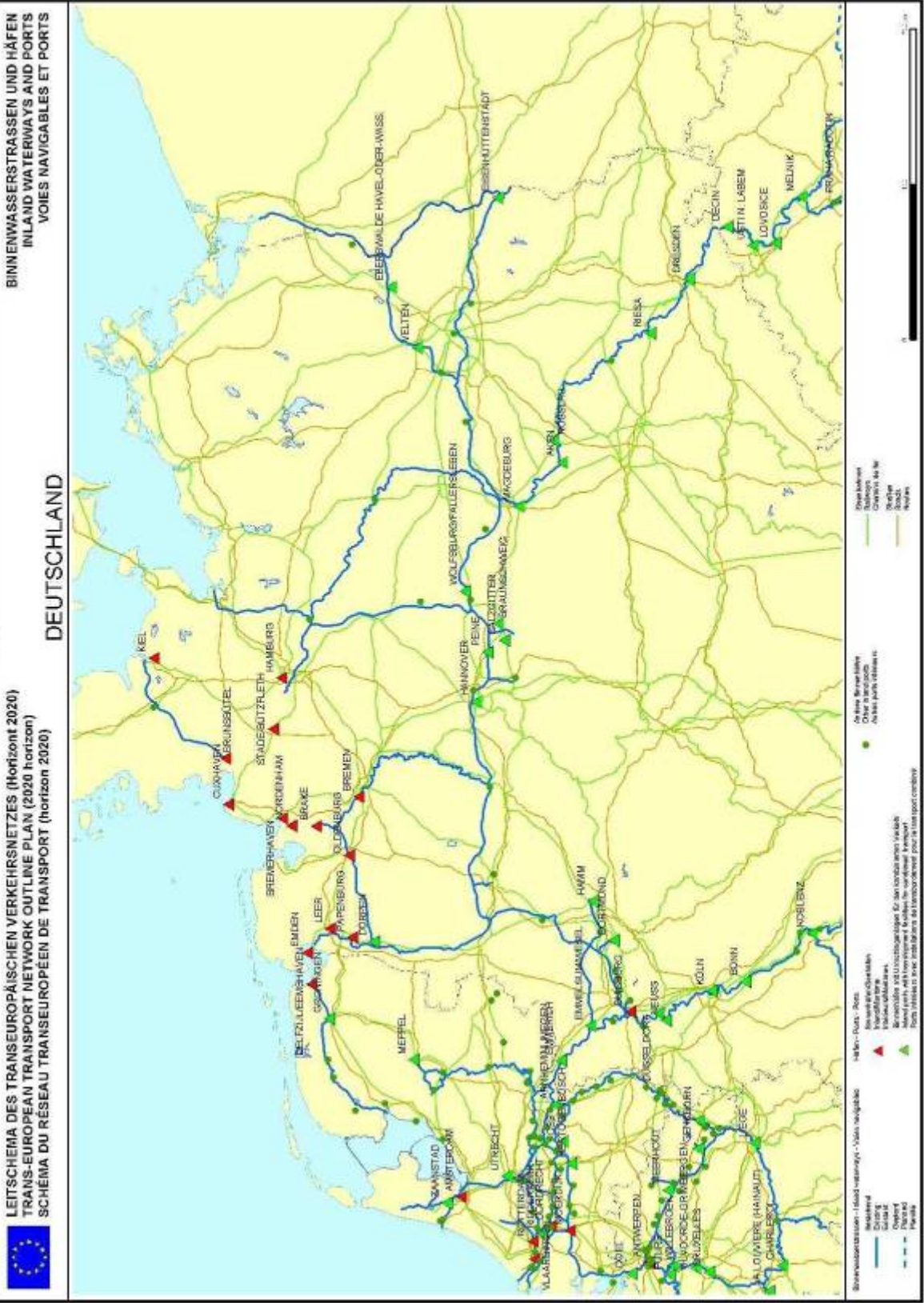
INLAND WATERWAY NETWORK AND INLAND PORTS

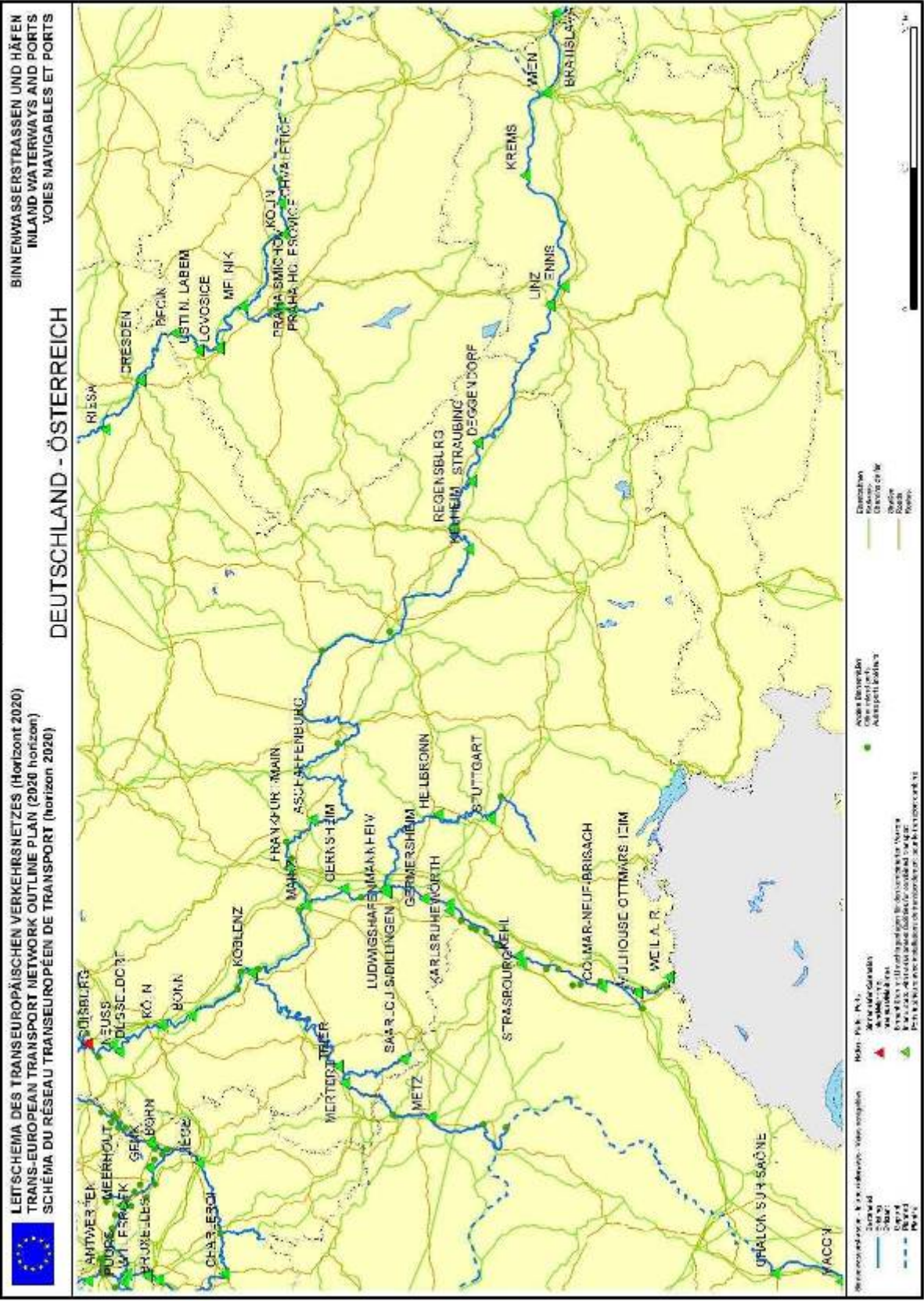
SECTION 4

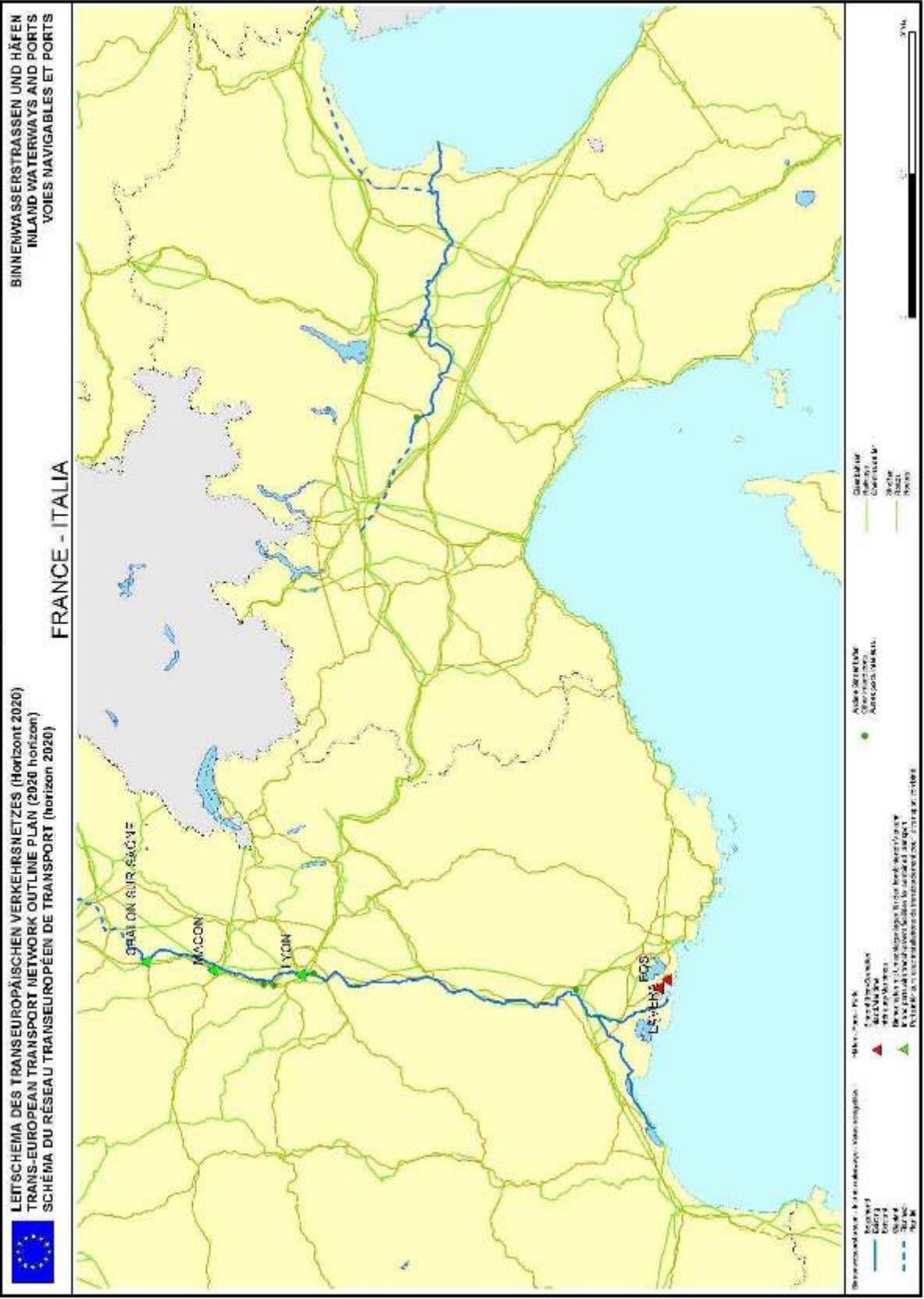


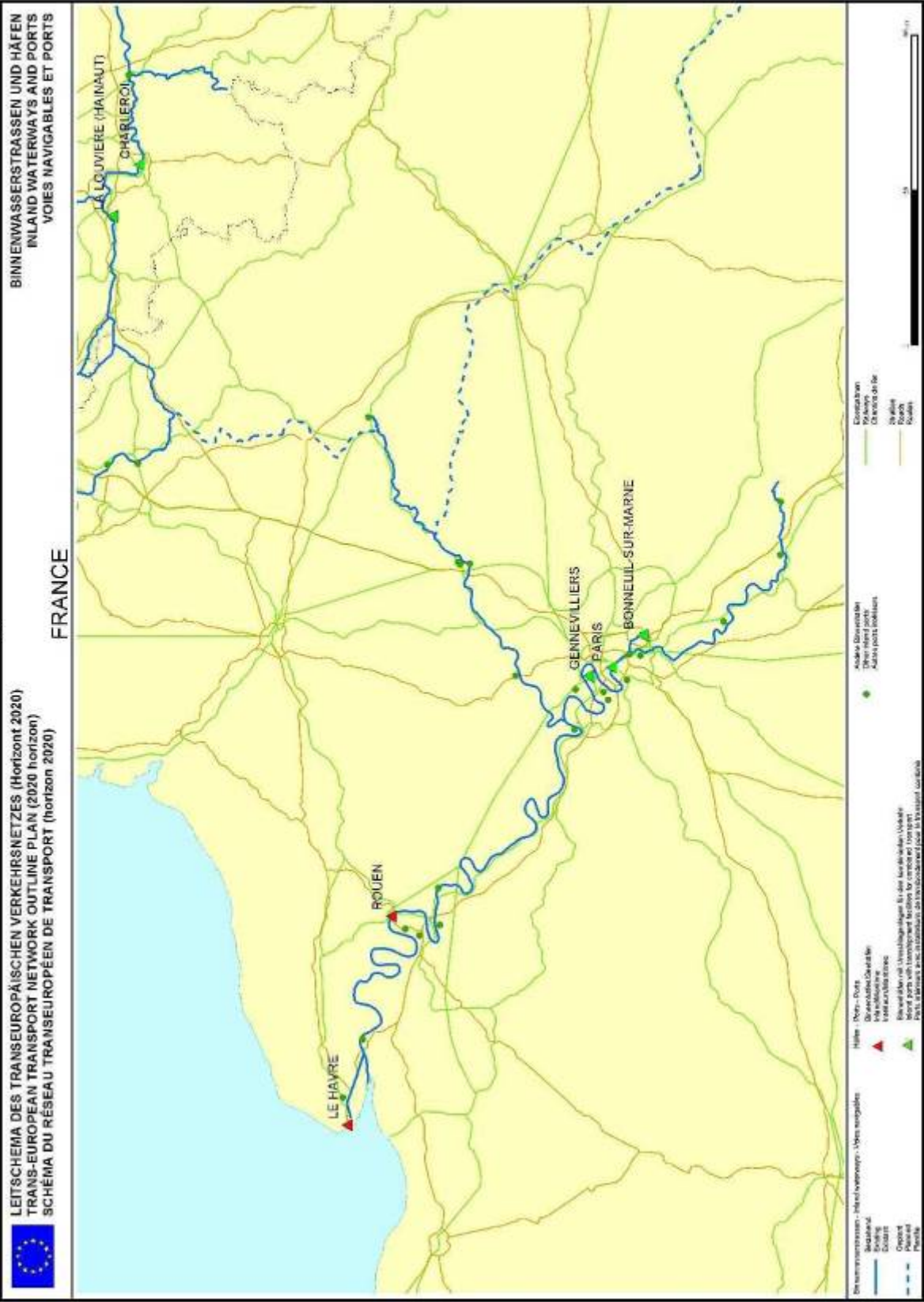


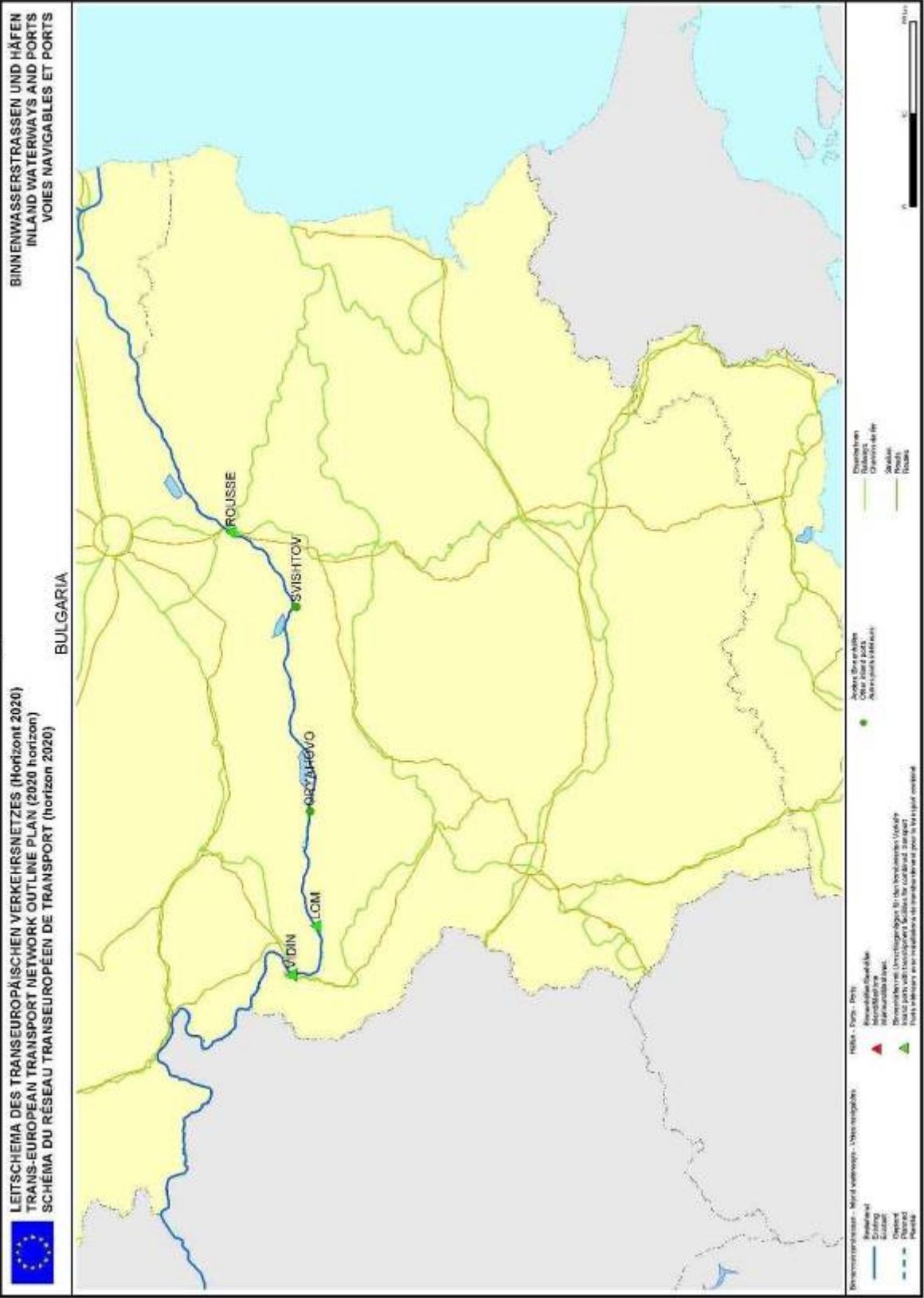


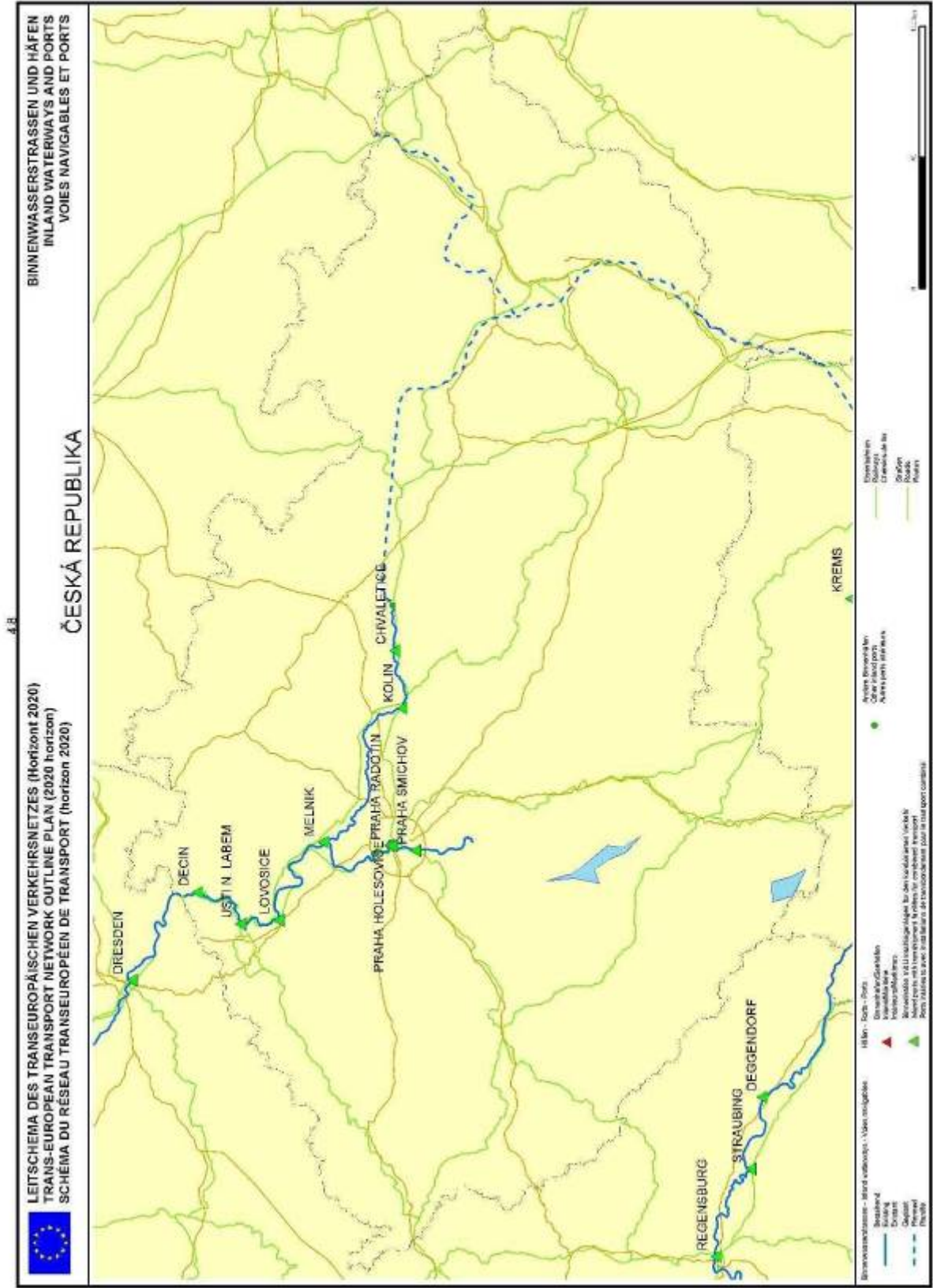


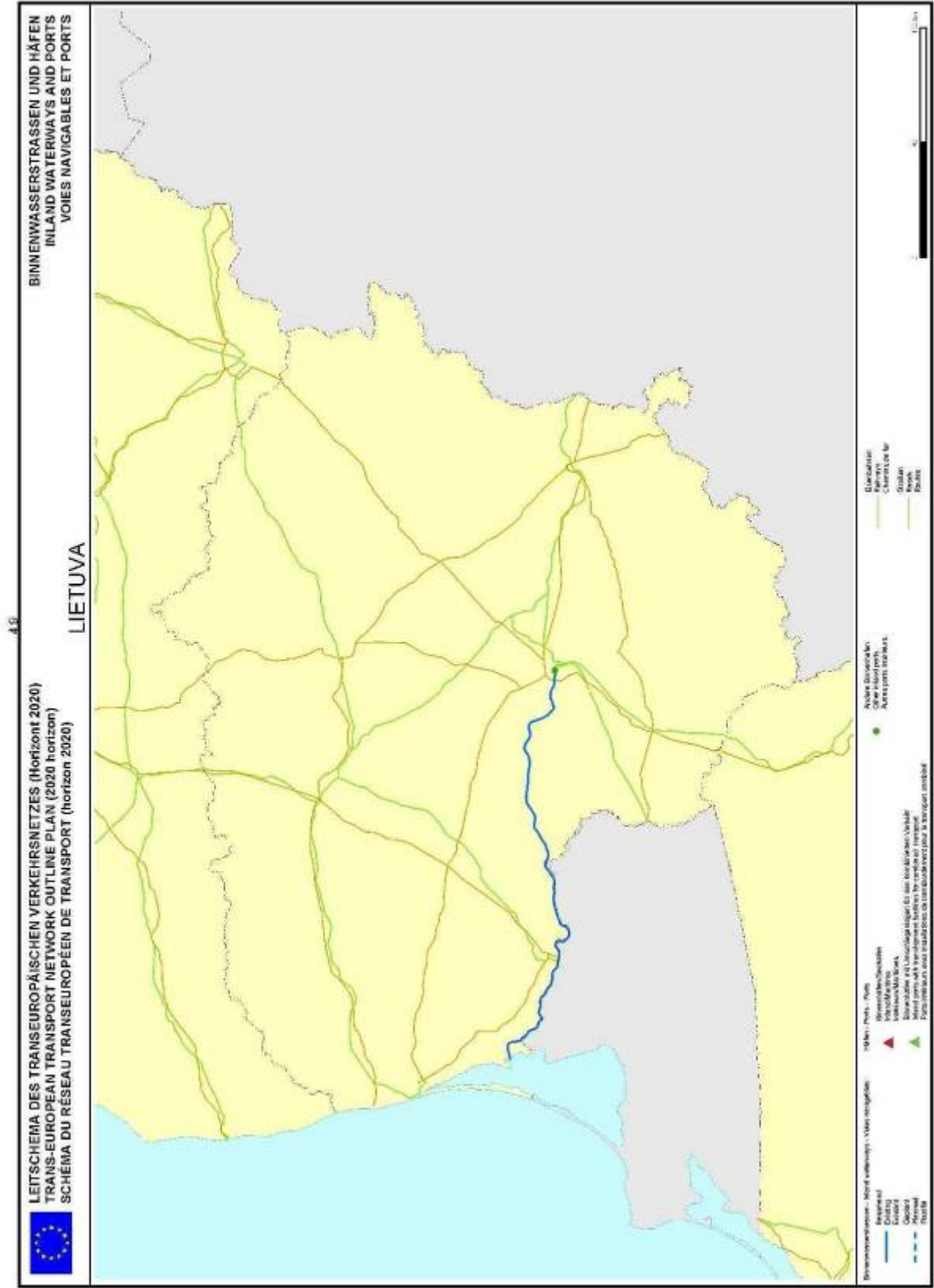


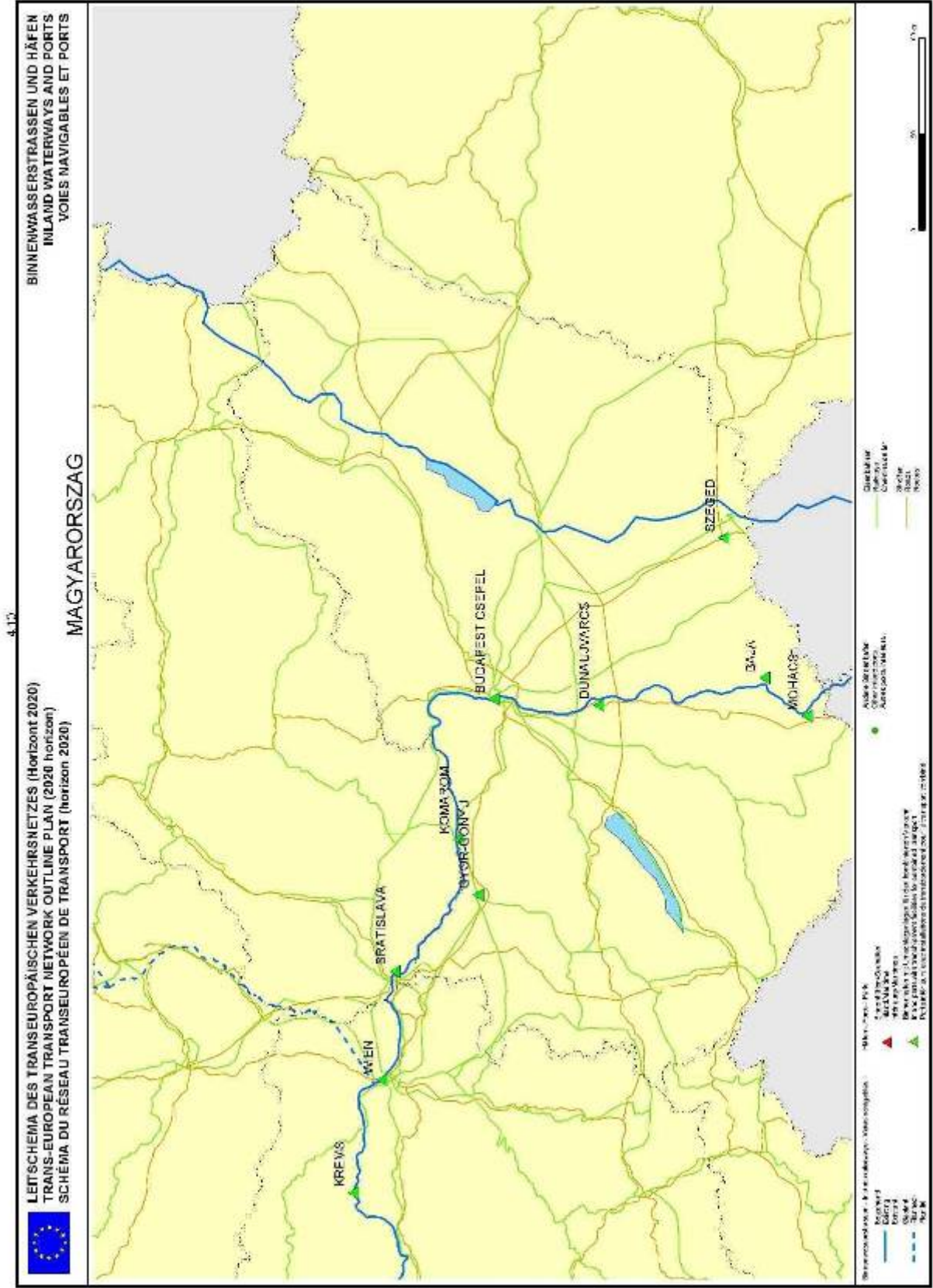


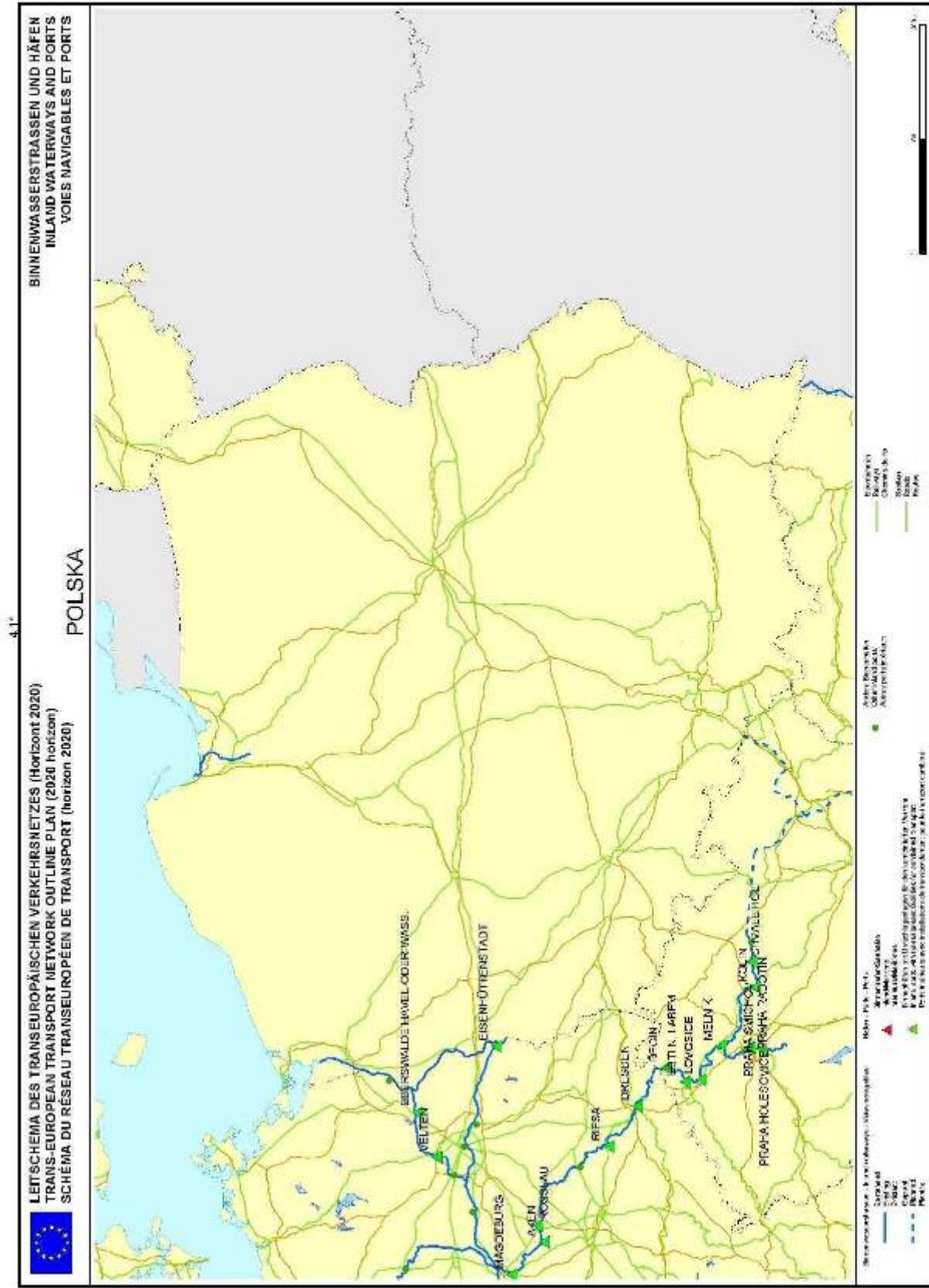




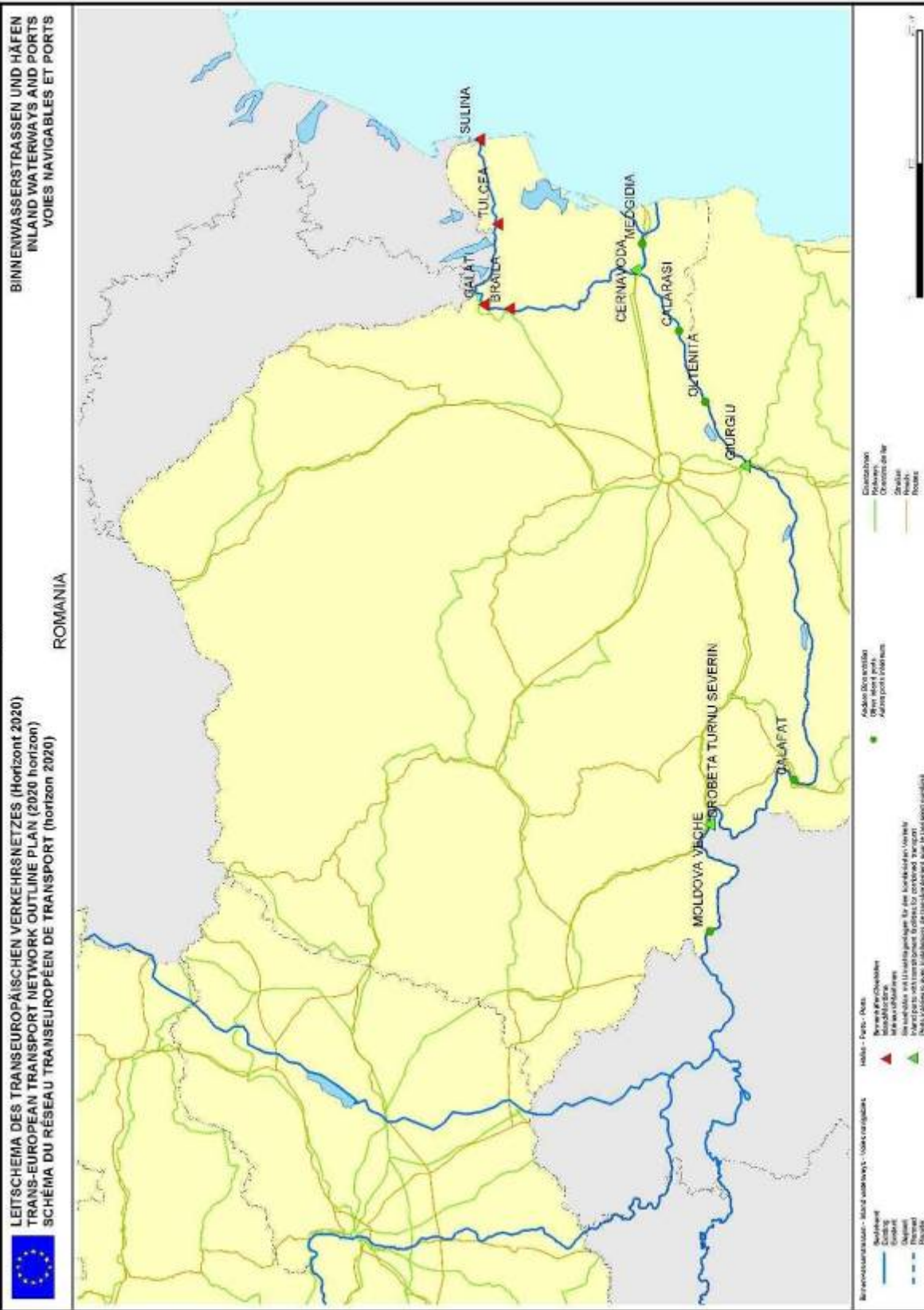


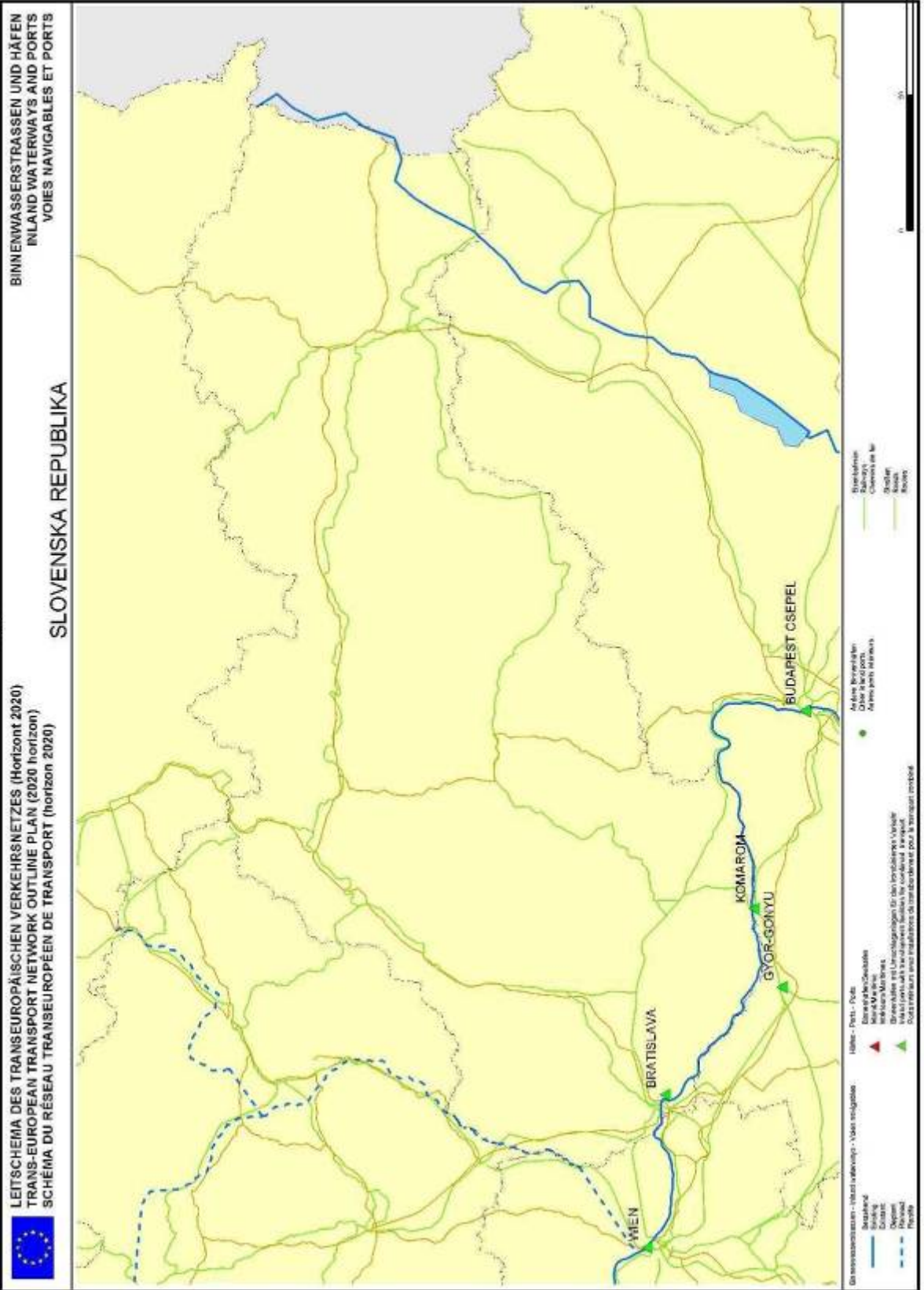






4.12





SECTION 5

SEAPORTS-CATEGORY A





BALTIC SEA



Häfen - Ports - Ports

- ▲ Seehäfen Klasse A
Seaports class A
Ports maritimes classe A
- ▲ Binnenhäfen/Seehäfen
Inland/Maritime
Intérieurs/Maritimes

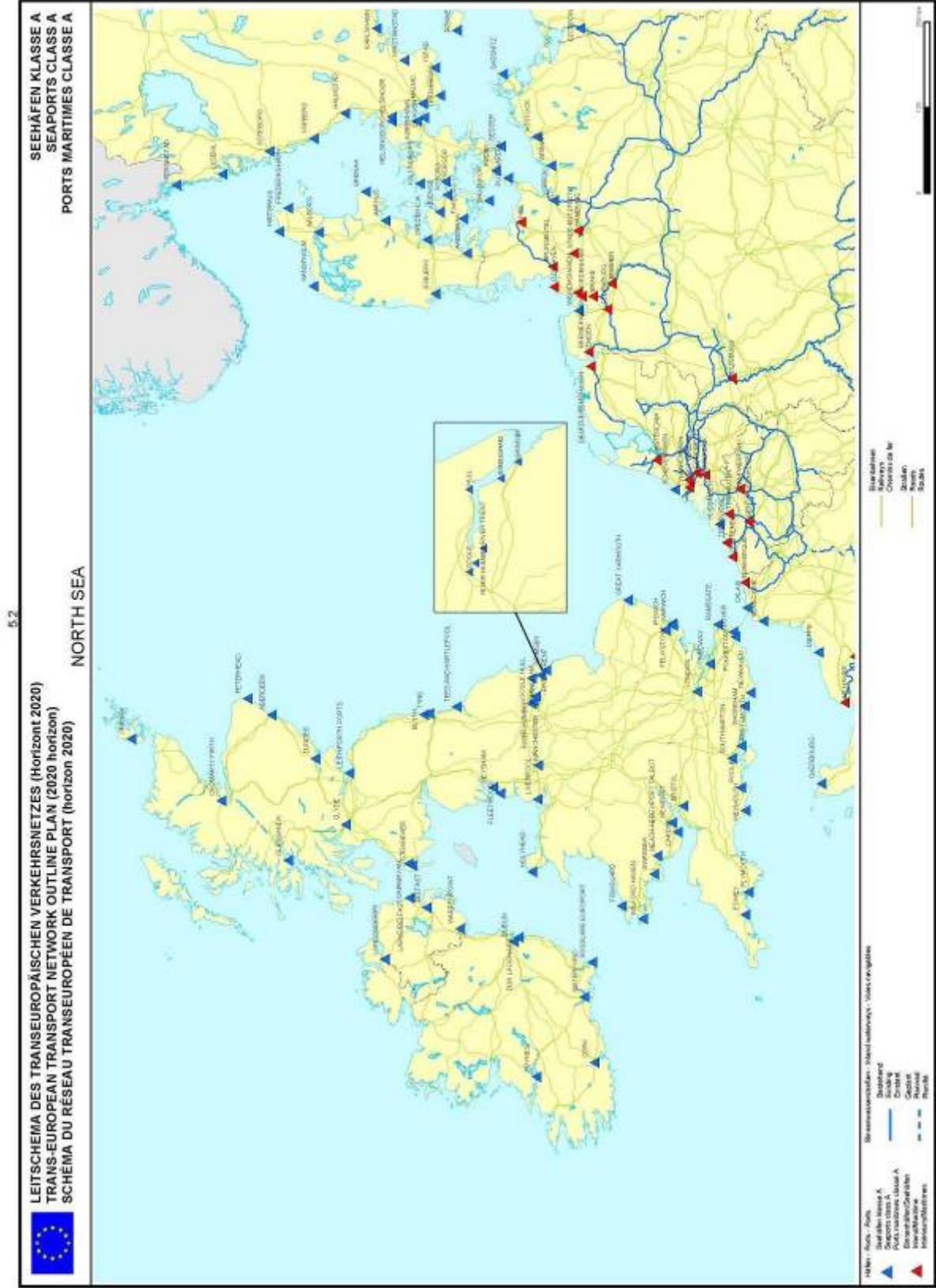
Binnenwasserstraßen - Inland waterways - Voies navigables

- Bestehend
Existing
Existant
- - - - - Geplant
Planned
Planifié

Eisenbahnen
Railways
Chemins de fer

— Straßen
Roads
Routes







LEITSHEMA DES TRANSEUROPAISCHEN VERKEHRSNETZES (Horizont 2020)
 TRANS-EUROPEAN TRANSPORT NETWORK OUTLINE PLAN (2020 horizon)
 SCHEMA DU RESEAU TRANSEUROPEEN DE TRANSPORT (horizon 2020)

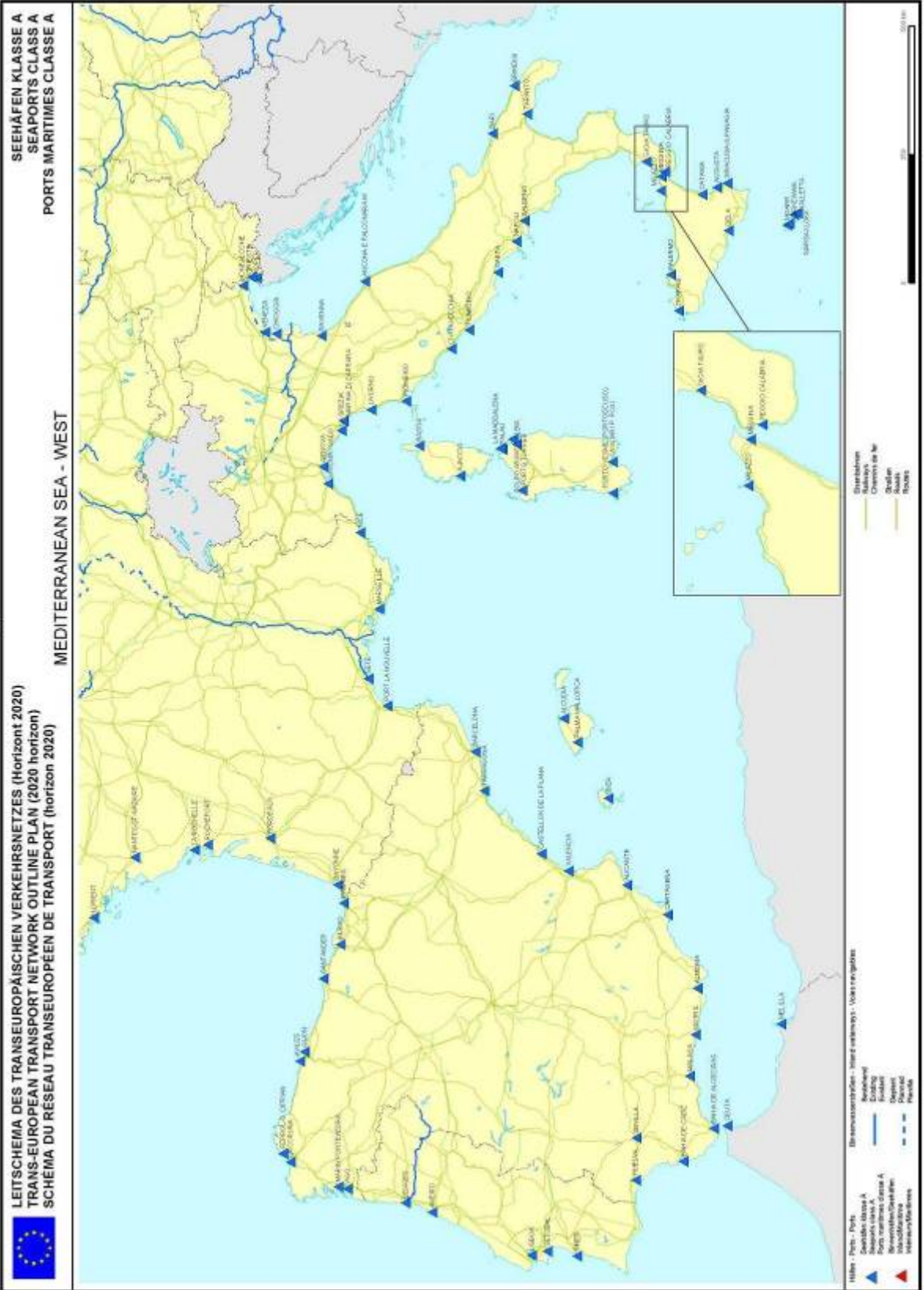
SEEHÄFEN KLASSE A
 SEAPORTS CLASS A
 PORTS MARITIMES CLASSE A

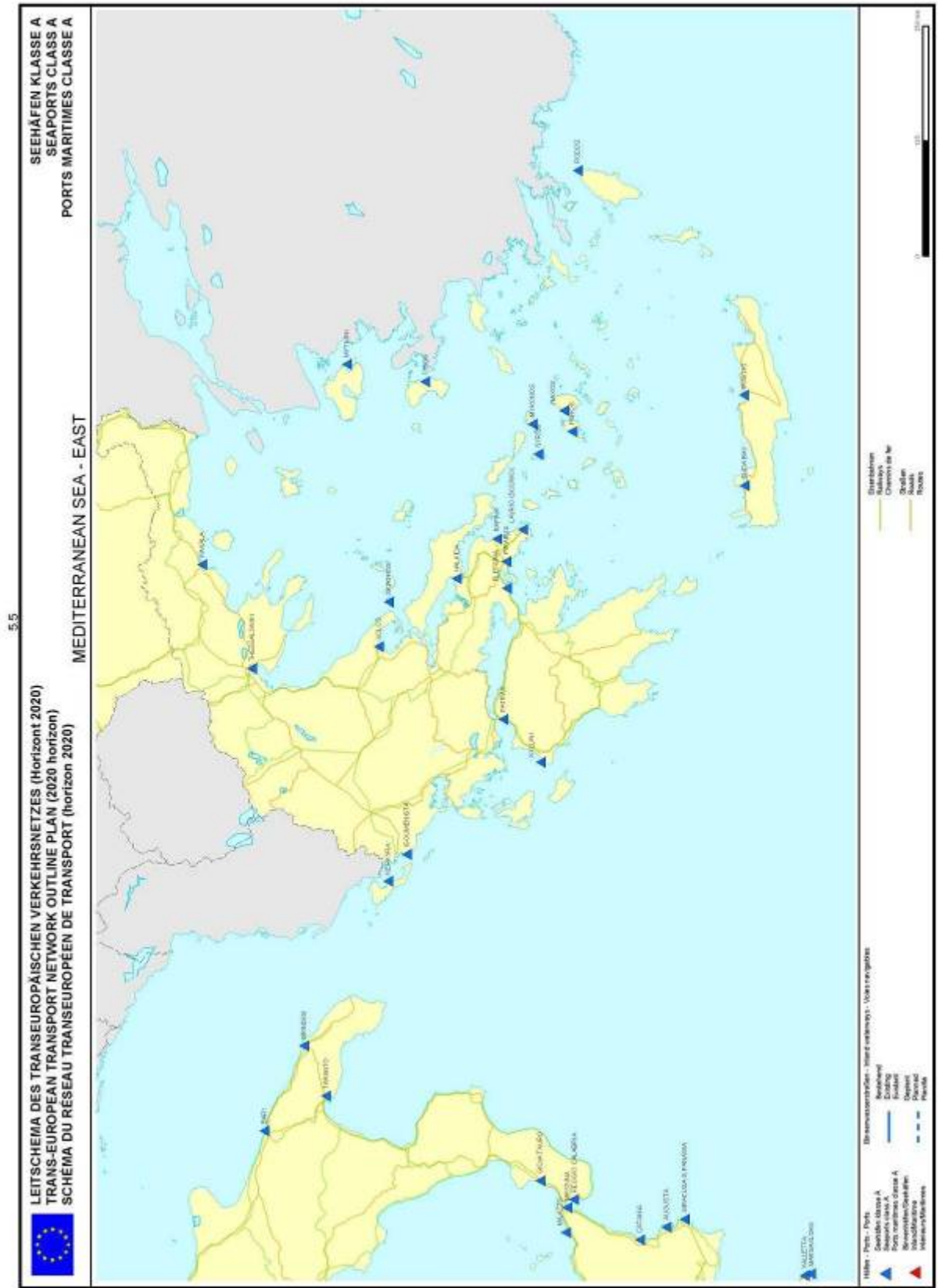
ATLANTIC



Häfen - Ports - Ports	Binnenwasserstraßen - Inland waterways - Voies navigables	Eisenbahnen Railways Chemins de fer
▲ Seehäfen Klasse A Seaports class A Ports maritimes classe A	— Bestehend Existing	— Straßen Roads Routes
▲ Binnenhäfen/Seehäfen Inland/Maritime Intérieurs/Maritimes	- - - - - Geplant Planned	











KYPROS



Häfen - Ports - Ports
▲ Seehäfen Klasse A
Seaports class A
Ports maritimes classe A
▲ Binnenhäfen/Seehäfen
Inland/Maritime
Inlands/Marittimes

Binnenwasserstraßen - Inland waterways - Voies navigables
— Bestehend
Existing
Existant
- - - Geplant
Planned
Planifié

Eisenbahnen
Railways
Chemins de fer
— Straßen
Roads
Routes



