

016853/EU XXIV.GP
Eingelangt am 28/07/09

DE

DE

DE



KOMMISSION DER EUROPÄISCHEN GEMEINSCHAFTEN

Brüssel, den 27.7.2009
KOM(2009) 391 endgültig

2009/0110 (COD)

Band IV

Vorschlag für eine

ENTSCHEIDUNG DES EUROPÄISCHEN PARLAMENTS UND DES RATES

**über gemeinschaftliche Leitlinien für den Aufbau eines
transeuropäischen Verkehrsnetzes**

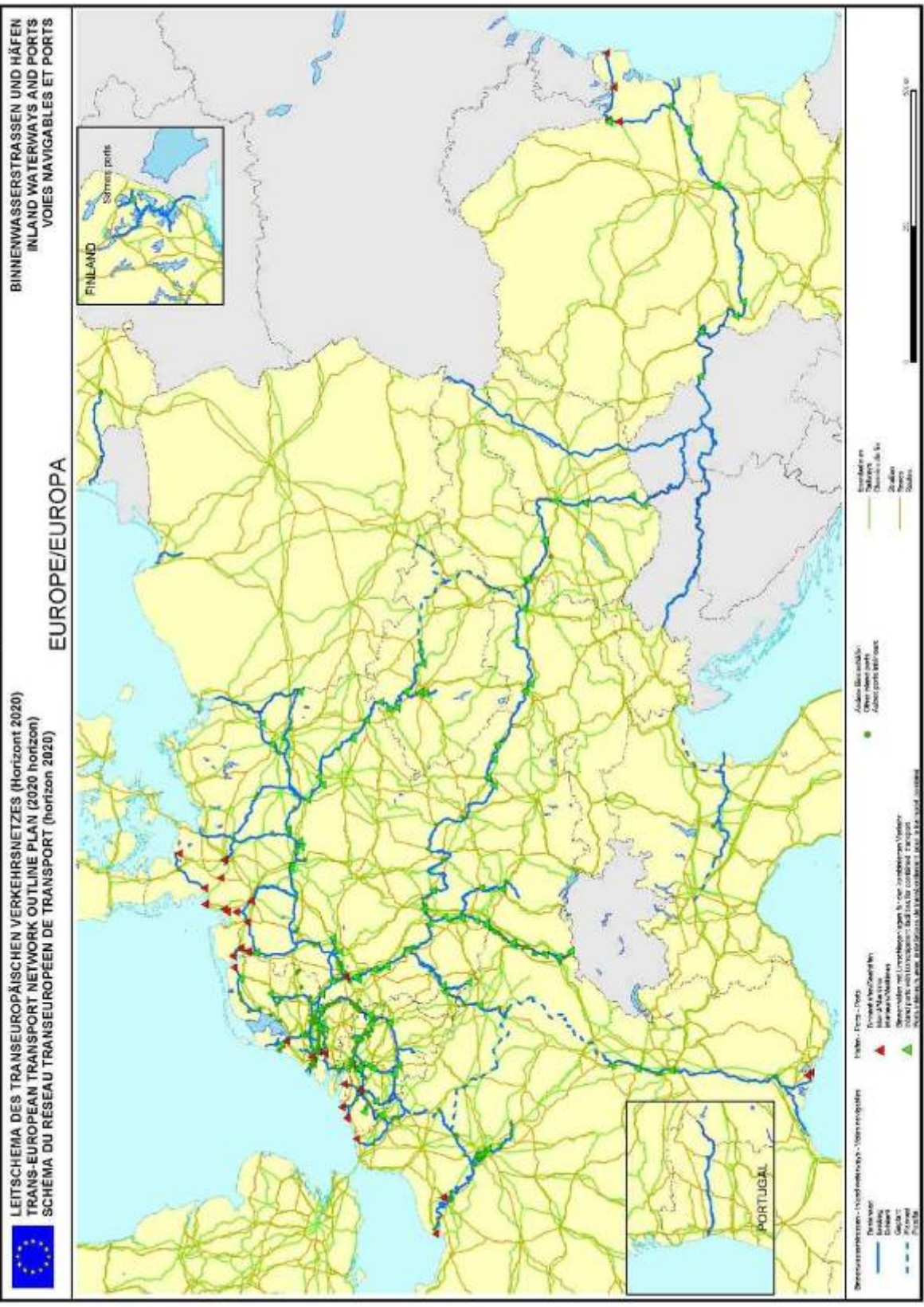
(Neufassung)

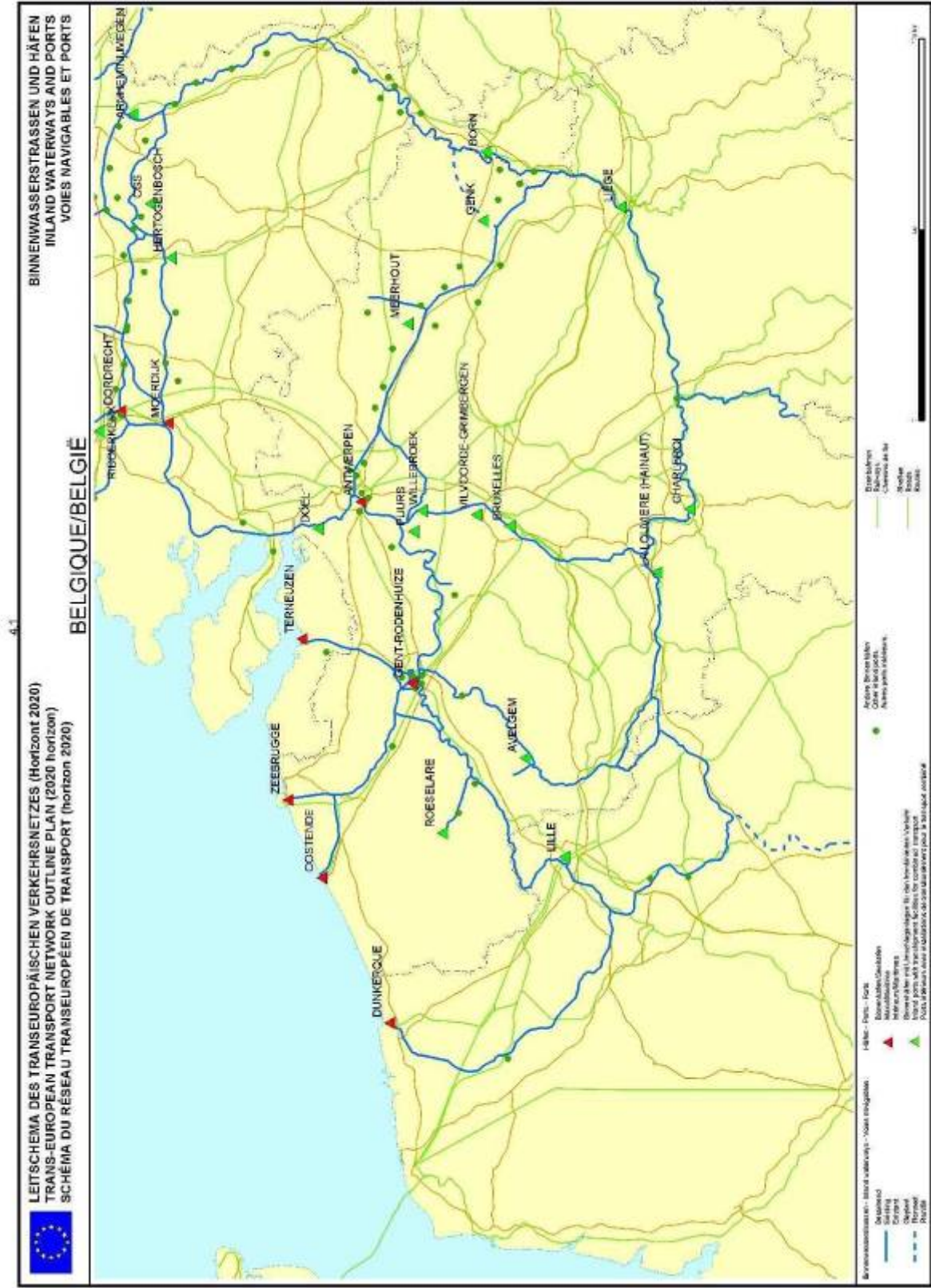
(Text von Bedeutung für den EWR)

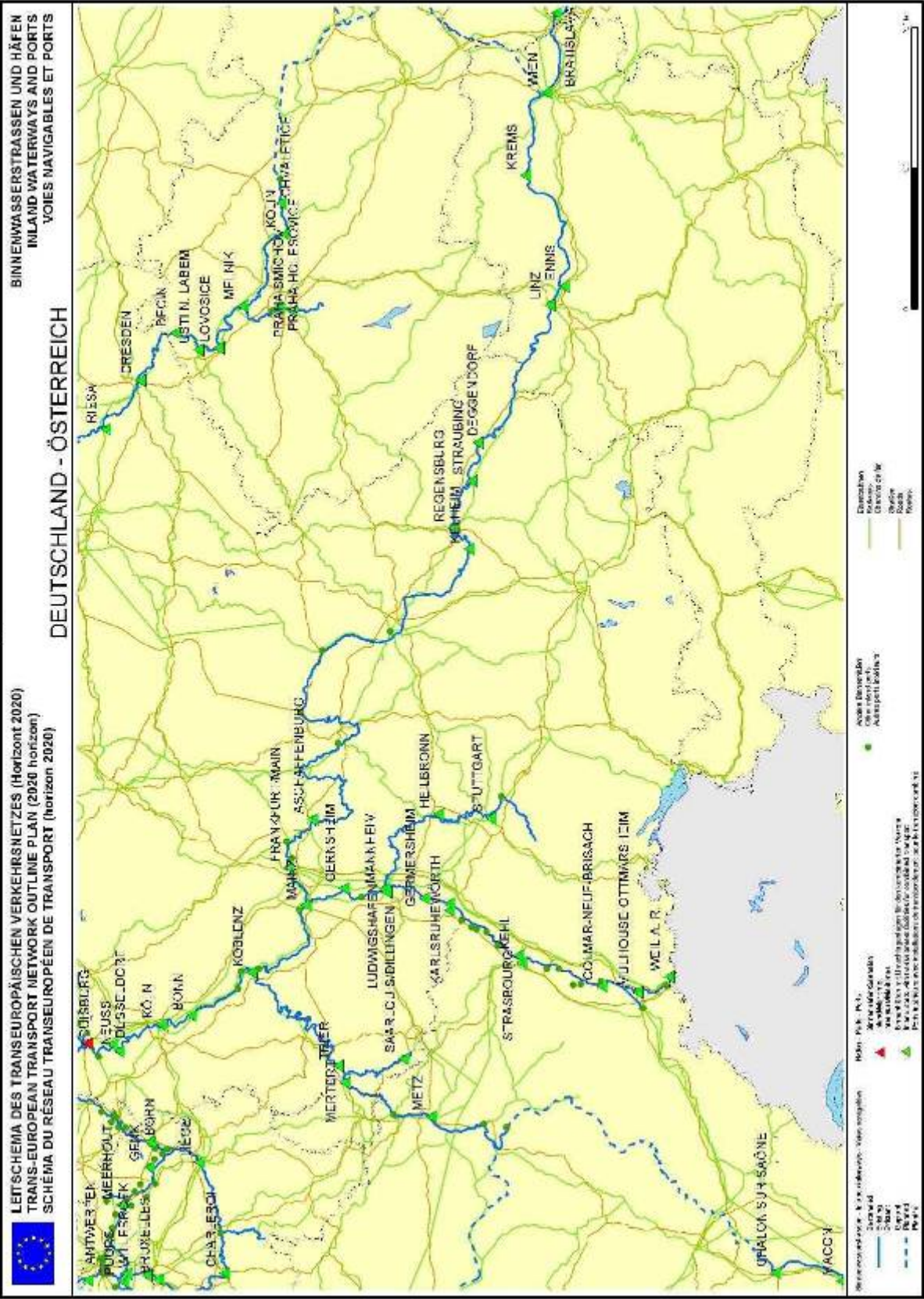
↓ neu

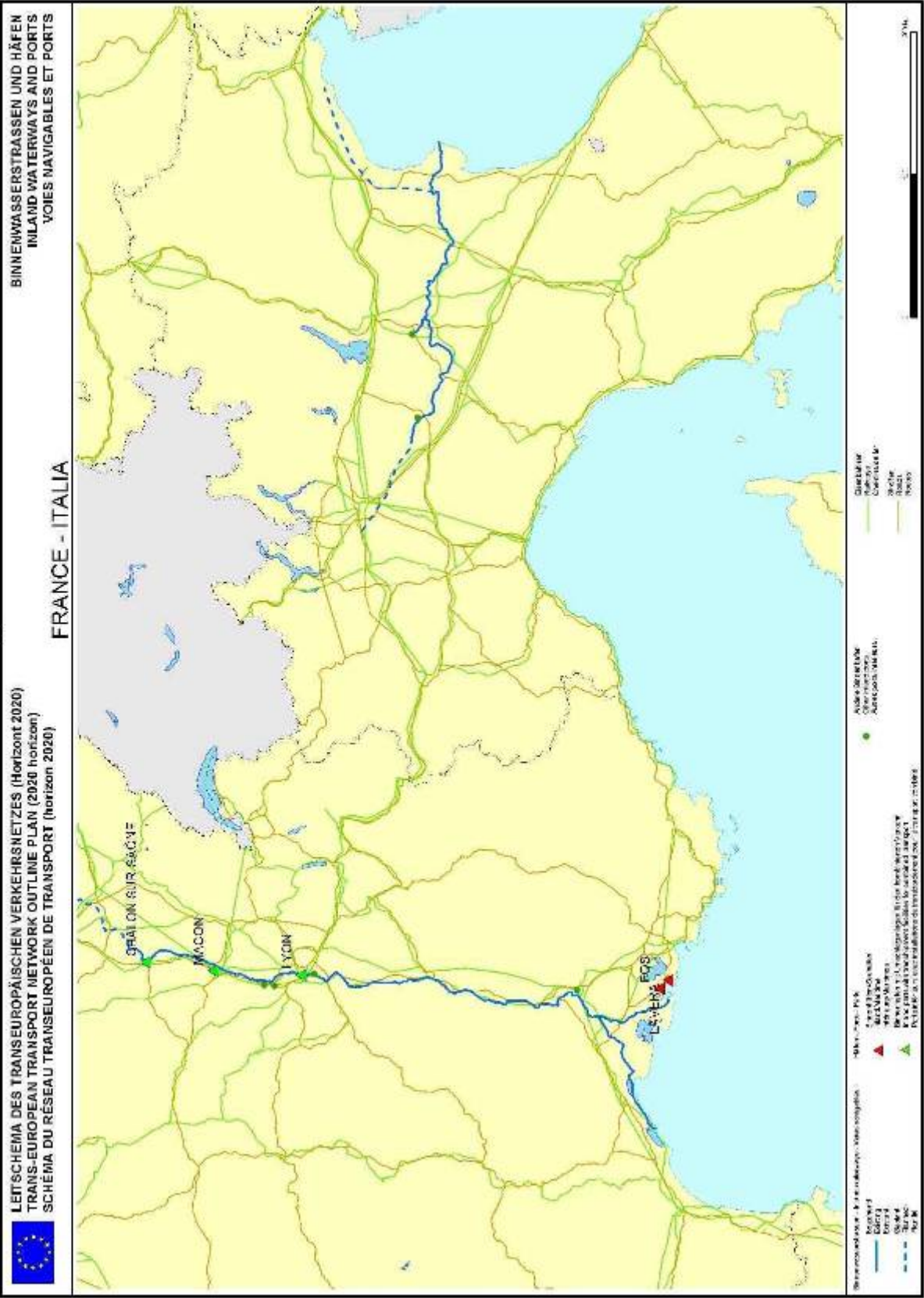
ABSCHNITT 4

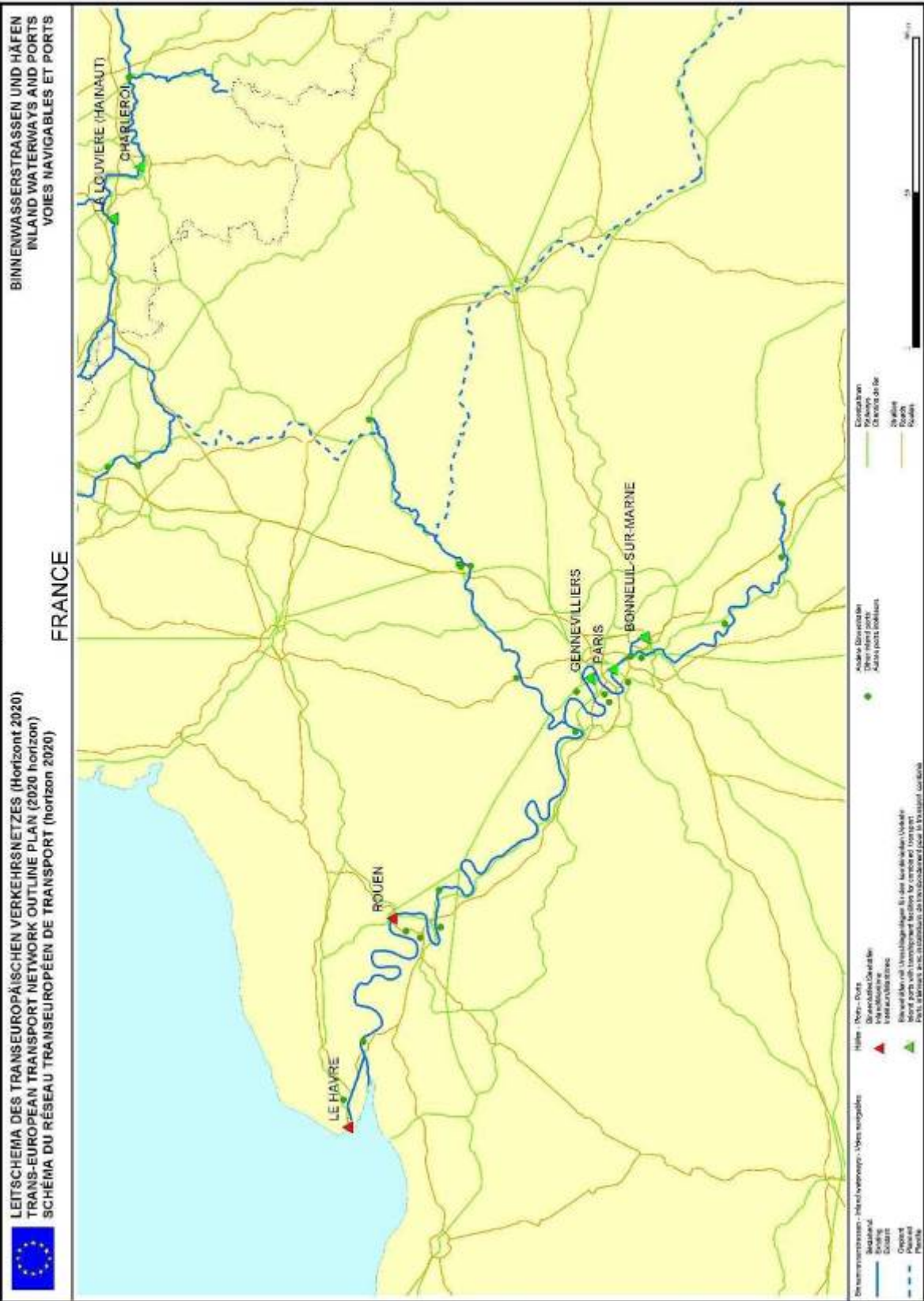
BINNENWASSERSTRASSENNETZ UND BINNENHÄFEN



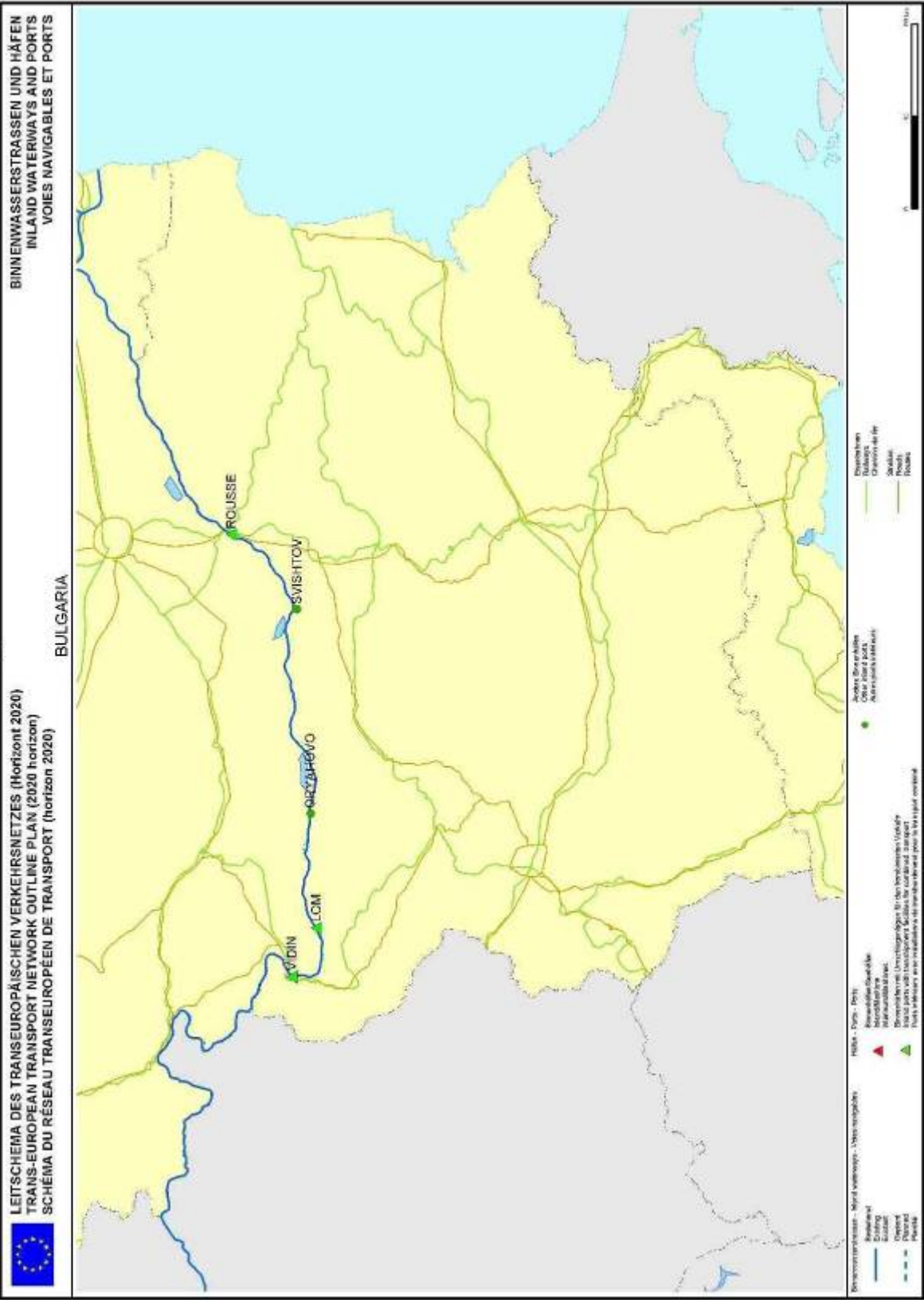


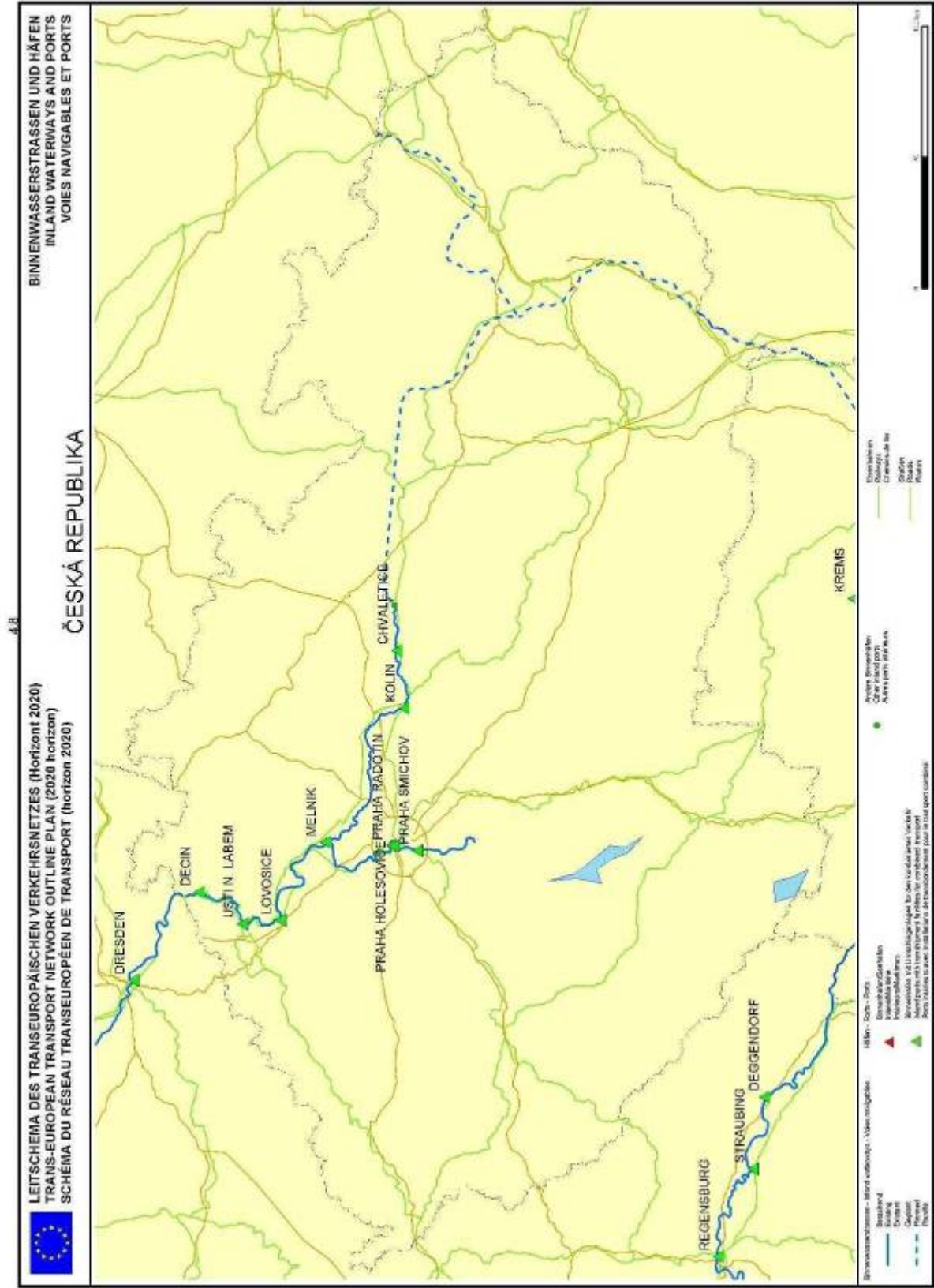


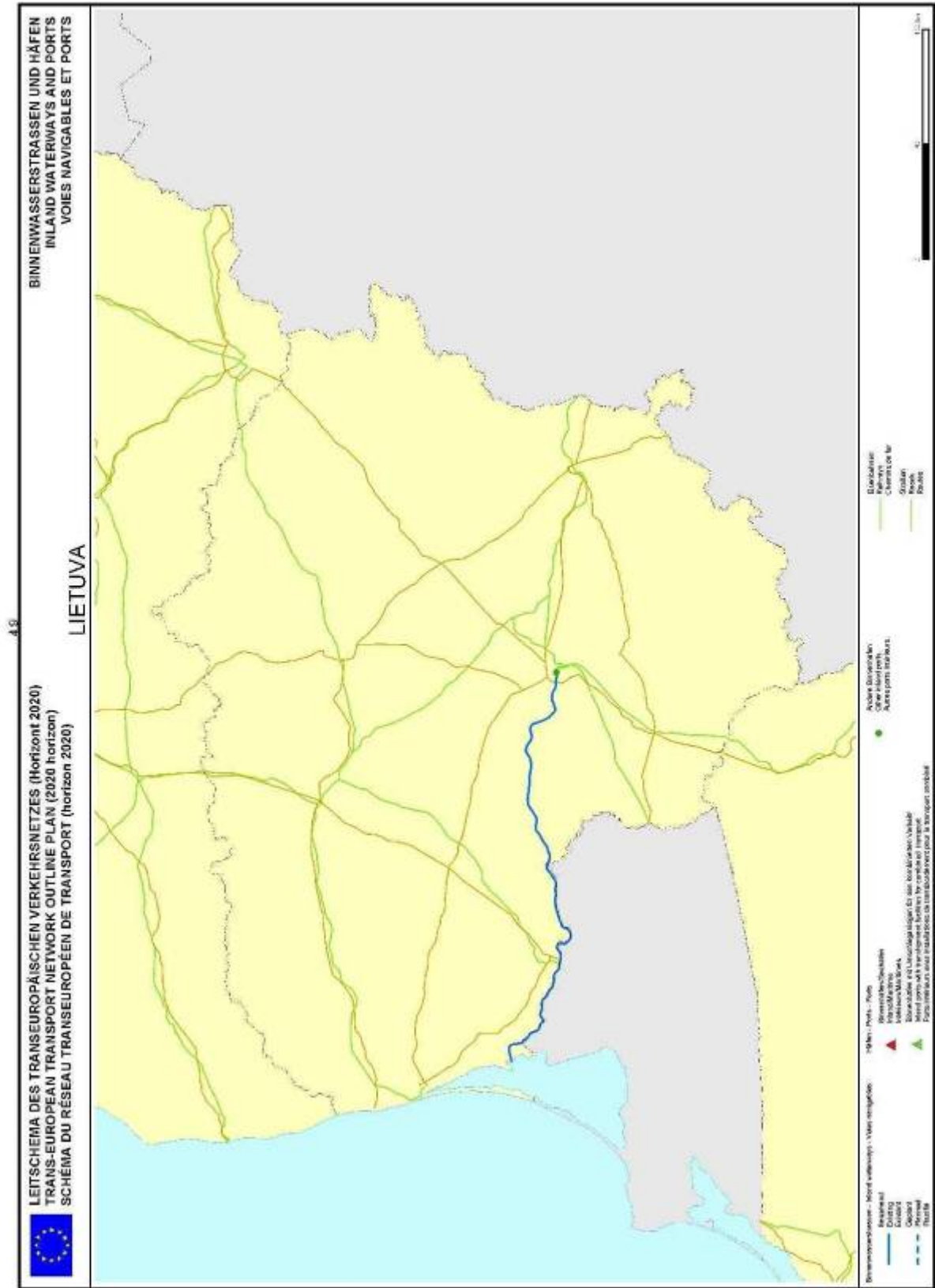


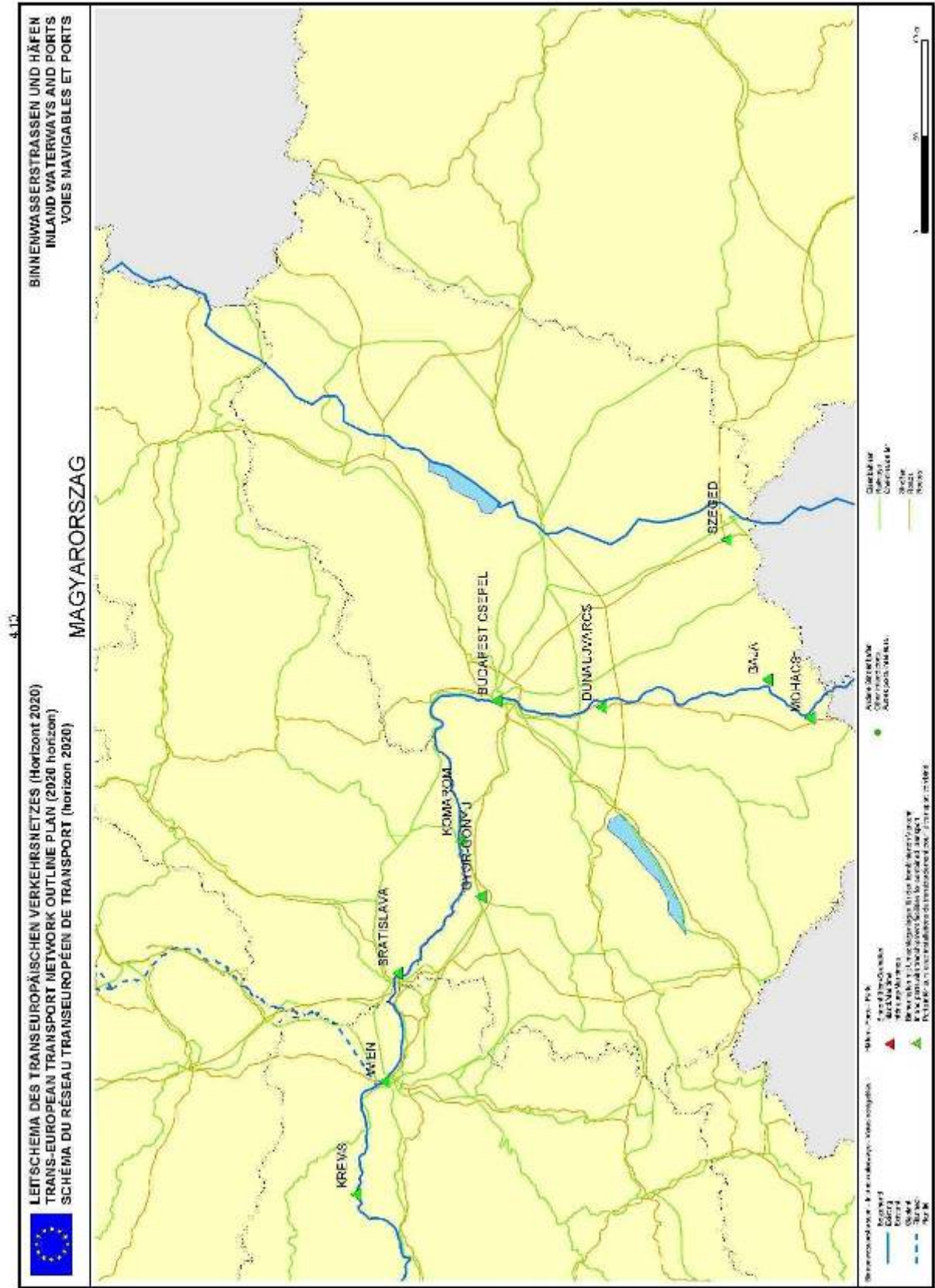


4.7

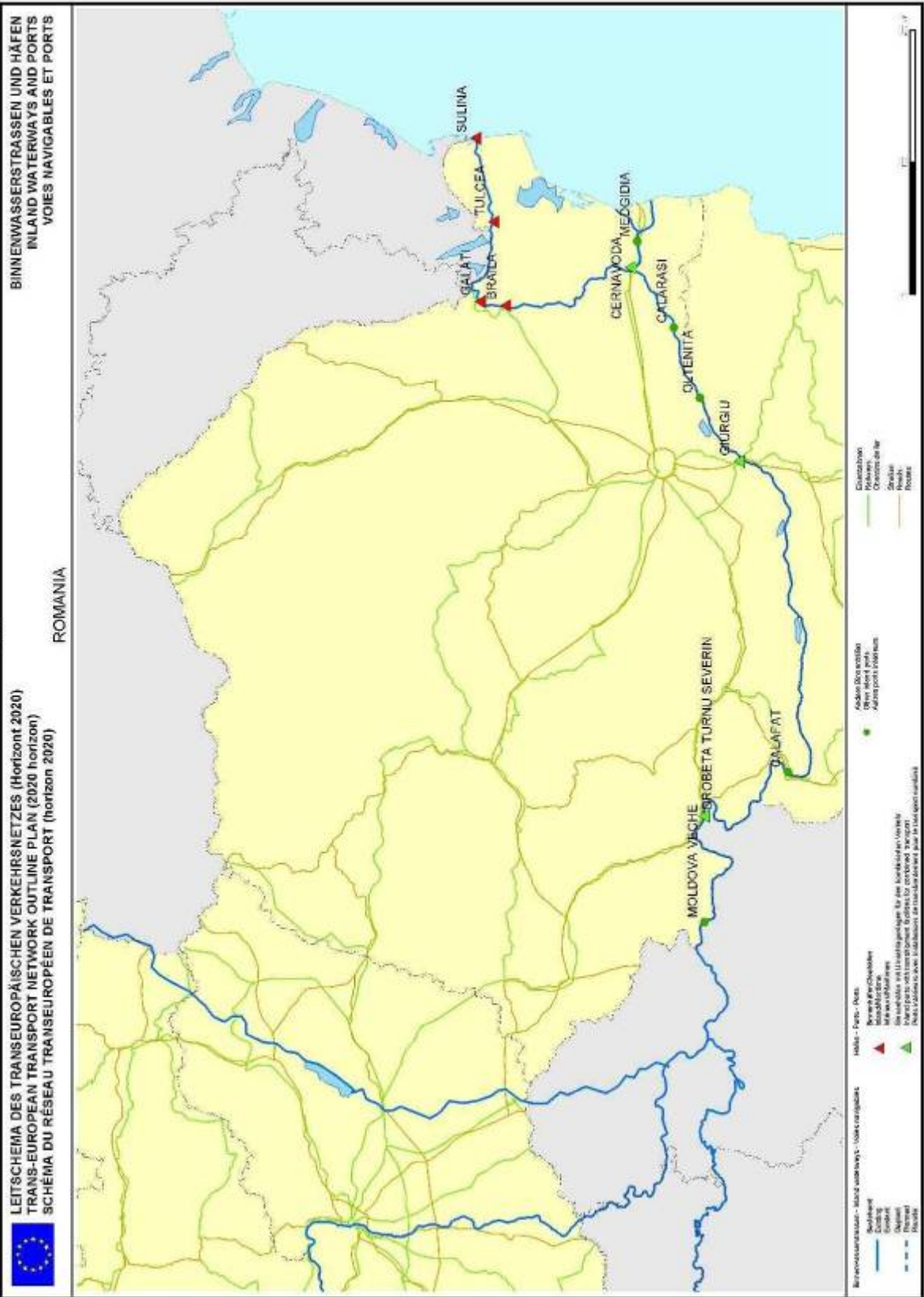


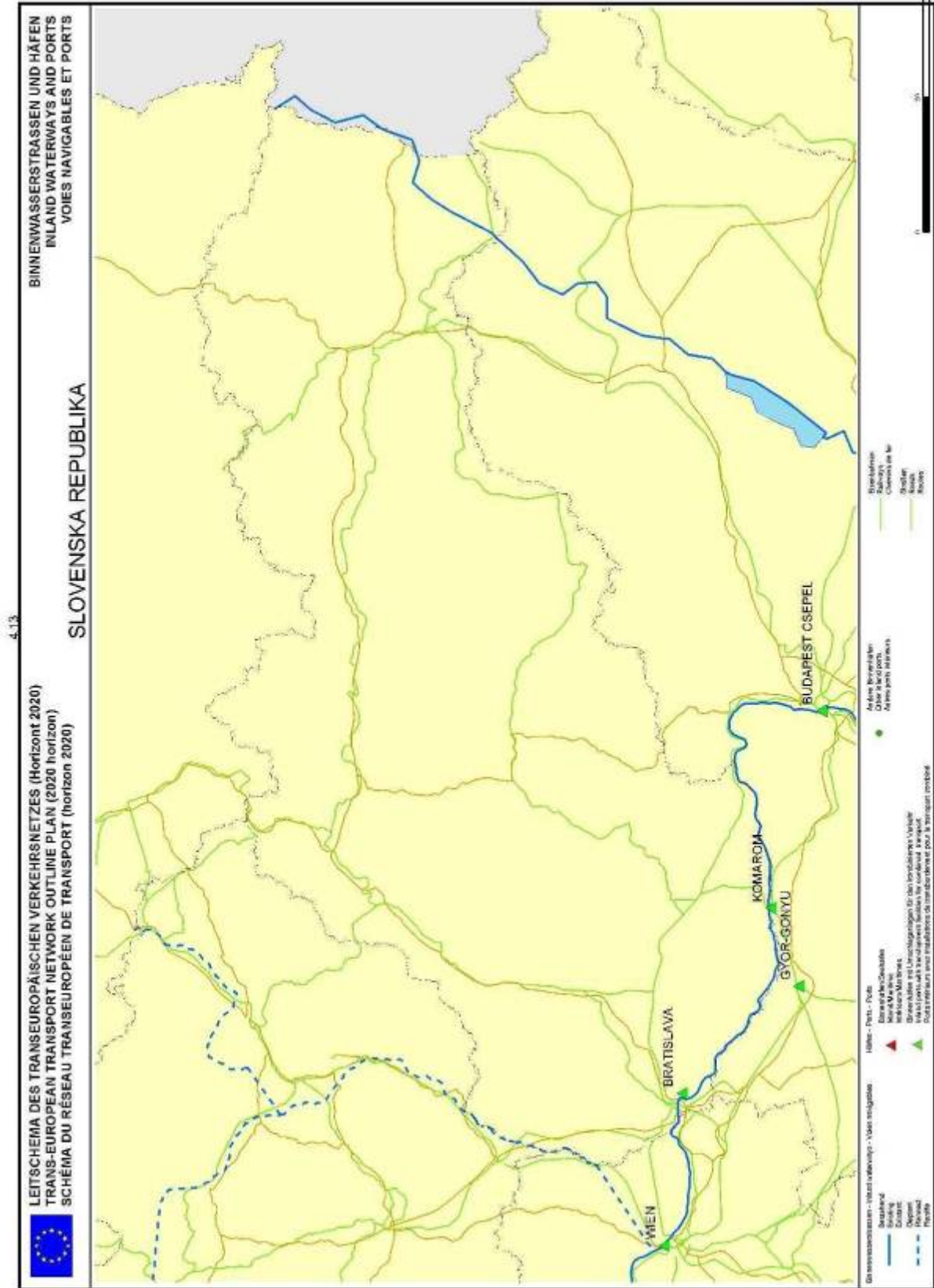






4.12





ABSCHNITT 5

SEEHÄFEN — KATEGORIE A





BALTIC SEA



Häfen - Ports - Ports

- ▲ Seehäfen Klasse A
Seaports class A
Ports maritimes classe A
- ▲ Binnenhäfen/Seehäfen
Inland/Maritime
Intérieurs/Maritimes

Binnenwasserstraßen - Inland waterways - Voies navigables

- Bestehend
Existing
Existant
- - - - - Geplant
Planned
Planifié

Eisenbahnen
Railways
Chemins de fer

Straßen
Roads
Routes





ATLANTIC

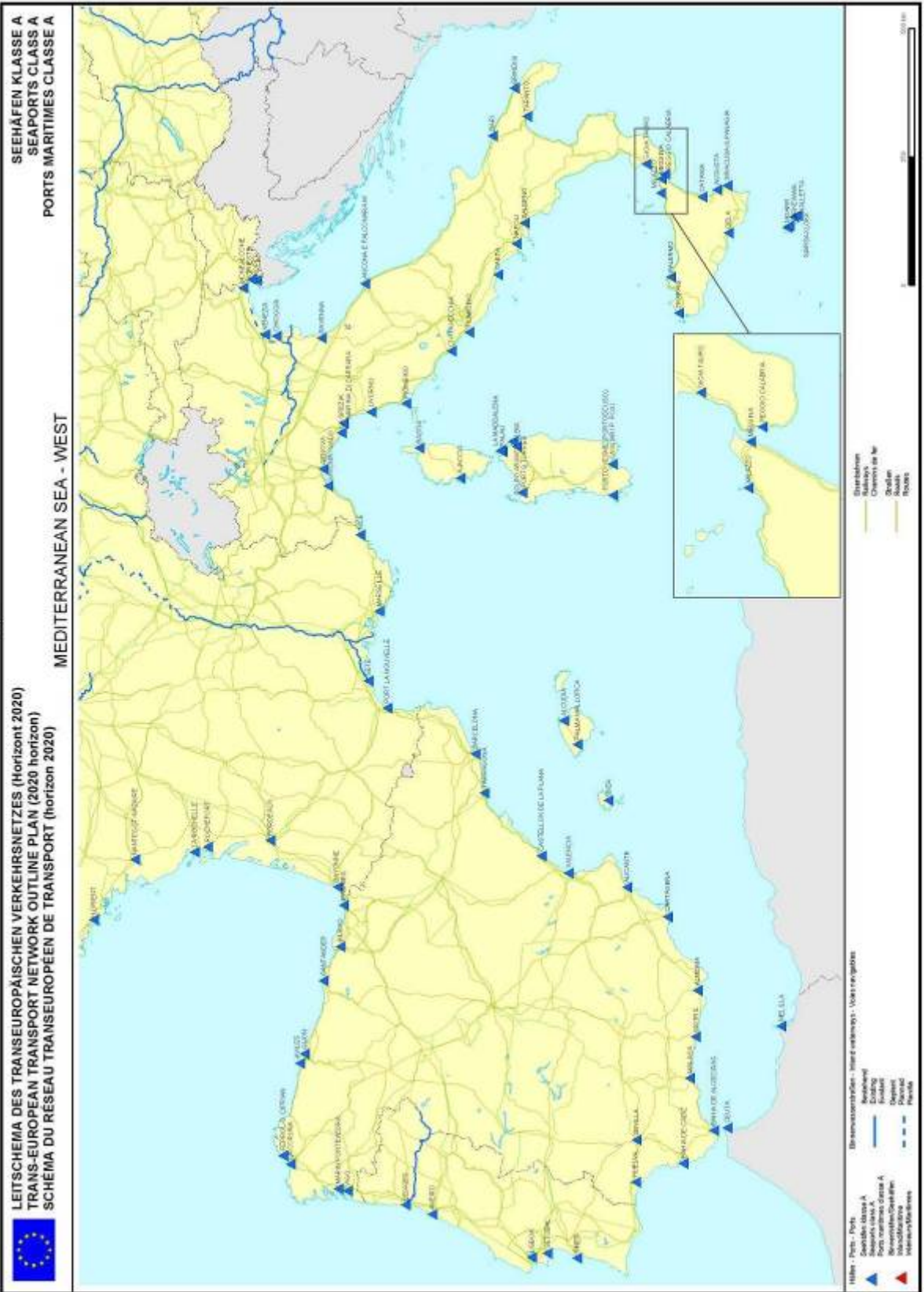


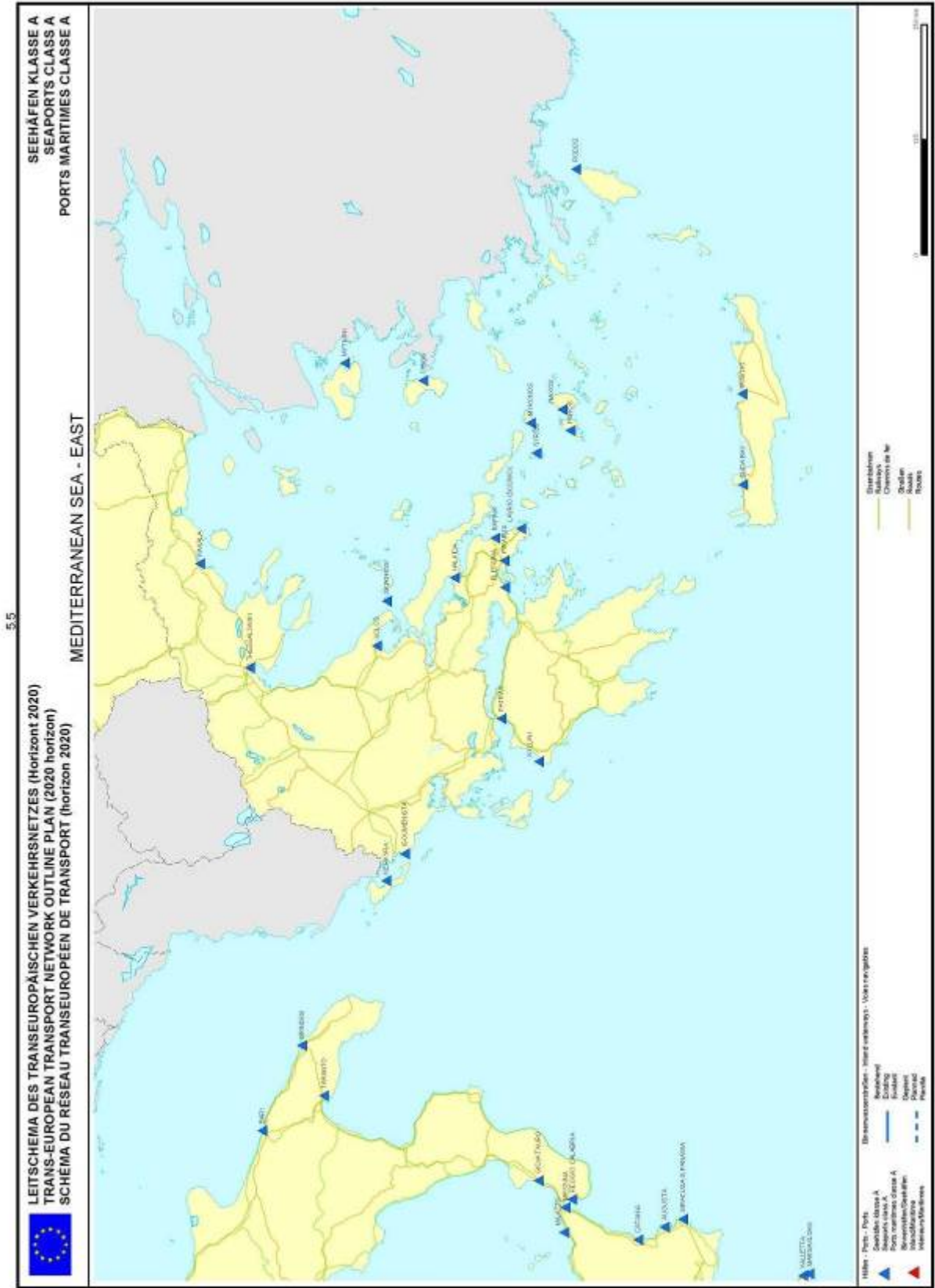
Häfen - Ports - Ports
 ▲ Seehäfen Klasse A
 Seaports class A
 Ports maritimes classe A
 ▲ Binnenhäfen/Seehäfen
 inland/Maritime
 Intérieurs/Maritimes

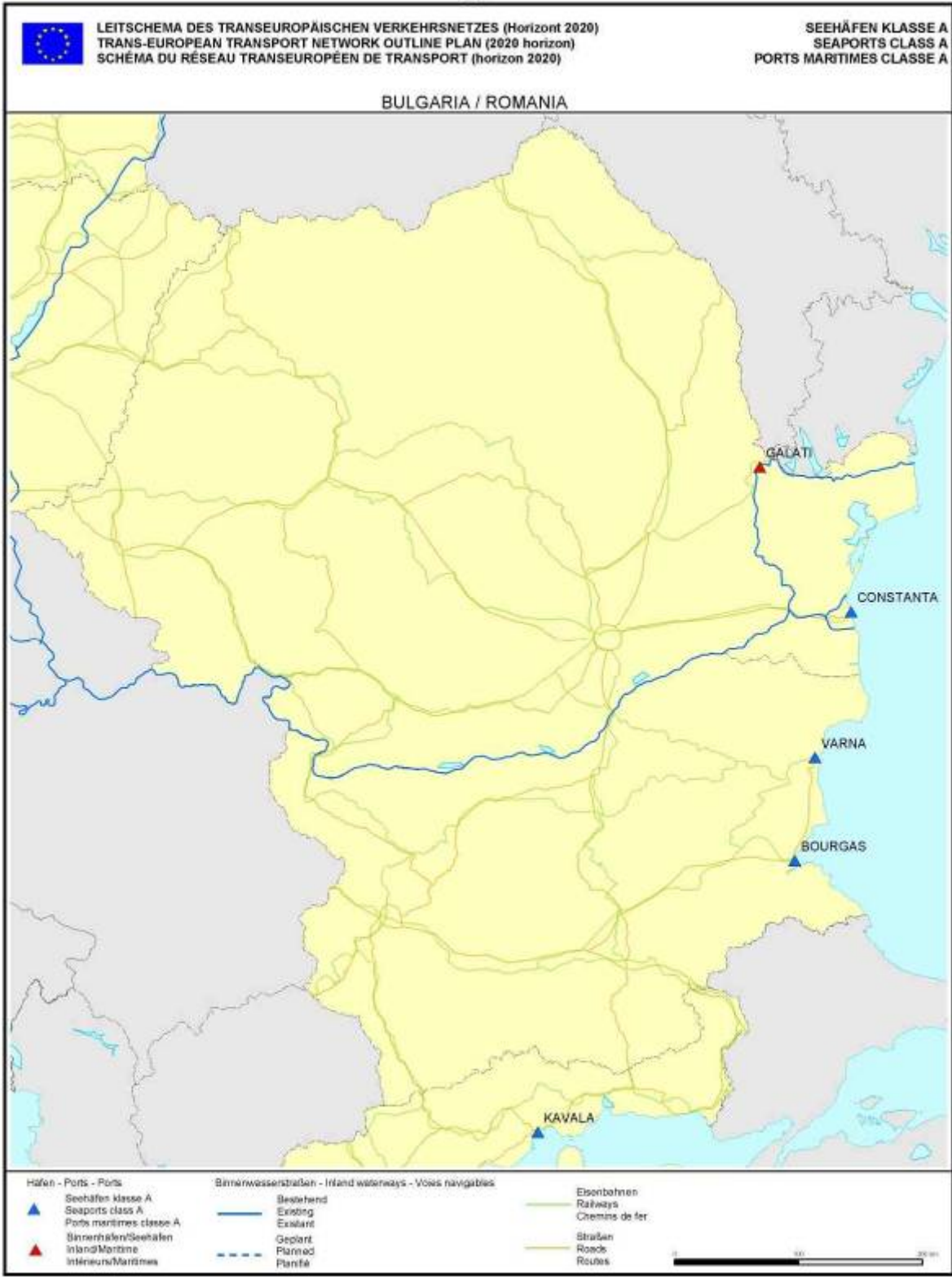
Binnenwasserstraßen - Inland waterways - Voies navigables
 — Bestehend
 Existing
 — — — — — Geplant
 Planned
 Planifié

Eisenbahnen
 Railways
 Chemins de fer
 Straßen
 Roads
 Routes











KYPROS



Häfen - Ports - Ports
▲ Seehäfen Klasse A
Seaports class A
Ports maritimes classe A
▲ Binnenhäfen/Seehäfen
Inland/Maritime
Intérieurs/Marittimes

Binnenwasserstraßen - Inland waterways - Voies navigables
— Bestehend
Existing
Existant
- - - Geplant
Planned
Planifié

Eisenbahnen
Railways
Chemins de fer
— Straßen
Roads
Routes



