



EUROPEAN COMMISSION

34937// EU XXIV GP

Brussels, 12.7.2010  
SEC(2010)840

14. Juli 2010

COMMISSION STAFF WORKING DOCUMENT

IMPACT ASSESSMENT

PART IV

*Accompanying document to the*

WHITE PAPER

on Insurance Guarantee Schemes

{COM(2010) 370}  
{SEC(2010) 841}

C75

Ans: 34886/

Teil IV

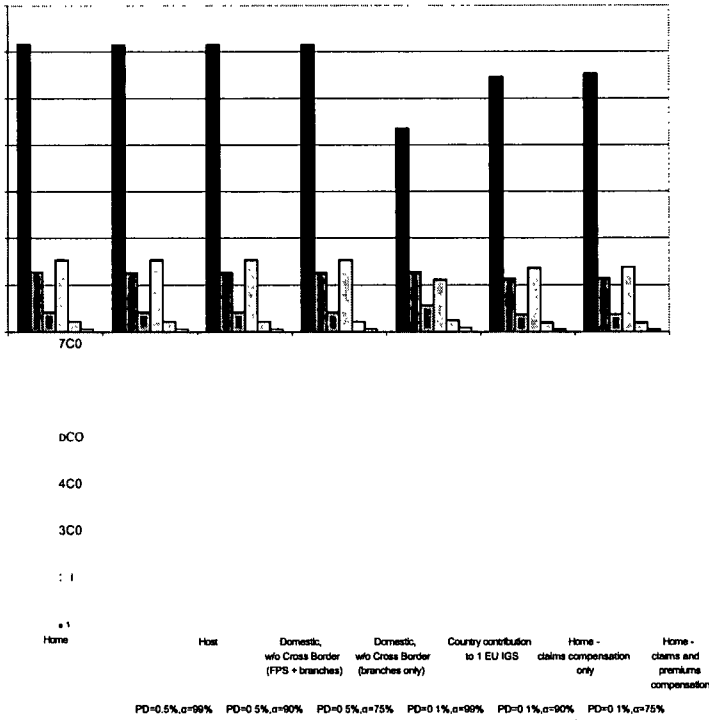
## **A6 Comparison of different policy options by country**

A6.1	Austria .....	2
A6.2	Belgium .....	3
A6.3	Bulgaria .....	4
A6.4	Cyprus .....	5
A6.5	Czech Republic .....	6
A6.6	Germany .....	7
A6.7	Denmark .....	8
A6.8	Estonia .....	9
A6.9	Spain .....	10
A6.10	Finland .....	11
A6.11	France .....	12
A6.12	United Kingdom .....	13
A6.13	Greece .....	14
A6.14	Hungary .....	15
A6.15	Ireland .....	16
A6.16	Iceland .....	17
A6.17	Italy .....	18
A6.18	Lithuania .....	19
A6.19	Luxembourg .....	20
A6.20	Latvia .....	21
A6.21	Malta .....	22
A6.22	The Netherlands .....	23
A6.23	Norway .....	24

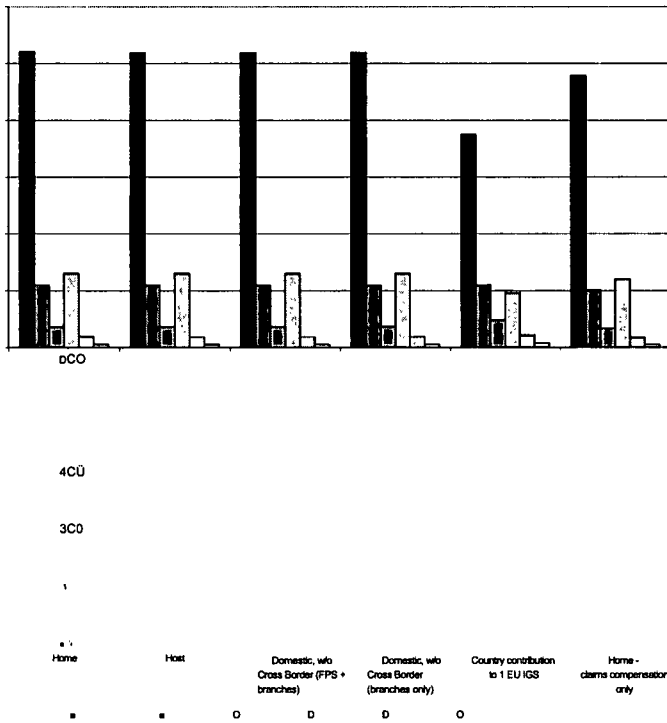
A6.24	Poland .....	25
A6.25	Portugal .....	26
A6.26	Romania .....	27
A6.27	Sweden .....	28
A6.28	Slovenia .....	29
A6.29	Slovakia .....	30

# A6.1 Austria

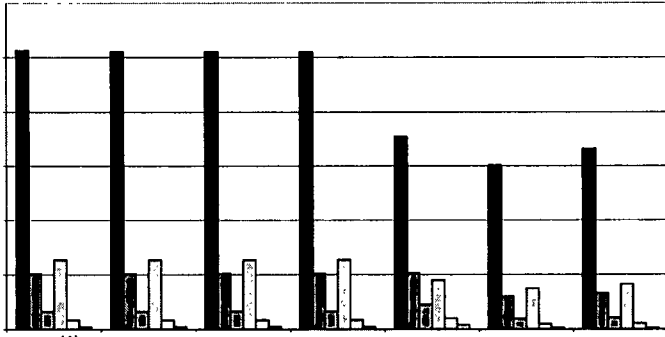
Austria - Total Insurance



Austria - Life Insurance



Austria - Non-Life Insurance



1A)

11

W

W

E

Home

Host

Domestic,  
w/o Cross Border  
(FPS + branches)

Domestic,  
w/o Cross Border  
(branches only)

Country contribution  
to 1 EU IGS

Home -  
claims compensation  
only

Home -  
claims and  
premiums  
compensation

PD=0.5%, $\alpha$ =99%

PD=0.5%, $\alpha$ =90%

PD=0.5%, $\alpha$ =75%

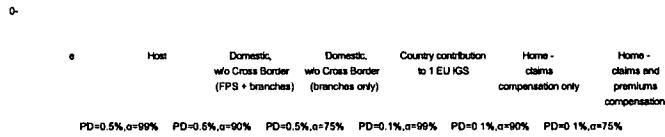
PD=0.1%, $\alpha$ =99%

PD=0.1%, $\alpha$ =90%

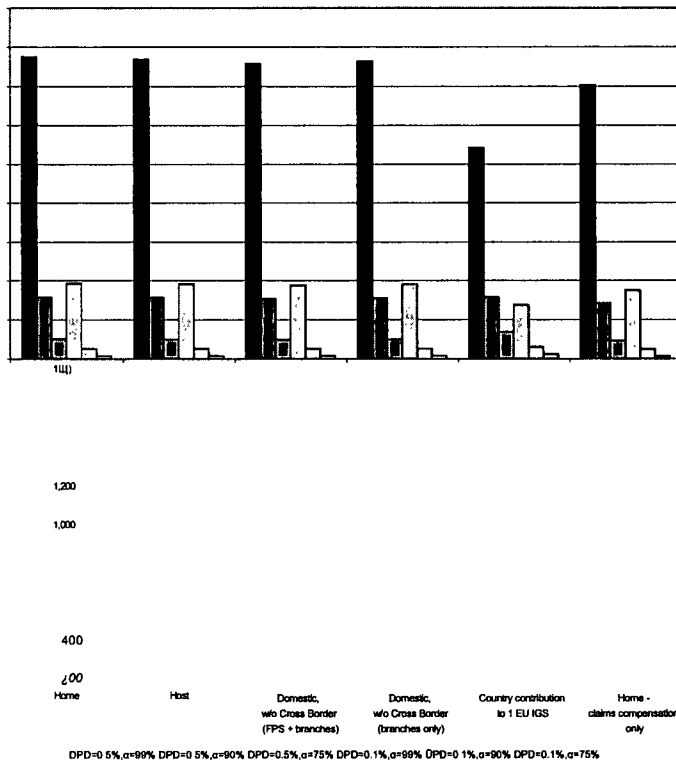
PD=0.1%, $\alpha$ =75%

## A6.2 Belgium

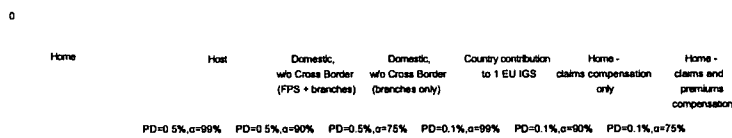
Belgium - Total Insurance



Belgium - Life Insurance



Belgium - Non-Life Insurance

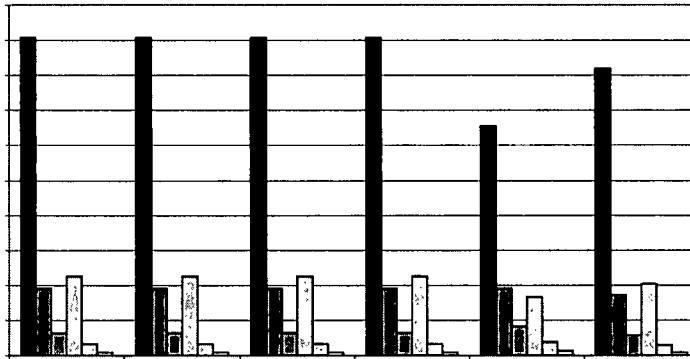


## A6.3 Bulgaria

### Bulgaria - Total Insurance

Home	Host	Domestic, w/o Cross Border (FPS + branches)	Domestic, w/o Cross Border (branches only)	Country contribution to 1 EU IGS	Home - claims compensation only	Home - claims and premiums compensation
PD=0.5%, $\alpha=99\%$	PD=0.5%, $\alpha=90\%$	PD=0.5%, $\alpha=75\%$	PD=0.1%, $\alpha=99\%$	PD=0.1%, $\alpha=90\%$	PD=0.1%, $\alpha=75\%$	

### Bulgaria - Life Insurance



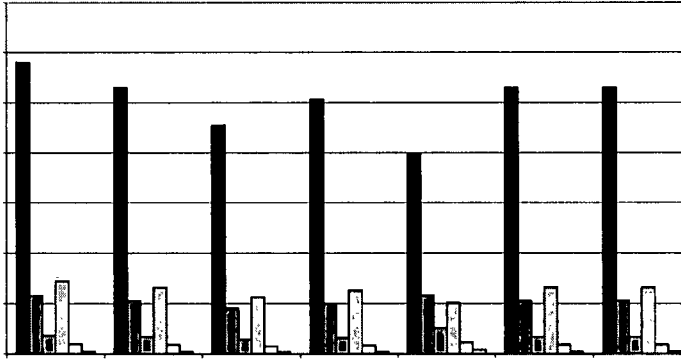
Home	Host	Domestic, w/o Cross Border (FPS + branches)	Domestic, w/o Cross Border (branches only)	Country contribution to 1 EU IGS	Home - claims compensation only
DPD=0.5%, $\alpha=99\%$	DPD=0.5%, $\alpha=90\%$	DPD=0.5%, $\alpha=75\%$	DPD=0.1%, $\alpha=99\%$	DPD=0.1%, $\alpha=90\%$	DPD=0.1%, $\alpha=75\%$

### Bulgaria - Non-Life Insurance

Home	Host	Domestic, w/o Cross Border (FPS + branches)	Domestic, w/o Cross Border (branches only)	Country contribution to 1 EU IGS	Home - claims compensation only	Home - claims and premiums compensation
•	•	D	O	D	D	

## A6.4 Cyprus

Cyprus - Total Insurance



35  
30  
25  
20

Home Host Domestic, w/o Cross Border (FPS + branches) Domestic, w/o Cross Border (branches only) Country contribution to 1 EU IGS Home - claims compensation only Home - claims compensation and premiums  
 PD=0.5%, $\alpha$ =99% PD=0.5%, $\alpha$ =80% PD=0.5%, $\alpha$ =75% PD=0.1%, $\alpha$ =99% PD=0.1%, $\alpha$ =90% PD=0.1%, $\alpha$ =75%

Cyprus - Life Insurance

30  
20  
15

Home Host Domestic, w/o Cross Border (FPS + branches) Domestic, w/o Cross Border (branches only) Country contribution to 1 EU IGS Home - claims compensation only  
 DPD=0.5%, $\alpha$ =99% DPD=0.5%, $\alpha$ =90% DPD=0.5%, $\alpha$ =75% DPD=0.1%, $\alpha$ =99% DPD=0.1%, $\alpha$ =90% DPD=0.1%, $\alpha$ =75%

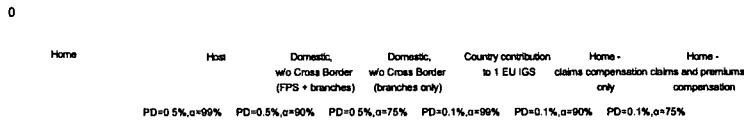
Cyprus - Non-Life Insurance

Home Host Domestic, w/o Cross Border (FPS + branches) Domestic, w/o Cross Border (branches only) Country contribution to 1 EU IGS Home - claims compensation only Home - claims compensation and premiums  
 PD=0.5%, $\alpha$ =99% PD=0.5%, $\alpha$ =90% PD=0.5%, $\alpha$ =75% PD=0.1%, $\alpha$ =99% PD=0.1%, $\alpha$ =90% PD=0.1%, $\alpha$ =75%

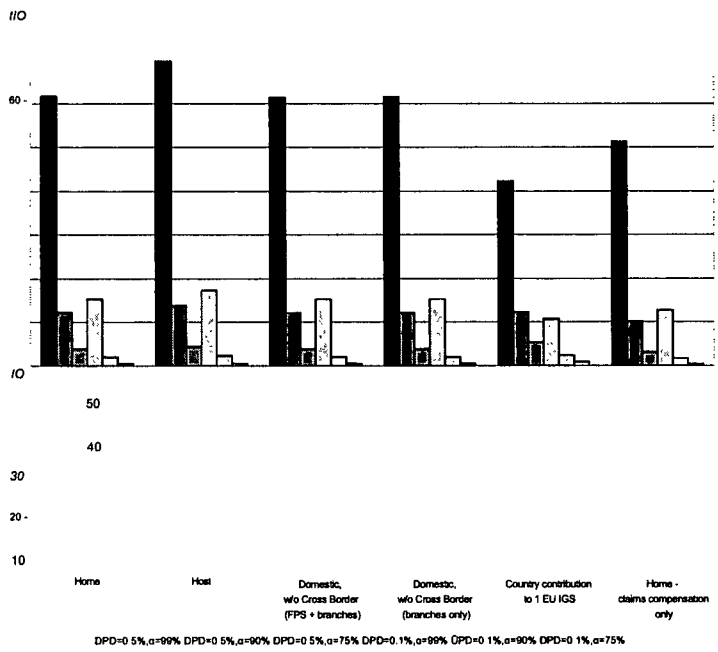


## A6.5 Czech Republic

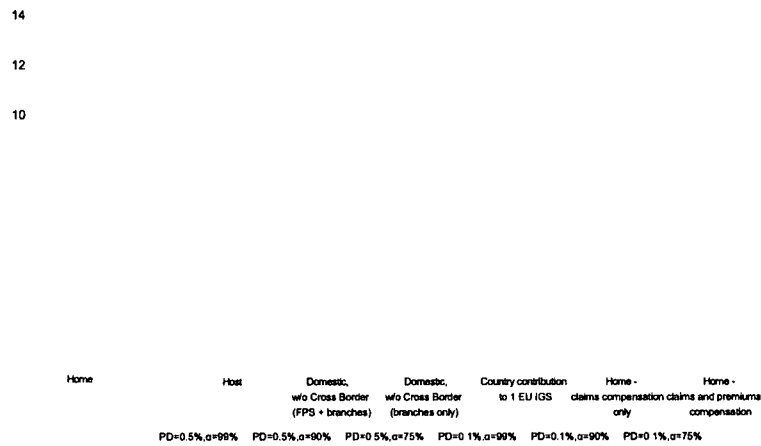
### Czech Republic - Total Insurance



### Czech Republic - Life Insurance

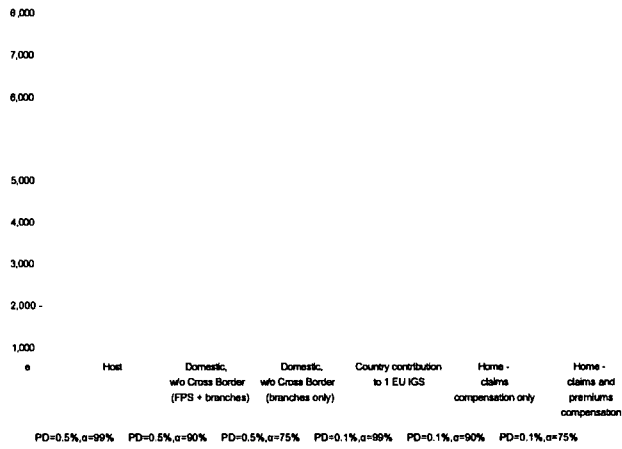


### Czech Republic - Non-Life Insurance

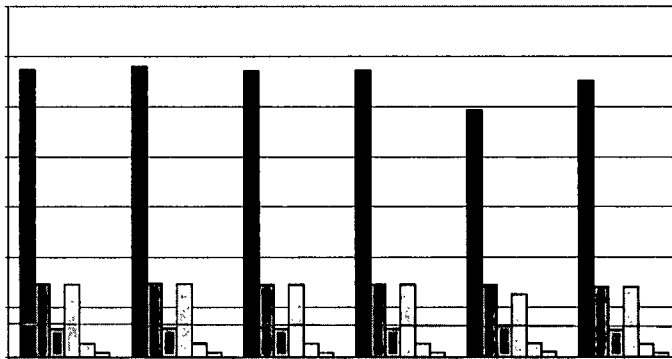


## A6.6 Germany

Germany - Total Insurance



Germany- Life Insurance



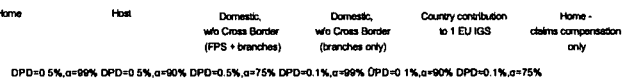
1000

4,000

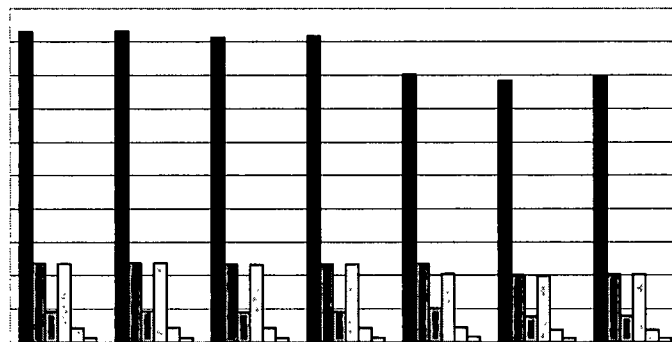
3,000

2,000

1,000

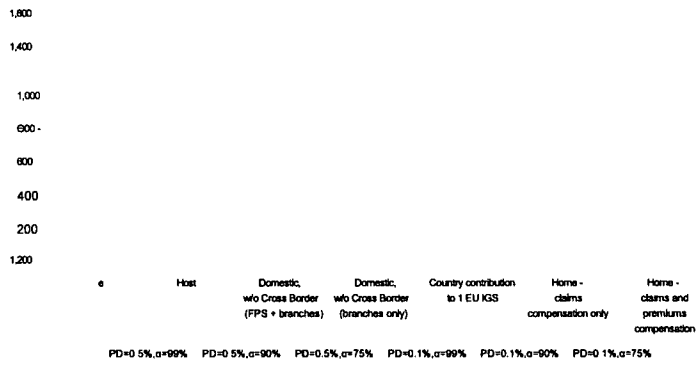


Germany - Non-Life Insurance

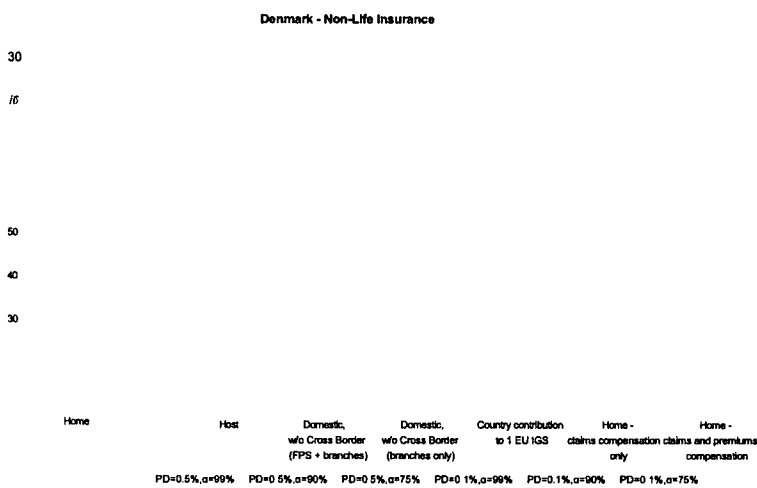
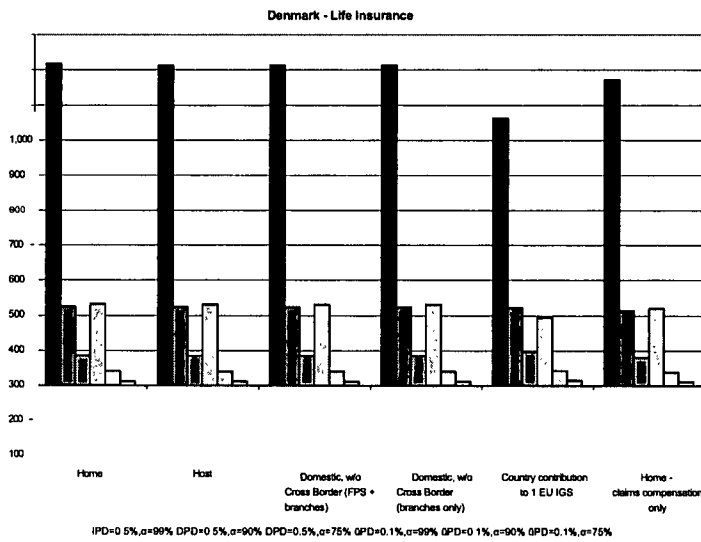
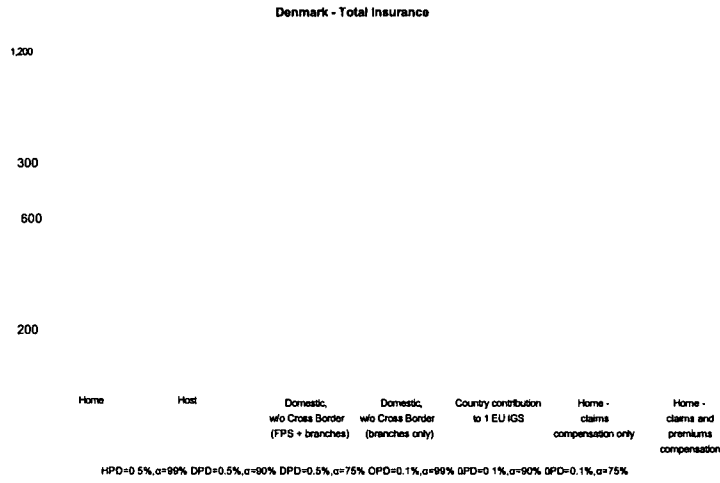


2,000

1,000



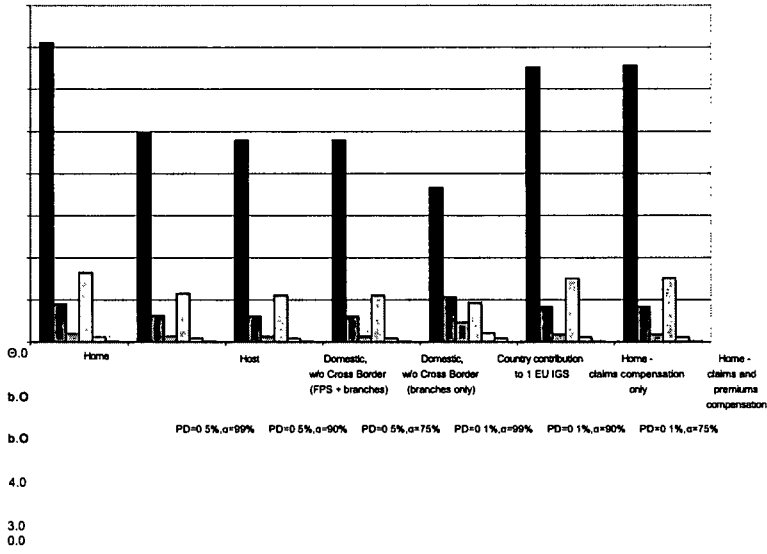
## A6.7 Denmark



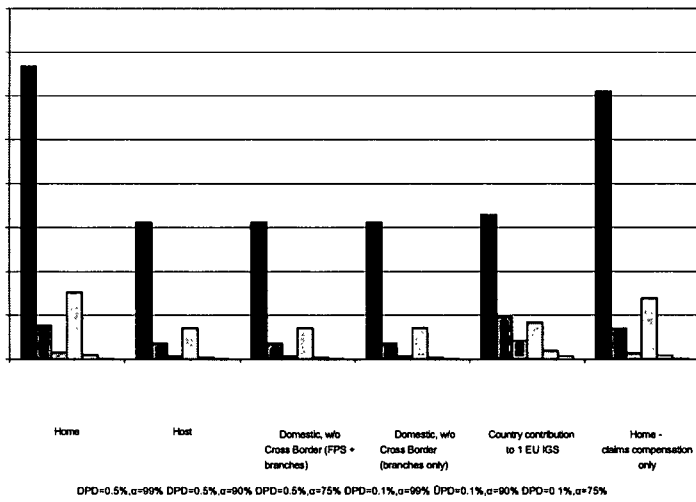
Note: red line refers to the target fund size

# A6.8 Estonia

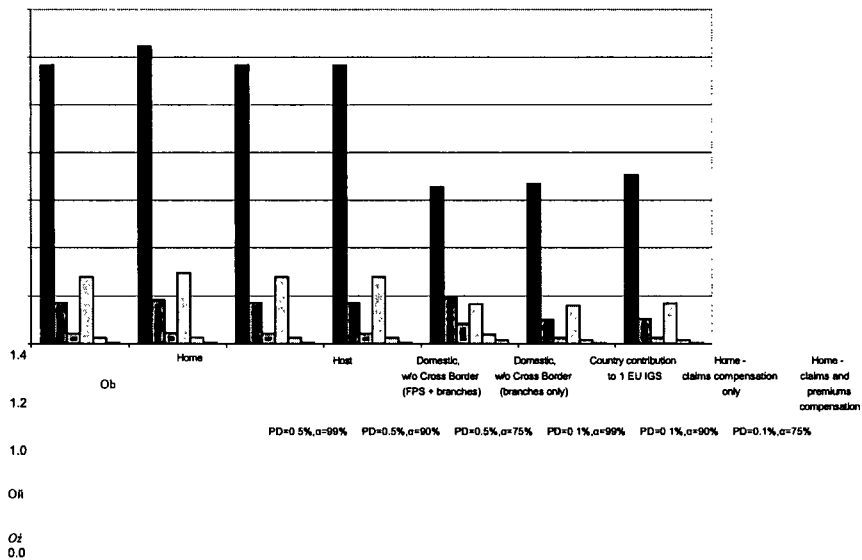
Estonia - Total Insurance



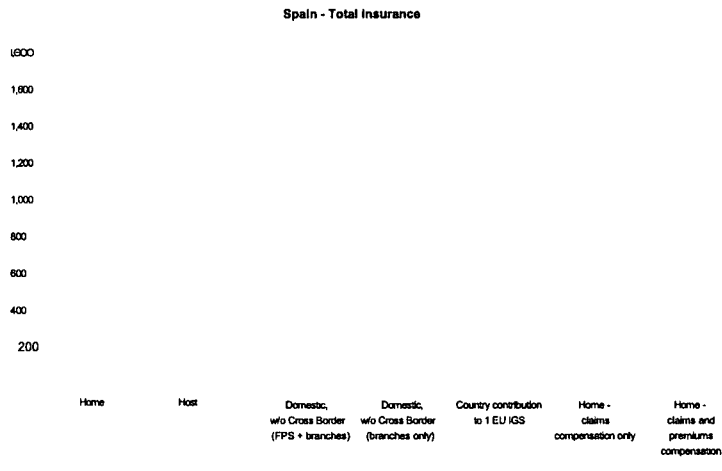
Estonia - Life Insurance



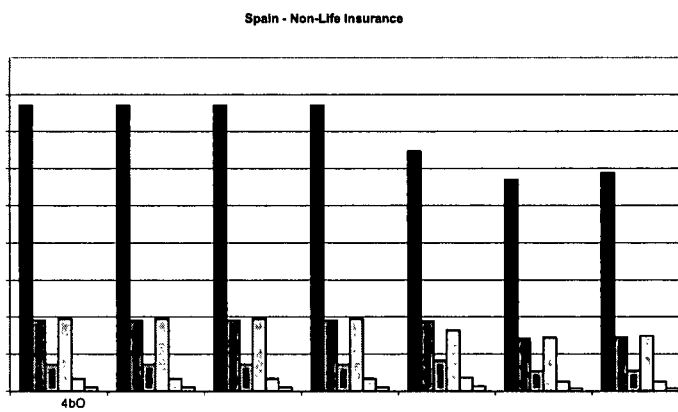
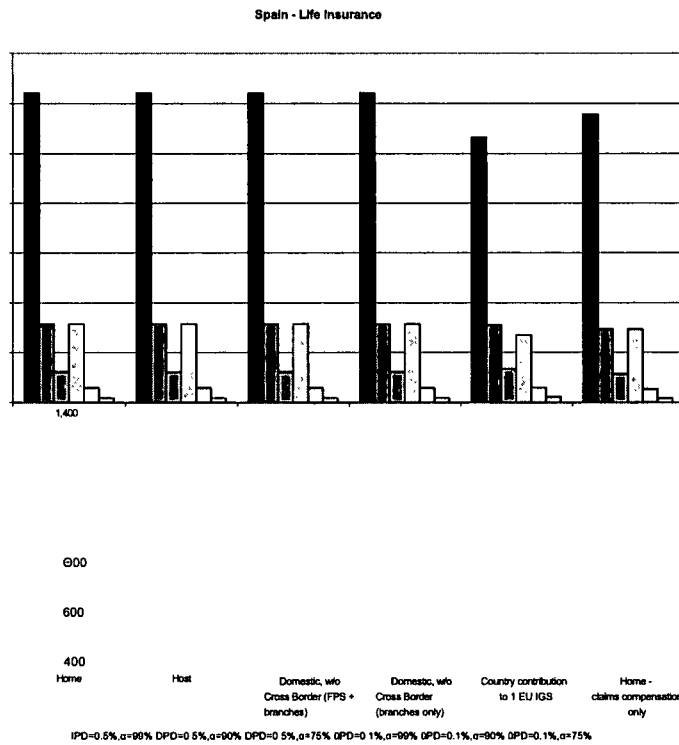
Estonia - Non-Life Insurance



## A6.9 Spain



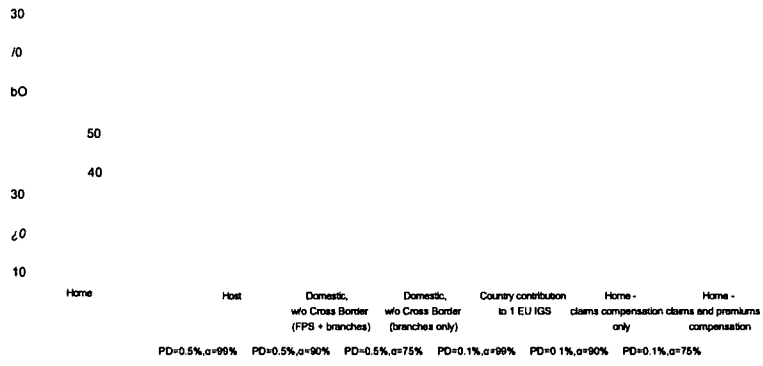
*Note: red line refers to the 2008 fund size*



Host	Domestic, w/o Cross Border (FPS + branches)	Domestic, w/o Cross Border (branches only)	Country contribution to 1 EU IGS	Home - claims compensation only	Home - claims and premiums compensation
PD=0.5%, $\alpha=99\%$	PD=0.5%, $\alpha=90\%$	PD=0.5%, $\alpha=75\%$	PD=0.1%, $\alpha=99\%$	PD=0.1%, $\alpha=90\%$	PD=0.1%, $\alpha=75\%$

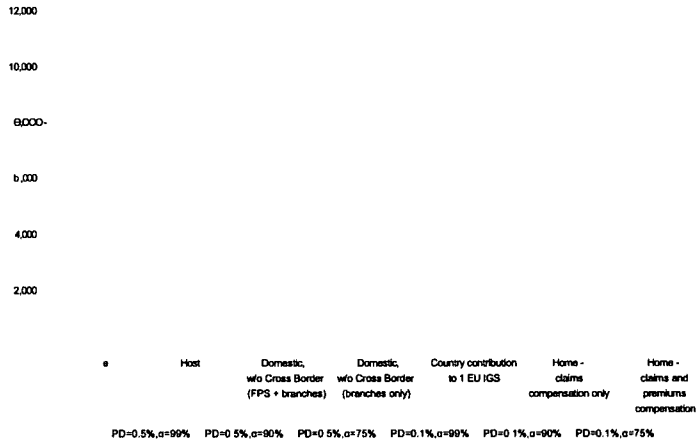




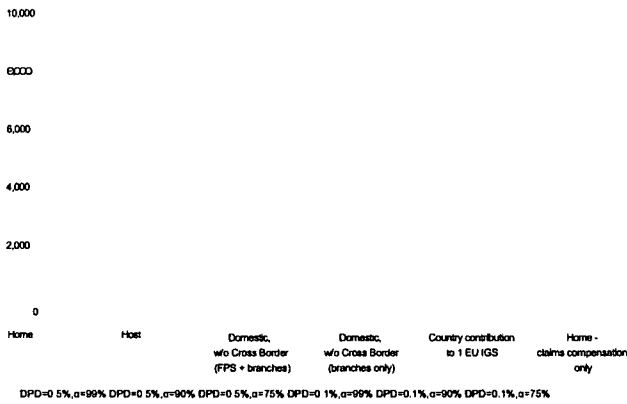


# A6.11 France

France - Total Insurance

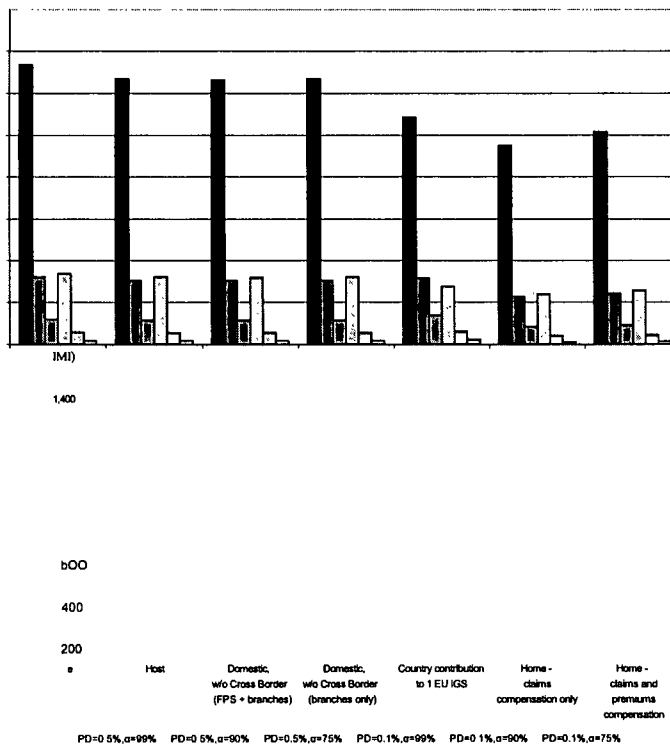


France - Life Insurance



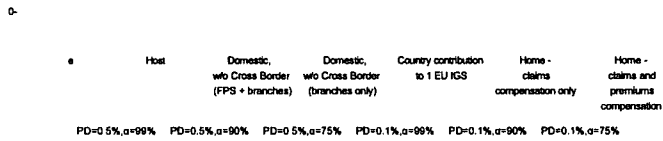
Note: red line refers to the 2007 fund size

France - Non-Life Insurance

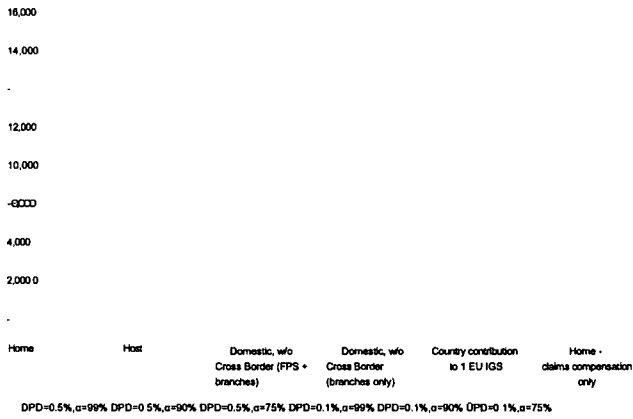


# A6.12 United Kingdom

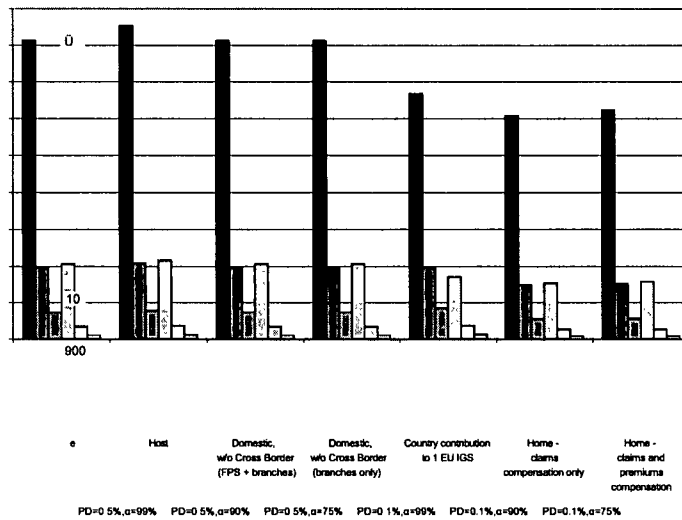
## United Kingdom - Total Insurance



## United Kingdom - Life Insurance

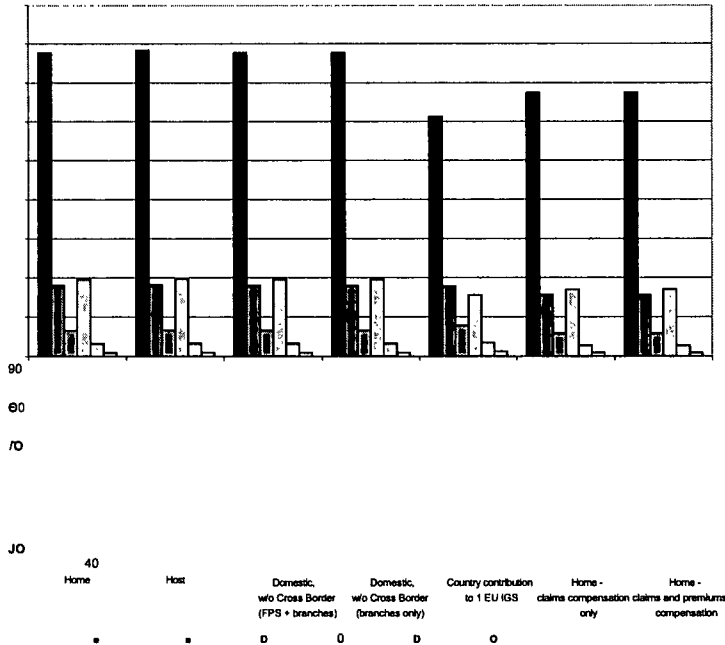


## United Kingdom - Non-Life Insurance

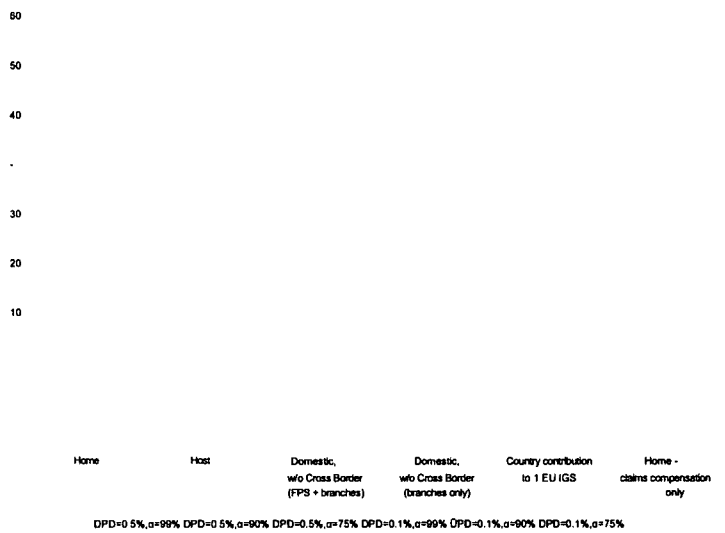


# A6.13 Greece

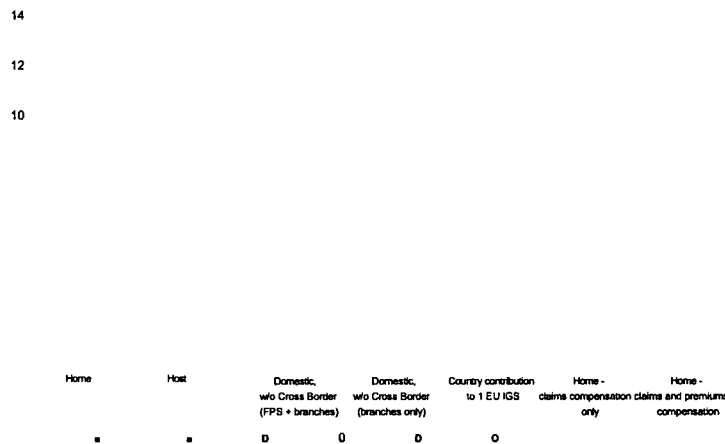
Greece - Total Insurance



Greece - Life Insurance

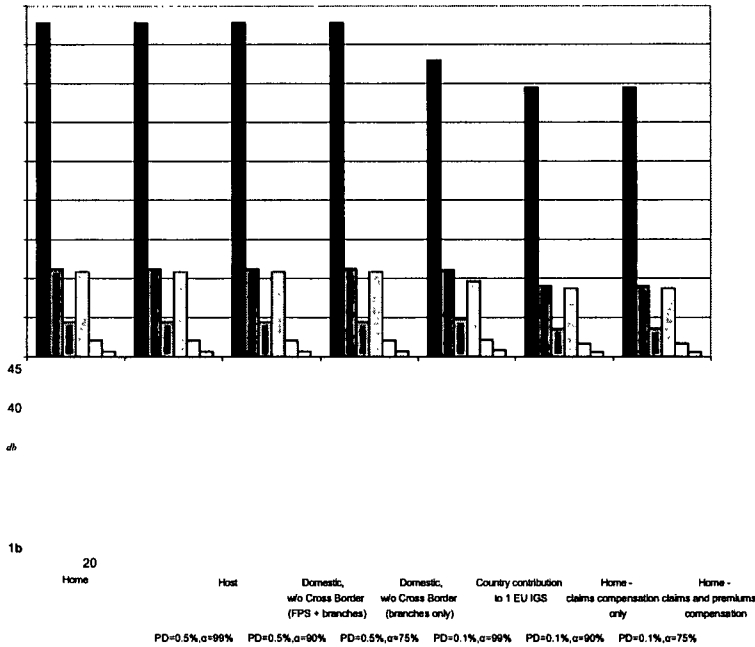


Greece - Non-Life Insurance

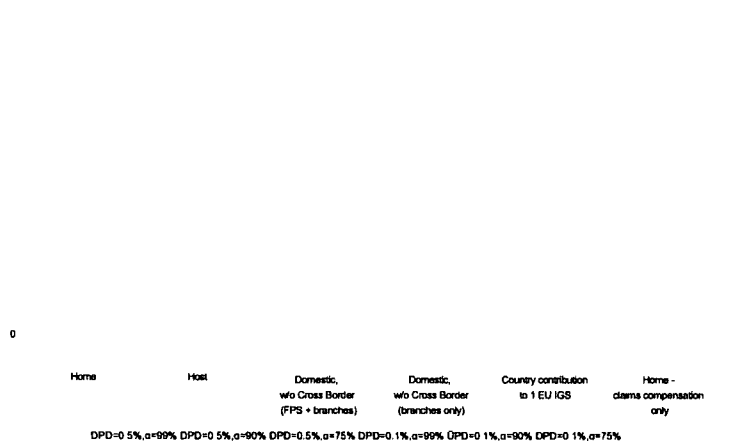


# A6.14 Hungary

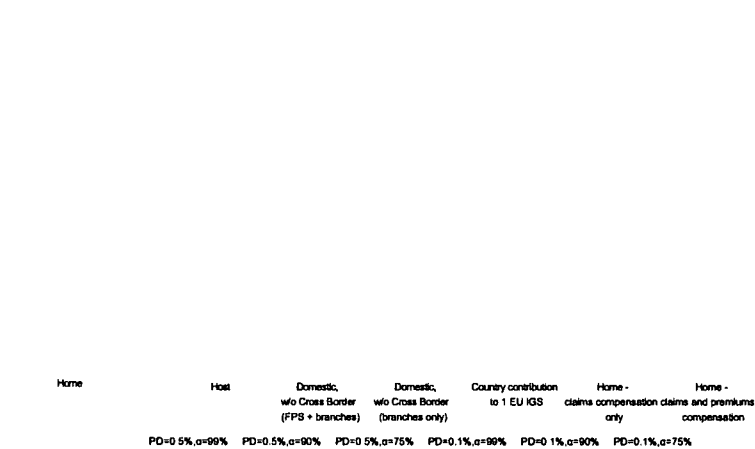
Hungary - Total Insurance



Hungary - Life Insurance

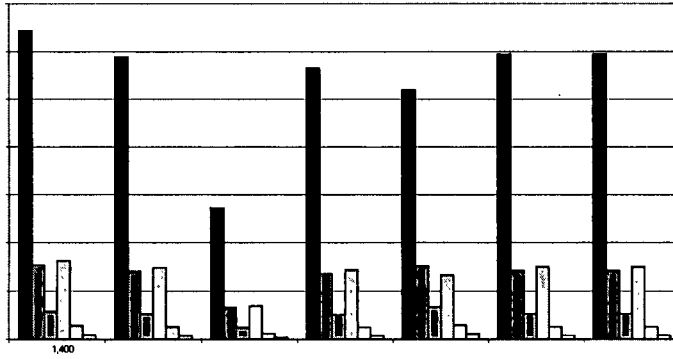


Hungary - Non-Life Insurance



# A6.15 Ireland

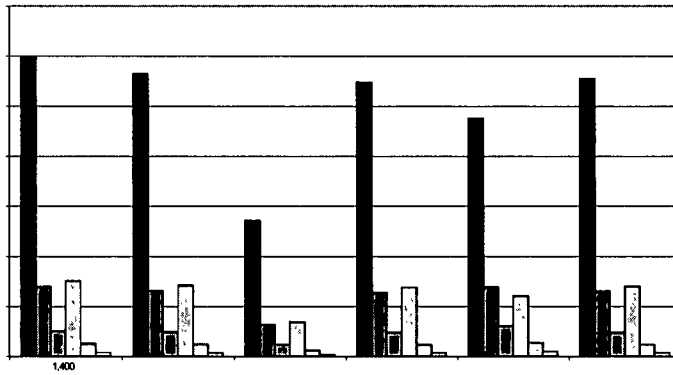
Ireland - Total Insurance



€00  
e

Host	Domestic, w/o Cross Border (FPS + branches)	Domestic, w/o Cross Border (branches only)	Country contribution to 1 EU KGS	Home-claims compensation only	Home-claims and premiums compensation
PD=0.5%, $\alpha$ =99%	PD=0.5%, $\alpha$ =90%	PD=0.5%, $\alpha$ =75%	PD=0.1%, $\alpha$ =99%	PD=0.1%, $\alpha$ =90%	PD=0.1%, $\alpha$ =75%

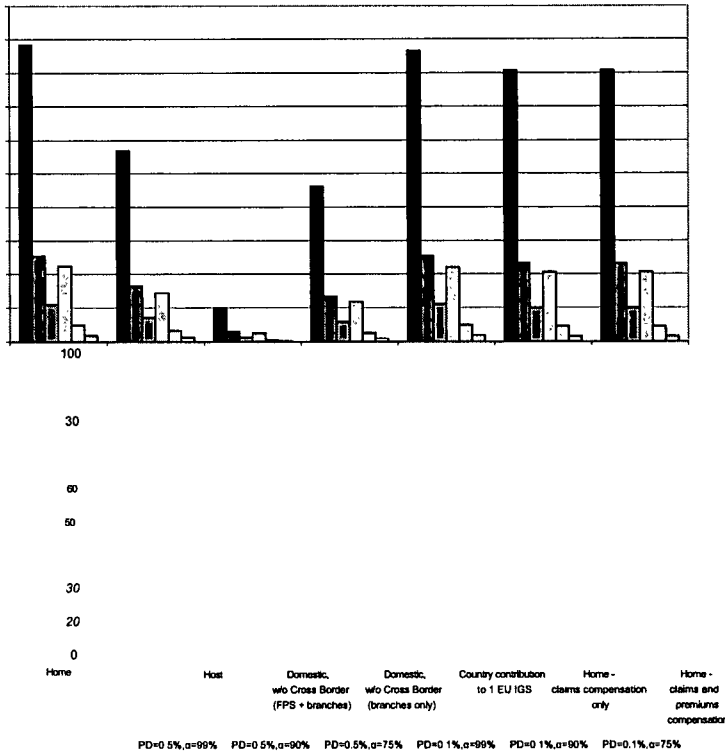
Ireland - Life Insurance



600  
400  
€00  
Home

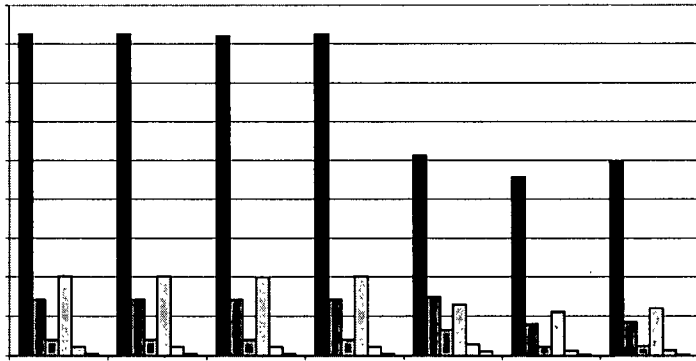
Host	Domestic, w/o Cross Border (FPS + branches)	Domestic, w/o Cross Border (branches only)	Country contribution to 1 EU KGS	Home-claims compensation only	Home-claims and premiums compensation
DPD=0.5%, $\alpha$ =99%	DPD=0.5%, $\alpha$ =90%	DPD=0.5%, $\alpha$ =75%	DPD=0.1%, $\alpha$ =99%	DPD=0.1%, $\alpha$ =90%	DPD=0.1%, $\alpha$ =75%

Ireland - Non-Life Insurance



## A6.16 Iceland

Iceland - Total Insurance



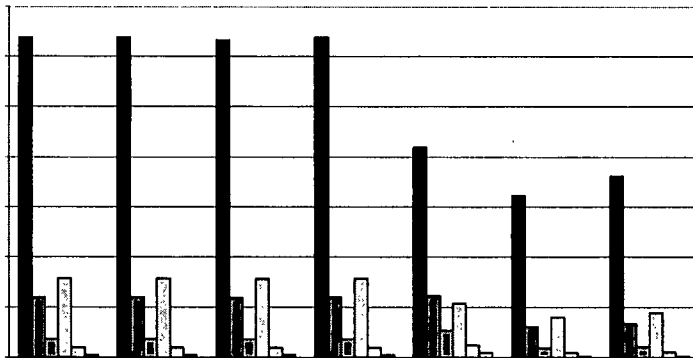
Home	Host	Domestic, w/o Cross Border (FPS + branches)	Domestic, w/o Cross Border (branches only)	Country contribution to 1 EU IGS	Home - claims compensation only	Home - claims compensation and premiums compensation
PD=0.5%, $\alpha=99\%$	PD=0.5%, $\alpha=90\%$	PD=0.5%, $\alpha=75\%$	PD=0.1%, $\alpha=99\%$	PD=0.1%, $\alpha=90\%$	PD=0.1%, $\alpha=75\%$	

Iceland - Life Insurance

2

Home	Host	Domestic, w/o Cross Border (FPS + branches)	Domestic, w/o Cross Border (branches only)	Country contribution to 1 EU IGS	Home - claims compensation only
DPD=0.5%, $\alpha=99\%$	DPD=0.5%, $\alpha=90\%$	DPD=0.5%, $\alpha=75\%$	DPD=0.1%, $\alpha=99\%$	DPD=0.1%, $\alpha=90\%$	DPD=0.1%, $\alpha=75\%$

Iceland - Non-Life Insurance

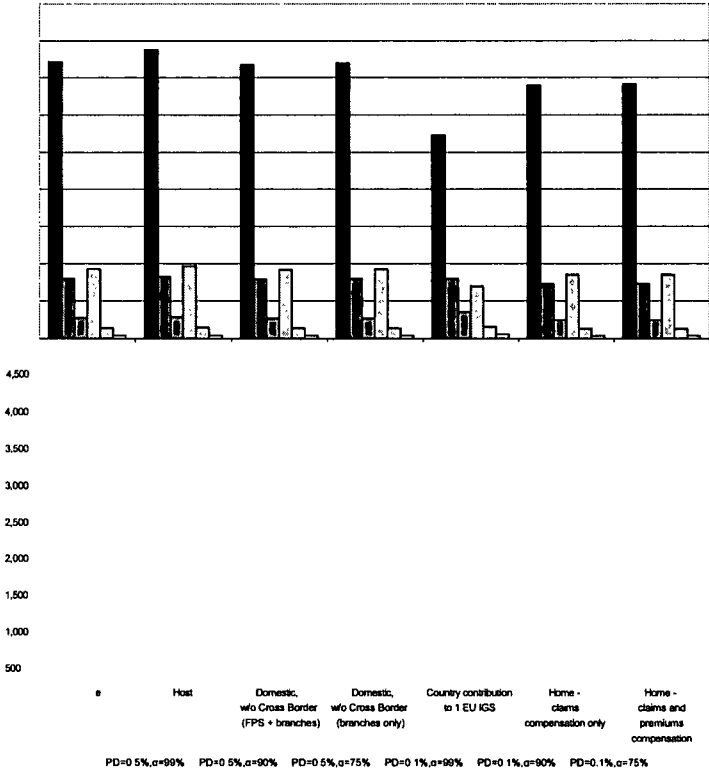


Home	Host	Domestic, w/o Cross Border (FPS + branches)	Domestic, w/o Cross Border (branches only)	Country contribution to 1 EU IGS	Home - claims compensation only	Home - claims compensation and premiums compensation
PD=0.5%, $\alpha=99\%$	PD=0.5%, $\alpha=90\%$	PD=0.5%, $\alpha=75\%$	PD=0.1%, $\alpha=99\%$	PD=0.1%, $\alpha=90\%$	PD=0.1%, $\alpha=75\%$	

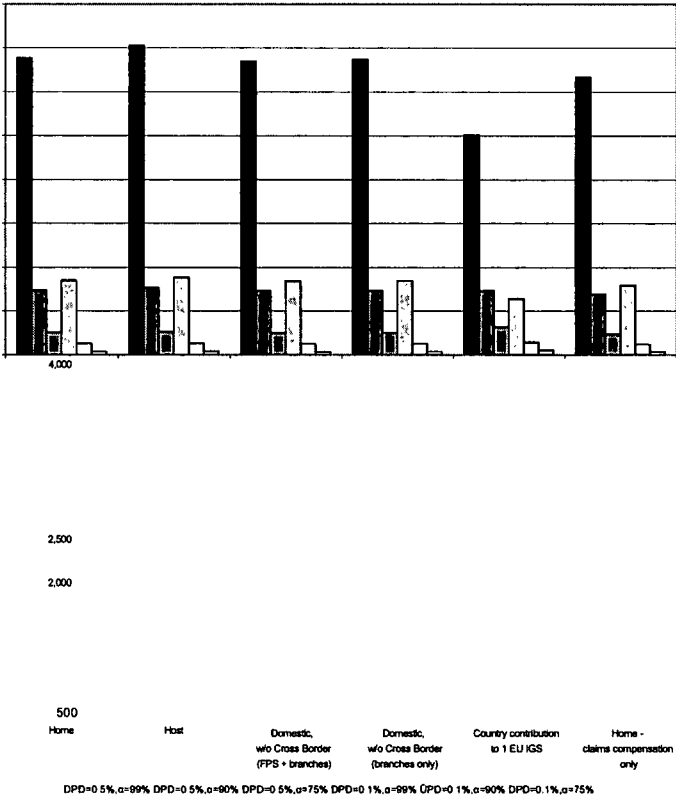


# A6.17 Italy

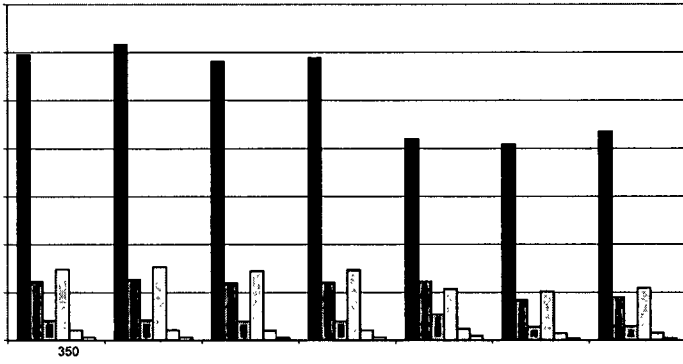
Italy - Total Insurance



Italy - Life Insurance



Italy - Non-Life Insurance

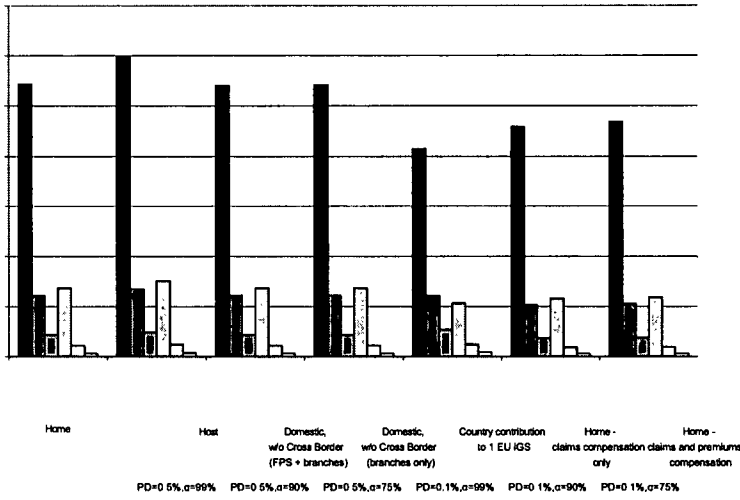


DO  
Home

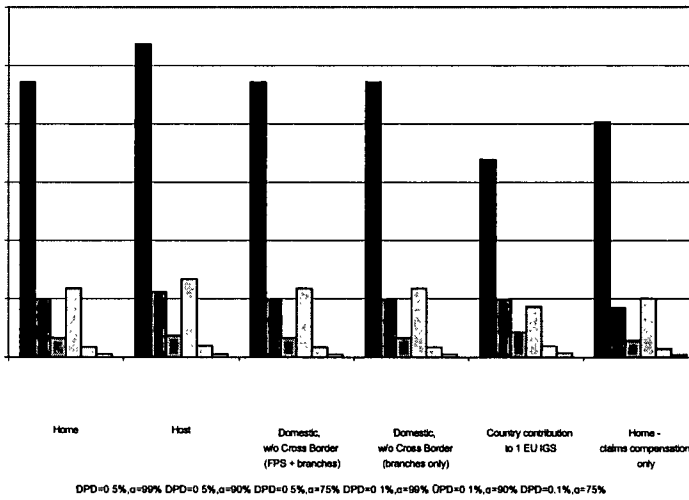
Host	Domestic, wo Cross Border (FPS + branches)	Domestic, wo Cross Border (branches only)	Country contribution to 1 EU IGS	Home - claims compensation only	Home - claims and premiums compensation
PD=0.5%, α=99%	PD=0.5%, α=90%	PD=0.5%, α=75%	PD=0.1%, α=99%	PD=0.1%, α=90%	PD=0.1%, α=75%

## A6.18 Lithuania

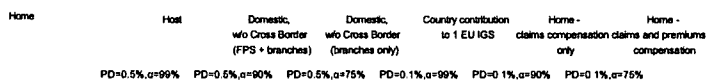
Lithuania - Total Insurance



Lithuania - Life Insurance

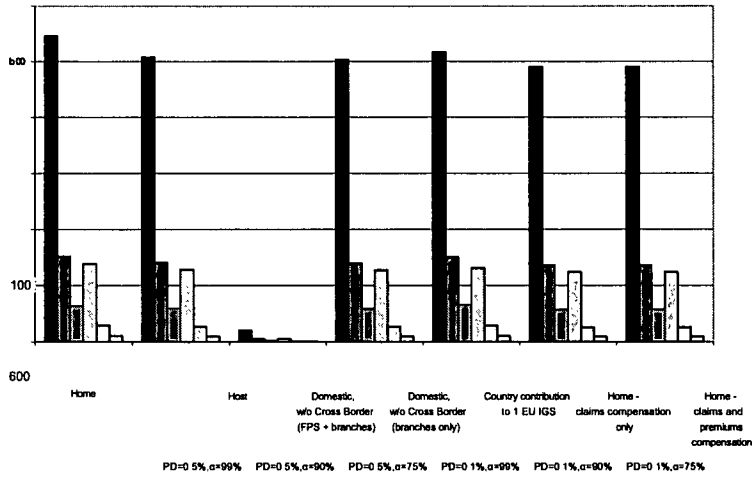


Lithuania - Non-Life Insurance

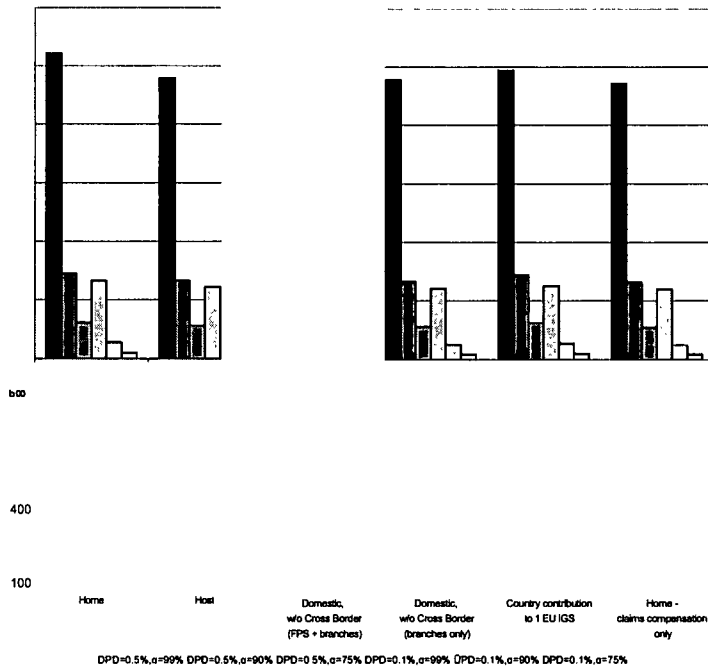


# A6.19 Luxembourg

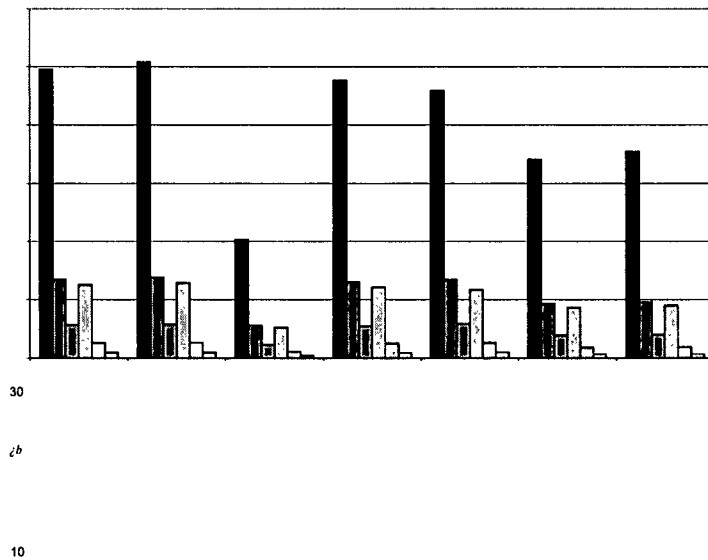
Luxembourg - Total Insurance



Luxembourg - Life Insurance



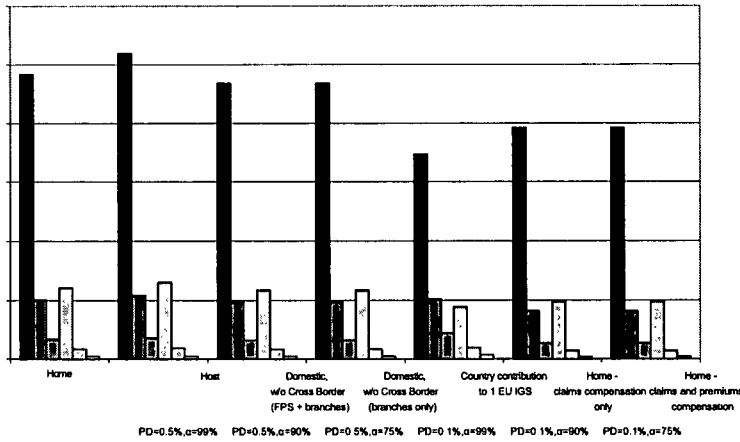
Luxembourg - Non-Life Insurance



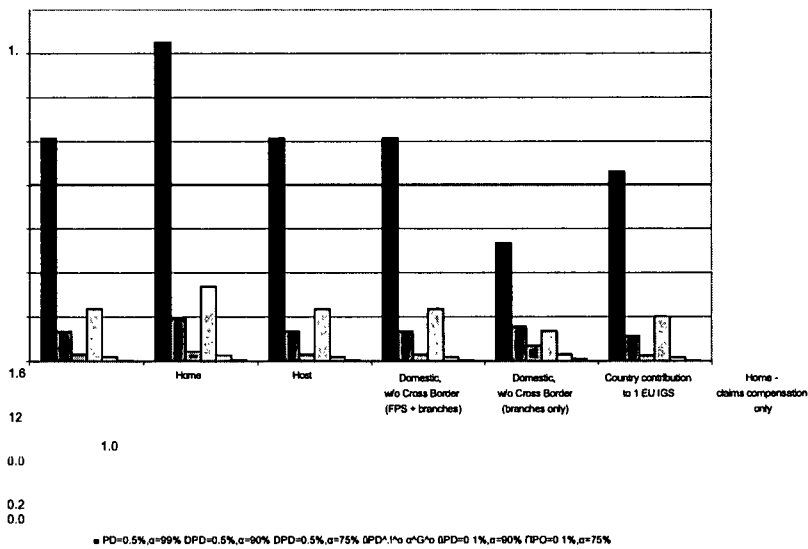
Home	Host	Domestic, w/o Cross Border (FPS + branches)	Domestic, w/o Cross Border (branches only)	Country contribution to 1 EU IGS	Home - claims compensation only	Home - claims and premiums compensation
PD=0.5%, $\alpha$ =99%	PD=0.5%, $\alpha$ =90%	PD=0.5%, $\alpha$ =75%	PD=0.1%, $\alpha$ =99%	PD=0.1%, $\alpha$ =90%	PD=0.1%, $\alpha$ =75%	

# A6.20 Latvia

Latvia - Total Insurance

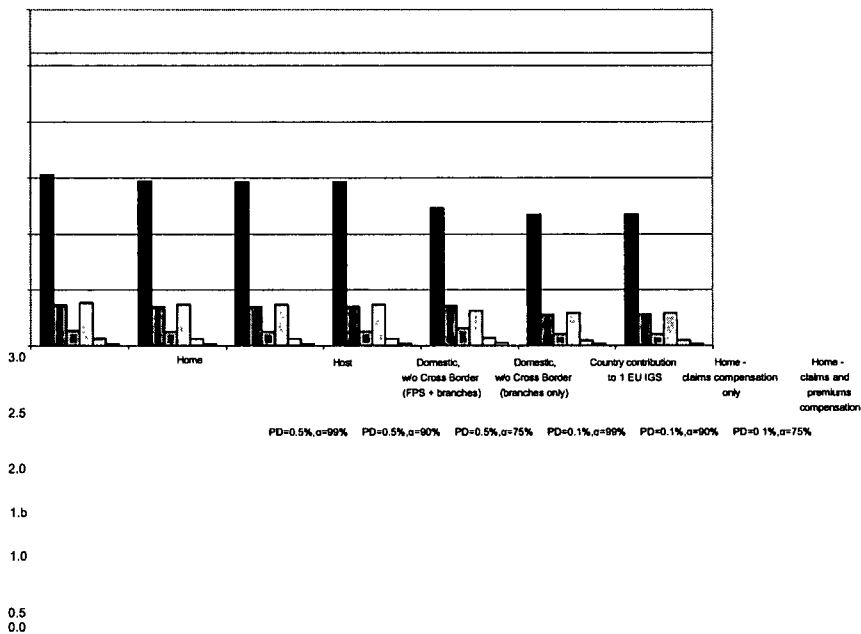


Latvia - Life Insurance



Note: red line refers to the 2006 fund size

Latvia - Non-Life Insurance

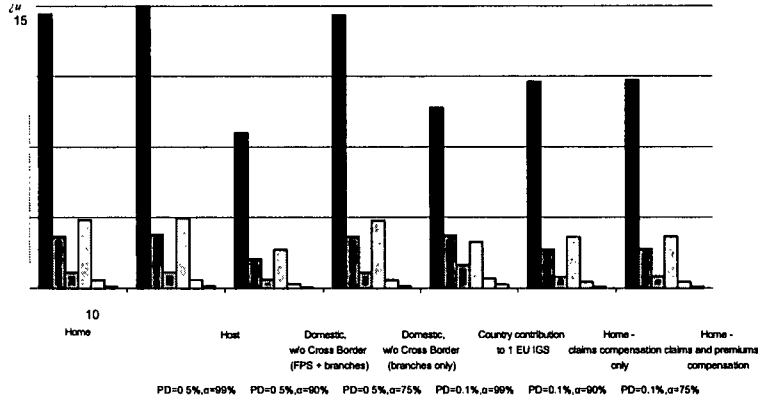


Note: red line refers to the 2006 fund size

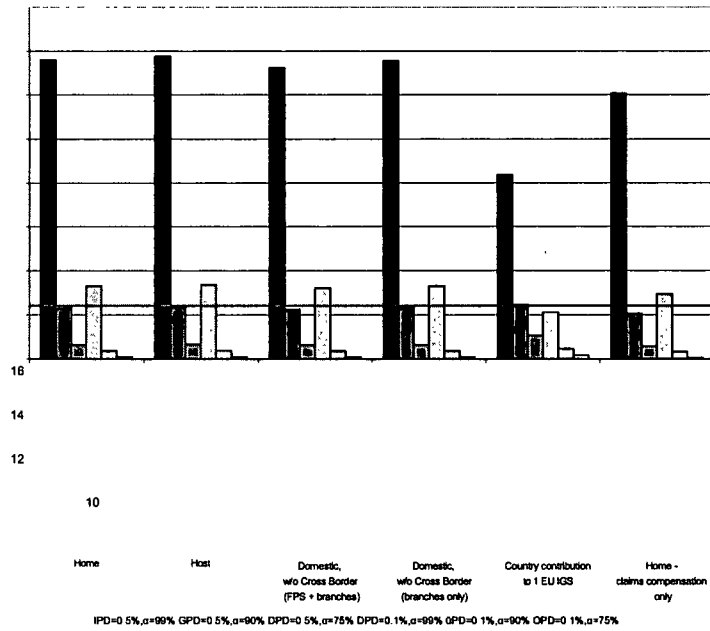
# A6.21 Malta

Malta - Total Insurance

2b

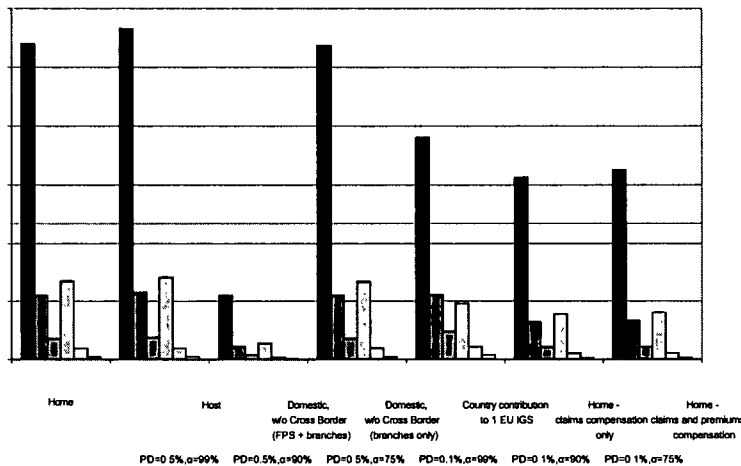


Malta - Life Insurance



Note: red line refers to the target fund size

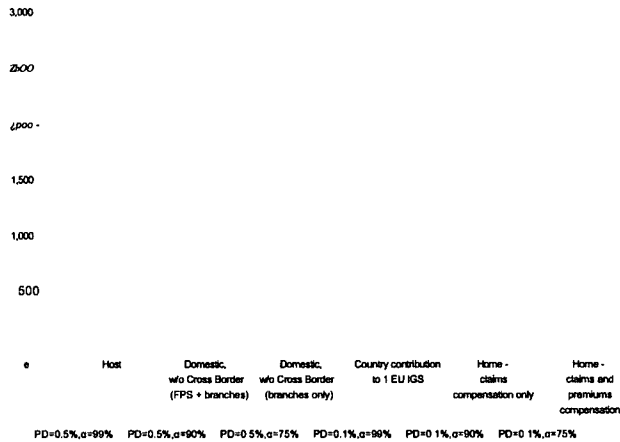
Malta - Non-Life Insurance



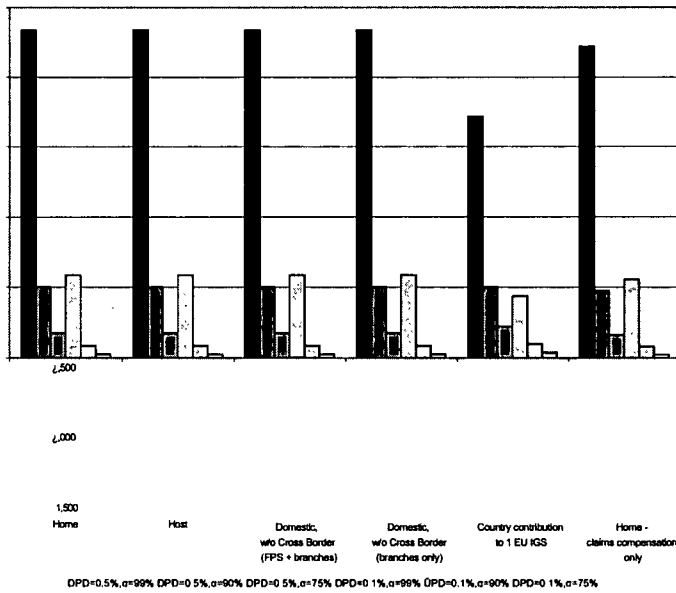
Note: red line refers to the target fund size

## A6.22 The Netherlands

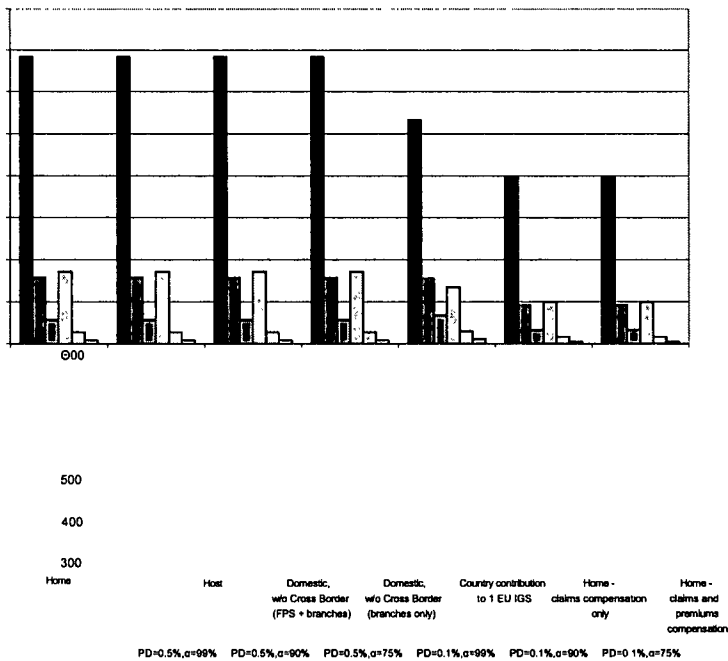
The Netherlands - Total Insurance



The Netherlands - Life Insurance



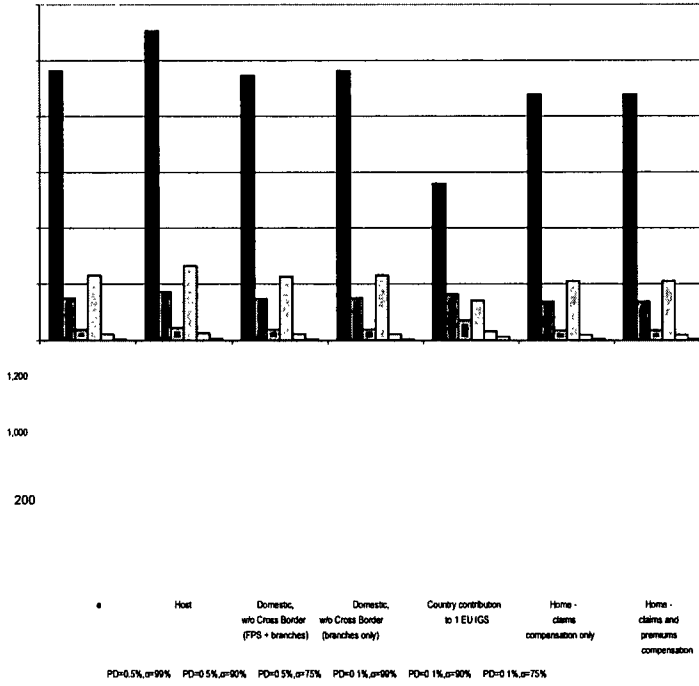
The Netherlands - Non-Life Insurance



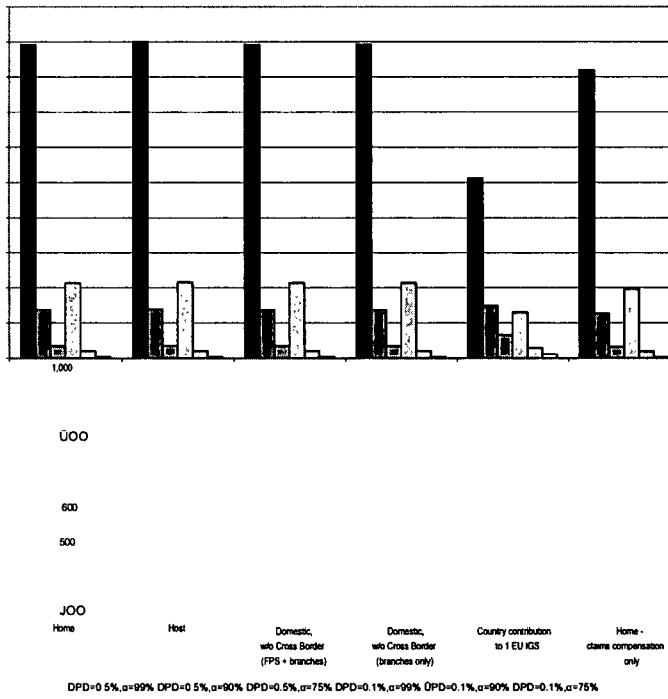


## A6.23 Norway

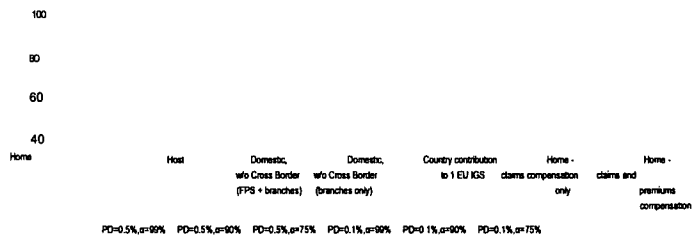
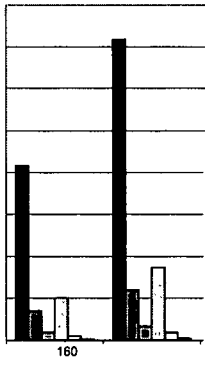
Norway - Total Insurance



Norway - Life Insurance

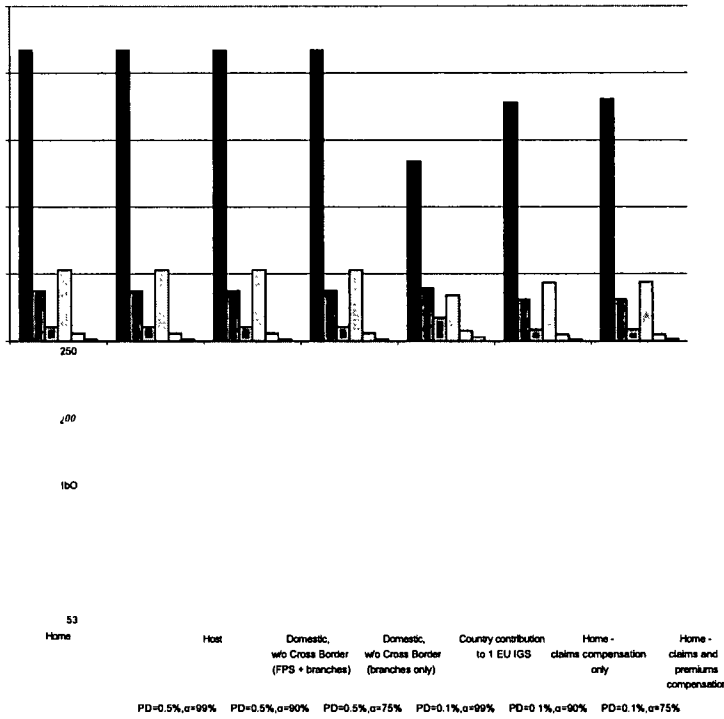


Norway - Non-Life Insurance

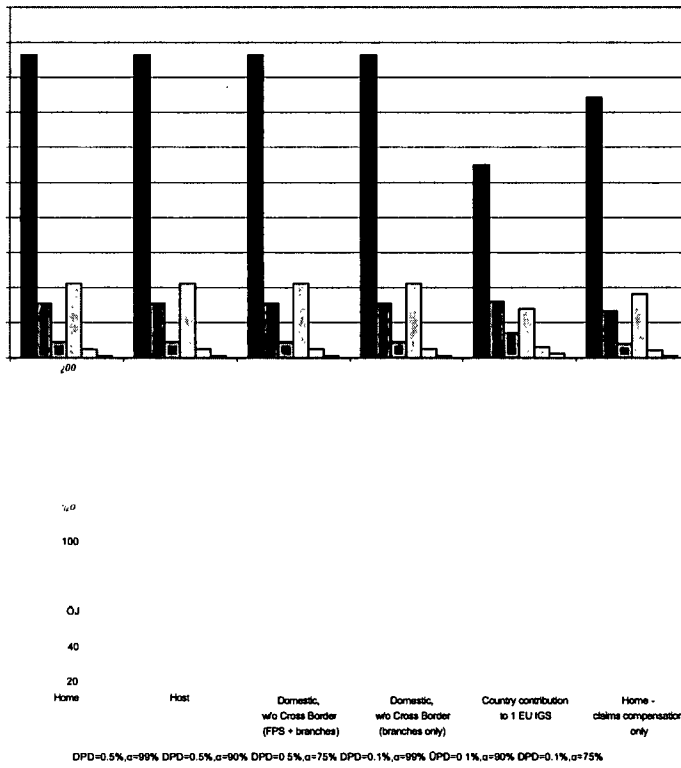


# A6.24 Poland

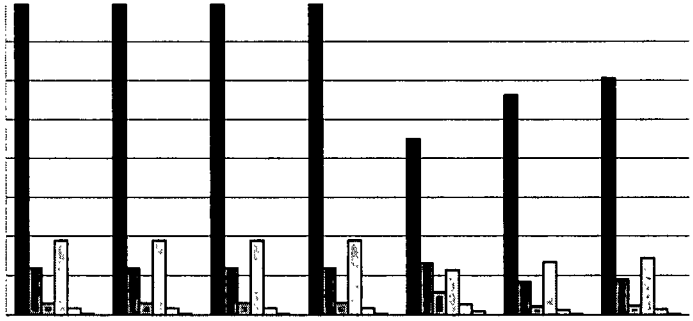
Poland - Total Insurance



Poland - Life Insurance



Poland - Non-Life Insurance



26

30

25

20

1b

10

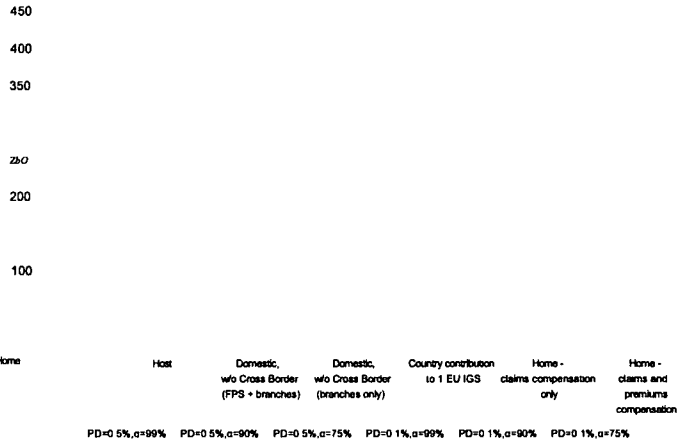
Home

Host Domestic, w/o Cross Border (FPS + branches) Domestic, w/o Cross Border (branches only) Country contribution to 1 EU IGS Home - claims compensation only Home - claims and premiums compensation

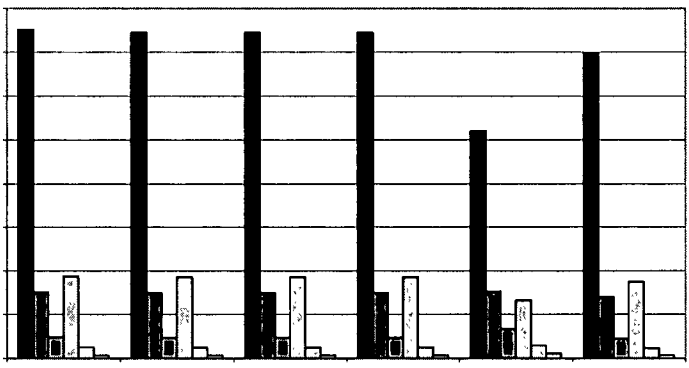
PD=0.5%, alpha=99% PD=0.5%, alpha=90% PD=0.5%, alpha=75% PD=0.1%, alpha=99% PD=0.1%, alpha=90% PD=0.1%, alpha=75%

# A6.25 Portugal

Portugal - Total Insurance



Portugal - Life Insurance

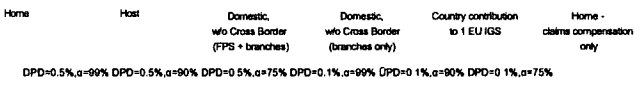


400

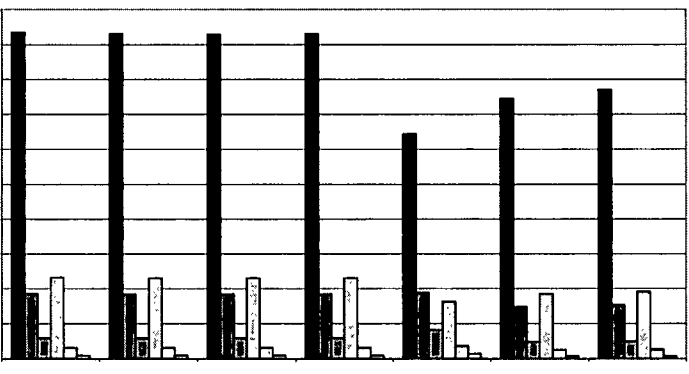
250

150

50



Portugal - Non-Life Insurance



50

45

40

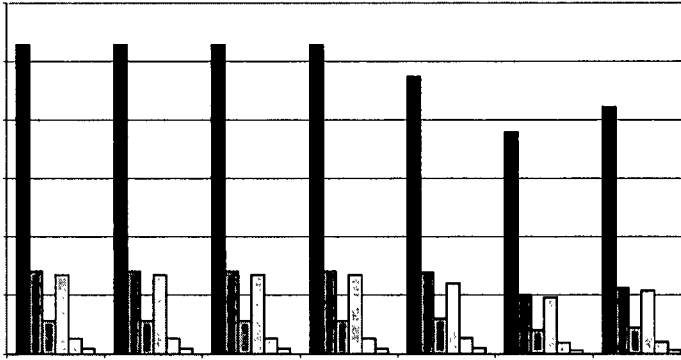
35

20

Home	Host	Domestic, wo Cross Border (FPS + branches)	Domestic, wo Cross Border (branches only)	Country contribution to 1 EU IGS	Home - claims compensation only	Home - claims and premiums compensation
PD=0.5%, $\alpha$ =99%	PD=0.5%, $\alpha$ =90%	PD=0.6%, $\alpha$ =75%	PD=0.1%, $\alpha$ =99%	PD=0.1%, $\alpha$ =90%	PD=0.1%, $\alpha$ =75%	

# A6.26 Romania

Romania - Total Insurance



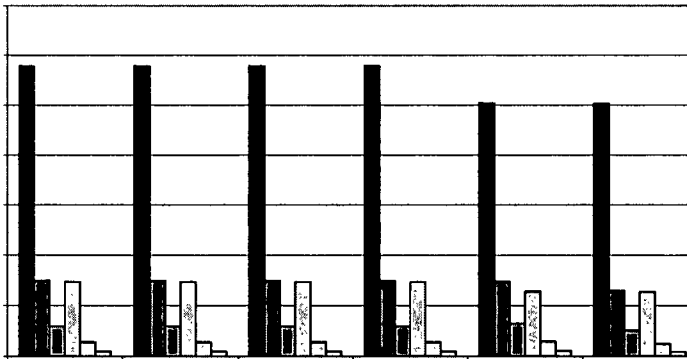
12

10

Home Host Domestic, w/o Cross Border (FPS + branches) Domestic, w/o Cross Border (branches only) Country contribution to 1 EU IGS Home - claims compensation only Home - claims compensation and premiums

PD=0.5%, $\alpha$ =99% PD=0.5%, $\alpha$ =90% PD=0.5%, $\alpha$ =75% PD=0.1%, $\alpha$ =99% PD=0.1%, $\alpha$ =90% PD=0.1%, $\alpha$ =75%

Romania - Life Insurance



Home Host Domestic, w/o Cross Border (FPS + branches) Domestic, w/o Cross Border (branches only) Country contribution to 1 EU IGS Home - claims compensation only

■ PM5%, $\alpha$ =99% DPD=0.5%, $\alpha$ =90% DPD=0.5%, $\alpha$ =75% DPD=0.1%, $\alpha$ =99% DPD=0.1%, $\alpha$ =90% DPD=0.1%, $\alpha$ =75%

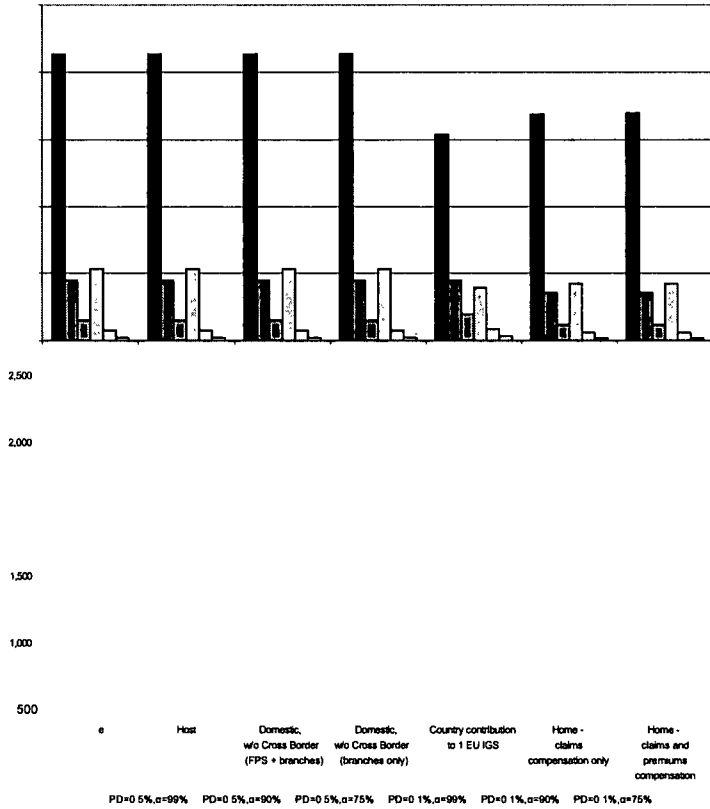
Romania - Non-Life Insurance

Home Host Domestic, w/o Cross Border (FPS + branches) Domestic, w/o Cross Border (branches only) Country contribution to 1 EU IGS Home - claims compensation only Home - claims compensation and (FPS + branches) e - premiums nsation

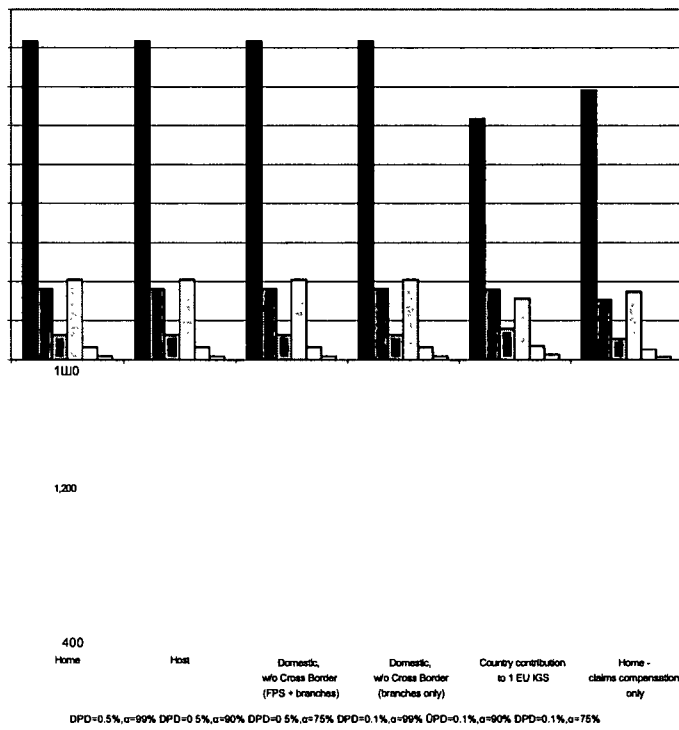
■ PD=0.5%, $\alpha$ =99% DPD=0.5%, $\alpha$ =90% DPD=0.5%, $\alpha$ =75% DPD=0.1%, $\alpha$ =99% DPD=0.1%, $\alpha$ =90% DPD=0.1%, $\alpha$ =75%

# A6.27 Sweden

Sweden - Total Insurance

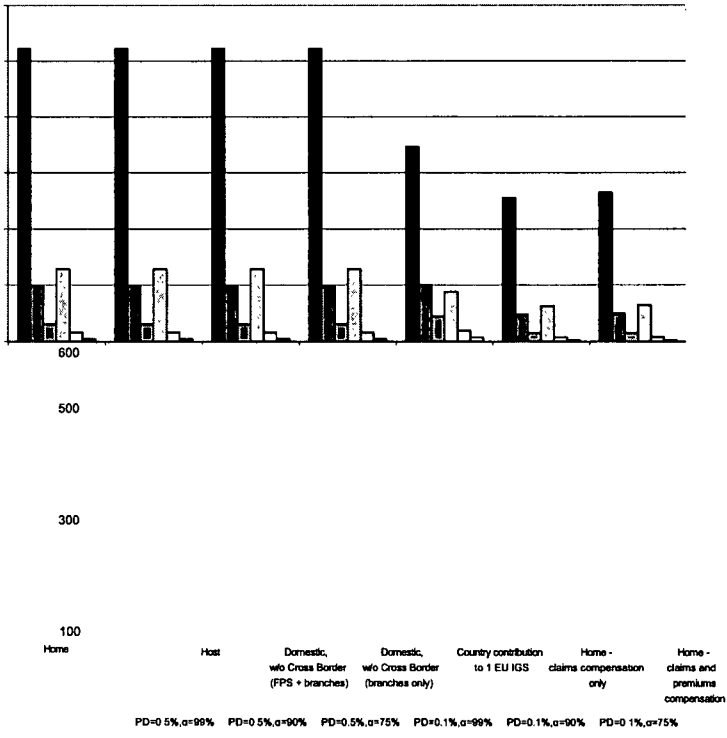


Sweden - Life Insurance



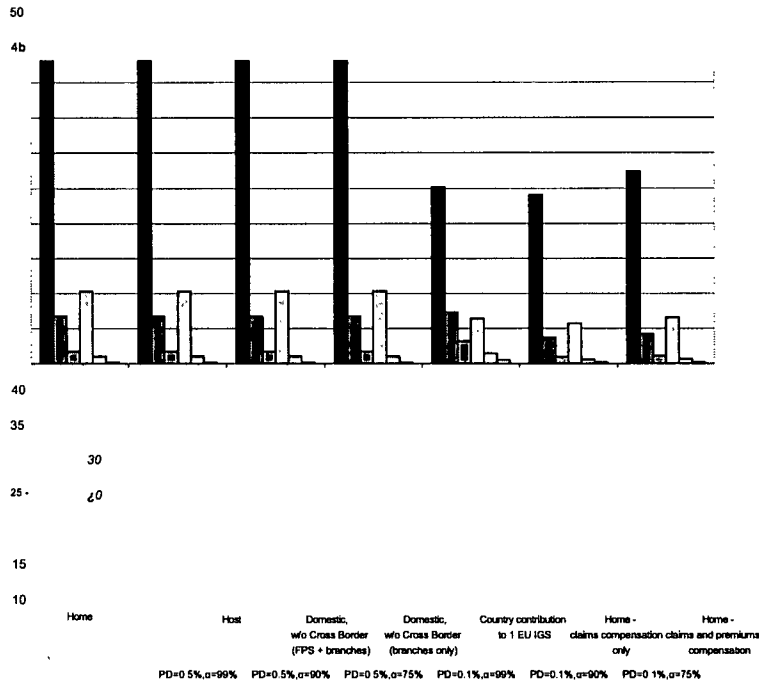
Sweden - Non-Life Insurance



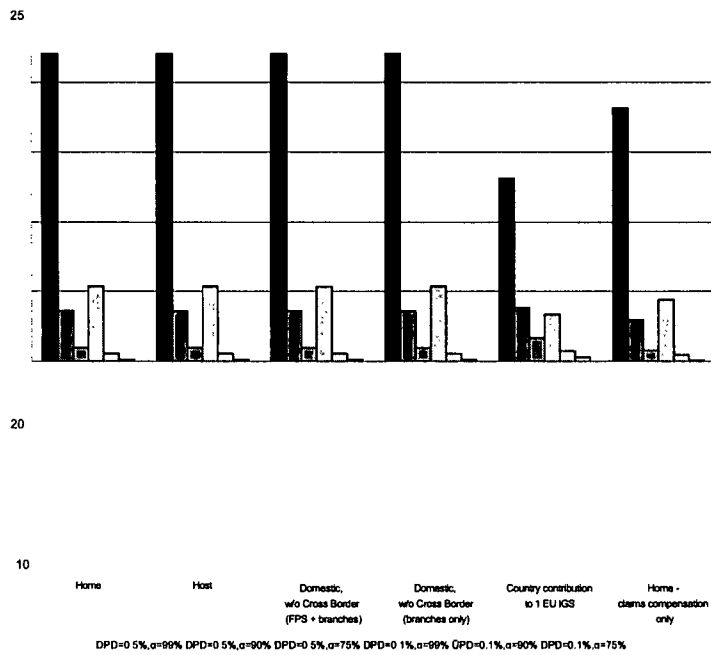


# A6.28 Slovenia

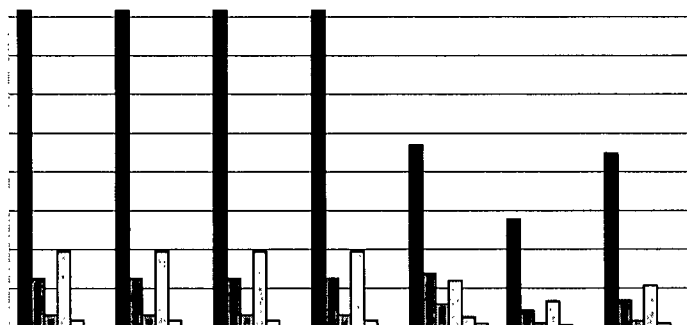
Slovenia - Total Insurance



Slovenia - Life Insurance



Slovenia - Non-Life Insurance



14

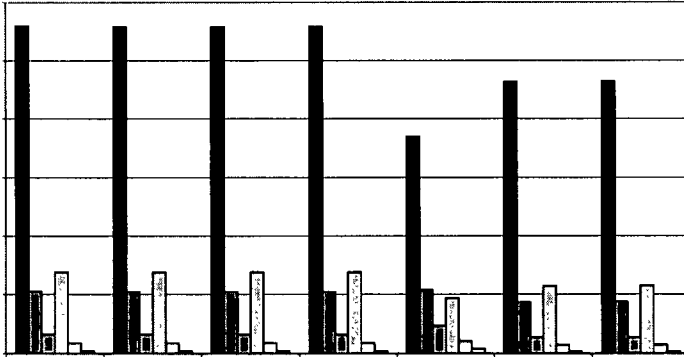
12

10

Home	Host	Domestic, w/o Cross Border (FPS + branches)	Domestic, w/o Cross Border (branches only)	Country contribution to 1 EU IGS	Home - claims compensation only	Home - claims and premiums compensation
PD=0.5%, $\alpha$ =99%	PD=0.5%, $\alpha$ =90%	PD=0.5%, $\alpha$ =75%	PD=0.1%, $\alpha$ =99%	PD=0.1%, $\alpha$ =90%	PD=0.1%, $\alpha$ =75%	

# A6.29 Slovakia

Slovakia - Total Insurance



30

25

10

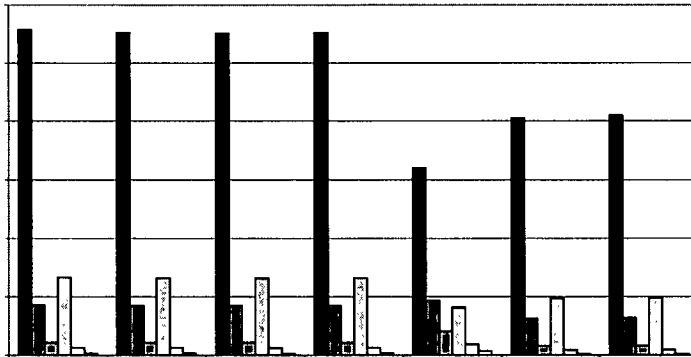
Home Host Domestic, who Cross Border (FPS + branches) Domestic, who Cross Border (branches only) Country contribution to 1 EU IGS Home - claims compensation only Home - claims compensation and premiums compensation

Slovakia - Life Insurance

0

Home Host Domestic, who Cross Border (FPS + branches) Domestic, who Cross Border (branches only) Country contribution to 1 EU IGS Home - claims compensation only  
 DPD=0.5%, $\alpha$ =99% DPD=0.5%, $\alpha$ =90% DPD=0.5%, $\alpha$ =75% DPD=0.1%, $\alpha$ =99% OPD=0.1%, $\alpha$ =90% DPD=0.1%, $\alpha$ =75%

Slovakia - Non-Life Insurance



Home Host Domestic, who Cross Border (FPS + branches) Domestic, who Cross Border (branches only) Country contribution to 1 EU IGS Home - claims compensation only Home - claims compensation and premiums compensation