



EUROPEAN COMMISSION

Brussels, 20.7.2011  
SEC(2011) 943 final

**COMMISSION STAFF WORKING PAPER**

*Accompanying the document*

**REPORT FROM THE COMMISSION TO THE EUROPEAN PARLIAMENT, THE  
COUNCIL, THE EUROPEAN ECONOMIC AND SOCIAL COMMITTEE AND THE  
COMMITTEE OF THE REGIONS**

**on the implementation of the national strategy plans and the Community strategic  
guidelines for rural development (2007-2013).**

{COM(2011) 450 final}

**Table 1: EAFRD expenditures realized 2007-2009, EAFRD total allocation 2007-2013  
(before HC as at mid-2008) and uptake level<sup>1</sup>**

| Measures code       | Measures  | Number of RDP implementing the measures (max 88) | EAFRD 2007-2009      | Total allocation 2007-2013 | uptake level |
|---------------------|---|--|----------------------|----------------------------|--------------|
| 111                 | Vocational training and information actions   | 78   | 93 266 011           | 996 338 654                | 9%           |
| 112                 | Setting-up of young farmers   | 69   | 537 109 921          | 2 729 762 572              | 20%          |
| 113                 | Early retirement  | 52   | 750 047 270          | 2 644 456 215              | 28%          |
| 114                 | Use of advisory services  | 60   | 12 241 690           | 662 546 667                | 2%           |
| 115                 | Setting up of farm management, relief and advisory services   | 33   | 1 958 763            | 137 271 564                | 1%           |
| 121                 | Modernisation of agricultural holdings  | 86   | 2 165 093 096        | 9 652 819 268              | 22%          |
| 122                 | Improvement of the economic value of forests  | 50   | 50 823 649           | 652 127 142                | 8%           |
| 123                 | Adding value to agricultural and forestry products  | 86   | 528 305 883          | 5 519 893 083              | 10%          |
| 124                 | Cooperation for development of new products, processes and technologies   | 55   | 8 006 806            | 336 457 412                | 2%           |
| 125                 | Infrastructure related to the development and adaptation of agriculture and forestry                                    | 78   | 456 373 495          | 4 866 010 414              | 9%           |
| 126                 | Restoring agricultural production potential damaged by natural disasters and introducing appropriate prevention actions | 25   | 69 860 106           | 732 535 861                | 10%          |
| 131                 | Meeting standards based on Community legislation  | 17   | 44 128 620           | 96 683 558                 | 46%          |
| 132                 | Participation of farmers in food quality schemes  | 51   | 7 694 531            | 293 455 582                | 3%           |
| 133                 | Information and promotion activities  | 47   | 6 998 387            | 212 320 517                | 3%           |
| 141                 | Semi-subsistence farming  | 8  | 268 766 385          | 915 274 606                | 29%          |
| 142                 | Producer groups   | 10   | 40 151 798           | 325 507 181                | 12%          |
| 143                 | Providing farm advisory and extension services  | 2  | 624 804              | 131 773 438                | 0%           |
| <b>Total Axis 1</b> |   |  | <b>5 041 451 215</b> | <b>30 905 233 734</b>      | <b>16%</b>   |
| 211                 | Payments to farmers in areas with handicaps (Article 36 (a) (i) of Reg. (EC) No 1698/2005)                              | 58   | 2 535 342 208        | 6 004 100 602              | 42%          |
| 212                 | Payments to farmers in areas with handicaps in mountain areas (Article 36 (a) (ii) of Reg. (EC) No 1698/2005)           | 74   | 2 689 096 097        | 6 642 712 499              | 40%          |
| 213                 | Natura 2000 payments and payments linked to Directive 2000/60/EC (WFD)  | 28   | 38 923 729           | 471 826 214                | 8%           |
| 214                 | Agri-environment commitments  | 88   | 6 766 447 108        | 20 317 820 878             | 33%          |
| 215                 | Animal welfare payments   | 21   | 104 442 195          | 312 974 710                | 33%          |

<sup>1</sup> Source: DG AGRI

|                     |  |    |                       |                       |            |
|---------------------|--|----|-----------------------|-----------------------|------------|
| 216                 | Non-productive investments   | 49 | 26 179 845            | 462 790 092           | 6%         |
| 221                 | First afforestation of non-agricultural land   | 66 | 487 931 021           | 2 417 586 932         | 20%        |
| 222                 | First establishment of agroforestry systems on agricultural land                       | 16 | -                     | 22 743 954            | 0%         |
| 223                 | First afforestation of non-agricultural land   | 39 | 21 584 293            | 360 798 588           | 6%         |
| 224                 | Natura 2000 payments   | 15 | 3 656 799             | 110 646 424           | 3%         |
| 225                 | Forest-environment payments  | 31 | 10 899 107            | 265 436 228           | 4%         |
| 226                 | Restoring forestry potential and introducing prevention actions                        | 58 | 217 636 399           | 1 552 976 933         | 14%        |
| 227                 | Non-productive investments   | 71 | 71 172 180            | 808 852 967           | 9%         |
| <b>Total Axis 2</b> |  |    | <b>12 973 310 981</b> | <b>39 751 267 021</b> | <b>33%</b> |
| 311                 | Diversification into non-agricultural activities                                       | 67 | 84 033 772            | 1 442 111 649         | 6%         |
| 312                 | Business creation and development  | 51 | 57 332 430            | 2 185 744 982         | 3%         |
| 313                 | Encouragement of tourism activities  | 62 | 66 389 380            | 1 300 160 835         | 5%         |
| 321                 | Basic services for the economy and rural population                                    | 64 | 141 770 148           | 2 685 865 662         | 5%         |
| 322                 | Village renewal and development  | 54 | 223 388 217           | 3 046 071 082         | 7%         |
| 323                 | Conservation and upgrading of the rural heritage                                       | 69 | 125 595 829           | 1 265 471 141         | 10%        |
| 331                 | Training and information for economic actors operating in the fields covered by Axis 3 | 35 | 9 328 125             | 136 185 036           | 7%         |
| 341                 | Skills acquisition, animation and implementation                                       | 38 | 21 891 831            | 161 215 956           | 14%        |
| <b>Total Axis 3</b> |  |    | <b>729 729 730</b>    | <b>12 222 826 343</b> | <b>6%</b>  |
| 411                 | Implementing local development strategies - axis 1                                     | 61 | 13 841 102            | 522 378 659           | 3%         |
| 412                 | Implementing local development strategies - axis 2                                     | 43 | 1 446 691             | 165 209 131           | 1%         |
| 413                 | Implementing local development strategies - axis 3                                     | 86 | 96 583 627            | 3 725 553 233         | 3%         |
| 421                 | Implementing cooperation projects  | 87 | 1 038 962             | 265 619 794           | 0%         |
| 431                 | Running the local action group, acquiring skills and animating the territory           | 86 | 47 765 310            | 854 443 162           | 6%         |
| <b>Total Axis 4</b> |  |    | <b>160 675 692</b>    | <b>5 533 203 979</b>  | <b>3%</b>  |
| 511                 | Technical assistance   |    | 197 240 105           | 1 925 361 913         | 10%        |
| 611                 | Direct Payments (RO and BG)  |    | 342 426 737           | 645 581 697           | 53%        |
| <b>Grand Total</b>  |  |    | <b>19 444 834 460</b> | <b>90 983 474 687</b> | <b>21%</b> |

**Table 2(a): Monitoring output indicators 2007-2009, and targets 2007-2013  
(before HC as at end 2009) <sup>2</sup>**

| Code | Measure   | Output   | Unit | Value (2007-2009) | Targets 2007-2013 | % target |
|------|---|--|------|-------------------|-------------------|----------|
| 111  | Vocational training and information actions   | Number of participants in training                             | N.   | 1 136 877         | 5 254 417         | 22%      |
| 112  | Setting up of young farmers   | Number of assisted young farmers                               | N.   | 36 660            | 188 427           | 19%      |
| 113  | Early retirement  | Number of beneficiaries  | N.   | 17 385            | 81 453            | 21%      |
|      |   | Number of hectares released                                    | Ha   | 230 000           | 998 627           | 23%      |
| 114  | Use of advisory services  | Number of farmers supported                                    | N.   | 34 800            | 1 125 166         | 3%       |
|      |   | Number of forest holders supported                             | N.   | 1 070             | 64 042            | 2%       |
| 115  | Setting up of management, relief and advisory services  | Number of newly set up management, relief or advisory services | N.   | 185               | 1 191             | 16%      |
| 121  | Modernisation of agricultural holdings  | Number of farm holdings that received investment support       | N.   | 105 800           | 592 007           | 18%      |
| 122  | Improvement of the economic value of forests  | Number of forest holdings that received investment support     | N.   | 6 020             | 66 921            | 9%       |
| 123  | Adding value to agricultural and forestry products  | Number of enterprises supported                                | N.   | 7 060             | 67 742            | 10%      |
| 124  | Cooperation for development of new products, processes and technologies                         | Number of cooperation initiatives supported                    | N.   | 353               | 5 683             | 6%       |
| 125  | Infrastructure related to the development and adaptation of agriculture and forestry            | Number of operations supported                                 | N.   | 16 623            | 48 097            | 35%      |
| 126  | Restoring agricultural production potential damaged by natural disasters and prevention actions | Supported area of damaged agricultural land                    | Ha   | 336 000           | 1 137 964         | 30%      |
| 131  | Meeting standards based on Community legislation  | Number of beneficiaries  | N.   | 8 214             | 88 133            | 9%       |

<sup>2</sup> Source: RDIS IDIM 2009, outputs indicators for commitments made from 2007 onwards

|     |  |   |    |            |            |     |
|-----|--|---|----|------------|------------|-----|
| 132 | Participation of farmers in food quality schemes                       | Number of supported farm holdings participating in a quality scheme | N. | 134 000    | 393 381    | 34% |
| 133 | Information and promotion activities                                   | Number of supported actions   | N. | 2 041      | 51 635     | 4%  |
| 141 | Semi-subsistence farming   | Number of semi-subsistence farm holdings supported                  | N. | 8 885      | 110 889    | 8%  |
| 142 | Producer groups  | Number of supported producer groups                                 | N. | 280        | 2 162      | 13% |
| LFA | Support to Less Favoured Areas   | Number of supported holdings in LFAs                                | N. | 2 568 319  | 3 600 000  | 72% |
|     |  | Supported agricultural land in LFAs                                 | Ha | 50 900 000 | 55 000 000 | 93% |
| 213 | Natura 2000 payments and payments linked to Directive 2000/60/EC (WFD) | Number of supported holdings in Natura 2000 areas/under WFD         | N. | 29 679     | 52 133     | 57% |
|     |  | Supported agricultural land under Natura 2000/under WFD             | Ha | 536 492    | 1 085 818  | 49% |
| 214 | Agri-environment payments  | Number of farm holdings   | N. | 947 000    | 2 778 267  | 34% |
|     |  | Total area under agri-environmental support                         | Ha | 33 150 000 | 60 000 000 | 55% |
|     |  | Physical area under agri-environmental support                      | Ha | 21 528 712 | 45 000 000 | 48% |
|     |  | Total Number of contracts   | N. | 1 675 447  | 2 931 033  | 57% |
| 215 | Animal welfare payments  | Number of animal welfare contracts                                  | N. | 126 700    | 184 287    | 69% |
| 216 | Non-productive investments   | Number of farm holdings   | N. | 5 642      | 82 026     | 7%  |
| 221 | First afforestation of agricultural land                               | Number of beneficiaries receiving support                           | N. | 14 100     | 130 089    | 11% |
|     |  | Number of ha afforested land  | Ha | 72 500     | 600 000    | 12% |
| 222 | First establishment of agroforestry systems on agricultural land       | Number of beneficiaries   | N. | 0          | 277        | 0%  |
|     |  | Number of ha under new agroforestry systems                         | Ha | 0          | 38 576     | 0%  |
| 223 | First afforestation of non-agricultural land                           | Number of beneficiaries receiving support                           | N. | 2 250      | 48 806     | 5%  |
|     |  | Number of ha of afforested land                                     | Ha | 19 500     | 222 776    | 9%  |
| 224 | Natura 2000 payments   | Number of forest holdings receiving aid in Natura 2000 area         | N. | 4 075      | 52 000     | 8%  |

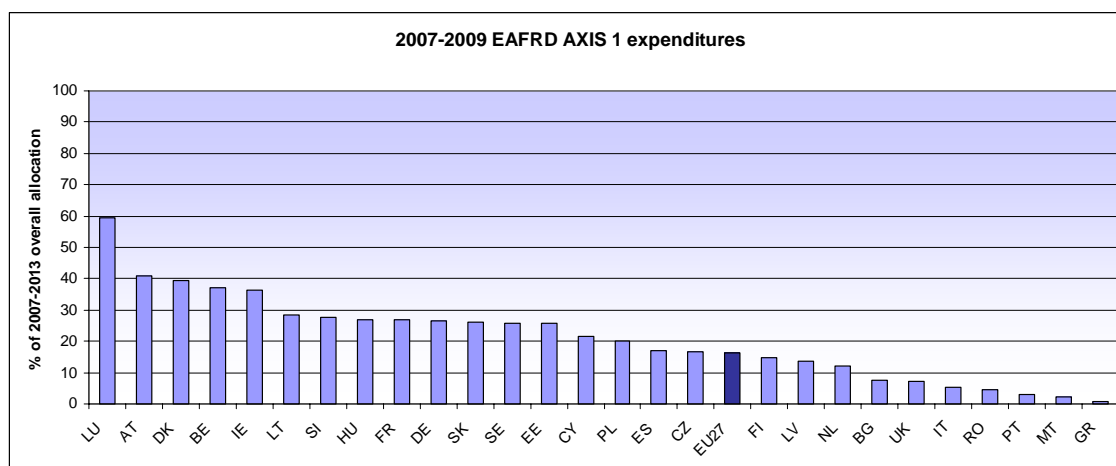
|                   |  |   |    |         |           |     |
|-------------------|--|---|----|---------|-----------|-----|
|                   |  | Supported forest land (ha) in Natura 2000 area        | Ha | 71 926  | 382 491   | 19% |
| 225               | Forest-environment payments  | Number of forest holdings receiving support           | N. | 5 130   | 75 610    | 7%  |
|                   |  | Total forest area under forest environment support    | Ha | 211 886 | 2 135 933 | 10% |
|                   |  | Physical forest area under forest environment support | Ha | 187 256 | 919 762   | 20% |
|                   |  | Number of contracts                                   | N. | 8 750   | 76 939    | 11% |
| 226               | Restoring forestry potential and introducing prevention actions              | Number of prevention/restoration actions              | N. | 19 370  | 132 717   | 15% |
| 227               | Non-productive investments   | Number of supported forest holders                    | N. | 39 411  | 136 876   | 29% |
| 311               | Diversification into non-agricultural activities                             | Number of beneficiaries                               | N. | 4 971   | 83 944    | 6%  |
| 312               | Business creation and development  | Number of micro-enterprises supported/created         | N. | 6 111   | 94 700    | 6%  |
| 313               | Encouragement of tourism activities  | Number of new tourism actions supported               | N. | 3 691   | 44 146    | 8%  |
| 321               | Basic services for the economy and rural                                     | Number of supported actions                           | N. | 8 707   | 65 417    | 13% |
| 322               | Village renewal and development  | Number of villages where actions took place           | N. | 12 790  | 32 400    | 39% |
| 323               | Conservation and upgrading of the rural heritage                             | Number of rural heritage actions supported            | N. | 23 462  | 69 842    | 34% |
| 331               | Training and information   | Number of economic actors participating               | N. | 49 390  | 501 000   | 10% |
| 341               | Skills acquisition, animation and implementation                             | Number of actions supported                           | N. | 5 489   | 16 045    | 34% |
| 414<br>412<br>413 | Implementing local development strategies                                    | Number of projects financed by LAGs                   | N. | 7 090   | 170 900   | 4%  |
|                   |  | Number of beneficiaries supported                     | N. | 8 756   | 1 227 326 | 1%  |
| 421               | Implementing cooperation projects  | Number of cooperation projects                        | N. | 130     | 4 711     | 3%  |
| 431               | Running the local action group, acquiring skills and animating the territory | Number of actions supported                           | N. | 20 434  | 89 895    | 23% |

**Table 2(b): Monitoring result indicators 2007-2009, and targets 2007-2013  
(before HC as at end 2009) <sup>3</sup>**

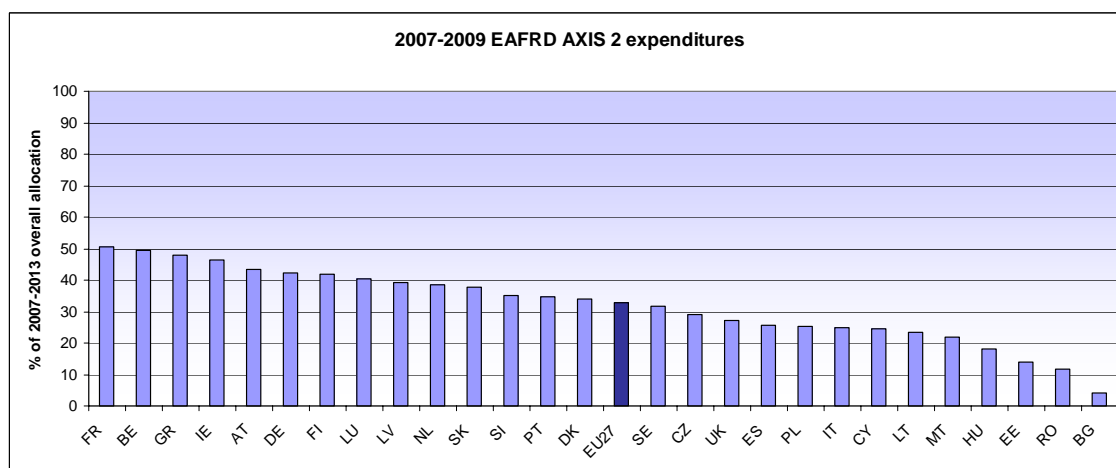
|               | result indicators   |                           | 2007-2009 values | Targets    |
|---------------|---|---------------------------|------------------|------------|
| <b>AXIS 1</b> | Number of participants that successfully ended a training activity related to agriculture and/or forestry |                           | 696 000          | 2 200 000  |
|               | Increase in GVA in supported holdings/enterprises ('000 EUR)  |                           | 1 200 000        | 25 900 000 |
|               | Number of holdings / enterprises introducing new products and/or new techniques                           |                           | 33 400           | 334 000    |
|               | Number of farms entering the market   |                           | 1 215            | 130 000    |
|               | Value of agricultural production under recognized quality label/standards (millions of euros)             |                           | 3 200            | 16 700 000 |
| <b>Axis 2</b> | Agricultural and forestry areas under successful land management contributing to (ha)                     | Biodiversity              | 43 000 000       | 57 000 000 |
|               |   | Water quality             | 27 000 000       | 38 000 000 |
|               |   | Climate change            | 25 000 000       | 26 000 000 |
|               |   | Soil quality              | 30 000 000       | 37 000 000 |
|               |   | Avoidance marginalisation | 45 000 000       | 53 000 000 |
| <b>Axis3</b>  | Increase in Non-agricultural gross value added in supported business ('000 EUR)                           |                           | 98 000           | 3 100 000  |
|               | Gross number of jobs created  |                           | 4 020            | 307 000    |
|               | Additional number of tourist visits   | Number of day visitors    | 2 227 000        | 7 808 000  |
|               |   | Number of overnight stays | 245 000          | 7 366 000  |
|               | Population in rural areas benefiting from improved services   |                           | 22 800 000       | 71 000 000 |
|               | Increase in internet penetration in rural areas ( nbr of persons)   |                           | 1 070 000        | 47 060 000 |
|               | Number of participants that successfully ended a training activity in the field of axis 3                 |                           | 121 300          | 572 000    |

<sup>3</sup> Source: RDIS IDIM 2009, outputs indicators for commitments made from 2007 onwards

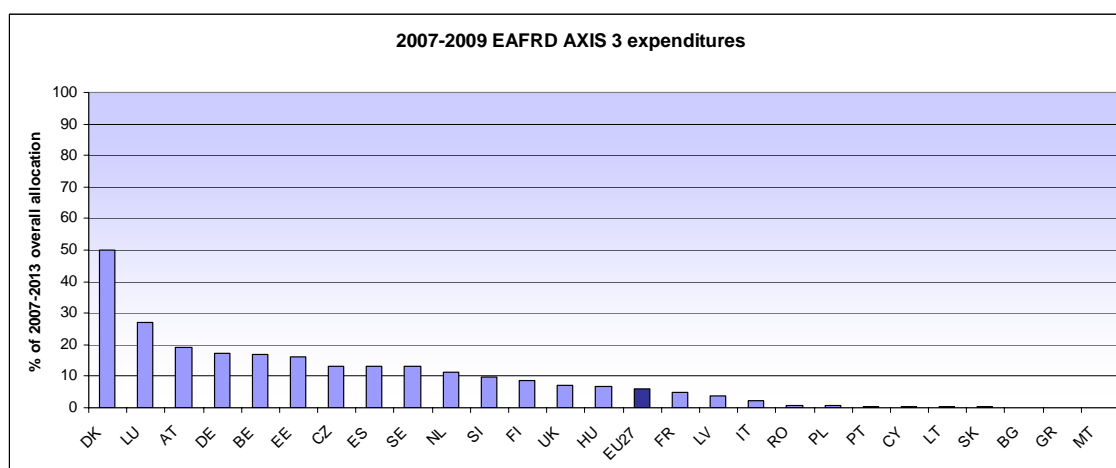
**Table 3: Overall execution of the EAFRD budget by the end of 2009 compared to the overall 2007-2013 allocation, axis per axis<sup>4</sup>**



EU-27 average: 16,3%



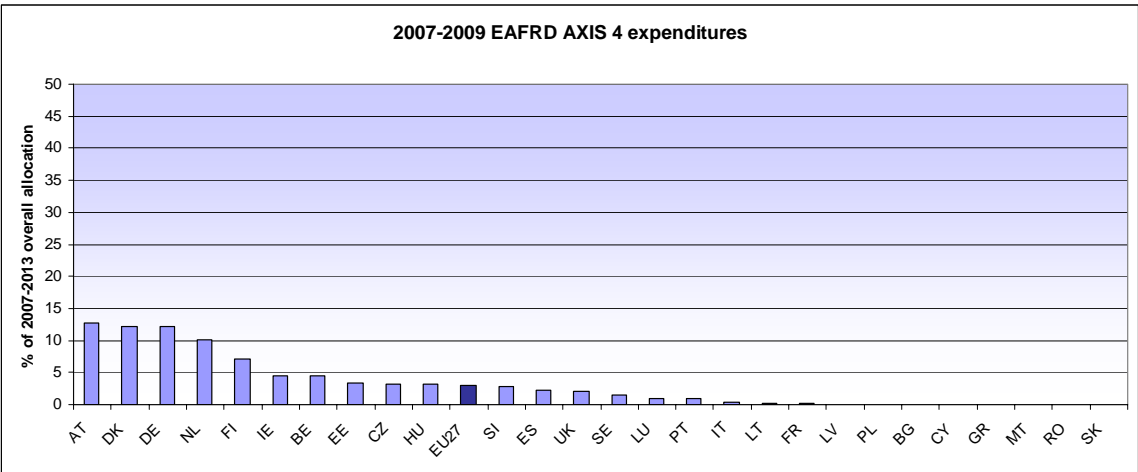
EU-27 average: 32,7%



EU-27 average: 6%

<sup>4</sup> Sources: DG AGRI

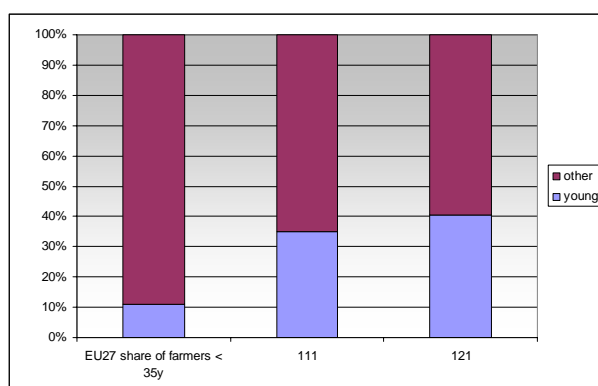




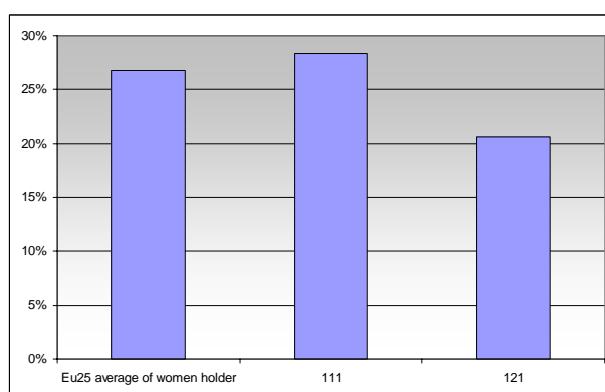
EU-27 average: 2,9%

**Table 4: axis 1 and axis 3 implementation break down according gender and age as laid down in the Art. 81 of the Reg. (EC) No 1698/2005<sup>5</sup>**

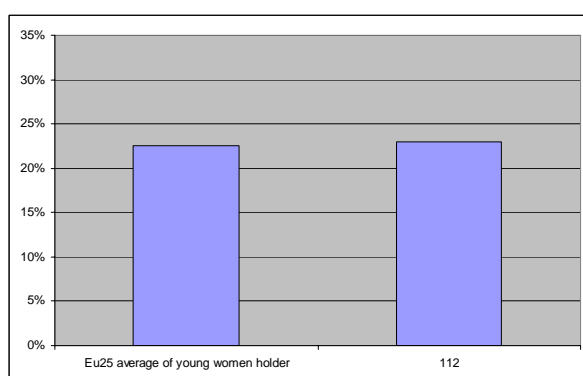
**Share of the beneficiaries under 40 years for the measures training (111) and modernisation (121)**



**Share of women beneficiaries for the measures training (111) and modernisation (121) compared to the EU-25 share of women holders for the whole sector<sup>6</sup>**



**Share of women beneficiaries for the measure young farmer (112) compared to the EU-25 share of young women holders for the whole sector<sup>7</sup>**



<sup>5</sup> Source: RDIS IDIM 2009, outputs indicators for commitments made from 2007 onwards

<sup>6</sup> Eurostat

<sup>7</sup> Eurostat

**Share of women beneficiaries for the measures diversification (311) and micro enterprises support (312)**

