



EUROPEAN COMMISSION

Brussels, 19.10.2011
COM(2011) 650 final

VOL 29/33

ANNEX

of XXX

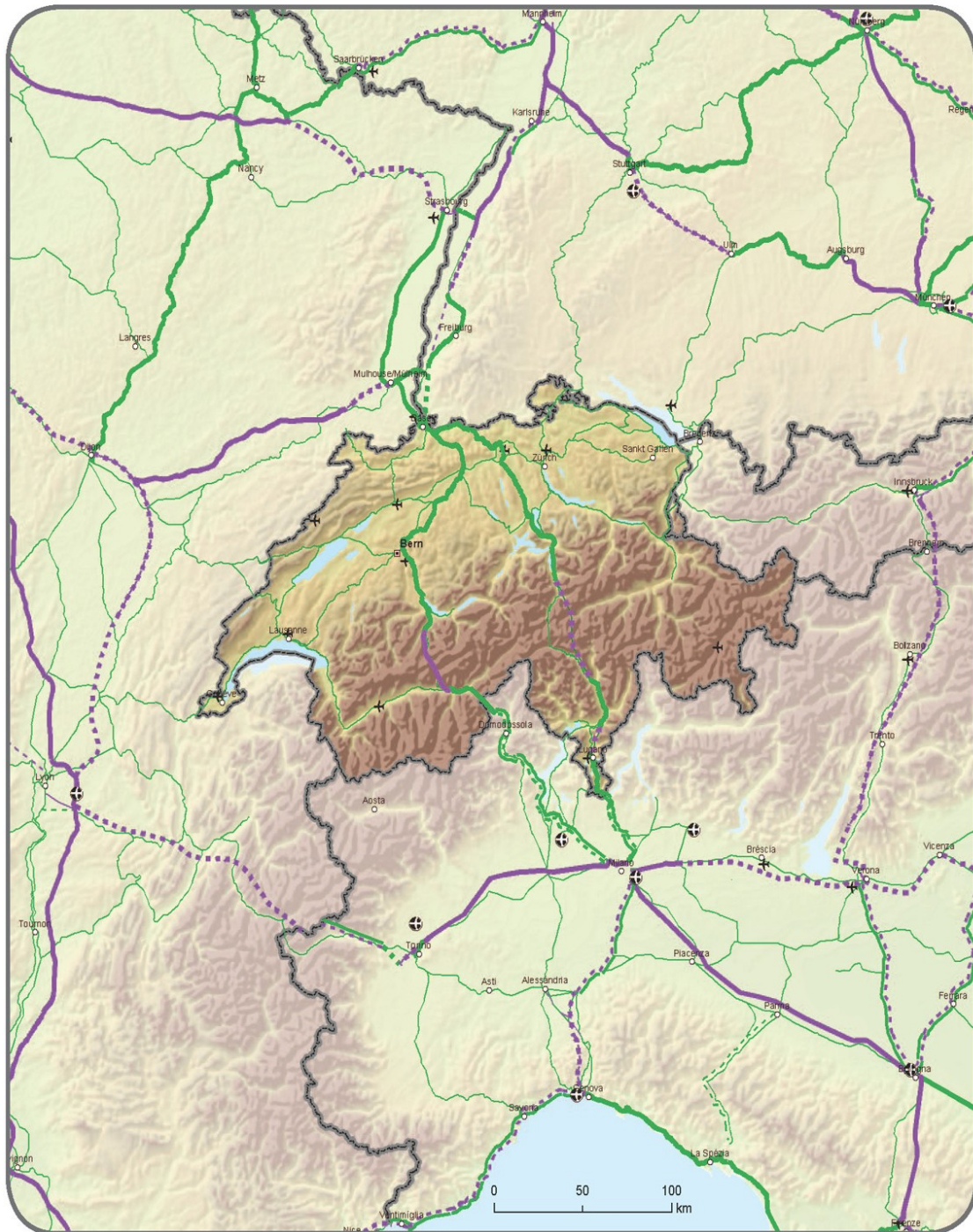
to the

**PROPOSAL FOR A REGULATION OF THE EUROPEAN PARLIAMENT AND OF
THE COUNCIL**

on Union guidelines for the development of the trans-European transport network

{SEC(2011) 1212}

{SEC(2011) 1213}



Compr.	Core		Compr.	Core		Compr.	Core	
—	—	Conventional rail / Completed	—	—	High speed rail / Completed	✈	✈	Airports
- - -	- - -	Conventional rail / To be upgraded	- - -	- - -	To be upgraded to high speed rail			
...	...	Conventional rail / Planned	High speed rail / Planned			

TENtec

