



**COUNCIL OF
THE EUROPEAN UNION**

Brussels, 16 February 2012

**Interinstitutional File:
2011/0294 (COD)**

**15629/11
ADD 23 REV 1**

**TRANS 276
ECOFIN 688
ENV 778
RECH 336
CODEC 1699**

PROPOSAL

No Cion doc.: COM(2011) 650 final/2 - Volume 21/33

Subject: Annex to the Proposal for a Regulation of the European Parliament and of the Council on Union guidelines for the development of the Trans-European Transport Network

Delegations will find attached **a new version** of document COM(2011) 650 final.

Encl.: COM(2011) 650 final/2 - Volume 21/33



EUROPEAN COMMISSION

Brussels, 19.12.2011
COM(2011) 650 final/2

VOL 21/33

CORRIGENDUM:

Annule et remplace le document COM(2011)650 final du 19.10.2011 (actes et annexes)
Concerne toutes les versions linguistiques

ANNEX

to the

**PROPOSAL FOR A REGULATION OF THE EUROPEAN PARLIAMENT AND OF
THE COUNCIL**

on Union guidelines for the development of the trans-European transport network

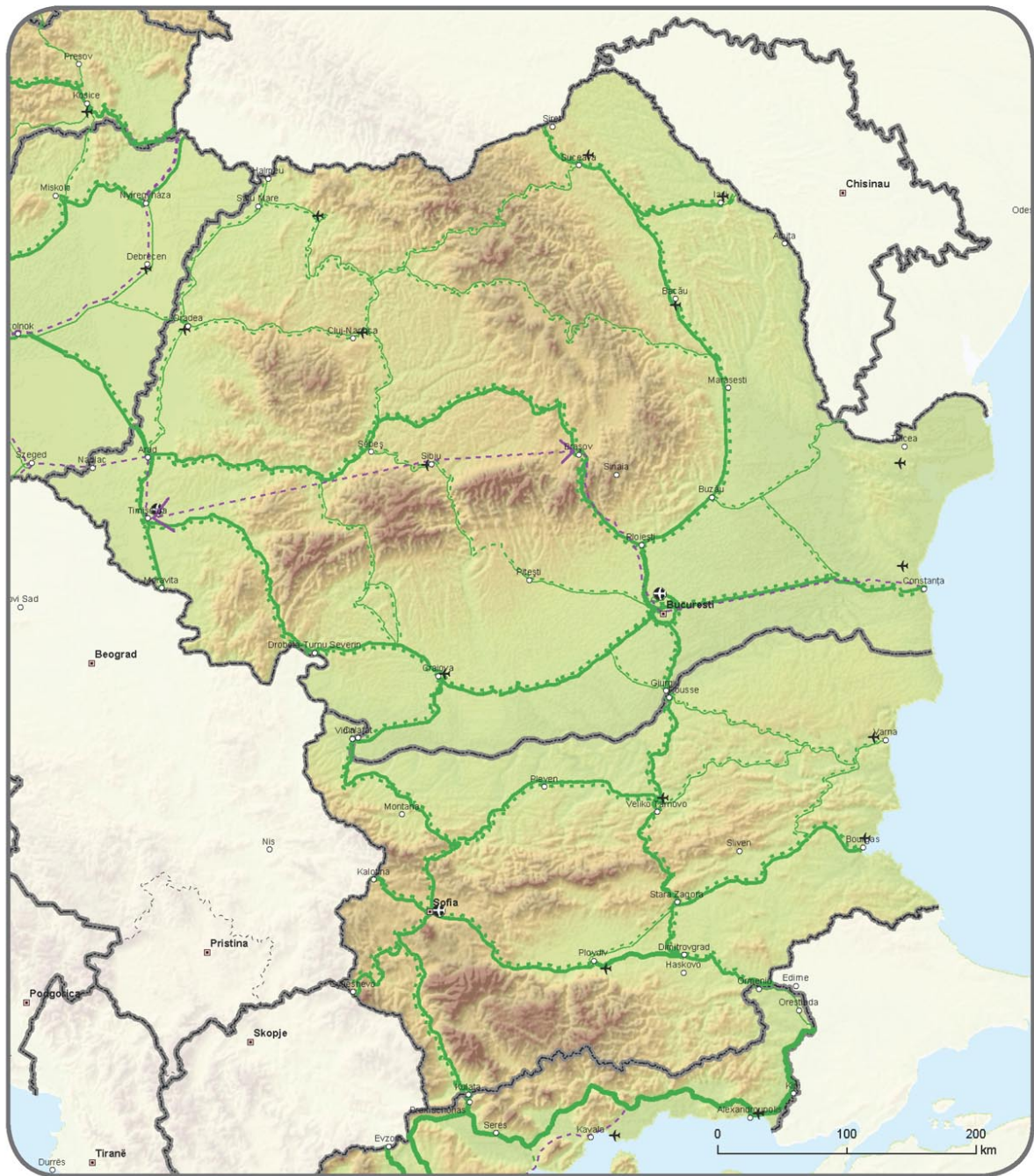
{SEC(2011) 1212}

{SEC(2011) 1213}



TRANS-EUROPEAN TRANSPORT NETWORK
 Comprehensive Network: Railways and airports
 Core Network: Railways (passengers) and airports

BE BG CZ DK DE EE IE EL ES FR IT CY LV LT LU HU MT NL AT PL PT RO SI SK FI SE UK



| Compr. | Core | Compr. | Core | Compr. | Core |
|-------------------------------|------------------------------------|-----------------------------|-----------------------------------|----------|----------|
| | | | | | |
| Conventional rail / Completed | Conventional rail / To be upgraded | High speed rail / Completed | To be upgraded to high speed rail | Airports | Airports |
| | | | | | |
| Conventional rail / Planned | High speed rail / Planned | | | | |

TENtec



TRANS-EUROPEAN TRANSPORT NETWORK
Comprehensive & Core Network:
 Roads, ports, rail-road terminals and airports

BE BG CZ DK DE EE IE EL ES FR IT CY LV LT LU HU MT NL AT PL PT **RO** SI SK FI SE UK



| Road | | Ports | | Airports | |
|--------|------|--------|------|----------|------|
| Compr. | Core | Compr. | Core | Compr. | Core |
| | | | | | |
| | | | | | |
| | | | | | |
| | | | | | |

TENtec