



**COUNCIL OF
THE EUROPEAN UNION**

Brussels, 16 February 2012

**Interinstitutional File:
2011/0294 (COD)**

**15629/11
ADD 30 REV 1**

**TRANS 276
ECOFIN 688
ENV 778
RECH 336
CODEC 1699**

COVER NOTE

No Cion doc.: COM(2011) 650 final/2 - Volume 28/33

Subject: Proposal for a Regulation of the European Parliament and of the Council on Union guidelines for the development of the Trans-European Transport Network

Delegations will find attached **a new version** of document COM(2011) 650 final.

Encl.: COM(2011) 650 final/2 - Volume 28/33



EUROPEAN COMMISSION

Brussels, 19.12.2011
COM(2011) 650 final/2

VOL 28/33

CORRIGENDUM:

Annule et remplace le document COM(2011)650 final du 19.10.2011 (actes et annexes)
Concerne toutes les versions linguistiques

ANNEX

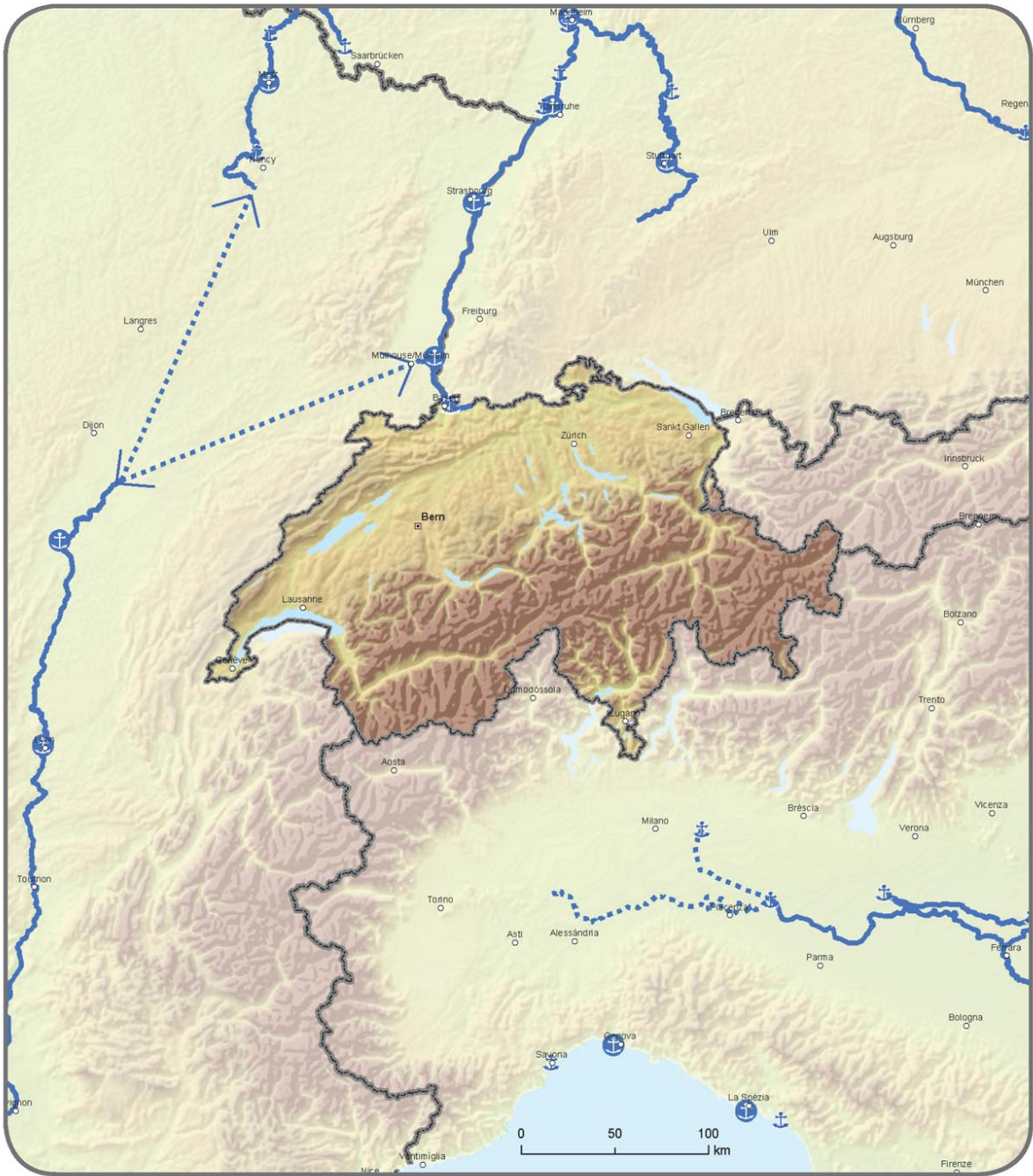
to the

**PROPOSAL FOR A REGULATION OF THE EUROPEAN PARLIAMENT AND OF
THE COUNCIL**

on Union guidelines for the development of the trans-European transport network

{SEC(2011) 1212}

{SEC(2011) 1213}



Core		Compr.	Core
	Inland Waterways / Completed		Ports
	Inland Waterways / To be upgraded		
	Inland Waterways / Planned		

TENtec



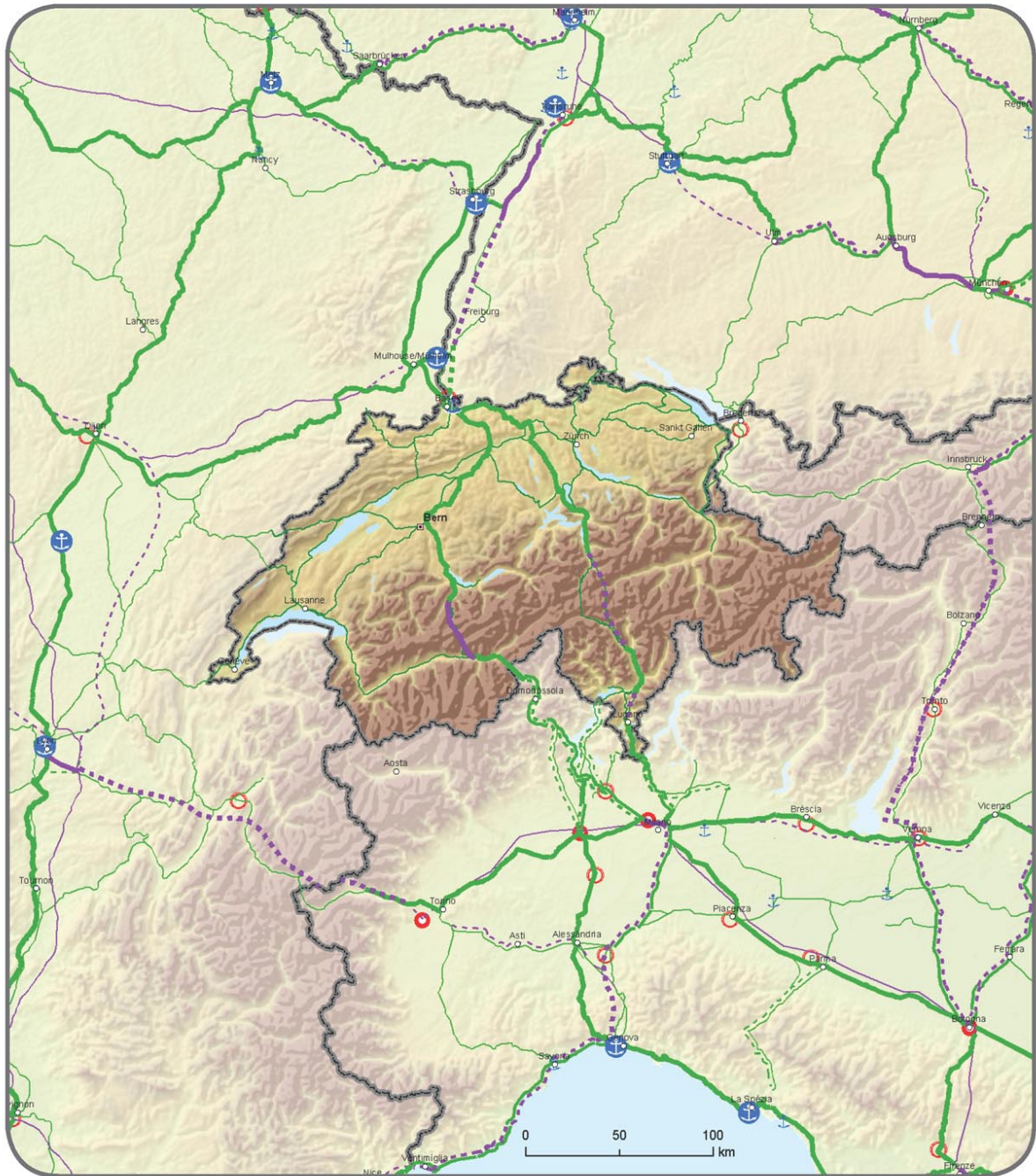
TRANS-EUROPEAN TRANSPORT NETWORK

Indicative Extension to Neighbouring Countries

Comprehensive Network: Railways, ports and rail-road terminals (RRT)

Core Network: Railways (freight), ports and rail-road terminals (RRT)

Schweiz / Suisse / Svizzera / Svizra - Liechtenstein



Compr.		Core		Compr.		Core		Compr.		Core	
		Conventional rail / Completed			High speed rail / Completed			Ports			RRT
		Conventional rail / To be upgraded			To be upgraded to high speed rail			RRT			
		Conventional rail / Planned			High speed rail / Planned						

TENtec