



**COUNCIL OF
THE EUROPEAN UNION**

Brussels, 19 March 2012

**Interinstitutional File:
2011/0294 (COD)**

**7537/12
ADD 28**

**TRANS 77
ECOFIN 243
ENV 201
RECH 85
CODEC 633**

ADDENDUM TO REPORT

from: General Secretariat
to: Council

No. prev. doc.: 7125/12 TRANS 68 ECOFIN 207 ENV 163 RECH 74 CODEC 529
No. Cion prop.: 15629/3/11 TRANS 276 ECOFIN 688 ENV 778 RECH 336 CODEC 1699 REV 3

Subject: Proposal for a Regulation of the European Parliament and of the Council on
Union guidelines for the development of the Trans-European Transport Network
– General Approach

Delegations will find attached part of the Annexes to the above-mentioned proposal.



TRANS-EUROPEAN TRANSPORT NETWORK
Indicative Extension to Neighbouring Countries
 Comprehensive & Core Networks: Inland waterways and ports
 Schweiz / Suisse / Svizzera / Svizra - Liechtenstein





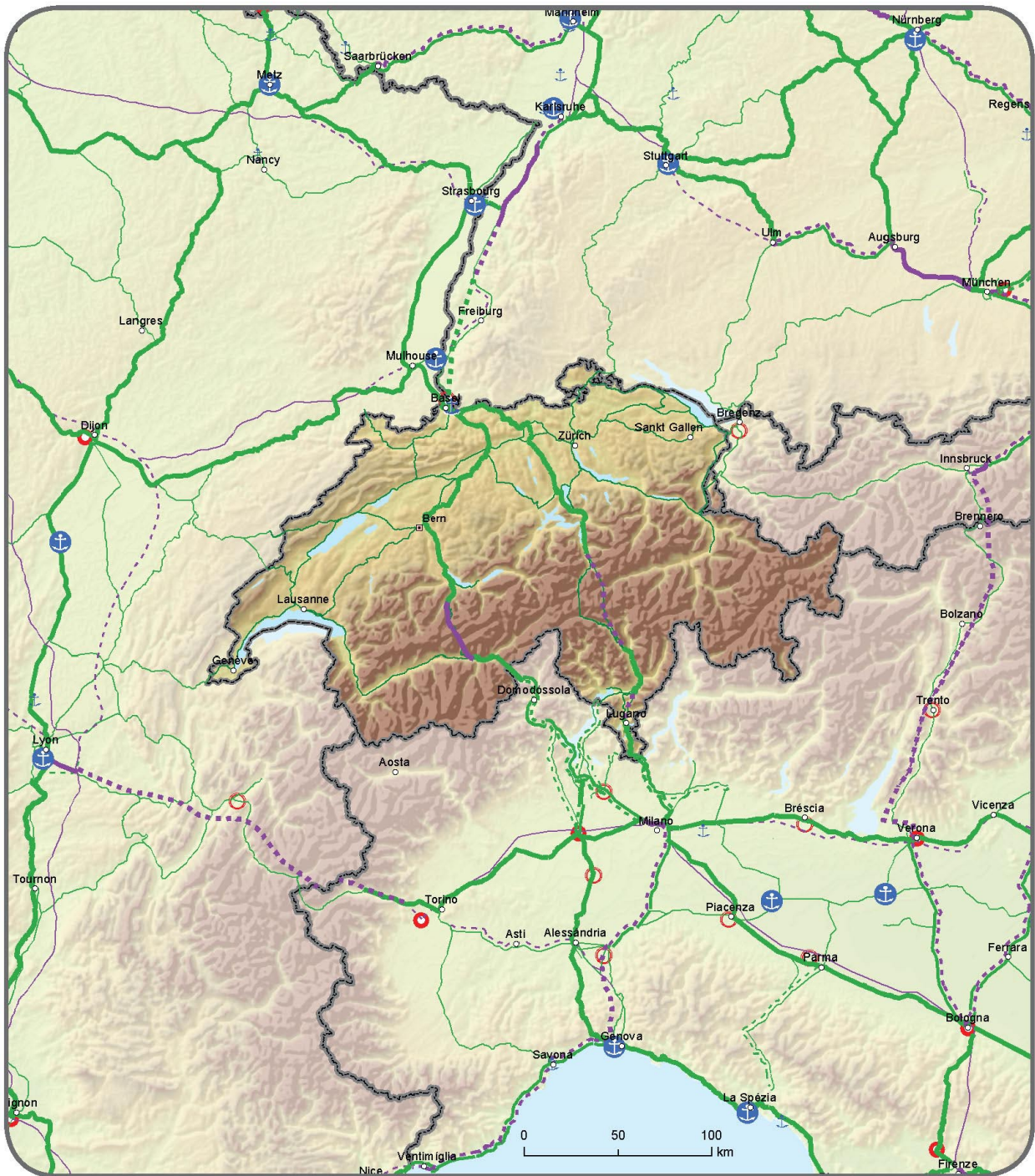
TRANS-EUROPEAN TRANSPORT NETWORK

Indicative Extension to Neighbouring Countries

Comprehensive Network: Railways, ports and rail-road terminals (RRT)

Core Network: Railways (freight), ports and rail-road terminals (RRT)

Schweiz / Suisse / Svizzera / Svizra - Liechtenstein



Compr.	Core	Compr.	Core	Compr.	Core
Conventional rail / Completed	Conventional rail / To be upgraded	High speed rail / Completed	To be upgraded to high speed rail	Ports	Ports
Conventional rail / Planned		High speed rail / Planned		RRT	RRT

