



Council of the
European Union

Brussels, 9 October 2017
(OR. en)

12741/17
ADD 2

SOC 610
EMPL 469
ECOFIN 770
EDUC 355

COVER NOTE

From: The Social Protection Committee
To: Permanent Representative Committee (Part I) / Council
Subject: Key Social Challenges: Report drawn from the 2017 SPC Annual Review
of the Social Protection Performance Monitor (SPPM)
= SPPM Country Profiles (Part 1)

Delegations will find attached the SPPM Country Profiles (part 1) to the SPC "Report on key social challenges" (doc. 12741/17 ADD 1).

The main messages which are drawn from this report are contained in doc. 12741/17.

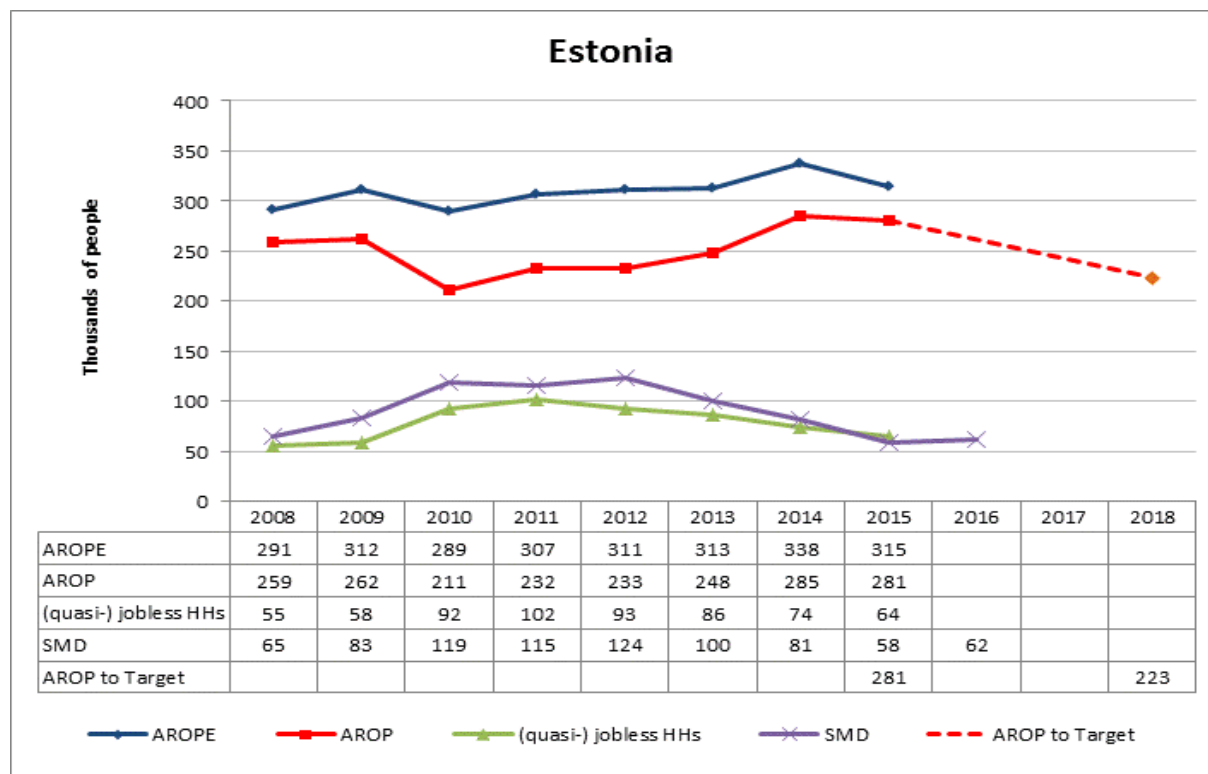
ESTONIA¹

NATIONAL 2020 TARGET FOR THE REDUCTION OF POVERTY AND SOCIAL EXCLUSION

Reduction of the at risk of poverty rate after social transfers to 15%, equivalent to an absolute decrease by 36,248 persons

Source: National Reform Programme (2014)

PROGRESS TOWARDS THE 2020 NATIONAL TARGET FOR THE REDUCTION OF POVERTY AND SOCIAL EXCLUSION

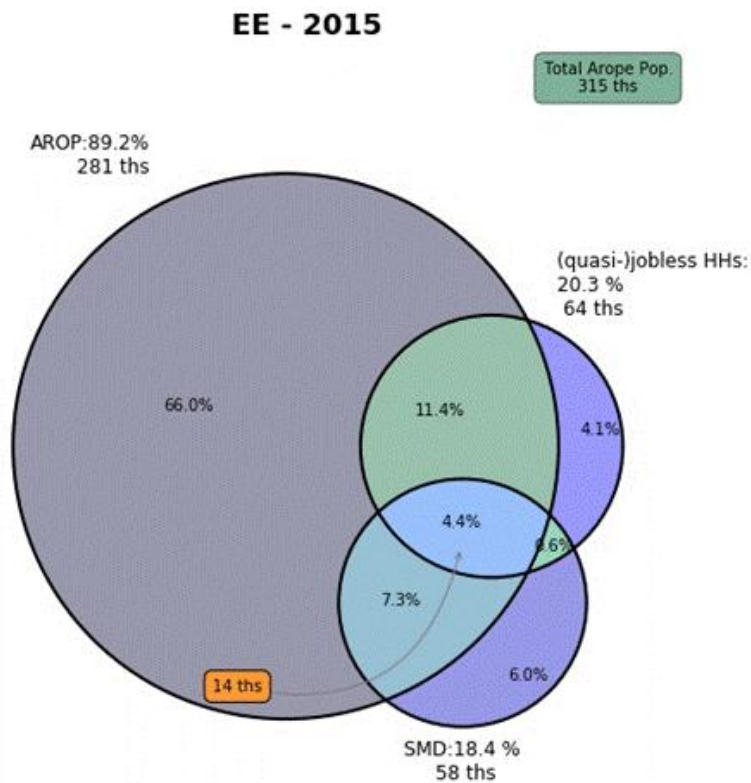


Source: Eurostat (EU-SILC)

Note: i) Progress on the target is monitored on the basis of the EU SILC data with a base year 2008 and target data year 2018; ii) AROPE - at-risk-of-poverty or social exclusion rate; AROP - at-risk-of-poverty rate; (quasi-)jobless HHs - share of population living in (quasi-)jobless households, i.e. very low work intensity (VLWI) households; SMD - severe material deprivation rate; iii) For the at-risk-of-poverty rate (AROP), the income reference year is the calendar year prior to the survey year except for the United Kingdom (survey year) and Ireland (12 months preceding the survey). Similarly, the share of (quasi-) jobless households or the very low work intensity rate (VLWI) refers to the reference year prior to the survey while for the severe material deprivation rate (SMD), the reference is the current year. Major breaks in series in 2014 for variables from EU-SILC due to implementation of a new methodology based on the use of administrative files.

¹ Figures in this profile for data obtained from the Eurostat website are based on data extracted around 3 July 2017, unless otherwise stated.

COMPOSITION OF THE POPULATION AT RISK OF POVERTY OR SOCIAL EXCLUSION (2015)



Source: Eurostat (EU-SILC)

EE													EU28	
		2008	2009	2010	2011	2012	2013	2014	2015	2016	Latest year change	Change 2008 to latest year	2014	2015
AROP	% of total AROPE	89.0	84.0	73.0	75.6	74.9	79.2	84.3	89.2		4.9 pp	n.a.	70.5	72.9
	1000 persons	259	262	211	232	233	248	285	281		-1.4 %	n.a.	85926	86592
(quasi-) jobless HHs	% of total AROPE	18.9	18.6	31.8	33.2	29.9	27.5	21.9	20.3		-1.6 pp	n.a.	34.4	33.4
	1000 persons	55	58	92	102	93	86	74	64		-13.5 %	n.a.	41945	39624
SMD	% of total AROPE	22.3	26.6	41.2	37.5	39.9	32.0	24.0	18.4		-5.6 pp	n.a.	36.5	33.9
	1000 persons	65	83	119	115	124	100	81	58	62	6.9 %	n.a.	44441	40320
AROP and (quasi-) jobless HHs but not SMD	% of total AROPE	10.3	7.7	13.5	14.0	11.6	13.7	9.5	11.4		2.0 pp	n.a.	11.9	12.0
	1000 persons	30	24	39	43	36	43	32	36		12.5 %	n.a.	14534	14211
SMD and AROP but not (quasi-) jobless HHs	% of total AROPE	8.9	9.0	13.2	10.1	11.6	8.3	7.7	7.3		-0.4 pp	n.a.	10.5	10.3
	1000 persons	26	28	38	31	36	26	26	23		-11.5 %	n.a.	12785	12189
AROP and SMD and (quasi-) jobless HHs	% of total AROPE	5.2	6.1	9.0	10.4	10.0	7.7	5.9	4.4		-1.5 pp	n.a.	8.1	7.7
	1000 persons	15	19	26	32	31	24	20	14		-30.0 %	n.a.	9827	9181
SMD and (quasi-) jobless HHs but not AROP	% of total AROPE	0.3	0.3	1.7	2.0	1.3	1.0	0.6	0.6		0.1 pp	n.a.	2.8	2.5
	1000 persons	1	1	5	6	4	3	2	2		0.0 %	n.a.	3430	2952

Source: Eurostat (EU-SILC)

Major breaks in series in 2014 for variables from EU-SILC due to implementation of a new methodology based on the use of administrative files, and which affect overall composition changes for 2008-2015 ("n.a." shown for this period).

MACRO-ECONOMIC AND LABOUR MARKET CONTEXT

EE										EU28	
	2008	2009	2010	2011	2012	2013	2014	2015	2016	2015	2016
Real GDP growth (y-o-y % change)	-5.4	-14.7	2.3	7.6	4.3	1.4	2.8	1.4	1.6	2.2	1.9
Employment growth (y-o-y % change)	-0.2	-10.2	-4.9	6.5	1.6	1.2	0.8	2.9	0.3	1.1	1.2
Unemployment rate (% of labour force)	5.5	13.5	16.7	12.3	10.0	8.6	7.4	6.2	6.8	9.4	8.5
Long-term unemployment rate (% of labour force)	1.7	3.7	7.6	7.1	5.5	3.8	3.3	2.4	2.1	4.5	4.0
Social Protection expenditure (% of GDP)	14.5	18.6	17.4	15.5	14.8	14.7	14.9				

Source: Eurostat (National Accounts, LFS, ESSPROS). Data as at 3 July 2017.

Note: social protection expenditure does not include administrative costs.

SOCIAL PROTECTION EXPENDITURE

EE										EU28	
		2008	2009	2010	2011	2012	2013	2014	2015	2013	2014
Social protection expenditure (in % of GDP)	Total	14.5	18.6	17.4	15.5	14.8	14.7	14.9		27.8	27.6
	Sickness/Health	4.7	5.3	4.7	4.3	4.2	4.1	4.4		8.0	8.1
	Disability	1.4	1.8	1.9	1.8	1.7	1.8	1.8		2.0	2.0
	Old age	6.1	7.8	7.6	6.7	6.5	6.5	6.5		11.1	11.1
	Survivors	0.1	0.1	0.1	0.1	0.1	0.1	0.1		1.6	1.6
	Family/Children	1.7	2.2	2.2	1.9	1.7	1.6	1.6		2.3	2.4
	Unemployment	0.3	1.2	0.7	0.5	0.5	0.5	0.4		1.5	1.4
	Housing	0.0	0.0	0.0	0.0	0.0	0.0	0.0		0.6	0.6
	Social Exclusion n.e.c.	0.1	0.1	0.1	0.1	0.1	0.1	0.1		0.5	0.5
	Means-tested										
	Total	0.1	0.1	0.1	0.2	0.1	0.1	0.1		3.1	3.1
	Sickness/Health	0.0	0.0	0.0	0.0	0.0	0.0	0.0		0.1	0.1
	Disability	0.0	0.0	0.0	0.0	0.0	0.0	0.0		0.5	0.5
	Old age	0.0	0.0	0.0	0.0	0.0	0.0	0.0		0.6	0.5
	Survivors	0.0	0.0	0.0	0.0	0.0	0.0	0.0		0.1	0.1
	Family/Children	0.0	0.0	0.0	0.0	0.0	0.0	0.0		0.5	0.6
	Unemployment	0.0	0.0	0.0	0.0	0.0	0.0	0.0		0.3	0.3
	Housing	0.0	0.0	0.0	0.0	0.0	0.0	0.0		0.6	0.6
	Social Exclusion n.e.c.	0.0	0.1	0.1	0.1	0.1	0.1	0.1		0.4	0.4
	Non-means tested										
	Total	14.4	18.5	17.3	15.3	14.7	14.6	14.8		24.7	24.5
	Sickness/Health	4.7	5.3	4.7	4.3	4.2	4.1	4.4		8.0	8.0
	Disability	1.4	1.8	1.9	1.8	1.7	1.8	1.8		1.6	1.5
	Old age	6.1	7.8	7.6	6.7	6.5	6.5	6.5		10.6	10.5
	Survivors	0.1	0.1	0.1	0.1	0.1	0.1	0.1		1.5	1.5
	Family/Children	1.7	2.2	2.2	1.9	1.7	1.6	1.6		1.8	1.8
	Unemployment	0.3	1.2	0.7	0.5	0.5	0.5	0.4		1.2	1.1
	Housing	0.0	0.0	0.0	0.0	0.0	0.0				
	Social Exclusion n.e.c.	0.0	0.0	0.0	0.0	0.0	0.0	0.0		0.1	0.1

Source: Eurostat (ESSPROS). Data as at 3 July 2017.

Note: The total figures of social expenditure include all benefits excluding administrative costs.

MAIN SOCIAL INDICATORS

INCOME AND LIVING CONDITIONS

EE	%	EU28												
		2008	2009	2010	2011	2012	2013	2014	2015	2016	Latest year change	Change 2008 to latest year		
	At-risk-of-poverty or social exclusion rate	21.8	23.4	21.7	23.1	23.4	23.5	26.0	24.2		-1.8 pp	n.a.	24.4	23.7
	At-risk-of-poverty rate	19.5	19.7	15.8	17.5	17.5	18.6	21.8	21.6		-0.2 pp	n.a.	17.2	17.3
	Value of threshold (single HH) - in PPS	4538	4861	4448	4491	4734	5164	5545	6259		9.2 %	n.a.		
	Value of threshold (2 adults + 2 children younger than 14 years) - in PPS	9530	10208	9340	9431	9942	10845	11644	13144		9.2 %	n.a.		
	Severe material deprivation rate	4.9	6.2	9.0	8.7	9.4	7.6	6.2	4.5	4.8	0.3 pp	n.a.	8.9	8.1
	Share of people aged 0-59 living in (quasi-) jobless households	5.3	5.6	9.0	10.0	9.1	8.4	7.6	6.6		-1.0 pp	n.a.	11.2	10.6
	Persistent at-risk-of-poverty rate	13.6	12.9	9.9	10.5	12.0	9.3	11.2	13.1		1.9 pp	n.a.	10.3	10.9
	At risk-of-poverty gap	20.3	17.0	23.2	26.0	23.8	21.5	22.0	21.0		-1.0 pp	n.a.	24.5	24.8
	Anchored at-risk-of-poverty rate (ref-2008)	19.5	18.9	19.7	23.9	24.2	21.0	21.4	16.8		-4.6 pp	n.a.	19.4	18.5
	Impact of social transfers on poverty reduction (excl. pensions)	21.1	23.9	36.6	29.7	29.4	26.8	23.2	22.3		-0.9 pp	n.a.	34.1	33.46
	S80/S20	5.0	5.0	5.0	5.3	5.4	5.5	6.5	6.2		-4.6 %	n.a.	5.2	5.2
	Overcrowding rate	41.7	41.2	39.7	14.4	14.0	21.1	14.2	13.4		-0.8 pp	n.a.	16.7	16.7
	Housing cost overburden rate	3.6	4.4	6.0	7.4	7.9	7.2	8.3	6.8		-1.5 pp	n.a.	11.5	11.3
	Real change in gross household disposable income	4.6	-8.9	-4.0	3.0	2.1	0.6	6.6	4.3				1.1	2.2

Note: For the poverty threshold values, levels are shown in PPS but changes are shown in national currency terms and accounting for inflation. Major breaks in series in 2014 for variables from EU-SILC due to implementation of a new methodology based on the use of administrative files, and which affect values for changes for 2008-2015/2016 ("n.a." shown for this period).

EE	%	EU28										Change 2008 to latest year	EU28				
		2008	2009	2010	2011	2012	2013	2014	2015	2016	Latest year change		2014	2015			
Children (0-17)	At-risk-of-poverty or social exclusion rate	19.4	24.5	24.0	24.8	22.4	22.3	23.8	22.5					-1.3 pp	n.a.	27.7	26.9
	At-risk-of-poverty rate	17.1	20.6	17.3	19.5	17.0	18.1	19.7	20.0					0.3 pp	n.a.	21.1	21.1
	Severe material deprivation rate	5.3	7.0	10.7	9.1	9.2	7.0	5.7	3.9	4.0				0.1 pp	n.a.	10.4	9.5
	Share of people aged 0-17 living in (quasi-) jobless households	3.8	4.5	8.4	9.2	6.9	6.6	6.5	5.2					-1.3 pp	n.a.	9.8	9.3
	At risk-of-poverty gap	24.4	19.7	28.1	26.7	24.6	27.8	29.1	31.0					1.9 pp	n.a.	25.9	26.0
	Impact of social transfers on poverty reduction (excl. pensions)	35.0	30.6	44.4	35.9	40.6	34.2	30.9	31.0					0.2 pp	n.a.	39.2	39.0
Overcrowding rate	55.2	55.1	53.9	24.0	23.1	33.3	24.6	22.8					-1.8 pp	n.a.	22.6	23.0	
EE	%	EU28										Change 2008 to latest year	EU28				
		2008	2009	2010	2011	2012	2013	2014	2015	2016	Latest year change		2014	2015			
Youth (18-24)	At-risk-of-poverty or social exclusion rate	17.8	21.8	25.6	29.4	27.8	27.1	22.4	22.4					0.0 pp	n.a.	31.9	31.3
	At-risk-of-poverty rate	15.3	15.6	18.7	22.4	20.9	21.4	18.2	19.5					1.3 pp	n.a.	23.7	23.9
	Severe material deprivation rate	3.9	7.4	9.2	11.7	10.9	9.4	6.1	2.9	3.8				0.9 pp	n.a.	11.0	9.9
	Share of people aged 18-24 living in (quasi-) jobless households	3.8	2.8	7.4	7.0	7.6	6.1	5.6	6.4					0.8 pp	n.a.	11.8	10.8
	In-work at-risk-of poverty rate	3.3	3.0	4.3	10.3	9.3	7.2	10.2	12.4					2.2 pp	n.a.	13.0	12.4
	Youth unemployment ratio (15-24)	4.9	10.7	12.4	9.0	8.5	7.4	5.9	5.5	5.8				0.3 pp	0.9 pp	9.3	8.4
NEET rate	11.1	19.0	18.6	14.6	15.0	14.5	14.4	13.3	11.4				-1.9 pp	0.3 pp	16.5	15.8	
Housing cost overburden rate	6.4	4.9	7.8	9.1	12.6	9.3	10.1	9.0					-1.1 pp	n.a.	14.6	14.2	

EE	%	EU28										Change 2008 to latest year	EU28					
		2008	2009	2010	2011	2012	2013	2014	2015	2016	Latest year change		2014	2015				
Working age (18-64)	At-risk-of-poverty or social exclusion rate	17.5	19.9	21.8	24.2	24.2	22.7	24.0	21.0					-3.0 pp	n.a.	25.4	24.7	
	At-risk-of-poverty rate	15.0	15.8	15.6	18.0	17.7	17.3	19.4	17.9						-1.5 pp	n.a.	17.1	17.1
	Severe material deprivation rate	4.5	6.1	9.1	9.3	10.0	8.0	6.3	4.4	4.8					0.4 pp	n.a.	9.2	8.4
	Share of people aged 18-59 living in (quasi-) jobless households	5.8	5.9	9.1	10.3	9.8	9.0	7.9	7.0						-0.9 pp	n.a.	11.7	11.1
	At-risk-of-poverty gap	26.5	23.1	25.9	29.7	29.9	28.3	31.2	29.6						-1.6 pp	n.a.	26.9	27.1
	In-work at-risk-of-poverty rate	7.4	8.3	6.7	8.2	8.5	7.7	11.8	10.3						-1.5 pp	n.a.	9.5	9.5
	Impact of social transfers on poverty reduction (excl. pensions)	24.6	28.2	37.6	30.2	28.9	28.8	25.7	26.3						0.7 pp	n.a.	34.7	34.5
	Overcrowding rate	42.1	41.6	39.9	14.0	13.6	20.8	13.8	13.0						-0.8 pp	n.a.	17.8	17.8
	Housing cost overburden rate	4.0	4.6	6.4	8.3	8.6	7.4	9.1	7.1						-2.0 pp	n.a.	12.0	11.7
EE	%	EU28										Change 2008 to latest year	EU28					
2008	2009	2010	2011	2012	2013	2014	2015	2016	Latest year change	2014	2015							
Elderly (65+)	At-risk-of-poverty or social exclusion rate	40.9	35.6	19.0	17.0	21.8	28.0	35.0	37.0					2.0 pp	n.a.	17.8	17.4	
	At-risk-of-poverty rate	39.0	33.9	15.1	13.1	17.2	24.4	32.6	35.8					3.2 pp	n.a.	13.8	14.1	
	Severe material deprivation rate	5.8	5.6	6.6	5.8	7.1	6.3	6.4	5.2	5.4				0.2 pp	n.a.	6.3	5.5	
	Relative median income of elderly	0.62	0.66	0.73	0.75	0.72	0.69	0.63	0.62					-1.6 %	n.a.	0.94	0.93	
	Aggregate replacement ratio	0.45	0.52	0.55	0.54	0.50	0.50	0.47	0.43					-8.5 %	n.a.	0.56	0.57	
	Overcrowding rate	25.4	24.2	23.6	5.5	5.5	8.8	5.1	4.9					-0.2 pp	n.a.	6.6	6.5	
	Housing cost overburden rate	2.6	2.4	4.1	4.3	6.0	5.9	5.6	4.1					-1.5 pp	n.a.	10.6	10.4	

Source: Eurostat (EU-SILC, LFS).

INVESTING IN CHILDREN

EE	%											EU28						
		2008	2009	2010	2011	2012	2013	2014	2015	2016	Latest year change	Change 2008 to latest year	2014	2015				
Overall objective of combating child poverty and social exclusion and promoting child well-being	At-risk-of-poverty or social exclusion (0-17)	19.4	24.5	24.0	24.8	22.4	22.3	23.8	22.5								27.7	26.9
	At-risk-of-poverty rate (0-17)	17.1	20.6	17.3	19.5	17.0	18.1	19.7	20.0								21.1	21.1
	Severe Material Deprivation (0-17)	5.3	7.0	10.7	9.1	9.2	7.0	5.7	3.9	4.0							10.4	9.5
	Share of people living in (quasi-) jobless households (% of 0-17 population)	3.8	4.5	8.4	9.2	6.9	6.6	6.5	5.2								9.8	9.3
	Persistent at-risk-of-poverty (0-17)	13.5	13.2	9.5	15.5	11.1	7.9	13.1	11.9								13.2	13.3
Access to adequate resources	In-work poverty rate of people living in households with dependent children	9.4	11.6	8.5	9.5	9.4	8.5	12.6	12.1								11.1	11.1
	At-risk-of-poverty rate for children (0-17) living in (quasi-) jobless households	82.8	74.2	73.2	77.5	73.4	82.9	71.3	78.5								67.1	69.9
	At-risk-of-poverty rate for children (0-17) living in households at work	14.3	17.8	12.1	13.7	12.8	13.4	16.1	16.6								16.0	16.0
	Childcare 1-29 hours per week (% 0-3 years children)	1.0	4.0	2.0	4.0	4.0	3.0	5.5	3.6								14.0	14.7
	Childcare more than 30 hours per week (% 0-3 years children)	16.0	21.0	19.0	15.0	14.0	18.0	13.9	17.8								14.4	15.6
	Childcare 1-29 hours per week (% 3 years to mandatory school age children)	4.0	9.0	6.0	9.0	10.0	9.0	9.8	6.8								33.9	33.9
	Childcare more than 30 hours per week (% 3 years to mandatory school age children)	84.0	84.0	86.0	83.0	83.0	82.0	84.2	86.1								49.2	49.4
	Relative median at-risk-of-poverty gap (0-17)	24.4	19.7	28.1	26.7	24.6	27.8	29.1	31.0								25.9	26.0
	Part time due to care responsibilities (total)	11.9	10.1	7.7	8.7	10.1	8.9	10.4	9.5	9.9							21.7	21.7
	Part time due to care responsibilities (male)																4.2	4.4
Access to quality services	Part time due to care responsibilities (female)	16.6	14.9	10.7	11.9	13.3	12.0	14.8	12.3	13.5							27.1	27.2
	Impact of social transfers (excl. pensions) in reducing child poverty	35.0	30.6	44.4	35.9	40.6	34.2	30.9	31.0								39.2	39.0
	Housing cost overburden rate (0-17)	3.2	5.5	6.2	7.3	7.1	7.8	8.1	8.5								10.8	10.7
	NEET rate (15-19)	5.3	6.8	5.6	6.1	6.3	4.4	6.7	5.4	4.1							6.5	6.3
	Early leavers from education and training (18-24)	14.0	13.5	11.0	10.6	10.3	9.7	12.0	12.2	10.9							11.2	11.0
	Self reported unmet need for medical care (16-24)	2.3	2.2	1.5	3.3	4.5	4.5	4.7	5.4								1.5	1.3
	Infant mortality rate	5.0	3.6	3.3	2.5	3.6	2.1	2.7	2.5								3.7	3.6
	Severe housing deprivation (0-17)	14.4	18.6	16.8	8.4	8.5	8.3	7.0	4.7								7.4	7.4
	Overcrowding rate (0-17)	55.2	55.1	53.9	24.0	23.1	33.3	24.6	22.8								22.6	23.0

Source: Eurostat (EU-SILC, LFS, Mortality data)
 Note: Major breaks in series in 2014 for variables from EU-SILC due to implementation of a new methodology based on the use of administrative files, and which affect values for changes for 2008-2015/16 ("n.a." shown for these periods).

LONG-TERM ADEQUACY OF PENSIONS: THEORETICAL REPLACEMENT RATES (2013-2053)

TRR case		Net				Gross			
		2013		2053		2013		2053	
		Men	Women	Men	Women	Men	Women	Men	Women
Average Earnings	Base case I: 40 years up to age 65	61.9	77.1	55.9		46.1	58.4	46.7	
	Base case II: 40 years up to the SPA	50.9	63.4	55.9		37.9	48.0	46.7	
	Increased SPA: from age 25 to SPA	49.2	61.0	55.9		36.7	46.2	46.7	
	AWG career length case	50.9	64.2	59.7	57.8	37.9	49.1	50.5	48.6
	Longer career I: from age 25 to 67			69.7				60.5	
	Shorter career I: from age 25 to 63			49.1				39.9	
	Longer career I: from age 25 to SPA+2			69.7				60.5	
	Shorter career I: from age 25 to SPA-2			49.1				39.9	
	Career break – unemployment: 1 year			54.2				45.0	
	Career break – unemployment: 2 years			53.3				44.1	
	Career break – unemployment: 3 years			52.4				43.2	
	Career break due to child care: 0 year				55.9				46.7
	Career break due to child care: 1 year				56.7				46.0
	Career break due to child care: 2 years				56.0				45.2
	Career break due to child care: 3 years				55.2				44.4
	Short career (30 year career)			45.6				36.4	
	Early retirement due to unemployment			51.0				41.8	
	Early retirement due to disability			55.9				46.7	
Indexation: 10 years after retirement			49.9				40.6		
Low Earnings (66%)	Base case I: 40 years up to age 65	85.4	107.2	64.7		65.2	83.8	52.1	
	Base case II: 40 years up to the SPA	70.2	88.2	64.7		53.6	68.9	52.1	
	Increased SPA: from age 25 to SPA	68.6	85.6	64.7		52.4	67.0	52.1	
	AWG career length case	70.2	89.6	68.4	66.6	53.6	70.1	55.8	54.0
	Longer career I: from age 25 to 67			79.4				67.1	
	Shorter career I: from age 25 to 63			55.6				44.8	
	Longer career I: from age 25 to SPA+2			79.4				67.1	
	Shorter career I: from age 25 to SPA-2			55.6				44.8	
	Career break – unemployment: 1 year			62.6				50.4	
	Career break – unemployment: 2 years			61.5				49.5	
	Career break – unemployment: 3 years			60.4				48.6	
	Career break due to child care: 0 year				64.7				52.1
	Career break due to child care: 1 year				65.0				51.4
	Career break due to child care: 2 years				64.0				50.6
	Career break due to child care: 3 years				63.1				49.9
	Short career (30 year career)	42.5		52.0		33.9		41.8	
	Early retirement due to unemployment			58.5				47.2	
	Early retirement due to disability			64.7				52.1	
Pension rights of surviving spouses				106.0				94.1	
High	Base case I: 40 years up to age 65	36.1	44.2	37.0		26.4	32.4	31.6	
	Base case II: 40 years up to the SPA	29.7	36.3	36.9		21.6	26.7	31.6	

Source: Joint SPC/EC 2015 report on Pension Adequacy in the European Union (2013-2053)

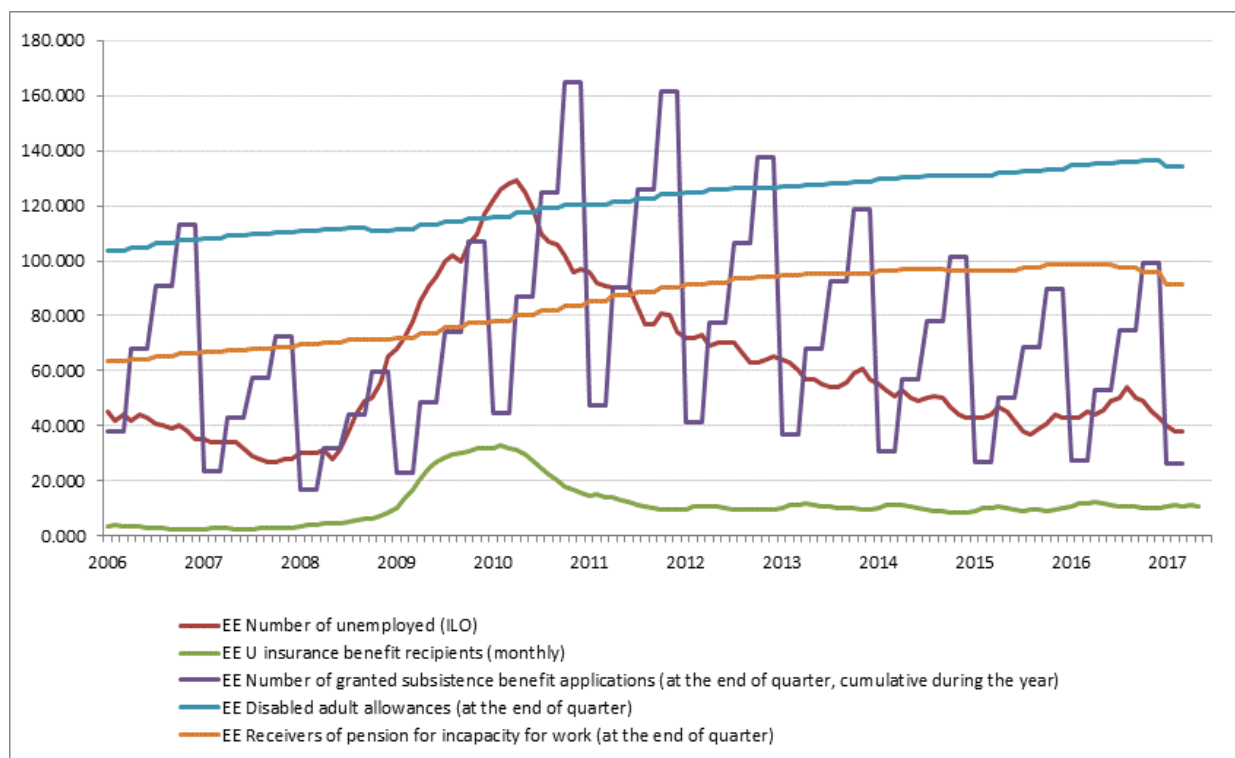
HEALTH CARE SYSTEMS

EE									EU28	
	2008	2009	2010	2011	2012	2013	2014	2015	2014	2015
Healthy life years at birth (years) - male	53.1	55.0	54.2	54.3	53.1	53.9	53.2	53.8	61.4	62.6
Healthy life years at birth (years) - female	57.5	59.2	58.2	57.9	57.2	57.1	57.1	56.2	61.8	63.3
Healthy life years at 65 (years) - male	4.0	5.6	5.3	5.6	5.4	5.1	4.9	5.3	8.6	9.4
Healthy life years at 65 (years) - female	4.3	5.4	5.5	5.7	5.5	5.7	6.0	5.3	8.6	9.4
Life expectancy at birth (years) - male	68.9	69.8	70.9	71.4	71.4	72.8	72.4	73.2	78.1	77.9
Life expectancy at birth (years) - female	79.5	80.2	80.8	81.3	81.5	81.7	81.9	82.2	83.6	83.3
Life expectancy at 65 (years) - male	13.7	14.0	14.3	14.8	14.8	15.2	15.2	15.5	18.2	17.9
Life expectancy at 65 (years) - female	18.9	19.2	19.5	20.1	20.3	20.3	20.4	20.7	21.6	21.2
Self reported unmet need for medical examination or treatment	7.3	4.3	4.8	7.3	8.3	8.4	11.3	12.7	3.6	3.2
Self-perceived health (%)	54.5	51.5	52.7	51.8	52.4	53.5	51.8	51.4	67.4	66.9
Total health care expenditure per capita (PPS)	1039.7	1032.9	994.9	1021.5	1095.1	1235.3	1331.6	1458.1		
Total health care expenditure (% of GDP)	6.1	6.9	6.3	5.8	5.9	6.0	6.2	6.5		

Source: Eurostat (EU-SILC, Mortality data, SHA)

Note: i) Self-perceived health refers to the percentage of the population reporting either good or very good health; ii) Total health care expenditure figures are based on SHA 1.0 from 2008-2012, and on SHA 2011 for 2013 onwards, hence there is a break in series in 2013.

TRENDS IN TAKE-UP OF SELECTED BENEFITS²



² These data have been collected by the SPC in the context of monitoring the social impact of the crisis. It includes only a selection of benefits which have been considered most reactive to the crisis. The number of unemployed (standard definition by the ILO) are given as a background.

EE	Unemployment
definition	Unemployment according to ILO definition - Total
unit	Thousands of persons - seasonally adjusted
source	Eurostat
	Unemployment benefit
definition	Unemployment insurance benefit recipients
unit	thousands of recipients (monthly)
source	Estonian Unemployment Insurance Fund
link	https://www.tootukassa.ee/eng/content/about-tootukassa/statistics
comment	Definition: Unemployment insurance benefit recipients - unemployed persons who received a payment of unemployment insurance benefit during the specified period. Unemployment insurance is a type of compulsory insurance, unemployment insurance is financed from unemployment insurance premiums paid by the insured persons (employees) and the employers. The unemployment insurance benefit is paid to unemployed persons whose unemployment insurance period in the three preceding years is at least 12 months and whose last relationship did not end on their own initiative or mutual agreement.
Note	2014 data has been updated on 17.11.2015 due to minor corrections in the database, 2015 data has been updated 12.06.2017 due to minor corrections in the database (corrections marked as red)
	Social assistance benefit
definition	Subsistence benefit (to maintain subsistence level) receivers
unit	Number of granted applications (thousands, cumulative during the year)
source	Ministry of Social Affairs
link	http://www.sm.ee/et/toetuste-statistika http://pub.stat.ee/px-web.2001/I_Databas/Social_life/15Social_protection/02Social_assistance/05Subsistence_benefits/05Subsistence_benefits.asp
comment	A person living alone or a family whose monthly disposable income, after deduction of the fixed expenses connected with permanent dwelling during the current month, is below the subsistence level has right to receive a subsistence benefit. The subsistence level increased (by 20%) from the beginning of 2011. The subsistence level increased also in 2014 (by 17 % compared to the previous year) and as from 2015 the subsistence level will be higher for underage children. The subsistence level increased (by 31%) from the beginning of 2016. Note: In April 2010, a new social services and benefit register was introduced. Therefore the data from the 2nd quarter 2010 is not fully comparable with the previous data.

Disability benefit	
definition	Recipients of benefits for disabled persons
unit	Thousands of recipients at the end of quarter
source	Source: Social Insurance Fund
link	http://www.sotsiaalkindlustusamet.ee/et/organisatsioon-kontaktid/statistika-ja-aruandlus
comment	Disability is the loss of or an abnormality in an anatomical, physiological or mental structure of function of a person, which in conjunction with different relational and environmental restrictions prevents participation in social life on equal bases with others. From 2008 the disabled adult allowance was replaced by disability allowance for a person of working age and disability allowance for a person of retirement age. Therefore the indicator since 2008 includes recipients of three types of benefits: recipients of the allowance for disabled persons of at least 16 years of age, for disabled persons of working age and for disabled persons of retirement age.
Incapacity for work	
definition	Receivers of pension for incapacity for work
unit	Thousands of recipients at the end of quarter
source	Social Insurance Board
link	http://www.sotsiaalkindlustusamet.ee/et/organisatsioon-kontaktid/statistika-ja-aruandlus
comment	The right for the pension for incapacity for work has a person, who is at least 16 years of age and has been declared to be permanently incapable to work, loss of whose working capacity is 40 to 100 per cent and who by the initial date of granting of the pension has acquired the following pensionable service or accumulation period in Estonia.

SUMMARY TABLE OF MAIN SOCIAL TRENDS

Group	Indicator	EE											EU27		
		2008	2009	2010	2011	2012	2013	2014	2015	2016	change 2014-2015 (2015-2016 for SMD & LFS-based figures)	change 2008 to latest year	2015	latest year change	change 2008 to latest year
Europe 2020	At risk of poverty or social exclusion (in %)	21.8	23.4	21.7	23.1	23.4	23.5	26.0	24.2	n.a.	-1.8 pp	1.7 pp	23.7	-0.7 pp	0.0 pp
	At-risk-of-poverty rate (in %)	19.5	19.7	15.8	17.5	17.5	18.6	21.8	21.6	n.a.	-0.2 pp	-0.9 pp	17.3	0.1 pp	0.8 pp
	At-risk-of-poverty threshold for a single person household (levels in pps, changes as real change in national currency in %)	4538	4861	4448	4491	4734	5164	5545	6259	n.a.	9.2 %	1.9 %	n.a.	n.a.	n.a.
	Severe material deprivation rate (in %)	4.9	6.2	9.0	8.7	9.4	7.6	6.2	4.5	4.8	0.3 pp	2.7 pp	8.0	-0.3 pp	-0.8 pp
Intensity of poverty risk	Population living in (quasi-) jobless households (in %)	5.3	5.6	9.0	10.0	9.1	8.4	7.6	6.6	n.a.	-1.0 pp	3.1 pp	10.6	-0.6 pp	1.4 pp
	Relative median at-risk-of-poverty gap (in %)	20.3	17.0	23.2	26.0	23.8	21.5	22.0	21.0	n.a.	-1.0 pp	1.2 pp	24.8	0.3 pp	2.9 pp
Persistence of poverty risk	Persistent at-risk-of-poverty rate (in %)	13.6	12.9	9.9	10.5	12.0	9.3	11.2	13.1	n.a.	1.9 pp	-4.3 pp	10.9	0.6 pp	2.2 pp
	Income quintile ratio (S80/S20)	5.0	5.0	5.0	5.3	5.4	5.5	6.5	6.2	n.a.	-4.6 %	10.0 %	5.2	0.0 %	4.0 %
Income inequalities	At-risk-of poverty or social exclusion rate of children (% of people aged 0-17)	19.4	24.5	24.0	24.8	22.4	22.3	23.8	22.5	n.a.	-1.3 pp	2.9 pp	26.9	-0.8 pp	0.5 pp
	Impact of social transfers (excl. pensions) on poverty reduction (%)	21.1	23.9	36.5	29.7	29.4	26.8	23.2	22.3	n.a.	-0.9 pp	5.7 pp	33.5	-0.6 pp	-1.3 pp
Effectiveness of social protection system	Impact of social transfers (incl. pensions) on poverty reduction (%)	46.3	47.5	61.3	57.4	56.4	53.0	46.7	45.2	n.a.	-1.5 pp	6.8 pp	61.2	-0.3 pp	0.5 pp
	At-risk-of-poverty rate for the population living in (quasi-) jobless households	82.3	73.5	69.9	72.8	73.0	78.4	70.9	77.2	n.a.	6.3 pp	-3.9 pp	58.9	0.9 pp	3.2 pp
Social consequences of labour market	In-work at-risk-of poverty rate (in %)	7.4	8.3	6.7	8.2	8.5	7.7	11.8	10.3	n.a.	-1.5 pp	0.3 pp	9.5	-0.1 pp	1.0 pp
	Long-term unemployment rate (in %)	1.7	3.7	7.6	7.1	5.5	3.8	3.3	2.4	2.1	-0.3 pp	0.4 pp	4.5	-0.6 pp	1.3 pp
Youth exclusion	Early school leavers (in %)	14.0	13.5	11.0	10.6	10.3	9.7	12.0	12.2	10.9	-1.3 pp	-3.1 pp	11.0	-0.2 pp	-4.0 pp
	Youth unemployment ratio (15-24)	4.9	10.7	12.4	9.0	8.5	7.4	5.9	5.5	5.8	0.3 pp	0.9 pp	8.4	-0.7 pp	0.8 pp
Active ageing	NEETs (15-24)	8.7	14.5	14.0	11.6	12.2	11.3	11.7	10.8	9.1	-1.7 pp	0.4 pp	12.0	-0.5 pp	0.6 pp
	Employment rate of older workers (55-64) in %	62.3	60.3	53.8	57.5	60.5	62.6	64.0	64.5	65.2	0.7 pp	2.9 pp	53.4	2.0 pp	9.9 pp
Pension adequacy	At risk of poverty or social exclusion for the elderly (65+) in %	40.9	35.6	19.0	17.0	21.8	28.0	35.0	37.0	n.a.	2.0 pp	-12.9 pp	17.3	-0.4 pp	-6.0 pp
	Median relative income of elderly people	0.62	0.66	0.73	0.75	0.72	0.69	0.63	0.62	n.a.	-1.6 %	11.3 %	0.93	-1.1 %	9.4 %
Health	Aggregate replacement ratio	0.45	0.52	0.55	0.54	0.50	0.50	0.47	0.43	n.a.	-8.5 %	11.1 %	0.57	1.8 %	16.3 %
	Self reported unmet need for medical care	7.3	4.3	4.8	7.3	8.3	8.4	11.3	12.7	n.a.	1.4 pp	5.4 pp	3.2	-0.4 pp	0.1 pp
	Healthy life years at 65 - males	4.0	5.6	5.3	5.6	5.4	5.1	4.9	5.3	n.a.	8.2 %	32.5 %	n.a.	n.a.	n.a.
	Healthy life years at 65 - females	4.3	5.4	5.5	5.7	5.5	5.7	6.0	5.3	n.a.	-11.7 %	23.3 %	n.a.	n.a.	n.a.
Access to decent housing	Housing cost overburden rate	3.6	4.4	6.0	7.4	7.9	7.2	8.3	6.8	n.a.	-1.5 pp	3.6 pp	11.3	-0.3 pp	0.8 pp
	Real change in gross household disposable income (in %)	4.6	-8.9	-4.0	3.0	2.1	0.6	6.6	4.3	n.a.	4.3 %	2.7 %	n.a.	n.a.	n.a.

Note: For the poverty threshold values, levels are shown in PPS but changes are shown in national currency terms and accounting for inflation. For consistency with the main SPPM dashboard latest changes refer to 2014-2015 for EU-SILC based indicators (except SMD) and 2015-2016 for SMD and LFS-based indicators, while changes since 2008 refer to 2008-2013 and 2008-2016 respectively. (Major break in series in 2014 for variables in EU-SILC due to implementation of a new methodology based on the use of administrative files. Hence change in EU-SILC variables for 2008-2013 used for the longer period compared to 2008.)

KEY SOCIAL CHALLENGES AND GOOD SOCIAL OUTCOMES, ESTONIA

2017

Social policy area	Key social challenge	Good social outcome
1. Preventing poverty and social exclusion through inclusive labour markets, adequate and sustainable social protection and high quality services	<p>At-risk-of-poverty rate (60% of median income) is worse than the EU average.</p> <p>The S20/S80 income quintile gap is worse than the EU average.</p> <p><i>There is a high risk of poverty or social exclusion for persons with disabilities³ as well as a much higher than average gap between the risk of poverty or social exclusion for persons with and without disabilities⁴.</i></p>	<p>While showing some significantly positive developments, the share of people (aged 0-59) living in jobless households is around the EU average. The same indicator for women in the same age bracket shows significantly better results than the EU average.</p>
2. Breaking the intergenerational transmission of poverty – tackling child poverty		
3. Active inclusion – tackling poverty in working age		<p>Adults (aged 18-59) not students living in jobless households around the EU average but shows significantly positive development.</p>
4. Elderly poverty/ adequate income and living conditions of the elderly	<p>At-risk-of-poverty rate for elderly, both for men and women (65+) is the highest in the EU.</p> <p>Median relative income of elderly people (65+) is the lowest in the EU.</p>	
5. Health & LTC	<p>Healthy life years for men and self-reported unmet need for medical care (in particular unmet need due to waiting time) are significantly worse than the EU average.</p> <p><i>There are weaknesses in the coordination of care, sometimes leading to unnecessary hospitalisation and ambulatory specialist care, and reduced quality of patient care after a hospital stay⁵.</i></p> <p><i>The provision of long-term care is not adequate to the needs of the population⁶.</i></p>	
6. Other key issues		

Note: The assessment of the key social challenges and good social outcomes within EU Member States is based on a full analysis of all the indicators in the social policy area of the Joint Assessment Framework tool, not only those included in the tables in this Country Profile.

³ Disability measured through a concept of long-standing limitation in performing usual activities: “*Limitation in activities people usually do because of health problems for at least the past six months*” (EU-SILC). Level of activity limitation considered: “*some or severe*”.

⁴ Source: Eurostat 2015.

⁵ Source: World Bank Group (2015), the State of Health Care Integration in Estonia.

⁶ Source: Country Report 2017; Eurostat Labour Force Survey 2016.

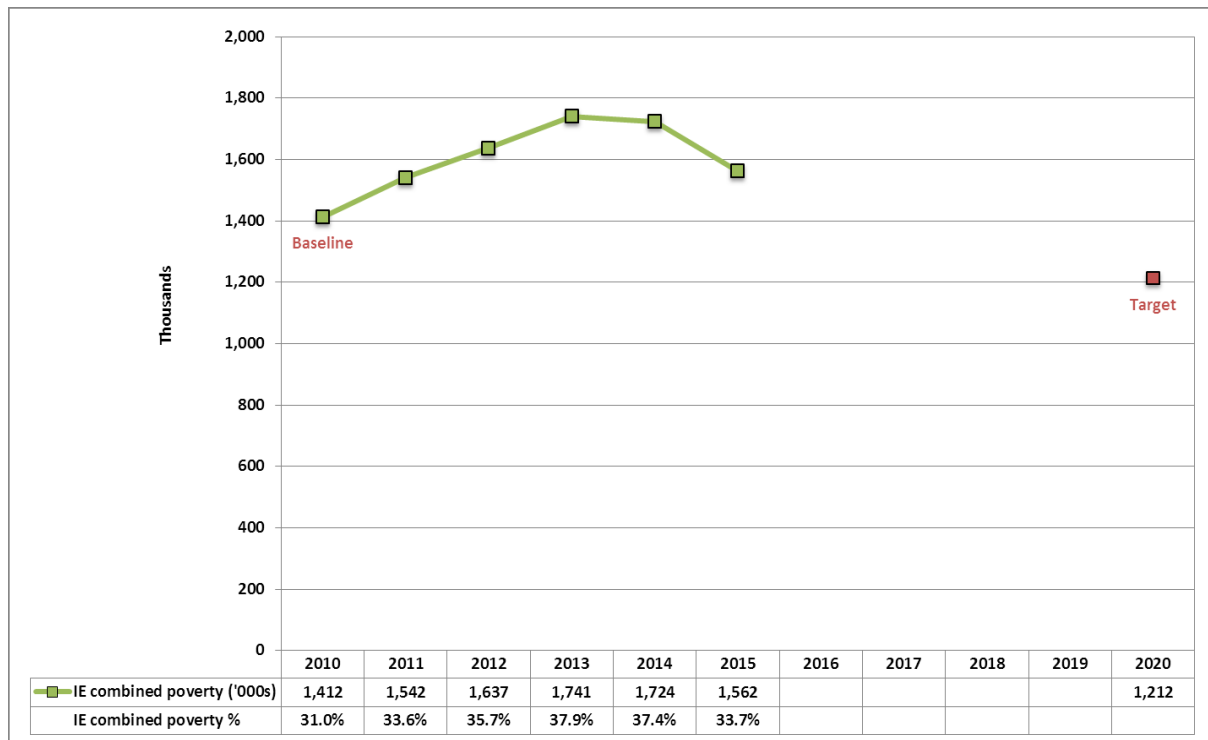
IRELAND⁷

NATIONAL 2020 TARGET FOR THE REDUCTION OF POVERTY AND SOCIAL EXCLUSION

Reduce the number of persons in combined poverty (either consistent poverty, at-risk-of-poverty or basic deprivation) by at least 200,000, from the 2010 baseline year.

Source: National Reform Programme (2016)

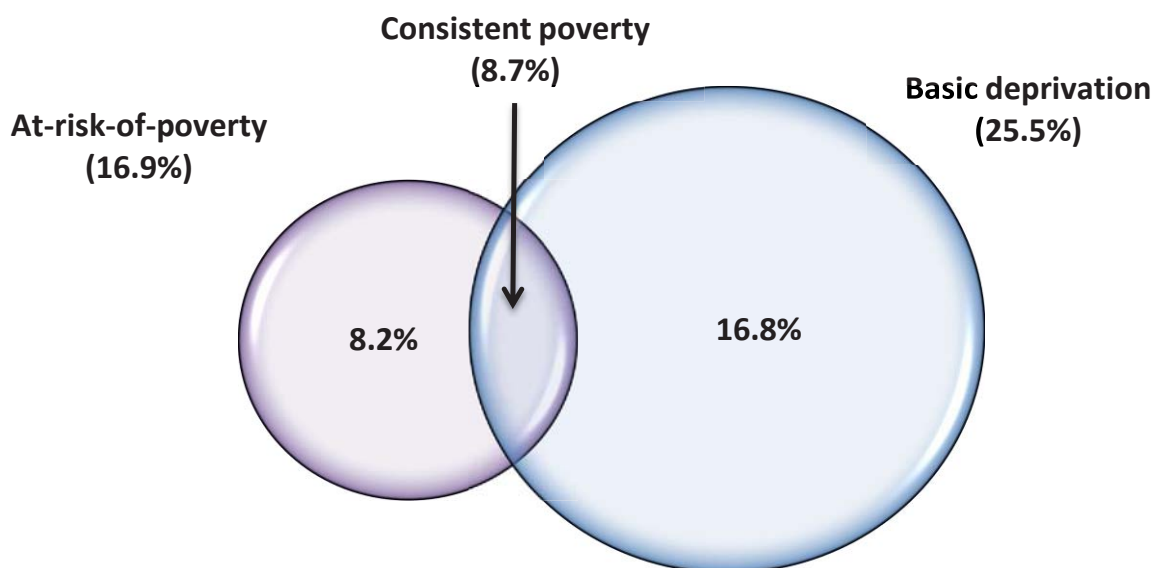
PROGRESS TOWARDS THE EUROPE 2020 NATIONAL TARGET FOR THE REDUCTION OF POVERTY AND SOCIAL EXCLUSION



Source: Irish National Reform Programme 2017 (based on SILC data)

⁷ Figures in this profile for data obtained from the Eurostat website are based on data extracted around 3 July 2017, unless otherwise stated.

**COMPOSITION OF THE POPULATION AT RISK OF POVERTY OR SOCIAL EXCLUSION USING IRISH INDICATORS
(2015)**



Source: Data from CSO SILC 2015

IE	%	2008	2009	2010	2011	2012	2013	2014	2015
Combined poverty	% of total population	24.0%	25.7%	31.0%	33.6%	35.7%	37.9%	37.4%	33.7%
	1,000 persons	1,076	1,165	1,412	1,542	1,637	1,741	1,724	1,562
Consistent poverty	% of total population	4.2%	5.5%	6.3%	6.9%	8.5%	9.1%	8.8%	8.7%
	1,000 persons	188	249	287	317	390	418	406	403
At-risk-of-poverty	% of total population	14.4%	14.1%	14.7%	16.0%	17.3%	16.5%	17.2%	16.9%
	1,000 persons	646	639	670	734	793	758	793	783
Basic deprivation	% of total population	13.8%	17.1%	22.6%	24.5%	26.9%	30.5%	29.0%	25.5%
	1,000 persons	619	775	1,029	1,124	1,233	1,401	1,337	1,182

Source: Data from CSO SILC 2008 - 2015⁸

⁸ This data includes revised figures for 2012 to 2014. These revisions arose following the identification of a processing error during the production of data for 2015. Trends in the revised series mirror those in previously published data.

MACRO-ECONOMIC AND LABOUR MARKET CONTEXT

IE											EU28	
	2008	2009	2010	2011	2012	2013	2014	2015	2016	2015	2016	
Real GDP growth (y-o-y % change)	-4.4	-4.6	2.0	0.0	-1.1	1.1	8.5	26.3	5.2	2.2	1.9	
Employment growth (y-o-y % change)	-0.6	-7.8	-4.1	-0.5	-0.6	2.5	1.7	2.5	2.7	1.1	1.2	
Unemployment rate (% of labour force)	6.4	12.0	13.9	14.7	14.7	13.1	11.3	9.4	7.9	9.4	8.5	
Long-term unemployment rate (% of labour force)	1.7	3.5	6.8	8.6	9.0	7.8	6.6	5.3	4.2	4.5	4.0	
Social Protection expenditure (% of GDP)	18.8	22.3	22.8	22.2	21.9	20.9	19.3					

Source: Eurostat (National Accounts, LFS, ESSPROS). Data as at 3 July 2017.

SOCIAL PROTECTION EXPENDITURE

IE												EU28	
		2008	2009	2010	2011	2012	2013	2014	2015	2013	2014		
Social protection expenditure (in % of GDP)	Total	18.8	22.3	22.8	22.2	21.9	20.9	19.3			27.8	27.6	
	Sickness/Health	7.1	7.9	7.6	7.5	7.4	7.1	6.7			8.0	8.1	
	Disability	1.1	1.2	1.3	1.2	1.2	1.2	1.2			2.0	2.0	
	Old age	4.4	4.9	5.8	5.7	5.8	5.7	5.3			11.1	11.1	
	Survivors	0.9	1.0	0.5	0.5	0.5	0.5	0.4			1.6	1.6	
	Family/Children	2.9	3.4	3.2	3.0	3.0	2.8	2.5			2.3	2.4	
	Unemployment	1.8	3.0	3.7	3.5	3.3	3.1	2.7			1.5	1.4	
	Housing	0.2	0.2	0.6	0.5	0.5	0.4	0.4			0.6	0.6	
	Social Exclusion n.e.c.	0.4	0.6	0.3	0.3	0.3	0.2	0.2			0.5	0.5	
	Means-tested												
	Total	4.7	6.0	6.8	6.9	6.8	6.6	6.0			3.1	3.1	
	Sickness/Health	1.0	1.2	1.1	1.0	1.0	1.0	0.9			0.1	0.1	
	Disability	0.6	0.7	0.7	0.7	0.7	0.7	0.7			0.5	0.5	
	Old age	0.7	0.8	0.9	0.9	0.9	0.8	0.8			0.6	0.5	
	Survivors	0.0	0.0	0.0	0.0	0.0	0.0	0.0			0.1	0.1	
	Family/Children	1.0	1.3	1.3	1.3	1.3	1.2	1.1			0.5	0.6	
	Unemployment	0.8	1.3	1.9	2.3	2.3	2.3	2.1			0.3	0.3	
	Housing	0.2	0.2	0.6	0.5	0.5	0.4	0.4			0.6	0.6	
	Social Exclusion n.e.c.	0.4	0.6	0.2	0.2	0.2	0.1	0.1			0.4	0.4	
	Non-means tested												
	Total	14.1	16.3	16.0	15.3	15.0	14.3	13.3			24.7	24.5	
	Sickness/Health	6.1	6.8	6.5	6.5	6.3	6.1	5.8			8.0	8.0	
	Disability	0.5	0.6	0.5	0.5	0.5	0.5	0.5			1.6	1.5	
	Old age	3.7	4.1	4.8	4.9	5.0	4.8	4.6			10.6	10.5	
	Survivors	0.9	1.0	0.5	0.5	0.5	0.4	0.4			1.5	1.5	
	Family/Children	1.9	2.1	1.9	1.8	1.7	1.6	1.5			1.8	1.8	
	Unemployment	1.0	1.7	1.7	1.2	1.0	0.8	0.6			1.2	1.1	
	Housing	0.0	0.0	0.0	0.0	0.0	0.0						
Social Exclusion n.e.c.	0.0	0.0	0.1	0.1	0.1	0.0	0.0			0.1	0.1		

Source: Eurostat (ESSPROS). Data as at 3 July 2017.

Note: The total figures of social expenditure include all benefits excluding administrative costs.

MAIN SOCIAL INDICATORS

INCOME AND LIVING CONDITIONS

IE	%											EU28		
		2008	2009	2010	2011	2012	2013	2014	2015	2016	Latest year change	Change 2008 to latest year	2014	2015
	At-risk-of-poverty or social exclusion rate	23.7	25.7	27.3	29.4	30.3	29.9	27.7	26.0		-1.7 pp	2.3 pp	24.4	23.7
	At-risk-of-poverty rate	15.5	15.0	15.2	15.2	16.6	15.7	16.4	16.3		-0.1 pp	0.8 pp	17.2	17.3
	Value of threshold (single HH) - in PPS	10901	10386	10102	9999	9962	10039	9939	10622		7.5 %	-6.2 %		
	Value of threshold (2 adults + 2 children younger than 14 years) - in PPS	22893	21810	21214	20998	20921	21082	20872	22307		7.5 %	-6.2 %		
	Severe material deprivation rate	5.5	6.1	5.7	7.8	9.8	9.9	8.4	7.5	7.5	0.0 pp	2.0 pp	8.9	8.1
	Share of people aged 0-59 living in (quasi-) jobless households	13.7	20.0	22.9	24.2	23.4	23.9	21.0	19.2		-1.8 pp	5.5 pp	11.2	10.6
	Persistent at-risk-of-poverty rate				8.8	13.2	9.1	10.7	9.4		-1.3 pp		10.3	10.9
Total population	At risk-of-poverty gap	17.7	16.2	15.5	17.5	20.0	17.5	18.9	18.5		-0.4 pp	0.8 pp	24.5	24.8
	Anchored at-risk-of-poverty rate (ref-2008)	15.5	15.4	20.0	21.7	24.4	24.0	23.4	19.9		-3.5 pp	4.4 pp	19.4	18.5
	Impact of social transfers on poverty reduction (excl. pensions)	54.4	60.0	61.9	61.6	58.0	59.0	55.8	55.0		-0.8 pp	0.6 pp	34.1	33.46
	S80/S20	4.4	4.2	4.7	4.6	4.8	4.7	4.9	4.5		-8.2 %	2.3 %	5.2	5.2
	Overcrowding rate	4.7	3.7	3.4	2.6	3.2	2.8	3.6	3.4		-0.2 pp	-1.3 pp	16.7	16.7
	Housing cost overburden rate	3.3	4.0	4.9	6.1	6.3	4.6	6.2	4.6		-1.6 pp	1.3 pp	11.5	11.3
	Real change in gross household disposable income	4.3	-1.1	-2.0	-3.7	1.5	-2.0	2.2	4.7				1.1	2.2

Note: For the poverty threshold values, levels are shown in PPS but changes are shown as changes in national currency terms and accounting for inflation.

IE	%	2008	2009	2010	2011	2012	2013	2014	2015	2016	Latest year change	Change 2008 to latest year	EU28		
		2008	2009	2010	2011	2012	2013	2014	2015	2016	Latest year change	Change 2008 to latest year	2014	2015	
Children (0-17)	At-risk-of-poverty or social exclusion rate	26.6	31.4	34.1	34.1	33.5	34.4	30.4	28.8		-1.6 pp	2.2 pp	27.7	26.9	
	At-risk-of-poverty rate	18.0	18.8	18.9	17.1	19.3	18.2	18.3	17.9		-0.4 pp	-0.1 pp	21.1	21.1	
	Severe material deprivation rate	6.8	8.4	8.2	10.0	12.4	13.4	10.1	8.9	8.9	0.0 pp	2.1 pp	10.4	9.5	
	Share of people aged 0-17 living in (quasi-) jobless households	15.1	23.4	25.6	26.0	22.8	24.2	21.4	19.8		-1.6 pp	4.7 pp	9.8	9.3	
	At risk-of-poverty gap	19.2	14.7	14.3	14.7	17.8	14.9	16.3	17.7		1.4 pp	-1.5 pp	25.9	26.0	
IE	Impact of social transfers on poverty reduction (excl. pensions)	55.2	59.7	62.9	65.2	58.0	59.5	58.1	57.7		-0.4 pp	2.5 pp	39.2	39.0	
	Overcrowding rate	5.2	5.3	5.4	4.2	4.3	3.9	4.2	5.7		1.5 pp	0.5 pp	22.6	23.0	
IE	%	2008	2009	2010	2011	2012	2013	2014	2015	2016	Latest year change	Change 2008 to latest year	EU28		
		2008	2009	2010	2011	2012	2013	2014	2015	2016	Latest year change	Change 2008 to latest year	2014	2015	
Youth (18-24)	At-risk-of-poverty or social exclusion rate	23.7	26.4	32.1	41.8	44.3	40.3	42.2	36.8		-5.4 pp	13.1 pp	31.9	31.3	
	At-risk-of-poverty rate	13.7	14.7	19.9	26.8	24.7	22.6	28.1	24.5		-3.6 pp	10.8 pp	23.7	23.9	
	Severe material deprivation rate	6.7	6.7	5.5	10.1	14.0	11.9	12.3	11.8	11.8	0.0 pp	5.1 pp	11.0	9.9	
	Share of people aged 18-24 living in (quasi-) jobless households	11.8	18.0	23.4	26.1	28.2	28.5	24.6	21.0		-3.6 pp	9.2 pp	11.8	10.8	
	In-work at-risk-of poverty rate	2.9	5.7	5.6	10.4	10.2	3.2	8.5	5.8		-2.7 pp	2.9 pp	13.0	12.4	
	Youth unemployment ratio (15-24)	7.1	11.7	12.0	12.1	12.3	10.6	8.9	7.6	6.7	6.7	-0.9 pp	-0.4 pp	9.3	8.4
	NEET rate	17.5	23.1	24.1	24.0	23.8	20.5	19.5	18.5	15.9	15.9	-2.6 pp	-1.6 pp	16.5	15.8
Housing cost overburden rate	3.4	6.7	9.3	13.9	10.2	10.1	13.0	5.9			-7.1 pp	2.5 pp	14.6	14.2	

IE	%	EU28										Change 2008 to latest year	Latest year change	EU28		
		2008	2009	2010	2011	2012	2013	2014	2015	2016	2015				2014	2015
Working age (18-64)	At-risk-of-poverty or social exclusion rate	22.6	24.8	27.2	30.5	32.0	31.3	29.5	26.8				-2.7 pp	4.2 pp	25.4	24.7
	At-risk-of-poverty rate	13.4	13.2	14.6	15.1	16.2	15.7	16.7	16.0				-0.7 pp	2.6 pp	17.1	17.1
	Severe material deprivation rate	5.6	5.8	5.4	7.9	10.1	9.6	8.7	7.8	7.8			0.0 pp	2.2 pp	9.2	8.4
	Share of people aged 18-59 living in (quasi-) jobless households	13.1	18.4	21.7	23.4	23.6	23.7	20.8	18.9				-1.9 pp	5.8 pp	11.7	11.1
	At risk-of-poverty gap	20.5	17.3	15.4	18.2	21.4	17.9	19.0	19.7				0.7 pp	-0.8 pp	26.9	27.1
	In-work at-risk-of poverty rate	6.3	4.9	5.5	5.3	5.6	5.0	5.4	4.8				-0.6 pp	-1.5 pp	9.5	9.5
	Impact of social transfers on poverty reduction (excl. pensions)	56.6	61.4	61.8	61.4	59.2	59.6	55.6	54.4				-1.2 pp	-2.2 pp	34.7	34.5
Overcrowding rate	5.2	3.5	3.0	2.3	3.2	2.8	3.9	3.1				-0.8 pp	-2.1 pp	17.8	17.8	
Housing cost overburden rate	3.4	4.2	5.4	6.7	6.7	5.3	6.8	5.0				-1.8 pp	1.6 pp	12.0	11.7	
IE	%	EU28										Change 2008 to latest year	Latest year change	EU28		
Elderly (65+)	At-risk-of-poverty or social exclusion rate	22.5	17.9	11.3	13.8	15.2	13.7	13.9	16.5				2.6 pp	-6.0 pp	17.8	17.4
	At-risk-of-poverty rate	21.1	16.2	9.9	11.0	12.8	10.6	11.4	14.2				2.8 pp	-6.9 pp	13.8	14.1
	Severe material deprivation rate	2.2	2.6	1.5	3.0	2.8	3.6	2.9	3.1	3.1			0.0 pp	0.9 pp	6.3	5.5
	Relative median income of elderly	0.74	0.78	0.85	0.86	0.86	0.91	0.89	0.87				-2.2 %	17.6 %	0.94	0.93
	Aggregate replacement ratio	0.49	0.48	0.47	0.43	0.42	0.37	0.38	0.38				0.0 %	-22.4 %	0.56	0.57
	Overcrowding rate	0.4	0.7	0.6	0.4	0.6	0.2	0.4	0.4				0.0 pp	0.0 pp	6.6	6.5
	Housing cost overburden rate	2.0	1.5	2.9	4.0	3.5	3.1	4.6	2.7				-1.9 pp	0.7 pp	10.6	10.4

Source: Eurostat (EU-SILC, LFS)

INVESTING IN CHILDREN

IE	%	EU28												
		2008	2009	2010	2011	2012	2013	2014	2015	2016	Latest year change	Change 2008 to latest year	2014	2015
Overall objective of combating child poverty and social exclusion and promoting child well-being	At-risk-of-poverty or social exclusion (0-17)	26.6	31.4	34.1	34.1	33.5	34.4	30.4	28.8		-1.6 pp	2.2 pp	27.7	26.9
	At-risk-of-poverty rate (0-17)	18.0	18.8	18.9	17.1	19.3	18.2	18.3	17.9		-0.4 pp	-0.1 pp	21.1	21.1
	Severe Material Deprivation (0-17)	6.8	8.4	8.2	10.0	12.4	13.4	10.1	8.9	8.9	0.0 pp	2.1 pp	10.4	9.5
	Share of people living in (quasi-) jobless households (% of 0-17 population)	15.1	23.4	25.6	26.0	22.8	24.2	21.4	19.8		-1.6 pp	4.7 pp	9.8	9.3
	Persistent at-risk-of-poverty (0-17)				11.4	19.2	10.5	13.5	8.2		-5.3 pp		13.2	13.3
	In-work poverty rate of people living in households with dependent children	8.5	5.3	6.2	4.4	6.4	5.3	5.8	5.8		0.0 pp	-2.7 pp	11.1	11.1
	At-risk-of-poverty rate for children (0-17) living in (quasi-) jobless households	55.5	53.9	46.7	48.0	58.9	51.8	58.5	58.9		0.4 pp	3.4 pp	67.1	69.9
	At-risk-of-poverty rate for children (0-17) living in households at work	11.0	7.5	9.3	6.3	7.3	7.3	7.1	7.7		0.6 pp	-3.3 pp	16.0	16.0
	Childcare 1-29 hours per week (% 0-3 years children)	16.0	15.0	21.0	10.0	21.0	19.0	18.5	21.7		3.2 pp	5.7 pp	14.0	14.7
	Childcare more than 30 hours per week (% 0-3 years children)	8.0	5.0	8.0	11.0	10.0	10.0	8.9	8.9		0.0 pp	0.9 pp	14.4	15.6
Access to adequate resources	Childcare 1-29 hours per week (% 3 years to mandatory school age children)	72.0	74.0	73.0	68.0	74.0	68.0	66.0	73.4		7.4 pp	1.4 pp	33.9	33.9
	Childcare more than 30 hours per week (% 3 years to mandatory school age children)	13.0	13.0	17.0	14.0	15.0	21.0	23.3	18.6		-4.7 pp	5.6 pp	49.2	49.4
	Relative median at-risk-of-poverty gap (0-17)	19.2	14.7	14.3	14.7	17.8	14.9	16.3	17.7		1.4 pp	-1.5 pp	25.9	26.0
	Part time due to care responsibilities (total)	16.5	19.6	16.3	14.8	14.8	16.1	17.4	18.8	19.2	0.4 pp	2.7 pp	21.7	21.7
	Part time due to care responsibilities (male)		2.1	1.4	1.6	1.2		2.4	3.3	3.5	0.2 pp		4.2	4.4
	Part time due to care responsibilities (female)	20.5	24.9	21.5	19.8	20.3	22.4	23.9	25.2	25.8	0.6 pp	5.3 pp	27.1	27.2
	Impact of social transfers (excl. pensions) in reducing child poverty	55.2	59.7	62.9	65.2	58.0	59.5	58.1	57.7		-0.4 pp	2.5 pp	39.2	39.0
	Housing cost overburden rate (0-17)	3.6	4.4	4.6	5.7	6.7	3.9	5.5	4.7		-0.8 pp	1.1 pp	10.8	10.7
	NEET rate (15-19)	11.0	11.5	11.5	10.5	11.3	10.5	10.3	9.9	9.8	-0.1 pp	-1.2 pp	6.5	6.3
	Early leavers from education and training (18-24)	11.4	11.7	11.5	10.8	9.7	8.4	6.9	6.9	6.3	-0.6 pp	-5.1 pp	11.2	11.0
Access to quality services	Self reported unmet need for medical care (16-24)	1.3	1.0	1.0	1.9	2.2	1.6	1.9	1.2		-0.7 pp	-0.1 pp	1.5	1.3
	Infant mortality rate	3.4	3.3	3.6	3.5	3.5	3.5	3.3	3.4		0.1 pp	0.0 pp	3.7	3.6
	Severe housing deprivation (0-17)	1.2	1.9	0.7	1.1	0.6	1.8	1.8	2.0		0.2 pp	0.8 pp	7.4	7.4
	Overcrowding rate (0-17)	5.2	5.3	5.4	4.2	4.3	3.9	4.2	5.7		1.5 pp	0.5 pp	22.6	23.0

Source: Eurostat (EU-SILC, LFS); CSO for infant mortality data

LONG-TERM ADEQUACY OF PENSIONS: THEORETICAL REPLACEMENT RATES (2013-2053)

TRR case		Net				Gross			
		2013		2053		2013		2053	
		Men	Women	Men	Women	Men	Women	Men	Women
Average Earnings	Base case I: 40 years up to age 65	83.1		38.4		72.9		29.9	
	Base case II: 40 years up to the SPA	83.1		68.7		72.9		62.7	
	Increased SPA: from age 25 to SPA	83.1		71.4		72.9		65.8	
	AWG career length case	82.6		44.6	43.4	72.9		34.8	33.9
	Longer career I: from age 25 to 67			43.4				33.9	
	Shorter career I: from age 25 to 63			34.0				26.4	
	Longer career I: from age 25 to SPA+2			76.3				70.9	
	Shorter career I: from age 25 to SPA-2			40.8				31.8	
	Career break – unemployment: 1 year			70.4				64.8	
	Career break – unemployment: 2 years			69.4				63.7	
	Career break – unemployment: 3 years			68.7				62.7	
	Career break due to child care: 0 year			71.4				65.8	
	Career break due to child care: 1 year			70.4				64.8	
	Career break due to child care: 2 years			69.4				63.7	
	Career break due to child care: 3 years			68.7				62.7	
	Short career (30 year career)			65.4				58.0	
	Early retirement due to unemployment			68.7				62.6	
	Early retirement due to disability			68.7				62.6	
Indexation: 10 years after retirement			68.3				60.8		
Low Earnings (66%)	Base case I: 40 years up to age 65	100.6		34.3		91.5		29.9	
	Base case II: 40 years up to the SPA	100.6		82.2		91.5		78.0	
	Increased SPA: from age 25 to SPA	100.6		84.2		91.5		81.2	
	AWG career length case	100.0		40.0	38.9	91.5		34.8	33.9
	Longer career I: from age 25 to 67			38.9				33.9	
	Shorter career I: from age 25 to 63			30.4				26.4	
	Longer career I: from age 25 to SPA+2			87.4				86.3	
	Shorter career I: from age 25 to SPA-2			36.6				31.8	
	Career break – unemployment: 1 year			83.5				80.2	
	Career break – unemployment: 2 years			82.9				79.1	
	Career break – unemployment: 3 years			78.1				78.1	
	Career break due to child care: 0 year			84.2				81.2	
	Career break due to child care: 1 year			83.6				80.2	
	Career break due to child care: 2 years			82.9				79.1	
	Career break due to child care: 3 years			82.3				78.1	
	Short career (30 year career)	n.a.	n.a.	79.3		n.a.	n.a.	73.4	
	Early retirement due to unemployment			82.2				78.0	
	Early retirement due to disability			82.2				78.0	
Pension rights of surviving spouses			84.2				81.2		
High	Base case I: 40 years up to age 65	62.5		41.5		45.5		20.0	
	Base case II: 40 years up to the SPA	62.5		65.0		45.5		38.5	

Source: Joint SPC/EC 2015 report on Pension Adequacy in the European Union (2013-2053)

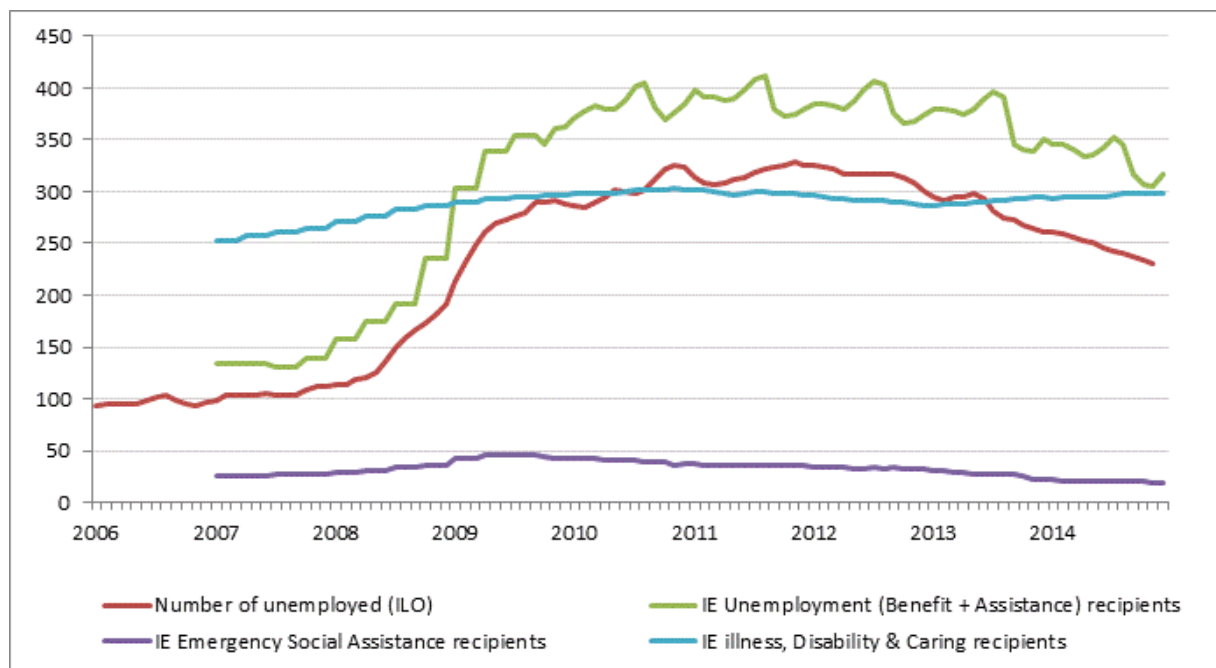
HEALTH CARE SYSTEMS

IE									EU28	
	2008	2009	2010	2011	2012	2013	2014	2015	2014	2015
Healthy life years at birth (years) - male	63.5	63.9	65.9	66.1	65.9	65.8	66.3	66.6	61.4	62.6
Healthy life years at birth (years) - female	65.1	65.2	66.9	68.3	68.5	68.0	67.5	67.9	61.8	63.3
Healthy life years at 65 (years) - male	9.3	10.2	10.9	10.9	10.9	10.9	11.4	11.4	8.6	9.4
Healthy life years at 65 (years) - female	10.3	10.5	11.1	11.8	12.2	12.1	12.3	12.0	8.6	9.4
Life expectancy at birth (years) - male	77.9	77.7	78.5	78.6	78.7	79.0	79.3	79.6	78.1	77.9
Life expectancy at birth (years) - female	82.4	82.7	83.1	83.0	83.2	83.1	83.5	83.4	83.6	83.3
Life expectancy at 65 (years) - male	16.8	17.4	17.7	17.9	18.0	18.1	18.4	18.4	18.2	17.9
Life expectancy at 65 (years) - female	20.3	20.8	20.8	20.9	21.1	20.8	21.1	21.0	21.6	21.2
Self reported unmet need for medical examination or treatment	1.8	2.0	2.1	2.2	3.4	3.3	3.7	2.8	3.6	3.2
Self-perceived health (%)	84.3	83.1	82.8	83.1	82.7	82.0	82.5	82.3	67.4	66.9
Total health care expenditure per capita (PPS)						3314.0	3330.7	3488.9		
Total health care expenditure (% of GDP)						10.4	9.9	7.8		

Source: Eurostat (EU-SILC, Mortality data, SHA)

Note: i) Self-perceived health refers to the percentage of the population reporting either good or very good health; ii) Total health care expenditure figures are based on SHA 2011 for 2013 onwards.

TRENDS IN TAKE-UP OF SELECTED BENEFITS⁹



⁹ These data have been collected by the SPC in the context of monitoring the social impact of the crisis. It includes only a selection of benefits which have been considered most reactive to the crisis. The number of unemployed (standard definition by the ILO) are given as a background.

IE	Unemployment
definition	Unemployment according to ILO definition - Total
unit	Thousands of persons - seasonally adjusted
source	Eurostat
	Unemployment benefit
definition	Unemployment Benefit and Assistance recipients
unit	thousands of recipients
source	Social Welfare Monthly Statistical Reports
	Social assistance benefit
definition	Emergency Social Assistance recipients
unit	thousands of beneficiaries
source	Social Welfare Monthly Statistical Reports
	Disability benefit
definition	Illness, Disability & Caring recipients
unit	thousands of beneficiaries
source	Social Welfare Monthly Statistical Reports

SUMMARY TABLE OF MAIN SOCIAL TRENDS

Group	Indicator	IE										EU27			
		2008	2009	2010	2011	2012	2013	2014	2015	2016	change 2014-2015 (2015-2016 for SMD & LFS-based figures)	change 2008 to latest year	2015	latest year change	
Europe 2020	At risk of poverty or social exclusion (in %)	23.7	25.7	27.3	29.4	30.3	29.9	27.7	26.0	n.a.	-1.7 pp	2.3 pp	23.7	-0.7 pp	0.0 pp
	At-risk-of-poverty rate (in %)	15.5	15.0	15.2	15.2	16.6	15.7	16.4	16.3	n.a.	-0.1 pp	0.8 pp	17.3	0.1 pp	0.8 pp
	At-risk-of-poverty threshold for a single person household (levels in pps, changes as real change in national currency in %)	10901	10386	10102	9999	9962	10039	9939	10622	n.a.	7.5 %	-6.2 %	n.a.	n.a.	n.a.
	Severe material deprivation rate (in %)	5.5	6.1	5.7	7.8	9.8	9.9	8.4	7.5	7.5	0.0 pp	2.0 pp	8.0	-0.3 pp	-0.9 pp
Intensity of poverty risk	Population living in (quasi-) jobless households (in %)	13.7	20.0	22.9	24.2	23.4	23.9	21.0	19.2	n.a.	-1.8 pp	5.5 pp	10.6	-0.6 pp	1.4 pp
	Relative median at-risk-of-poverty gap (in %)	17.7	16.2	15.5	17.5	20.0	17.5	18.9	18.5	n.a.	-0.4 pp	0.8 pp	24.8	0.3 pp	2.9 pp
Persistence of poverty risk	Persistent at-risk-of-poverty rate (in %)	n.a.	n.a.	n.a.	8.8	13.2	9.1	10.7	9.4	n.a.	-1.3 pp	n.a.	10.9	0.6 pp	2.2 pp
	Income quintile ratio (S80/S20)	4.4	4.2	4.7	4.6	4.8	4.7	4.9	4.5	n.a.	-8.2 %	2.3 %	5.2	0.0 %	4.0 %
Income inequalities	At-risk-of poverty or social exclusion rate of children (% of people aged 0-17)	26.6	31.4	34.1	34.1	33.5	34.4	30.4	28.8	n.a.	-1.6 pp	2.2 pp	26.9	-0.8 pp	0.5 pp
	Impact of social transfers (excl. pensions) on poverty reduction (%)	54.4	60.0	61.9	61.6	58.0	59.0	55.8	55.0	n.a.	-0.8 pp	0.6 pp	33.5	-0.6 pp	-1.3 pp
	Impact of social transfers (incl. pensions) on poverty reduction (%)	62.9	67.5	69.7	69.9	67.0	68.1	66.0	64.8	n.a.	-1.2 pp	1.9 pp	61.2	-0.3 pp	0.5 pp
	At-risk-of-poverty rate for the population living in (quasi-) jobless households	46.6	46.0	43.1	43.3	50.0	47.1	52.4	54.1	n.a.	1.7 pp	7.5 pp	58.9	0.9 pp	3.2 pp
Social consequences of labour market	In-work at-risk-of poverty rate (in %)	6.3	4.9	5.5	5.3	5.6	5.0	5.4	4.8	n.a.	-0.6 pp	-1.5 pp	9.5	-0.1 pp	1.0 pp
	Long-term unemployment rate (in %)	1.7	3.5	6.8	8.6	9.0	7.8	6.6	5.3	4.2	-1.1 pp	2.5 pp	4.5	-0.6 pp	1.3 pp
Youth exclusion	Early school leavers (in %)	11.4	11.7	11.5	10.8	9.7	8.4	6.9	6.3	6.3	-0.6 pp	-5.1 pp	11.0	-0.2 pp	-4.0 pp
	Youth unemployment ratio (15-24)	7.1	11.7	12.0	12.1	12.3	10.6	8.9	7.6	6.7	-0.9 pp	-0.4 pp	8.4	-0.7 pp	0.8 pp
	NEETs (15-24)	15.0	18.6	19.2	18.8	18.7	16.1	15.2	14.3	13.0	-1.3 pp	-2.0 pp	12.0	-0.5 pp	0.6 pp
Active ageing	Employment rate of older workers (55-64) in %	53.9	51.3	50.2	50.0	49.3	51.3	53.0	55.6	57.2	1.6 pp	3.3 pp	53.4	2.0 pp	9.9 pp
	At risk of poverty or social exclusion for the elderly (65+) in %	22.5	17.9	11.3	13.8	15.2	13.7	13.9	16.5	n.a.	2.6 pp	-6.0 pp	17.3	-0.4 pp	-6.0 pp
Pension adequacy	Median relative income of elderly people	0.74	0.78	0.85	0.86	0.86	0.91	0.89	0.87	n.a.	-2.2 %	17.6 %	0.93	-1.1 %	9.4 %
	Aggregate replacement ratio	0.49	0.48	0.47	0.43	0.42	0.37	0.38	0.38	n.a.	0.0 %	-22.4 %	0.57	1.8 %	16.3 %
	Self reported unmet need for medical care	1.8	2.0	2.1	2.2	3.4	3.3	3.7	2.8	n.a.	-0.9 pp	1.0 pp	3.2	-0.4 pp	0.1 pp
Health	Healthy life years at 65 - males	9.3	10.2	10.9	10.9	10.9	10.9	11.4	11.4	n.a.	0.0 %	22.6 %	n.a.	n.a.	n.a.
	Healthy life years at 65 - females	10.3	10.5	11.1	11.8	12.2	12.1	12.3	12.0	n.a.	-2.4 %	16.5 %	n.a.	n.a.	n.a.
Access to decent housing	Housing cost overburden rate	3.3	4.0	4.9	6.1	6.3	4.6	6.2	4.6	n.a.	-1.6 pp	1.3 pp	11.3	-0.3 pp	0.8 pp
	Real change in gross household disposable income (in %)	4.3	-1.0	-2.0	-3.7	1.5	-2.0	2.2	4.7	n.a.	4.7 %	-0.6 %	n.a.	n.a.	n.a.

Note: For the poverty threshold values, levels are shown in PPS but changes are shown as changes in national currency terms and accounting for inflation. For consistency with the main SPPM dashboard latest changes refer to 2014-2015 for EU-SILC based indicators (except SMD) and 2015-2016 for SMD and LFS-based indicators, while changes since 2008 refer to 2008-2015 and 2008-2016 respectively.

KEY SOCIAL CHALLENGES AND GOOD SOCIAL OUTCOMES, IRELAND

2017

Social policy area	Key social challenge	Good social outcome
1. Preventing poverty and social exclusion through inclusive labour markets, adequate and sustainable social protection and high quality services	<p>The number of men and women aged 0-59 living in jobless households is worse than the EU average¹⁰ but shows a significantly positive development.</p> <p><i>There is a higher than average risk of poverty or social exclusion for persons with disabilities¹¹ and there is a higher than EU average gap between the risk of poverty or social exclusion for persons with and without disabilities¹².</i></p>	The impact of social transfers (other than pensions) in reducing poverty is significantly better than the EU average.
2. Breaking the intergenerational transmission of poverty – tackling child poverty	<p>The share of children living in jobless households is worse than the EU average but shows a significantly positive development.</p>	<p>Impact of social transfers (including pensions) in reducing child poverty is significantly better than the EU average.</p> <p>The at-risk-of poverty rate of children living in household at work is significantly better than the EU average.</p>
3. Active inclusion – tackling poverty in working age		In-work poverty is significantly lower than the EU average, especially for women.
4. Elderly poverty/adequate income and living conditions of the elderly	<p>The share of people aged +65 at risk of poverty or social exclusion is around the EU average but shows some negative development.</p> <p>Aggregate replacement ratio (excl. other social benefits) is significantly below the EU average.</p>	Poverty gap (65+) is below the EU average and is decreasing.
5. Health & LTC	<p>Unmet need for medical care is around the EU average but shows some negative development, mainly due to the subcomponent cost.</p> <p><i>There is room to improve the cost-effectiveness of the health system¹³.</i></p>	
6. Other key issues		

Note: The assessment of the key social challenges and good social outcomes within EU Member States is based on a full analysis of all the indicators in the social policy area of the Joint Assessment Framework tool, not only those included in the tables in this Country Profile.

¹⁰ To be noted that work continues to explore and explain the disparity between Statistics on Income and Living Conditions (SILC) measurement of very low work intensity households and Labour Force Survey (LFS) data on jobless households. It should be acknowledged that while the rate of jobless households in Ireland is falling the issue remains a concern.

¹¹ Disability measured through a concept of long-standing limitation in performing usual activities: “*Limitation in activities people usually do because of health problems for at least the past six months*” (EU-SILC). Level of activity limitation considered: “*some or severe*”.

¹² Source: Eurostat 2015.

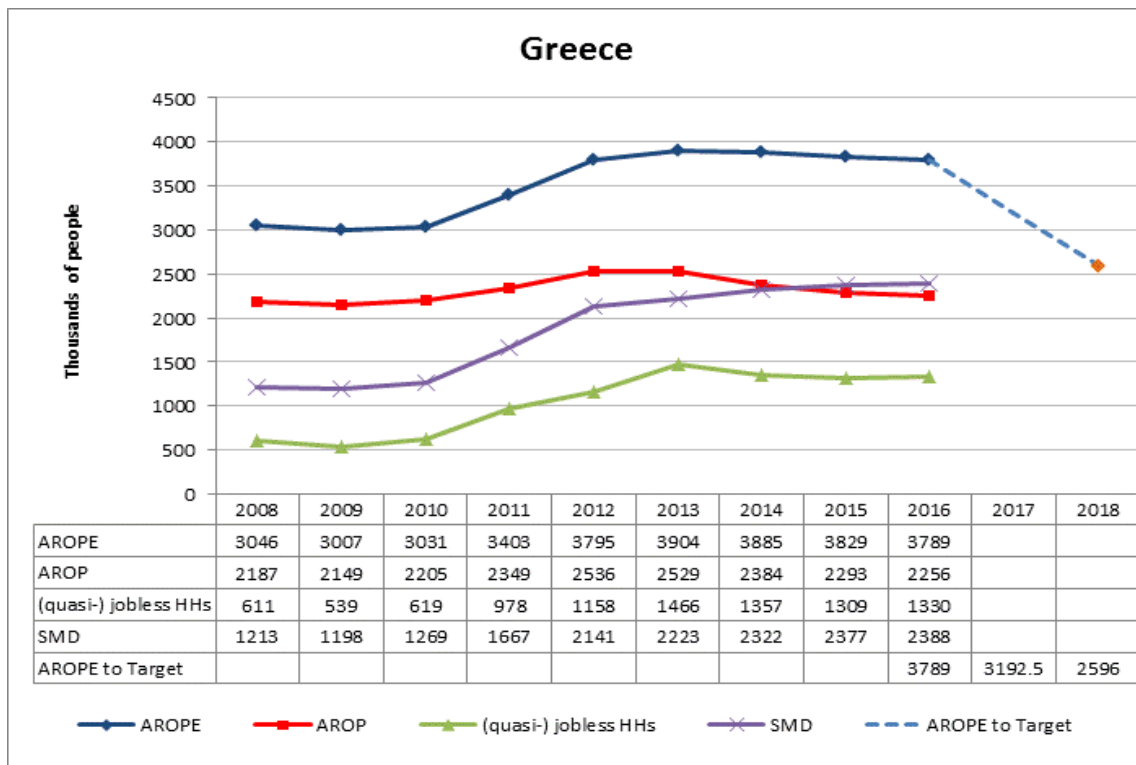
¹³ Source: Country Report 2016 and 2017.

NATIONAL 2020 TARGET FOR THE REDUCTION OF POVERTY AND SOCIAL EXCLUSION

Reduce the number of people at risk of poverty or social exclusion by 450,000 by 2020, compared to the figure in 2008.

Source: National Reform Programme (2016)

PROGRESS TOWARDS THE 2020 NATIONAL TARGET FOR THE REDUCTION OF POVERTY AND SOCIAL EXCLUSION

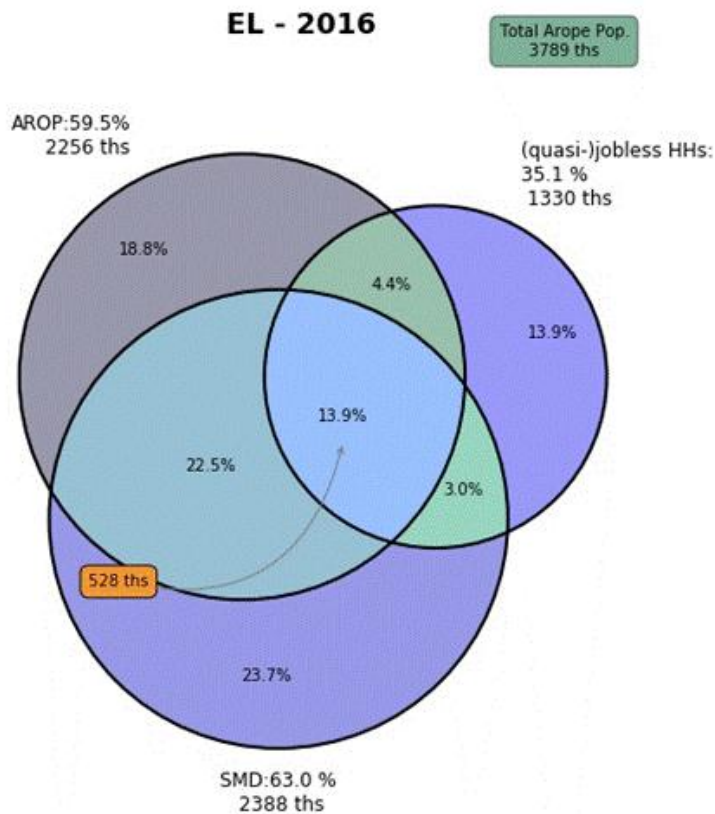


Source: Eurostat (EU-SILC)

Note: i) Progress on the target is monitored on the basis of the EU SILC data with a base year 2008 and target data year 2018; ii) AROPE - at-risk-of-poverty or social exclusion rate; AROP - at-risk-of-poverty rate; (quasi-)jobless HHs - share of population living in (quasi-)jobless households, i.e. very low work intensity (VLWI) households; SMD - severe material deprivation rate; iii) For the at-risk-of-poverty rate (AROP), the income reference year is the calendar year prior to the survey year except for the United Kingdom (survey year) and Ireland (12 months preceding the survey). Similarly, the share of (quasi-) jobless households or the very low work intensity rate (VLWI) refers to the reference year prior to the survey while for the severe material deprivation rate (SMD), the reference is the current year.

¹⁴ Figures in this profile for data obtained from the Eurostat website are based on data extracted around 3 July 2017, unless otherwise stated.

COMPOSITION OF THE POPULATION AT RISK OF POVERTY OR SOCIAL EXCLUSION (2016)



Source: Eurostat (EU-SILC)

EL													EU28	
		2008	2009	2010	2011	2012	2013	2014	2015	2016	Latest year change	Change 2008 to latest year	2014	2015
AROP	% of total AROPE	71.8	71.5	72.8	69.0	66.8	64.8	61.4	59.9	59.5	-0.3 pp	-12.3 pp	70.5	72.9
	1000 persons	2187	2149	2205	2349	2536	2529	2384	2293	2256	-1.6 %	3.2 %	85926	86592
(quasi-) jobless HHs	% of total AROPE	20.1	17.9	20.4	28.7	30.5	37.6	34.9	34.2	35.1	0.9 pp	15.0 pp	34.4	33.4
	1000 persons	611	539	619	978	1158	1466	1357	1309	1330	1.6 %	117.7 %	41945	39624
SMD	% of total AROPE	39.8	39.8	41.9	49.0	56.4	56.9	59.8	62.1	63.0	0.9 pp	23.2 pp	36.5	33.9
	1000 persons	1213	1198	1269	1667	2141	2223	2322	2377	2388	0.5 %	96.9 %	44441	40320
AROP and (quasi-) jobless HHs but not SMD	% of total AROPE	4.0	3.6	4.4	6.6	6.9	7.5	5.6	4.7	4.4	-0.4 pp	0.4 pp	11.9	12.0
	1000 persons	122	107	134	226	260	291	216	181	165	-8.8 %	35.2 %	14534	14211
SMD and AROP but not (quasi-) jobless HHs	% of total AROPE	18.5	19.2	22.1	20.4	23.7	20.2	23.2	22.5	22.5	-0.1 pp	3.9 pp	10.5	10.3
	1000 persons	564	576	669	693	900	789	901	863	851	-1.4 %	50.9 %	12785	12189
AROP and SMD and (quasi-) jobless HHs	% of total AROPE	4.1	2.8	3.6	8.9	10.4	14.5	12.3	12.9	13.9	1.0 pp	9.9 pp	8.1	7.7
	1000 persons	124	85	108	303	396	565	479	495	528	6.7 %	325.8 %	9827	9181
SMD and (quasi-) jobless HHs but not AROP	% of total AROPE	1.0	0.9	1.4	2.0	2.3	2.7	2.7	3.1	3.0	-0.1 pp	1.9 pp	2.8	2.5
	1000 persons	31	26	43	67	86	104	104	117	112	-4.3 %	261.3 %	3430	2952

Source: Eurostat (EU-SILC)

MACRO-ECONOMIC AND LABOUR MARKET CONTEXT

EL											EU28	
	2008	2009	2010	2011	2012	2013	2014	2015	2016	2015	2016	
Real GDP growth (y-o-y % change)	-0.3	-4.3	-5.5	-9.1	-7.3	-3.2	0.4	-0.2	0.0	2.2	1.9	
Employment growth (y-o-y % change)	1.3	-0.6	-2.6	-6.9	-6.3	-2.6	0.0	0.5	1.3	1.1	1.2	
Unemployment rate (% of labour force)	7.8	9.6	12.7	17.9	24.5	27.5	26.5	24.9	23.6	9.4	8.5	
Long-term unemployment rate (% of labour force)	3.7	3.9	5.7	8.8	14.5	18.5	19.5	18.2	17.0	4.5	4.0	
Social Protection expenditure (% of GDP)	22.4	24.6	25.7	27.2	27.6	26.0	25.5					

Source: Eurostat (National Accounts, LFS, ESSPROS). Data as at 3 July 2017.

SOCIAL PROTECTION EXPENDITURE

EL											EU28	
	2008	2009	2010	2011	2012	2013	2014	2015	2013	2014		
Social protection expenditure (in % of GDP)	Total	22.4	24.6	25.7	27.2	27.6	26.0	25.5		27.8	27.6	
	Sickness/Health	6.3	6.9	7.1	6.5	6.1	5.7	5.0		8.0	8.1	
	Disability	1.4	1.5	1.6	1.7	1.8	1.6	1.7		2.0	2.0	
	Old age	10.5	11.4	11.9	13.5	14.7	13.7	14.0		11.1	11.1	
	Survivors	2.1	2.3	2.4	2.5	2.6	2.5	2.6		1.6	1.6	
	Family/Children	0.9	1.0	1.0	1.1	1.0	1.1	1.1		2.3	2.4	
	Unemployment	1.2	1.4	1.6	1.7	1.4	1.3	1.1		1.5	1.4	
	Housing	0.1	0.1	0.1	0.0	0.0	0.0	0.0		0.6	0.6	
	Social Exclusion n.e.c.	0.0	0.0	0.1	0.1	0.1	0.1	0.1		0.5	0.5	
	Means-tested											
	Total	0.8	0.8	0.9	0.9	0.9	1.2	1.2		3.1	3.1	
	Sickness/Health	0.0	0.0	0.0	0.0	0.0	0.0	0.0		0.1	0.1	
	Disability	0.1	0.1	0.1	0.1	0.1	0.1	0.1		0.5	0.5	
	Old age	0.3	0.3	0.3	0.4	0.4	0.3	0.3		0.6	0.5	
	Survivors	0.2	0.2	0.2	0.2	0.2	0.2	0.2		0.1	0.1	
	Family/Children	0.1	0.1	0.1	0.1	0.1	0.5	0.6		0.5	0.6	
	Unemployment	0.0	0.0	0.0	0.0	0.0	0.0	0.0		0.3	0.3	
	Housing	0.1	0.1	0.1	0.0	0.0	0.0	0.0		0.6	0.6	
	Social Exclusion n.e.c.	0.0	0.0	0.1	0.1	0.1	0.1	0.1		0.4	0.4	
	Non-means tested											
	Total	21.6	23.8	24.8	26.3	26.7	24.8	24.3		24.7	24.5	
	Sickness/Health	6.3	6.9	7.0	6.5	6.1	5.7	5.0		8.0	8.0	
	Disability	1.3	1.4	1.5	1.7	1.7	1.6	1.6		1.6	1.5	
	Old age	10.1	11.0	11.6	13.1	14.3	13.4	13.7		10.6	10.5	
	Survivors	1.9	2.1	2.2	2.3	2.4	2.3	2.4		1.5	1.5	
	Family/Children	0.8	0.9	0.9	0.9	0.9	0.6	0.5		1.8	1.8	
	Unemployment	1.2	1.4	1.6	1.7	1.4	1.3	1.1		1.2	1.1	
	Housing	0.0	0.0	0.0	0.0	0.0						
	Social Exclusion n.e.c.	0.0	0.0	0.0	0.0	0.0	0.0	0.0		0.1	0.1	

Source: Eurostat (ESSPROS). Data as at 3 July 2017.

Note: The total figures of social expenditure include all benefits excluding administrative costs.

MAIN SOCIAL INDICATORS

INCOME AND LIVING CONDITIONS

EL	%	EU28										Change 2008 to latest year	Latest year change	2016	2015	2014	2015	2014	2015	
		2008	2009	2010	2011	2012	2013	2014	2015	2016	2014									2015
	At-risk-of-poverty or social exclusion rate	28.1	27.6	27.7	31.0	34.6	35.7	36.0	35.7	36.0	35.7	7.6 pp	-0.3 pp		35.7	36.0	35.7	24.4	23.7	23.7
	At-risk-of-poverty rate	20.1	19.7	20.1	21.4	23.1	23.1	22.1	21.4	21.4	21.4	1.3 pp	-0.7 pp		21.4	22.1	21.4	17.2	17.3	17.3
	Value of threshold (single HH) - in PPS	7219	7521	7559	6976	6038	5427	5166	5281	5396	5396	-1.0 %	-1.0 %		5281	5166	5281			
	Value of threshold (2 adults + 2 children younger than 14 years) - in PPS	15160	15794	15874	14650	12679	11397	10849	11091	11331	11331	-1.0 %	-1.0 %		11091	10849	11091			
	Severe material deprivation rate	11.2	11.0	11.6	15.2	19.5	20.3	21.5	22.2	22.2	22.2	11.0 pp	0.0 pp		22.2	21.5	22.2	8.9	8.1	8.1
	Share of people aged 0-59 living in (quasi-) jobless households	7.5	6.6	7.6	12.0	14.2	18.2	17.2	16.8	17.2	17.2	9.7 pp	0.4 pp		16.8	17.2	16.8	11.2	10.6	10.6
Total	Persistent at-risk-of-poverty rate	13.0	16.1	17.6	10.5	13.8	12.4	14.5	13.3	13.3	13.3	0.3 pp	-1.2 pp		13.3	14.5	13.3	10.3	10.9	10.9
population	At risk-of-poverty gap	24.7	24.1	23.4	26.1	29.9	32.7	31.3	30.6	31.9	31.9	7.2 pp	1.3 pp		30.6	31.3	30.6	24.5	24.8	24.8
	Anchored at-risk-of-poverty rate (ref-2008)	20.1	18.9	18.0	24.9	35.8	44.3	48.0	48.0	48.0	48.0	27.9 pp	0.0 pp		48.0	48.0	48.0	19.4	18.5	18.5
	Impact of social transfers on poverty reduction (excl. pensions)	13.7	13.2	15.6	13.7	13.8	17.5	15.0	16.1	16.1	16.1	2.4 pp	1.1 pp		16.1	15.0	16.1	34.1	33.46	33.46
	S80/S20	5.9	5.8	5.6	6.0	6.6	6.6	6.5	6.5	6.6	6.6	11.9 %	1.5 %		6.6	6.5	6.6	5.2	5.2	5.2
	Overcrowding rate	26.7	25.0	25.5	25.9	26.5	27.3	27.4	28.1	28.1	28.1	2.0 pp	0.6 pp		28.1	27.4	28.1	16.7	16.7	16.7
	Housing cost overburden rate	22.2	21.8	18.1	24.2	33.1	36.9	40.7	40.9	40.5	40.5	18.3 pp	-0.4 pp		40.9	40.7	40.9	11.5	11.3	11.3
	Real change in gross household disposable income	1.1	0.9	-11.1	-10.6	-8.9	-6.6	0.8	-3.0	-3.0	-3.0				-3.0	0.8	-3.0	1.1	2.2	2.2

Note: For the poverty threshold values, levels are shown in PPS but changes are shown as changes in national currency terms and accounting for inflation.

EL	%	EU28												
		2008	2009	2010	2011	2012	2013	2014	2015	2016	Latest year change	Change 2008 to latest year		
Children (0-17)	At-risk-of-poverty or social exclusion rate	28.7	30.0	28.7	30.4	35.4	38.1	36.7	37.8		1.1 pp	9.1 pp	27.7	26.9
	At-risk-of-poverty rate	23.0	23.7	23.0	23.7	26.9	28.8	25.5	26.6		1.1 pp	3.6 pp	21.1	21.1
	Severe material deprivation rate	10.4	12.2	12.2	16.4	20.9	23.3	23.8	25.7	25.7	0.0 pp	15.3 pp	10.4	9.5
	Share of people aged 0-17 living in (quasi-) jobless households	3.9	2.7	3.9	7.2	7.6	13.8	10.2	10.6	10.9	0.3 pp	7.0 pp	9.8	9.3
	At risk-of-poverty gap	26.0	26.4	26.0	27.4	36.0	39.0	34.4	34.5	33.3	-1.2 pp	7.3 pp	25.9	26.0
Youth (18-24)	Impact of social transfers on poverty reduction (excl. pensions)	10.9	6.0	10.9	10.6	9.7	18.2	17.7	18.4		0.7 pp	7.6 pp	39.2	39.0
	Overcrowding rate	30.6	27.9	29.0	28.9	27.3	32.9	32.7	34.6	36.8	2.2 pp	6.2 pp	22.6	23.0
EL	%	EU28												
Youth (18-24)	At-risk-of-poverty or social exclusion rate	34.0	31.6	38.4	40.3	48.3	50.7	53.3	50.9		-2.4 pp	16.9 pp	31.9	31.3
	At-risk-of-poverty rate	23.0	22.3	27.6	26.9	33.1	34.1	33.3	29.9		-3.4 pp	6.9 pp	23.7	23.9
	Severe material deprivation rate	13.8	14.8	18.0	22.5	29.0	29.4	32.5	32.1	32.1	0.0 pp	18.3 pp	11.0	9.9
	Share of people aged 18-24 living in (quasi-) jobless households	8.3	6.6	11.2	14.0	19.3	21.6	24.1	22.0	21.9	-0.1 pp	13.6 pp	11.8	10.8
	In-work at-risk-of poverty rate	15.5	11.6	11.9	12.9	13.3	18.1	20.2	19.2	19.0	-0.2 pp	3.5 pp	13.0	12.4
	Youth unemployment ratio (15-24)	6.6	7.9	9.9	13.0	16.1	16.5	14.7	12.9	11.7	-1.2 pp	5.1 pp	9.3	8.4
	NEET rate	15.6	16.9	20.3	24.2	28.1	28.2	26.5	23.7	21.9	-1.8 pp	6.3 pp	16.5	15.8
Housing cost overburden rate	30.5	32.8	33.1	35.2	48.2	49.3	48.8	46.5	46.9	0.4 pp	16.4 pp	14.6	14.2	

EL	%	EU28										Change 2008 to latest year	EU28		
		2008	2009	2010	2011	2012	2013	2014	2015	2016	Latest year change		2014	2015	
Working age (18-64)	At-risk-of-poverty or social exclusion rate	27.9	27.1	27.7	31.6	37.7	39.1	40.1	39.4			-0.7 pp	11.5 pp	25.4	24.7
	At-risk-of-poverty rate	18.7	18.1	19.0	20.0	23.8	24.1	23.5	22.5			-1.0 pp	3.8 pp	17.1	17.1
	Severe material deprivation rate	10.4	10.3	11.2	15.4	20.7	21.6	22.9	23.5	23.5		0.0 pp	13.1 pp	9.2	8.4
	Share of people aged 18-59 living in (quasi-) jobless households	8.6	7.8	8.7	13.5	16.3	19.6	19.4	18.7			0.5 pp	10.6 pp	11.7	11.1
	At risk-of-poverty gap	25.9	26.1	24.8	28.8	32.5	33.6	34.2	33.5			1.1 pp	8.7 pp	26.9	27.1
	In-work at-risk-of poverty rate	14.2	13.7	13.9	11.9	15.1	13.0	13.2	13.4			0.6 pp	-0.2 pp	9.5	9.5
	Impact of social transfers on poverty reduction (excl. pensions)	13.8	13.0	14.4	13.0	14.4	16.3	14.5	14.8			0.2 pp	0.9 pp	34.7	34.5
	Overcrowding rate	29.2	27.8	28.4	28.8	30.2	29.9	30.2	31.0			0.5 pp	2.3 pp	17.8	17.8
Housing cost overburden rate	22.9	22.4	18.6	23.5	34.4	38.1	41.5	41.4			1.3 pp	19.8 pp	12.0	11.7	
EL	%	EU28										Change 2008 to latest year	EU28		
		2008	2009	2010	2011	2012	2013	2014	2015	2016	Latest year change		2014	2015	
Elderly (65+)	At-risk-of-poverty or social exclusion rate	28.1	26.8	26.7	29.3	23.5	23.1	23.0	22.8			-0.2 pp	-5.3 pp	17.8	17.4
	At-risk-of-poverty rate	22.3	21.4	21.3	23.6	17.2	15.1	14.9	13.7			-1.2 pp	-8.6 pp	13.8	14.1
	Severe material deprivation rate	14.8	12.1	12.4	13.1	14.3	13.7	15.5	15.2			0.0 pp	0.4 pp	6.3	5.5
	Relative median income of elderly	0.86	0.86	0.84	0.81	1.01	1.04	1.00	1.04			2.9 %	24.4 %	0.94	0.93
	Aggregate replacement ratio	0.41	0.41	0.42	0.45	0.52	0.60	0.60	0.61			3.3 %	53.7 %	0.56	0.57
	Overcrowding rate	14.2	12.8	12.5	13.2	14.1	14.4	14.1	14.2			-0.6 pp	-0.6 pp	6.6	6.5
	Housing cost overburden rate	15.1	15.2	14.3	23.4	24.1	26.7	33.2	32.1			-6.1 pp	10.9 pp	10.6	10.4

Source: Eurostat (EU-SILC, LFS)

INVESTING IN CHILDREN

EL	%	EU28												
		2008	2009	2010	2011	2012	2013	2014	2015	2016	Latest year change	Change 2008 to latest year	2014	2015
Overall objective of combating child poverty and social exclusion and promoting child well-being	At-risk-of-poverty or social exclusion (0-17)	28.7	30.0	28.7	30.4	35.4	38.1	36.7	37.8		1.1 pp	9.1 pp	27.7	26.9
	At-risk-of-poverty rate (0-17)	23.0	23.7	23.0	23.7	26.9	28.8	25.5	26.6		1.1 pp	3.6 pp	21.1	21.1
	Severe Material Deprivation (0-17)	10.4	12.2	12.2	16.4	20.9	23.3	23.8	25.7	25.7	0.0 pp	15.3 pp	10.4	9.5
	Share of people living in (quasi-) jobless households (% of 0-17 population)	3.9	2.7	3.9	7.2	7.6	13.8	10.2	10.6	10.9	0.3 pp	7.0 pp	9.8	9.3
	Persistent at-risk-of-poverty (0-17)	14.2	19.8	21.4	11.7	16.9	17.2	20.1	17.3		-2.8 pp	3.1 pp	13.2	13.3
	in-work poverty rate of people living in households with dependent children	16.9	17.0	17.2	14.4	18.5	15.6	15.8	15.7	15.4	-0.3 pp	-1.5 pp	11.1	11.1
	At-risk-of-poverty rate for children (0-17) living in (quasi-) jobless households	60.3	54.0	56.0	79.2	84.4	81.3	68.6	72.1	78.0	5.9 pp	17.7 pp	67.1	69.9
	At-risk-of-poverty rate for children (0-17) living in households at work	21.4	22.8	21.6	19.2	22.1	20.4	20.6	21.2	20.1	-1.1 pp	-1.3 pp	16.0	16.0
	Childcare 1-29 hours per week (% 0-3 years children)	5.0	4.0	3.0	4.0	5.0	8.0	5.5	4.9		-0.6 pp	-0.1 pp	14.0	14.7
	Childcare more than 30 hours per week (% 0-3 years children)	7.0	7.0	5.0	15.0	15.0	6.0	7.3	6.5		-0.8 pp	-0.5 pp	14.4	15.6
Access to adequate resources	Childcare 1-29 hours per week (% 3 years to mandatory school age children)	40.0	41.0	46.0	43.0	37.0	39.0	26.1	41.1		15.0 pp	1.1 pp	33.9	33.9
	Childcare more than 30 hours per week (% 3 years to mandatory school age children)	27.0	27.0	23.0	32.0	39.0	30.0	30.4	26.0		-4.4 pp	-1.0 pp	49.2	49.4
	Relative median at-risk-of-poverty gap (0-17)	26.0	26.4	26.0	27.4	36.0	39.0	34.4	34.5	33.3	-1.2 pp	7.3 pp	25.9	26.0
	Part time due to care responsibilities (total)	11.4	9.1	7.2	5.8	5.6	4.1	2.7	2.8	2.6	-0.2 pp	-8.8 pp	21.7	21.7
	Part time due to care responsibilities (male)												4.2	4.4
	Part time due to care responsibilities (female)	15.7	12.8	10.5	9.0	8.6	6.6	4.6	4.6	4.2	-0.4 pp	-11.5 pp	27.1	27.2
	Impact of social transfers (excl. pensions) in reducing child poverty	10.9	6.0	10.9	10.6	9.7	18.2	17.7	18.4		0.7 pp	7.6 pp	39.2	39.0
	Housing cost overburden rate (0-17)	27.4	26.5	20.2	27.4	38.4	44.0	46.5	49.2	50.1	0.9 pp	22.7 pp	10.8	10.7
	NEET rate (15-19)	6.8	6.9	7.9	8.6	10.0	10.2	9.7	8.5	8.7	0.2 pp	1.9 pp	6.5	6.3
	Early leavers from education and training (18-24)	14.4	14.2	13.5	12.9	11.3	10.1	9.0	7.9	6.2	-1.7 pp	-8.2 pp	11.2	11.0
Access to quality services	Self reported unmet need for medical care (16-24)	1.2	2.0	1.3	2.4	1.9	3.5	4.7	3.7		-1.0 pp	2.5 pp	1.5	1.3
	Infant mortality rate	2.7	3.1	3.8	3.4	2.9	3.7	3.7	4.0		0.3 pp	1.3 pp	3.7	3.6
	Severe housing deprivation (0-17)	9.3	8.3	7.9	7.1	5.8	7.7	7.1	8.2	8.0	-0.2 pp	-1.3 pp	7.4	7.4
	Overcrowding rate (0-17)	30.6	27.9	29.0	28.9	27.3	32.9	32.7	34.6	36.8	2.2 pp	6.2 pp	22.6	23.0

Source: Eurostat (EU-SILC, LFS, Mortality data)

LONG-TERM ADEQUACY OF PENSIONS: THEORETICAL REPLACEMENT RATES (2013-2053)

TRR case		Net				Gross			
		2013		2053		2013		2053	
		Men	Women	Men	Women	Men	Women	Men	Women
Average Earnings	Base case I: 40 years up to age 65	n.a.	n.a.	47.0		n.a.	n.a.	47.2	
	Base case II: 40 years up to the SPA	n.a.	n.a.	43.0		n.a.	n.a.	46.1	
	Increased SPA: from age 25 to SPA	n.a.	n.a.	47.0		n.a.	n.a.	47.2	
	AWG career length case	n.a.	n.a.	49.7	48.6	n.a.	n.a.	50.0	48.9
	Longer career I: from age 25 to 67			48.1				48.3	
	Shorter career I: from age 25 to 63			43.8				44.0	
	Longer career I: from age 25 to SPA+2			48.1				48.3	
	Shorter career I: from age 25 to SPA-2			43.8				44.0	
	Career break – unemployment: 1 year			47.0				47.2	
	Career break – unemployment: 2 years			47.0				47.2	
	Career break – unemployment: 3 years			47.0				47.2	
	Career break due to child care: 0 year				47.0				47.2
	Career break due to child care: 1 year				47.0				47.2
	Career break due to child care: 2 years				47.0				47.2
	Career break due to child care: 3 years				47.0				47.2
	Short career (30 year career)			39.4				39.5	
	Early retirement due to unemployment			47.0				47.2	
	Early retirement due to disability			47.0				47.2	
	Indexation: 10 years after retirement			37.3				37.4	
Low Earnings (66%)	Base case I: 40 years up to age 65	n.a.	n.a.	51.4		n.a.	n.a.	56.2	
	Base case II: 40 years up to the SPA	n.a.	n.a.	39.2		n.a.	n.a.	38.7	
	Increased SPA: from age 25 to SPA	n.a.	n.a.	51.4		n.a.	n.a.	56.2	
	AWG career length case	n.a.	n.a.	53.2	52.4	n.a.	n.a.	58.3	57.4
	Longer career I: from age 25 to 67			52.1				48.3	
	Shorter career I: from age 25 to 63			47.7				44.0	
	Longer career I: from age 25 to SPA+2			52.1				48.3	
	Shorter career I: from age 25 to SPA-2			47.7				44.0	
	Career break – unemployment: 1 year			51.4				56.2	
	Career break – unemployment: 2 years			51.4				56.2	
	Career break – unemployment: 3 years			51.4				56.2	
	Career break due to child care: 0 year				51.4				56.2
	Career break due to child care: 1 year				51.4				56.2
	Career break due to child care: 2 years				51.4				56.2
	Career break due to child care: 3 years				51.4				56.2
	Short career (30 year career)	n.a.	n.a.	44.4		n.a.	n.a.	48.4	
	Early retirement due to unemployment			51.4				56.2	
	Early retirement due to disability			51.4				56.2	
	Pension rights of surviving spouses				98.1				108.2
High	Base case I: 40 years up to age 65	n.a.	n.a.	51.4		n.a.	n.a.	56.2	
	Base case II: 40 years up to the SPA	n.a.	n.a.	29.0		n.a.	n.a.	26.3	

Source: Joint SPC/EC 2015 report on Pension Adequacy in the European Union (2013-2053)

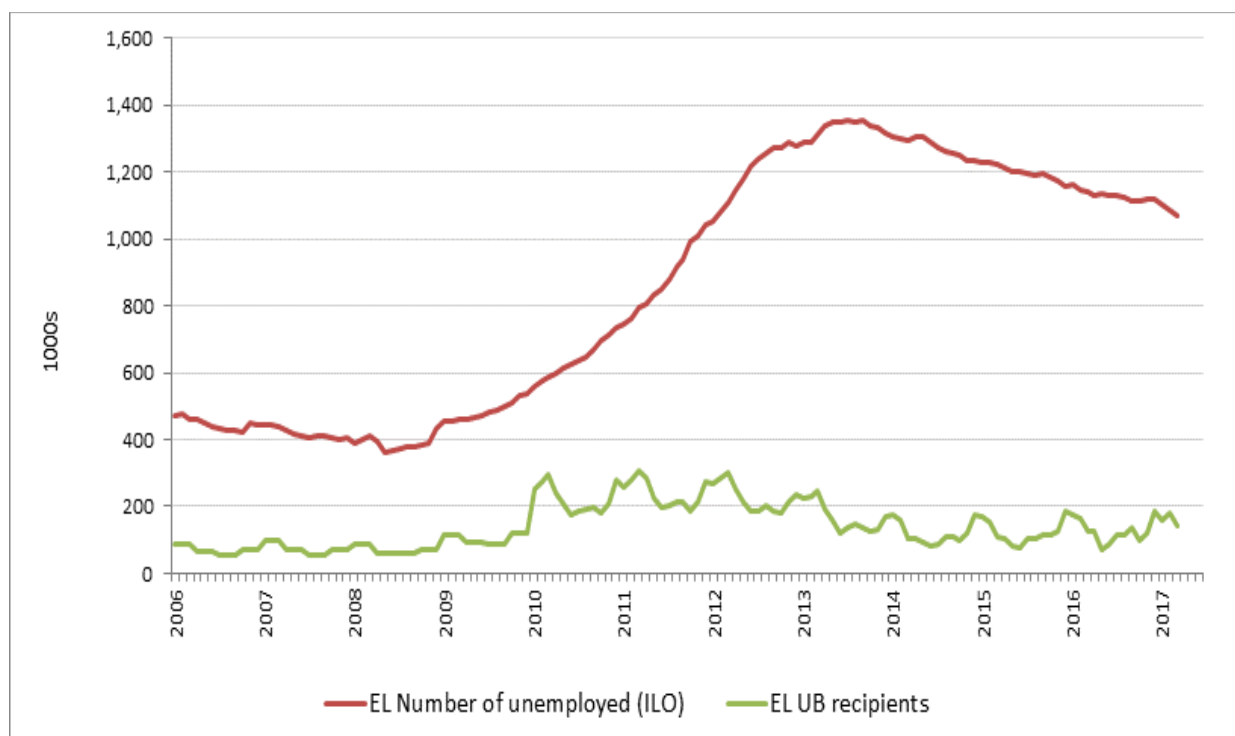
HEALTH CARE SYSTEMS

EL									EU28	
	2008	2009	2010	2011	2012	2013	2014	2015	2014	2015
Healthy life years at birth (years) - male	65.6	66.1	66.1	66.2	64.8	64.7	64.1	63.9	61.4	62.6
Healthy life years at birth (years) - female	66.2	66.8	67.7	66.9	64.9	65.1	64.8	64.1	61.8	63.3
Healthy life years at 65 (years) - male	9.0	7.9	8.7	9.0	8.6	8.0	7.7	7.9	8.6	9.4
Healthy life years at 65 (years) - female	8.4	7.3	8.2	7.9	7.3	6.8	7.1	7.5	8.6	9.4
Life expectancy at birth (years) - male	77.5	77.8	78.0	78.0	78.0	78.7	78.9	78.5	78.1	77.9
Life expectancy at birth (years) - female	83.0	82.7	83.3	83.6	83.4	84.0	84.1	83.7	83.6	83.3
Life expectancy at 65 (years) - male	17.7	18.1	18.2	18.2	18.1	18.7	18.8	18.5	18.2	17.9
Life expectancy at 65 (years) - female	20.5	20.2	20.9	21.2	20.9	21.6	21.6	21.3	21.6	21.2
Self reported unmet need for medical examination or treatment	5.4	5.5	5.5	7.5	8.0	9.0	10.9	12.3	3.6	3.2
Self-perceived health (%)	76.0	75.4	75.5	76.4	74.8	73.9	73.5	74.4	67.4	66.9
Total health care expenditure per capita (PPS)		2253.4	2042.3	2000.3	1812.0	1563.9	1519.1	1638.8		
Total health care expenditure (% of GDP)		10.2	9.5	9.8	9.3	8.3	7.9	8.4		

Source: Eurostat (EU-SILC, Mortality data, SHA)

Note: i) Self-perceived health refers to the percentage of the population reporting either good or very good health; ii) Total health care expenditure figures are based on SHA 1.0 from 2008-2012, and on SHA 2011 for 2013 onwards, hence there is a break in series in 2013.

TRENDS IN TAKE-UP OF SELECTED BENEFITS¹⁵



¹⁵ These data have been collected by the SPC in the context of monitoring the social impact of the crisis. It includes only a selection of benefits which have been considered most reactive to the crisis. The number of unemployed (standard definition by the ILO) are given as a background.

EL	Unemployment
definition	Unemployment according to ILO definition - Total
unit	Thousands of persons - seasonally adjusted
source	Hellenic Statistical Authority (ELSTAT), Labour Force Survey
comment	Data as on 9 June 2017
	Unemployment benefit
definition	Registered at the National Manpower Agency (OAED) receiving the Unemployment Benefit
unit	thousands of receivers
source	National Manpower Agency (OAED)
comment	Data 2010-2017 updated as on 9 June 2017

SUMMARY TABLE OF MAIN SOCIAL TRENDS

Group	Indicator	EL										EU27			
		2008	2009	2010	2011	2012	2013	2014	2015	2016	change 2014-2015 (2015-2016 for SMD & LFS-based figures)	change 2008 to latest year	latest year change	2015	
Europe 2020	At risk of poverty or social exclusion (in %)	28.1	27.6	27.7	31.0	34.6	35.7	36.0	35.7	n.a.	-0.3 pp	7.6 pp	23.7	-0.7 pp	0.0 pp
	At-risk-of-poverty rate (in %)	20.1	19.7	20.1	21.4	23.1	23.1	22.1	21.4	n.a.	-0.7 pp	1.3 pp	17.3	0.1 pp	0.8 pp
	At-risk-of-poverty threshold for a single person household (levels in pps, changes as real change in national currency in %)	7219	7521	7559	6976	6038	5427	5166	5281	n.a.	-1.0 %	-34.9 %	n.a.	n.a.	n.a.
	Severe material deprivation rate (in %)	11.2	11.0	11.6	15.2	19.5	20.3	21.5	22.2	22.2	0.0 pp	11.0 pp	8.0	-0.3 pp	-0.8 pp
	Population living in (quasi-) jobless households (in %)	7.5	6.6	7.6	12.0	14.2	18.2	17.2	16.8	n.a.	-0.4 pp	9.3 pp	10.6	-0.6 pp	1.4 pp
Intensity of poverty risk	Relative median at-risk-of-poverty gap (in %)	24.7	24.1	23.4	26.1	29.9	32.7	31.3	30.6	n.a.	-0.7 pp	5.9 pp	24.8	0.3 pp	2.9 pp
Persistence of poverty risk	Persistent at-risk-of-poverty rate (in %)	13.0	16.1	17.6	10.5	13.8	12.4	14.5	13.3	n.a.	-1.2 pp	0.3 pp	10.9	0.6 pp	2.2 pp
Income inequalities	Income quintile ratio (S80/S20)	5.9	5.8	5.6	6.0	6.6	6.6	6.5	6.5	n.a.	0.0 %	10.2 %	5.2	0.0 %	4.0 %
Child poverty and social exclusion	At-risk of poverty or social exclusion rate of children (% of people aged 0-17)	28.7	30.0	28.7	30.4	35.4	38.1	36.7	37.8	n.a.	1.1 pp	9.1 pp	26.9	-0.8 pp	0.5 pp
Effectiveness of social protection system	Impact of social transfers (excl. pensions) on poverty reduction (%)	13.7	13.2	15.6	13.7	13.8	17.5	15.0	16.1	n.a.	1.1 pp	2.3 pp	33.5	-0.6 pp	-1.3 pp
	Impact of social transfers (incl. pensions) on poverty reduction (%)	51.6	53.1	53.0	52.3	53.6	56.7	57.7	59.5	n.a.	1.9 pp	8.0 pp	61.2	-0.3 pp	0.5 pp
Social consequences of labour market	At-risk-of-poverty rate for the population living in (quasi-) jobless households	40.3	35.8	39.1	54.1	56.8	58.4	51.1	51.6	n.a.	0.5 pp	11.3 pp	58.9	0.9 pp	3.2 pp
	In-work at-risk of poverty rate (in %)	14.2	13.7	13.9	11.9	15.1	13.0	13.2	13.4	n.a.	0.2 pp	-0.8 pp	9.5	-0.1 pp	1.0 pp
	Long-term unemployment rate (in %)	3.7	3.9	5.7	8.8	14.5	18.5	19.5	18.2	17.0	-1.2 pp	13.3 pp	4.5	-0.6 pp	1.3 pp
Youth exclusion	Early school leavers (in %)	14.4	14.2	13.5	12.9	11.3	10.1	9.0	7.9	6.2	-1.7 pp	-8.2 pp	11.0	-0.2 pp	-4.0 pp
	Youth unemployment ratio (15-24)	6.6	7.9	9.9	13.0	16.1	16.5	14.7	12.9	11.7	-1.2 pp	5.1 pp	8.4	-0.7 pp	0.8 pp
Active ageing	NEETs (15-24)	11.4	12.4	14.8	17.4	20.2	20.4	19.1	17.2	15.8	-1.4 pp	4.4 pp	12.0	-0.5 pp	0.6 pp
	Employment rate of older workers (55-64) in %	43.0	42.4	42.4	39.5	36.5	35.6	34.0	34.3	36.3	2.0 pp	-6.7 pp	53.4	2.0 pp	9.9 pp
Pension adequacy	At risk of poverty or social exclusion for the elderly (65+) in %	28.1	26.8	26.7	29.3	23.5	23.1	23.0	22.8	n.a.	-0.2 pp	-5.3 pp	17.3	-0.4 pp	-6.0 pp
	Median relative income of elderly people	0.86	0.86	0.84	0.81	1.01	1.04	1.00	1.04	n.a.	4.0 %	20.9 %	0.93	-1.1 %	9.4 %
Health	Aggregate replacement ratio	0.41	0.41	0.42	0.45	0.52	0.60	0.60	0.61	n.a.	1.7 %	48.8 %	0.57	1.8 %	16.3 %
	Self reported unmet need for medical care	5.4	5.5	5.5	7.5	8.0	9.0	10.9	12.3	n.a.	1.4 pp	6.9 pp	3.2	-0.4 pp	0.1 pp
	Healthy life years at 65 - males	9.0	7.9	8.7	9.0	8.6	8.0	7.7	7.9	n.a.	2.6 %	-12.2 %	n.a.	n.a.	n.a.
Access to decent housing	Healthy life years at 65 - females	8.4	7.3	8.2	7.9	7.3	6.8	7.1	7.5	n.a.	5.6 %	-10.7 %	n.a.	n.a.	n.a.
	Housing cost overburden rate	22.2	21.8	18.1	24.2	33.1	36.9	40.7	40.9	n.a.	0.2 pp	18.7 pp	11.3	-0.3 pp	0.8 pp
Evolution in real household disposable income	Real change in gross household disposable income (in %)	1.1	0.9	-11.1	-10.6	-8.9	-6.6	0.8	-3.0	n.a.	-3.0 %	-33.3 %	n.a.	n.a.	n.a.

Note: For the poverty threshold values, levels are shown in PPS but changes are shown as changes in national currency terms and accounting for inflation. For consistency with the main SPPM dashboard latest changes refer to 2014-2015 for EU-SILC based indicators (except SMD) and 2015-2016 for SMD and LFS-based indicators, while changes since 2008 refer to 2008-2015 and 2008-2016 respectively.

KEY SOCIAL CHALLENGES AND GOOD SOCIAL OUTCOMES, GREECE 2017

Social policy area	Key social challenge	Good social outcome
1. Preventing poverty and social exclusion through inclusive labour markets, adequate and sustainable social protection and high quality services	<p>At-risk-of-poverty or social exclusion is significantly worse than the EU average, in particular for working age population and children.</p> <p>Severe material deprivation (4+) is significantly worse than the EU average (worse for all age group but in particular for children and working age population).</p> <p>Share of people living in (quasi-) jobless households is significantly worse than the EU average (also for working age people and children).</p> <p>Inequalities (S80/S20) are higher than the EU average.</p> <p>Housing cost overburden is significantly higher than EU average (for all age group but in particular for elderly).</p>	
2. Breaking the intergenerational transmission of poverty – tackling child poverty	<p>The ‘children at-risk-of poverty rate’ indicators are worse than the EU average.</p>	
3. Active inclusion – tackling poverty in working age	<p>Impact of social transfers (other than pensions) in reducing working age poverty significantly worse than the EU average.</p> <p>The poverty gap (18-64) is worse than the EU average.</p>	<p>The ‘at-risk of poverty rate for population living in (quasi-)jobless households (18-59)’ indicator is around the EU average but shows a significantly positive development.</p>
4. Elderly poverty/adequate income and living conditions of the elderly		
5. Health & LTC	<p>Unmet need for medical care, in particular due to costs, and the gap in unmet need between the bottom and the top income quintile are significantly worse than the EU average.</p> <p><i>Greece is lagging behind in public health prevention, combined with an ineffectively high antibiotics prescription¹⁶.</i></p>	<p>The vaccination coverage rate of children for DTP is significantly above the 95% threshold.</p>
6. Other key issues		

Note: The assessment of the key social challenges and good social outcomes within EU Member States is based on a full analysis of all the indicators in the social policy area of the Joint Assessment Framework tool, not only those included in the tables in this Country Profile.

¹⁶ Sources: EPC and COM. Joint report on health systems 2017; Health at a Glance 2016.