



Council of the  
European Union

Brussels, 26 October 2017  
(OR. en)

13579/17

ACP 115  
FIN 645  
PTOM 18

## COVER NOTE

---

From:	Secretary-General of the European Commission, signed by Mr Jordi AYET PUIGARNAU, Director
date of receipt:	25 October 2017
To:	Mr Jeppe TRANHOLM-MIKKELSEN, Secretary-General of the Council of the European Union
No. Cion doc.:	COM(2017) 622 final
Subject:	COMMUNICATION FROM THE COMMISSION TO THE COUNCIL European Development Fund (EDF): forecasts of commitments, payments and contributions from Member States for 2017, 2018, 2019 and non- binding forecast for the years 2020-2021

---

Delegations will find attached document COM(2017) 622 final.

---

Encl.: COM(2017) 622 final



Brussels, 25.10.2017  
COM(2017) 622 final

**COMMUNICATION FROM THE COMMISSION TO THE COUNCIL**

**European Development Fund (EDF): forecasts of commitments, payments and contributions from Member States for 2017, 2018, 2019 and non-binding forecast for the years 2020-2021**

## 1. FOREWORD

In accordance with Article 7(1) of the 11<sup>th</sup> EDF Internal Agreement<sup>1</sup> and Article 21(2) of the Council Regulation (EU) 2015/323<sup>2</sup> on the Financial Regulation applicable to the 11<sup>th</sup> European Development Fund (hereinafter referred to as "11<sup>th</sup> EDF Financial Regulation"), the Commission presents in this document estimates of commitments, payments and contributions for the period 2017 to 2019, taking into account the forecasts of the European Investment Bank (EIB).

This document sets out the financial implementation forecasts of the EDFs (Eighth to 11<sup>th</sup>) for 2017 until 2019. In addition, this document draws a non-binding estimation, for the EDF contributions from the Member States, for the years 2020 and 2021.

Member States contribute funds directly to the European Investment Bank (EIB) for the instruments which it manages under the Ninth, 10<sup>th</sup>, and 11<sup>th</sup> EDFs (the Investment Facility and interest-rate subsidies).

## 2. INTRODUCTION

The Commission and the EIB have updated their commitment and payment forecasts for 2017, 2018 and 2019 for each of the ACP countries<sup>3</sup> and the OCTs<sup>4</sup>. The payment forecasts in particular have been compiled with the aim of helping Member States to assess as accurately as possible the amounts they need to earmark in their national budgets while ensuring that sufficient financial resources are available for the EDF to avoid liquidity problems.

In accordance with Article 7 of the 11<sup>th</sup> EDF Internal Agreement<sup>5</sup> and Article 21(2) of the 11<sup>th</sup> EDF Financial Regulation<sup>6</sup>, the estimates of commitments and payments have been updated following the latest forecasts.

The graph below shows the general evolution in gross commitments and payments since 1999 until 2016 and projections for the period 2017-2019 (Commission and EIB cumulated amounts).

---

<sup>1</sup> Internal Agreement between the Representatives of the Governments of the Member States of the European Union, meeting within the Council, on the financing of European Union aid under the multiannual financial framework for the period 2014 to 2020, in accordance with the ACP-EU Partnership Agreement, and on the allocation of financial assistance for the Overseas Countries and Territories to which Part Four of the Treaty on the Functioning of the European Union applies (OJ L 210, 06.08.2013, p. 1-14).

<sup>2</sup> Council Regulation (EU) 2015/323 of 2 March 2015 on the Financial Regulation applicable to the 11<sup>th</sup> European Development Fund (OJ L 58, 03.03.2015, p. 17-38).

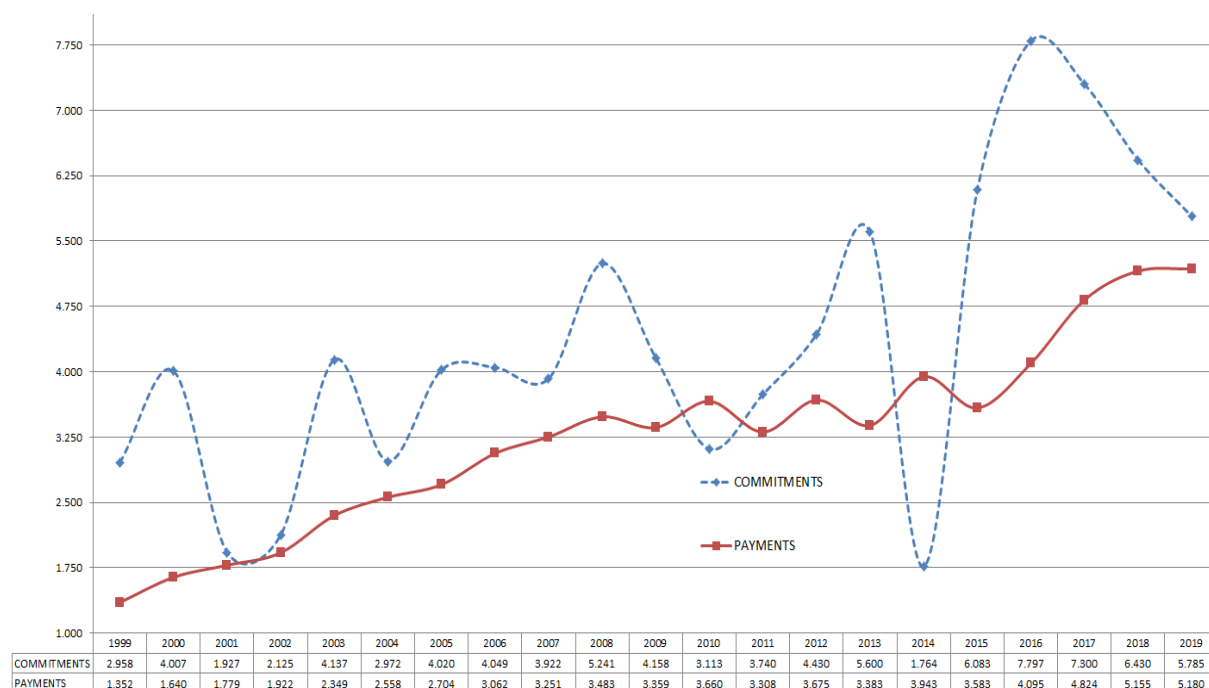
<sup>3</sup> African, Caribbean and Pacific States.

<sup>4</sup> Overseas Countries and Territories.

<sup>5</sup> OJ L 210, 06.08.2013.

<sup>6</sup> OJ L 58, 03.03.2015.

## Gross commitments and payments: trend 1999-2019 (EUR Million)



Note: Figures from implementation of the European Development Funds until 31 December 2016 (commitments and payments) and forecasts for 2017-2019.

### 3. FINANCIAL FORECASTS FOR 2017 - 2019 (EUR MILLION)

The following table provides an update of the commitments, the payments and of the contributions, based on the Commission's latest forecasts.

Forecasts 2017-2019 (*)		2017	2018	2019
Commitments	Commission	6 510	5 550	4 855
	EIB	790	880	930
	<b>Total</b>	<b>7 300</b>	<b>6 430</b>	<b>5 785</b>
Payments	Commission	4 304	4 600	4 600
	EIB	520	555	580
	<b>Total</b>	<b>4 824</b>	<b>5 155</b>	<b>5 180</b>
<b>Contributions</b>	Commission	3 850	4 550	4 600
	EIB	150	250**	300
	<b>Total</b>	<b>4 000</b>	<b>4 800</b>	<b>4 900</b>

\* Gross amounts, i.e. no decommitments or recoveries/reflows have been deducted. This approach is in line with that used for the general budget of the Union.

\*\* ref. EIB explanatory note for information of 17/11/2015, MD no: 151/15 ADD 1 ACP

#### 4. NON-BINDING ESTIMATES OF CONTRIBUTIONS FOR 2020 - 2021 (EUR MILLION)

Forecasts 2020-2021 (*)		2020	2021
Contributions	Commission	4 600	4 700
	EIB	300	300
	<b>Total</b>	<b>4 900</b>	<b>5 000</b>

\* Art.21 (2) 11<sup>th</sup> EDF Financial Regulation (EU 2015/323): indicative, non-binding forecast based on a statistical approach for the expected annual amounts of contributions for the years n + 3 and n + 4.

#### 5. FINANCIAL IMPLEMENTATION FORECASTS FOR 2017, 2018 AND 2019.

The updated forecasts are set out in attachments 1 to 3.

The estimates for 2017 commitments and payments that were indicated in the June 2017 Communication have been revised upwards, based on the last forecasts.

In 2017, record EDF payments are expected along with a high level of commitments. This would keep the 11<sup>th</sup> EDF on track for full commitment at the end of the implementation period.

However, coming as it does after a record of payment performance in 2016, the expected record payment performance in 2017 will add further pressure upon an already tight treasury, for the period 2017-2019, as shown in attachment 3 (with a negative or near-zero balance at year end for the Commission).

Now that the 11<sup>th</sup> EDF has reached cruising speed, there is less volatility in long-term payment forecasts. It is therefore easier for the Commission to propose a smoother profile for Member States' contributions from 2018 and onwards. This smoothing out of contributions ("lissage") is a key request from Member States.

Attachments 1, 2 and 3 show respectively forecasts of commitments, forecasts of payments and the financial situation compared with previous forecasts for the period 2017-2019.

Attachments 4 and 5 show respectively contributions for 2017 and for 2018 per instalment and per Member State.

Attachment 6 shows the yearly contributions for the period 2017-2021 per Member State.

**5.1. Attachment 1: forecasts for commitments<sup>7</sup> for 2017, 2018 and 2019 (EUR million)**

	2017		2018		2019
	Communication June 2017	Communication October 2017	Communication June 2017	Communication October 2017	Communication October 2017
Regions					
East and Southern Africa	1 528	1 661			
West and Central Africa	1 943	2 237			
Latin America and Caribbean	352	280			
Pacific	230	191			
<b>Sub-total*</b>	<b>4 052</b>	<b>4 369</b>			
Other					
Peace Facility, Human rights	427	401			
EU-Africa, African Peace					
Facility	430	437			
Planet and Prosperity	367	814			
Resources, Evaluation, process	187	337			
DG ECHO, EACEA, DG EAC	166	152			
<b>Sub-total*</b>	<b>1 576</b>	<b>2 142</b>			
<b>Total European Commission*</b>	<b>5 629</b>	<b>6 510</b>	<b>4 550</b>	<b>5 550</b>	<b>4 855</b>
Investment facility	775	700	800	800	850
Interest rate subsidies (**)	80	90	80	80	80
<b>Total EIB*</b>	<b>855</b>	<b>790</b>	<b>880</b>	<b>880</b>	<b>930</b>
<b>TOTAL European Commission + EIB*</b>	<b>6 484</b>	<b>7 300</b>	<b>5 430</b>	<b>6 430</b>	<b>5 785</b>

\* Due to the rounding effects, the sum of individual rounded amounts shown may differ slightly from the corresponding totals

\*\* Including interest rate subsidies under previous EDFs

<sup>7</sup> Gross commitments, i.e. without de-commitments being deducted.

5.2. Attachment 2: forecasts for payments<sup>8</sup> for 2017, 2018 and 2019 (EUR million)

	2017		2018		2019
	Communication June 2017	Communication October 2017	Communication June 2017	Communication October 2017	Communication October 2017
Regions					
East and Southern Africa	1 229	1 188			
West and Central Africa	1 606	1 604			
Latin America and Caribbean	199	177			
Pacific	113	95			
<b>Sub-total*</b>	<b>3 148</b>	<b>3 064</b>			
Other					
Peace Facility, Human rights	146	188			
EU-Africa, African Peace Facility	344	362			
Planet and Prosperity	105	242			
Resources, Evaluation, process	142	274			
DG ECHO, EACEA, DG EAC	179	173			
<b>Sub-total*</b>	<b>916</b>	<b>1 240</b>			
<b>Total European Commission*</b>	<b>4 064</b>	<b>4 304</b>	<b>4 600</b>	<b>4 600</b>	<b>4 600</b>
Investment facility	500	500	525	525	550
Interest rate subsidies (**)	40	20	40	30	30
<b>Total EIB*</b>	<b>540</b>	<b>520</b>	<b>565</b>	<b>555</b>	<b>580</b>
<b>TOTAL European Commission + EIB*</b>	<b>4 604</b>	<b>4 824</b>	<b>5 165</b>	<b>5 155</b>	<b>5 180</b>

\* Due to the rounding effects, the sum of individual rounded amounts shown may differ slightly from the corresponding totals

\*\* Including interest rate subsidies under previous EDFs

<sup>8</sup> Gross payments, i.e. without recoveries being deducted.

**5.3. Attachment 3: Financial situation, forecasts for 2017-2019 and non-binding estimations for 2020 - 2021 (EUR million):**

	Communication June 2017 <sup>1</sup>			Communication October 2017		
	Commission	EIB <sup>5</sup>	TOTAL	Commission	EIB <sup>5</sup>	TOTAL
<b>2017</b>						
<b>Balance 31/12/2016<sup>1</sup></b>	<b>561</b>	<b>40</b>	<b>601</b>	<b>561</b>	<b>40</b>	<b>601</b>
<b>Member States Contributions for 2017:</b>						
1st instalment	3 850	150	4 000	3 850	150	4 000
2nd instalment	1 700	100	1 800	1 700	100	1 800
3rd instalment	1 300	50	1 350	1 300	50	1 350
Reflows <sup>2</sup>	850	0	850	850	0	850
Contrib. & Adjust. 2017 received in 2016	-261	350	350	-261	300	300
Recoveries, interest and other incomes	50		50	64		64
Total payments <sup>3</sup>	-4 064	-540	-4 604	-4 304	-520	-4 824
<b>Balance at 31/12/2017<sup>6</sup></b>	<b>136</b>	<b>0</b>	<b>136</b>	<b>-90</b>	<b>-30</b>	<b>-120</b>
<b>2018</b>						
<b>Member States Contributions for 2018:</b>						
1st instalment	4 550	250	4 800	4 550	250	4 800
2nd instalment			0	2 050	150	2 200
3rd instalment			0	1 500	100	1 600
Reflows <sup>2</sup>		350	350		350	350
Recoveries, interest and other	80		80	80		80
Total payments <sup>3</sup>	-4 600	-565	-5 165	-4 600	-555	-5 155
<b>Balance at 31/12/2018<sup>7</sup></b>	<b>166</b>	<b>35</b>	<b>201</b>	<b>-60</b>	<b>15</b>	<b>-45</b>
<b>2019</b>						
<b>Member States Contributions for 2019:</b>						
Reflows <sup>2</sup>	4 500	400	4 900	4 600	300	4 900
Recoveries, interest and other			0		350	350
Total payments <sup>3</sup>			0	-4 600	-580	-5 165
<b>Balance at 31/12/2019</b>			<b>5 101</b>	<b>20</b>	<b>85</b>	<b>120</b>
<b>2020</b>						
<b>Member States Contributions for 2020<sup>4</sup></b>	<b>4 500</b>	<b>400</b>	<b>4 900</b>	<b>4 600</b>	<b>300</b>	<b>4 900</b>
<b>2021</b>						
<b>Member States Contributions for 2021<sup>4</sup></b>				<b>4 700</b>	<b>300</b>	<b>5 000</b>

<sup>1</sup> Funds available for operations as per Communication from the Commission to the Council;

<sup>2</sup> Net of EIB management fees;

<sup>3</sup> Including interest rates subsidies under the previous EDFs;

<sup>4</sup> Art.21(2)(d) Financial Regulation: non-binding forecast based on a statistical approach for the expected annual contributions for the years n + 3 and n + 4;

<sup>5</sup> Art.21(1), calls for contributions shall first use up the amounts laid down for previous EDFs, one after the other. Therefore calls under the 11th EDF to finance the IFE are further delayed.

<sup>6-7</sup> The EDF treasury balance can never be negative. Any negative amounts in the table indicates a shortage of payment credits.



### 5.4. Attachment 4: Member States contributions for 2017 (EUR)

MEMBER STATES	Key 10 <sup>th</sup> EDF %	Key 11 <sup>th</sup> EDF %	1st instalment		2nd instalment		3rd instalment		Total EIB	Total Commission	Total 2017
			EIB 10 <sup>th</sup> EDF	Commission 10 <sup>th</sup> EDF	EIB 10 <sup>th</sup> EDF	Commission 11 <sup>th</sup> EDF	EIB 10 <sup>th</sup> EDF	Commission 11 <sup>th</sup> EDF			
BELGIUM	3.53	3.24927	3 530 000.00	60 010 000.00	1 765 000.00	2 586 394.39	0.00	27 618 795.00	5 295 000.00	130 074 992.96	135 369 992.96
BULGARIA	0.14	0.21853	140 000.00	2 380 000.00	70 000.00	102 576.55	0.00	1 857 505.00	210 000.00	7 020 856.88	7 230 856.88
CZECH REPUBLIC	0.51	0.79745	510 000.00	8 670 000.00	255 000.00	373 671.71	0.00	6 778 325.00	765 000.00	25 604 563.37	26 369 563.37
DENMARK	2.00	1.98045	2 000 000.00	34 000 000.00	1 000 000.00	1 465 379.26	0.00	16 833 825.00	3 000 000.00	76 593 999.08	79 593 999.08
GERMANY	20.50	20.57980	20 500 000.00	348 500 000.00	10 250 000.00	15 020 137.42	0.00	174 928 300.00	30 750 000.00	790 907 231.37	821 657 231.37
ESTONIA	0.05	0.08635	50 000.00	850 000.00	25 000.00	36 634.48	0.00	733 975.00	75 000.00	2 679 891.73	2 754 891.73
IRELAND	0.91	0.94006	910 000.00	15 470 000.00	455 000.00	666 747.56	0.00	7 990 510.00	1 365 000.00	35 659 265.35	37 024 265.35
GREECE	1.47	1.50735	1 470 000.00	24 990 000.00	735 000.00	1 077 053.76	0.00	12 812 475.00	2 205 000.00	57 370 659.04	59 575 659.04
SPAIN	7.85	7.93248	7 850 000.00	133 450 000.00	3 925 000.00	5 751 613.60	0.00	67 426 080.00	11 775 000.00	303 937 887.76	315 712 887.76
FRANCE	19.55	17.81269	19 550 000.00	332 350 000.00	9 775 000.00	14 324 082.27	0.00	151 407 865.00	29 325 000.00	716 595 744.02	745 920 744.02
CROATIA	0.00	0.22518	0.00	0.00	0.00	0.00	0.00	1 914 030.00	0.00	4 676 382.95	4 676 382.95
ITALY	12.86	12.53009	12 860 000.00	218 620 000.00	6 430 000.00	9 422 388.64	0.00	106 505 765.00	19 290 000.00	488 258 656.64	507 548 656.64
CYPRUS	0.09	0.11162	90 000.00	1 530 000.00	45 000.00	65 942.07	0.00	948 770.00	135 000.00	3 913 989.25	4 048 989.25
LATVIA	0.07	0.11612	70 000.00	1 190 000.00	35 000.00	51 288.27	0.00	987 020.00	105 000.00	3 652 788.35	3 757 788.35
LITHUANIA	0.12	0.18077	120 000.00	2 040 000.00	60 000.00	87 922.76	0.00	1 536 545.00	180 000.00	5 882 029.45	6 062 029.45
LUXEMBOURG	0.27	0.25509	270 000.00	4 590 000.00	135 000.00	197 826.20	0.00	2 168 265.00	405 000.00	10 085 359.40	10 490 359.40
HUNGARY	0.55	0.61456	550 000.00	9 350 000.00	275 000.00	402 979.30	0.00	5 223 760.00	825 000.00	22 515 737.56	23 340 737.56
MALTA	0.03	0.03801	30 000.00	510 000.00	15 000.00	21 980.69	0.00	323 085.00	45 000.00	1 321 346.16	1 366 346.16
NETHERLANDS	4.85	4.77678	4 850 000.00	82 450 000.00	2 425 000.00	3 553 544.71	0.00	40 602 630.00	7 275 000.00	185 204 417.53	192 479 417.53
AUSTRIA	2.41	2.39757	2 410 000.00	40 970 000.00	1 205 000.00	1 765 782.01	0.00	20 379 345.00	3 615 000.00	92 526 862.33	96 141 862.33
POLAND	1.30	2.00734	1 300 000.00	22 100 000.00	650 000.00	952 496.52	0.00	17 062 390.00	1 950 000.00	64 739 549.32	66 689 549.32
PORTUGAL	1.15	1.19679	1 150 000.00	19 550 000.00	575 000.00	842 593.07	0.00	10 172 715.00	1 725 000.00	45 246 702.45	46 971 702.45
ROMANIA	0.37	0.71815	370 000.00	6 290 000.00	185 000.00	271 095.16	0.00	6 104 275.00	555 000.00	21 475 139.11	22 030 139.11
SLOVENIA	0.18	0.22452	180 000.00	3 060 000.00	90 000.00	131 884.13	0.00	1 908 420.00	270 000.00	7 854 560.66	8 124 560.66
SLOVAKIA	0.21	0.37616	210 000.00	3 570 000.00	105 000.00	153 864.82	0.00	3 197 360.00	315 000.00	11 535 696.29	11 850 696.29
FINLAND	1.47	1.50909	1 470 000.00	24 990 000.00	735 000.00	1 077 053.76	0.00	12 827 265.00	2 205 000.00	57 406 794.16	59 611 794.16
SWEDEN	2.74	2.93911	2 740 000.00	46 580 000.00	1 370 000.00	2 007 569.59	0.00	24 982 435.00	4 110 000.00	109 624 979.17	113 734 979.17
UNITED KINGDOM	14.82	14.67862	14 820 000.00	251 940 000.00	7 410 000.00	10 858 460.32	0.00	124 768 270.00	22 230 000.00	567 633 917.66	589 863 917.66
<b>TOTAL EU-28</b>	<b>100.00</b>	<b>100.00</b>	<b>100 000 000.00</b>	<b>1 700 000 000.00</b>	<b>50 000 000.00</b>	<b>73 268 963.00</b>	<b>0.00</b>	<b>850 000 000.00</b>	<b>150 000 000.00</b>	<b>3 850 000 000.00</b>	<b>4 000 000 000.00</b>

### 5.5. Attachment 5: Member States contributions for 2018 (EUR)

MEMBER STATES	Key 10th EDF %	Key 11th EDF %	1st instalment		2nd instalment		3rd instalment		Total EIB	Total Commission	Total 2018
			EIB 10th EDF	Commission 11th EDF	EIB 10th EDF	Commission 11th EDF	EIB 10th EDF	Commission 11th EDF			
BELGIUM	3.53	3.24927	5 295 000.00	66 610 035.00	3 530 000.00	48 739 050.00	0.00	32 492 700.00	8 825 000.00	147 841 785.00	156 666 785.00
BULGARIA	0.14	0.21853	210 000.00	4 479 865.00	140 000.00	3 277 950.00	0.00	2 185 300.00	350 000.00	9 943 115.00	10 293 115.00
CZECH REPUBLIC	0.51	0.79745	765 000.00	16 347 725.00	510 000.00	11 961 750.00	0.00	7 974 500.00	1 275 000.00	36 283 975.00	37 558 975.00
DENMARK	2.00	1.98045	3 000 000.00	40 599 225.00	2 000 000.00	29 706 750.00	0.00	19 804 500.00	5 000 000.00	90 110 475.00	95 110 475.00
GERMANY	20.50	20.57980	30 750 000.00	421 885 900.00	20 500 000.00	308 697 000.00	0.00	205 798 000.00	51 250 000.00	936 380 900.00	987 630 900.00
ESTONIA	0.05	0.08635	75 000.00	1 770 175.00	50 000.00	1 295 250.00	0.00	863 500.00	125 000.00	3 928 925.00	4 053 925.00
IRELAND	0.91	0.94006	1 365 000.00	19 271 230.00	910 000.00	14 100 900.00	0.00	9 400 600.00	2 275 000.00	42 772 730.00	45 047 730.00
GREECE	1.47	1.50735	2 205 000.00	30 900 675.00	1 470 000.00	22 610 250.00	0.00	15 073 500.00	3 675 000.00	68 584 425.00	72 259 425.00
SPAIN	7.85	7.93248	11 775 000.00	162 615 840.00	7 850 000.00	118 987 200.00	0.00	79 324 800.00	19 625 000.00	360 927 840.00	380 552 840.00
FRANCE	19.55	17.81269	29 325 000.00	365 160 145.00	19 550 000.00	267 190 350.00	0.00	178 126 900.00	48 875 000.00	810 477 395.00	859 352 395.00
CROATIA	0.00	0.22518	0.00	4 616 190.00	0.00	3 377 700.00	0.00	2 251 800.00	0.00	10 245 690.00	10 245 690.00
ITALY	12.86	12.53009	19 290 000.00	256 866 845.00	12 860 000.00	187 951 350.00	0.00	125 300 900.00	32 150 000.00	570 119 095.00	602 269 095.00
CYPRUS	0.09	0.11162	135 000.00	2 288 210.00	90 000.00	1 674 300.00	0.00	1 116 200.00	225 000.00	5 078 710.00	5 303 710.00
LATVIA	0.07	0.11612	105 000.00	2 380 460.00	70 000.00	1 741 800.00	0.00	1 161 200.00	175 000.00	5 283 460.00	5 458 460.00
LITHUANIA	0.12	0.18077	180 000.00	3 705 785.00	120 000.00	2 711 550.00	0.00	1 807 700.00	300 000.00	8 225 035.00	8 525 035.00
LUXEMBOURG	0.27	0.25509	405 000.00	5 229 345.00	270 000.00	3 826 350.00	0.00	2 550 900.00	675 000.00	11 606 595.00	12 281 595.00
HUNGARY	0.55	0.61456	825 000.00	12 598 480.00	550 000.00	9 218 400.00	0.00	6 145 600.00	1 375 000.00	27 962 480.00	29 337 480.00
MALTA	0.03	0.03801	45 000.00	779 205.00	30 000.00	570 150.00	0.00	380 100.00	75 000.00	1 729 455.00	1 804 455.00
NETHERLANDS	4.85	4.77678	7 275 000.00	97 923 990.00	4 850 000.00	71 651 700.00	0.00	47 767 800.00	12 125 000.00	217 343 490.00	229 468 490.00
AUSTRIA	2.41	2.39757	3 615 000.00	49 150 185.00	2 410 000.00	35 963 550.00	0.00	23 975 700.00	6 025 000.00	109 089 435.00	115 114 435.00
POLAND	1.30	2.00734	1 950 000.00	41 150 470.00	1 300 000.00	30 110 100.00	0.00	20 073 400.00	3 250 000.00	91 333 970.00	94 583 970.00
PORTUGAL	1.15	1.19679	1 725 000.00	24 534 195.00	1 150 000.00	17 951 850.00	0.00	11 967 900.00	2 875 000.00	54 453 945.00	57 328 945.00
ROMANIA	0.37	0.71815	555 000.00	14 722 075.00	370 000.00	10 772 250.00	0.00	7 181 500.00	925 000.00	32 675 825.00	33 600 825.00
SLOVENIA	0.18	0.22452	270 000.00	4 602 660.00	180 000.00	3 367 800.00	0.00	2 245 200.00	450 000.00	10 215 660.00	10 665 660.00
SLOVAKIA	0.21	0.37616	315 000.00	7 711 280.00	210 000.00	5 642 400.00	0.00	3 761 600.00	525 000.00	17 115 280.00	17 640 280.00
FINLAND	1.47	1.50909	2 205 000.00	30 936 345.00	1 470 000.00	22 636 350.00	0.00	15 090 900.00	3 675 000.00	68 663 595.00	72 338 595.00
SWEDEN	2.74	2.93911	4 110 000.00	60 251 755.00	2 740 000.00	44 086 650.00	0.00	29 391 100.00	6 850 000.00	133 729 505.00	140 579 505.00
UNITED KINGDOM	14.82	14.67862	22 230 000.00	300 911 710.00	14 820 000.00	220 179 300.00	0.00	146 786 200.00	37 050 000.00	667 877 210.00	704 927 210.00
<b>TOTAL EU-28</b>	<b>100.00</b>	<b>100.00</b>	<b>150 000 000.00</b>	<b>2 050 000 000.00</b>	<b>100 000 000.00</b>	<b>1 500 000 000.00</b>	<b>0.00</b>	<b>1 000 000 000.00</b>	<b>250 000 000.00</b>	<b>4 550 000 000.00</b>	<b>4 800 000 000.00</b>

### 5.6. Attachment 6: Member States contributions for 2017-2021 (EUR)

MEMBER STATES	2017			2018			2019			2020			2021			
	COM 10th	COM 11th	EIB 10th	COM 11th	EIB 10th	COM 11th	EIB 10th	COM 11th	EIB 10th	COM 11th	EIB 10th	COM 11th	EIB 10th	COM 11th	EIB 10th	EIB 11th
BELGIUM	62 596 394	67 478 599	5 295 000	147 841 785	8 825 000	149 466 420	10 590 000	149 466 420	10 590 000	149 466 420	10 590 000	152 715 690	2 824 000	152 715 690	2 824 000	7 148 394
BULGARIA	2 482 577	4 538 280	210 000	9 943 115	350 000	10 052 380	420 000	10 052 380	420 000	10 052 380	420 000	10 270 910	1 120 000	10 270 910	1 120 000	480 766
CZECH REPUBLIC	9 043 672	16 560 892	765 000	36 283 975	1 275 000	36 682 700	1 530 000	36 682 700	1 530 000	36 682 700	1 530 000	37 480 150	408 000	37 480 150	408 000	1 754 390
DENMARK	35 465 379	41 128 620	3 000 000	90 110 475	5 000 000	91 100 700	6 000 000	91 100 700	6 000 000	91 100 700	6 000 000	93 081 150	1 600 000	93 081 150	1 600 000	4 356 990
GERMANY	363 520 137	427 387 094	30 750 000	936 380 900	51 250 000	946 670 800	61 500 000	946 670 800	61 500 000	946 670 800	61 500 000	967 250 600	16 400 000	967 250 600	16 400 000	45 275 560
ESTONIA	886 634	1 793 257	75 000	3 928 925	125 000	3 972 100	150 000	3 972 100	150 000	3 972 100	150 000	4 058 450	40 000	4 058 450	40 000	189 970
IRELAND	16 136 748	19 522 518	1 365 000	42 772 730	2 275 000	43 242 760	2 730 000	43 242 760	2 730 000	43 242 760	2 730 000	44 182 820	728 000	44 182 820	728 000	2 068 132
GREECE	26 067 054	31 303 605	2 205 000	68 584 425	3 675 000	69 338 100	4 410 000	69 338 100	4 410 000	69 338 100	4 410 000	70 845 450	1 176 000	70 845 450	1 176 000	3 316 170
SPAIN	139 201 614	164 736 274	11 775 000	360 927 840	19 625 000	364 894 080	23 550 000	364 894 080	23 550 000	364 894 080	23 550 000	372 826 560	6 280 000	372 826 560	6 280 000	17 451 456
FRANCE	346 674 082	369 921 662	29 325 000	810 477 395	48 875 000	819 383 740	58 650 000	819 383 740	58 650 000	819 383 740	58 650 000	837 196 430	15 640 000	837 196 430	15 640 000	39 187 918
CROATIA	0	4 676 383	0	10 245 690	0	10 358 280	0	10 358 280	0	10 358 280	0	10 583 460	0	10 583 460	0	495 396
ITALY	228 042 389	260 216 268	19 290 000	570 119 095	32 150 000	576 384 140	38 580 000	576 384 140	38 580 000	576 384 140	38 580 000	588 914 230	10 288 000	588 914 230	10 288 000	27 566 198
CYPRUS	1 595 942	2 318 047	135 000	5 078 710	225 000	5 134 520	270 000	5 134 520	270 000	5 134 520	270 000	5 246 140	72 000	5 246 140	72 000	245 564
LATVIA	1 241 288	2 411 500	105 000	5 283 460	175 000	5 341 520	210 000	5 341 520	210 000	5 341 520	210 000	5 457 640	56 000	5 457 640	56 000	255 464
LITHUANIA	2 127 923	3 754 107	180 000	8 225 035	300 000	8 315 420	360 000	8 315 420	360 000	8 315 420	360 000	8 496 190	96 000	8 496 190	96 000	397 694
LUXEMBOURG	4 787 826	5 297 533	405 000	11 606 595	675 000	11 734 140	810 000	11 734 140	810 000	11 734 140	810 000	11 989 230	216 000	11 989 230	216 000	561 198
HUNGARY	9 752 979	12 762 758	825 000	27 962 480	1 375 000	28 269 760	1 650 000	28 269 760	1 650 000	28 269 760	1 650 000	28 884 320	440 000	28 884 320	440 000	1 352 032
MALTA	531 981	789 365	45 000	1 729 455	75 000	1 748 460	90 000	1 748 460	90 000	1 748 460	90 000	1 786 470	24 000	1 786 470	24 000	83 622
NETHERLANDS	86 003 545	99 200 873	7 275 000	217 343 490	12 125 000	219 731 880	14 550 000	219 731 880	14 550 000	219 731 880	14 550 000	224 508 660	3 880 000	224 508 660	3 880 000	10 508 916
AUSTRIA	42 735 782	49 791 080	3 615 000	109 089 435	6 025 000	110 288 220	7 230 000	110 288 220	7 230 000	110 288 220	7 230 000	112 685 790	1 928 000	112 685 790	1 928 000	5 274 654
POLAND	23 052 497	41 687 053	1 950 000	91 333 970	3 250 000	92 337 640	3 900 000	92 337 640	3 900 000	92 337 640	3 900 000	94 344 980	1 040 000	94 344 980	1 040 000	4 416 148
PORTUGAL	20 392 593	24 854 109	1 725 000	54 453 945	2 875 000	55 052 340	3 450 000	55 052 340	3 450 000	55 052 340	3 450 000	56 249 130	920 000	56 249 130	920 000	2 632 938
ROMANIA	6 561 095	14 914 044	555 000	32 675 825	925 000	33 034 900	1 110 000	33 034 900	1 110 000	33 034 900	1 110 000	33 753 050	296 000	33 753 050	296 000	1 579 930
SLOVENIA	3 191 884	4 662 677	270 000	10 215 660	450 000	10 327 920	540 000	10 327 920	540 000	10 327 920	540 000	10 552 440	1 440 000	10 552 440	1 440 000	493 944
SLOVAKIA	3 723 865	7 811 831	315 000	17 115 280	525 000	17 303 360	630 000	17 303 360	630 000	17 303 360	630 000	17 679 520	168 000	17 679 520	168 000	827 552
FINLAND	26 067 054	31 339 740	2 205 000	68 663 595	3 675 000	69 418 140	4 410 000	69 418 140	4 410 000	69 418 140	4 410 000	70 927 230	1 176 000	70 927 230	1 176 000	3 319 998
SWEDEN	48 587 570	61 037 410	4 110 000	133 729 505	6 850 000	135 199 060	8 220 000	135 199 060	8 220 000	135 199 060	8 220 000	138 138 170	2 192 000	138 138 170	2 192 000	6 466 042
UNITED KINGDOM	262 798 460	304 835 457	22 230 000	667 877 210	37 050 000	675 216 520	44 460 000	675 216 520	44 460 000	675 216 520	44 460 000	689 895 140	11 856 000	689 895 140	11 856 000	32 292 964
<b>TOTAL EU-28</b>	<b>1 773 268 963</b>	<b>2 076 731 037</b>	<b>150 000 000</b>	<b>4 550 000 000</b>	<b>250 000 000</b>	<b>4 600 000 000</b>	<b>300 000 000</b>	<b>4 600 000 000</b>	<b>300 000 000</b>	<b>4 600 000 000</b>	<b>300 000 000</b>	<b>4 700 000 000</b>	<b>80 000 000</b>	<b>4 700 000 000</b>	<b>80 000 000</b>	<b>220 000 000</b>
		<b>4 000 000 000</b>		<b>4 800 000 000</b>		<b>4 900 000 000</b>		<b>4 900 000 000</b>		<b>4 900 000 000</b>		<b>4 900 000 000</b>		<b>4 900 000 000</b>		<b>5 000 000 000</b>