



EUROPEAN UNION

THE EUROPEAN PARLIAMENT

THE COUNCIL

Brussels, 22 November 2013
(OR. en)

2011/0294 (COD)

PE-CONS 42/13
ADD 7

TRANS 316
ECOFIN 533
ENV 546
RECH 265
CODEC 1403

LEGISLATIVE ACTS AND OTHER INSTRUMENTS

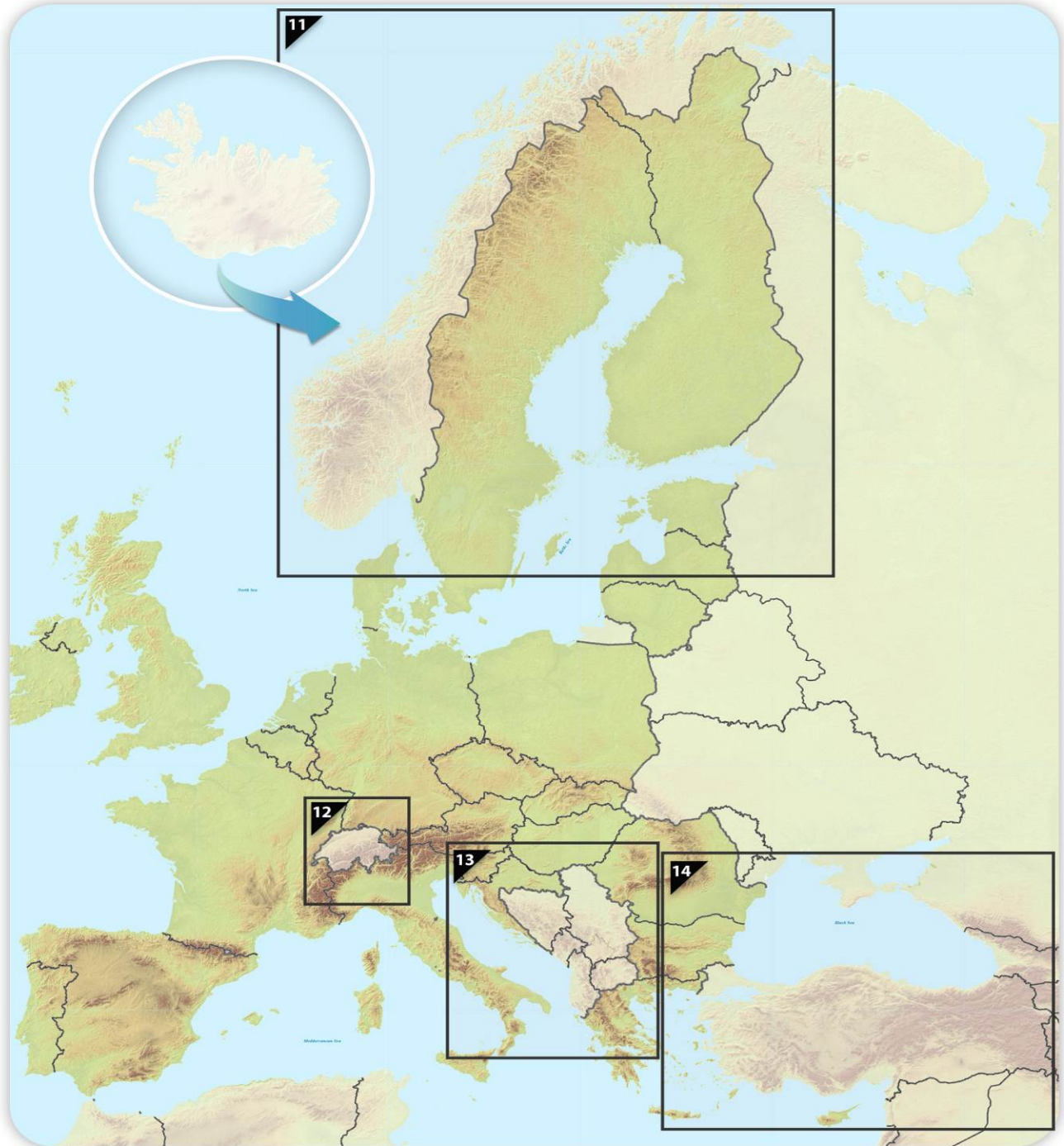
Subject: REGULATION OF THE EUROPEAN PARLIAMENT AND OF THE
COUNCIL on Union guidelines for the development of the trans-European
transport network and repealing Decision No 661/2010/EU

ANNEX III

INDICATIVE MAPS OF THE TRANS-EUROPEAN TRANSPORT NETWORK EXTENDED TO SPECIFIC THIRD COUNTRIES



Map Finder Chart for Neighbouring Countries



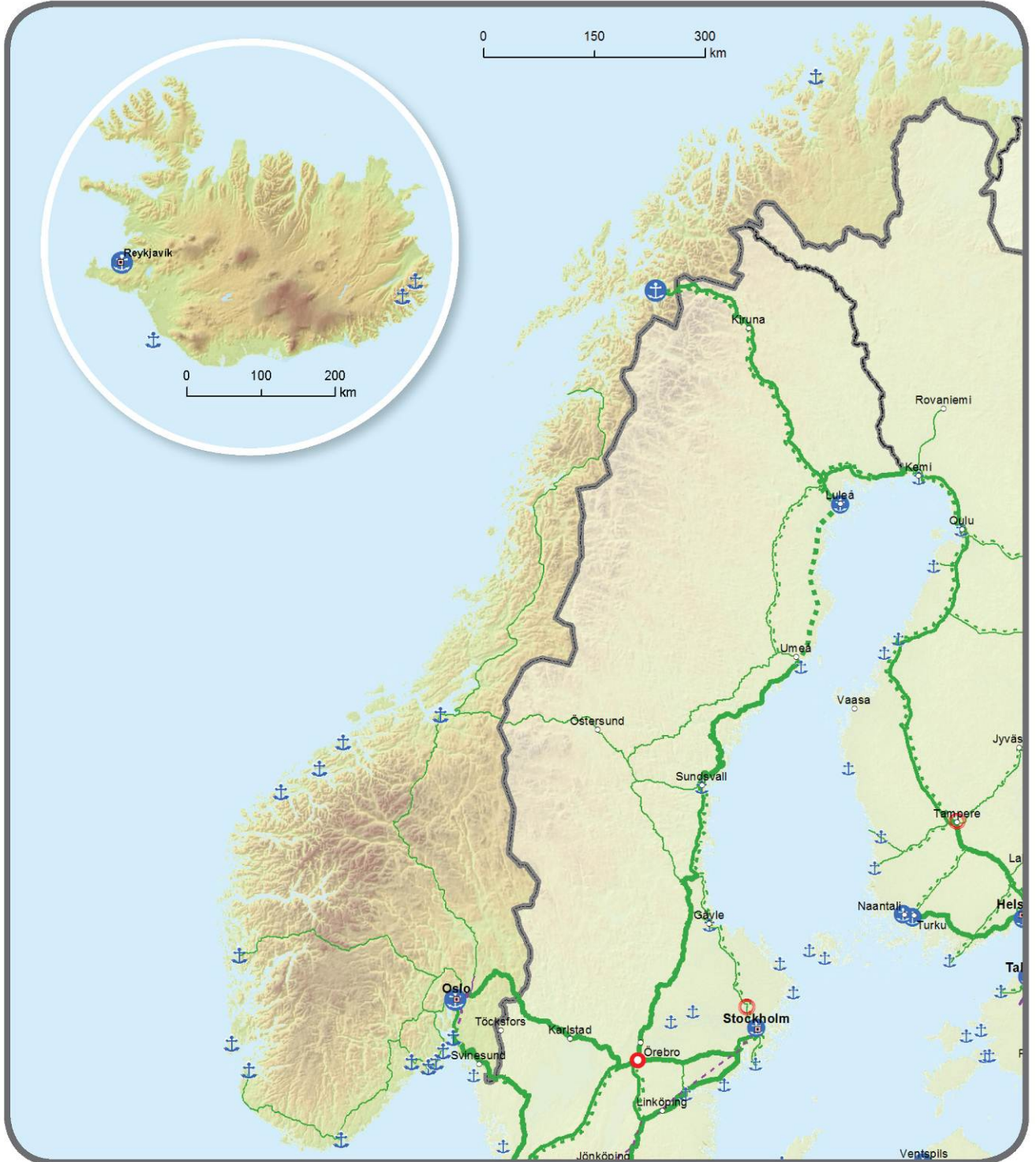


11.1. Indicative Extension to Neighbouring Countries
 Comprehensive & Core Networks: Inland waterways and ports
 Kongeriket Norge / Kongeriket Noreg - Lýðveldið Ísland





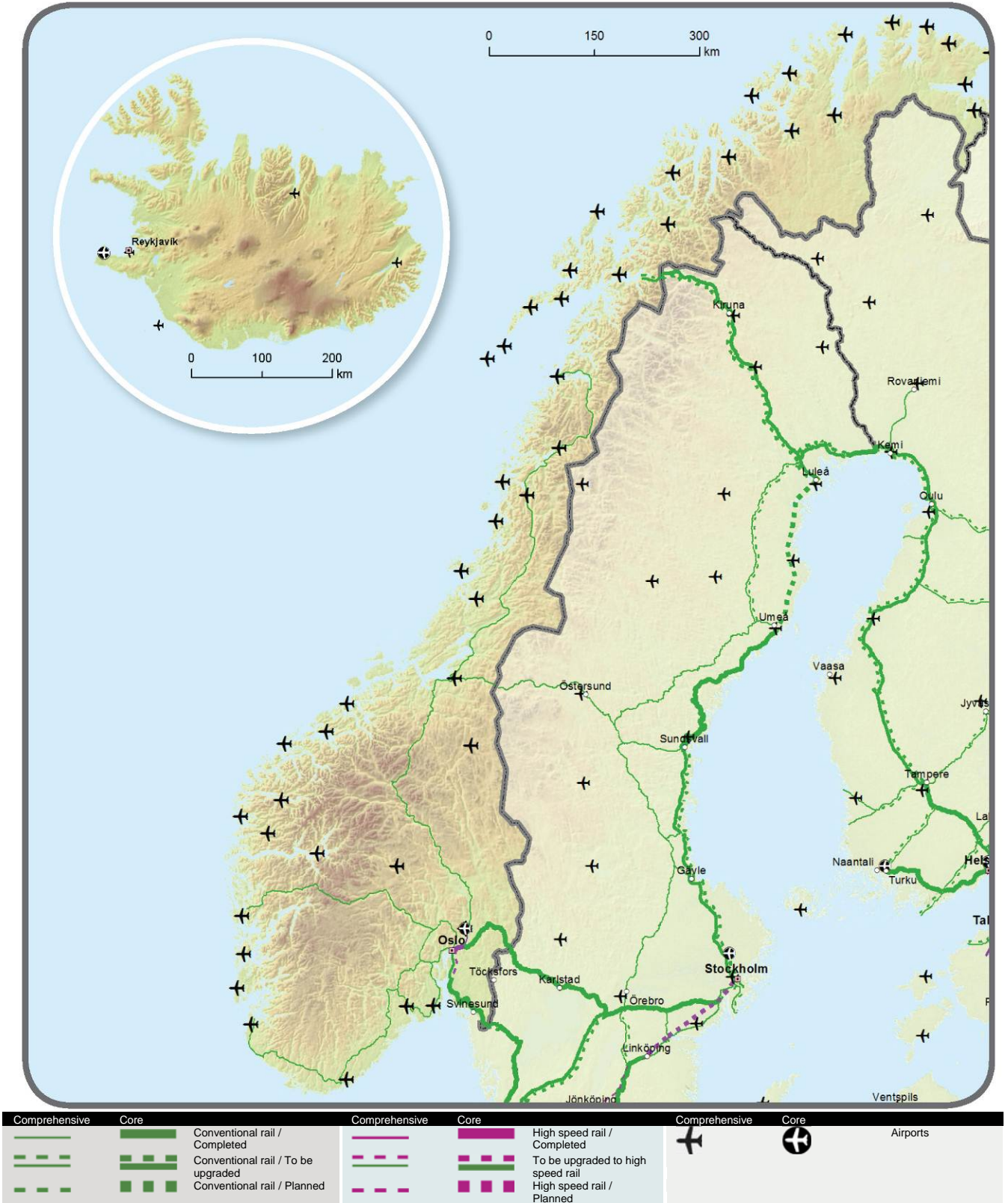
11.2. Indicative Extension to Neighbouring Countries
 Comprehensive Network: Railways, ports and rail-road terminals (RRT)
 Core Network: Railways (freight), ports and rail-road terminals (RRT)
Kongeriket Norge / Kongeriket Noreg - Lýðveldið Ísland



		Conventional rail / Completed			High speed rail / Completed			Ports
		Conventional rail / To be upgraded			To be upgraded to high speed rail			RRT
		Conventional rail / Planned			High speed rail / Planned			



11.3. Indicative Extension to Neighbouring Countries
 Comprehensive Network: Railways and airports
 Core Network: Railways (passengers) and airports
Kongeriket Norge / Kongeriket Noreg - Lýðveldið Ísland



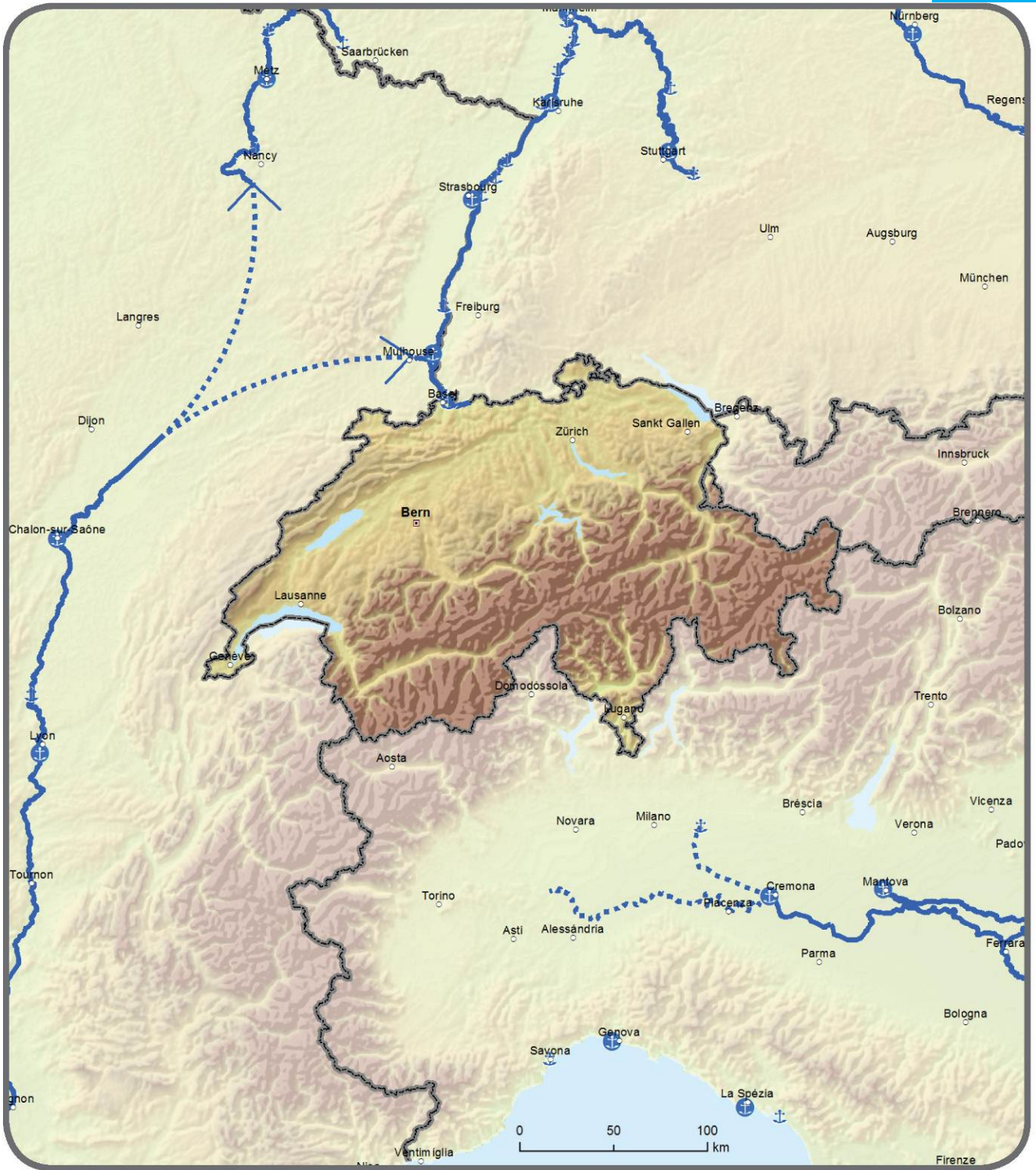


11.4. Indicative Extension to Neighbouring Countries
 Comprehensive & Core Network:
 Roads, ports, rail-road terminals and airports
Kongeriket Norge / Kongeriket Noreg - Lýðveldið Ísland





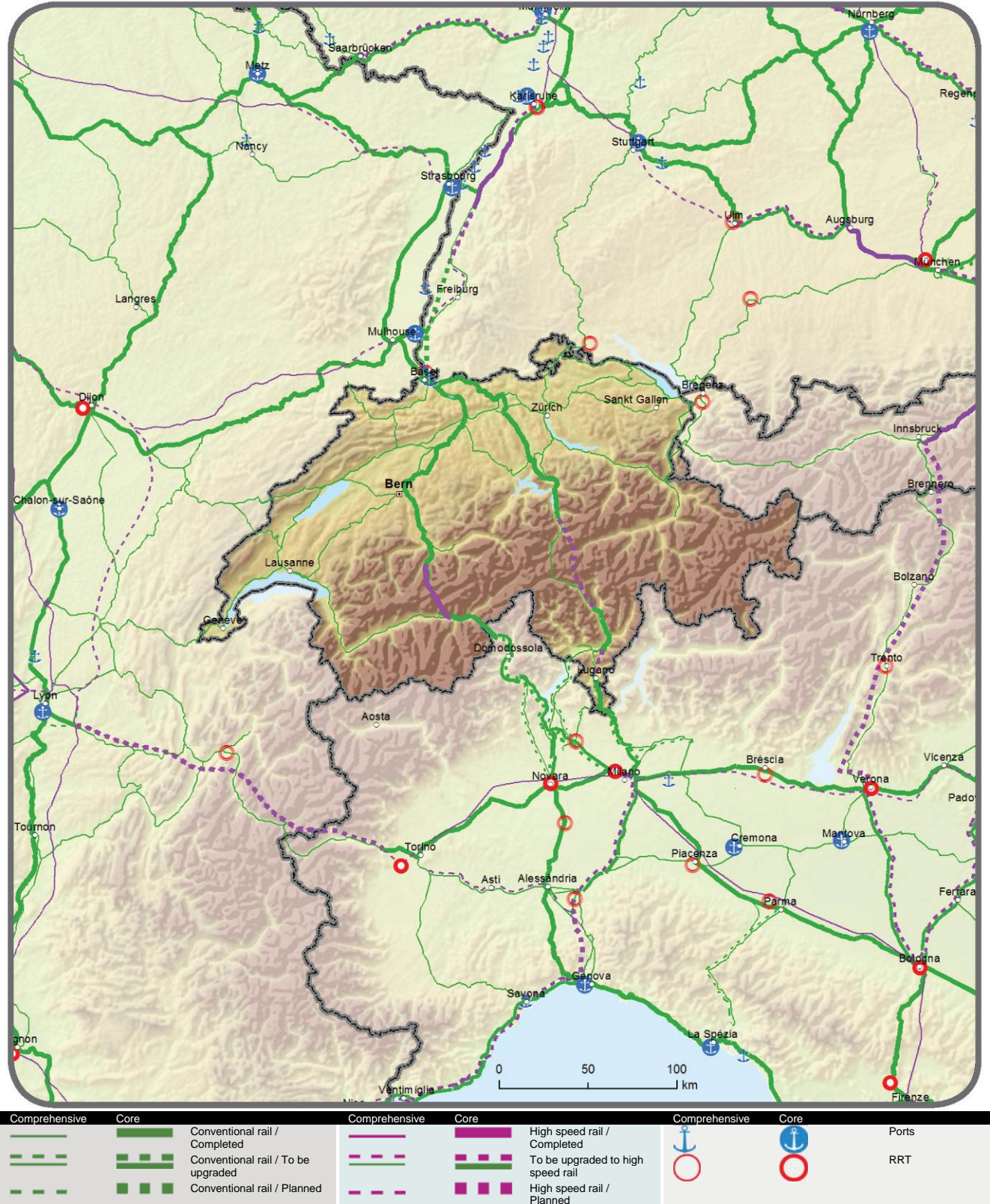
12.1. Indicative Extension to Neighbouring Countries
 Comprehensive & Core Networks: Inland waterways and ports
Schweiz / Suisse / Svizzera / Svizra - Liechtenstein



	Core Inland Waterways / Completed		Comprehensive		Core Ports
	Inland Waterways / To be upgraded				
	Inland Waterways / Planned				

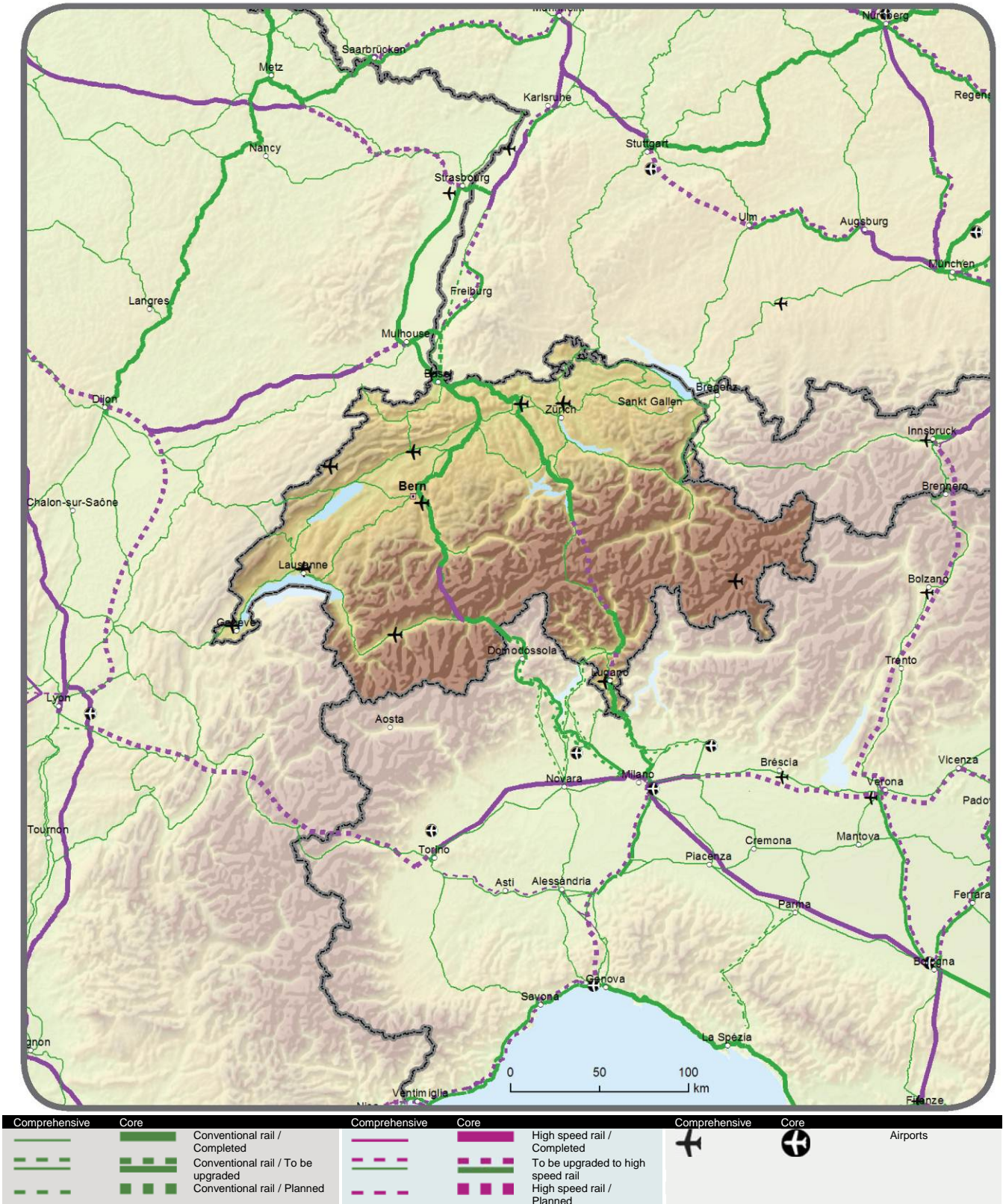


12.2. Indicative Extension to Neighbouring Countries
 Comprehensive Network: Railways, ports and rail-road terminals (RRT)
 Core Network: Railways (freight), ports and rail-road terminals (RRT)
Schweiz / Suisse / Svizzera / Svizra - Liechtenstein



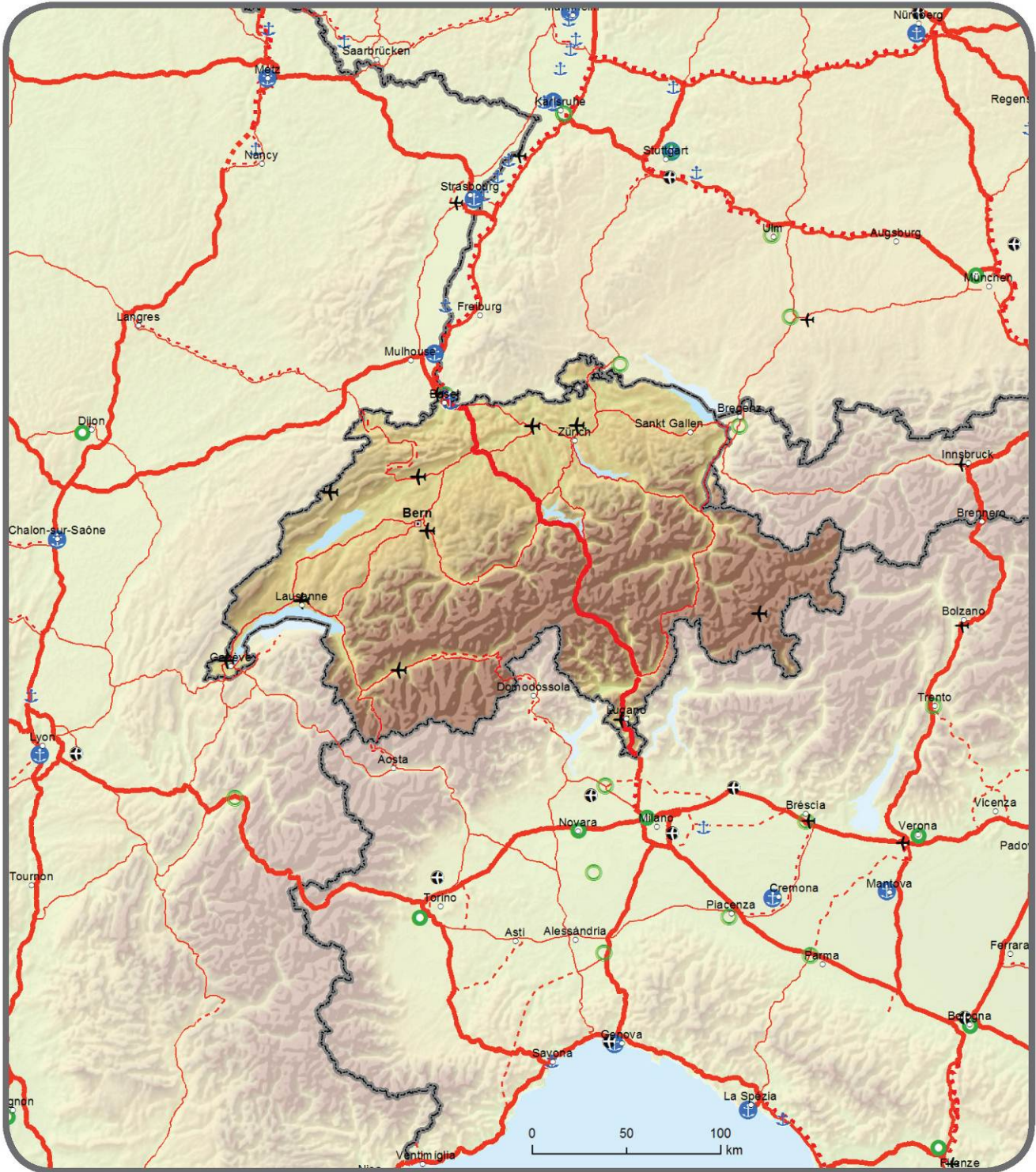


12.3. Indicative Extension to Neighbouring Countries
 Comprehensive Network: Railways and airports
 Core Network: Railways (passengers) and airports
Schweiz / Suisse / Svizzera / Svizra - Liechtenstein





12.4. Indicative Extension to Neighbouring Countries
 Comprehensive & Core Network:
 Roads, ports, rail-road terminals and airports
Schweiz / Suisse / Svizzera / Svizra - Liechtenstein



		Road / Completed			Ports			Airports
		Road / To be upgraded			RRT			
		Road / Planned						