



Council of the
European Union

Brussels, 25 July 2014
(OR. en)

12198/14
ADD 14

FSTR 40
FC 25
REGIO 84
SOC 576
FIN 512

COVER NOTE

From:	Secretary-General of the European Commission, signed by Mr Jordi AYET PUIGARNAU, Director
date of receipt:	23 July 2014
To:	Mr Uwe CORSEPIUS, Secretary-General of the Council of the European Union

No. Cion doc.:	SWD(2014) 242 final - PART 14/23
Subject:	COMMISSION STAFF WORKING DOCUMENT Accompanying the document COMMUNICATION FROM THE COMMISSION Sixth report on economic, social and territorial cohesion: Investing in Europe's Future

Delegations will find attached document SWD(2014) 242 final - PART 14/23.

Encl.: SWD(2014) 242 final - PART 14/23



Brussels, 23.7.2014
SWD(2014) 242 final

PART 14/23

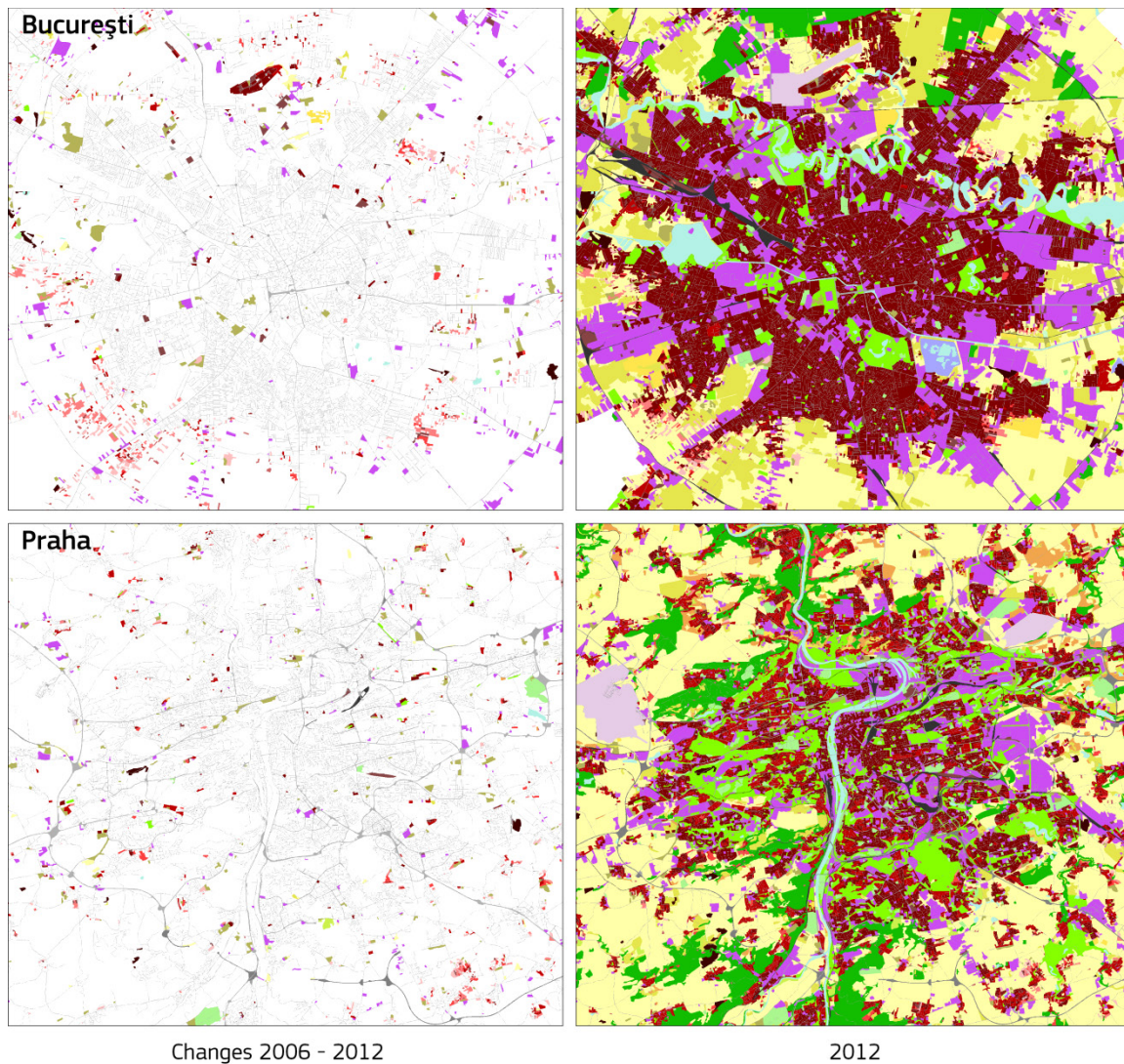
COMMISSION STAFF WORKING DOCUMENT
Accompanying the document

COMMUNICATION FROM THE COMMISSION

Sixth report on economic, social and territorial cohesion: Investing in Europe's Future

{COM(2014) 473 final}

Map 1 – Land use changes 2006-2012

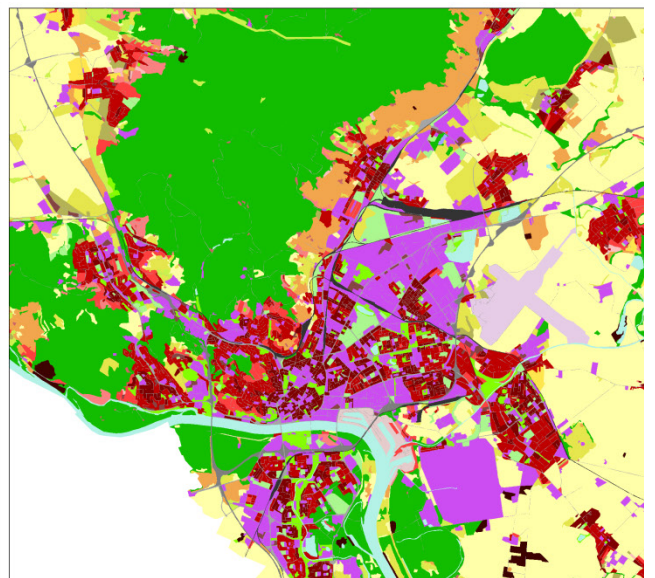
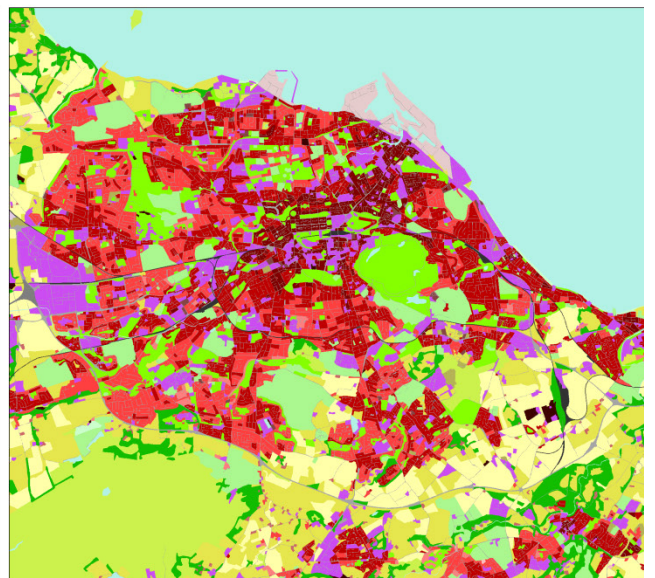
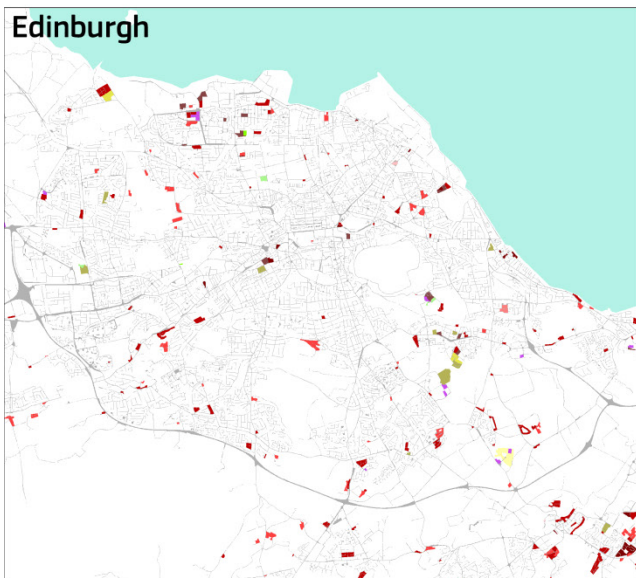
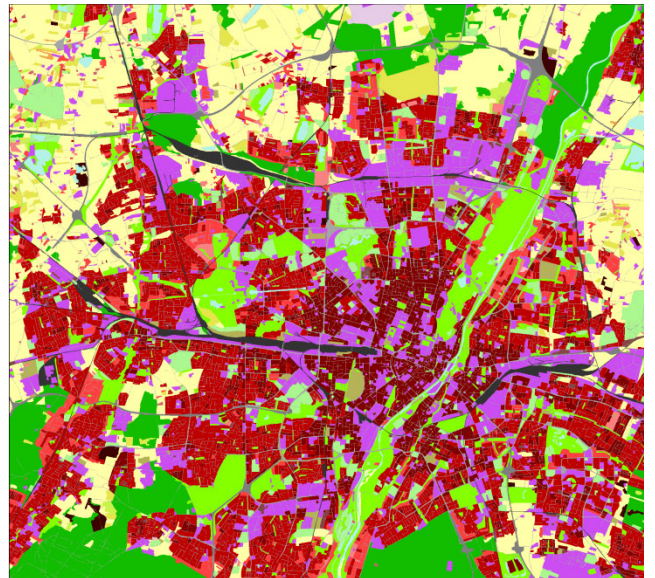
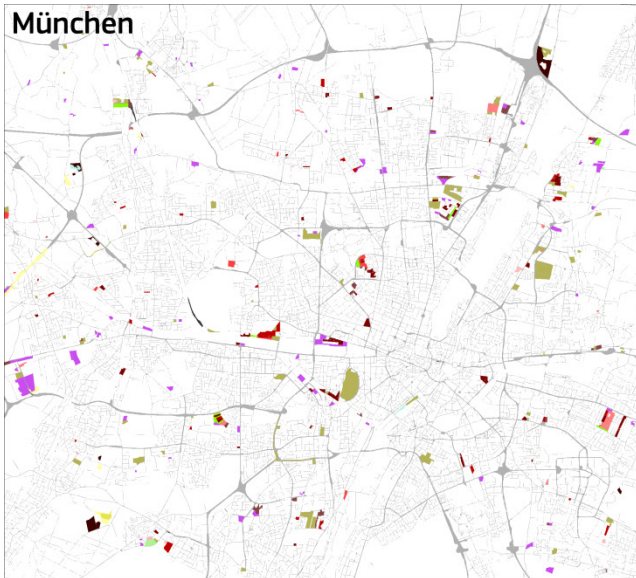


Land use changes 2006 - 2012

Land use class 2012

Continuous urban fabric	Railways and associated land	Permanent crops
Discontinuous dense urban fabric	Port areas	Pastures
Discontinuous medium density urban fabric	Airports	Complex and mixed cultivation patterns
Discontinuous low density urban fabric	Mineral extraction and dump sites	Forests
Discontinuous very low density urban fabric	Construction sites	Herbaceous vegetation associations
Isolated structures	Land without current use	Open spaces with little or no vegetations
Industrial, commercial, public, military and private units	Green urban areas	Wetlands
Fast transit roads and associated land	Sports and leisure facilities	Water bodies
Other roads and associated land	Arable land (annual crops)	

Source: Copernicus Urban Atlas



Changes 2006 - 2012

2012