



Council of the
European Union

Brussels, 11 May 2015
(OR. en)

8739/15
ADD 1

MAR 63
TRANS 160

COVER NOTE

From: Secretary-General of the European Commission,
signed by Mr Jordi AYET PUIGARNAU, Director

date of receipt: 11 May 2015

To: Mr Uwe CORSEPIUS, Secretary-General of the Council of the
European Union

No. Cion doc.: SWD(2015) 101 final

Subject: COMMISSION STAFF WORKING DOCUMENT Statistical Background
Material Accompanying the document Report from the Commission to
the European Parliament and the Council on the implementation of
Regulation (EC) 789/2004 on the transfer of cargo and passenger ships
between registers in the Community

Delegations will find attached document SWD(2015) 101 final.

Encl.: SWD(2015) 101 final



EUROPEAN
COMMISSION

Brussels, 8.5.2015
SWD(2015) 101 final

COMMISSION STAFF WORKING DOCUMENT

Statistical Background Material

Accompanying the document

Report

**from the Commission to the European Parliament and the Council on the
implementation of Regulation (EC) 789/2004 on the transfer of cargo and passenger
ships between registers in the Community**

{COM(2015) 195 final}

Table of contents

	Page
Summary	2
Annex 1: Individual ship transfers between EU Member State registers	5
Transfers in: - 2006	5
2007	9
2008	14
2009	19
2010	23
2011	28
2012	32
Transfers out: 2006	37
2007	42
2008	47
2009	51
2010	55
2011	59
2012	64
Annex 2: Cargo and passenger ships transfers between EU Member State registers	68
Graph 1: Deletions from Member State registers	69
Graph 2: Transfers to Member State registers	70
Graph 3: Changes per Member State register	71
Annex 3: Cargo ship transfers	72
Graph 4: Deletions from Member State registers	73
Graph 5: Transfers to Member State registers	74
Graph 6: Changes per Member State register	75
Graph 7: Transfers from Member State to third country registers	76
Annex 4: Passenger ship transfers	78
Graph 8: Deletions from Member State registers	79

Graph 9: Transfers to Member State registers	80
Graph 10: Changes per Member State register	81
Graph 11: transfers from Member State to third country registers	82
Annex 5: Top 10 EU registers	83
Graph 12: Top 10 receiving EU Member State flags per year	84
Table: tabular presentation of graph 12	85

Statistical Background Material

Accompanying the document

Report

from the Commission to the European Parliament and the Council on the implementation of Regulation (EC) 789/2004 on the transfer of cargo and passenger ships between registers in the Community.

SUMMARY

This staff working document provides the background data used for the associated Report on the implementation of Regulation (EC) 789/2004 on the transfer of cargo and passenger ships between EU flag State registers.

It contains several sections:

- Annex 1 sets out the information provided by those 20 EU Member States which replied to the Commission's request for information. In some cases, these replies simply confirmed that no such transfers had taken place, as in the case of Austria, the Czech Republic and Hungary, while the details forwarded by the other Member States are included in the extensive tables below.

Unfortunately no responses were received, and hence not included, from Bulgaria, Cyprus, Italy, Lithuania, the Netherlands, Poland, Slovakia and the United Kingdom. Hence a full picture of the intra-EU ship transfer activities between registers over this period cannot be established from this data. While action has been taken to encourage a fuller response rate, the report has in the interim been drawn up with those records available. In addition, it is noticeable that on records from one flag State, certain ships transferring out from one register are not always noted as transferring in in the return of the receiving flag State register.

- Annex 2 sets out three graphs drawn from the data provided by EU Member States. They highlight the movements between registers of both cargo and passenger ships over the 2006-2012 period and the net gains or losses of individual registers.
- Annexes 3 and 4 break down the overall statistics of Annex 2 into cargo and passenger ship transfers respectively. As Malta only provided a summary of ship transfers without a breakdown of individual ship types, its statistics could not be included in these graphs. In addition, using external data sources provided by EMSA¹, graphs are included for all EU Member States indicating separately the number of cargo and passenger ships transferred from each EU Member State register to third country registers for the period 2006-2012.
- Annex 5 using external data sources provided by EMSA the top 10 EU registers to which both ships transferred both from other EU registers as well as third country registers.

¹ EMSA database 'MARINFO' drawn from several external commercial sources

Table 1. Cargo and passenger ships transferred to an EU Member State register from another register within the Union**2006**

Member State	No.	Date of transfer	IMO no	Name	Ship type	Tonnage	Original register	Year of build	To register*
AT	-	-	-	-	-	-	-	-	-
BE	1	31/03/2006	9166625	VALENTINE	RO-RO cargo ship	23987	LUX	1999	BE
BE	2	20/06/2006	9136101	FAST JEF	General cargo ship	2066	NL	1996	BE
BE	3	7/08/2006	8213885	SMIT ORCA	Offshore support vessel	835	NL	1983	BE
CZ	1	18/12/2006	9064190	WESTERMUEHLEN	Container Ship	14 961 GT	DE	1993	After entry, CZ registration suspended; flying Liberia flag (bareboat)
DE	1	2006	8433459	NOORMAN	Tug	97	DK	1970	DE
	2	2006	9106479	DEJA BHUM	Container ship	10917	GIB	1995	DE
	3	2006	-	P 2	Pontoon ship	568	DK	1974	DE
	4	2006	9137818	EMSTOR	Container ship	4180	CY	1996	DE
	5	2006	7211440	ADLER	Passenger ship	1029	SE	1971	DE
	6	2006	9124392	NORDSEA	Container ship	16624	CY	1996	DE
	7	2006	9222390	LÖVÖN	Fishing vessel	457	SE	2000	DE
	8	2006	-	CARMONA	Fishing vessel	499	SE	2000	DE
	9	2006	7904918	MAJA	General Cargo ship	1624	GIB	1979	DE

	10	2006	9360582	TURM	Tug	497	MT	2005	DE
DK	1	27/2/2006	8502406	KING SEAWAYS	Passenger ship	31.788,00	FR	1987	DK IS
	2	10/10/2006	7726768	IHOLM II	Barge	5.071,00	FI	1978	DK AS
EE	1	10/4/2006	9198941	SUPERFAST VII	Passenger ship	30285	EL	2001	EE
	2	10/4/2006	91498953	SUPERFAST VIII	Passenger ship	30285	EL	2001	EE
	3	12/4/2006	9211509	SUPERFAST IX	Passenger ship	30441	EL	2002	EE
EL	1	14/11/2006	8822052	MAKEDONIA	Passenger ship	6309	MT	1989	EL
	2	08/06/2006	8116659	PANAGIOTIS T	M/V	1785	MT	1983	EL
ES	1	24/01/2006	9108829	CAP FORMENTOR	General cargo ship	3443,00	NL	1995	ES (Canary Is Register)
	2	06/04/2006	9107203	ALCANTARA DOS	Ro-ro passenger ship	4859,00	CY	1994	ES (Canary Is Register)
	3	12/04/2006	9141833	ALMUDAINA DOS	Ro-ro passenger ship	4662,00	IT	1996	ES (Canary Is Register)
	4	22/06/2006	9181091	ZURBARAN	Ro-ro passenger ship	22152,00	UK	1998	ES (Canary Is Register)
	5	21/08/2006	9181106	EL GRECO	Ro-ro passenger ship	22152,00	UK	1998	ES (Canary Is Register)
FI	1	10/01/2006	8215649	CHRISTA	General cargo ship	2795	DE	28/06/1982	FI M
	2	13/02/2006	8512126	CELIA	General cargo ship	851	NL	01/11/1985	FI H
	3	10/04/2006	8712582	EIVOR	Passenger ship	645	ISL	1988	FI H
	4	28/07/2006	9319442	FINNSTAR	Ro-ro passenger ship	45923	SE	15/01/2005	FI H
	5	08/08/2006	9319466	FINNMAID	Ro-ro passenger ship	45923	SE	04/04/2005	FI H

FR	1	2006	-	NAMUR	Bulk carrier	?	BE	2000	FR
	2	2006	-	PONT L'ABBE	Ro-ro passenger ship	?	DK	1978	FR
HR									
HU									
IE	1	20/2/2006	8215807	COASTAL WAVE	Cargo ship	2046	DE	1982	IE
LUX	1	11/07/2006	9327059	CRYSTAL DIAMOND	Chemical tanker ship	7903	BE	2006	LUX
	2	21/02/2006	9151917	MARINE RICKMERS	Container ship	11925	DE	1998	LUX
LV	1	19/1./2006	8415160	IRBE GAUJA	Dry cargo ship	3062	DE	1985	LV
	2	22/12/2006	8813972	KEGUMS	Dry cargo ship	3555	CY	1989	LV
	3	28/08/2006	7827225	REGINA BALTICA	Passenger ship	18345	CY	1980	LV
	4	04/12/2006	7411387	TOR NERINGA	Ro-ro ship	12494	LT	1975	LV
	5	09/10/2006	8819108	ZOJA II	Oil chemical tanker	18625	MT	1989	LV
LT									
MT²	94	2006	-	-	Cargo/passenger ships	-	See footnote		MT
PT	1	14/2/2006	8107737	ALEA TONY	Chemical Tanker	2593	SE	1982	PT
	2	05/04/2006	9261566	CESKA	LPG Carrier	2708	NL	2003	PT
	3	07/06/2006	9141663	HAFENTOR	General Cargo Ship	5025	CY	1996	PT

² BE (1)BG (1)CY (30)DK (2)EE (2)FI (1)FR (1)DE(25)EL (7) IE (1)IT (4)NL (3)NL.ANT (1) RO (3)SE(3)UK (2)

	4	06/04/2006	7825980	ILHA AZUL	Passenger/Ro-Ro Cargo Ship	5355	EL	1980	PT
	5	29/03/2006	5389798	LEVIATHAN	Passenger/Ro-Ro Cargo Ship	1502	DE	1963	PT
	6	05/04/2006	9261578	MADDY	LPG Carrier	2708	NL	2004	PT
SE	1	07/08/2006	9017769	FINNTRADER	Passenger ship, international traffic	33,313	FI	1905	SE
	2	17/03/2006		ABBE	Tug/salvage ship	69	UK	1977	SE
	3	10/03/2006	9171503	MAERSK CARLA	Chemical tanker, IBC	29,289	NK	1999	SE
	4	30/11/2006	9293272	GRANDE DETROIT	Ro-ro cargo ship	38,651	IT	2005	SE
	5	20/02/2006	9171498	BRO PREMIUM	Chemical tanker, IBC	29,289	NL	1999	SE
	6	11/12/2006	9312092	GRANDE SICILIA	Vehicle carrier	38,651	IT	2006	SE
	7	07/03/2006	8502286	DANA	Oil tanker	478	DK	1987	SE
	8	21/02/2006	9324796	SVITZER MERCUR	Tug/salvage ship	385	DK	2005	SE
	9	18/07/2006	9259496	MAGNOLIA SEAWAYS	Ro-ro cargo ship	32,289	DK	2003	SE
	10	24/05/2006		HILDA AF HINDERSÖN	Passenger ship	15	FI	1981	SE

2007

Member State	No.	Date of transfer	IMO no	Name	Ship type	Tonnage	Original register	Year of build	To register*
BE	1	2/02/2007	9085455	FAST SAM	General cargo ship	1983	NL	1994	BE
	2	28/02/2007	9183984	CELANDINE	Ro-ro cargo ship	23987	LUX	2000	Primary Register LUX/Bareboat Register

													BE
	3	16/03/2007	9360726	REYNAERT	Trailing suction hopper dredger	5005	LUX	2007	LUX	Primary Register LUX/Bareboat Register BE			
	4	25/04/2007	9136096	FAST SUS	General cargo ship	2055	NL	1996	NL	BE			
	5	7/05/2007	9347968	USL HAWK	Container ship	9948	DE	2006	DE	BE			
	9	3/07/2007	8415184	MARSCHENLAND	General cargo	1373	DE	1985	DE	BE			
	10	14/08/2007	9347970	EWL WEST INDIES	Container ship	9948	DE	2006	DE	BE			
	11	20/12/2007	9184029	VICTORINE	Ro-ro cargo ship	23987	LUX	2000	LUX	BE			
DE	1	2007	9182801	MAARTJE THEADORA	Fishing vessel	9082	NL	1999	NL	DE			
	2	2007	8807791	CHARLOTTE	Fishing vessel	324	NL	1988	NL	DE			
	3	2007	9224049	CANBERRA EXPRESS	Container ship	23652	UK	2000	UK	DE			
	4	2007	9224051	WELLINGTON EXPRESS	Container ship	23652	UK	2000	UK	DE			
	5	2007	8000226	THJELVAR	Ro-ro-passenger Ship	17053	SE	1980	SE	DE			
	6	2007	--	EMSWIND	Special Craft	76	FI	1983	FI	DE			
	7	2007	8020604	MERCHANT	Container ship	20594	UK	1983	UK	DE			
	8	2007	9072434	MOTTI	Ponton	5165	SE	1993	SE	DE			
	9	2007	--	SYLVESTER	Fishing Vessel	195	DK	1962	DK	DE			
	10	2007	9252929	FEHN MIRAGE	Container ship	2061	GIB	2002	GIB	DE			
	11	2007	9135731	FEHN HEAVEN	Container ship	2844	GIB	1995	GIB	DE			

	12	2007	9294159	ARIAKE	Container ship	28592	CY	2005	DE
	13	2007	9294185	PATRICIA SCHULTE	Container ship	28592	CY	2006	DE
	14	2007	9294173	TATIANA SCHULTE	Container ship	28592	CY	2005	DE
	15	2007	9020417	LISELOTTE ESSBERGER	Chemical Tanker	2634	PT	1992	DE
DK	1	4/01/2007	9302669	FREJA POLARIS	Oil-chemical tanker	23.244,00	LUX	2004	DIS
	2	26/02/2007	9107851	WIND	Cargo ship	1.501,00	BE	1996	DIS
	3	18/04/2007	9137753	THOR INGEBORG	Cargo ship	4.078,00	DE	1997	DIS
EE	1	03/01/2007	9194256	MERLIN	General ship	963	DE	1998	EE
EL	1	11/01/2007	7394747	EROTOKRITOS T	Passenger ship	24055	CY	1974	EL
	2	14/12/2007	9107887	MAERSK KAWASAKI	M/V	81488	DK	1997	EL
	3	14/12/2007	9308821	ZUMA	M/T	58418	MT	2005	EL
	4	05/03/2007	9297553	MONTEGO	M/T	57711	MT	2006	EL
	5	26/03/2007	8716007	KATERINA M	M/T	7973	SE	1989	EL
	6	27/03/2007	9036375	IPANEMA	M/T	39175	MT	1992	EL
	7	06/08/2007	9286138	GREAT LADY	M/T	160904	MT	2005	EL
	8	27/09/2007	9293002	PRIMO STEALTH	M/T	58418	MT	2005	EL
	9	07/11/2007	6724713	PEGASUS II	Tug	590	DE	1967	EL
	10	12/09/2007	9293002	POLYAIGOS	M/T	40038	CY	2005	EL
	11	05/09/2007	9306562	DHONOUSA	M/V	40038	CY	2005	EL
	12	16/11/2007	9354844	ALEXANDRA	M/V	43205	MT	2006	EL

	13	18/12/2007	9085522	MAERSK KURE	M/V	81488	DK	1996	EL
	14	28/03/2007	8002781	SITHENO	M/V	3720	IT	1981	EL
	15	25/05/2007	1003085	MAGNA GRECIA	Passenger ship	819	MT	1986	EL
	16	30/08/2007	9281853	ANTIKE ROS	M/V	40038	CY	2004	EL
	17	22/06/2007	6715372	THE CALYPSO	Passenger ship	11162	CY	1967	EL
	18	05/11/2007	9297319	BIRDIE	M/V	160904	MT	2005	EL
	19	14/09/2007	9286073	ADVENTURE	M/V	160904	MT	2005	EL
	20	24/08/2007	9319545	STROFADES	M/V	40038	CY	2006	EL
	21	16/11/2007	9354844	ALEXANDRA	M/V	43205	MT	2006	EL
	22	16/07/2007	8801321	AKTAIA OESARVI	M/V	1646	UK	1988	EL
	23	05/03/2007	9297541	BONITA	M/V	57711	MT	2006	EL
ES	1	09/01/2007	9125671	CEDEIRA	General cargo ship	2805.00	DE	1995	Reg. Esp. Canarias
	2	15/03/2007	9309198	BLAU DE FORMENTERA	General cargo ship	436.00	IT	2004	Reg. Esp. Canarias
	3	31/05/2007	9193044	ESPALMADOR JET	General cargo ship	735.00	IT	1998	Reg. Esp. Canarias
FI	1	03/01/2007	9007867	BALTIC EXCELLENT	General cargo	8407	NOR	15/07/1991	FIH
	2	16/01/2007	9334698	STENA POSEIDON	Oil tanker	42810	NOR	14/01/2006	FIH
	3	06/02/2007	9336268	FINNLADY	Ro-ro passenger	45923	SE	03/09/2005	FIH
	4	22/02/2007	9334703	PALVA	Oil tanker	42810	NOR	31/03/2006	FIH
	5	12/04/2007	8417235	FRIDA	General cargo	1587	UK	08/08/1984	FIH

	6	19/04/2007	8309921	ALHOLMEN	General cargo	2580	NL	15/12/1983	FIH
	7	26/04/2007	8806072	RIONA	General cargo	910	DE	30/06/1986	FIH
	8	25/10/2007	9195901	SWEGARD	General cargo	2997	NL	20/05/1998	FIH
	9	09/1./2007	9195834	FINGARD	General cargo	2997	NL	30/06/1998	FIH
	10	12/12/2007	9030230	CELINA	General cargo	1599	NL	21/04/1992	FIH
FR	1	04/06/2007		CASAMANCE	Cargo ship	716	DK (Faroe Islands)	1975	FR
LUX	1	03/05/2007	8988404	GUSTAVE PERREAU	Special craft	785	FR	1963	LUX
	2	24/04/2007	9339002	ANNA B	Special craft	2411	NL	2006	LUX
LV	1	29/06/2007	8609931	EST	Dry cargo ship	920	NL	1987	LV
	2	29/10/2007	890612	GERDA	Dry cargo ship	852	DK	1989	LV
	3	20/04/2007	7329522	VANA TALLINN	Passenger/ ro-ro ship	10002	CY	1974	LV
	4	01/06/2007	8012097	WEST LYNDA	Tanker	2092	MT	1981	LV
MT ³	98								MT
PT	1	22/08/07	8100519	AUTOCARRIER	Ro-Ro car carrier ship	6395	FR	1982	PT
	2	22/08/07	8200565	AUTOLINE	Ro-Ro car carrier ship	7087	FR	1983	PT
	3	20/03/07	9079200	AUTORACER	Ro-Ro car carrier ship	9693	SE	1994	PT
	4	23/08/07	9079212	AUTORUNNER	Ro-Ro car carrier	9693	SE	1994	PT

³ AT(1), BE(2), BG(1), CY (12), EE(1), FR (1), DE(51), EL(8), IT(17), LT(2), LUX(1), NL(7), NL (Antilles)(1), NOR (1), PT(2), RO (2), ES(Canary Islands)(2), SE(1), UK(9)

							ship					
5	28/06/07	9006344	GUIMARÃES		General cargo ship	2450	CY	1994				PT
6	16/02/07	9030486	LASS MARS		General cargo ship	1512	DE	1991				PT
7	01/03/07	9030474	LASS MOON		General cargo ship	1512	DE	1991				PT
8	21/02/07	9030515	LASS SATURN		General cargo ship	1513	DE	1992				PT
9	13/06/07	9030498	LASS URANUS		General cargo ship	1512	DE	1992				PT
10	29/08/07	8020044	LE CASTELLET		Ro-Ro car carrier ship	7930	FR	1982				PT
11	30/08/07	8006878	MONTLHERY		Ro-Ro car carrier ship	7930	FR	1982				PT
SE	14/06/2007		LAGNÖ		Road ferry	215	FI	1957				SE
2	11/01/2007		APHRODITE III		Passenger ship	51	NL	2007				SE
3	14/05/2007		ENTERPRISE IPS II		Service vessel	35	IT	2007				SE
4	20/04/2007	9371878	ASTRAL		Chemical tanker, IBC	7,636	MT	2006				SE
5	14/05/2007		PENTA 72		Service vessel	35	IT	2007				SE
6	07/08/2007		AVALON		Passenger ship	13	FR	1999				SE
7	20/07/2007		CONSTRUCTOR		Service vessel	58	SE	1986				SE
8	10/07/2007	8954879	WEST WIND		Ro-ro cargo ship	1,985	EL	1989				SE
9	09/11/2007	9212450	MR SHOPPY ONE		Passenger ship, international traffic	2,679	EL	2000				SE

10	20/11/2007	9130949	GRANDE AFRICA	Ro-ro cargo ship	56,642	IT	1998	SE
11	26/11/2007	9295103	SIMARA ACE	Passenger ship, international traffic	1,665	DK	2007	SE

2008

Member State	No.	Date of transfer	IMO no	Name	Ship type	Tonnage	Original register	Year of build	To register*
BE	1	9/01/2008	9102203	ELVERSELE	Gas tanker	23519	DE	1996	BE
	2	20/03/2008	8411229	MARIABURG	General cargo	1372	DE	1985	BE
	3	24/09/2008	8404446	FAST JULIA	General cargo	1391	NL	1985	BE
	4	18/12/2008	9209453	CATHERINE	RO-RO cargo ship	21287	LUX	2002	BE
DE	1	2008	9224714	NORDMOSEL	Tanker	40605	CY	2001	DE
	2	2008	9268710	SCAN BRASIL	Container ship	8831	Isle of Man	2003	DE
	3	2008	9105140	ISARSTERN	Chemical tanker	11426	Isle of Man	1995	DE
	4	2008	9369007	IRIS BOLTEN	Container ship	8273	CY	2008	DE
	5	2008	9237371	BERIT	Container ship	9981	UK	2001	DE
	6	2008	9321093	UAL EUROPE	Container ship	7767	Isle of Man	2006	DE
	7	2008	9186704	LEANDER			GIB		DE
	8	2008	9173446	HEIKE	Container ship	2988	UK	1998	DE
	9	2008	8903090	CEMSTAR	General Cargo ship	2625	GIB	1989	DE
	10	2008	9156395	WESERTOR	Container ship	4180	PT	1997	DE

	11	2008	9152789	ANDRE RICKMERS	Container ship	26131	LUX	1996	DE
	12	2008	9247132	EMSBROKER	Container ship	4183	PT	2001	DE
	13	2008	9255763	BELUGA SENSATION	Container ship	7660	GIB	2003	DE
	14	2008	9295892	VICTORIA	Fishing Vessel	499	IE	2004	DE
	15	2008	9183843	THEMSESTER N	Chemical Tanker	14400	Isle of Man	2000	DE
	16	2008	1212121	LA VALBELLE	Pilot boat	< 50	FR	1980	DE
	17	2008	9143398	BETSY S	Container ship	2988	UK	1998	DE
	18	2008	6609705	NOORMAN	Tug	115	NL	1965	DE
DK	1	22/01/2008	9350757	JUTLANDIA SWAN	Oil/chemical tanker	11.711,00	MT	2008	DIS
	2	7/02/2008	9137727	THOR GITTA	Cargo ship	4.078,00	DE	1996	DIS
	3	14/02/2008	7911002	KIVA	Dredger	781,00	NL	1980	DAS
	4	28/02/2008	9371787	SELANDIA SWAN	Oil/chemical tanker	11.711,00	MT	2007	DIS
	5	14/04/2008	8203531	DORIS K	Dredger	853,00	DE	1982	DAS
	6	3/06/2008	9326677	OW BALTIC	Oil/chemical tanker	2.143,00	DE	2005	DIS
	7	6/06/2008	9341419	OW SCANDINAVIA	Oil/chemical tanker	2.164,00	DE	2006	DIS
	8	27/11/2008	8012839	RIVER DART	Cargo ship	536,00	UK	1981	DAS
EE	1	11/03/2008	8519241	TRINE	Cargo Ship	3448	DE	2000	EE
	2	21/07/2008	9124433	KAROLIN	Passenger ship	636	DE	2000	EE

EL	1	26/08/2008	9125891	SPEEDRUNNER II	Passenger ship	3971	CY	1996	EL
	2	03/03/2008	9298507	MINERVA ANNA	M/T	30053	MT	2005	EL
	3	12/03/2008	9202716	DELTA MILLENNIUM	M/T	157093	CY	2000	EL
	4	08/04/2008	8806046	JET XVI	MЯ	1716	DK	1990	EL
	5	21/01/2008	9318008	MINERVA VASO	M/T	28960	MT	2006	EL
	6	26/02/2008	9307827	MINERVA VIRGO	M/T	28960	MT	2006	EL
	7	06/10/2008	9350719	SUPERFAST I	Passenger ship	25760	IT	2008	EL
	8	07/04/2008	8802791	TZET XVII	MЯ	1711	DK	1990	EL
	9	07/07/2008	7610826	AEGEAN XII	MЯ	2867	MT	1979	EL
	10	22/01/2008	9241607	SEA PRINCE	MЯ	8459B	MT	2002	EL
	11	24/06/2008	8901793	CHIOS DESTINY	M/V	25891	MT	1989	EL
	12	31/07/2008	7726940	EFSTRATIOS	M/V	2579	DE	1978	EL
	13	23/05/2008	9317951	MINERVA LIBRA	MЯ	67032	CY	2007	EL
	14	06/10/2008	8920347	ENDEVA	MЯ	21142	MT	1992	EL
	15	04/02/2008	9085560	MAERSK KOKURA	Container ship	81488	DK	1997	EL
	16	04/04/2008	8900G00	COSMOS TZET	Passenger ship	2276	UK	1990	EL
ES	1	24/04/2008		MATSU	Passenger cruise	235.00	IT	2006	ES
	2	14/05/2008		EL CYRANO	Passenger cruise	104.26	DE	1990	ES
FI	1	05/02/2008	9305556	STENA ARTICA	Oil tanker	65293	SE	2004	FI
	2	22/04/2008	9207883	FINNKRAFT	Ro-ro cargo ship	11530	UK	20/09/1999	FI
	3	29/04/2008	9207895	FINNHAWK	Ro-ro cargo ship	11530	UK	28/10/1999	FI

		27/06/2008	8406779	EEVA	General cargo ship	2932	GIB	01/08/1984	FI
FR	1	01/04/2008		SEAFRANCE MOLIERE (DIEPPE SEAWAYS)	Passenger ship		EL	2002	FR
LUX	1	18/12/2008	9116917	MAERSK CHRISTIANSBRO	Tanker	29141	FR	1996	LUX
	2	21/11/2008	7610024	LADY DEBBIE	Tugboat	369	UK	1978	LUX
	3	09/10/2008	7362859	MASSAI	Tugboat	276	FR (Martinique)	1974	LUX
	4	08/04/2008	8912388	MARFRET NIOLON	RoRo ship	7395	EL	1991	LUX
	5	29/02/2008	9141041	KIRSTEN	container ship	5522	DE	1996	LUX
	6	06/02/2008	8912376	MARIN	RoRo ship	5972	EL	1990	LUX
LV	1	21/01/2008	8801072	LIVA GRETA	Dry cargo ship	851	NL	1988	LV
	2	29/07/2008	8306498	SILJA FESTIVAL	Passenger/ ro-ro ship	34414	CY	1986	LV
MT⁴	101						See footnote		MT
PT	1	08/04/08	8017322	EVDXIA CARMELA	Container Ship	5371	MT	1982	PT
	2	18/12/08	8819718	FRYKEN	Oil tanker	3987	NL	1989	PT
	3	17/12/08							
	4	18/12/08	8819720	SAXEN	Oil tanker	3987	NL	1989	PT
			8819732	VISTEN	Oil tanker	3987	NL	1989	PT

⁴ BG(1), CYS(12), DK(9), FR (1), DE(42), EL(3), IT(9), LT(2), LUX (2), NL, Antilles(3), NOR(4), ES(4), UK(8), GIB(1),

SE	1	22/04/2008		FODOR	Service vessel	22	FI	1981	SE
	2	01/02/2008	9295490	SILUNA ACE	Passenger ship, international traffic	1,665	DK	2007	SE
	3	14/03/2008		SUPPLIER	Service vessel	15	UK	2006	SE
	4	08/04/2008	9212644	FINNPULP	Ro-ro cargo ship	25,732	UNITED KINGDOM	2002	SE
	5	15/04/2008	9212656	FINNMILL	Ro-ro cargo ship	25,732	UK	2002	SE
	6	22/04/2008	9375654	VIKING XPRS	Passenger ship, international traffic	35,918	SE	2008	SE
	7	20/05/2008	7901265	ROSELLA	Passenger ship, international traffic	16,879	FI	1980	SE
	8	28/07/2008	9227900	GRAND BENELUX	Vehicle carrier ship	37,712	IT	2001	SE
	9	14/07/2008	9130951	GRANDE ATLANTICO	Ro-ro cargo ship	56,642	IT	1999	SE
	10	21/07/2008	9333694	GALAXY	Passenger ship, international traffic	48,915	EE	2006	Sweden
	11	25/09/2008		QROOZ 01	Passenger ship	82	NL	2007	SE

2009

Member State	No.	Date of transfer	IMO no	Name	Ship type	Tonnage	Original register	Year of build	To register*
BE	1	8/01/2009	9177806	EUPEN	Gas tanker	23952	DE	1999	BE
DE	1	2009	8509856	ELBIA	General Cargo	1525	CY	1985	DE

							ship						
2	2009	9398773	DELTA HAMBURG	Container ship	10585	CY	2008	DE					
3	2009	8707446	JAN MARIA	Fishing Vessel	7646	LT	1988	DE					
4	2009	9165815	GLADIOLUS	General Cargo ship	15670	MT	1998	DE					
5	2009	9209324	DAFFODIL	Container ship	36014	MT	2000	DE					
6	2009	9165803	EIGHT OCEAN	Container ship	15670	MT	1998	DE					
7	2009	9209348	DANDLE	Container ship	36014	MT	2000	DE					
8	2009	9165786	GABION	General Cargo ship	15670	MT	1998	DE					
9	2009	9165798	GALAX	General Cargo ship	15670	MT	1998	DE					
10	2009	8028412	ANNIE HILLINA	Fishing Vessel	2417	NL	1981	DE					
DK 1	20/04/2009	9488413	NORDIC ANNE	Oil tanker	42.010,00	NL	2008	DIS					
2	29/04/2009	7715434	SIA	Cargo ship	2.525,00	UK	1978	DIS					
3	2/07/2009	7343633	VALDEMAR M	Supply ship	1.146,00	UK	1972	DIS					
4	12/10/2009	9121699	TERNLAND	Oil/Chemical tanker	6.534,00	SE	1996	DIS					
5	28/10/2009	9232955	TERNHAV	Oil/Chemical tanker	9.980,00	SE	2002	DIS					
6	6/11/2009	9300829	TERNHOLM	Prod./Oil/Chemical tanker	9.993,00	SE	2005	DIS					
7	24/11/2009	9221267	TERNVIK	Prod./Oil/Chemical tanker	9.980,00	SE	2001	DIS					
8	1/12/2009	9277371	TERNVAG	Prod./Oil/Chemical tanker	9.993,00	SE	2003	DIS					

EL	1	05/11/2009	9429053	SEA MOON	M/V	32957	MT	2009	EL
	2	21/05/2009	9141883	SPEEDRUNNER IV	Passenger ship	4697	IT	1998	EL
	3	20/05/2009	8820121	ECO 5	M/T	2041	BG	1990	EL
	4	02/10/2009	9458511	SUPERFAST II	Passenger ship	25760	IT	2009	EL
	5	26/10/2009	9291779	AGIOS NIKOLAS	M/V	39818	DE	2004	EL
	6	03/06/2009	9141871	SPEEDRUNNER III	Passenger ship	4897	IT	1998	EL
	7	29/04/2009	8813130	ECO III	MЯ	2041	BG	1989	EL
	8	12/05/2009	8813142	ECO IV	MЯ	2041	BG	1989	EL
	9	01/10/2009	9123374	ALPHA FRIENDSHIP	M/V	81140	MT	1996	EL
ES	1	17/03/2009	9059171	BENCHI EXPRESS	Passenger ship	490.00	IT	1991	ES (Canary Islands)
	2	22/04/2009		ELENA NUEVE	Passenger ship	290.00	IT	2007	ES (Canary Islands)
FI	1	27/03/2009	8618035	NINA	General cargo ship	2006	GIB	15/05/1986	FIH
FR	1	19/03/2009		TBN JEAN NICOLI	Passenger ship	5,150	EL	1998	FR
LUX	1	08/10/2009	9395525	MALLECO	Bulk/container ship	75752	DE	2009	LUX
	2	26/03/2009	9268629	SEVEN PETREL	Survey and support ship	3371	NOR	2002	LUX
	3	23/03/2009	9372274	THETIS	Container ship	17488	DE	2009	LUX
	4	12/03/2009	9310393	ST PAULINE	Tanker	4077	FR (RIF)	2005	LUX
LV	1	06/05/2009	9237589	ROMANTIKA	Passenger/ ro-ro ship	40803	CY	2002	LV

	2	05/02/2009	7004342	SKORPION	Oil tanker	1660	EE	1970	LV
MT ⁵	98						See footnote		MT
PT	1	25/03/09	9491824	SIRENA	Cargo Vessel (Landing Craft)	797	FR	2006	PT
SE	1	14/01/2009	9398486	WISBY WAVE	Chemical tanker, IBC	4,283	NL	2008	SE
	2	02/01/2009	7633155	ECKERÖ	Passenger ship, international traffic	12,358	FI	1979	SE
	3	03/02/2009	9362152	RAMIRA	Chemical tanker, IBC	12,164	MT	2008	SE
	4	03/06/2009	9273727	BIRKA STOCKHOLM	Passenger ship, international traffic	34,924	FI	2004	SE
	5	26/06/2009		SYLÖRA	Passenger ship	12	SE	1982	SE
	6	05/10/2009	6505686	HALLSTA	Tug/salvage ship	189	FI	1964	SE
	7	18/11/2009		GLORIA	Passenger ship	15	UK	unknown	SE
	8	07/12/2009	9504413	NÄMDÖ	Passenger ship	364	FI	2009	SE
	9	29/12/2009		ASKHOLMEN	Service vessel	62	FI	2009	SE

2010

Member State	No.	Date of transfer	IMO no	Name	Ship type	Tonnage	Original register	Year of build	To register*
BE	1	7/05/2010	9229025	BELISAIRE	Chemical/Oil	7093	FR	2001	BE

⁵ BE (2), BG(6), HR (2), CY (27), DK(3), FI (2), FR (1), DE(27), GR (9), IT (9), LUX (1), NL, Antilles(1), NOR (1), PL (1), PT(2), RO (1), ES(2), UK(1)

							product tanker							
	2	7/05/2010	9196656	CHASSIRON			Chemical/Oil product tanker	5547	FR	2000			BE	
	3	5/07/2010	9221803	ST MAUD			Chemical/Oil product tanker	6519	FR	2001			BE	
	4	5/08/2010	9231602	ST VANESSA			Chemical/Oil product tanker	11118	LUX	2001			BE	
	5	18/08/2010	9247601	SV. APOSTOL ANDREY			General cargo ship	4974	MT	2001			Primary Register MT/Bareboat RegisterBE	
	6	26/10/2010	9247637	SV. GEORGIY POBEDONOSETS			General cargo ship	4974	MT	2003			Primary Register MT/Bareboat RegisterBE	
	7	29/11/2010	9247625	SVYATITEL ALEKSIY			General cargo ship	4974	MT	2003			Primary Register MT/Bareboat RegisterBE	
	8	10/12/2010	9345714	RUSICH-6			General cargo ship	4970	MT	2005			Primary Register MT/Bareboat RegisterBE	
	9	16/12/2010	9262259	ST THAIS			Chemical/Oil product tanker	11118	FR	2003			BE	
DE	1	2010	9202259	WERDER BREMEN			Container ship	6378	GIB	1999			DE	
	2	2010	9277278	SIDER MONTEDIPRO CIDA			Container ship	3289	MT	2003			DE	
	3	2010	9349679	DECRETIVE			Container ship	75395	MT	2008			DE	
	4	2010	9328900	SAHAND			Container ship	54851	MT	2008			DE	
	5	2010	9010151	TRANSRUSSI A			Passenger ship	32534	IT	1994			DE	
	6	2010	9346524	SABALAN			Container ship	54851	MT	2008			DE	
	7	2010	9346536	TUCHAL			Container ship	54851	MT	2008			DE	
	8	2010	9395575	INES BOLTEN			Container ship	8273	CY	2009			DE	

						123	DK	1962	DE
9	2010	5346473	CAP STEVENS	Tug					
10	2010	9202259	WERDER BREMEN	Container ship	6378	GIB	1999		DE
11	2010	7403158	LUBECA	Supply Vessel	625	UK	1974		DE
12	2010	7016474	FAIR LADY	Passenger Ship	935	PL	1970		DE
DK	1	7921007	BLUE ALFA	Cargo ship	1.887,00	IT	1981		DIS
2	21/04/2010	9310355	OLYMPUS	Prod./Oil/Chemical tanker	7.515,00	SE	2006		DIS
3	23/04/2010	9232840	MARINUS	Prod./Oil/Chemical tanker	4.823,00	SE	2003		DIS
4	29/04/2010	9321615	TELLUS	Prod./Oil/Chemical tanker	7.515,00	SE	2006		DIS
5	3/05/2010	9299446	MAERSK BELFAST	Oil/Chemical tanker	19.758,00	UK	2005		DIS
6	3/05/2010	9236987	MAERSK ROSYTH	Oil/Chemical tanker	22.184,00	UK	2003		DIS
7	17/05/2010	9318228	SCORPIUS	Prod./Oil/Chemical tanker	7.636,00	SE	2006		DIS
8	21/05/2010	9340594	MAERSK BEAUFORT	Oil/Chemical tanker	19.758,00	UK	2004		DIS
9	27/05/2010	9310317	LEXUS	Prod./Oil/Chemical tanker	2.947,00	SE	2005		DIS
10	31/05/2010	9297137	LOTUS	Prod./Oil/Chemical tanker	2.956,00	SE	2004		DIS
11	4/06/2010	9299458	MAERSK BARRY	Oil/Chemical tanker	19.758,00	UK	2005		DIS
12	4/08/2010		SIMMAR SUN	Barge	2.515,00	IT	2010		DIS

	13	29/09/2010	9356127	MAERSK NEWPORT	Container ship	25.888,00	UK	2008	DIS
	14	5/10/2010	9299434	MAERSK BRISTOL	Oil/Chemical tanker	19.758,00	UK	2005	DIS
	15	20/10/2010	9356139	MAERSK NORFOLK	Container ship	25.888,00	UK	2008	DIS
	16	30/11/2010	9150614	BRO ANTON	Oil/Chemical tanker	11.375,00	SE	1999	DIS
	17	9/12/2010	9352004	MAERSK STEPNIKA	Container ship	92.293,00	NL	2008	DIS
	18	9/12/2010	9352016	MAERSK SALALAH	Container ship	92.293,00	NL	2008	DIS
	19	9/12/2010	9352028	MAERSK SAVANNAH	Container ship	91.427,00	NL	2008	DIS
	20	15/12/2010	9160932	BRO ATLAND	Oil/Chemical tanker	11.377,00	SE	1999	DIS
	21	15/12/2010	9171498	CAMILLA MÆRSK	Oil/Chemical tanker	29.289,00	SE	1999	DIS
	22	30/12/2010	9313101	BRO DESIGNER	Oil/Chemical tanker	11.344,00	SE	2006	DIS
EL	1	07/06/2010	9272943	PANSTELLAR	M/V	39727	IT	2003	EL
	2	11/05/2010	9221346	HIGHSPEED 6	Passenger ship	6360	ES	2000	EL
	3	29/04/2010	9235907	OMA CGM	M/V	73157	UK	2001	EL
	4	12/10/2010	9160190	KIMOLOS	M/T	156505	BE	1998	EL
	5	25/11/2010	9254551	ANASSAIOANNA	M/V	30000	MT	2002	EL
	6	12/02/2010	9487809	ONEIRO	Passenger ship	564	MT	2008	EL
	7	25/08/2010	8901016	PARNASSOS II	M/V	3972	MT	1992	EL
ES	1	26/04/2010		BELLISSIMO	Passenger ship	190.00	FR	2002	ES (Canary Islands)
	2	04/06/2010		RUBY	Passenger ship	209.00	IT	2002	ES (Canary Islands)

	3	06/09/2010	9551399	MONTE ANAGA	Oil/Chemical tanker	2651.00	PT	2008	ES (Canary Islands)
	4	18/10/2010	9147887	BRENS	Multipurpose ship	5381.00	DE	1996	ES (Canary Islands)
FR	1	22/03/2010		NGV LIAMONE II	Passenger ship	500	CY	1999	FR
LUX	1	24/11/2010	9262778	FILIPPO BRUNELLESCHI	Trailing suction hopper dredger	13001	ES	2003	LUX
	2	28/10/2010	8767276	VAGANT	Self elevating unit	1297	BE	2002	LUX
	3	15/06/2010	9328625	ARX	Bulk/container ship	6901	BE	2004	LUX
	4	01/06/2010	8702109	SYLT	Special craft	146	BE	1988	LUX
	5	19/01/2010	9480772	BOURBON ENTERPRISE	Supply vessel	3052	FR (RIF)	2009	LUX
LV	1	23/08/2010	8743969	JOLINE	Ro-Ro ship	642	LT	1988	LV
	2	19/10/2010	7528570	TRANSFER	Passenger/ro-ro ship	21162	UK	1977	LV
MT ⁶	125						See footnote		MT
PT	1	05/10/10	9572757	HARBOUR PIONEER	Chemical Tanker	13239	DE	2010	PT
	2	31/05/10	9247132	NORBRIS	General Cargo Ship	4183	NL	2002	PT
	3	16/04/10	9348625	VERONICA B	Container Ship	14016	ES	2006	PT
SE	1	13/07/2010		JMS MEERCAT	Service vessel	31	UK	2010	SE
	2	03/03/2010	9313967	MAERSK BEAUMONT	Container ship	48.853	UK	2007	SE

⁶ BE (2), CY (11), DK(2), FI (1), FR (1), DE(57), EL(10), IT (10), NL(3), NOR (17), ES(4), UK(5), GIB (1)

3	03/03/2010	9313955	MAERSK BROWNSVILLE	Container ship	48,853	UK	2007	SE
4	03/03/2010	9313943	MAERSK BUFFALO	Container ship	48,853	UK	2007	SE
5	30/09/2010		GÖTE II	Service vessel	19	FI	2010	SE
6	07/04/2010		ROZZO	Passenger ship	37	UK	1996	SE
7	18/08/2010	9145176	STENA GERMANICA	Passenger ship, international traffic	51,837	NL	2001	SE
8	15/04/2010		LIBELLE STOCKHOLM	Passenger ship	109	DE	1930	SE
9	17/09/2010	8000226	THJELVAR	Passenger ship, international traffic	17,053	DE	1980	SE
10	22/09/2010		AMIGO AF MALMÖ	Passenger ship	41	DK	1942	SE
11	24/11/2010	9131589	LISTERHAV	General cargo ship	3,323	NL	1996	SE
12	22/11/2010		FRIGG	Service vessel	15	DK	1983	SE

2011

Member State	No.	Date of transfer	IMO no	Name	Ship type	Tonnage	Original register	Year of build	To register*
BE	1	1/04/2011	9368209	RUSICH-8	General cargo Ship	4970	MT	2007	Primary Register MT/Bareboat RegisterBE
	2	19/04/2011	9247613	SV. KNYAZ VLADIMIR	General cargo ship	4974	MT	2003	Primary Register MT/Bareboat RegisterBE
	3	6/05/2011	9549607	AMETHYST	General cargo ship	3505	MT	2011	Primary Register MT/Bareboat Register BE

	4	6/05/2011	9524932	CONSTRUCTOR	Offshore support vessel	3578	NL	2010	Primary Register NL/Bareboat Register BE
	5	30/06/2011	9549619	AGATE	General cargo ship	3505	MT	2011	Primary Register MT/Bareboat Register BE
	6	6/09/2011	9014420	TIELRODE	Gas tanker	22521	NOR	1993	BE
	7	20/09/2011	9014432	TEMSE	Gas tanker	22521	NOR	1994	BE
	8	21/09/2011	9237747	BASTOGNE	Gas tanker	22902	NOR	2002	BE
	9	17/10/2011	9549621	BIRYUZA	General cargo ship	3505	MT	2011	Primary Register MT/Bareboat Register BE
	10	2/12/2011	9549633	LAZURITE	General cargo ship	3505	MT	2011	Primary Register Mt/Bareboat Register Be
DE	1	2011	--	SOPHIE	Barge	155	NL	2002	DE
	2	2011	--	HELENE	Barge	155	NL	2002	DE
	3	2011	9364497	SEEPONTON 1	Pontoon	2469	DK	2005	DE
	4	2011	9337250	ITAL ORDINE	Container ship	27779	GIB	2006	DE
DK	1	24/01/2011	9235555	MAERSK GIRONDE	Container ship	50.757,00	FR	2002	DIS
	2	10/02/2011	9313113	BRO DISTRIBUTOR	Oil/Chemical tanker	11.344,00	SE	2006	DIS
	3	10/02/2011	9171503	CARLA MÆRSK	Oil/Chemical tanker	29.289,00	SE	1999	DIS
	4	10/02/2011	9313096	BRO DELIVERER	Oil/Chemical tanker	11.344,00	SE	2006	DIS
	5	10/02/2011	9186649	ANGLIA SEAWAYS	Ro-RoCargo ship	13.073,00	IE	2000	DIS
	6	21/02/2011	8767264	SEA JACK	Barge	6.558,00	NL	2002	DIS
	7	8/03/2011	9313125	BRO DEVELOPER	Oil/Chemical	11.344,00	SE	2007	DIS

	26	20/12/2011	8112665	BLUE BETA	Cargo ship	2.099,00	UK	1983	DIS
EL	1	10/06/2011	9088108	BLUE CRYSTAL	M/T	2283	CY	1994	EL
	2	24/03/2011	9210086	SELINA STAR	M/V	37113	DE	2001	EL
	3	10/05/2011	9212450	AQU ASPIRIT	Passenger ship	1236	SE	2010	EL
	4	11/11/2011	7709437	PSARA GLORY	Passenger ship	1813	DK	1980	EL
	5	02/12/2011	9405772	SABATIKI	MЯ	12089	MT	2008	EL
	6	18/04/2011	9531430	SOUDA	MЯ	2340	MT	2010	EL
ES	1	14/07/2011	8911372	MAVERICK	Transport hydro reactor	442.00	IT	1989	ES (Canary Islands)
	2	14/07/2011	8921937	MAVERICK DOS	Transport hydro reactor	442.00	IT	1990	ES (Canary Islands)
	3	18/08/2011	8000226	BETANCURIA	Cargo ship	17053,00	SE	1980	ES (Canary Islands)
	4	04/11/2011	7802756	BENZU	Cargo ship	5197,00	FI	1979	ES (Canary Islands)
	5	28/11/2011	9447689	AIRES DE FORMENTERA	Passenger ship	239,00	FR	2007	ES (Canary Islands)
FI	1	10/03/2011	7393640	ÖSTERN	Ro-ro passenger (domestic) ship	474	NOR	1973	FIH
	2	10/03/2011	9468889	FINNBREEZE	Ro-ro cargo ship	28002	LUX	01/12/2008	FIH
	3	31/03/2011	9468891	FINNSEA	Ro-ro cargo ship	28002	LUX	01/12/2008	FIH
	4	04/05/2011	9443554	BORE SEA	Ro-ro cargo ship	25586	NL	08/11/2010	FIH
	5	26/07/2011	9443566	BORE SONG	Ro-ro cargo ship	25586	NL	20/12/2010	FIH
	6	17/08/2011	9195810	ANTONIA	General cargo ship	2876	DK	30/06/1998	FIH
	7	19/12/2011	8411621	MIRVA	General cargo	3951	GIB	24/08/1984	FIH

						ship														
FR	1	15/04/2011				NORMAN SPIRIT	Passenger ship	3832	UK	1992										FR
	2	22/12/2011				ASTERION	Bulk carrier ship	37,000	LUX	2011										FR
	3	30/08/2011				PIANA	Passenger ship	9,400	HR	2011										FR
LUX	1	27/05/2011	9280201			FRANCESCO DI GIORGIO	hopper dredger	4683	ES(Tenerife)	2003										LUX
	2	27/01/2011	9280213			TACCOLA	hopper dredger	4683	ES	2003										LUX
LV	1	02/09/2011	9115913			IDANNUS	Dry cargo ship	2050	DE	1995										LV
MT ⁷	71								See footnote											
PT	1	20/06/2011	8818805			BERCEO	LPG Tanker	4691	ES	1991										PT
SE	1	12/01/2011	9364538			SOUND PROVIDER	Service vessel	239	UK	2005										SE
	2	17/03/2011				DESSI	Passenger ship	105	DK	2006										SE
	3	11/04/2011	9235517			STENA SCANDINAVICA	Passenger ship, international traffic	57,958	UK	2003										SE
	4	17/08/2011				SEA DREAM	General cargo ship	73	UK	1995										SE

2012

Member State	No.	Date of transfer	IMO no	Name	Ship type	Tonnage	Original register	Year of build	To register*
BE	1	8/02/2012	9549645	MALACHITE	General cargo ship	3505	MT	2012	Primary Register MT/Bareboat RegisterBE

⁷ BE (1), BG(1), HR(2), CY (7), Faroe islands(1), FI (2), DE(24), EL3, IT(6), NL(7), PL(2), PT(1), ES(10), UK(2), GIB (2)

	2	16/04/2012	9549657	NEPHRITE	General cargo ship	3505	MT	2012	Primary Register MT/Bareboat RegisterBE
	3	11/05/2012	9539872	AMBIORIX	Dredger	7973	LUX	2012	Primary Register LUX/Bareboat Register BE
	4	2/07/2012	9555321	ONIKS	General cargo ship	3505	MT	2012	Primary Register MT/Bareboat RegisterBE
	5	3/09/2012	9555333	SERDOLIK	General cargo ship	3505	MT	2012	Primary Register MT/Bareboat RegisterBE
	6	24/10/2012	9242766	UNION PRINCESS	Tug	2258	BS	2002	Primary Register BS/Bareboat Register BE
	7	29/10/2012	9555345	CHAROITE	General cargo ship	3505	MT	2012	Primary Register MT/Bareboat RegisterBE
DE	1	2012	9418975	SINGAPORE	General Cargo ship	15377	GIB	2010	DE
	2	2012	9587855	BERLIN	Passenger Ship	25527	DK	2010	DE
	3	2012	7803190	PRINS JOACHIM	Passenger Ship	16071	DK	1980	DE
	4	2012	8616245	TWISTER	Tug	173	PL	1987	DE
	5	2012	--	KAI	Ponton	208	NL	1997	DE
	6	2012	--	WIND TENDER	Small commercial boat	12	NL	1991	DE
DK	1	12/01/2012	9475791	BRAGE VIKING	Cargo ship	6.279,00	ES	2011	DIS
	2	9/03/2012		OXANA	Tanker	1.702,00	DE	2004	DIS
	3	8/05/2012	9377183	NAUTILUS	Prod./Oil/chemical 1 tanker	4.874,00	MT	2006	DIS
	4	15/05/2012	9371725	ENDELO SWAN	Prod./Oil/chemical 1 tanker	3.219,00	MT	2007	DIS

	5	26/06/2012	8521531	SHELF EXPRESS	Cargo ship	1.423,00	NL	1986	DIS
	6	25/07/2012	9262089	BEGONIA SEAWAYS	Ro-Ro Cargo ship	37.722,00	SE	2004	DIS
	7	2/08/2012	9594042	ESVAGT AURORA	Supply ship	4.462,00	ES	2012	DIS
	8	3/08/2012	9274848	FREESIA SEAWAYS	Ro-Ro cargo ship	37.722,00	SE	2004	DIS
	9	5/09/2012	9259496	MAGNOLIA SEAWAYS	Ro-Ro cargo ship	32.523,00	SE	2003	DIS
	10	7/09/2012	9163702	AMALIE	Cargo ship	1.613,00	DE	1997	DIS
	11	4/10/2012	9157284	SELANDIA SEAWAYS	Ro-Ro cargo ship	24.196,00	SE	1998	DIS
	12	5/11/2012	9199646	VIDAR VIKING	Supply ship	3.382,00	SE	2001	DIS
EE	1	11/01/2012	8008498	FLAGMAN 1	Cargo Ship	1891	NOR	1982	EE
EL	1	02/04/2012	9305855	MINERVA GRACE	M/T	25167	MT	2005	EL
	2	26/11/2012	9167148	RIZOPON	M/T	22181	DE	1999	EL
	3	12/03/2012	8917170	IRENE	M/T	2544	LUX	1990	EL
	4	07/05/2012	8611532	DORIEUS	Passenger ship	918	CY	1988	EL
ES	1	20/03/2012	8208763	DANIYA	Cargo ship	15229,00	UK	1983	ES (Canary Islands)
	2	31/07/2012	9240201	PETROPORT	Tanker	6074,00	LUX	2001	ES (Canary Islands)
	3	03/12/2012	7717286	POSIDONIA	Cargo ship	2819,00	IT	1979	ES (Canary Islands)
FI	1	09/01/2012	8817368	SERAFINA	General cargo ship	1999	NL	28/11/1989	FIH
	2	31/01/2012	9468906	FINNSKY	Ro-ro cargo ship	28002	LUX	01/12/2008	FIH
	3	03/02/2012	8917742	TINGÓ	General cargo ship	3828	GIB	23/06/1989	FIH
	4	08/02/2012	9468918	FINNSUN	Ro-ro cargo ship	28002	LUX	01/12/2008	FIH

	5	17/02/2012	8801060	EMIL	General cargo ship	851	CY	15/09/1987	FIH
	6	08/03/2012	9214379	FINLANDIA	Ro-ro passenger ship	36365	IT	21/04/2000	FIH
	7	30/06/2012	8609618	BELLAND	General cargo ship	2673	MT	26/05/1986	FIH
	8	03/09/2012	8609606	NEDLAND	General cargo ship	2673	MT	27/06/1986	FIH
	9	31/10/2012	9468920	FINNTIDE	Ro-ro cargo ship	28002	LUX	01/12/2008	FIH
	10	29/11/2012	9468932	FINNWAIVE	Ro-ro cargo ship	28002	LUX	01/12/2008	FIH
	11	17/12/2012	9145164	FINNFELLOW	Ro-ro passenger ship	33724	SE	03/03/1999	FIH
FR	1	31/05/2012		ARK FORWARDER	General cargo ship	12,350	UK	1988	FR
	2	28/02/2012		ADARA	Bulk carrier ship	37,500	LUX	2011	FR
	3	19/01/2012		ACAMAR	Bulk carrier ship	37,577	LUX	2011	FR
	4	10/02/2012		ATRIA	Bulk carrier ship	37,000	LUX	2011	FR
	5	21/03/2012		NORMAN VOYAGER	Passenger ship	7,000	UK	2008	FR
LUX	1	12/09/2012	9457165	HATCHE	RoRo ship	29004	UK	2009	LUX
	2	12/09/2012	9457206	PAQIZE	RoRo ship	29429	UK	2010	LUX
	3	12/09/2012	9457189	QEZBAN	RoRo ship	29004	UK	2010	LUX
	4	10/09/2012	9462782	PEGASO	Special craft	2059	MT	2011	LUX
	5	11/05/2012	9539872	AMBIORIX	Self prop. cutter suction dredger	7973	BE	2010	LUX
	6	31/01/2012	7931026	GALILEI 2000	Split hopper	2153	BE	1979	LUX

						dredger						
	7	27/01/2012	9374337	MAOHI		Tanker	29993	FR (Polynesia)	2006		LUX	
	8	04/01/2012	9262780	FRANCIS BEAUFORT		Trailing suction hopper dredger	13001	ES(Tenerife)	2003		LUX	
MT ⁸	90							See footnote			MT	
PT	1	18/06/12	9183776	ALICE OLDENDORFF		Bulk Carrier ship	28747	DE	2000		PT	
	2	01/03/12	9147306	AQUARIUS BRASIL		Ro-Ro Passenger Ship	22359	UK	1999		PT	
	3	09/03/12	9249025	CARL OLDENDORFF		General Cargo Ship	19882	DE	2002		PT	
SE	1	15/05/2012		MJÄLTÖ		Service vessel	38	FI	2012		SE	
	2	28/09/2012		ESTELLE AF ÖSTERGÖTLAND		Passenger ship	19	FI	2012		SE	
	3	15/10/2012	8027767	BAUGE		Tug/salvage ship	235	DK	1981		SE	
	4	04/12/2012	9241231	MONTFRED		Tug/salvage ship	268	ES	2001		SE	
	5	15/12/2012	7218084	MIGG		Tug/salvage ship	333	FI	1972		SE	

Table 2. Cargo and passenger ships transferred from one EU register to another register within the Union

2006

Member State	No.	Date of transfer	IMO no	Name	Ship type	Tonnage	Current register	Year of build	From register*
BE	1	17/02/2006	9182291	NAMUR	Oil tanker	159397	FR	2000	BE

⁸ BE (1), CY(4), FI (1), FR (1), DE(55), EL(9), IT (3), LUX (5), NL(2), NL Antilles(1), Curacao(1), PT(3), ES(3), GIBR (1)

2	28/04/2006	9045089	ACHIEVER	Container ship	5025	GIB	1992	BE
3	3/05/2006	9031454	BELIEVER	Container ship	5006	MT	1992	BE
4	6/07/2006	8813910	DISCOVERY	Cable Layer	8248	Primary Register Isle of Man /Bareboat Register LUX	1990	Primary Register BE/Bareboat Register LUX
5	5/10/2006	9083902	CONCEIVER	Container ship	5026	NL	1994	BE
6	11/10/2006	9083067	PERCEIVER	Container ship	5026	NL	1994	BE
7	28/12/2006	9016911	CRYSTAL AMETHYST	Chemical/Oil product Tanker	5677	Primary Register MT/Bareboat Register LUX	1992	Primary Register BE/Bareboat Register LUX
8	28/12/2006	9327059	CRYSTAL DIAMOND	Chemical/Oil product Tanker	7903	LUX	2006	Primary Register BE/Bareboat Register LUX
9	28/12/2006	9016923	CRYSTAL EMERALD	Chemical/Oil product Tanker	5677	Primary Register MT/Bareboat Register LUX	1992	Primary Register BE/Bareboat Register LUX
10	28/12/2006	9016935	CRYSTAL PEARL	Chemical/Oil product Tanker	5677	Primary Register MT/Bareboat Register LUX	1992	Primary Register BE/Bareboat Register LUX
11	28/12/2006	9327047	CRYSTAL TOPAZ	Chemical/Oil product Tanker	7903	LUX	2006	Primary Register BE/Bareboat Register LUX
DK 1	13/02/2006	7423732	DITTE THERESA	Oil tanker	2.813,00	MT	1976	DIS
2	28/06/2006	8215754	EAST EXPRESS	Cargo ship	3.504,00	MT	1983	DIS
3	2/11/2006	7361324	PRINCESS OF SCANDINAV	Ro-Ro passenger ship	22.528,00	BG	1976	DIS

EE	1	05/04/2006	9107203	TALLINK AUTOEXPRESS	Passenger Ship	4859	ES (CSR)	1995	Estonian Ship Register
	2	31/08/2006	7827225	REGINA BALTICA	Passenger Ship	18345	LV	1980	Estonian Ship Register
	3	19/12/2006	6523107	GLORIA	Cargo Ship	657		1965	Estonian Ship Register
EL	1	05/09/2006	9226982	PANSOFIA	M/V	39126	IT	2001	GREEK
ES	1	17/01/2006	7615323	VOLCAN DE TAHICHE	Cargo ship	4177.00	MT	1981	ES (Canary Islands)
	2	06/02/2006		MURUETA 263	Cargo ship	2995.00	IE		ES (Canary Islands)
	3	06/02/2006		MURUETA 266	Cargo ship	2995.00	IE		ES (Canary Islands)
	4	06/02/2006		MURUETA 261	Cargo ship	2995.00	IE		ES (Canary Islands)
	5	06/02/2006		MURUETA 262	Cargo ship	2995.00	IE		ES (Canary Islands)
	6	06/02/2006		MURUETA 264	Cargo ship	2995.00	IE		ES (Canary Islands)
	7	06/02/2006		MURUETA 265	Cargo ship	2995.00	IE		ES (Canary Islands)
	8	14/02/2006	9359571	VULCANO 491	Chemical tanker	13671.00	IT		ES (Canary Islands)
	9	14/02/2006	9360491	FACTORIA 151	Multipurpose ship	2956.00	PT		ES
	10	14/02/2006	9360489	FACTORIA 150	Multipurpose ship	2956.00	PT	2008	ES
	11	14/02/2006	9360477	FACTORIA 149	Multipurpose ship	2956.00	PT		ES
	12	24/03/2006		FREIRE 631	Container ship	2990.00	UK		ES
	13	12/05/2006		FREIRE 632	Container ship	2999.00	UK		ES
	14	22/05/2006	8701193	VISTAMAR	Passenger ship	7478.00	MT	1989	ES (Canary Islands)
	15	02/08/2006	9371775	VULCANO 489	Chemical tanker	13666.00	CY		ES
	16	02/08/2006		C-820	Cargo ship	14759.00	CY		ES

	17	28/09/2006	9384435	VULCANO 508	Chemical tanker	19986.00	CY			ES
	18	14/12/2006	7718515	CARMEN B	Container ship	20169.00	EL	1978		ES
FI	1	11/01/2006	8806163	SOHIA	General cargo	3826	LT	22/02/1989		FIH
	2	18/05/2006	9020699	NATURA	Oil tanker	51161	NOR	09/03/1992		FIH
	3	15/09/2006	8402333	TERVI	Oil tanker	28292	NOR	1984		FIH
	4	27/10/2006	8414570	PALVA	Oil tanker	28292	NOR	14/06/1985		FIH
FR	1	2006		JADE EXPRESS	Passenger ship		IT	1998		FR
	2	2006		VAL DE LOIRE	Passenger ship		DK	1987		FR
	3	2006		TREGUIER	Dry cargo ship		MT	1986		FR
	4	2006		SOLIDOR 5	Passenger ship		IT	2000		FR
IE	1	26/1/06	9188881	JONATHAN SWIFT	Passenger ship	5989	CY	1998		IE
	2	17/1/06	9214991	ULYSSES	Ro-Ro Passenger ship	50,938	CY	2000		IE
	3	07/02/06	9142605	ISLE OF INISHMORE	Ro - Ro Passenger ship	34031	CY	1995		IE
	4	23/02/06	9048287	ARKLOW VALLEY	Dry Cargo ship	2827	CY			IE
	5	04/05/06	9117961	ARKLOW SPRAY	Dry Cargo ship	2300	N.A.	1995		IE
	6	05/05/06	9117959	ARKLOW SPIRIT	Dry Cargo ship	2271	N.A.	1995		IE

	7	21/06/06	8806149	ERNST HAGEDORN	Cargo ship	3826	DE	1989	IE
	8	09/08/06	8701947	RUBICONE	Cargo ship	8907	MT	1991	IE
LUX	1	11/05/2006	9250050	CONCORDE	Tanker	3057	UK (Gibraltar)	2003	LUX
	2	18/12/2006	9245299	LAURA H	Tanker	2982	UK (Gibraltar)	2002	LUX
MT ⁹	29						See footnote		MT
PT	1	23/03/06	7921045	SIDER PEACE	General Cargo Ship/Container Ship	4201	IT	1987	PT
	2	22/09/06	8411700	SIGAS MARQUIS	LPG Tanker	1552	MT	1984	PT
	3	20/03/06	8968870	RIVER CLOUD II	Cruise Ship, Inland Waterways	1670	MT	2001	PT
	4	27/10/06	7360710	SNAV CAMPANIA	Ro-Ro Passenger Ship	26919	IT	1973	PT
	5	27/10/06	7333822	SNAV SICILIA	Ro-Ro Passenger Ship	26290	IT	1987	PT
	6	17/05/06	7361312	MOBY DREA	Ro-Ro Passenger Ship	22528	IT	1974	PT
SE	1	10/10/2006	7524201	ALIDA GORTON	General cargo ship	12,750	CY	1977	SE
	2	16/11/2006	7524213	INGRID GORTON	General cargo ship	12,750	CY	1977	SE
	3	03/08/2006	7617955	JOH. GORTON	Ro-ro cargo ship	11,907	CY	1977	SE
	4	07/03/2006	7612656	MARGIT GORTON	Ro-ro cargo ship	12,750	CY	1977	SE

⁹ CY(1), EE(1), DE(8), EL(3), IT(7), LT(2), NO(2), SK(2), UK(2), GIB(1)

5	10/04/2006	7016888	VÄSTSJÖ	Oil tanker	903	U.K	1970	SE
6	11/01/2006		FINGAL	Service vessel	42	FI	1995	SE
7	10/11/2006		STORA KARLSÖ II	Passenger ship	67	GIB	1962	SE
8	19/05/2006	8027705	BITUMA	Chemical tanker, BCH	1,900	GIB	1981	SE
9	04/10/2006	7419353	HALLAREN	General cargo ship	2,877	IT	1978	SE
10	26/07/2006	7909970	TOR SCANDIA	Ro-ro cargo ship	33,652	MT	1981	SE
11	20/07/2006	7909982	TOR FLANDRIA	Ro-ro cargo ship	33,652	MT	1981	SE
12	20/07/2006		S M V 10	Unspecified vessel	234	NL	1970	SE
13	20/07/2006	6606179	TOR VIKING	Unspecified vessel	543	NL	1966	SE
14	11/04/2006	7602584	NORDWEST	General cargo ship	1,155	NOR	1977	SE
15	23/02/2006		THEODORA	Passenger ship	53	PL	1960	SE
16	07/02/2006	8107737	ALEA TONY	Chemical tanker, BCH	2,593	PT	1982	SE
17	24/01/2006	7514397	GÅLÖ	Ro-ro cargo ship	0	UK	1976	SE
18	12/05/2012		PENTA 79	Unspecified vessel	31	DE	2004	SE
19	25/10/2006	8968117	DUGA	Service vessel	103	DK	1958	SE

2007

Member State	No.	Date of transfer	IMO no	Name	Ship type	Tonnage	Current register	Year of build	From register ^a
BE	1	29/01/2007	8717403	ANTIGOON	Trailing suction hopper dredger	7851	FR	1989	BE
	2	21/02/2007	9107851	WIND	Self propelled platform	1159	DK	1995	Primary Register BE/Bareboat Register LUX
	3	10/04/2007	9172208	LOWLANDS BEILUN	Bulk carrier	85906	MT	1999	BE
	4	10/05/2007	8708543	SAFMARINE CONCORD	Container ship	18037	NL	1988	BE
	5	14/12/2007	9332224	CAPTAIN P. EGGLEZOS	Bulk carrier	41115	MT	2007	BE
DK	1	17/01/2007	8516988	MÆRSK LIFTER	Cargo ship	2.311,00	NL	1988	DIS
	2	5/02/2007	8516952	MÆRSK LEADER	Cargo ship	2.311,00	NL	1987	DIS
	3	15/02/2007	9235000	NORD STEALTH	Tanker	56.346,00	MT	2001	DIS
	4	25/09/2007	8906212	DAN PROVIDER	Cargo ship	852,00	LT	1989	DIS
	5	2/10/2007	7824637	ANNE SOFIE	Cargo ship	1.957,00	BG	1979	DIS
	6	2/11/2007	9050101	SEA LION	Cargo ship	2.815,00	DE	1993	DIS
	7	26/11/2007	9295103	SIMARA ACE	Passenger ship	1.665,00	SE	2007	DIS
	8	17/12/2007	8820286	MARIANNE THERESA	Chemical tanker	1.716,00	CY	1991	DIS
	9	19/12/2007	7615414	DUKE OF SCANDINAVIA	Ro-ro passenger ship	19.589,00	FR	1978	DIS
EE	1	04/04/2007	9125891	TALLINK AUTOEXPRESS 4	Passenger Ship	3971	EL	1996	EE
	2	20/11/2007	7527887	VIRONIA	Passenger Ship	13788	PL	1976	EE
	3	07/12/2007	7816874	MELOODIA	Passenger Ship	17955	PT(MAR)	1979	EE

EL	1	24/04/2007	7377567	IONIAN SKY	Passenger ship	19539	CY	1975	EL
ES	1	10/01/2007		FREIRE 633	Container ship	2990.00	NL		ES
	2	29/01/2007	9384447	VULCANO 509	Tanker	19994.00	CY		ES
	3	02/04/2007		FREIRE 634	Container ship	2990.00	UK		ES
	4	31/05/2007	9384459	VULCANO 510	Tanker	19994.00	CY		ES
	5	04/06/2007	9182784	PRIMO M	Chemical tanker	11377.00	IT	2000	ES (Canary Islands)
	6	05/06/2007	9372676	C-822	Container ship	14759.00	CY	2007	ES
	7	05/06/2007	9372688	C-823	Container ship	14759.00	CY		ES
	8	06/06/2007		C-821	Container ship	14706.00	UK		ES
	9	07/06/2007		C-826	Tanker	8568.00	IT		ES
	10	15/06/2007	9373541	FREIRE 635	Container ship	2990.00	UK		ES
	11	15/06/2007		FREIRE 636	Container ship	2990.00	UK		ES
	12	03/08/2007	7501613	PATRICIA DEL MAR	Passenger ship	9079.00	IT	1975	ES (Canary Islands)
	13	31/08/2007	9359583	VULCANO 492	Chemical tanker	13671.00	IT		ES
	14	01/10/2007		C-827	Chemical tanker	10273.00	IT		ES
	15	05/11/2007	9371414	NAVAL GIJON 702	Container ship	10965.00	DE		ES
	16	05/11/2007	9371426	NAVAL GIJON 703	Container ship	10965.00	DE		ES
	17	13/11/2007		BALENCIAGA C-400	Multipurpose ship	4098.00	UK	2008	ES
	18	04/12/2007	9181106	EL GRECO	Passenger ship	22152.00	YK	1998	ES (Canary Islands)
FI	1	24/09/2007	8917716	SMARAGDEN	General cargo	3828	NL	07/06/1989	FIH
	2	08/11/2007	8917728	PASSADEN	General cargo	3828	NL	23/06/1989	FIH

FR	1	02/05/2007		POINTE DU SABLON	Chemical tanker	4,469	MT	1991	FR
	2	15/03/2007		PROVIDENCE	Container ship	22,420	MT	1995	FR
	3	22/06/2007		BRO ALBERT	Dry cargo ship	45,990	UK	1995	FR
	4	12/06/2007		BRO ALEXANDRE	Dry cargo ship	45,999	UK	1995	FR
	5	13/06/2007		BRO ARTHUR	Dry cargo ship	45,999	UK	1995	FR
	6	22/08/2007		AUTOCARRIER	Car carrier	1,472	PT	1982	FR
	7	22/08/2007		AUTOLINE	Car carrier	1,550	PT	1983	FR
	8	29/08/2007		LE CASTELLET	Car carrier	2,437	PT	1982	FR
	9	30/08/2007		MONTLHERY	Car Carrier	2,200	PT	1982	FR
	10	26/11/2007		FS PROVENCE	Dry cargo ship	8,758	MT	1996	FR
IE	1	01/02/07	9201839	ARKLOW VENTURE	Cargo ship	2829	N.A.	1998	IE
	2	01/02/07	9224166	ARKLOW VENUS	Cargo ship	2829	N.A.	2000	IE
	3	01/02/07	9163635	ARKLOW VIKING	Cargo ship	2829	N.A.	1998	IE
	4	17/12/07	8318128	CLONTARF	Cargo ship	3780	N.A.	1982	IE
LUX	1	04/01/2007	9302669	KERMARIA	Tanker	23244	DK	2004	LUX
	2	07/09/2007	8302698	VERA	Tanker	2054	BeE	1985	LUX
	3	17/12/2007	9241255	NANTOR	Bulk carrier	27198	MT	2001	LUX
	4	21/02/2007	9107851	WIND	Barge	1159	DK	1995	LUX
	5	30/07/2007	9377066	LACANAU	Tanker	6953	FR	2007	LUX
LV	1	20/02/2007	9216559	LATGALE	Tanker	39085	MT	2001	LV
	2	19/02/2007	9216547	ZEMGALE	Tanker	39085	MT	2001	LV

MT ¹⁰	37																MT
PT	1	01/06/07	8103389	HUDSON RIVER	General Cargo Ship	4281	SK	1982									PT
	2	04/01/07	9133549	SIGAS CRUSADER	LPG Carrier	2458	MT	1996									PT
	3	17/10/07	8325315	SIGAS MATE	LPG Carrier	1687	MT	1984									PT
	4	13/02/07	8915809	ALMUDAINA	Oil Tanker	77477	CY	1993									PT
	5	09/06/07	8325468	ARROYOPRIO DOS	Ro-Ro Cargo ship	8126	MT	1985									PT
SE	1	09/05/2007	5352381	FRAMVIK	Oil tanker	228	CY	1954									SE
	2	06/07/2007		GÖTA	Ro-ro cargo ship	180	DK	1932									SE
	3	23/03/2007	8705060	ELIDA AV STENUNGSÖN	Passenger ship	197	U.K	1988									SE
	4	06/02/2007	9336268	EUROPALINK	Passenger ship, international traffic	45,923	FI	2007									SE
	5	26/03/2007	8716007	BRO TRANSPORTER	Chemical tanker, IBC	7,973	EL	1989									SE
	6	15/05/2007		ELLÖSFJORD	Passenger ship	28	IS	1978									SE
	7	24/05/2007	9133599	BITLAND	Chemical tanker, IBC	4,025	NL	1995									SE
	8	21/02/2007		BASTÖ	Passenger ship	93	NOR	1990									SE
	9	05/06/2007	1000655	AMORINA	Passenger ship	319	ES	1934									SE
	10	07/06/2007		VEJLER	Service vessel	60	Faroe islands	1947									SE
	11	22/01/2007	5408984	GUNNFJAUN	General cargo ship	674	NOR	1963									SE

¹⁰ BG(3), HR(2), CY(5), DE(3), EL(13), IT(2), LV(3), NO(1), SE(1), GIB(4)

	12	17/12/2007		JENNY KRUSE	Passenger ship	27	FI	1946	SE
	13	03/07/2007	5418070	SVANIC	Passenger ship	182	LV	1962	SE
	14	27/08/2007	6421921	EBBA VICTOR	Unspecified vessel	475	NL	1964	SE
	15	17/12/2007	6700638	ADENIA	General cargo ship	418	NOR	1966	SE
	16	19/09/2007	7822859	LÜBECK LINK	Passenger ship, international traffic	33,163	U.K	1980	SE
	17	23/08/2007	7822861	MALMÖ LINK	Passenger ship, international traffic	33,163	U.K	1980	SE

2008

Member State	No.	Date of transfer	IMO no	Name	Ship type	Tonnage	Current register	Year of build	From register*
BE	1	5/06/2008	9399557	OSTRIA S	Bulk carrier	41115	EL	2008	BE
	2	3/07/2008	9347970	EWL WEST INDIES	Container ship	9948	LT	2006	BE
	3	22/07/2008	9077800	BOURGOGNE	Oil tanker	161178	UK	1996	BE
	4	28/11/2008	9387542	OLYMPIA	Oil tanker	160991	FR	2008	BE
DK	1	3/01/2008	9107887	KIRSTEN MÆRSK	container ship	81,488,00	EL	1997	DIS
	2	7/01/2008	8913875	CEC BLUE	Cargo ship	2,815,00	MT	1991	DIS
	3	11/01/2008	9181194	ELSE MÆRSK	Tanker	159,187,00	MT	2000	DIS
	4	11/01/2008	9015670	CEC SPRING	Cargo ship	2,815,00	MT	1993	DIS

	5	14/01/2008	9085522	REGINA MÆRSK	Container ship	81.488,00	EL	1996	DIS
	6	14/01/2008	9000778	CEC PACIFIC	Cargo ship	2.815,00	MT	1992	DIS
	7	1/02/2008	9295490	SILUNA ACE	Passenger ship	1.665,00	SE	2007	DIS
	8	7/02/2008	9085560	KATRINE MÆRSK	Container ship	81.488,00	EL	1996	DIS
	9	11/02/2008	9015682	SOFRANA BLIGH	Cargo ship	2.815,00	MT	1993	DIS
	10	7/04/2008	8802791	LONE WONSILD	Tanker	1.711,00	EL	1990	DIS
	11	8/04/2008	8806046	ELLA WONSILD	Tanker	1.716,00	EL	1990	DIS
	12	22/04/2008	8516976	MÆRSK LAUNCHER	Cargo ship	2.311,00	NL	1988	DIS
	13	29/04/2008	9085534	KNUD MÆRSK	Container ship	81.488,00	NL	1996	DIS
	14	6/05/2008	9085558	KAREN MÆRSK	Container ship	81.488,00	DE	1996	DIS
	15	23/06/2008	8913887	CEC VENTURE	Cargo ship	2.815,00	MT	1992	DIS
	16	16/07/2008	8518572	NORDIC SWAN	Tanker	7.090,00	MT	1986	DIS
EE	1	11/03/2008	9031428	LANDY	Cargo Ship	4090	(NIS)	1991	EE
	2	21/07/2008	9333694	GALAXY	Passenger Ship	48915	SE	2006	EE
EL	1	10/06/2008	8705486	LOTUS	M/T	42809	MT	1987	EL
	2	19/05/2008	9354612	HELLAS GLORY	M/T	47059	MT	2008	EL
ES	1	17/01/2008		FREIRE 638	Container ship	3388.00	UK		ES
	2	17/01/2008		FREIRE 637	Cargo ship	3388.00	UK		ES
	3	06/02/2008		NEPTUNE AEGLI	Car carrier	15850,00	MT	2001	ES (Canary Islands)
	4	03/03/2008		ARMON VIGO 54	Product tanker	4474,00	PT		ES
	5	17/03/2008		BELLISSIMO	Passenger ship	190,00	FR	2002	ES (Canary Islands)

	6	19/03/2008	9240976	NEPTUNE DYNAMIS	Car carrier	15829,00	MT	2002	ES (Canary Islands)
	7	29/07/2008	9081693	JAUME I	Cargo ship	3989,00	MT	1994	ES (Canary Islands)
	8	05/11/2008	9176149	ORONE	Passenger ship	394,00	IT	1997	ES (Canary Islands)
	9	21/11/2008	9156034	MAR PATRICIA	Chemical tanker	10527,00	MT	1998	ES (Canary Islands)
	10	28/11/2008		V-220	Tanker	2637,00	PT		ES
	11	19/12/2008		MURUETA 287	Cargo ship	2999,00	IE		ES
	12	19/12/2008		MURUETA 286	Cargo ship	2999,00	IE		ES
	13	19/12/2008		MURUETA 285	Cargo ship	2999,00	IE		ES
	14	19/12/2008		MURUETA 284	Cargo ship	2999,00	IE		ES
FI	1	22/04/2008	9375654	Viking XPRS	Ro-ro passenger	35778	SE	16/04/2007	FI M
FR	1	31/03/2008		FS VICTORIA	Dry cargo carrier		LV	2000	FR
	2	21/11/2008		SICHEM CASTEL	Chemical tanker		MT	1992	FR
	3	18/12/2008		CILAO	Dry cargo carrier		LUX	1996	FR
LUX	1	07/11/2008	9152789	MARFRET PROVENCE	Container ship	26131	DE	1998	LUX
	2	09/01/2008	9102203	ELVERSELE	Tanker	23519	BE	1996	LUX
	3	18/12/2008	9209453	CATHERINE	RoRo ship	21287	BE	2002	LUX
	4	19/08/2008	8716186	REGINA	Tanker	1731	LUX (Inland ships register)	1987	LUX
LV	1	22/01/2008	8226519	TELO	Ro-ro cargo ship	9479	MT	1983	LV
MT ¹¹	24						See footnote		MT

¹¹ HR(2), CY(1), DK(2), DE(2), EL(7), IT(5), LV(1), NOR(1), PT(1), RO(1), SK(1)

PT	1	15/08/2008	9020417	LJMA CHEMIST	Chemical Tanker	2634	DE	1992	PT
SE	1	29/01/2008	8306498	SILJA FESTIVAL	Passenger ship, international traffic	34,414	CY	1986	SE
	2	05/08/2008		ENFORCER II	Service vessel	22	DK	2001	SE
	3	28/08/2008		PROVIDER	General cargo ship	32	UK	2007	SE
	4	13/11/2008	7524029	NORDLANDIA	General cargo ship	1,155	IT	1977	SE
	5	15/12/2008	7413725	RIND	Service vessel	974	NL	1975	SE
	6	15/12/2008	7413713	FRIGG	Service vessel	974	NL	1975	SE
	7	21/02/2008	7517624	ARNE TISELIUS	Passenger ship	237	DK	1976	SE
	8	29/05/2008		HAFNIA	Tug/salvage ship	91	FI	1955	SE
	9	22/02/2008		HJÄLPAREN	Service vessel	35	FI	1956	SE
	10	01/02/2008		GUSTAVSVIK	Tug/salvage ship	132	FI	1945	SE
	11	01/04/2008	8634053	ERIK	Unspecified vessel	268	FI	1981	SE
	12	01/04/2008	8634065	FREDRIK	Unspecified vessel	268	FI	1981	SE
	13	05/02/2008	9305556	STENA ARCTICA	Oil tanker	65,293	FI	2005	SE
	14	29/04/2008	7434925	MADZY	General cargo ship	7,486	IT	1976	SE
	15	26/05/2008	9208071	EUROSTAR BARCELONA	Passenger ship, international traffic	26,995	IT	2001	SE
	16	05/05/2008	7802067	BALTIC PRESS	Ro-ro cargo ship	6,413	NL	1979	SE

17	31/03/2008	7805150	TRITON AV GÖTEBORG	Oil tanker	996	NOR	1979	SE
18	31/03/2008	7347641	MEGA	Tug/salvage ship	768	DE	1974	SE

2009

Member State	No.	Date of transfer	IMO no	Name	Ship type	Tonnage	Current register	Year of build	From register*
BE	1	23/01/2009	9387554	ANTARCTICA	Oil tanker	160991	FR	2009	BE
	2	19/10/2009	9386512	MINERAL LONDON	Bulk carrier	88930	MT	2006	BE
	3	9/12/2009	9308869	MINERAL HONG KONG	Bulk carrier	88930	MT	2006	BE
DE	1	2009	9321093	UAL EUROPE	Container	7767	Isle of Man	2006	DE
	2	2009	9173446	HEIKE	Container	2988	MT	1998	DE
	3	2009	9255763	BELUGA SENSATION	Container	7660	GIB	2003	DE
	4	2009	9143398	BETSY S	Container	2988	MT	1998	DE
	5	2009	9165815	GLADIOLUS	General Cargo	15670	MT	1998	DE
	6	2009	9165815	GLADIOLUS	General Cargo	15670	MT	1998	DE
	7	2009	9202259	WERDER BREMEN	Container	6378	GIB	1999	DE
DK	1	18/03/2009	8027781	PETER FABER	Cable ship	2.854,00	FR	1982	DIS
	2	26/03/2009	8306591	LODBROG	Cable ship	14.358,00	FR	1985	DIS
	3	26/05/2009	9282742	NORD OCEAN	Bulk carrier	30.058,00	MT	2003	DIS
	4	28/07/2009	8820298	CLIPPER HELLE	Chemical tanker	1.716,00	MT	1991	DIS
EE	1	05/05/2009	9237589	ROMANTIKA	Passenger Ship	40803	LV	2002	EE

	2	23/10/2009	8611518	VIIRE	Passenger Ship	4101	TUR	1988	EE
EL	1	07/12/2009	9455686	MONENVASIA	M/T	91373	MT	2009	EL
	2	10/04/2009	9354624	HELLAS SERENITY	M/T	47059	MT	2008	EL
	3	10/02/2009	9329813	TALISMAN	M/T	31293	CY	2006	EL
	4	23/09/2009		CRUDE BETA	M/T	84735	MT	2008	EL
	5	6/4/2009	9548562	SAMSONTRAFIKKEN	Passenger ship	4630	DK	2009	EL
	6	2/12/2009	9352963	HELLAS FOS	LPG	47059	MT	2007	EL
ES	1	20/01/2009		MOONDIVER	Passenger ship	164,88	PT	2007	ES (Canary Islands)
	2	24/09/2009	9236303	MAR CRISTINA	Product tanker	4401,00	MT	2001	ES (Canary Islands)
	3	20/10/2009	9465239	PASSIO PER FORMENTERA	Cargo ship	6146,00	MT	2008	ES (Canary Islands)
	4	20/10/2009		MURUETA 290	Multipurpose ship	4921,00	PT		ES
	5	20/10/2009		MURUETA 289	Multipurpose ship	4921,00	PT		ES
FI	1	03/06/2009	9273727	BIRKA PARADISE	Passenger ship	34924	SE	20/10/2003	FI M
	2	09/12/2009	8609618	BELGARD	General cargo ship	2673	MT	25/06/1986	FI M
	3	30/12/2009	8406779	EEVA	General cargo ship	2932	MT	01/08/1984	FIH
FR	1	12/03/2009		FS PAULINE	Oil/chemical tanker	5,717	LUX	2005	FR
	2	06/05/2009		SICHEM CROIZIC	Chemical tanker	6,948	MT	2001	FR
	3	20/05/2009		CMA CGM CENDRILLON	Container ship	107,000	UK	2009	FR
	4	08/04/2009		CMA CGM HYDRA	Container ship	130,700	UK	2009	FR

	5	09/06/2009		CMA CGM MUSCA	Container ship		UK	2008	FR
	6	29/07/2009		CMA CGM BERLIOZ	Container ship	80,251	CY	2001	FR
	7	02/12/2009		PONT L'ABBE	Passenger ship	3,150	IT	1978	FR
IE	1	03/07/09	9238404	ARKLOW ROSE	Cargo ship	2999	N.A.	2001	IE
	2	03/07/09	9238404	ARKLOW RIVER	Cargo ship	2999	N.A.	2002	IE
LUX	1	08/01/2009	9177806	EUPEN	Tanker	23952	DE	1999	LUX
	2	14/04/2009	9242508	LOWLANDS MIMOSA	Bulk carrier	29885	MT	2002	LUX
LV	1	16/09/2009	8813972	KEGUMS	Dry cargo ship	3555	CY	1989	LV
	2	10/11/2009	7004342	SKORPION	Oil tanker	1660	EE	1970	LV
MT¹²	21						See footnote		MT
PT	1	19/12/2009	9352195	PAYAL	Chemical Tanker	23304	MT	2007	PT
SE	1	14/10/2009	9121699	TÄRNLAND	Oil tanker	6,534	DK	1996	SE
	2	25/11/2009	9221267	TÄRNVIK	Chemical tanker, IBC	9,980	DK	2001	SE
	3	29/10/2009	9232955	TÄRNHAV	Chemical tanker, IBC	9,980	DK	2002	SE
	4	02/12/2009	9277371	TÄRNVÅG	Chemical tanker, IBC	9,993	DK	2003	SE
	5	03/03/2009		TVÅHUNDRATRETTIOF YRA	Service vessel	35	UK		SE
	6	09/12/2009		BYGGAREN	Service vessel	59	FI	1973	SE
	7	23/11/2009	8305937	TRANSMAPLE	Ro-ro cargo ship	13,533	GIB	1984	SE

¹² CY(1), DE(5), EL(4), IT(4), LUX(1), NOR(5), SE(1)

8	23/11/2009	8305949	TRANSOAK	Ro-ro cargo ship	13,525	GIB	1984	SE
9	23/03/2009	9215505	STENA NORDICA	Passenger ship, international traffic	24,206	UK	2000	SE
10	09/11/2009	9300829	TÄRNHOLM	Chemical tanker, IBC	9,993	DK	2005	SE
11	29/11/2009	9167930	TÄRNFORS	Chemical tanker, IBC	5,698	NOR	1998	SE

2010

Member State	No.	Date of transfer	IMO no	Name	Ship type	Tonnage	Current register	Year of build	From register*
BE	1	15/06/2010	9328625	C2C ASTRALIS	Container ship	6901	LUX	2004	BE
	2	12/10/2010	9160190	TI CREATION	Oil tanker	156505	EL	1998	BE
CZ	1	23/10/2010	906 41 90	WESTERMUEHLEN	Container Ship	14 961	DE	1993	CZ
DE	1	2010	8000226	THJELVAR	Ro-Ro- Passenger Ship	17053	FI	1980	DE
	2	2010	9252929	FEHN MIRAGE	Container ship	2061	GIB	2002	DE
	3	2010	9398773	DELTA HAMBURG	Container ship	10585	CY	2008	DE
	4	2010	9209324	DAFFODIL	Container ship	36014	MT	2000	DE

	5	2010	9165803	EIGHT OCEAN	Container ship	15670	MT	1998	DE
	6	2010	9209348	DANDLE	Container ship	36014	MT	2000	DE
	7	2010	9165786	GABION	General Cargo ship	15670	MT	1998	DE
	8	2010	9165798	GALAX	General Cargo ship	15670	MT	1998	DE
	9	2010	9349679	DECRETIVE	Container ship	75395	MT	2008	DE
	10	2010	9346524	SABALAN	Container ship	54851	MT	2008	DE
DK	1	17/06/2010		LINDØ 2	Barge	1.838.00	UK	1996	DAS
	2	20/12/2010	9302669	FREJA POLARIS	Oil/Chemical tanker	23.244,00	UK	2004	DIS
EE	1	17/03/2010	7215290	SCANIA	Passenger Ship	3474	IT	1972	EE
	2	07/10/2010	9143805	KARSNES	Cargo Ship	3850	LV	1997	EE
EL	1	01/02/2010		ARIS II	Passenger ship	500	HR	2007	EL
ES	1	29/01/2010	9441142	SF ALHUCEMAS	Cargo ship	20238.00	MT	2009	ES (Canary Islands)
	2	12/03/2010	7356252	MERCEDES DEL MAR	Cargo ship	16537.00	MT	1975	ES (Canary Islands)
	3	06/05/2010	9441130	ABEL MATUTES	Cargo ship	29670.00	MT	2008	ES (Canary Islands)
	4	02/06/2010	9348625	VERONICA B	Container ship	14016.00	PT	2006	ES (Canary Islands)
	5	02/06/2010	9348637	BEATRIZ B	Container ship	14016.00	PT	2006	ES (Canary Islands)
	6	12/07/2010	9221346	MILENIUM	Cargo ship	6360.00	EL	2000	ES (Canary Islands)
	7	12/07/2010	9170183	AVEMAR DOS	Cargo ship	5517.00	MT	1997	ES (Canary Islands)
	8	13/07/2010	9162904	GARAJONAY	Passenger ship	394.00	IT	1997	ES (Canary Islands)

	9	12/08/2010	9135884	JAUME III	Cargo ship	4305.00	MT	1996	ES (Canary Islands)
	10	20/09/2010		UNL 231	Chemical tanker	4108.00	ES	1996	ES
FI	1	25/05/2010	8807416	Runner	General cargo ship	20729	CY	03/04/1989	FIH
FR	1	07/05/2010		BELISAIRE	Bulk carrier	12,200	BE	2001	FR
	2	07/05/2010		CHASSIRON	Bulk carrier	9,995	BE	2000	FR
	3	15/11/2010		TOUR POMEROL	Tanker for liquid food	7,274	MT	1998	FR
	4	16/12/2010		FS THAIS	Product tanker	15,651	BE	2002	FR
	5	05/07/2010		ST MAUD	Product tanker	10,048	BE	2001	FR
IE	1	25/05/2010	9287766	ARKLOW RESOLVE	Cargo ship	2999	N.A.	2003	IE
	2	25/05/2010	9291705	ARKLOW ROCK	Cargo ship	2999	N.A.	2003	IE
	3	05/10/2010	7724241	KILCOE	Cargo ship	9377	N.A.	1978	IE
LUX	1	05/08/2010	9231602	FS VANESSA	Tanker	11118	BE	2001	LUX
	2	12/08/2010	9302657	KERLAZ	Tanker	23244	UK	2004	LUX
	3	14/12/2010	8813910	ACERGY DISCOVERY	Cable layer	8248	UK (Isle of Man)	1990	LUX
	4	15/07/2010	9386691	BOURBON SAPPHIRE	Supply vessel	4293	NOR	2008	LUX
	5	25/08/2010	8915445	STAR CLIPPER	Passenger sailing ship	2298	MT	1992	LUX
	6	25/08/2010	8915433	STAR FLYER	Passenger sailing ship	2298	MT	1991	LUX
LV	1	11/01/2010	7411387	TOR NERINGA	Ro-ro ship	12494	IT	1975	LV
	2	29/03/2010	8819108	ZOJA II	Oil chemical	18625	MT	1989	LV

MT ¹³	28							tanker			See footnote					MT
PT	1	05/07/10	9006368	LAMEGO	General Cargo Ship	2450	CY	1994					PT			
	2	14/10/10	9342140	BALTIKDIEP	General Cargo Ship	4102	NL	2007					PT			
	3	22/03/10	5389798	LEVIATHAN	Passenger/Ro-Ro Cargo Ship	1502	IT	1963					PT			
SE	1	22/12/2010		EBRIA	Service vessel	32	CY	1992					SE			
	2	23/09/2010	7229514	GÖTALAND	Passenger ship, international traffic	18,060	CY	1972					SE			
	3	19/11/2010	9150614	BRO ANTON	Chemical tanker, IBC	11,375	DK	1999					SE			
	4	01/12/2010	9160932	BRO ATLAND	Chemical tanker, IBC	11,377	DK	1999					SE			
	5	07/07/2010	8010532	SILETTA ACE	Passenger ship, international traffic	387	DK	1981					SE			
	6	23/04/2010	9232840	MARINUS	Chemical tanker, IBC	4,823	DK	2003					SE			
	7	21/04/2010	9310355	OLYMPUS	Chemical tanker, IBC	7,515	DK	2006					SE			
	8	09/12/2010	9313101	BRO DESIGNER	Chemical tanker, IBC	11,344	DK	2006					SE			
	9	29/04/2010	9321615	TELLUS	Chemical tanker, IBC	7,515	DK	2006					SE			

¹³ BG(1), CY(4), FI(1), DE(2), EL(3), IT(10), LUX(1), NOR(2), NL, Antilles(1), PL(1), UK(1), GIB(1)

10		24/11/2010	9171498	BRO PREMIUM	Chemical tanker, IBC	29,289	DK	1999	SE
11		17/05/2010	9318228	SCORPIUS	Chemical tanker, IBC	7,636	DK	2006	SE
12		30/04/2010	7218084	PER	Tug/salvage ship	333	FI	1972	SE
13		08/10/2010	8634077	GEORGE	Service vessel	490	FI	1977	SE
14		08/10/2010	8996956	HANS	Service vessel	499	FI	1981	SE
15		15/03/2010	9211535	BITHAV	Chemical tanker, IBC	4,980	NL	2000	SE
16		01/04/2010	9284647	BIT OKTANIA	Chemical tanker, IBC	9,490	NL	2004	SE
17		10/05/2010	9419163	STENA HOLLANDICA	Passenger ship, international traffic	64,039	NL	2010	SE
18		13/01/2010	9056868	EK RIVER	Chemical tanker, IBC	10,802	NOR	1994	SE
19		04/05/2010		SEAGUARD	Service vessel	79	UK	1970	SE
20		05/08/2010		KBV 105	Unspecified vessel	20	UK		SE
21		30/09/2010	9419175	STENA BRITANNICA	Passenger ship, international traffic	64,039	UK	2010	SE
22		09/02/2010		SUPPLIER	Service vessel	15	IE	2006	SE

2011

Member State	No.	Date of transfer	IMO no	Name	Ship type	Tonnage	Current register	Year of build	From register*
--------------	-----	------------------	--------	------	-----------	---------	------------------	---------------	----------------

BE	1	9/08/2011	9549607	AMETHYST	General cargo ship	3505	MT	2011	Primary Register MT/Bareboat Register BE
	2	16/08/2011	9350290	FLANDERS LOYALTY	Gas tanker	48456	NOR	2008	BE
	3	13/09/2011	9350288	FLANDERS LIBERTY	Gas tanker	48456	NOR	2007	BE
	4	15/09/2011	9340506	LOWLANDS PATRASCHIE	Bulk carrier	32387	MT	2007	BE
DE	1	2011	9328900	SAHAND	Container ship	54851	MT	2008	DE
	2	2011	9346536	TUCHAL	Container ship	54851	MT	2008	DE
	3	2011	9395575	INES BOLTEN	Container ship	8273	CY	2009	DE
DK	1	25/07/2011	9112777	METTE MOLS	Passenger ship	14.379,00	CY	1996	DAS
	2	16/08/2011	9195810	JYTTE BRES	Cargo ship	2.876,00	MT	1999	DIS
	3	28/09/2011	9316830	LINDØ 5	Barge	2.473,00	NL	2003	DAS
	4	28/09/2011	8976255	LINDØ 3	Barge	2.473,00	NL	1998	DAS
	5	28/09/2011	8976231	LINDØ 4	Barge	2.473,00	NL	1998	DAS
EE	1	22/08/2011	9198941	SUPERFAST VII	Passenger Ship	30285	UK	2001	EE
	2	22/08/2011	9198953	SUPERFAST VIII	Passenger Ship	30285	UK	2001	EE
EL	1	26/06/2011	7432733	ELLI T	Passenger ship	12338	CY	1976	EL
ES	1	29/03/2011	9216846	OPDR TENERIFE	Container ship	7360,00	DE	2002	ES (Canary Islands)
	2	11/05/2011	9145437	CASTILLO DE MONTERREAL	Oil/Chemical tanker	21682,00	MT		ES (Canary Islands)
	3	15/09/2011		SESTAO 340	Water tanker	35299,00	LUX		ES
	4	04/10/2011	9120243	MAR VIRGINIA	Oil/Chemical tanker	6085,00	MT	1995	ES (Canary Islands)

	5	20/10/2011	9258533	GRAMPIAN SURVEYOR	Multipurpose ship	2786.00	UK	2002	ES (Canary Islands)
	6	08/11/2011		BELLISSIMO	Passenger ship	190.00	IT	2002	ES (Canary Islands)
	7	22/12/2011	9200146	MAR ROCIO	Oil/Chemical tanker	4231.00	MT	1999	ES (Canary Islands)
FI	1	07/03/2011	8806137	Najaden	General cargo ship	3826	MT	22/11/1988	FIH
	2	30/03/2011	8820107	Trenden	General cargo ship	3826	MT	05/04/1989	FIH
FR	1	14/01/2011		MAERSK GIRONDE	Container ship	61600	DK(Dis)	2002	FR
	2	15/02/2011		TIA MOANA	Passenger ship	78	MT	2003	FR
	3	23/09/2011		MAERSK GARONNE	Container ship	61,000	DK	2003	FR
IE	1	28/06/11		BANRION CHONAMARA	Passenger ship	172	N.A.	2000	IE
LUX	1	07/07/2011	8712178	ROYAL CLIPPER	Passenger sailing ship	4425	MT	2000	LUX
	2	10/03/2011	9468889	FINNBREEZE	RoRo ship	28002	FI	2011	LUX
	3	16/11/2011	9506667	BOURBON YACK	Tug and supply vessel	804	CY	2009	LUX
	4	27/10/2011	9553464	BOURBON LIBERTY 212	Supply vessel	1733	FR	2009	LUX
	5	28/10/2011	9394442	BOURBON LIBERTY 110	Supply vessel	1517	FR (RIF)	2008	LUX
	6	31/03/2011	9468891	FINNSEA	RoRo ship	28002	FI	2011	LUX
LV	1	13/07/2011	7329522	VANA TALLINN	Passenger/ro-ro	10002	CY	1974	LV

MT ¹⁴	31																	
PT	1	25/05/2011	8513168		EBERHART ESSBERGER	Chemical / Oil Tanker	2238		DE	1986								PT
	2	07/12/2011	9377183		NORDIC VICTORY	Chemical / Oil Tanker	4861		MT	2006								PT
	3	17/03/2011	9344203		HALCYON STAR	LPG Carrier	3430		MT	2007								PT
	4	04/02/2011	9344198		ATLAS STAR	LPG Carrier	3430		MT	2007								PT
	5	09/11/2011	9183506		GRAND VOYAGER	Passenger/cruise Ship	24391		IT	2000								PT
SE	1	28/06/2011	8906951		SATURNUS	Oil tanker	5,774		DK	1990								SE
	2	09/06/2011	8821761		NIMBUS	Oil tanker	4,614		DK	1991								SE
	3	15/03/2011	9163776		BRO JUNO	Chemical tanker, IBC	8,848		DK	1999								SE
	4	12/01/2011	9313096		BRO DELIVERER	Chemical tanker, IBC	11,344		DK	2006								SE
	5	26/01/2011	9313113		BRO DISTRIBUTOR	Chemical tanker, IBC	11,344		DK	2006								SE
	6	09/02/2011	9313125		BRO DEVELOPER	Chemical tanker, IBC	11,344		DK	2007								SE
	7	05/04/2011	9219264		BRO PRIORITY	Chemical tanker, IBC	21,517		DK	2001								SE
	8	21/02/2011	9219276		BRO PROVIDER	Chemical tanker, IBC	21,516		DK	2001								SE
	9	31/01/2011	9171503		MAERSK CARLA	Chemical tanker, IBC	29,289		DK	1999								SE

¹⁴ CY(11), DK(1), DE(2), EL(2), IT(8), NOR(2), NL Antilles(1), ES(2), GIB(2)

10	12/12/2011	9423815	LOKE VIKING	Offshore tug/supply ship	6,279	DK	2010	SE
11	26/01/2011	7330337	S:T OLOF	Tug/salvage ship	331	FI	1974	SE
12	17/03/2011	5046970	MONS	Tug/salvage ship	139	FI	1963	SE
13	11/11/2011	9175262	FREJA AF GÖTEBORG	Tug/salvage ship	467	Faroe islands	1998	SE
14	31/05/2011	9342451	SVITZER ODEN	Tug/salvage ship	670	Faroe islands	2005	SE
15	17/11/2011	7363970	DYNAN	Tug/salvage ship	357	Faroe islands	1974	SE
16	31/05/2011	9212450	MR SHOPPY ONE	Passenger ship, international traffic	2,679	EL	2000	SE
17	16/09/2011		RAM 9	Unspecified vessel	30	NOR		SE
18	07/04/2011	5121500	HEROS	Tug/salvage ship	111	NOR	1959	SE
19	20/10/2011	5035775	BANGSUND	Unspecified vessel	127	NOR	1960	SE
20	31/08/2011	5375008	NAJADEN	Passenger ship	173	PL	1918	SE
21	26/04/2011	9138795	STENA FREIGHTER	Ro-ro cargo ship	21,104	UK	2004	SE
22	13/01/2011	7516694	WINDENA	General cargo ship	1,770	DE	1979	SE
23	20/05/2011		JALLE	Service vessel	48	FI	1991	SE

2012

Member State	No.	Date of transfer	IMO no	Name	Ship type	Tonnage	Current register	Year of build	From register*
--------------	-----	------------------	--------	------	-----------	---------	------------------	---------------	----------------

BE	1	17/01/2012	9225005	LOWLANDS PROSPERITY	Bulk carrier	86201	DE	2001	BE
	2	27/02/2012	9227003	LOWLANDS BRILLIANCE	Bulk carrier	85906	MT	2002	BE
	3	27/04/2012	9247613	SV. KNYAZ VLADIMIR	General cargo ship	4974	MT	2003	Primary Register MT/Bareboat Register BE
	4	16/05/2012	9247637	SV. GEORGIY POBEDONOSETS	General cargo ship	4974	MT	2003	Primary Register MT/Bareboat Register BE
	5	21/05/2012	9345714	RUSICH-6	General cargo ship	4970	MT	2005	Primary Register MT/Bareboat Register BE
	6	21/05/2012	9247625	SVYATITEL ALEKSIY	General cargo ship	4974	MT	2003	Primary Register MT/Bareboat Register BE
	7	13/06/2012	9549621	BIRYUZA	General cargo ship	3505	MT	2011	Primary Register MT/Bareboat Register BE
	8	19/06/2012	9368209	RUSICH-8	General cargo ship	4970	MT	2007	Primary Register MT/Bareboat Register BE
	9	5/07/2012	9247601	SV. APOSTOL ANDREY	General cargo ship	4974	MT	2001	Primary Register MT/Bareboat Register BE
	10	10/07/2012	9368247	RUSICH-10	General cargo ship	4970	MT	2006	Primary Register MT/Bareboat Register BE
	11	6/09/2012	9360726	REYNAERT	Trailing suction hopper dredger	5005	NL	2007	Primary Register LUX/Bareboat Register BE
DE	1	2012	8020604	MERCHANT	Container ship	20594	UK	1983	DE
	2	2012	9072434	MOTTI	Ponton	5165	SE	1993	DE
	3	2012	9294159	ARIAKE	Container ship	28592	CY	2005	DE
	4	2012	9294185	PATRICIA SCHULTE	Container ship	28592	CY	2006	DE
DK	1	8/05/2012	9317054	SAGA QUEEN	Passenger ship	624,00	UK	2004	DAS

	2	7/06/2012		DBB LIFT 1	Barge	506,00	UK	1994	DAS
	3	22/06/2012	9255854	MAERSK RAS LAFFAN	Gas tanker	93.226,00	MT	2004	DIS
EL	1	12/01/2012	7827213	LUIS CRISTAL	Passenger ship	25611	MALTA	1979	EL
ES	1	23/02/2012		RUBY	Passenger ship	209,00	UK	2002	ES (Canary Islands)
	2	08/05/2012	7813561	INDALO	Cement ship	3375,00	EL	1980	ES (Canary Islands)
	3	17/07/2012	9182796	MAR ADRIANA	Oil/chemical ship	11377,00	MT	2001	ES (Canary Islands)
	4	25/10/2012	8000226	BETANCURIA	Cargo ship	17053,00	SE	1980	ES (Canary Islands)
FI	1	16/10/2012	8911736	AHTELA	General cargo ship	8610	MT	03/09/1990	FIH
FR	1	27/01/2012		MAOHI	Bulk carrier	46,177	LUX	2006	FR
	2	23/07/2012		SCANDOLA	Passenger ship	5,985	CY	1992	FR
LUX	1	08/02/2012	9468918	FINNSUN	RoRo ship	28002	FI	2011	LUX
	2	10/05/2012	9016911	CRYSTAL AMETHYST	Tanker	5677	MT	1993	LUX
	3	15/05/2012	9568392	BOURBON LIBERTY 223	Tug and supply vessel	1733	FR (RIF)	2010	LUX
	4	16/03/2012	9327047	CRYSTAL TOPAZ	Chemical tanker	7903	MT	2006	LUX
	5	16/03/2012	8917170	PRINCE HENRI	Tanker	2522	EL	1990	LUX
	6	23/05/2012	9327059	CRYSTAL DIAMOND	Chemical tanker	7903	MT	2006	LUX
	7	25/04/2012	9513543	BOURBON LIBERTY 207	Supply vessel	1733	FR (RIF)	2009	LUX
	8	29/03/2012	9016935	CRYSTAL PEARL	Tanker	5677	MT	1993	LUX
	9	29/11/2012	9468932	FINNWAIVE	RoRo ship	28002	FI	2012	LUX

	10	30/04/2012	9016923	CRYSTAL EMERALD	Tanker	5677	MT	1993	LUX
	11	31/01/2012	9468906	FINNSKY	RoRo ship	28002	FI	2011	LUX
	12	31/10/2012	9468920	FINNTIDE	RoRo ship	28002	FI	2011	LUX
MT¹⁵	13						See footnote		MT
PT	1	23/01/2012	9410519	NORDIC GLORY	Chemical / Oil Tanker	4861	MT	2007	PT
	2	13/02/2012	9410507	PRIMA	Chemical / Oil Tanker	4861	MT	2008	PT
	3	17/09/2012	9580962	OSTTANK NORWAY	Chemical Tanker	13239	MT	2010	PT
SE	1	07/09/2012	7388657	KARL-ERIK	Tug/salvage ship	324	CY	1974	SE
	2	04/07/2012	7036591	MARGITA	Chemical tanker, BCH	1,924	DK	1971	SE
	3	27/12/2007	5395797	YLVA AF KÄRINGÖN	Passenger ship	94	DK	1951	SE
	4	29/03/2012		HÄNDIG	Tug/salvage ship	91	DK	1949	SE
	5	04/04/2012		LILLY II	Passenger ship	68	DK	1890	SE
	6	04/10/2012	9157284	SELANDIA SEAWAYS	Ro-ro cargo ship	24,196	DK	1998	SE
	7	05/11/2012	9199646	VIDAR VIKING	Icebreaker	3,382	DK	2001	SE
	8	25/07/2012	9262089	TOR BEGONIA	Ro-ro cargo ship	37,722	DK	2004	SE
	9	03/08/2012	9274848	TOR FREESIA	Ro-ro cargo ship	37,722	DK	2005	SE
	10	05/09/2012	9259496	MAGNOLIA SEAWAYS	Ro-ro cargo ship	32,289	DK	2003	SE
	11	06/08/2012		TENDER	Service vessel	21	DK	2008	SE

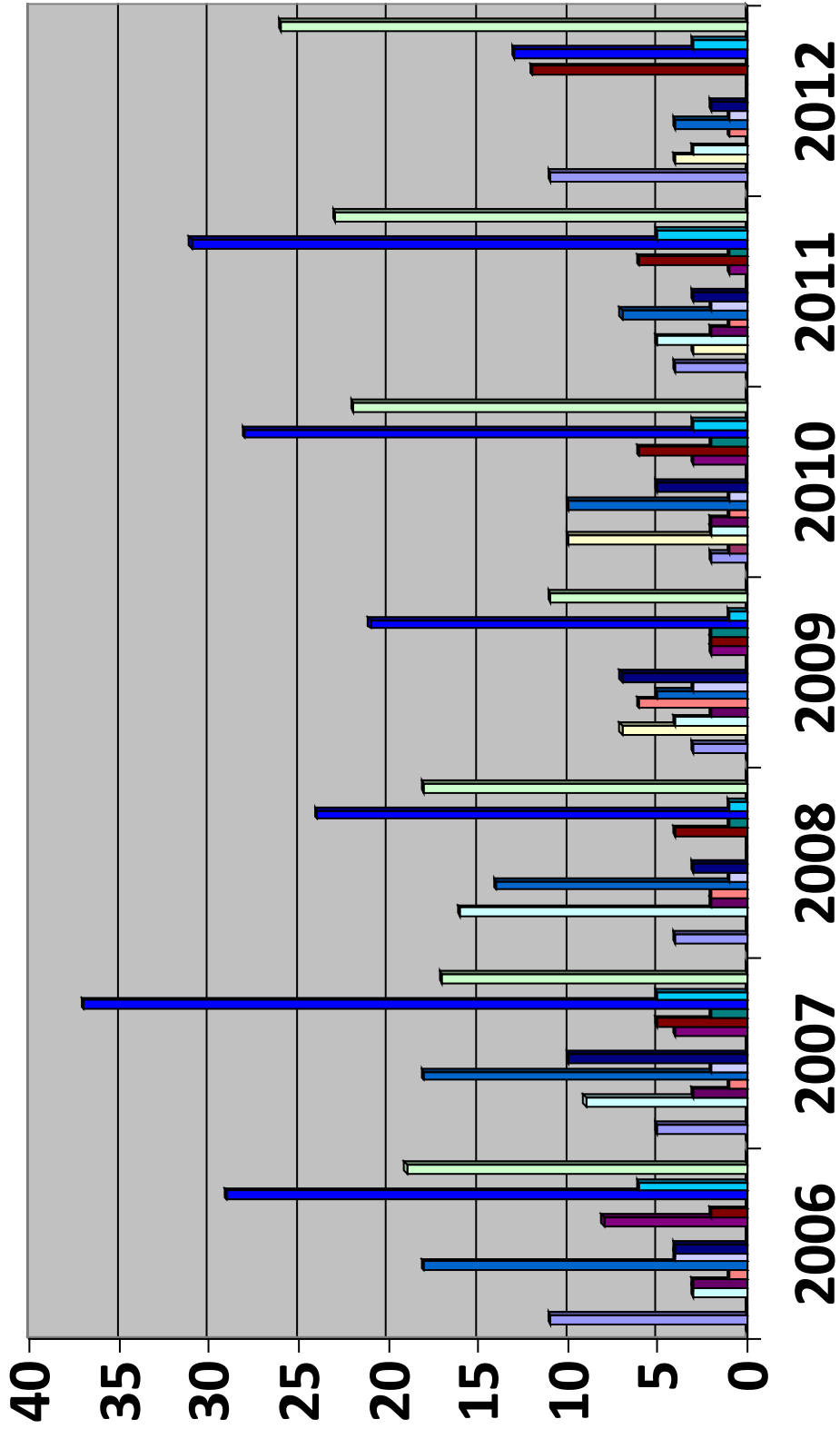
¹⁵ DK(5), FI(2), FR(1), DE(1), EL(1), IT(1), NOR(1), ES(1)

12	03/10/2012	9138006	FINNEAGLE	Passenger ship, international traffic	29,841	FI	1999	SE
13	18/09/2012	9010814	FINNARROW	Passenger ship, international traffic	25,996	FI	1996	SE
14	17/12/2012	9145164	FINNFELLOW	Passenger ship, international traffic	33,724	FI	2000	SE
15	23/03/2012	7388669	BONDEN	Tug/salvage ship	357	Faroe islands	1974	SE
16	29/08/2012	9108752	BOSS	Tug/salvage ship	496	Faroe islands	1995	SE
17	15/05/2012	9155236	BOB	Tug/salvage ship	467	Faroe islands	1997	SE
18	12/10/2012	9200158	VINGA SAFIR	Oil tanker	1,685	Faroe islands	2000	SE
19	04/07/2012	9495375	SVITZER HYMER	Tug/salvage ship	575	Faroe islands	2010	SE
20	08/11/2012	9319454	EUROPALINK	Passenger ship, international traffic	45,923	IT	2007	SE
21	18/09/2012		ALPHA AV DONSÖ	Oil tanker	68	MT	1962	SE
22	14/02/2012	5064233	PAVONA	General cargo ship	286	NL	1951	SE
23	20/01/2012	5331428	SEASIDE	Unspecified vessel	483	NOR	1953	SE
24	10/02/2012	8000226	THJELVAR	Passenger ship, international traffic	17,053	ES	1980	SE
25	17/07/2012		TVÅHUNDRAFEMTIOE TT	Service vessel	35	UK	1972	SE
26	20/04/2012	7718503	TYRUSLAND	Ro-ro cargo ship	20,882	UK	1978	SE

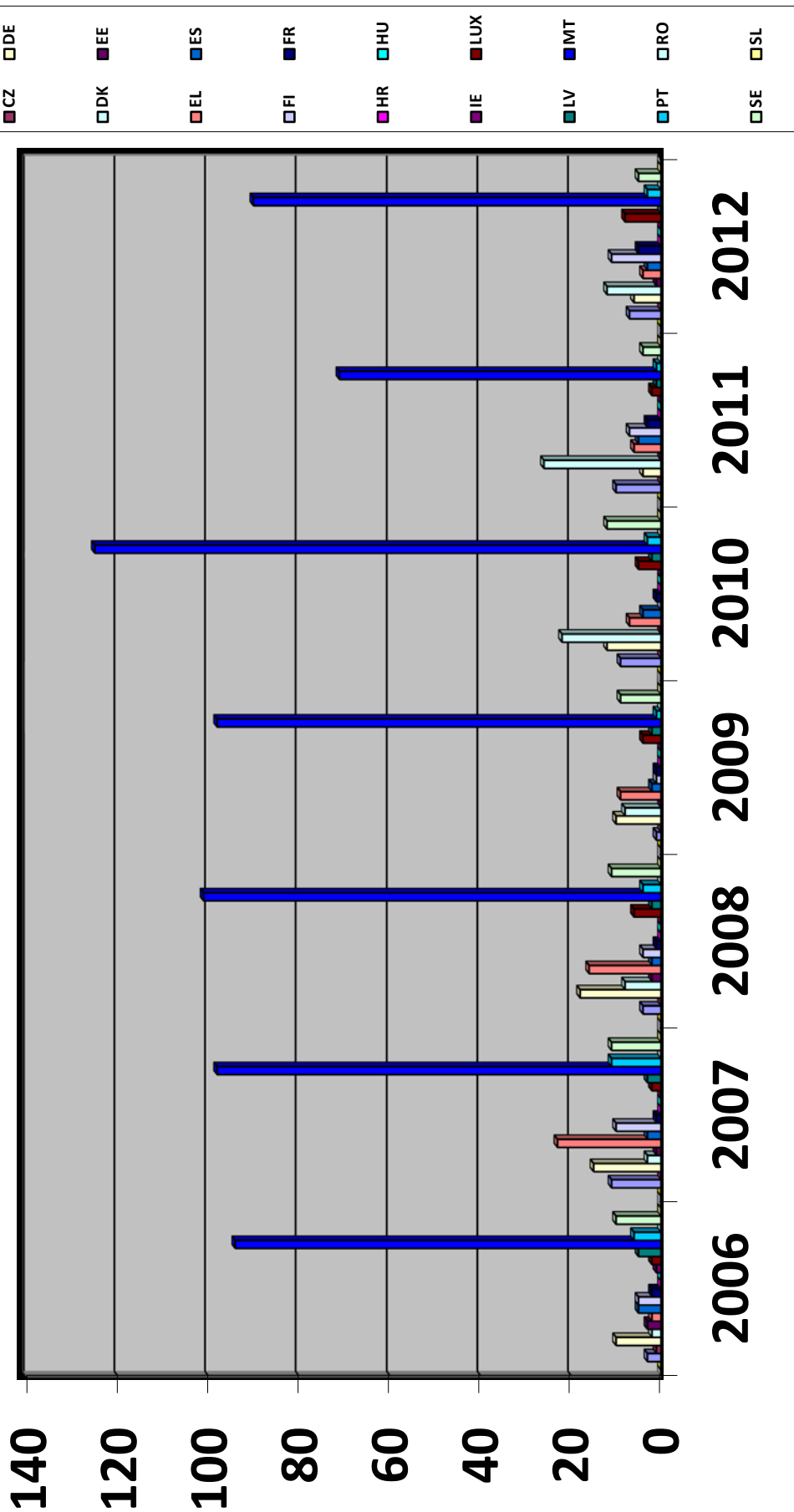
Annex 2

1. Cargo and Passenger Ship transfers

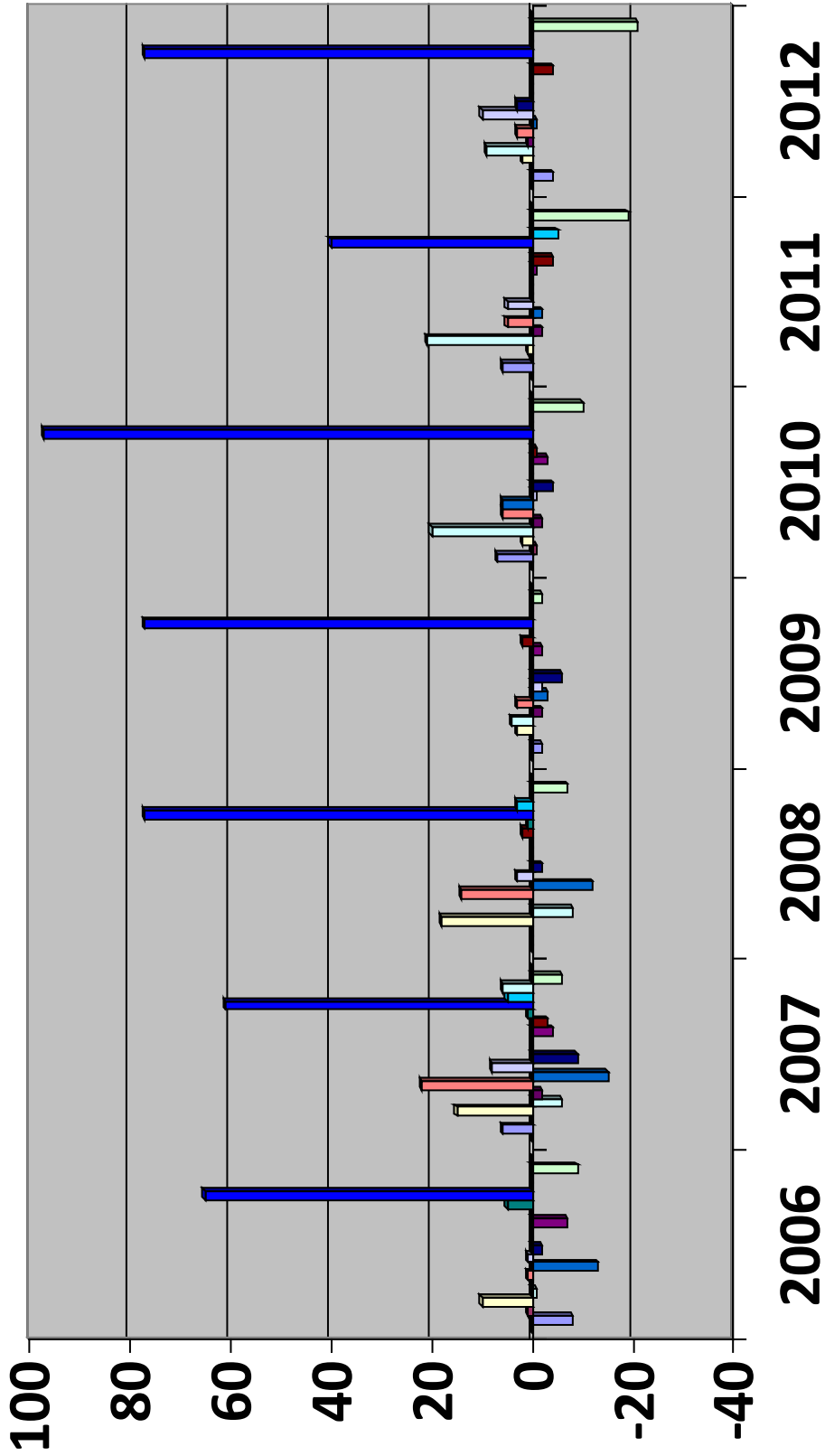
Graph 1. Cargo and Passenger ships deleted from each EU Member State register



Graph 2. Cargo and passenger ships transferred to each EU Member State register from another register within the Union

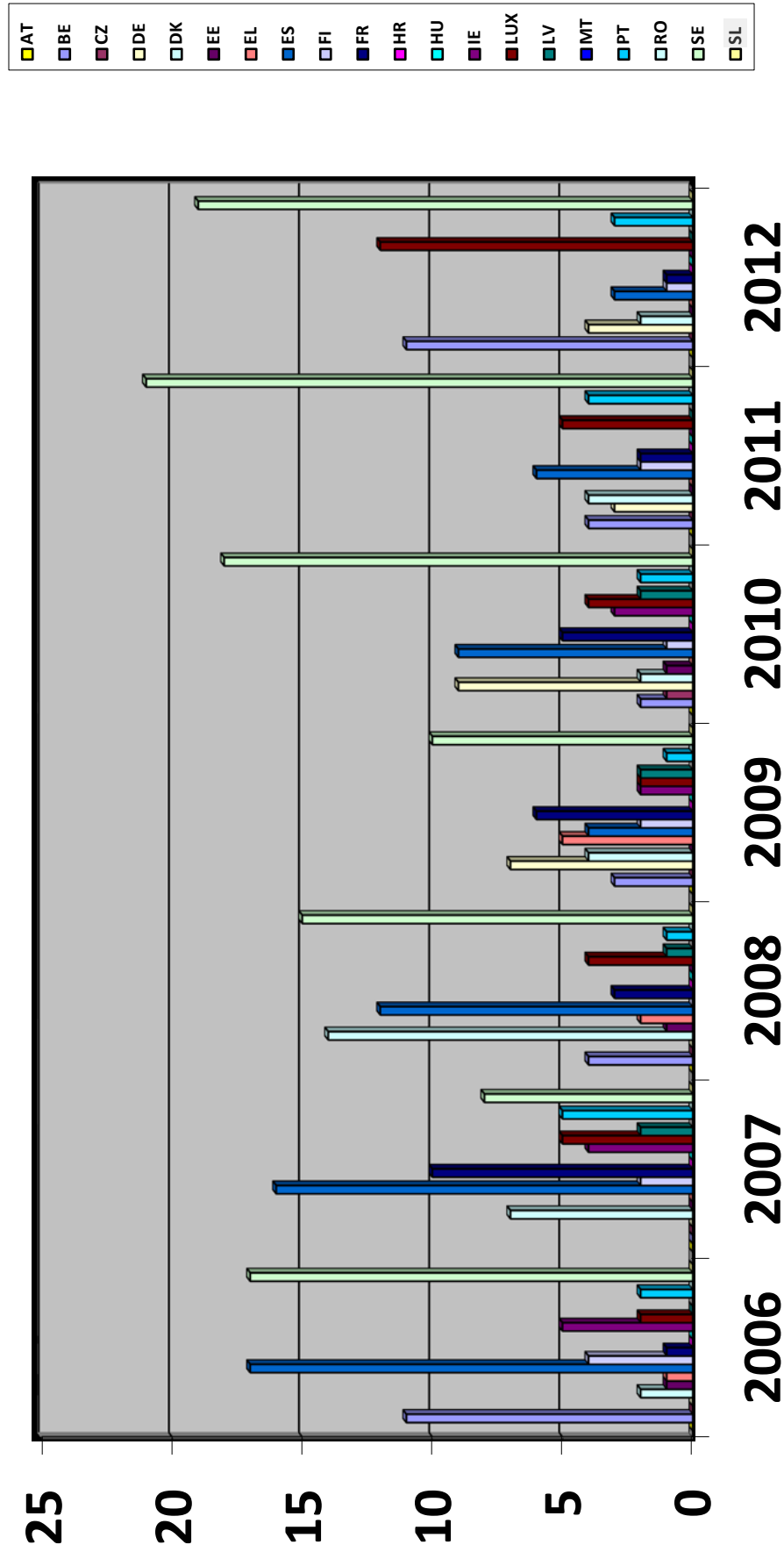


Graph 3. Cargo and passenger ships changes per each Member State register

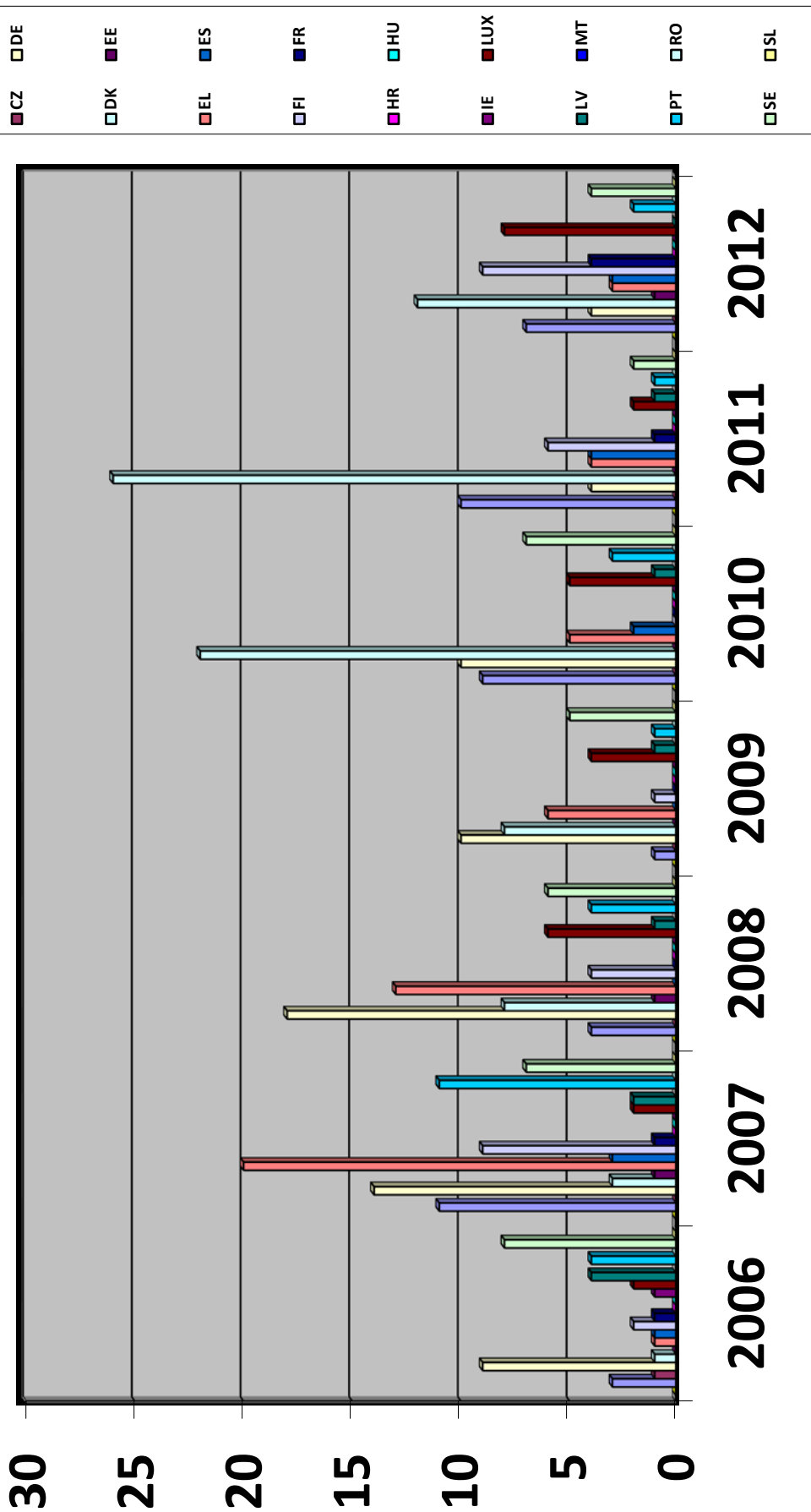


2. Cargo Ship transfers

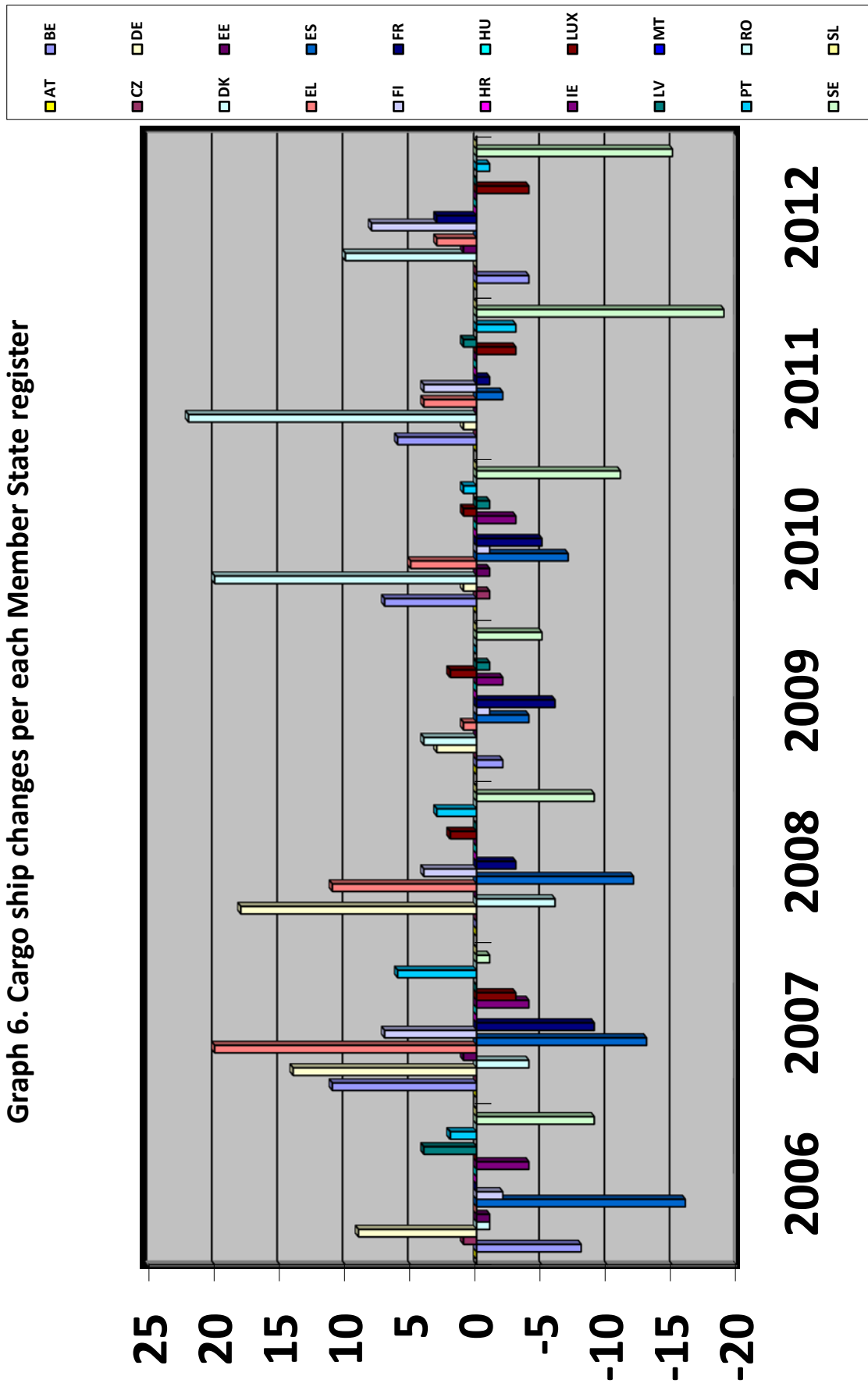
Graph 4. Cargo ships deletions from each EU Member State register



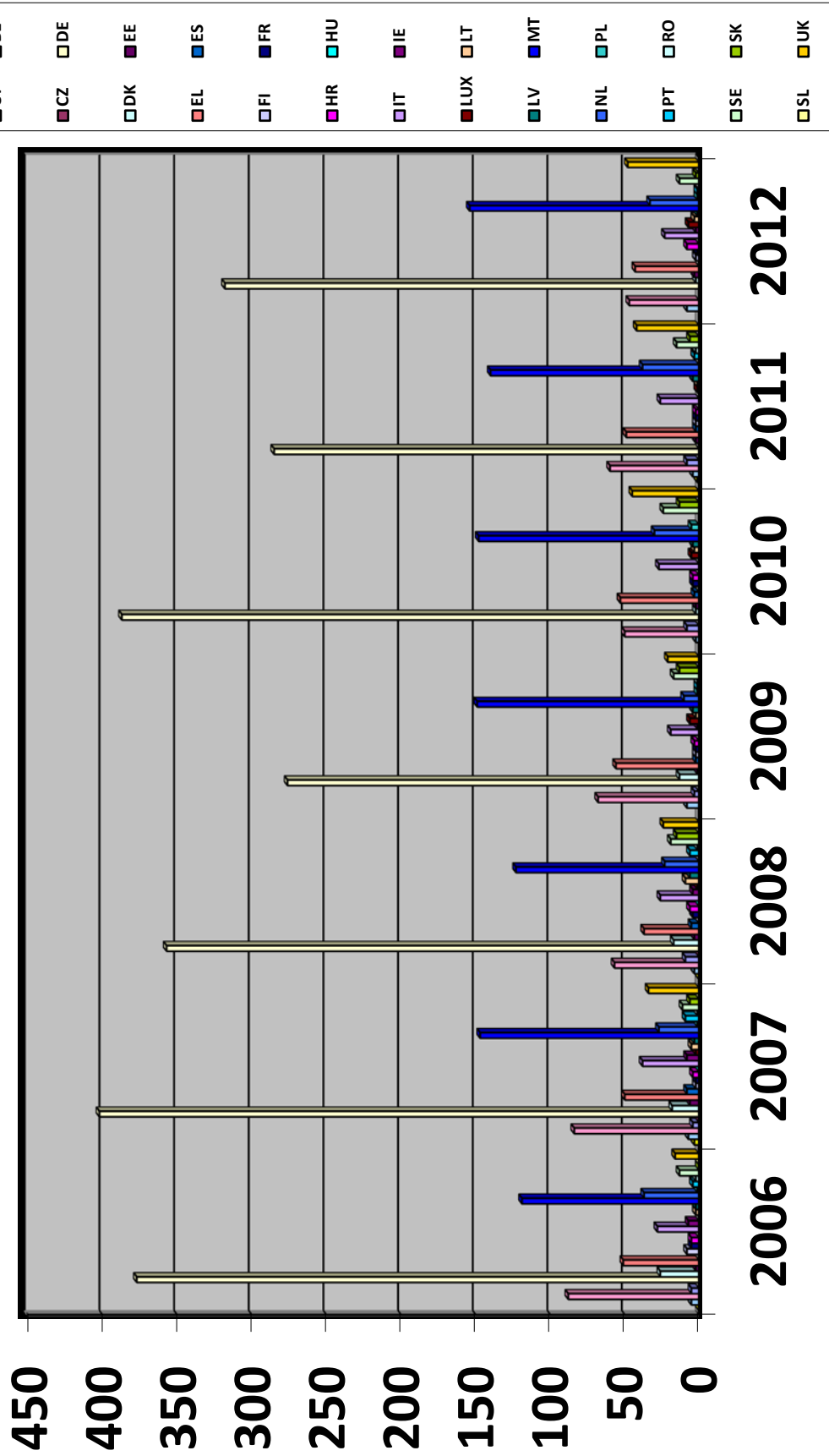
Graph 5. Cargo ships transferred to each EU Member State register from another register within the Union



Graph 6. Cargo ship changes per each Member State register



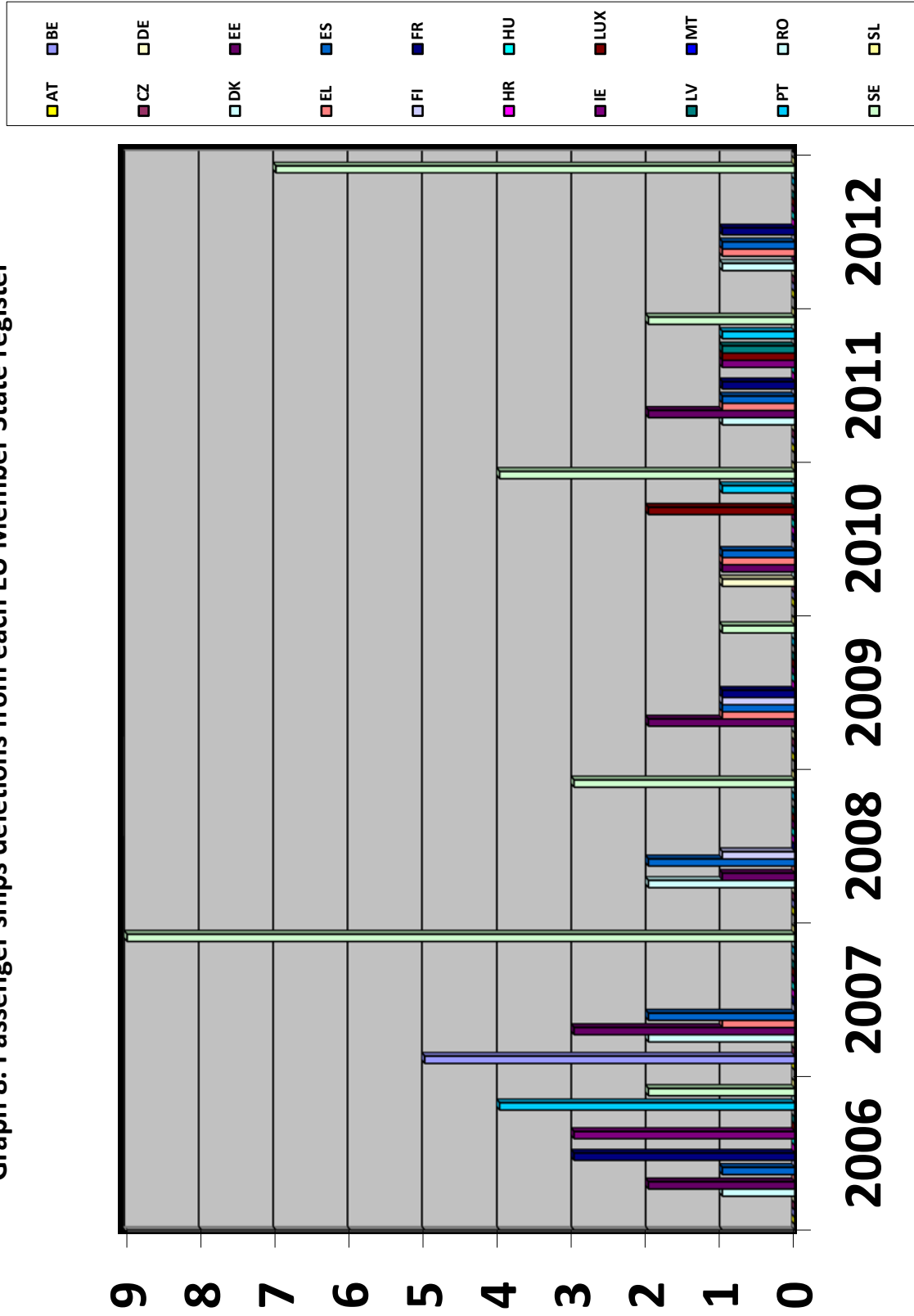
Graph 7. Cargo ships transferred from each EU Member State register to third countries register



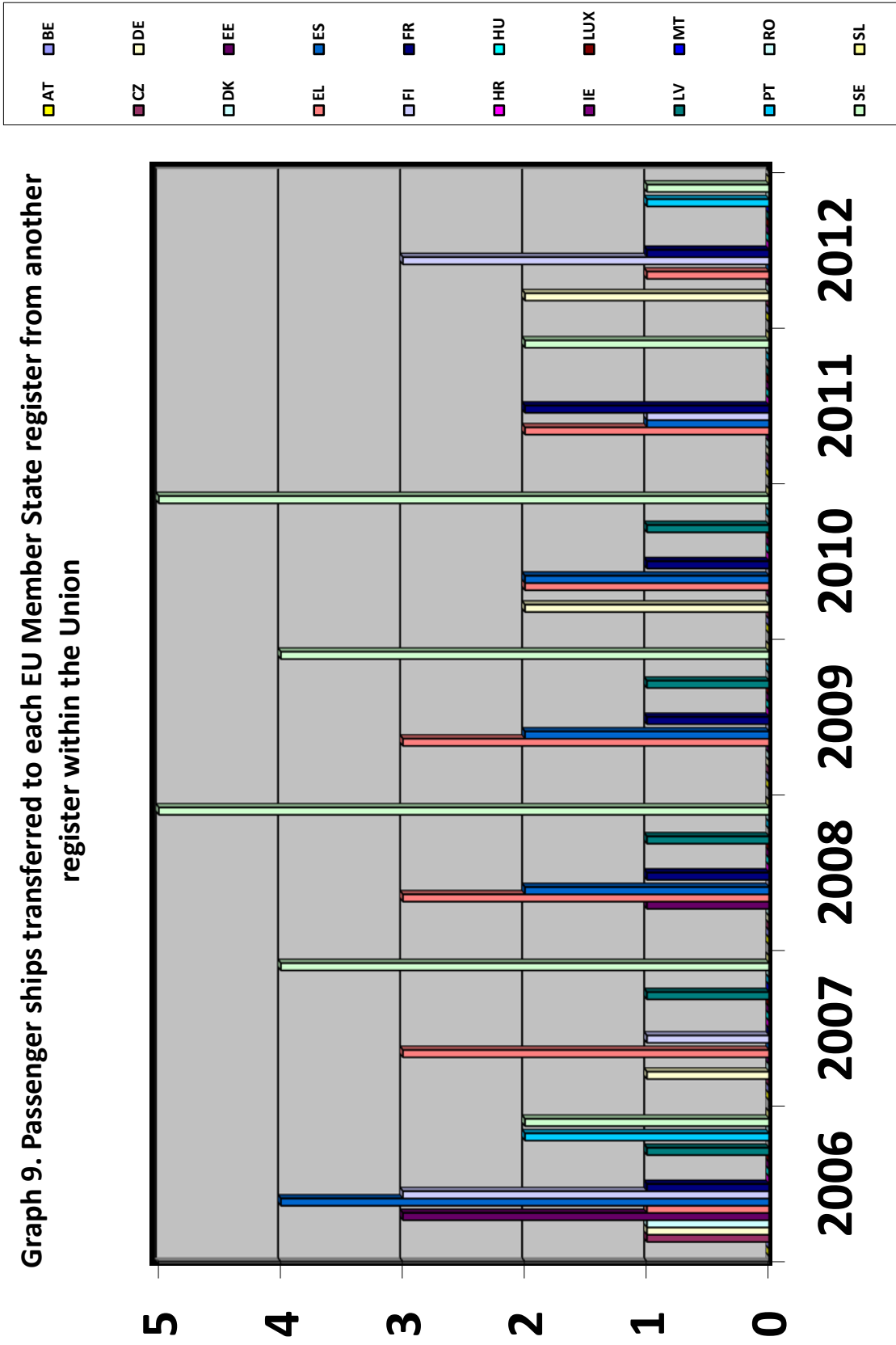
Annex 4

3. Passenger Ships

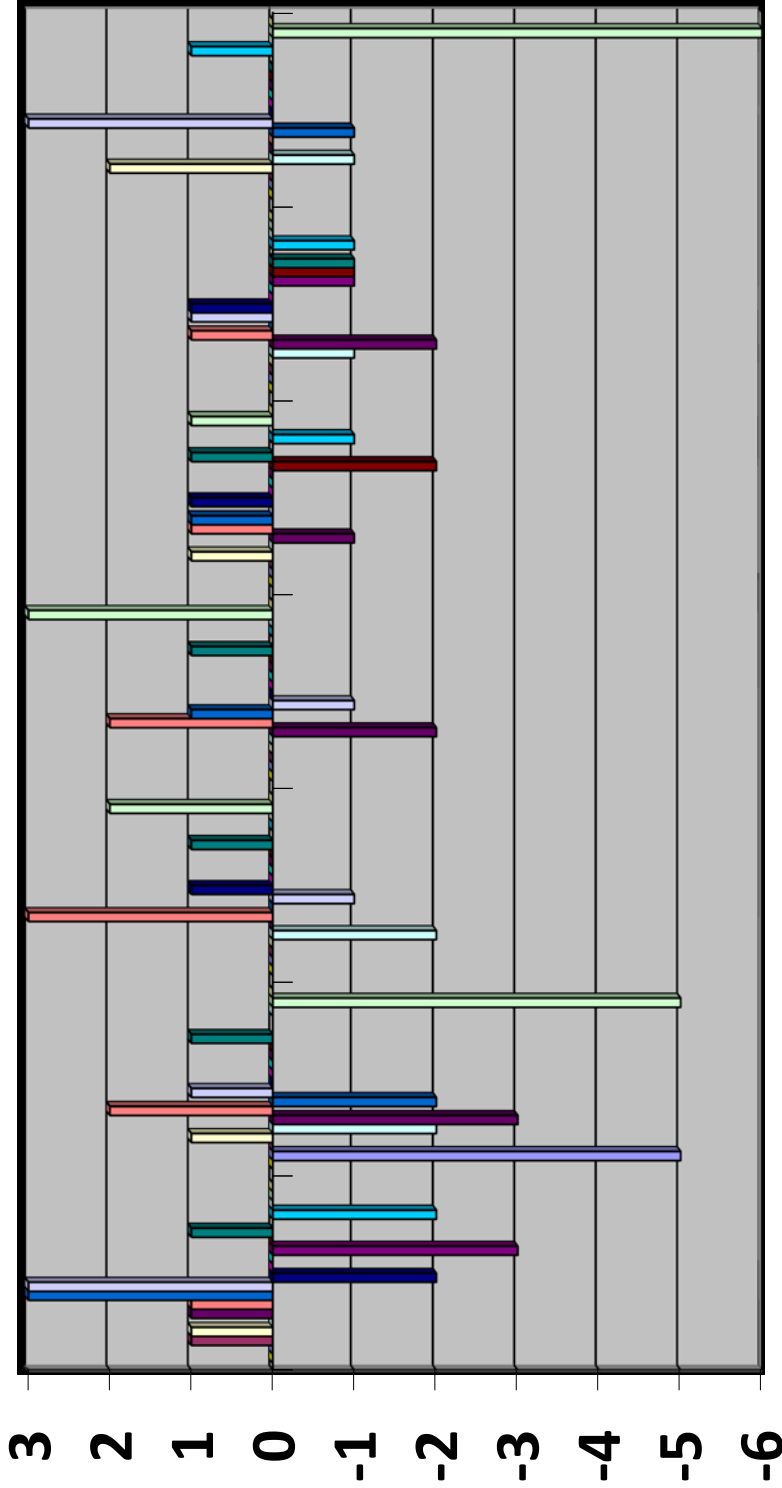
Graph 8. Passenger ships deletions from each EU Member State register



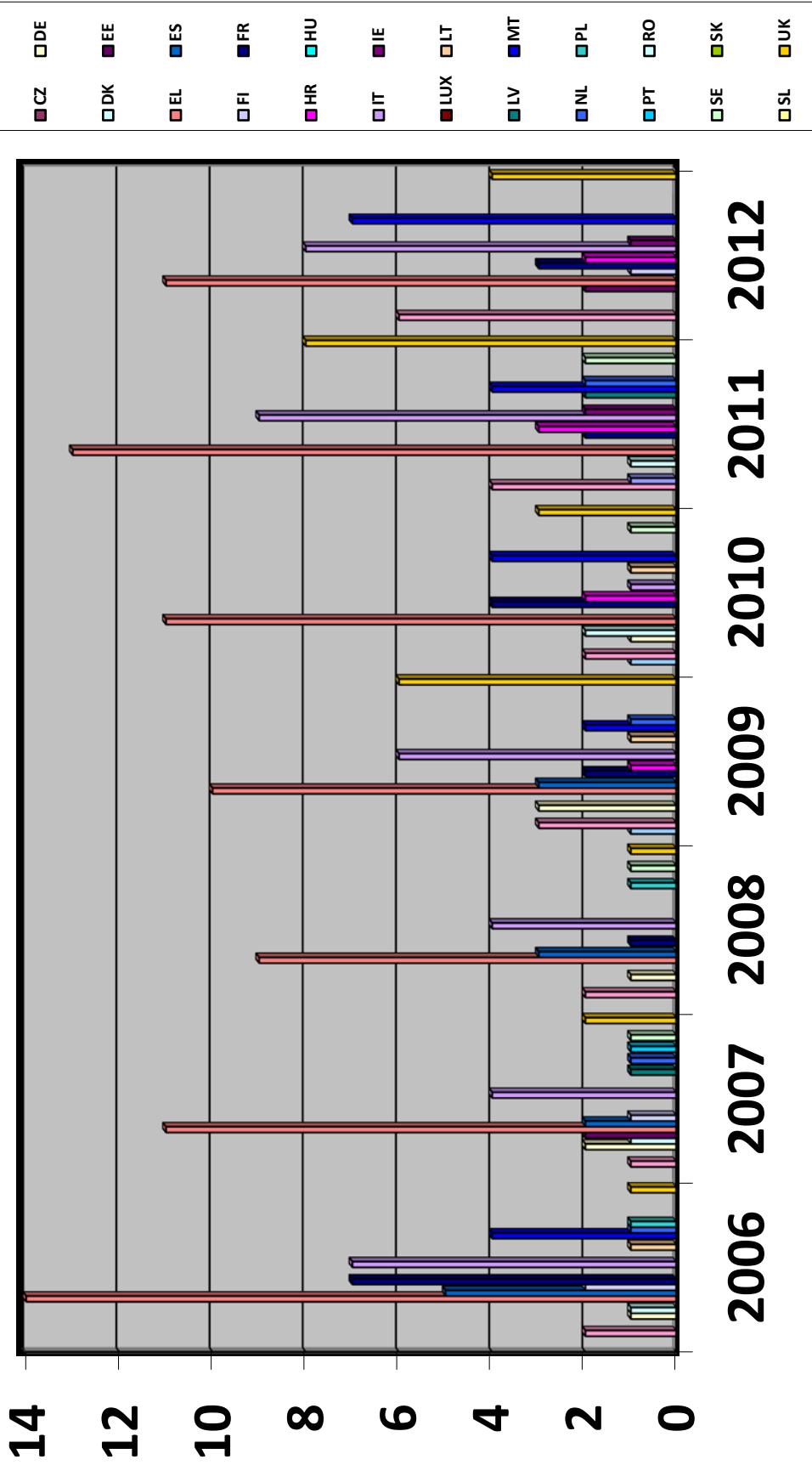
Graph 9. Passenger ships transferred to each EU Member State register from another register within the Union



Graph 10. Passenger ships changes per each Member State register



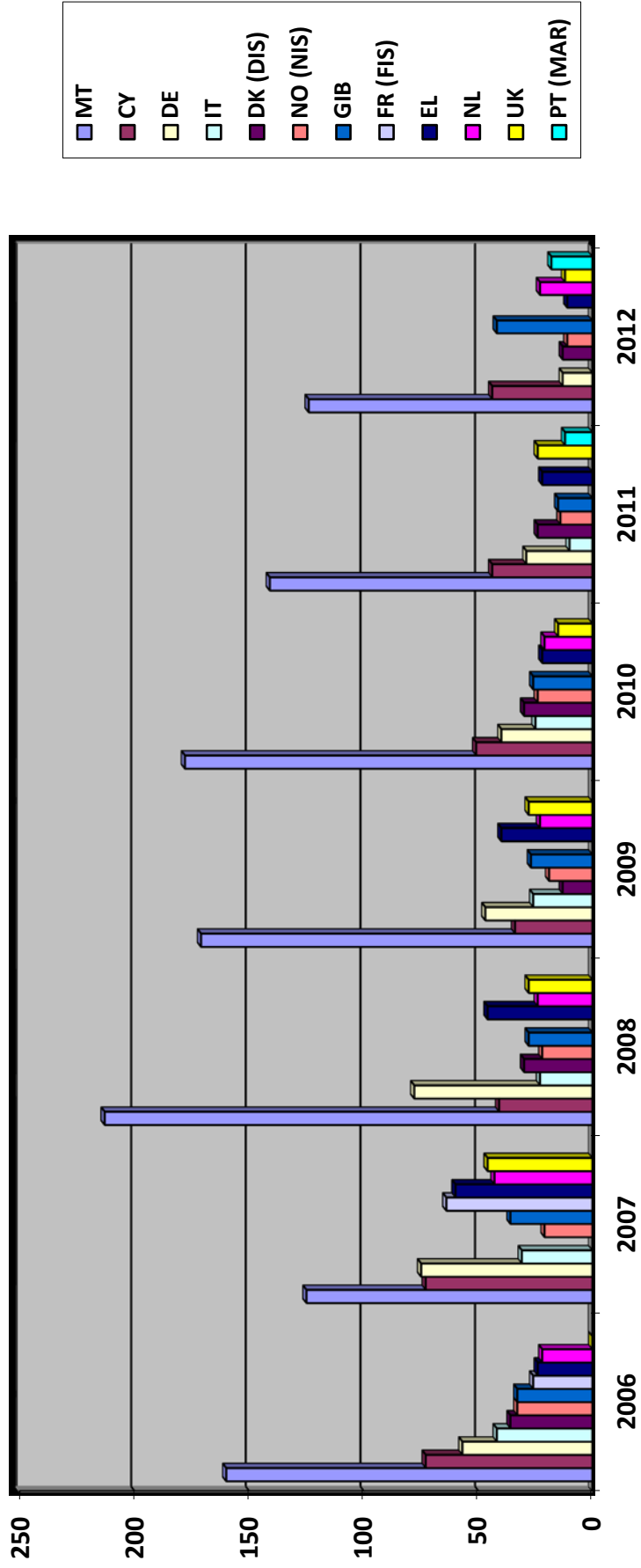
Graph 11. Passenger ships transferred from each EU Member State register to third countries register



Annex 5

Top Ten EU flag State registers (2006-2012)

Graph 12. Top Ten Receiving EU Member State Flags Per Year (transfers in from both EU and third country registers)



The graph above is provided below in a tabular format with figures

Top Ten Receiving EU Member State Flags (transfers in from both EU and third country registers) with ship figures

Ranking	2006	2007	2008	2009	2010	2011	2012
1	MT(160)	MT(215)	MT(213)	MT(171)	MT(178)	MT(141)	MT(124)
2	CY(73)	DE(75)	DE(78)	DE(47)	CY(51)	CY(44)	CY(44)
3	DE(57)	CY(73)	EL(46)	EL(40)	DE(40)	DE(29)	Gib(42)
4	IT(42)	FR (FIS) (64)	CY(41)	CY(34)	DK (DIS) (30)	UK(24)	NL(23)
5	DK((36)	EL(60)	DK (DIS) (30)	UK(28)	Gib(26)	DK (DIS) (24)	PT (MAR) (18)
6	NO (NIS) (33)	UK(46)	Gib(28)	Gib(27)	IT(25)	EL(22)	DE(13)
7	Gib(33)	NL(43)	UK(28)	IT(26)	NO (NIS) (24)	Gib(15)	DK (DIS) (13)
8	FR (FIS) (26)	Gib(36)	NL(24)	NL(23)	EL(22)	NO (NIS) (14)	UK(12)
9	EL(24)	IT(31)	IT(23)	NO (NIS) (19)	NL(21)	PT (MAR) (12)	NO (NIS) (11)
10	NL (22)	NO (NIS) (21)	NO (NIS) (22)	DK (DIS) (13)	UK(15)	IT(10)	EL(11)