



Council of the
European Union

Brussels, 25 May 2018
(OR. en)

7107/06
ADD 1 DCL 1

SCH-EVAL 38
COMIX 238

DECLASSIFICATION

of document: ST7107/06 ADD 1 RESTREINT UE/EU RESTRICTED
dated: 11 April 2006
new status: Public

Subject: Schengen evaluation of the new Member States - Additional questions presented by the Member States at the meeting of the Schengen Evaluation Working Party on 10 January 2006 - Reply by HUNGARY
- Additional annex

Delegations will find attached the declassified version of the above document.

The text of this document is identical to the previous version.



**COUNCIL OF
THE EUROPEAN UNION**

Brussels, 11 April 2006

**7107/06
ADD 1**

RESTREINT UE

**SCH-EVAL 38
COMIX 238**

NOTE

from : the Republic of Hungary

to : the Schengen evaluation Working Party

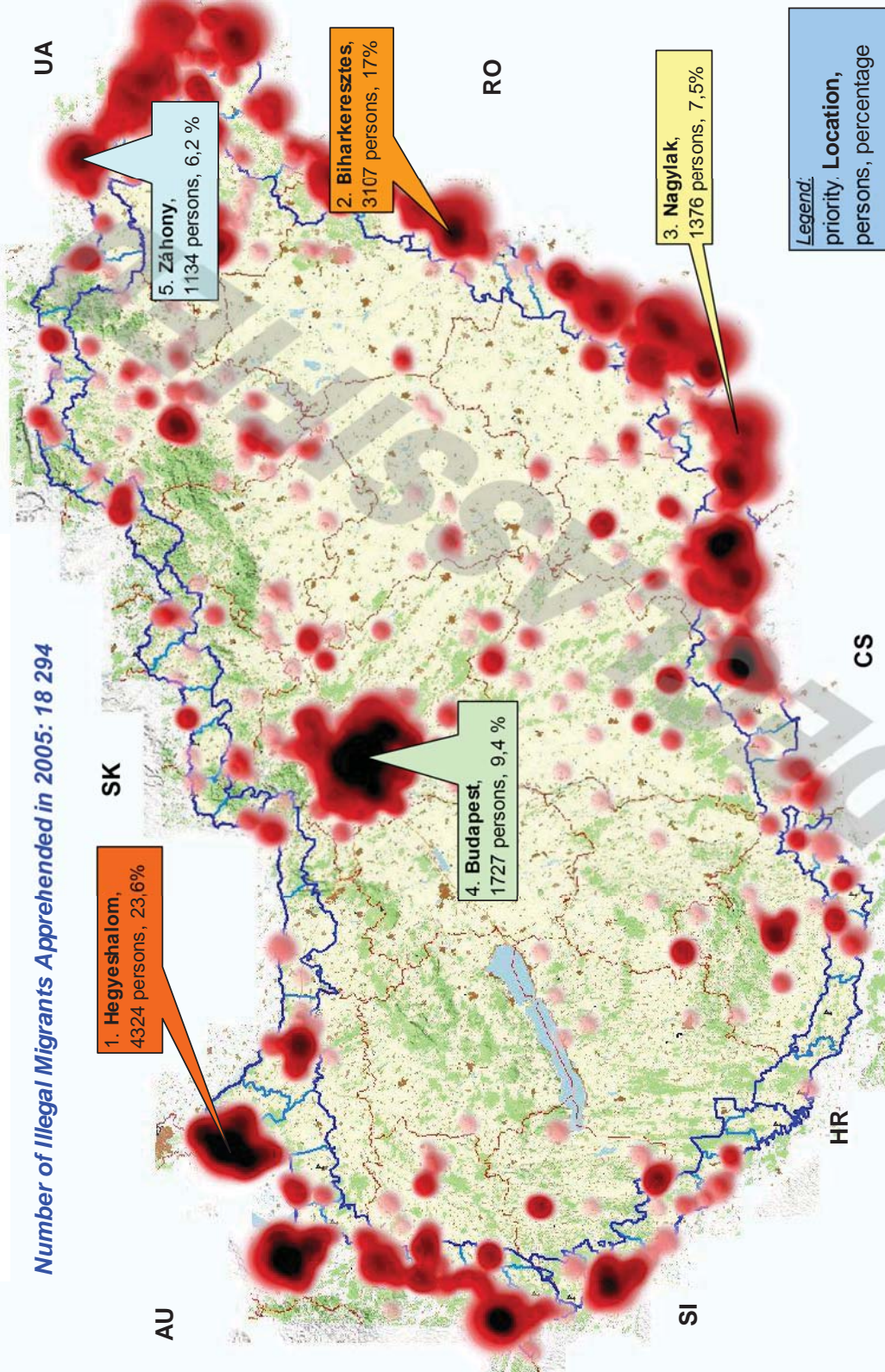
No. prev. doc. : 5324/06 SCHEVAL 9 COMIX 47

Subject : Schengen evaluation of the new Member States - Additional questions presented by the Member States at the meeting of the Schengen Evaluation Working Party on 10 January 2006 - Reply by HUNGARY
- Additional annex

Delegations will find enclosed an additional Annex, i.e. a map of border sections and critical points threatened by pressure of illegal migration, as referred to in question 5) in doc. 7107/06 SCHEVAL 38 COMIX 238.

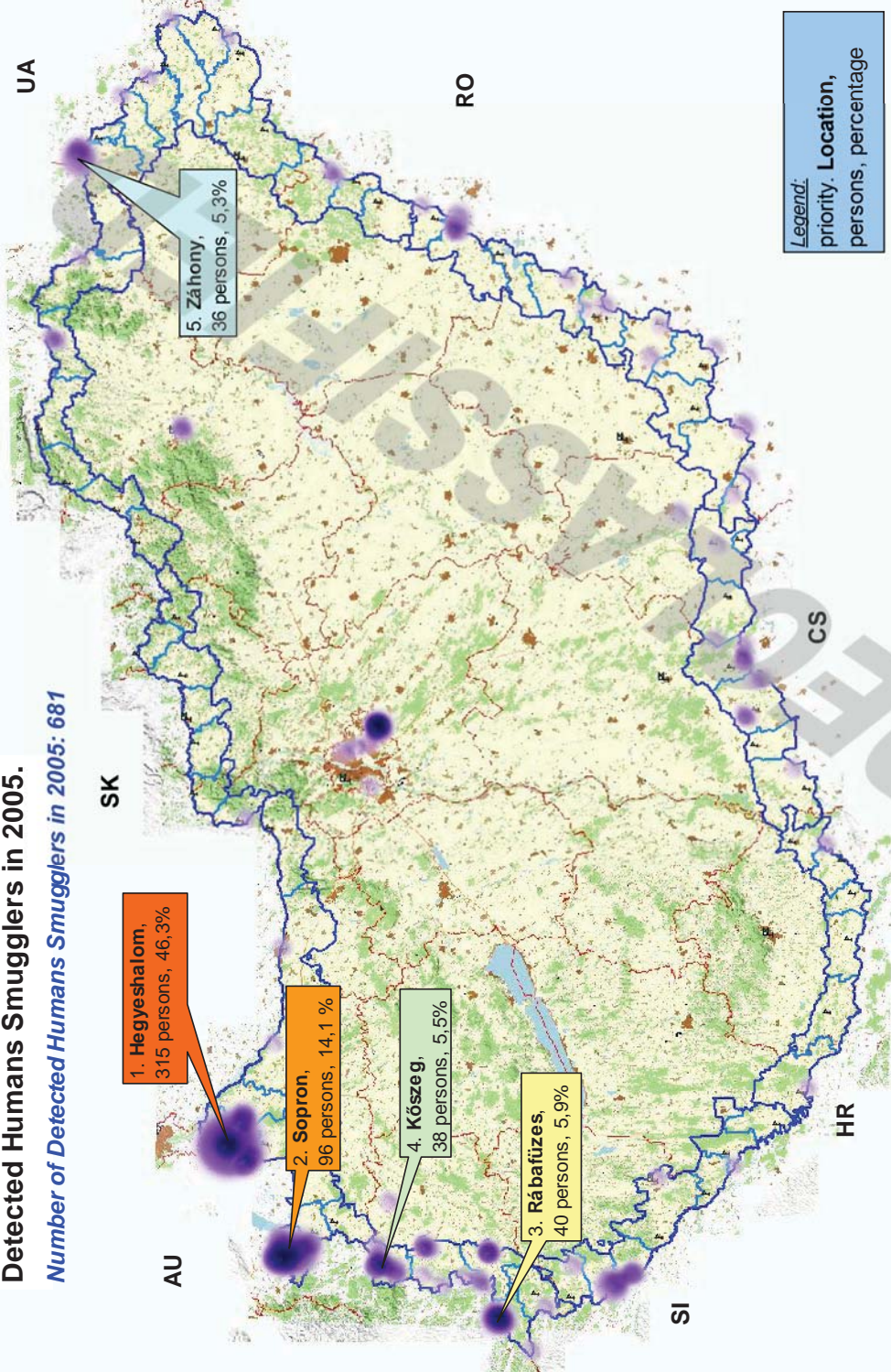
Illegal Acts Connected to Illegal Migration in 2005.

Number of Illegal Migrants Apprehended in 2005: 18 294



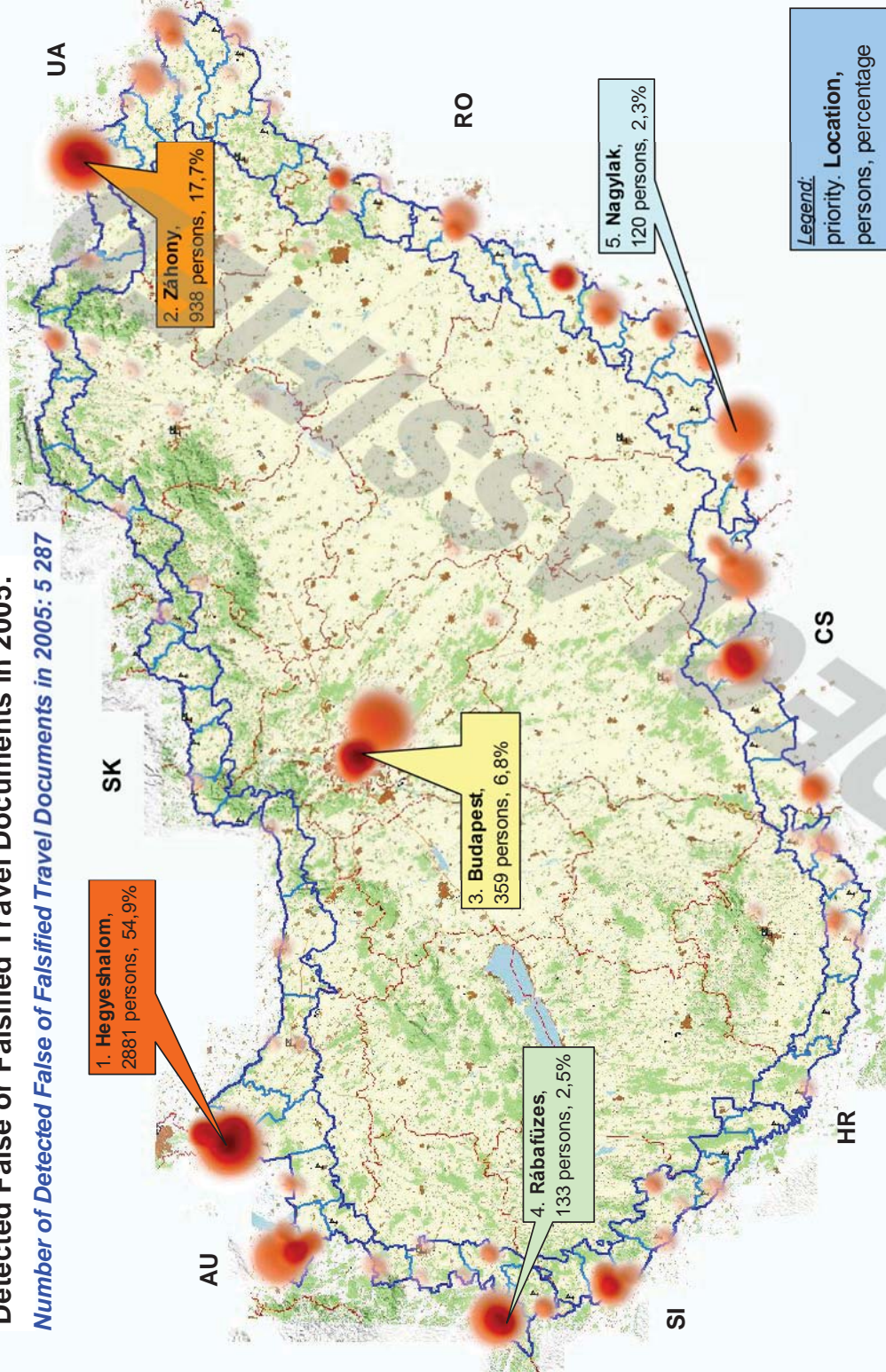
Detected Humans Smugglers in 2005.

Number of Detected Humans Smugglers in 2005: 681



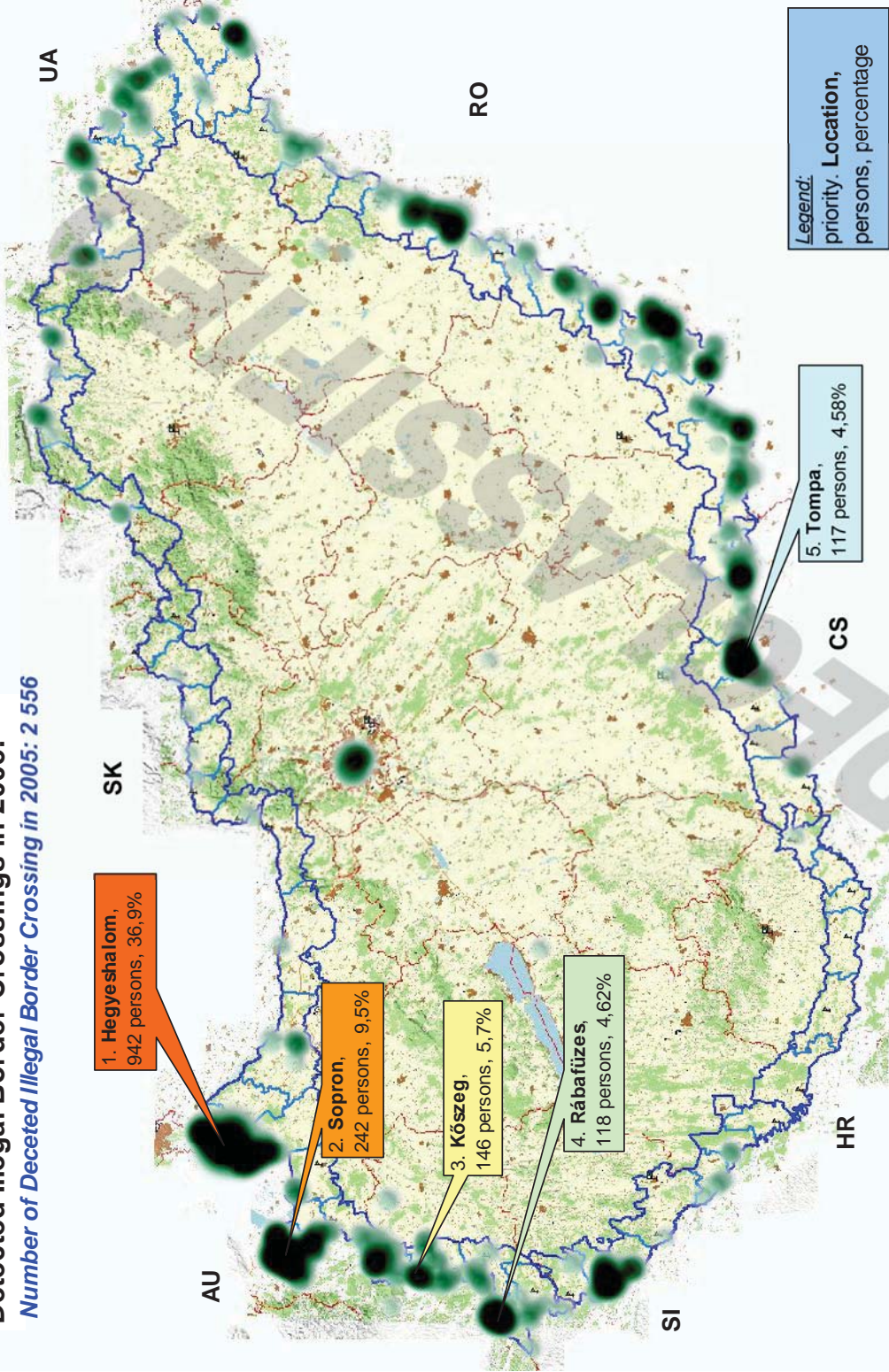
Detected False or Falsified Travel Documents in 2005.

Number of Detected False of Falsified Travel Documents in 2005: 5 287



Detected Illegal Border Crossings in 2005.

Number of Deceted Illegal Border Crossing in 2005: 2 556



1. Hegyeshalom,
942 persons, 36,9%

2. Sopron,
242 persons, 9,5%

3. Kőszeg,
146 persons, 5,7%

4. Rábafüzes,
118 persons, 4,62%

5. Tompa,
117 persons, 4,58%

Legend:
priority. Location,
persons, percentage

Contraventions of Alien Policing Rules in 2005.

