



Council of the  
European Union

Brussels, 17 December 2021  
(OR. en)

---

---

**Interinstitutional File:**  
**2021/0420(COD)**

---

---

15109/21  
ADD 42

TRANS 760  
CODEC 1669  
IA 210

#### COVER NOTE

---

From:	Secretary-General of the European Commission, signed by Ms Martine DEPREZ, Director
date of receipt:	15 December 2021
To:	Mr Jeppe TRANHOLM-MIKKELSEN, Secretary-General of the Council of the European Union

---

No. Cion doc.:	COM(2021) 812 final - ANNEX
Subject:	ANNEX to the Proposal for a REGULATION OF THE EUROPEAN PARLIAMENT AND OF THE COUNCIL <b>on Union guidelines for the development of the trans-European transport network, amending Regulation (EU) 2021/1153 and Regulation (EU) No 913/2010 and repealing Regulation (EU) 1315/2013</b>

---

Delegations will find attached document COM(2021) 812 final - ANNEX.

---

Encl.: COM(2021) 812 final - ANNEX



Strasbourg, 14.12.2021  
COM(2021) 812 final

ANNEX 4 – PART 4/12

**ANNEX**

**to the**

**Proposal for a  
REGULATION OF THE EUROPEAN PARLIAMENT AND OF THE COUNCIL**

**on Union guidelines for the development of the trans-European transport network,  
amending Regulation (EU) 2021/1153 and Regulation (EU) No 913/2010 and repealing  
Regulation (EU) 1315/2013**

{SEC(2021) 435 final} - {SWD(2021) 471 final} - {SWD(2021) 472 final} -  
{SWD(2021) 473 final}

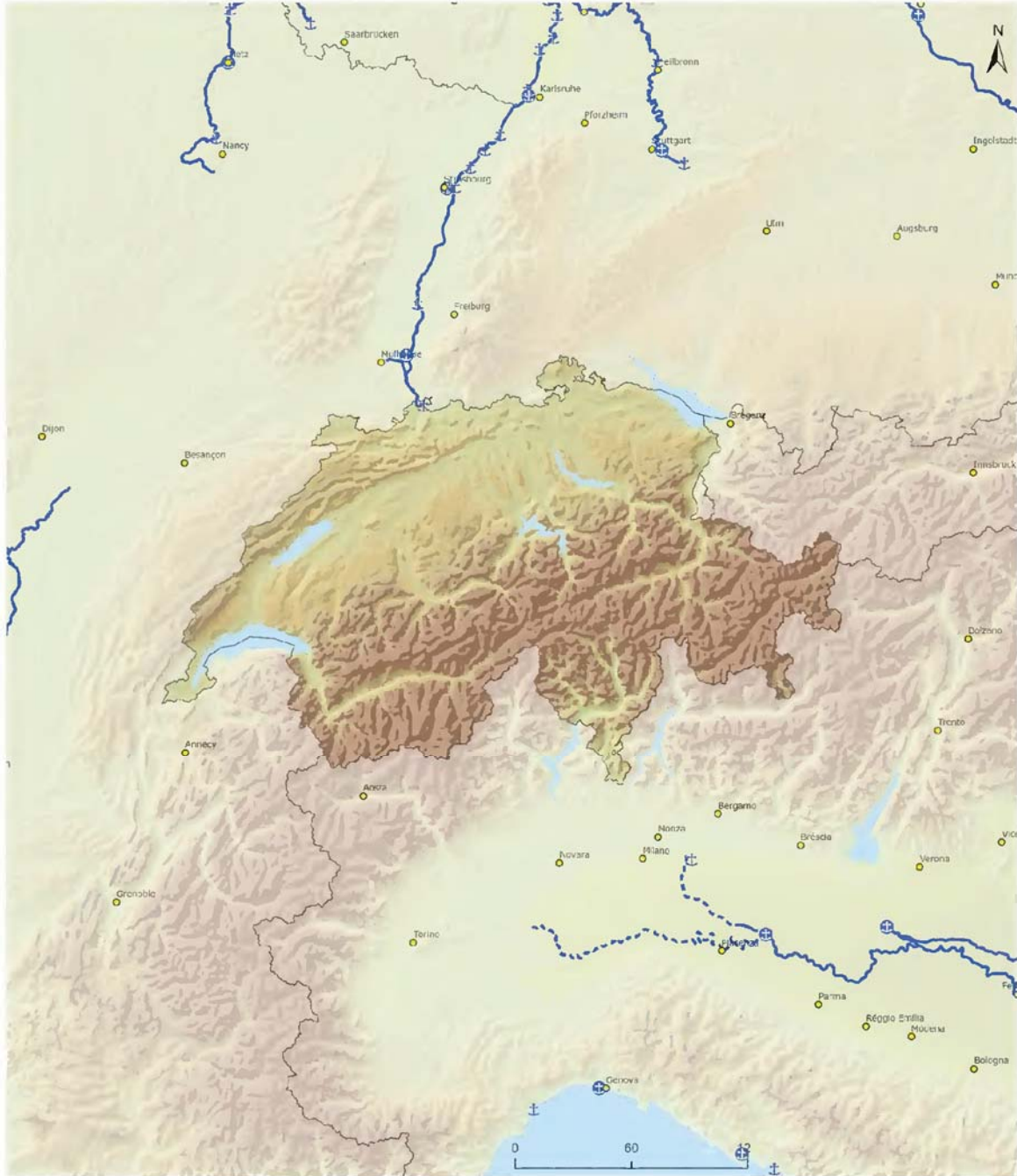
**ANNEX IV**

**INDICATIVE MAPS OF THE TRANS-EUROPEAN TRANSPORT NETWORK  
EXTENDED TO SPECIFIC THIRD COUNTRIES**



Indicative Extension to Neighbouring Countries  
 Comprehensive & Core Networks: **Inland waterways** and ports  
 Switzerland / Liechtenstein

B



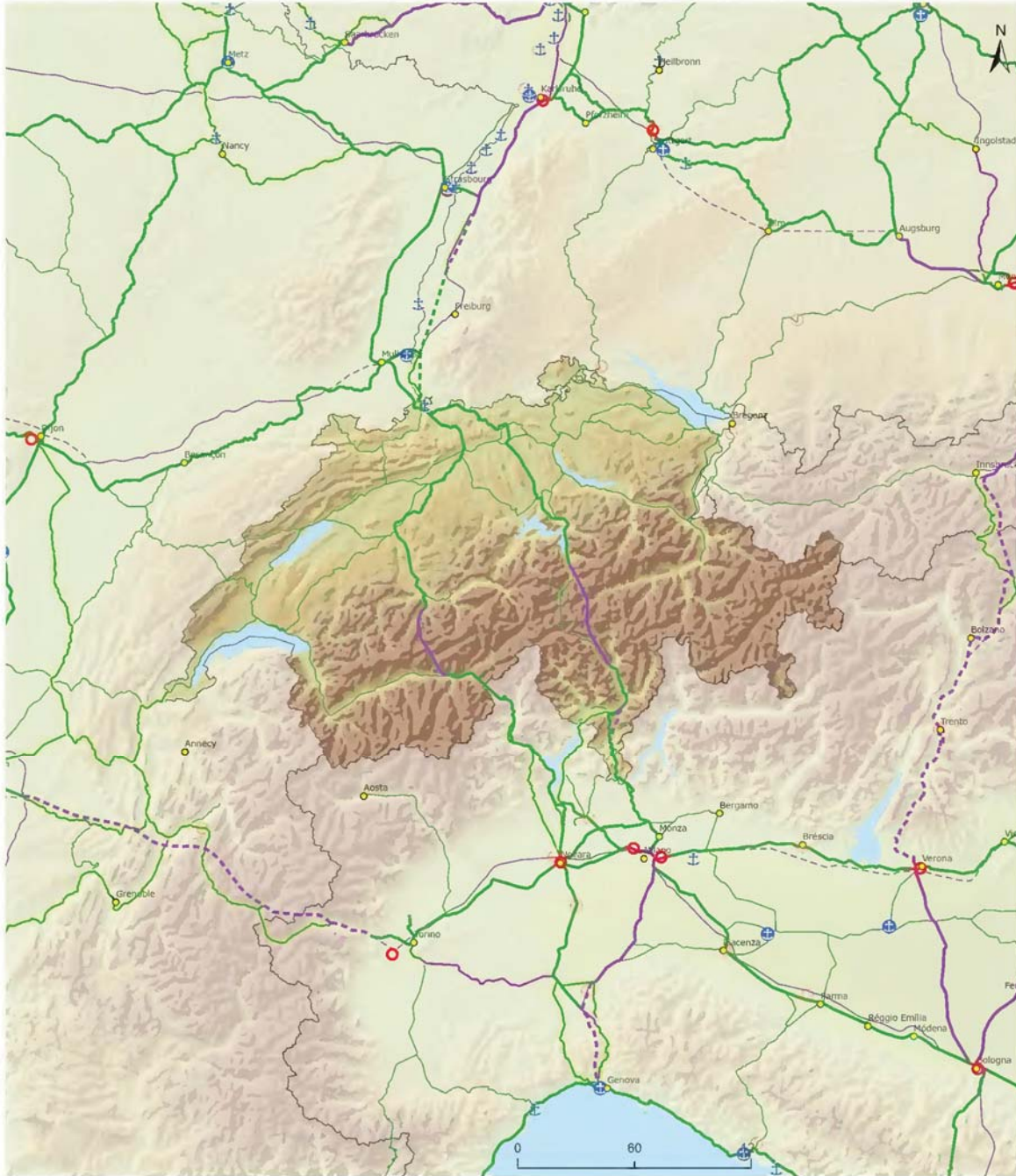
Core	Comprehensive	Core	Urban Nodes
<ul style="list-style-type: none"> <li>Inland Waterways</li> <li>Inland Waterways / New Construction</li> </ul>	<ul style="list-style-type: none"> <li>Ports</li> </ul>	<ul style="list-style-type: none"> <li>Ports</li> </ul>	<ul style="list-style-type: none"> <li>Capitals</li> <li>Urban Nodes</li> </ul>





**Indicative Extension to Neighbouring Countries**  
 Core & Comprehensive Networks: **Rail freight**, ports and rail-road terminals (RRT)  
**Switzerland / Liechtenstein**

B



Railways Core	Railways Extended Core	Railways Comprehensive	Compr	Core	Urban Nodes
<ul style="list-style-type: none"> <li>Conventional</li> <li>Conventional / New Construction</li> <li>≥ 200 km/h</li> <li>≥ 200 km/h / New Construction</li> </ul>	<ul style="list-style-type: none"> <li>Conventional</li> <li>Conventional / New Constr.</li> <li>≥ 200 km/h</li> <li>≥ 200 km/h / New Constr.</li> </ul>	<ul style="list-style-type: none"> <li>Conventional</li> <li>Conventional / New Constr.</li> <li>≥ 200 km/h</li> <li>≥ 200 km/h / New Constr.</li> <li>Projected</li> </ul>	<ul style="list-style-type: none"> <li>Ports</li> <li>RRT</li> </ul>	<ul style="list-style-type: none"> <li>Ports</li> <li>RRT</li> </ul>	<ul style="list-style-type: none"> <li>Capitals</li> <li>Urban Nodes</li> </ul>

TENtec