



Bruxelles, le 1^{er} février 2022
(OR. fr, en)

5672/22
ADD 2

MAR 19
OMI 14
ENV 77
CLIMA 38

NOTE POINT "I"

Origine: Secrétariat général du Conseil

Destinataire: Comité des représentants permanents (1^{re} partie)

N° doc. préc.: 5295/3/22 REV 3

Objet: Préparation d'OMI/MEPC 78 (Londres, 6-10 juin 2022) – Projet de soumission des États membres et de la Commission à la 78^e réunion du Comité de la protection du milieu marin de l'Organisation maritime internationale concernant une proposition pour la désignation de la mer Méditerranée dans son ensemble en tant que zone de contrôle des émissions d'oxydes de soufre

– *Approbation*

Les délégations trouveront ci-joint Annexe 2.

ANNEX 2

Description of the proposed Med SO_x ECA

The area of application of the proposed Med SO_x ECA includes waters internal to the Mediterranean Sea, as defined by the International Hydrographic Organization.

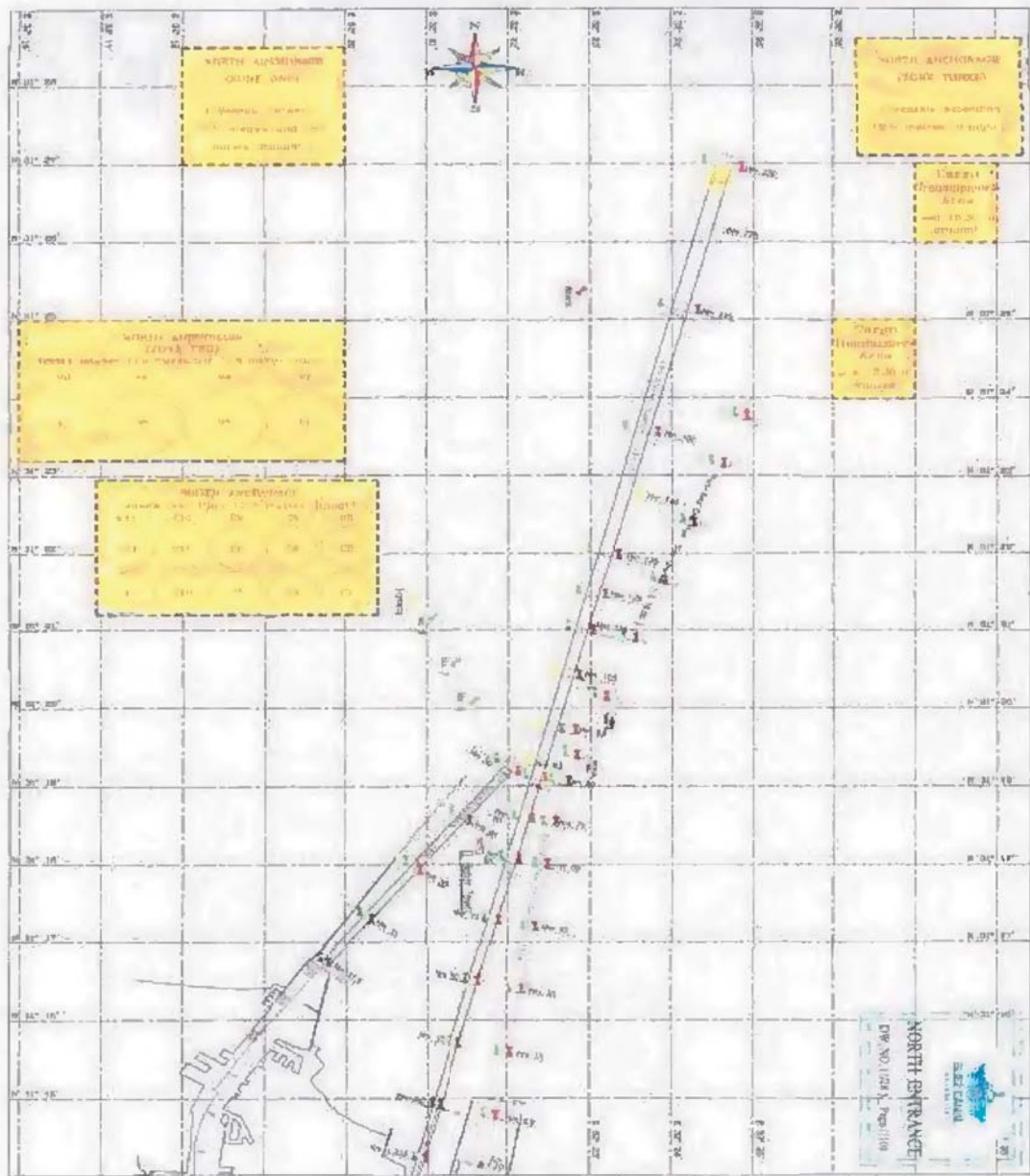
Specifically, the proposed Med SO_x ECA includes all waters bounded by the coasts of Europe, Africa, and Asia, and

- a. the western entrance to the Straits of Gibraltar, defined as a line joining the extremities of Cape Trafalgar, Spain (36°11'N, 6°02'W) and Cape Spartel, Morocco (35°48'N, 5°55'W);
- b. the Dardanelles, defined as a line joining Mehmetcik Burnu¹ (40°03'N, 26°11'E) and Kumkale Burnu (40°01'N, 26°12'E); and
- c. the northern entrance to the Suez Canal ~~excluding its waiting the area enclosed by geodesic lines connecting points 1-4 with the following coordinates~~ ~~defined as a line joining the following points with coordinates (~~31°29'N~~, ~~32°16'E~~), (~~31°29'N~~, ~~32°28'25"E~~), (~~31°14'N~~, ~~32°28'25"E~~) and (~~31°14'N~~, ~~32°16'E~~), as set out in the map below² where points 1-4 are located at its extremes clock wise starting from the top left)~~);

Point	Latitude	Longitude
1	31°29'N	32°16'E
2	31°29'N	32°28'25"E
3	31°14'N	32°28'25"E
4	31°14'N	32°16'E

¹ Burnu (Turkish) = Cape.

²[https://urldefense.com/v3/__https://www.suezcanal.gov.eg/FlipPDFFiles/RulesOfNavigation/index.html__;!!D0xrgLBm!XrtXkynNE3moezr7iO-t5xglb4Z4j5BUdSKJC-T9AaWvhS6B2tMCKn7Ge5fLNtNcKr-gg\\$](https://urldefense.com/v3/__https://www.suezcanal.gov.eg/FlipPDFFiles/RulesOfNavigation/index.html__;!!D0xrgLBm!XrtXkynNE3moezr7iO-t5xglb4Z4j5BUdSKJC-T9AaWvhS6B2tMCKn7Ge5fLNtNcKr-gg$) (waiting areas are described in page 22 and 23)



(مناظر إنتظار السفن الشمالية لقناة السويس)