



Brussels, 10 April 2025
(OR. en)

7897/25

COMPET 247
IND 106
MI 205
RECH 146
INTER-REP 44

NOTE

From:	General Secretariat of the Council
To:	Delegations
Subject:	Presentation by Brainport Development NV (agenda item 2.) at the Working Party on Competitiveness and Growth (Industry) on 10 April 2025

Delegations will find attached a presentation by Brainport Development NV, with a view to the discussion by the Working Party on Competitiveness and Growth (Industry) at its meeting on 10 April 2025.

This document contains a presentation by an external stakeholder and the views expressed therein are solely those of the third party it originates from. This document cannot be regarded as stating an official position of the Council. It does not reflect the views of the Council or of its members.



Increasing European Competitiveness

April 10th, 10:00-10:15



Naomie Verstraeten

Chief Innovation and Technology

Brainport Development

www.brainporteindhoven.com



Brainport Eindhoven

TRIPLE HELIX
COLLABORATION

HIGH-TECH
MANUFACTURING

TECHNOLOGICAL
LEADERSHIP

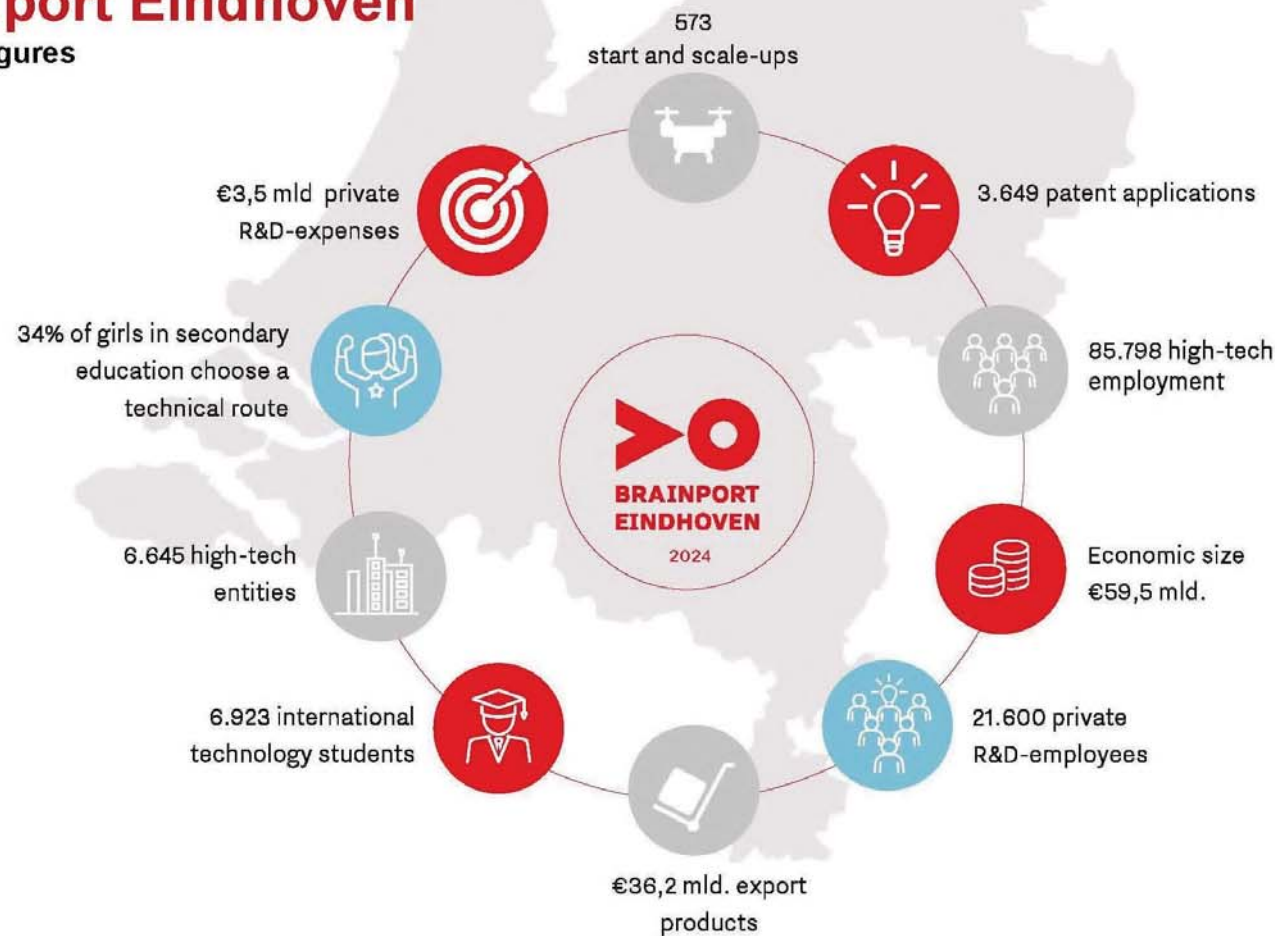
OPEN
INNOVATION

REGIONAL
AND GLOBAL

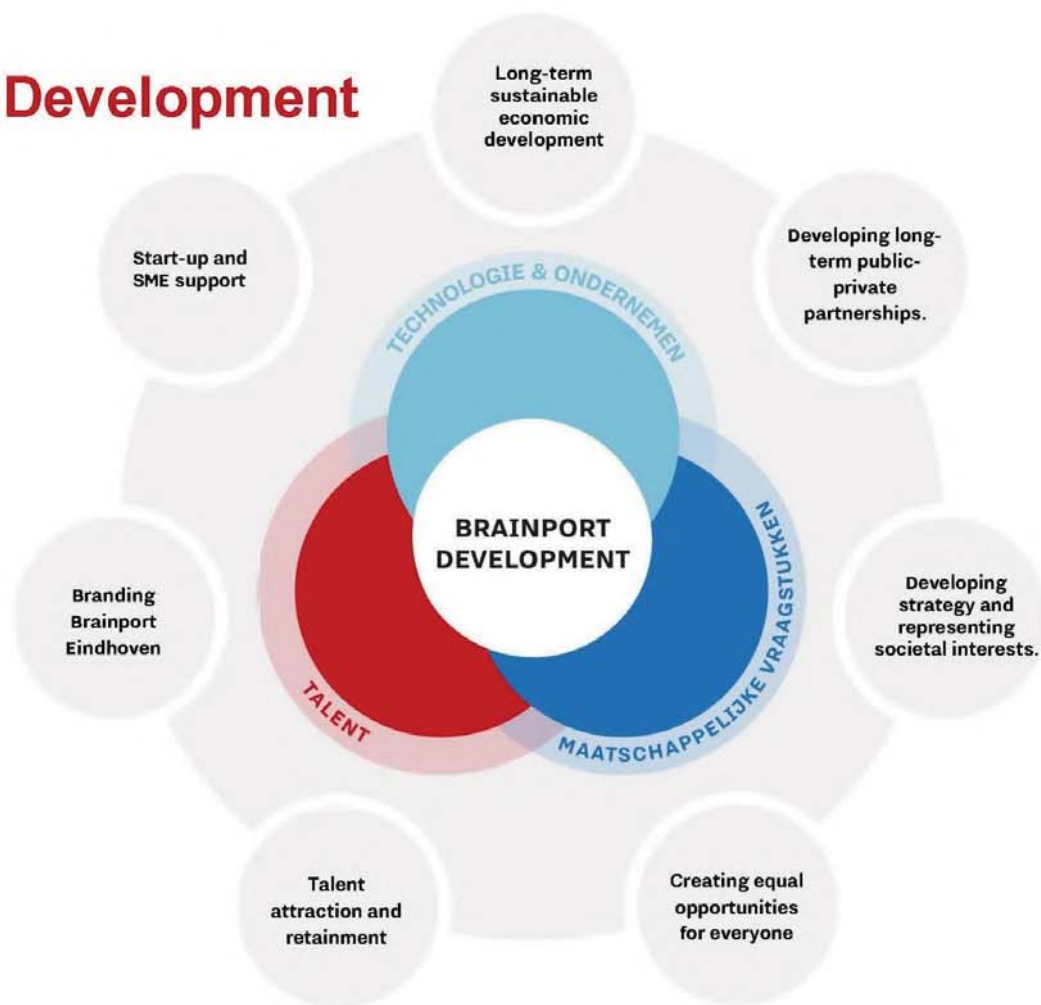


Brainport Eindhoven

Facts & figures



Brainport Development



Focus Technologies and Markets



Program-development Technology & Markets



Technology value-chain mapping

We have access to data of over 317M entities worldwide.

- 66M+ entities in Europe
- 136M+ entities in Asia
- 56M+ entities in North-America



- 420K+ entities regarding Semiconductors
- 280K+ entities regarding Medical Equipment & Supplies

Enriched company profiles for 10,821,387 companies (and counting)

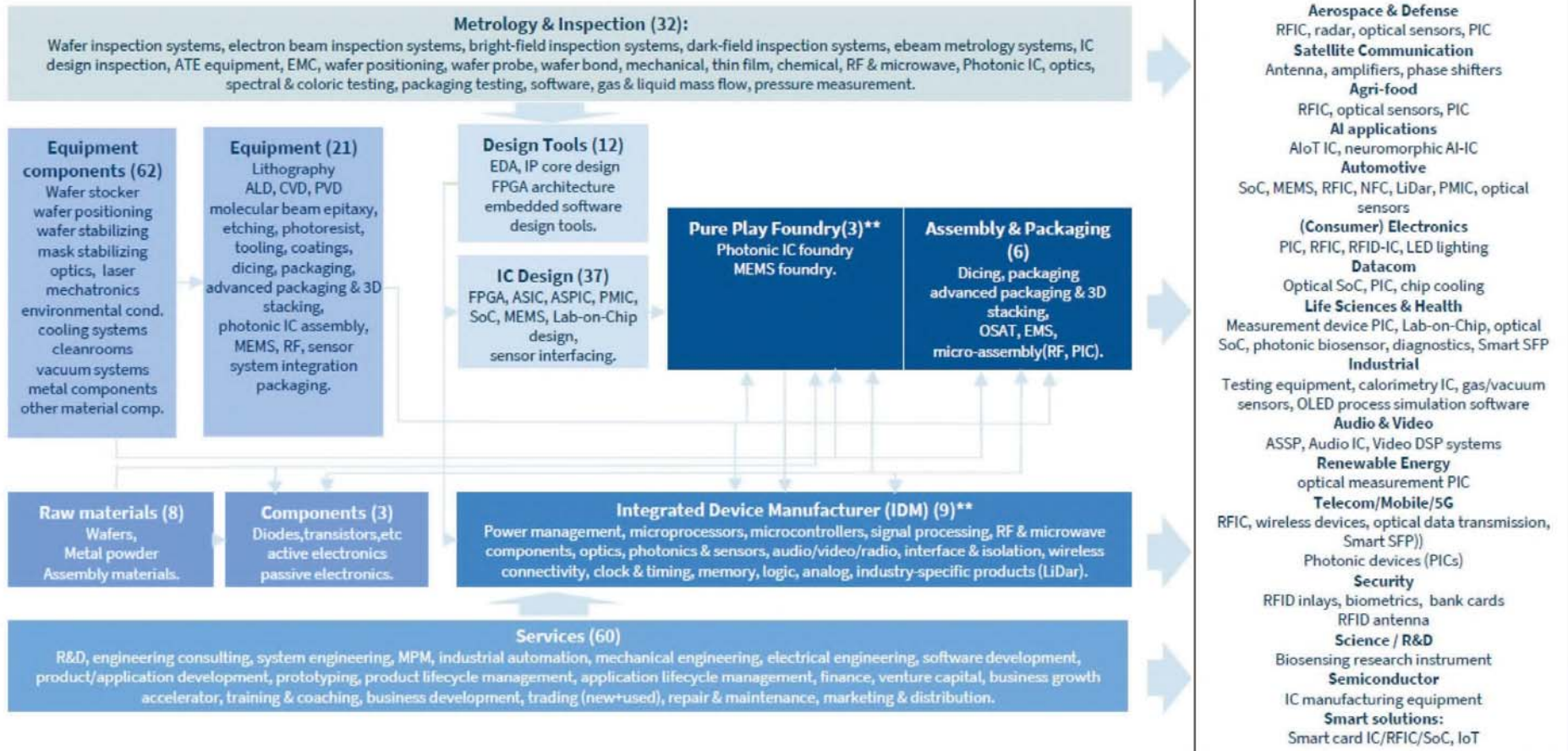
- Technology classification and description (in-house developed taxonomy)
- Company financials
- Intellectual Property (IP)
- Company relations and partnerships
- Semi-automated process



Mixed research approach for Business Intelligence



Dutch semicon value chain



Metrology & Inspection (equipment & services): 32 organisations 4,031 FTE €2.0 bn Revenue					1. <u>ThermoFisher Scientific</u> 2. <u>ASML**</u> 3. <u>Malvern Panalytical</u> 4. <u>Sioux Technologies</u> 5. <u>Salland Engineering Electronics</u>	Applications 28 organisations 2739 FTE €556.7 m Revenue 1. <u>Thales Netherlands</u> 2. <u>AME</u> 3. <u>Aimvalley</u> 4. <u>Sintecs</u> 5. <u>Morphotonics</u>
Equipment Components 62 organisations 9,311 FTE €3.1 bn Revenue 1. <u>VDL ETG</u> 2. <u>Prodrive technologies</u> 3. <u>NTS</u> 4. <u>Frencken</u> 5. <u>Neways Electronics</u>	Equipment 21 organisations 18,247 FTE €13.7 bn Revenue 1. <u>ASML**</u> 2. <u>Kulicke & Soffa Liteq</u> 3. <u>ASM International</u> 4. <u>BESI</u> 5. <u>IHI Hauzer Techno Coating</u>	Design Tools 12 organisations 316 FTE €56.4 m Revenue 1. <u>Technolution</u> 2. <u>Riscure</u> 3. <u>Siemens EDA</u> 4. <u>Synopsys Software NL</u> 5. <u>Intrinsic ID</u>	Pure Play Foundry 3 organisations 246 FTE €120.0 m Revenue 1. <u>Philips Innovation Services</u> 2. <u>Smart Photonics</u> 3. <u>Nanophab</u>	Assembly & Packaging 6 organisations 113 FTE €24.9 m Revenue 1. <u>Sencio</u> 2. <u>Phuntronix</u> 3. <u>Phix</u> 4. <u>Elect</u> 5. <u>Sempro Technologies</u>		
Raw Materials 8 organisations 151 FTE €54.2 m Revenue 1. <u>Alpha Assembly Solutions</u> 2. <u>POLYFLUOR PLASTICS</u> 3. <u>MAT-TECH</u> 4. <u>Mintres</u> 5. <u>Hemabo</u>	Components 3 organisations 554 FTE €162.1 m Revenue 1. <u>Sensata technologies</u> 2. <u>Nexperia</u> 3. <u>Epicor components</u>	IC Design 37 organisations 890 FTE €208.4 m Revenue 1. <u>Dialog Semiconductor</u> 2. <u>Qualcomm Technologies</u> 3. <u>SiTime</u> 4. <u>Goodix Technologies</u> 5. <u>Rambus</u>	Integrated Device manufacturer (IDM) 9 organisations 2,597 FTE €1.1 bn Revenue 1. <u>NXP</u> 2. <u>Ampleon</u> 3. <u>Broadcom NL</u> 4. <u>Qorvo NL</u> 5. <u>Analog Devices</u>			
Services 60 organisations 3,373 FTE €923.9 m Revenue					1. <u>Simac Techniek</u> 2. <u>Festo</u> 3. <u>Benchmark Electronics</u> 4. <u>Teledyne Dalsa</u> 5. <u>WePro Group</u>	 <

* Top 5 sample organisations are ranked by NL revenue in 2021; Foreign companies are underlined.

** All organisations are classified in one of these value chain segments, with the exception of ASML, for which a distinction is made between Equipment and Metrology and Inspection activities.



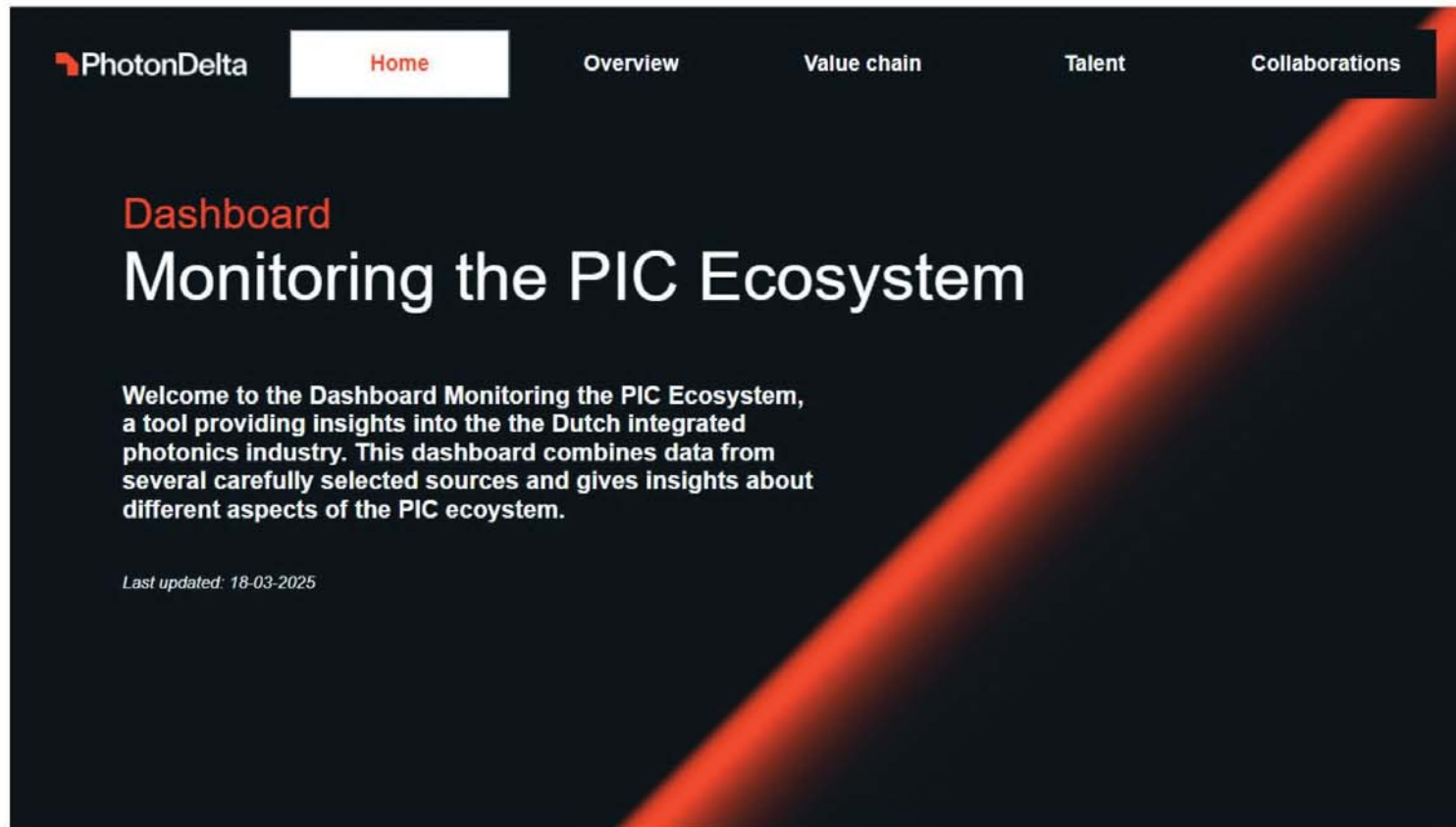
Business Intelligence & Monitoring

Integrated Photonics

PhotonDelta

- In 2022, secured €1.1 billion in public and private investment. This includes €470 million in funding obtained through National Growth Fund
- Activities
 - Innovation
 - Internationalisation
 - Funding
 - Talent

PIC Ecosystem dashboard



Human Capital dashboard



The screenshot shows the PhotonDelta Human Capital Dashboard. At the top, there is a navigation bar with a red logo and five buttons: Home, Number of employees, Distribution of employees by levels, Student hotspots, and Talent hotspots. The main content area is divided into two columns. The left column features the title 'PhotonDelta Human Capital Dashboard' in large orange text, followed by a welcome message: 'Welcome to the Human Capital Dashboard, a tool providing insights into the workforce landscape within the integrated photonics industry. This dashboard combines data from several carefully selected sources and gives insights about different aspects of the workforce landscape. This helps us to assess the current workforce landscape and predict future talent needs. On this page you can find an overview of the data that can be found in the dashboard.' The right column contains three sections: 'Number of employees & distribution employees' (describing a 2023 survey), 'Student hotspots' (defining student hotspots based on related studies), and 'Talent hotspots' (defining talent hotspots based on public data). A footer note states 'Last updated: 19-04-2024'.

PhotonDelta
Human Capital
Dashboard

Welcome to the Human Capital Dashboard, a tool providing insights into the workforce landscape within the integrated photonics industry. This dashboard combines data from several carefully selected sources and gives insights about different aspects of the workforce landscape. This helps us to assess the current workforce landscape and predict future talent needs. On this page you can find an overview of the data that can be found in the dashboard.

Number of employees & distribution employees
In 2023 a Human Capital survey was shared with companies within the PhotonDelta ecosystem to capture vital details about integrated photonics workforce requirements. Fifteen companies actively engaged in the survey, and out of those, ten successfully completed it, contributing valuable information to our analysis.

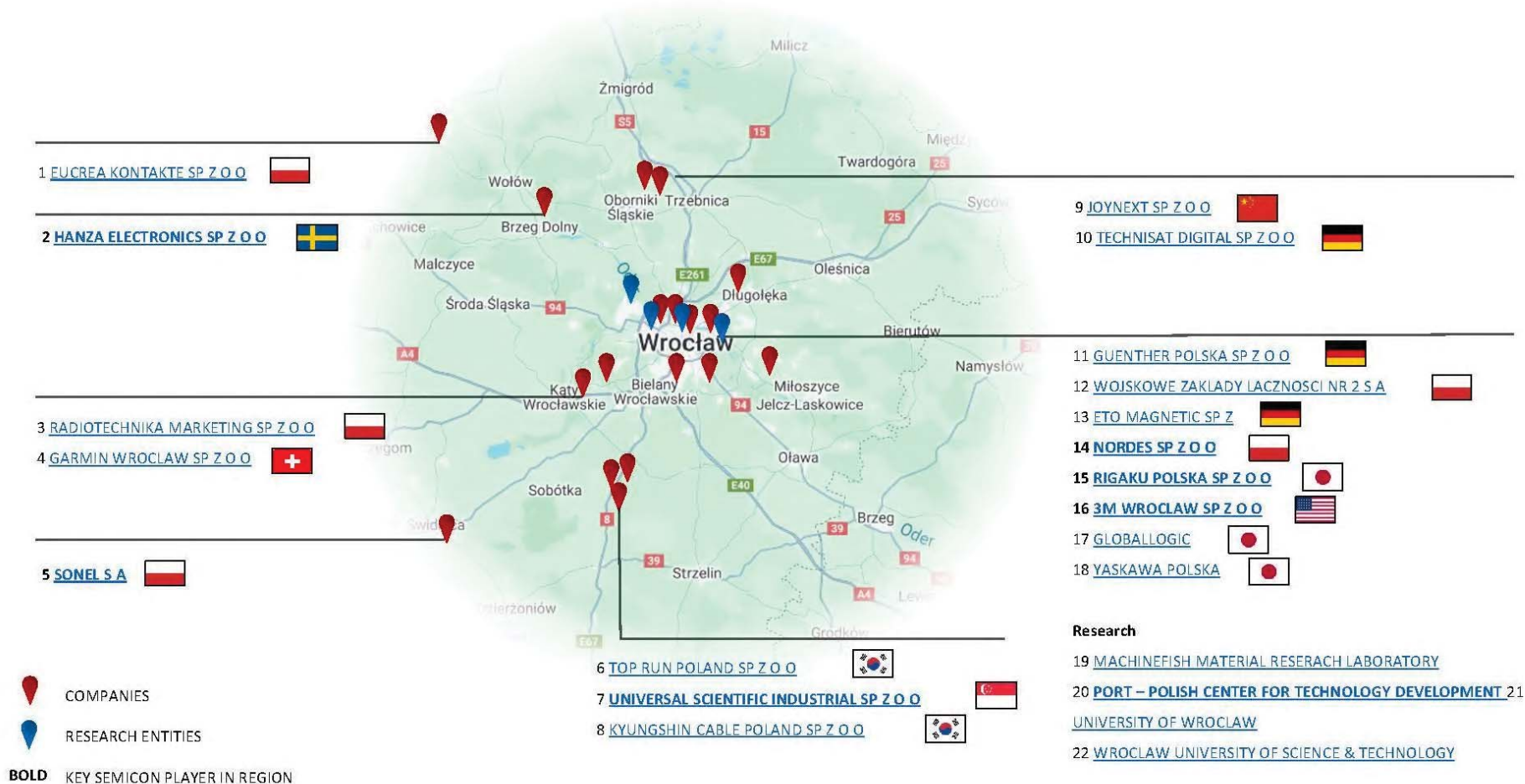
- When you see references to "survey data", it pertains to the raw responses obtained directly from companies through the questionnaire. When you encounter references to "data combined with annual report," it signifies a synergistic approach where survey data is harmonized with data collected for the annual report of 2023 of PhotonDelta.
- Our research focuses specifically on the integrated photonics domain. When interpreting the data, it's important to bear in mind that questions about the total number of full-time equivalents (FTEs) refer exclusively to those working within integrated photonics.
- The survey represents a diverse array of companies throughout the supply chain, covering companies in design, manufacturing, packaging and application development, providing a comprehensive view of the workforce landscape. It's worth noting that while all types of companies are included, the personnel requirements may not be proportional across the various stages of the supply chain.

Student hotspots
To define student hotspots, the number of related studies for integrated photonics is considered. Using keywords, the name and description were searched for relevant studies using studyportals as sources. Only English-language studies are included in this source.

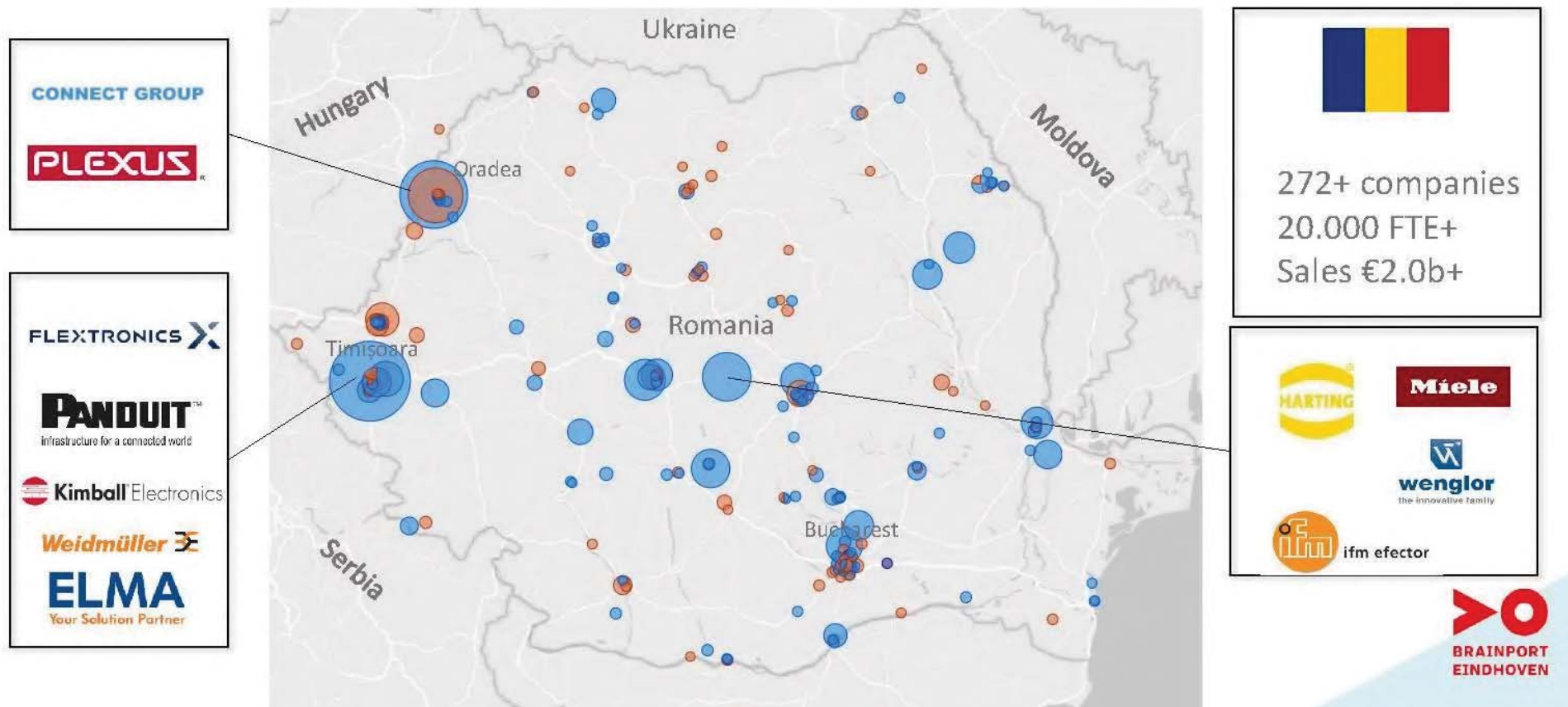
Talent hotspots
To assess where talent in the field of integrated photonics is located, we used public data to define talent hotspots. By conducting a patent and scholar works analysis using lens.org as a source, these hotspots were identified.

Last updated: 19-04-2024

HIGH-TECH & ELECTRONIC MANUFACTURING COMPANIES [Wroclaw +50km]



Semiconductor/Electronics Clusters In Romania





Thank you



Naomie Verstraeten

Chief Innovation and Technology

(E): n.verstraeten@brainportdevelopment.nl

Brainport Development

www.brainporteindhoven.com

