

IDA20 Retrospective: Emerging Findings

Flexibility, Agility, and Resilience to Deliver Impact in Times of Crisis

Outline

1. Context of IDA20
2. Financial Delivery
3. Results and Impact
4. Questions for Discussion
5. Annexes



A vibrant outdoor market scene with people and baskets of produce. In the foreground, a woman in a white headscarf and patterned skirt sits amidst baskets of yellow tubers. To her right, another woman in a pink headscarf and yellow patterned skirt stands. In the background, a man in a blue shirt is visible. The market is filled with numerous baskets of red onions and yellow tubers, set against a backdrop of a rustic mud-brick building. The scene is brightly lit, suggesting a sunny day.

Context

IDA20 responded with speed, flexibility, and innovation to clients' heightened financing needs, balancing short-term crisis response with continued investment in long-term development priorities.



Poly-crisis

- Once-in-a-century crisis caused by the COVID-19 pandemic, pushing millions into extreme poverty
- Geopolitical tensions and prolonged economic slowdown across the globe
- Food insecurity and energy market shocks, with disproportionate impact on the poorest
- Increased vulnerability as a result of more frequent natural disasters
- Higher levels of fragility, conflict, and violence (FCV)

How IDA Delivered Results in a time of crisis



Flexibility

Adaptability and Innovation



Agility

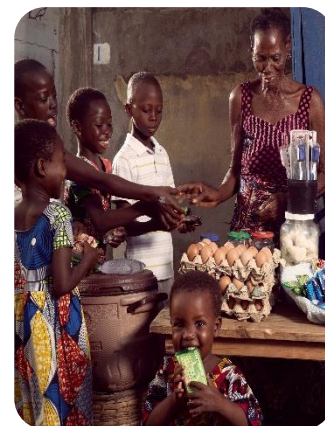
Speed and Efficiency



Resilience

Sustaining Impact

Impact at Scale



Partnerships

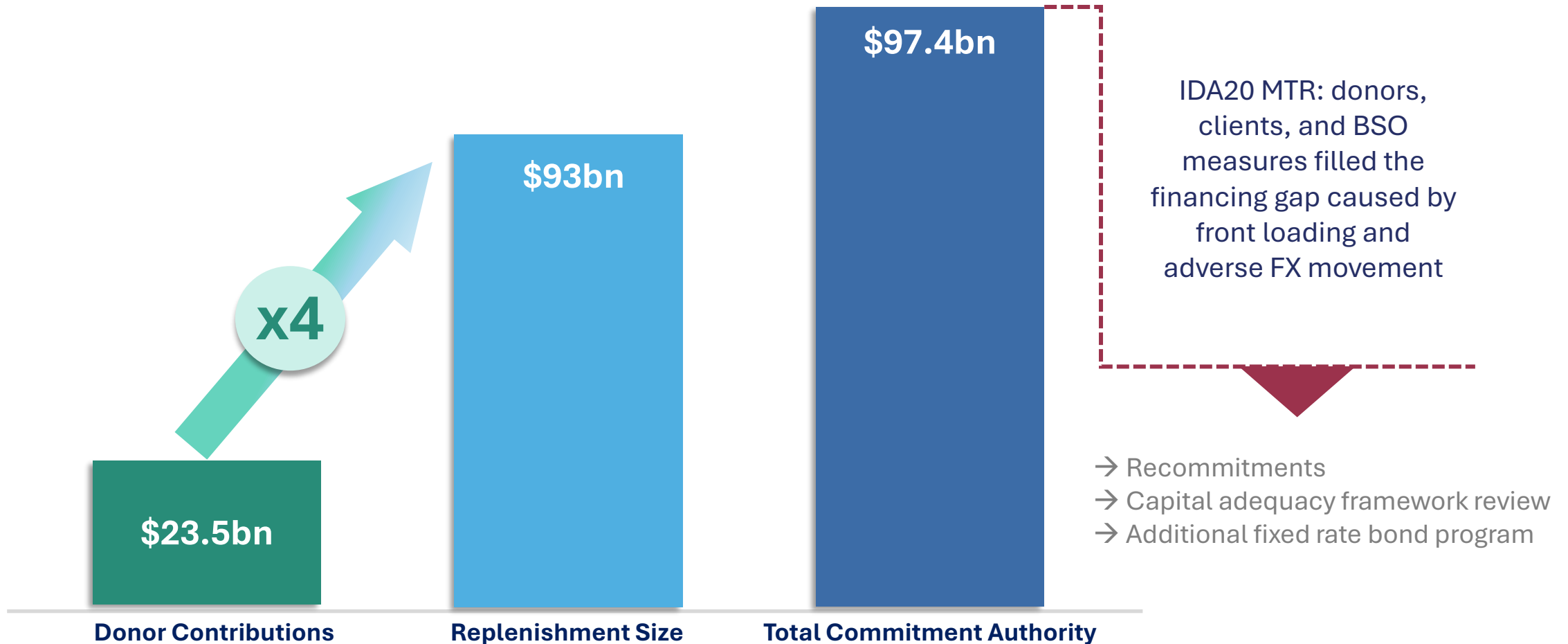


Financial Delivery

Record \$97.4b in total commitments authority and \$3.2b in PSW investments.

IDA20 delivered record levels of financing, prioritizing the poorest and the most vulnerable while strengthening implementation and ensuring efficient use of resources.

Record \$97.4b in commitments in IDA20; made possible by IDA's leverage, strong donor and client support, and BSO measures



Notes:

- The IDA20 total (\$97.4bn) includes \$0.46bn in recommitments by IDA graduates. It excludes \$1.2bn IDA19 grandfathered operations approved in FY23 and PSW commitments. It also excludes CRW+, introduced to help close the IDA20 financing gap, as well as the Special Program for Ukraine and Moldova Recovery (SPUR). Together, these amounted to about \$0.6bn in CRW+ and \$6.1bn in SPUR commitments.



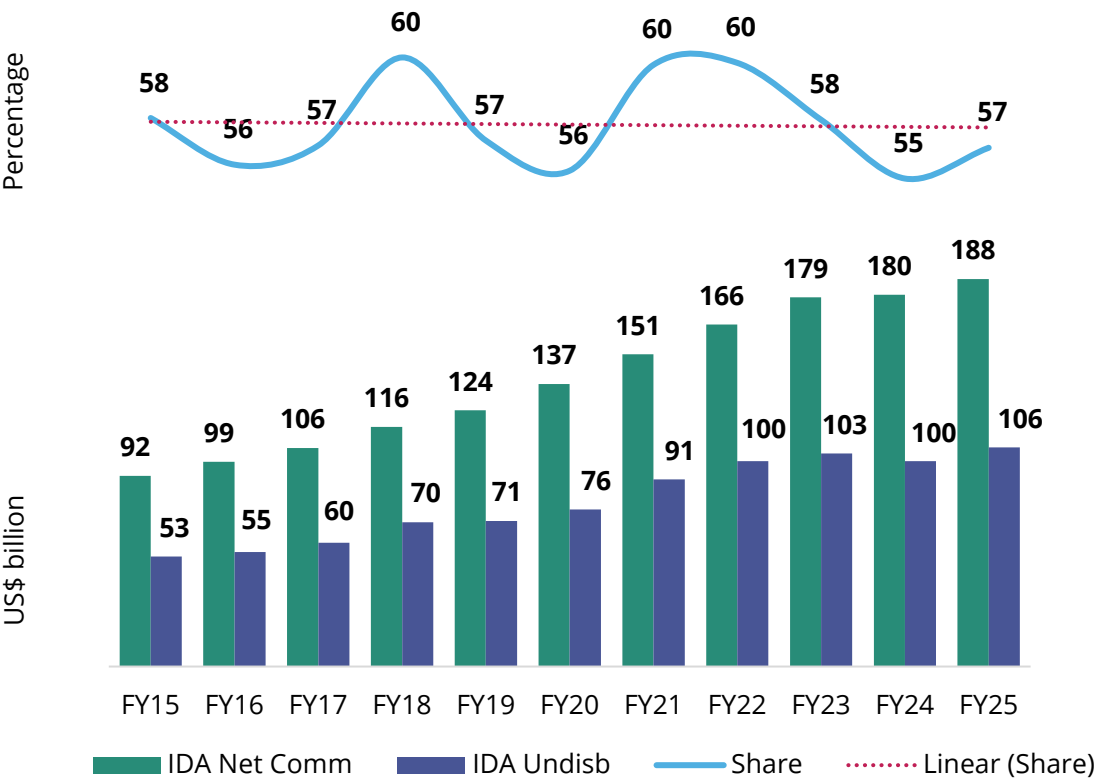
IDA

International Development
Association
WORLD BANK GROUP

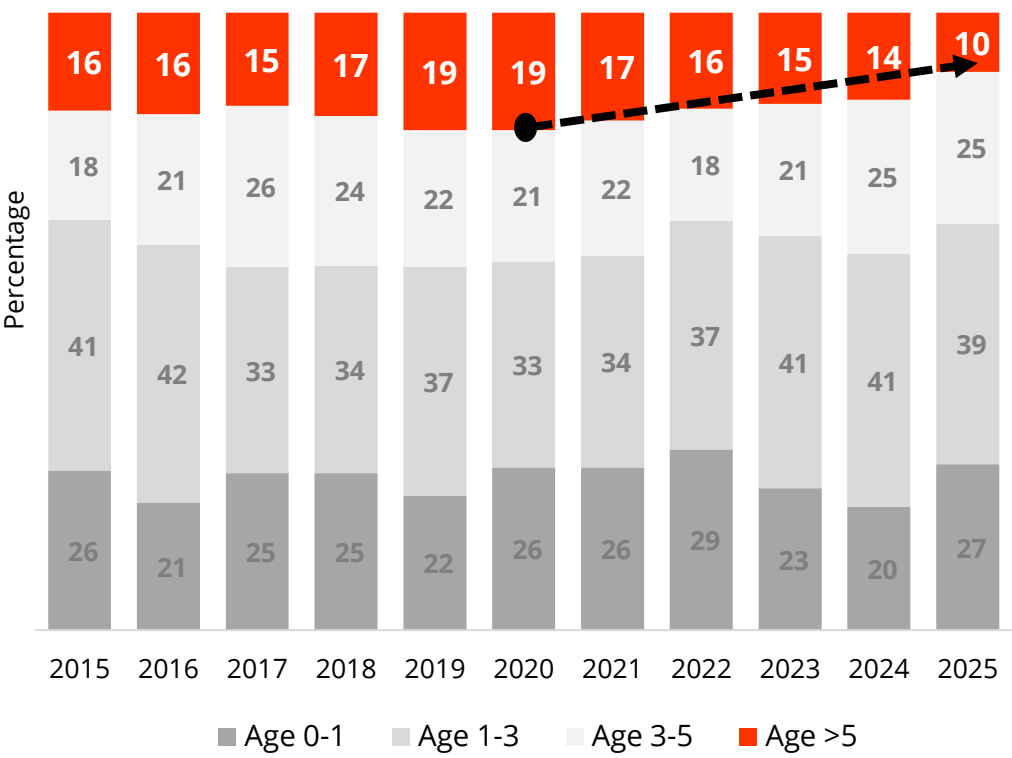
Borrowers sustained strong implementation ...

As net commitments grow, the share of undisbursed balance remained stable. For portfolio >5 years, undisbursed balances show a declining trend

Share of undisbursed balance over net commitments



IDA Undisbursed Balance Share by portfolio age



www.parlament.gv.at

III-279 der Beilagen XXVIII. GP - Bericht - Beilage IDA-20 Teil 3



Results and Impact

IDA continued its strong track record of delivering results leading to impact at scale.

IDA20 delivered results for hundreds of millions of people around the globe and met or exceeded nearly 90% of targets.








IDA

International Development
Association
WORLD BANK GROUP

IDA20 Results Spotlights

IDA20 continues its long track record of delivering results to improve people's lives

IDA RMS Indicator		Unit	IDA18	IDA19	IDA20	IDA 18-20 cumulative
	People provided with new or improved electricity service	Millions of people	26.17	24.35	54.49	105.02
	Beneficiaries in IDA countries of job-focused interventions	Millions of people	25.44	26.48	36.37	88.29
	Beneficiaries of social safety net programs	Millions of people	58.79	170.10	122.41	351.30
	People provided with enhanced access to broadband internet	Millions of people	<i>n.a.*</i>	47.10	138.38	185.48
	Generation capacity of renewable energy	Gigawatt	7.40	3.99	11.61	23.00

III-279 der Beilagen XXVIII. GP - Bericht - Beilage IDA-20 Teil 3

* Indicator newly introduced in IDA19.

IDA20 Results Stories

Examples of Transformational Operations Financed in IDA20



Flexibility



Agility



Resilience



Partnership

Côte d'Ivoire



First of its kind - debt-for-development swap

under the Third Investment for Growth DPF: (€286m in IDA credit and €500m in PBG) -- linking debt management with measurable development in education.

Democratic Republic of Congo

Inga 3 Development Program: Prepare the ground for DRC's largest hydropower dam. Aligned with M-300 and national goals to triple energy access, Phase 1 focuses on local infrastructure and jobs for 1.2 million people.

Zambia

DPF with CatDDO: Improve national, household, and private sector resilience to natural disasters and support Zambia's debt restructuring efforts under the Common Framework. Approved for \$100m.

Papua New Guinea

Learning Enhancement and Access Project:

Improve learning outcomes of 375,000 underserved primary students. One of the largest education investments in PNG history, \$100m IDA, \$60m co-financing.

Tanzania

Productive Social Safety Net Project

(\$200m additional financing): Improved access to income-earning opportunities and socio-economic services for poor households, reaching more than 5 million people.

Eastern and Southern Africa

Accelerating Sustainable and Clean Energy Access

Transformation MPA: Approved for \$1.69bn in 9 countries as the first phases of a multi-phase effort to boost energy access for 100 million people in 20 countries.

Burkina Faso

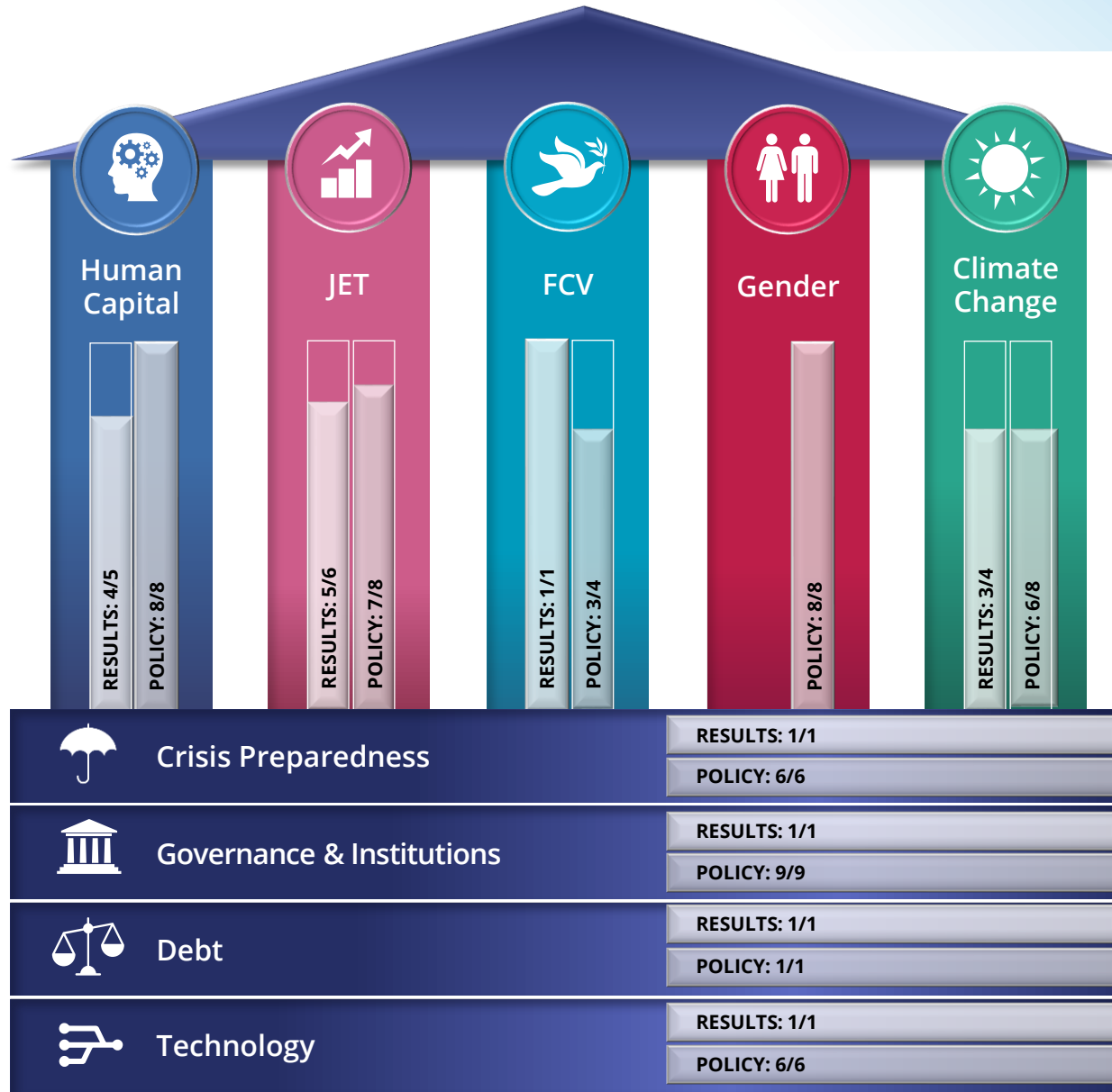
Strengthening Health System Performance and

Resilience Project: Strengthen disease surveillance and enhance HNP services for 23 million people, including IDPs and residents in 22 remote districts. Approved for \$150m.

Bangladesh

Jamuna River Substaminale Management Project (\$102m for first phase). Improve flood management and navigation to develop a river economic corridor (e.g. protect about 2,500 hectares of land from erosion and flooding; and provide an insurance scheme for about 1.2 million people).

Robust implementation of IDA20 ambitious policy package



IDA20 met nearly 90% of its targets – RMS and PCs

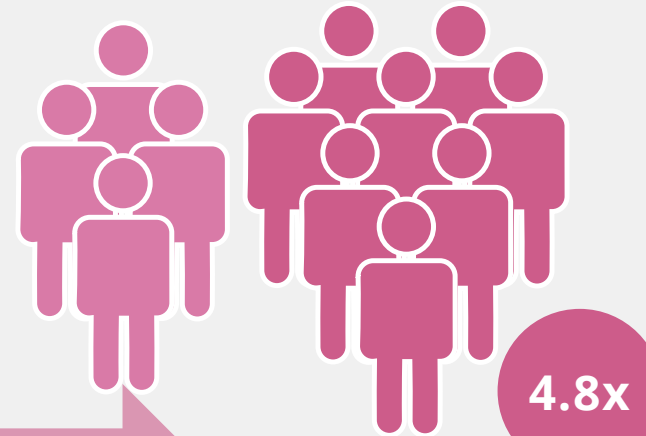
Note: Policy Commitments under Cross-cutting Issues include PCs embedded in the Special Themes, 4 standalone PCs for Governance and Institutions and 1 standalone PC for Crisis Preparedness.



JET: *Laying the foundations for jobs*
We invested to spark private sector-led growth



In IDA20, 24.6 million people and businesses were reached with financial services (Target: 5-6.5m).



EXPECTED:
5 MILLION

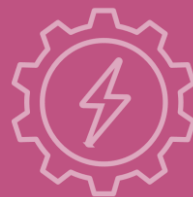
RESULT: 24.6 MILLION



21 countries
(5 FCS) received support to remove constraints or address market failures in **sectors with high growth potential.**
(Target 20, o/w 5 FCS)



III-279 der Beilagen XXVIII. GP - Bericht - Beilage IDA-20 Teil 3



Across Guinea, Liberia, and Sierra Leone, IDA delivered electricity to approximately **2.8 million people**.¹ Under IDA20, **54.5 million people globally** benefitted from new or improved electricity services.



RESULTS: 5/6

POLICY: 7/8

¹ Data as of 2023

Source: [Powering Africa: The Transformational Impact of Regional Energy Projects in West Africa](#)



CLIMATE CHANGE: *Supporting a livable planet*

We helped people and communities build resilience

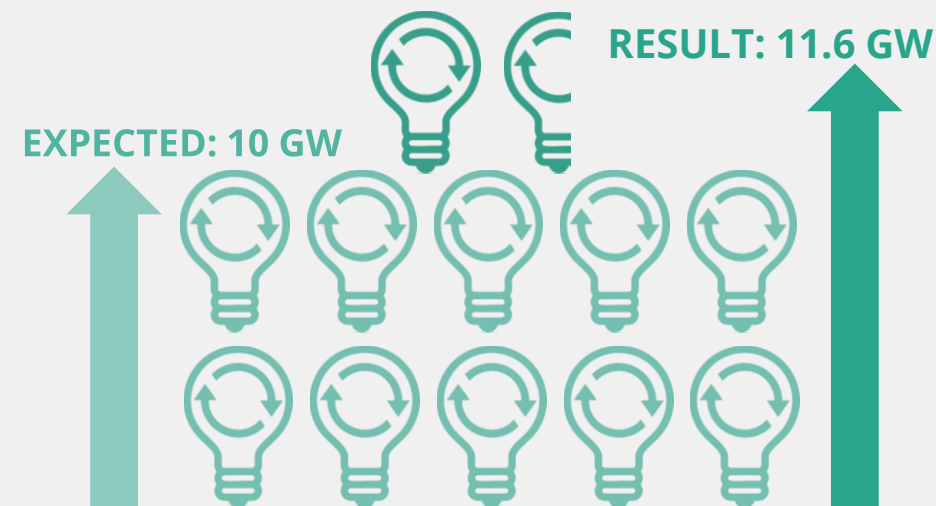


IDA20 helped **65 countries** develop climate policies and investments, including 28 countries in the **East Asia and Pacific Islands, South Asia, Africa, and the Caribbean**, that are advancing Locally Led Climate Action (LLCA) activities expected to benefit over 100 million people by 2030.¹

RESULTS: 3/4

POLICY: 6/8

IDA20 is contributing to **11.6 gigawatts** in generation capacity of renewable energy



41 countries (14 FCS) improved their crisis preparedness capacity to respond to **natural hazards and food crises** (Target 25 countries (10 FCS))

¹ Source: [Scaling Up Locally Led Climate Action to Enable Community Resilience and Equitable Climate Transitions](#)

Conclusion



- ✓ IDA20 went FAR, delivering impact at scale showing Flexibility, Agility, and Resilience
- ✓ There are also some emerging lessons for the road ahead

1

Simplification

2

FCV Strategy

3

Operational
efficiency and
effectiveness

4

OneWBG



Questions for discussion

For the Retrospective and multimedia package

1. Do the themes of IDA's flexibility, agility, and support for resilience resonate?
2. What stories and data are of most value to Participants, stakeholders, and the public?

Partnership with the private sector is critical: Private Sector Window delivery with IFC and MIGA

IFC



- 42%** of approvals in FCS
- 80%** of financing with local sponsors
- 64%** of financing with new clients
- 59** average ex-ante AIMM score for PSW approvals (higher than 52 average for IFC from FY18-FY25)
- 26%** of projects with very strong market creation impact

MIGA



- 5.2x** private capital mobilization ratio for MGF supported projects¹
- 62** average IMPACT score in IDA20 (60 in IDA19)
- 60%** of MGF approvals in FCS

1. From IDA18-IDA20, MGF mobilized over \$4.23 billion of purely commercial private capital, supported by almost \$800 million of net Board Approved MGF contributions – a mobilization of 5.2x.

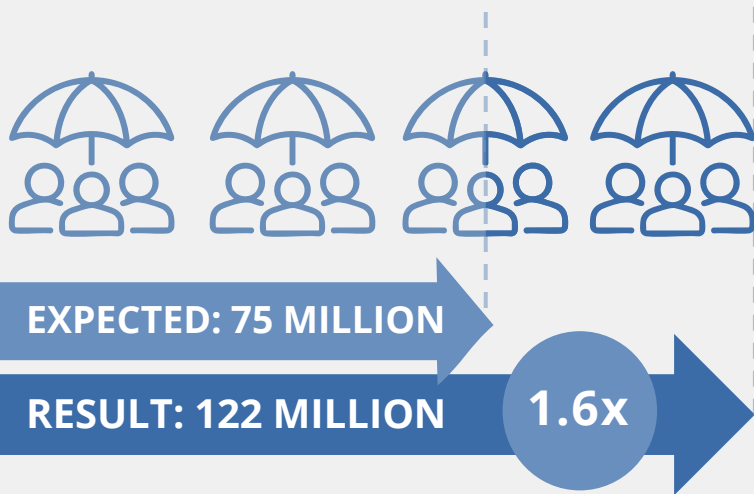


III-279 der Kommission XXVIII. GP - Bericht's Beilage IDA-20 Teil 3



HUMAN CAPITAL: *Sustained delivery at scale*
We built community health, education,
and resilience

In IDA20, IDA supported over **122 million people** through social safety net programs, **56%** of which are **women**.



Fiji Jobs for Nature program supported over 5,000 people, especially women and youth – through short-term employment and skills trainings to deliver economic opportunities and address climate resilience.¹

POLICY COMMITMENT:

25 countries took action to address learning poverty.
14 of were among those with the lowest HCI.
(Target: 20, o/w 10 lowest HCI)



RESULTS: 4/5

POLICY: 8/8

¹ Source: [A triple win: Environmental protection, climate resilience and jobs for Fijians](#)



HUMAN CAPITAL

Hundreds of millions served; systems strengthened

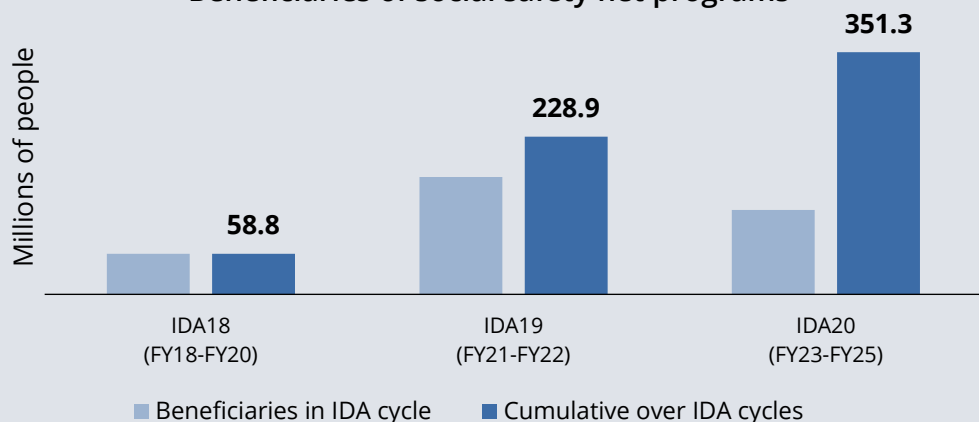
Essential immunization, nutrition, and health services reached hundreds of millions



In IDA20, over **224 million people** received essential health, nutrition, and population services. (Expected value: 285-430m)

More than 350 million people supported over the last three IDA cycles

Beneficiaries of social safety net programs



Systems are stronger ...



31 countries are better prepared for health emergencies (Target: 20).

... better prepared for crisis, better financed, and more inclusive



- Adaptive social protection & resilience in **30 countries** (Target: 20)
- Pandemic prevention & preparation in **20 countries** (Target: 20)



- Strengthened public finance for human capital in **26 countries** o/w 16 with the lowest HCI (Target: 20 o/w 8 with the lowest HCI)



- Expanding services for persons with disabilities in **44 countries** (Target: 18)



Crisis Preparedness



Governance and Institutions



Debt



Technology



Flexibility



Agility



Resilience



Partnership



IDA

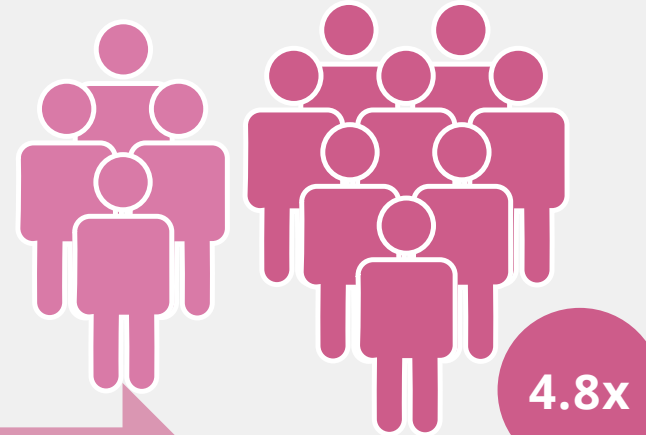
International Development Association
WORLD BANK GROUP



JET: *Laying the foundations for jobs*
We invested to spark private sector-led growth



In IDA20, 24.6 million people and businesses were reached with financial services (Target: 5-6.5m).

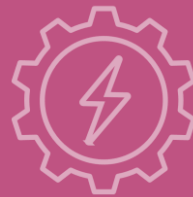


EXPECTED:
5 MILLION

RESULT: 24.6 MILLION



21 countries
(5 FCS) received support to remove constraints or address market failures in **sectors with high growth potential**.
(Target 20, o/w 5 FCS)



Across Guinea, Liberia, and Sierra Leone, IDA delivered electricity to approximately **2.8 million people**.¹ Under IDA20, **54.5 million people globally** benefitted from new or improved electricity services.



RESULTS: 5/6

POLICY: 7/8

¹ Data as of 2023

Source: [Powering Africa: The Transformational Impact of Regional Energy Projects in West Africa](#)



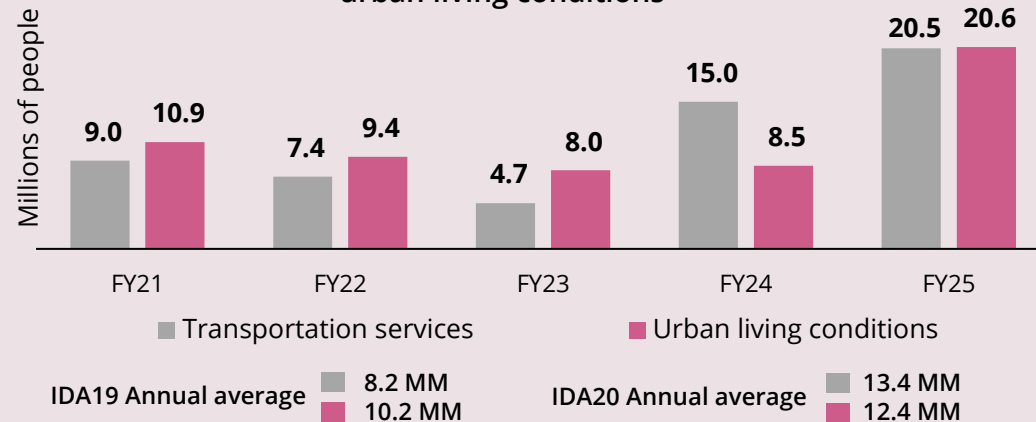
JET

Driving investment and promoting economic opportunities for millions



Delivery of key infrastructure is accelerating

People with enhanced access to transportation services and improved urban living conditions



www.parlament.gv.at

After COVID delays, access to transportation expanded



40.2 million people received enhanced access to transportation during IDA20 (Target: 90-105m).

Countries tackled governance barriers ...

IDA supported **20 countries, including 14 with low scores on transparency measures**, to identify constraints to quality infrastructure. (Target: 20 o/w 10 <+ 3.0 on CPIA transparency measures)

... and built financial resilience, improved data collection, and expanded broadband



- 22 countries (10 FCS) strengthened financial system resilience (Target: 15 o/w 10 FCS).



- 43 countries boosted institutional capacity for better data-informed policy (Target: 34).



- 27 countries (9 FCS, 6 Small States, 6 landlocked) expanded broadband access and use for jobs of the future. (Target: 17 o/w 9 FCS, 4 Small States, and 6 landlocked).

III-279 der Beilagen XXVIII. GP - Bericht der Beilagen IDA-20 Teil 3





FCV: Delivery in challenging contexts

We strengthened our engagement where extreme poverty is concentrated

All JET beneficiaries indicators reported an increase in the number of people reached in FCS countries, compared to IDA18 and IDA19.



BENEFICIARIES IN FCS COUNTRIES

INDICATOR (MILLIONS OF PEOPLE)	IDA18	IDA19	IDA20
Farmers adopting improved agricultural technology	0.23	0.32	2.50
People provided with new or improved electricity service	3.42	11.89	18.42
Beneficiaries reached with financial services supported by World Bank operations	0.19	0.83	4.63
Beneficiaries in IDA countries of job-focused interventions	3.09	6.75	15.22
People with enhanced access to transportation services	na*	3.06	8.89
People provided with improved urban living conditions	2.78	8.00	17.22

*Indicator newly introduced in IDA19



70% (12 of 17) of countries eligible for WHR implemented at least one reform to leverage outcomes for both refugees and host communities. (Target: 60%)

RESULTS: 1/1
POLICY: 3/4

¹ Source: [Yemen: Building and Preserving Human Capital During Prolonged Conflict](#)



Between 2021 and 2023, IDA supported the delivery of health & nutrition services to more than **11 million people** in Yemen (5.8 million women and girls).¹



Globally, ID20 delivered health, nutrition and population services to **138.5 million people**, a **73% increase** compared to IDA18.

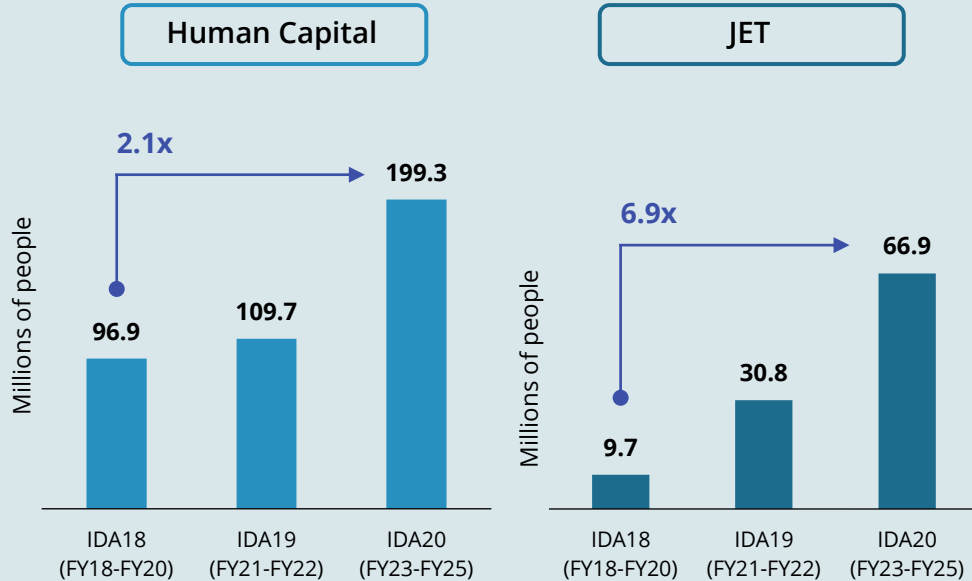


FCV

We helped address drivers of FCV and supported resilience

More people in FCS have access to key services

People in FCS countries benefited from services that promote human capital (HC) development and job and economic transformation (JET)



And IDA continues to work with partners...



94% of new country engagement products in FCS show how the WBG **works with partners** to address drivers of FCV and sources of resilience (Target: 100%).

...with attention to the private sector, governance, and regional challenges



▪ **100% (5/5)** of joint World Bank-IFC Country Private Sector Diagnostics in IDA FCS included an FCV lens (Target: 100%, 3/3).



▪ **43% of IDA countries in FCS** (with active portfolios) established and/or strengthened core government functions (Target: 40%).



▪ **4 regional initiatives** addressed transboundary drivers of, or resilience to, FCV, and/or strengthened crisis readiness (Target: 4 regions: Sahel, Lake Chad, the Horn of Africa, and Central Asia).





GENDER & DEVELOPMENT: *Empowerment*

We expanded and enabled economic opportunities

Job-focused interventions in IDA20 benefitted over **13 million women**.



36 million beneficiaries, **36%** of them women



24 countries expanded access to quality, affordable childcare (*Target: 15 countries*).



IDA expanded support for rural women. The **Nigeria for Women project** empowered **460 thousand women**, including through **22 thousand Women's Affinity Groups**, hubs for empowerment that offer grants, business mentorship, market connections, skills training, and innovative solutions tailored to women's needs.¹

Globally, the number of female farmers IDA20 benefitted increased more than 2.7 times compared to IDA19.





Gender

Addressing unique barriers for women and girls

IDA20 worked across sectors to support women's foundational well-being and opportunities ...



21.4 million women benefitted with financial services between IDA18 and IDA20 – nearly 50% of all beneficiaries.



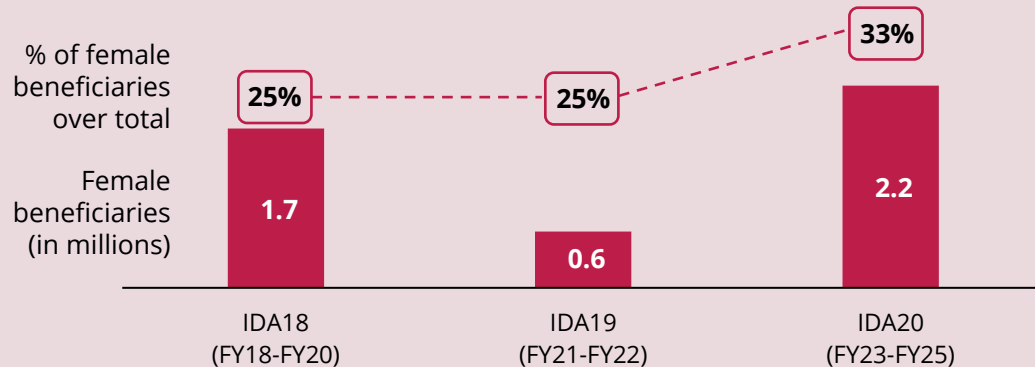
20 countries strengthened policy frameworks for preventing and responding to gender-based violence (Target: 10 countries).



80% of IDA20 infrastructure operations supported employment opportunities for women (Target: 50%).

... increased the share of female farmers supported to 33% ...

Female farmers adopting improved agricultural technology



... expanded technology access and supported policies that advance equal opportunity



IDA20 supported **48 new operations** that will increase women's access to and usage of digital technology in the technology, financial, and agricultural sectors (Target: 30 Operations).



10 countries made fiscal policy and budget systems more inclusive and gender responsive (Target: 10 countries).





CLIMATE CHANGE: *Supporting a livable planet*

We helped people and communities build resilience

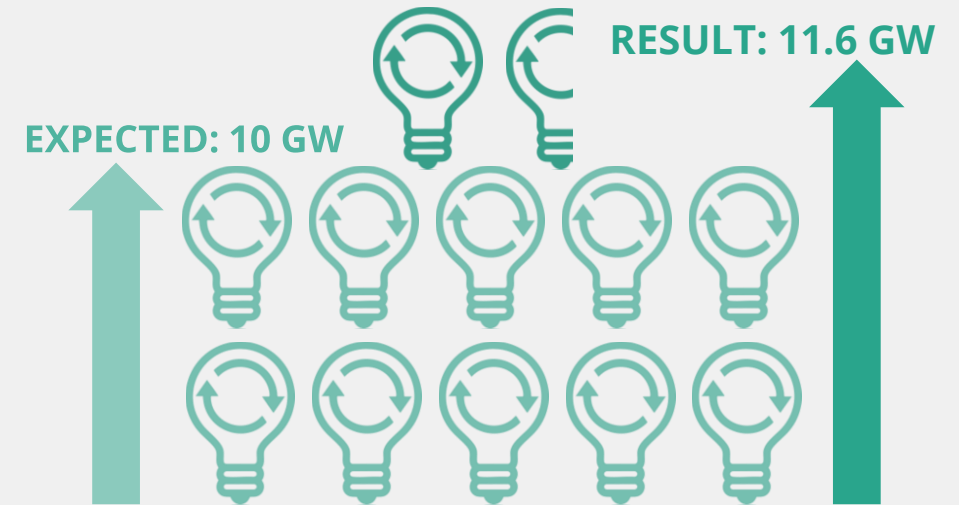


IDA20 helped **65 countries** develop climate policies and investments, including 28 countries in the **East Asia and Pacific Islands, South Asia, Africa, and the Caribbean**, that are advancing Locally Led Climate Action (LLCA) activities expected to benefit over 100 million people by 2030.¹

RESULTS: 3/4

POLICY: 6/8

IDA20 is contributing to **11.6 gigawatts** in generation capacity of renewable energy



41 countries (14 FCS) improved their crisis preparedness capacity to respond to **natural hazards and food crises** (Target 25 countries (10 FCS))

¹ Source: [Scaling Up Locally Led Climate Action to Enable Community Resilience and Equitable Climate Transitions](#)



IDA

International Development
Association
WORLD BANK GROUP

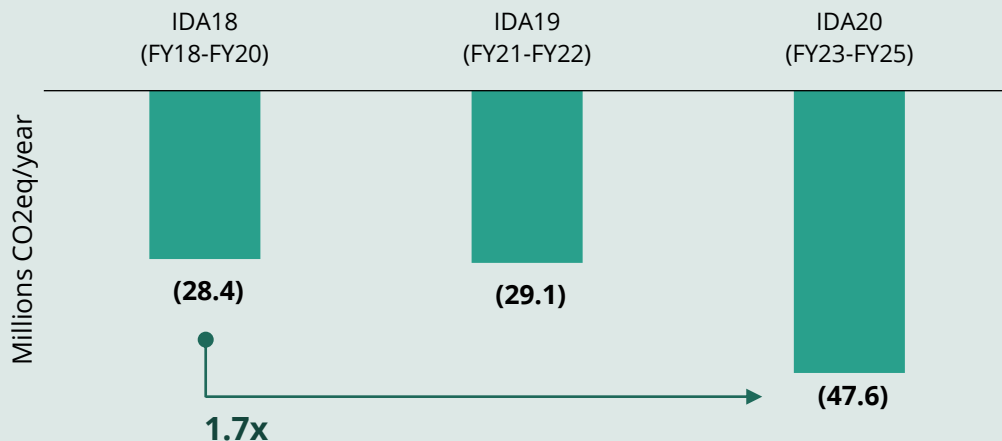


CLIMATE CHANGE

Advancing national priorities while mitigating climate and environmental challenges

IDA contributes to the reduction of GHG emissions

Expected Net Greenhouse Gas Emissions



www.parlament.gv.at



... while supporting climate-smart approaches



Overall climate co-benefits reached 41%, well above targets of 35% (short of targets for PSW - 30% for IFC PSW and 29% for MIGA PSW). **All new IDA and PSW-MIGA, and 99% of PSW-IFC operations** were Paris aligned¹.



Though short of its ambition to reach 20 million, IDA20 **enabled 7.6 million people** to gain access to clean cooking

II-279 der Beilagen XXVIII. GP - Bericht - Beilage IDA-20 Teil 3

IDA20 helped advance national goals ...



46 countries prepared Country Climate Development Reports (*Target 30*) and **50 countries** developed Nationally Determined Contributions or Long-Term Strategies (*Target 50*)

... and improving regulations to scale up green finance



36 countries (11 FCS) revised financial regulations to better manage risks and help mobilize private capital for low-carbon investments

1. The IDA20 Paris Alignment target for IFC and MIGA was 85% of new financial flows starting July 1, 2023, and 100% starting July 1, 2025.

IDA20 Cross-cutting Issues: Flexible and agile response, support resilience and foundational development priorities in client countries



DEBT

1/1 PCs met/exceeded

1/1 Results met/exceeded

45 countries
published timely debt
reports, surpassing the
expected value by 50%

Between 2020 and 2024,
Ethiopia gained 7 million new
unique mobile subscribers,
increasing mobile penetration
from 26% to 33% of the
population.



TECHNOLOGY

5/6 PCs met/exceeded

1/1 Results met/exceeded

138 million people
with enhanced broadband
access, over 70% more than the
expected value

44 countries
Expanded access to core
services for persons with
disabilities



IDA20 Cross-cutting Issues: Flexible and agile response, support resilience and foundational development priorities in client countries



GOVERNANCE & INSTITUTIONS

9/9 PCs met/exceeded

1/1 Results met/exceeded

59 countries

with statistical capacity building support for household surveys, exceeding the expected value of 55 countries

67 countries

supported in bolstering domestic resource mobilization capacity through fair and progressive revenue policies



In West Africa, crisis preparedness operations rapidly adapted to shifting needs. The West Africa Food System Resilience Program (FSRP) strengthened hydrometeorological and early warning capacity in Burkina Faso, Mali, and neighboring countries, demonstrating how preparedness investments can stabilize systems even under stress.



CRISIS PREPAREDNESS

6/6 PCs met/exceeded

1/1 Results met/exceeded

60 countries

make disaster risk management a national priority, exceeding the expected value of 55 countries

41 countries (14 FCS)

facing natural hazards and food crises improved crisis preparedness and response capacity by strengthening institutional and planning frameworks and/or physical infrastructure.



IDA

International Development
Association
WORLD BANK GROUP